

MONTHLY SURVEY ON EXPECTATIONS May 2026

Sent on: 5 May 2026

Deadline for responses: 11 May 2026

Variable	Median	Decile 1	Decile 9	Answers	Graph
01. Inflation (% change)					
Current month (monthly change)	0,40	0,30	0,60	53	Graph1
Next month (monthly change)	0,00	-0,20	0,40	53	Graph2
In eleven months (12-month change)	3,30	2,50	4,20	53	Graph3
In twenty three months (12-month change)	3,00	3,00	3,30	53	Graph4
In thirty five months (12-month change)	3,00	3,00	3,10	52	Graph5
December 2026 (12-month change)	4,30	3,90	4,80	54	Graph6
December 2027 (12-month change)	3,10	3,00	3,50	54	Graph7
02. Inflation without volatiles (% change) (**)					
Current month (monthly change)	0,30	0,20	0,50	40	Graph8
Next month (monthly change)	0,10	-0,20	0,40	39	Graph9
In eleven months (12-month change)	3,20	2,90	4,00	41	Graph10
In twenty three months (12-month change)	3,00	3,00	3,20	41	Graph11
In thirty five months (12-month change)	3,00	2,90	3,20	40	Graph12
December 2026 (12-month change)	3,60	3,10	4,20	41	Graph13
December 2027 (12-month change)	3,00	3,00	3,50	41	Graph14
03. Monetary Policy rate target (%) (*)					
Following meeting	4,50	4,50	4,50	53	Graph15
Second following meeting	4,50	4,50	4,75	53	Graph16
In five months	4,50	4,50	4,75	53	Graph17
December 2026	4,50	4,25	4,75	54	Graph18
In eleven months	4,50	4,25	4,75	53	Graph19
In seventeen months	4,25	4,00	4,50	54	Graph20
In twenty three months	4,25	4,00	4,50	53	Graph21
In thirty five months	4,25	4,00	4,50	53	Graph22
04. Exchange Rate (CH \$ per US\$ 1) (*)					
In two months	890,00	870,00	900,00	53	Graph23
In eleven months	870,00	850,00	900,00	53	Graph24
In twenty three months forward	860,00	830,00	900,00	52	Graph25
05. IMACEC (Monthly Activity Index)					
One month ago	0,10	-0,50	1,50	48	Graph26
06. IMACEC No Mining (monthly activity index)					
One month ago	1,00	0,00	2,20	41	Graph27
07. GDP (12-month change)					
Within calendar quarter of the survey	1,40	0,10	2,20	48	Graph28
Year 2026	2,00	1,50	2,20	52	Graph29
Year 2027	2,50	2,20	3,00	52	Graph30
Year 2028	2,50	2,10	3,20	51	Graph31
08. GDP No Mining (12-month change)					
Within calendar quarter of the survey	1,80	0,50	2,40	41	Graph32
Year 2026	2,10	1,70	2,30	41	Graph33
Year 2027	2,60	2,20	3,00	41	Graph34
Year 2028	2,60	2,00	3,20	41	Graph35
09. HFC including NPO (12-month change)					
Year 2026	2,20	1,80	2,60	43	Graph36
Year 2027	2,50	2,00	3,50	43	Graph37
10. GFCF (12-month change)					
Year 2026	4,20	2,20	5,50	43	Graph38
Year 2027	4,00	3,00	5,60	43	Graph39
11. Structural Parameters - long-term average					
Inflation (12-month change)	3,00	3,00	3,10	42	Graph40
Monetary Policy rate target	4,25	4,00	4,75	42	Graph41
Exchange Rate (12-month change)	1,00	-2,00	3,00	35	Graph42
GDP (12-month change)	2,50	2,00	3,50	40	Graph43

(*) End of the month.

Monthly survey of selected academics, consultants, and executives or advisors of financial institutions and corporations. It is completed the day after the publication of the CPI and it is published the day after its reception, at 8:30 hrs. approximately (www.bcentral.cl, Statistics section, Economic Surveys, Website: <https://www.bcentral.cl/en/areas/economic-surveys>)

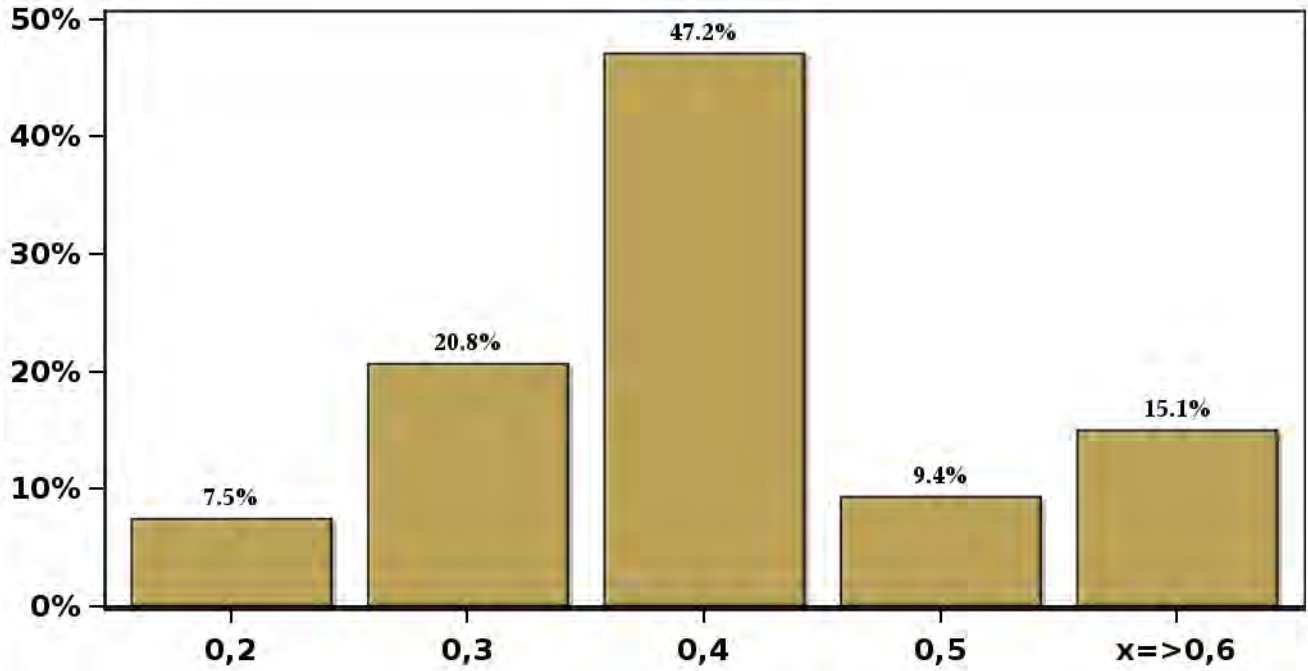
The survey period comprises the week prior to publication

Monthly Survey On Expectations May 2026

Inflation current month (monthly change)

Answers: 53 Median: 0,4%

% Obs.



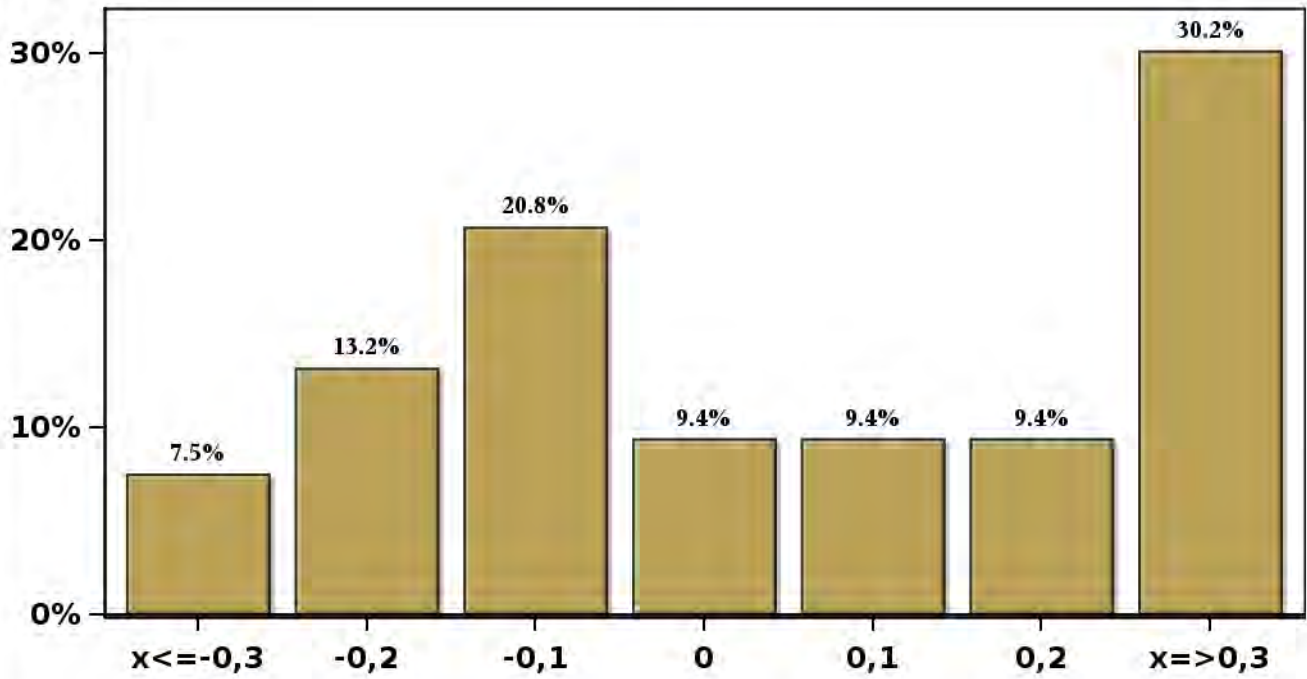
[Click to view summary table](#)

Monthly Survey On Expectations May 2026

Inflation next month (monthly change)

Answers: 53 Median: 0%

% Obs.

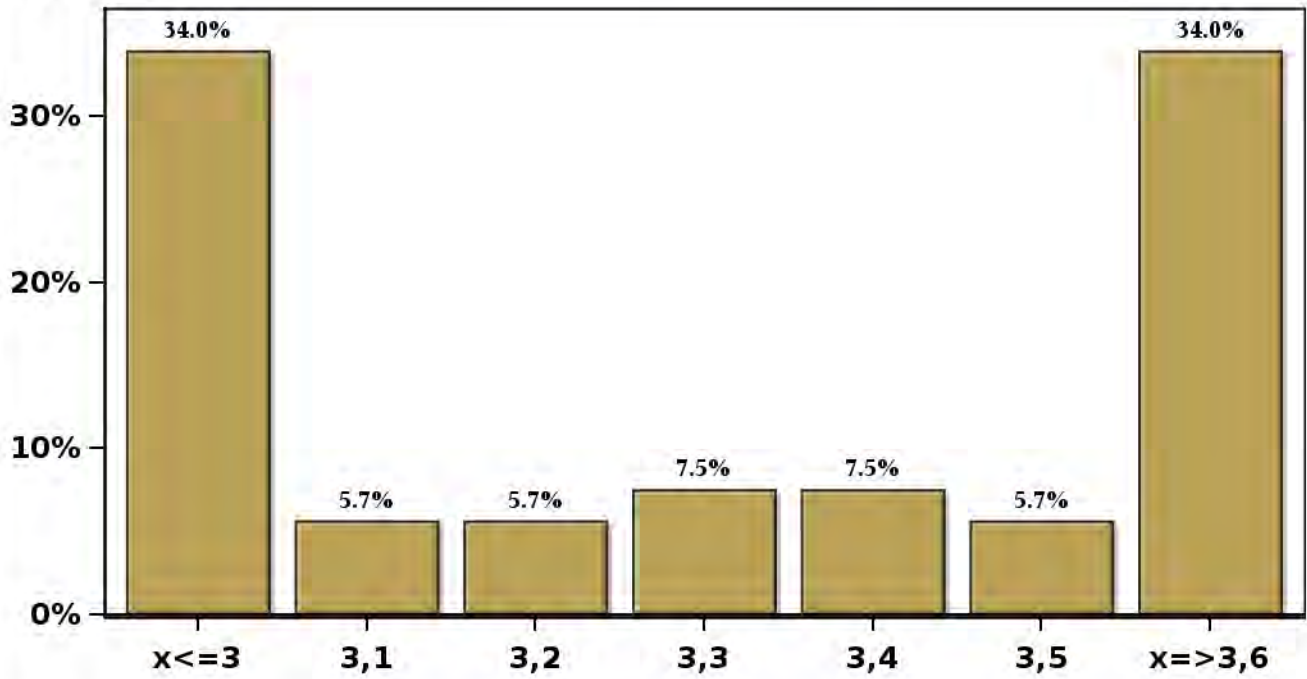


[Click to view summary table](#)

Monthly Survey On Expectations May 2026
Inflation in eleven months (12-month change)

Answers: 53 Median: 3,3%

% Obs.

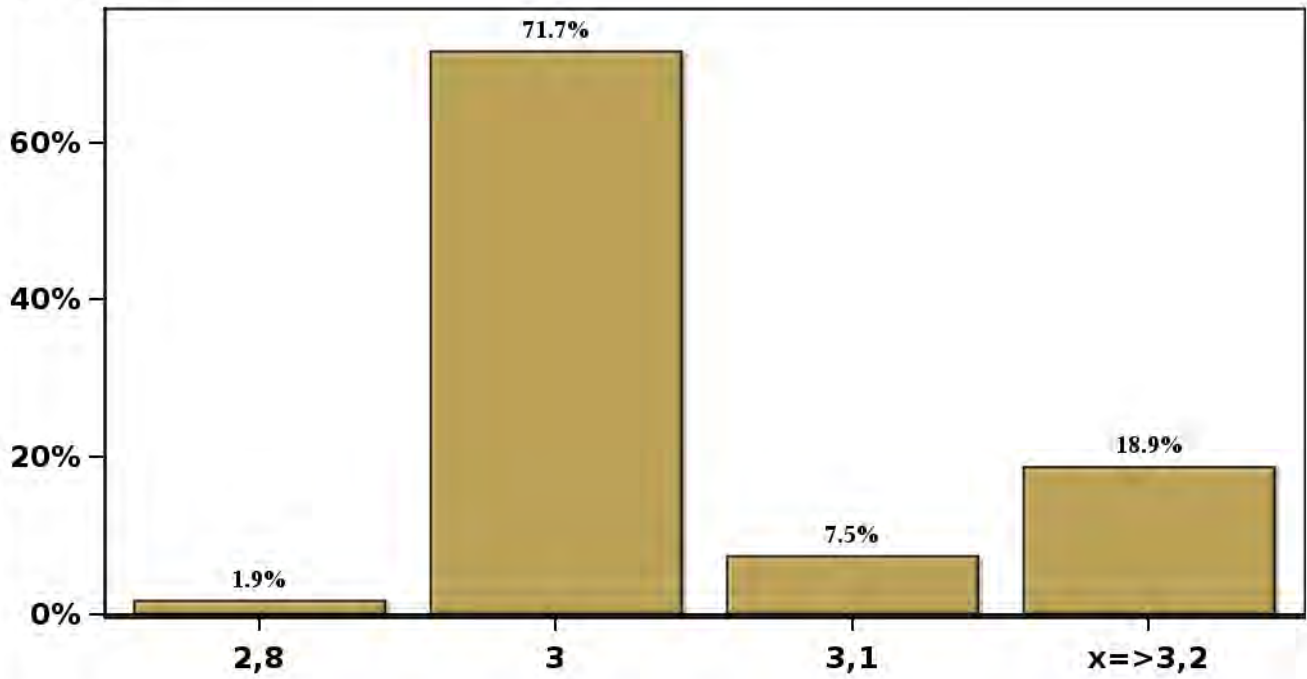


[Click to view summary table](#)

Monthly Survey On Expectations May 2026
Inflation in twenty three months (12-month change)

Answers: 53 Median: 3%

% Obs.

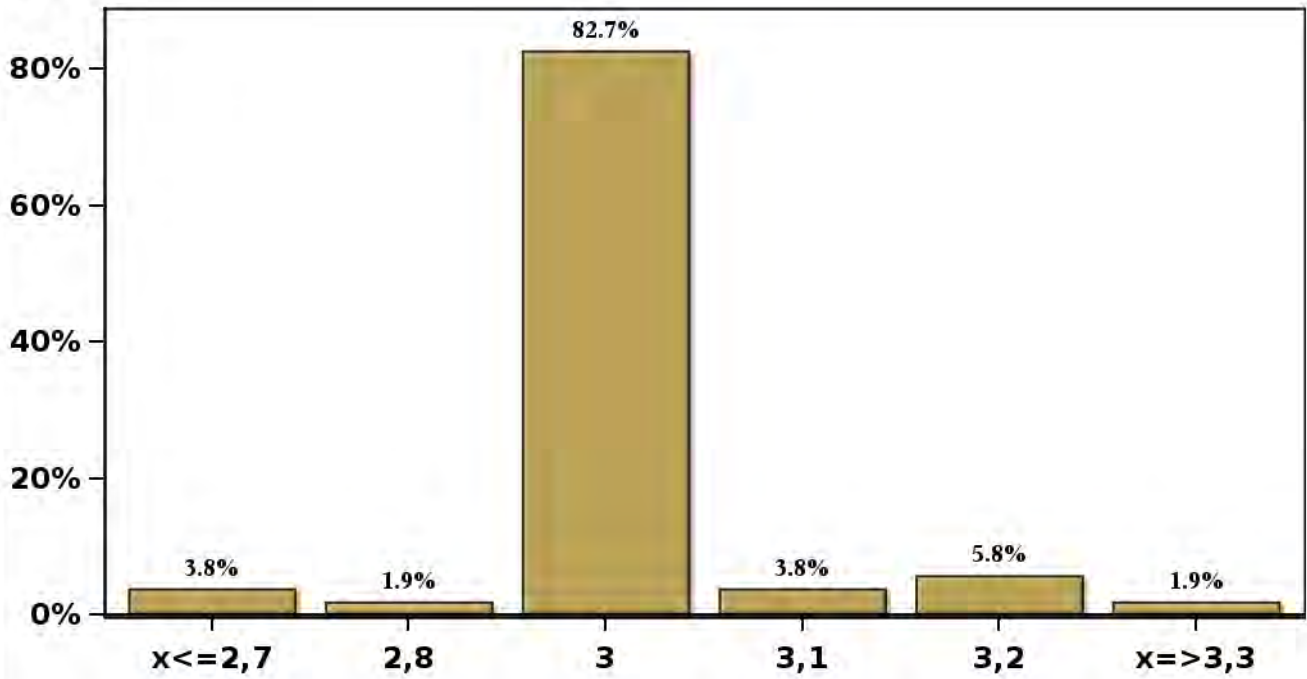


[Click to view summary table](#)

Monthly Survey On Expectations May 2026
Inflation in thirty five months (12-month change)

Answers: 52 Median: 3%

% Obs.

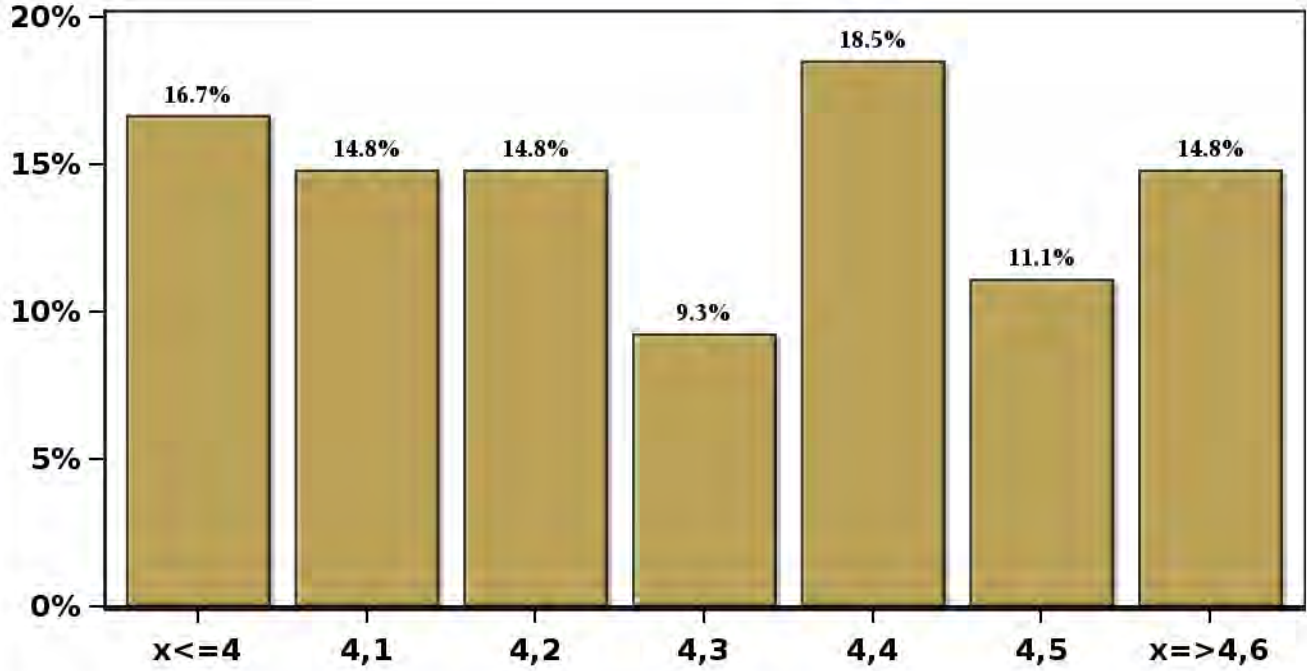


[Click to view summary table](#)

**Monthly Survey On Expectations May 2026
Inflation december 2026 (12-month change)**

Answers: 54 Median: 4,3%

% Obs.

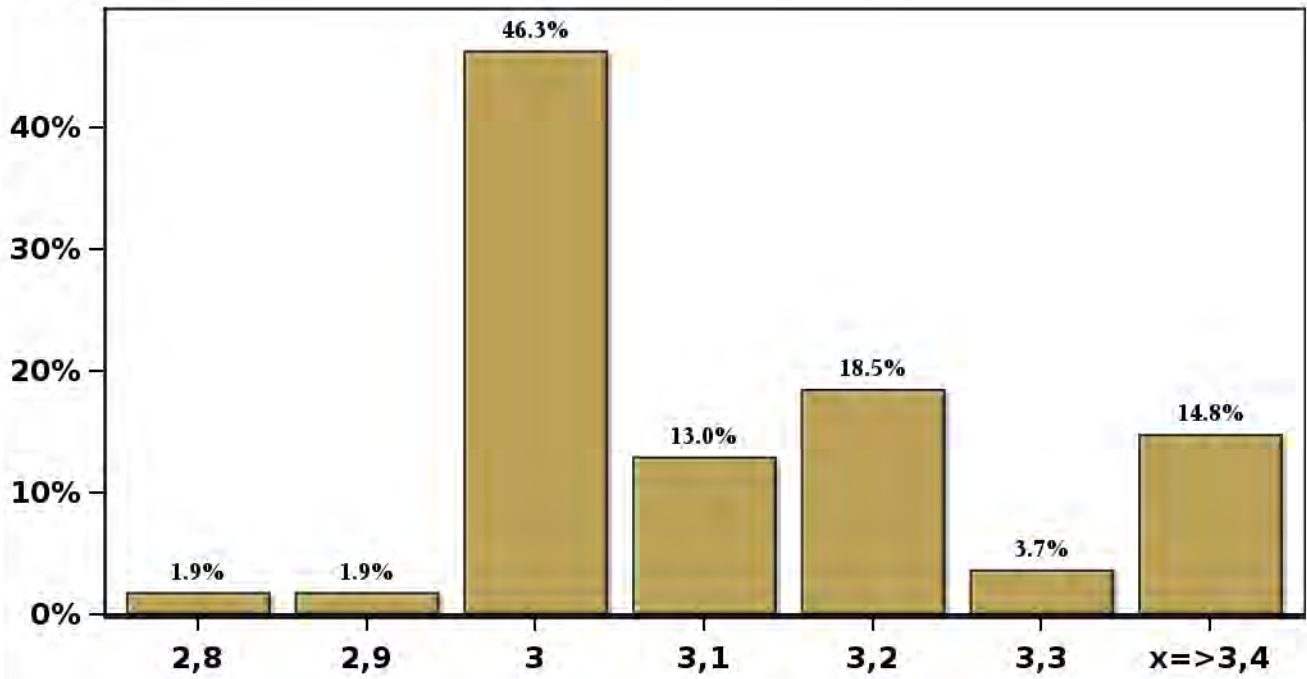


[Click to view summary table](#)

**Monthly Survey On Expectations May 2026
Inflation december 2027 (12-month change)**

Answers: 54 Median: 3,1%

% Obs.

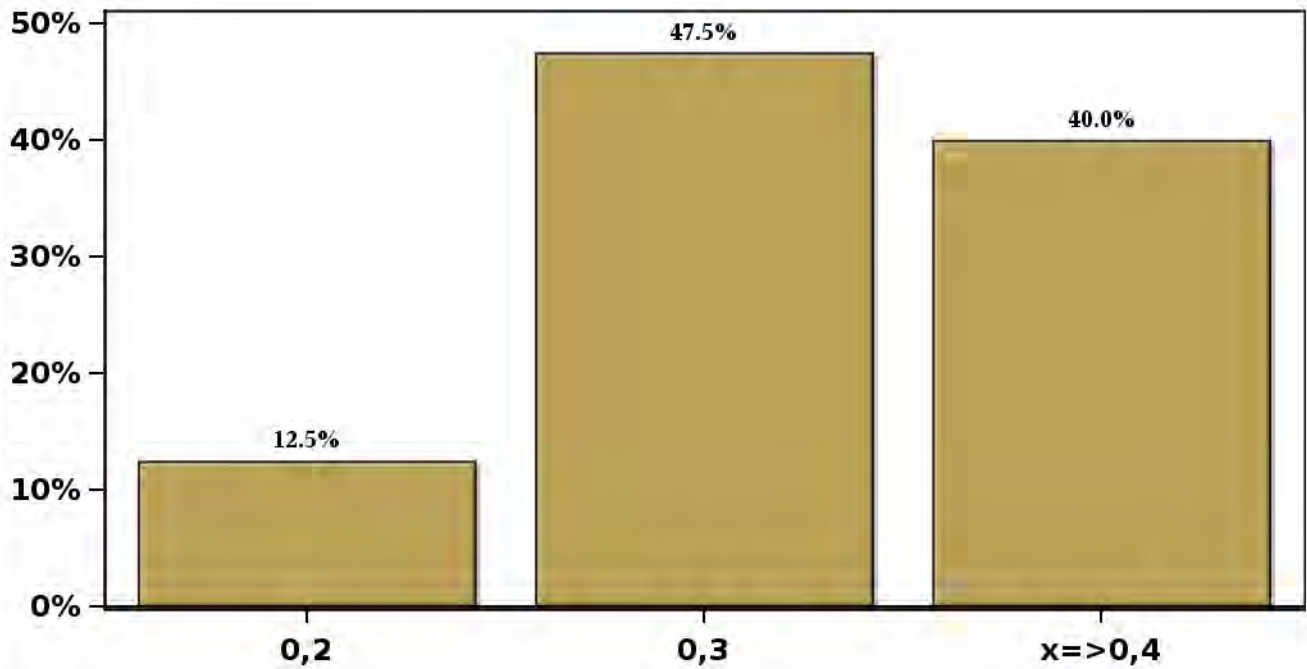


[Click to view summary table](#)

Monthly Survey On Expectations May 2026
Inflation without volatiles current month (monthly change)

Answers: 40 Median: 0,3%

% Obs.

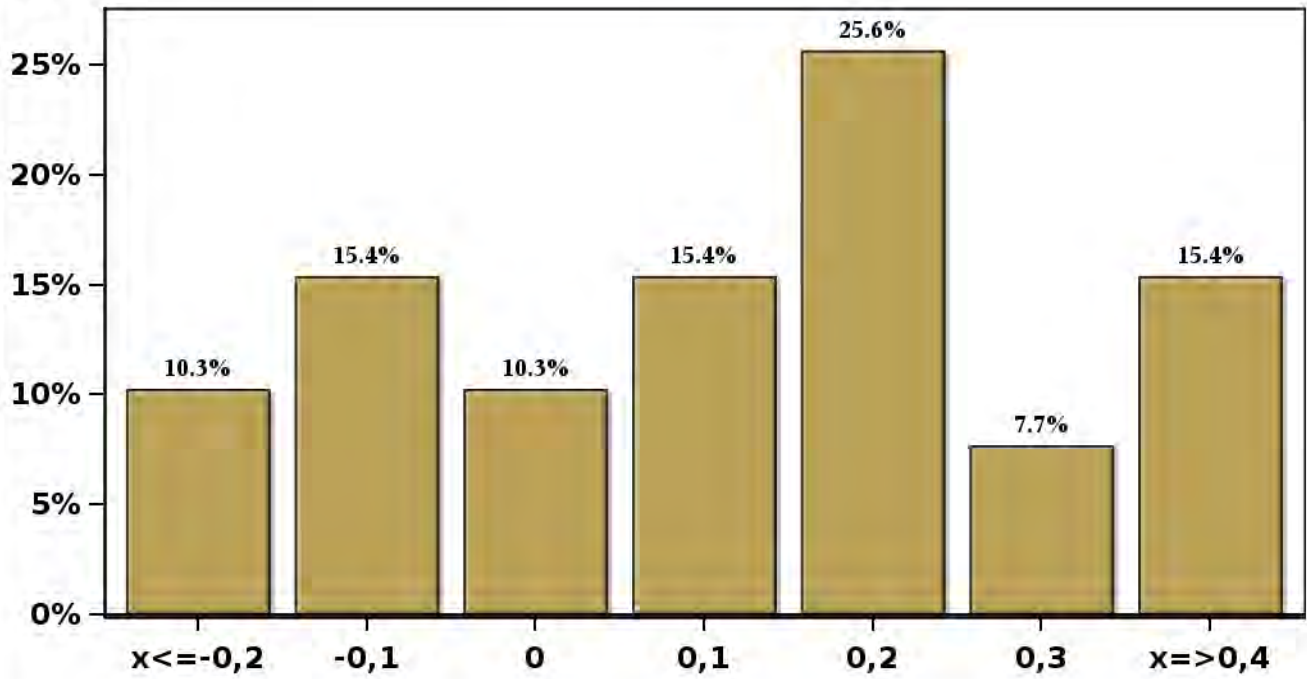


[Click to view summary table](#)

Monthly Survey On Expectations May 2026
Inflation without volatiles next month (monthly change)

Answers: 39 Median: 0,1%

% Obs.

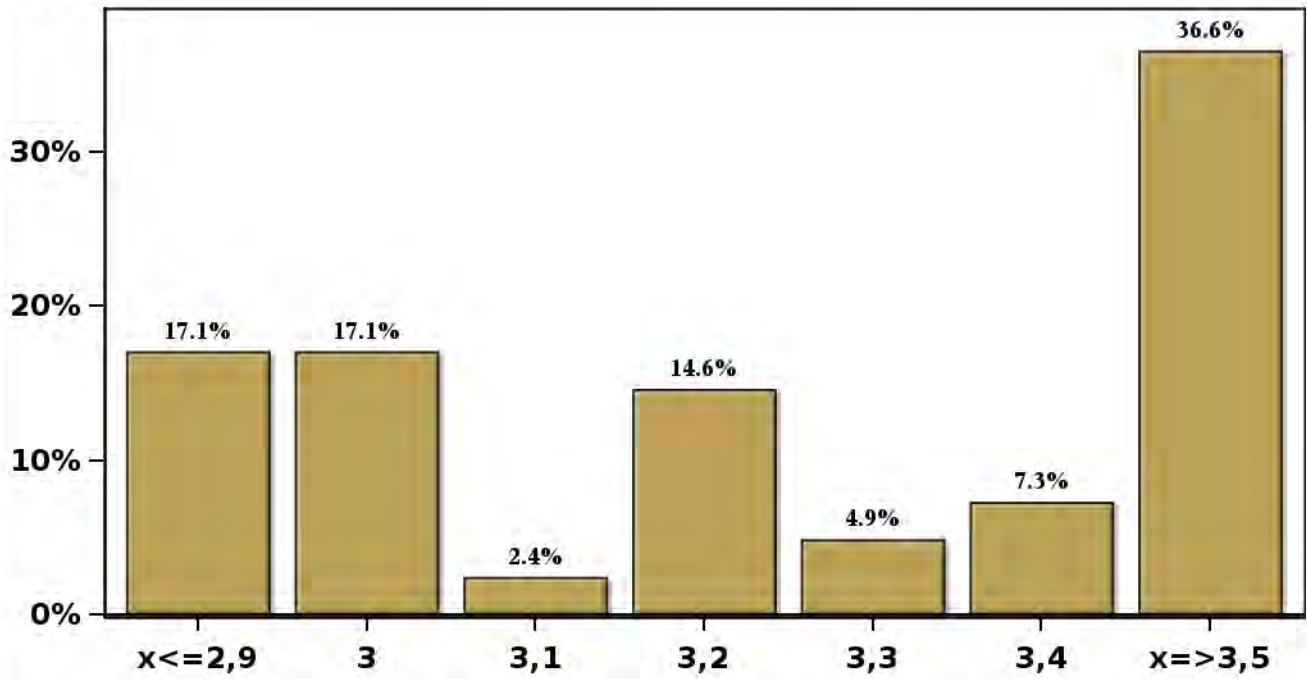


[Click to view summary table](#)

Monthly Survey On Expectations May 2026
Inflation without volatiles in eleven months (12-month change)

Answers: 41 Median: 3,2%

% Obs.

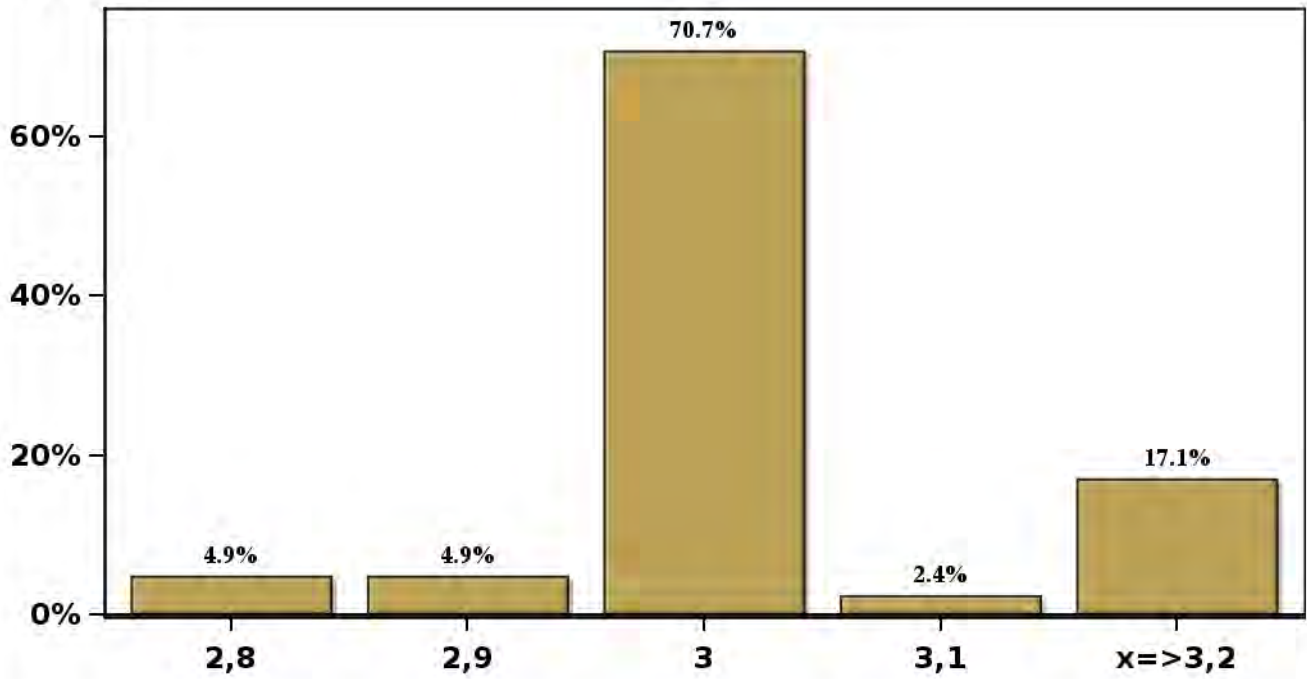


[Click to view summary table](#)

Monthly Survey On Expectations May 2026
Inflation without volatiles in twenty three months (12-month change)

Answers: 41 Median: 3%

% Obs.

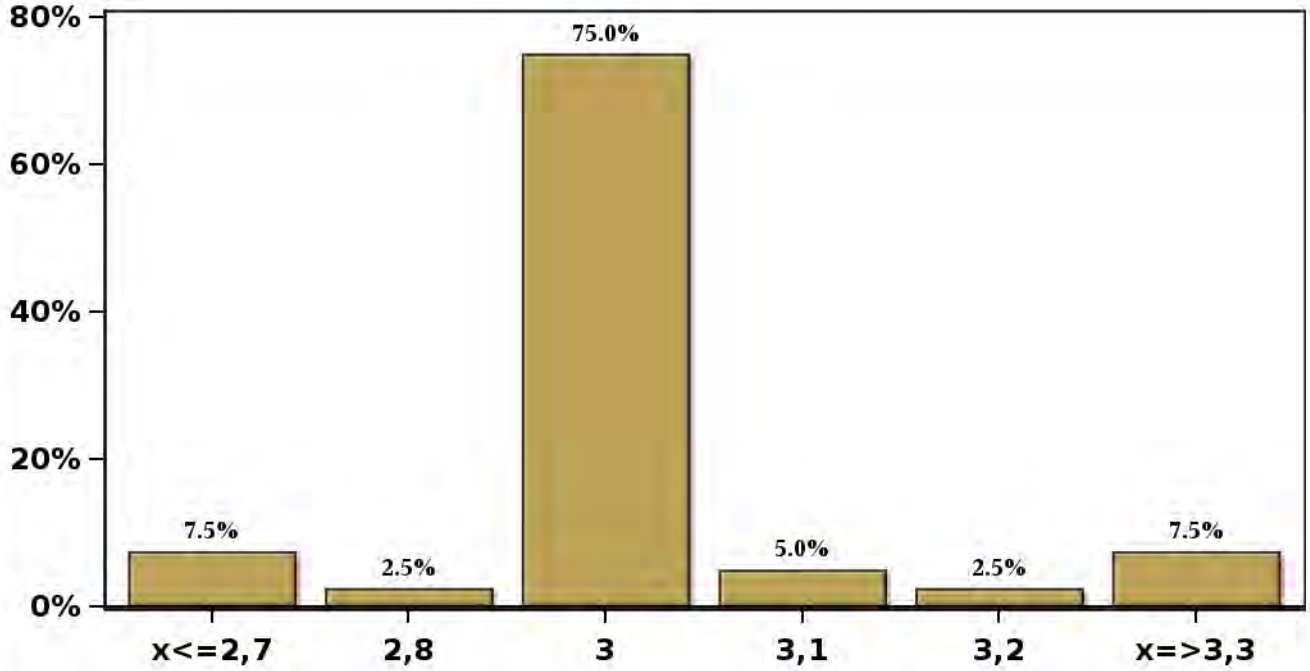


[Click to view summary table](#)

Monthly Survey On Expectations May 2026
Inflation without volatiles in thirty five months (12-month change)

Answers: 40 Median: 3%

% Obs.

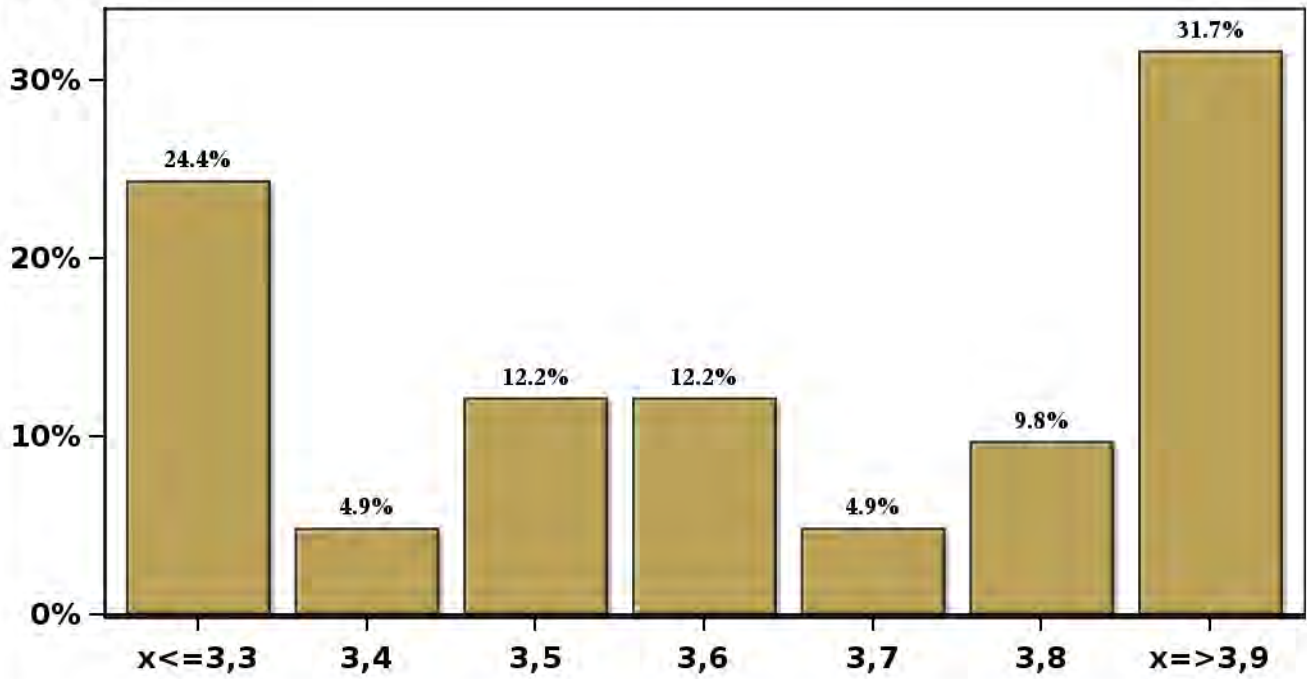


[Click to view summary table](#)

Monthly Survey On Expectations May 2026
Inflation without volatiles december 2026 (12-month change)

Answers: 41 Median: 3,6%

% Obs.

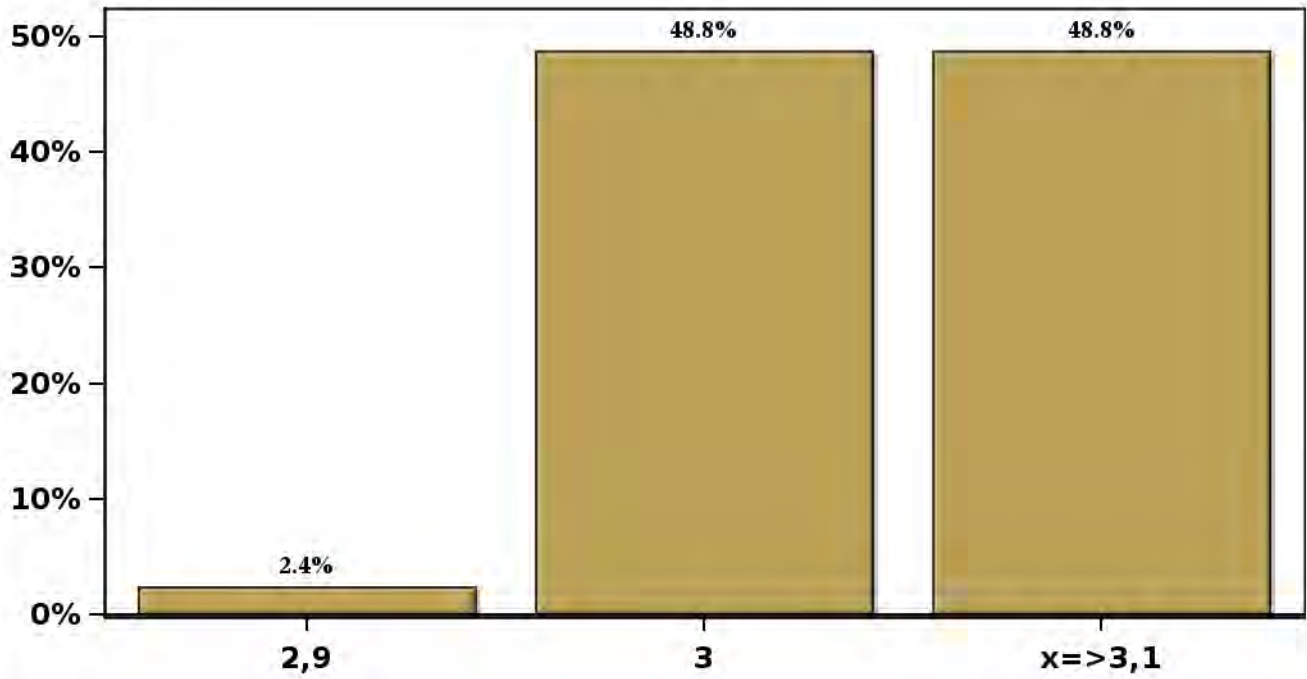


[Click to view summary table](#)

Monthly Survey On Expectations May 2026
Inflation without volatiles december 2027 (12-month change)

Answers: 41 Median: 3%

% Obs.

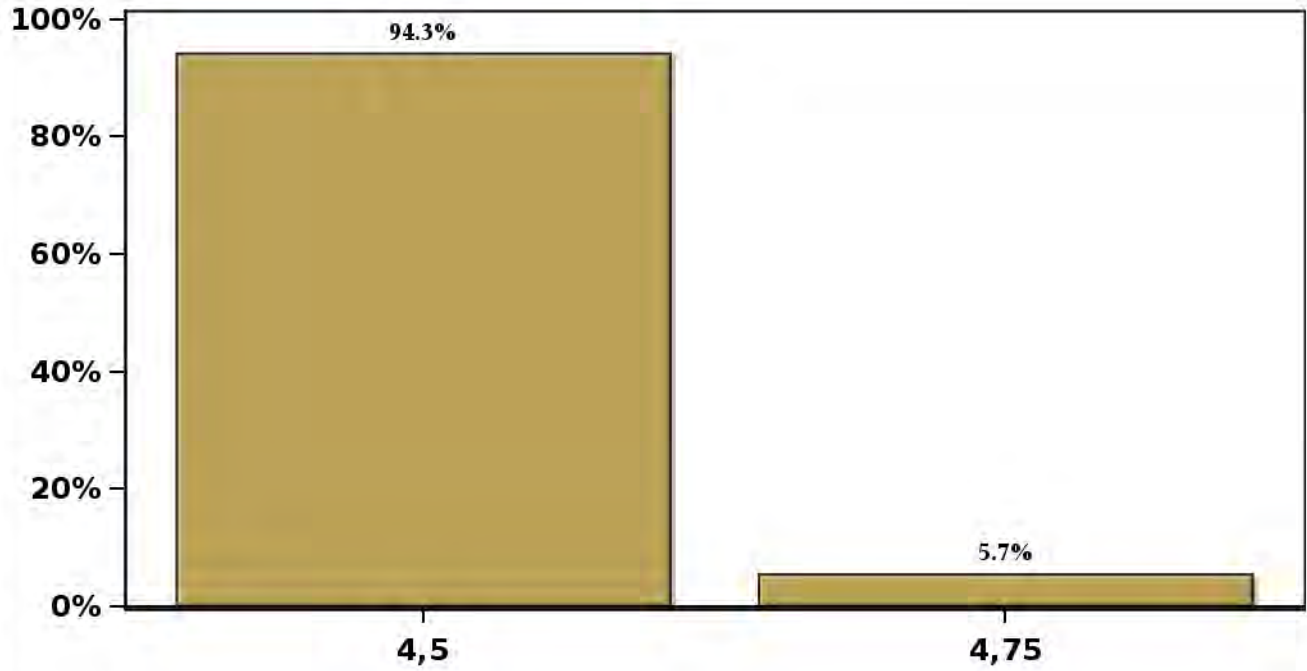


[Click to view summary table](#)

**Monthly Survey On Expectations May 2026
Monetary Policy rate target following meeting**

Answers: 53 Median: 4,5%

% Obs.

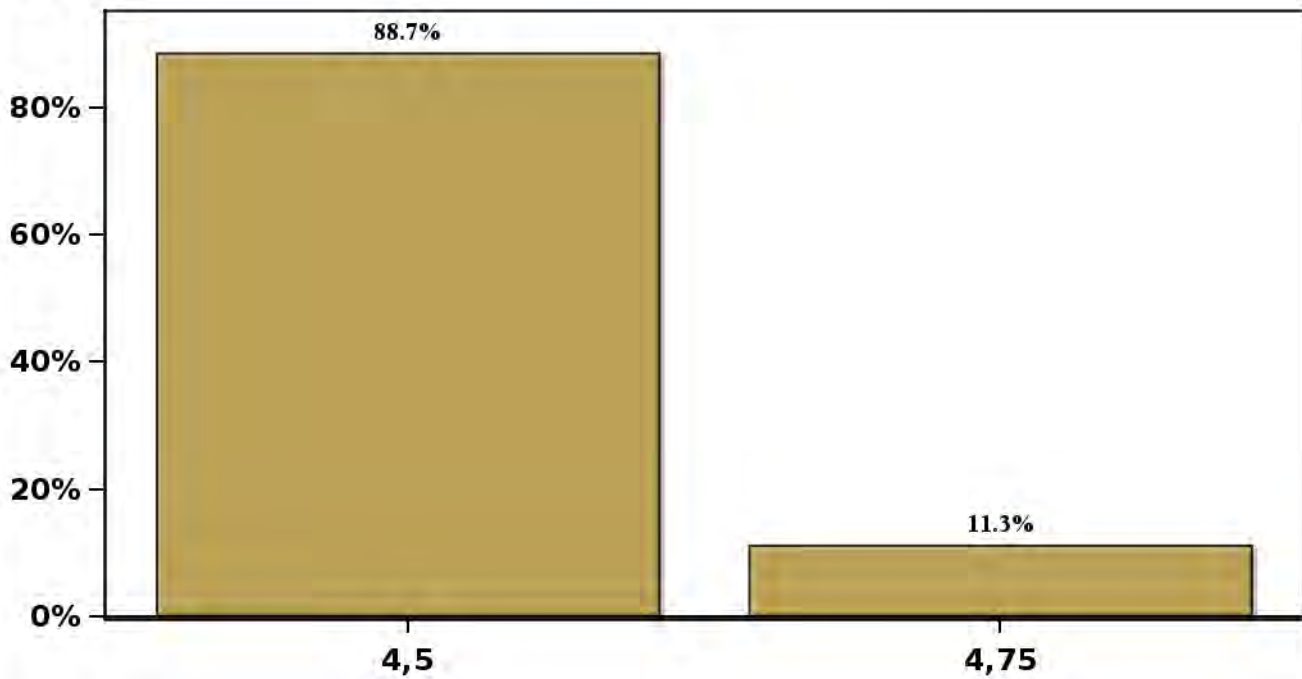


[Click to view summary table](#)

Monthly Survey On Expectations May 2026
Monetary Policy rate target second following meeting

Answers: 53 Median: 4,5%

% Obs.



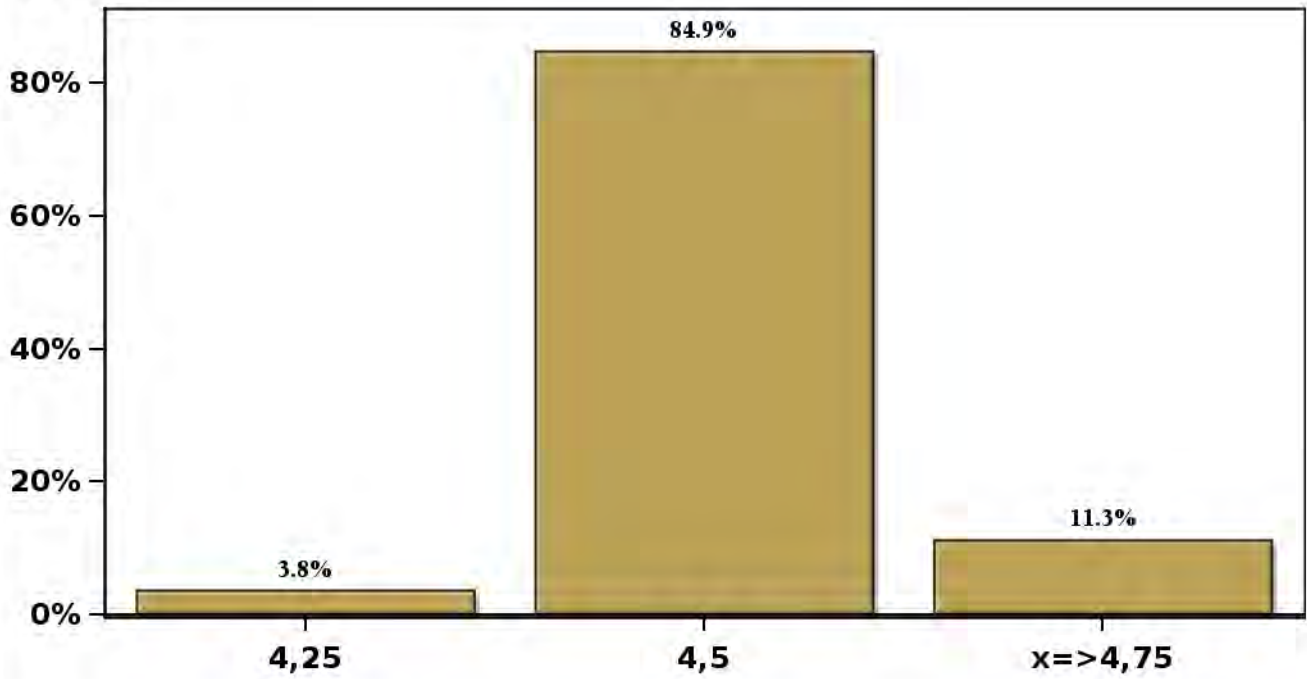
[Click to view summary table](#)

Monthly Survey On Expectations May 2026

Monetary Policy rate target In five months

Answers: 53 Median: 4,5%

% Obs.



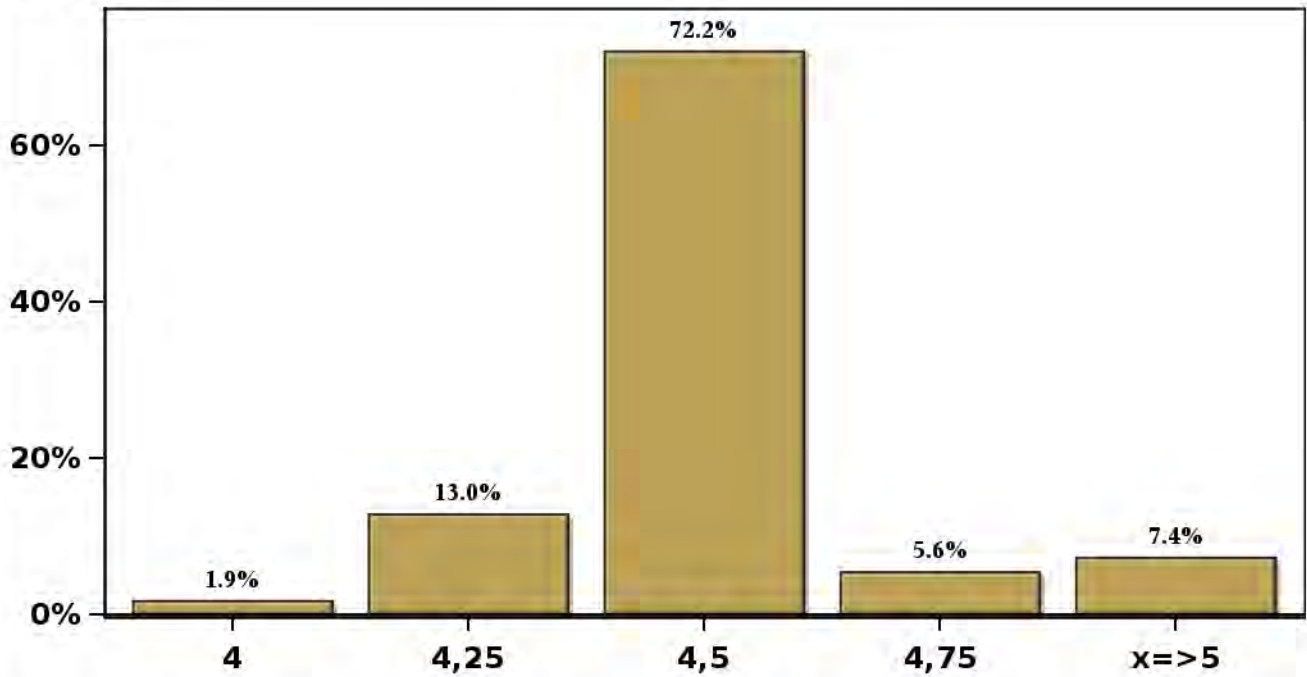
[Click to view summary table](#)

Monthly Survey On Expectations May 2026

Monetary Policy rate target december 2026

Answers: 54 Median: 4,5%

% Obs.

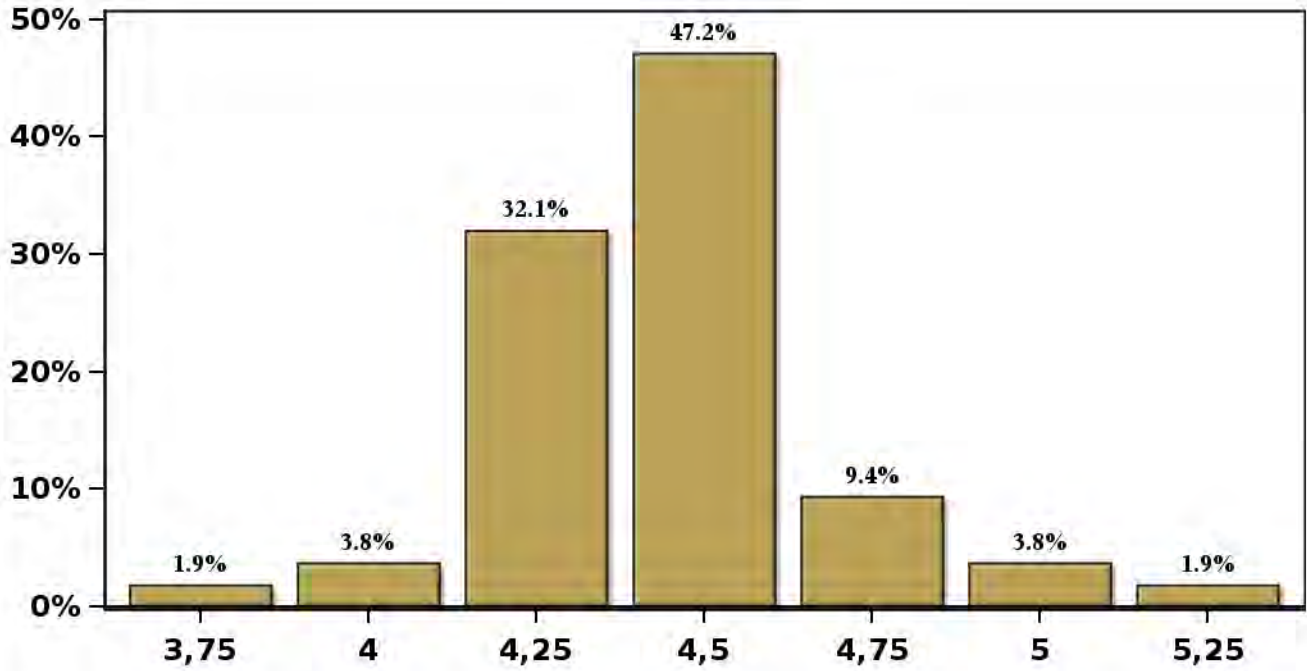


[Click to view summary table](#)

Monthly Survey On Expectations May 2026
Monetary Policy rate target in eleven months

Answers: 53 Median: 4,5%

% Obs.

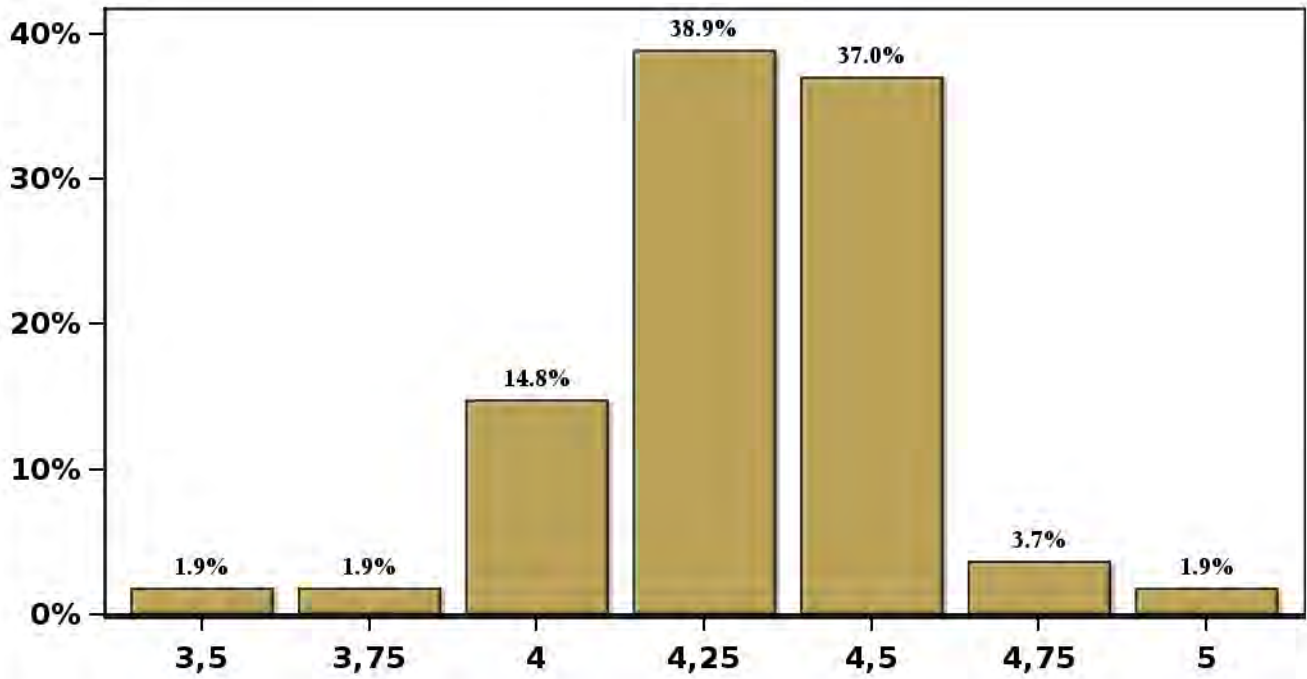


[Click to view summary table](#)

Monthly Survey On Expectations May 2026
Monetary Policy rate target in seventeen months

Answers: 54 Median: 4,25%

% Obs.

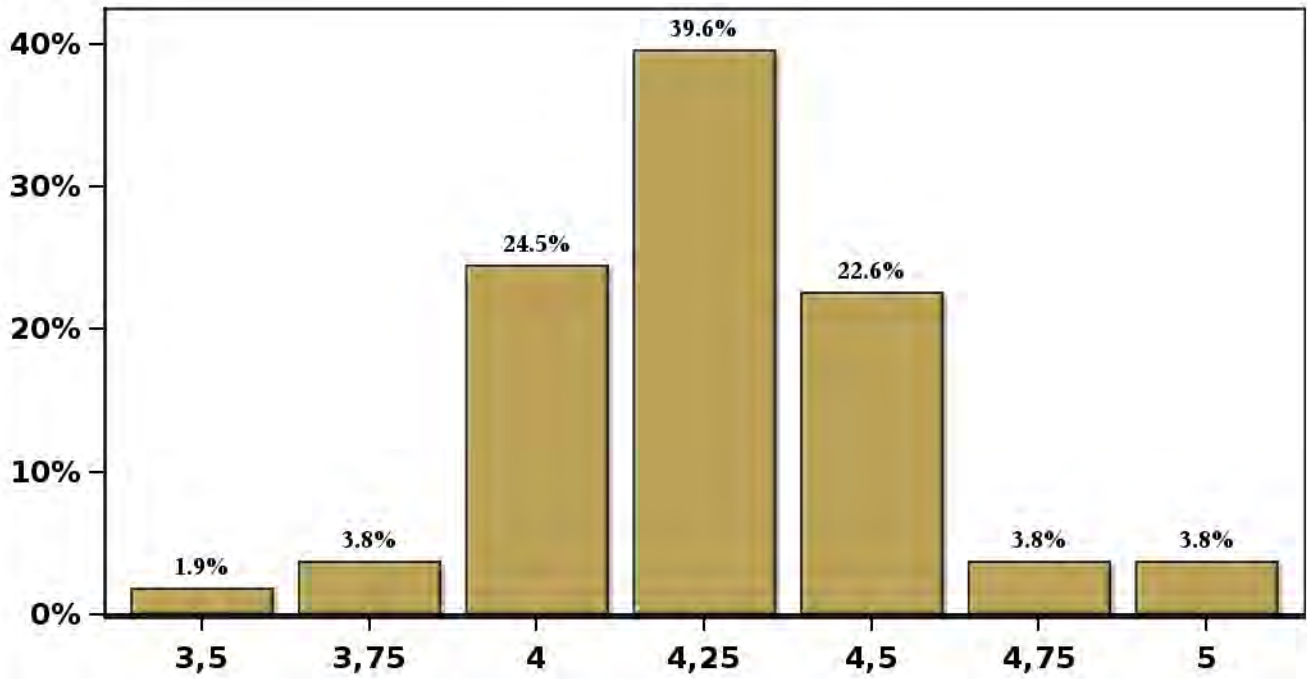


[Click to view summary table](#)

Monthly Survey On Expectations May 2026
Monetary Policy rate target in twenty three months

Answers: 53 Median: 4,25%

% Obs.

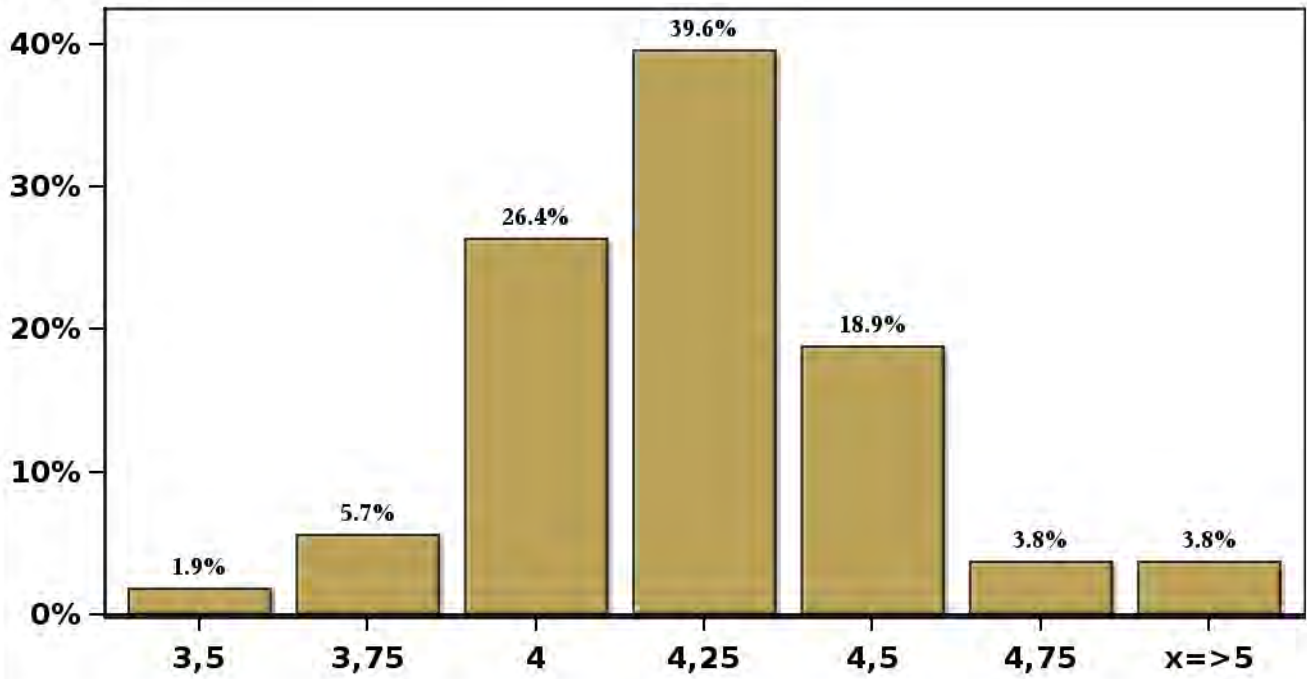


[Click to view summary table](#)

Monthly Survey On Expectations May 2026
Monetary Policy rate target in thirty five months

Answers: 53 Median: 4,25%

% Obs.

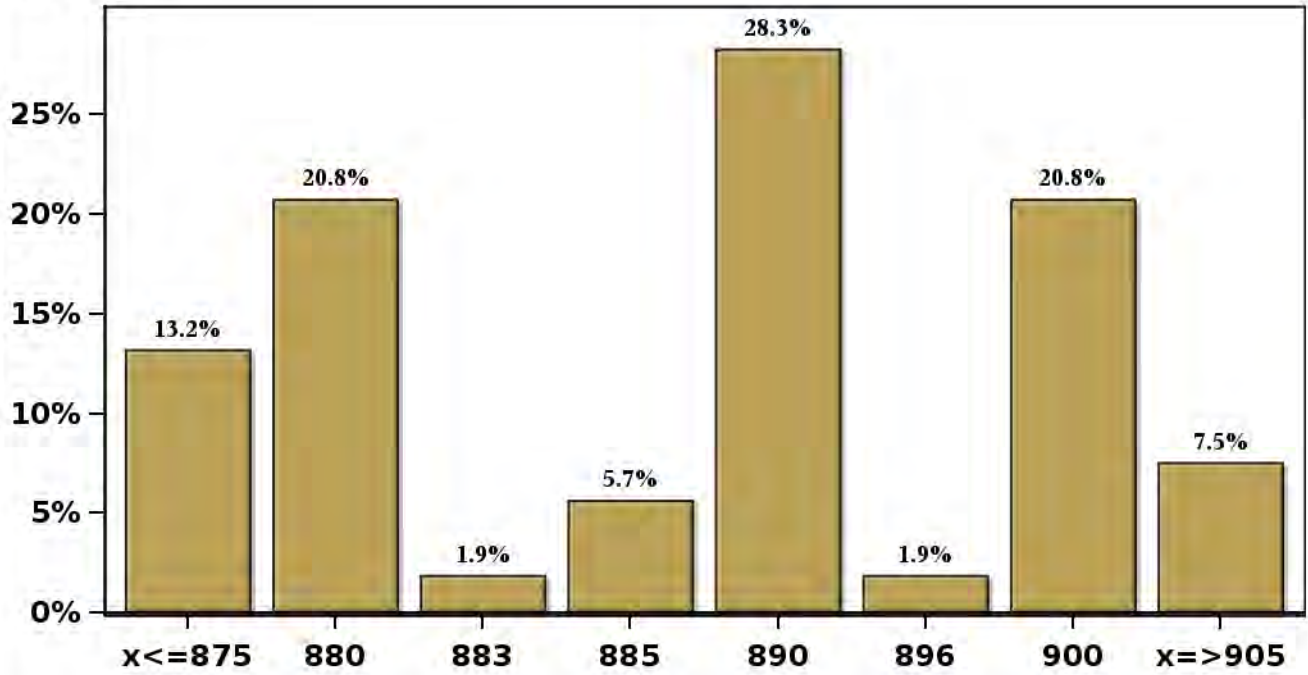


[Click to view summary table](#)

Monthly Survey On Expectations May 2026
Exchange Rate in two months (CH \$ per US\$)

Answers: 53 Median: \$890

% Obs.

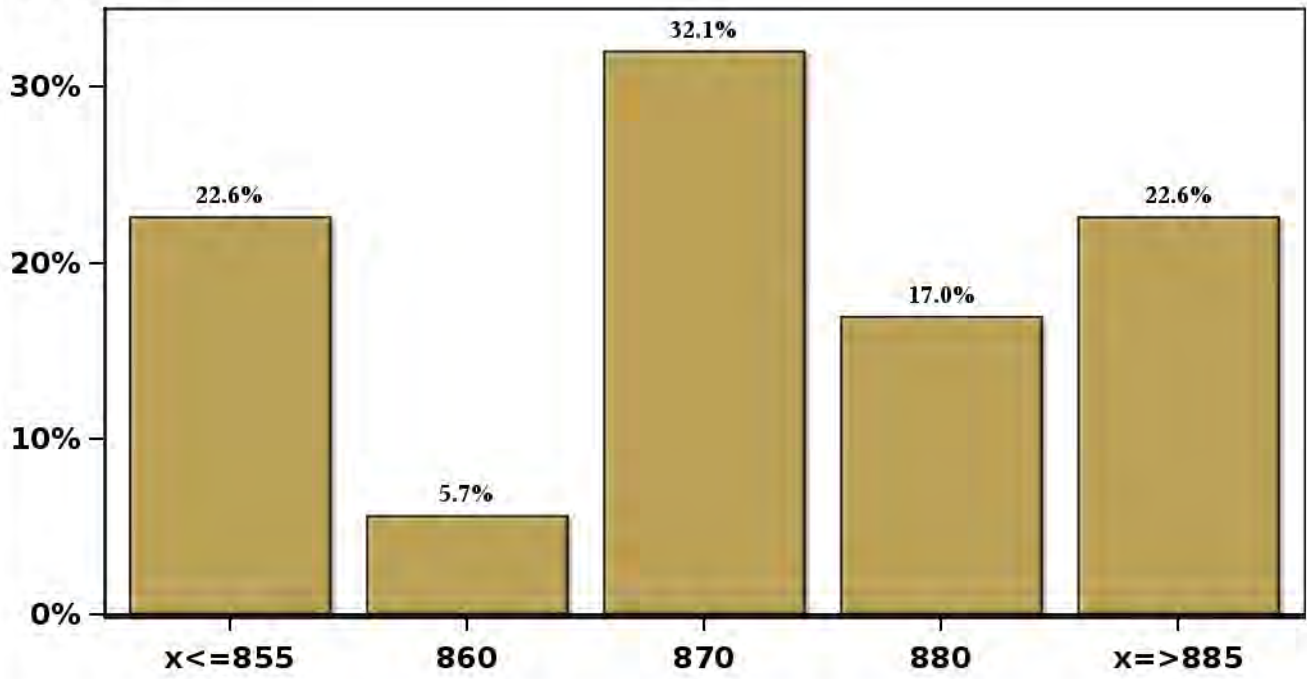


[Click to view summary table](#)

Monthly Survey On Expectations May 2026
Exchange Rate in eleven months (CH \$ per US\$)

Answers: 53 Median: \$870

% Obs.

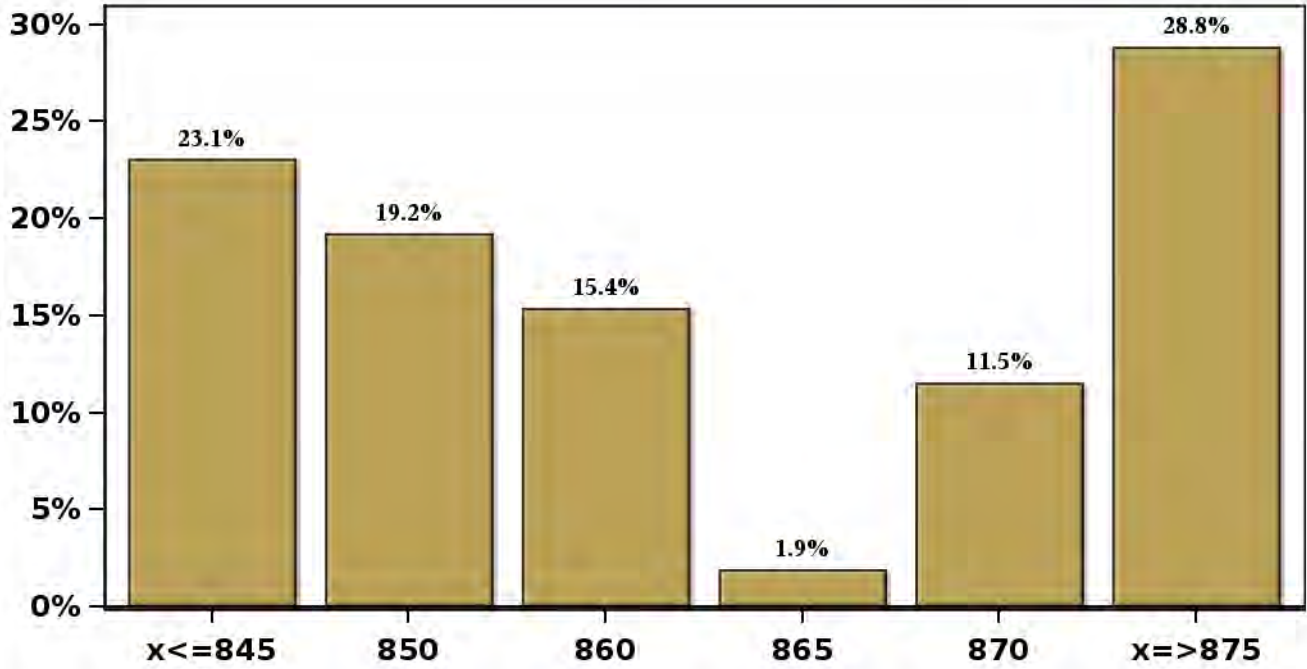


[Click to view summary table](#)

Monthly Survey On Expectations May 2026
Exchange Rate in twenty three months forward (CH \$ per US\$)

Answers: 52 Median: \$860

% Obs.

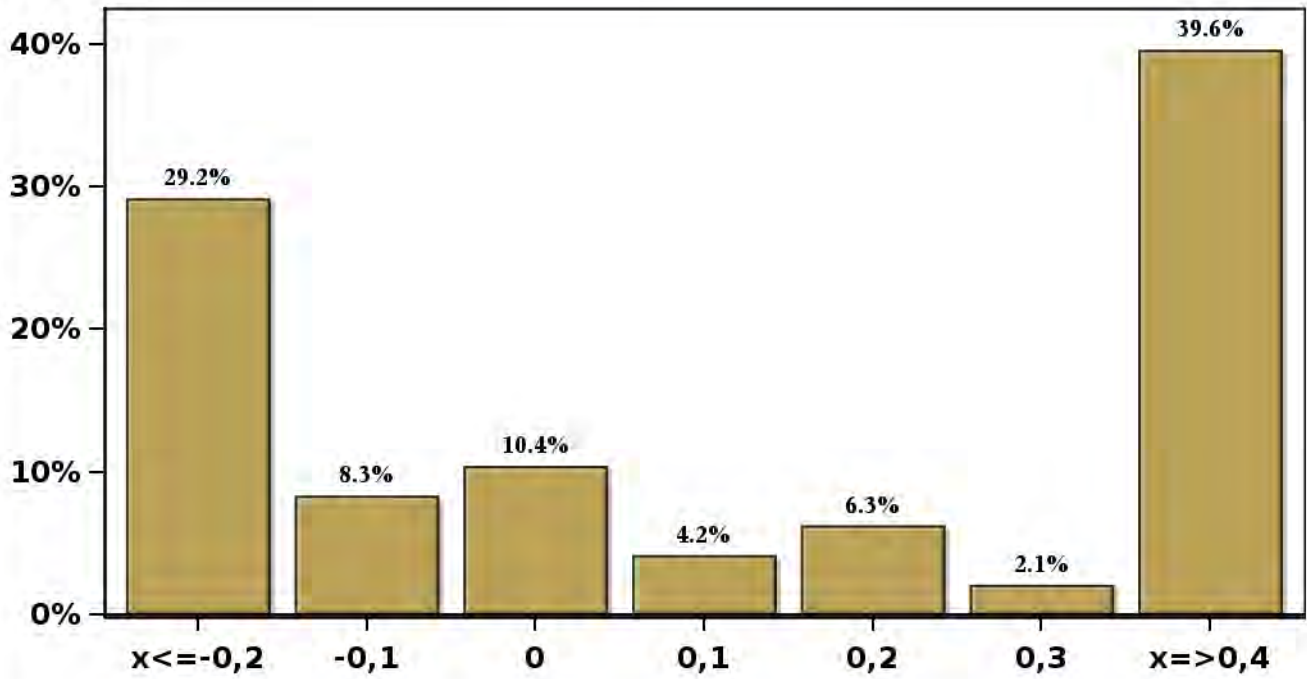


[Click to view summary table](#)

Monthly Survey On Expectations May 2026
IMACEC (Monthly Activity Index) one month ago

Answers: 48 Median: 0,1%

% Obs.

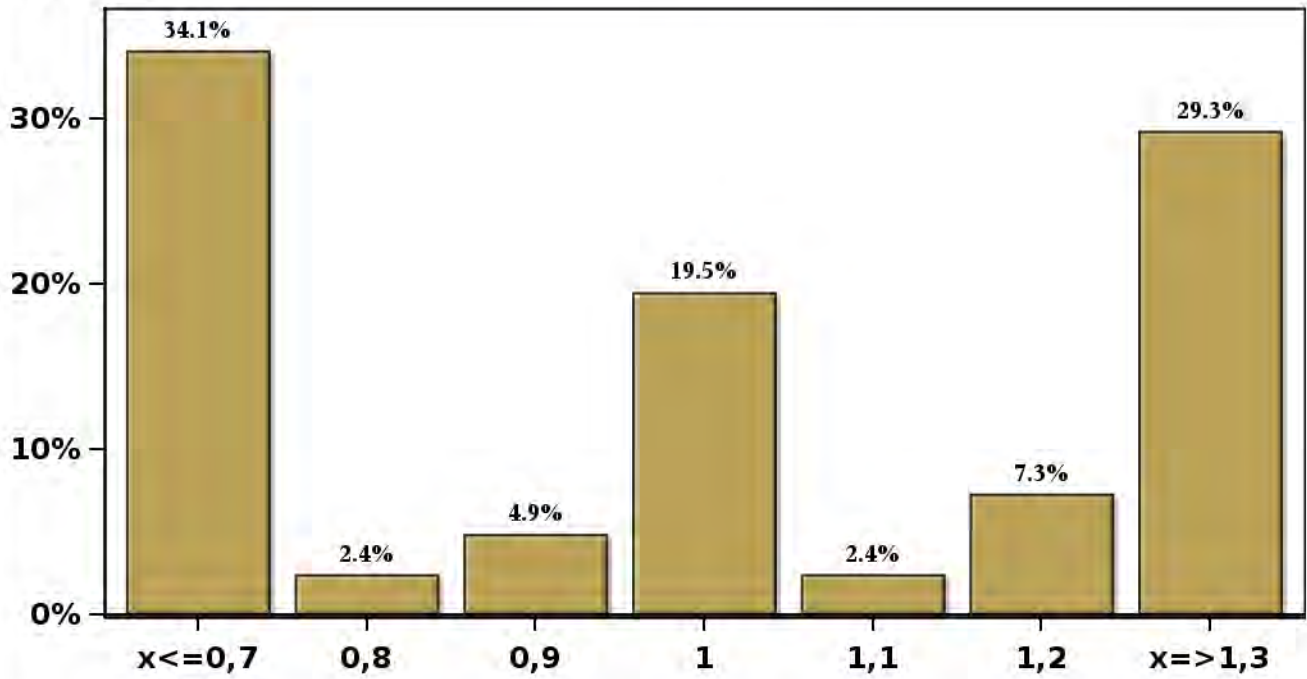


[Click to view summary table](#)

Monthly Survey On Expectations May 2026
IMACEC No Mining (Monthly Activity Index) one month ago

Answers: 41 Median: 1%

% Obs.



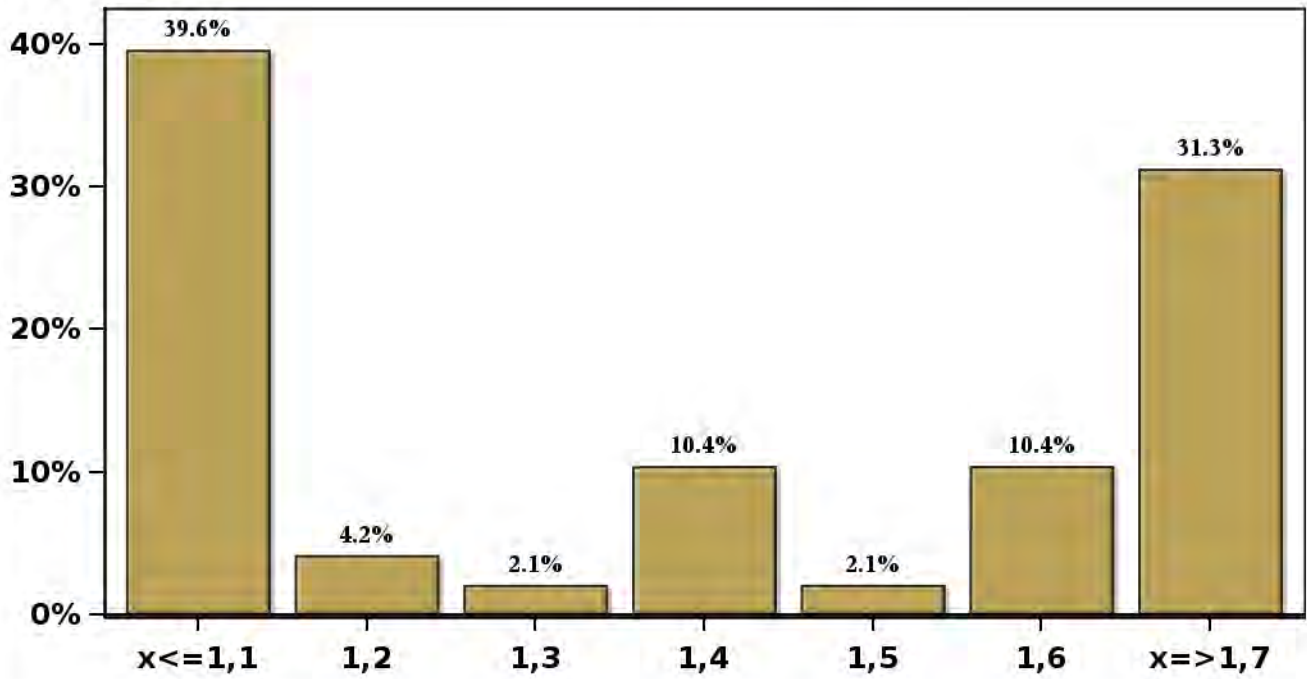
[Click to view summary table](#)

Monthly Survey On Expectations May 2026

GDP within calendar quarter of the survey

Answers: 48 Median: 1,4%

% Obs.



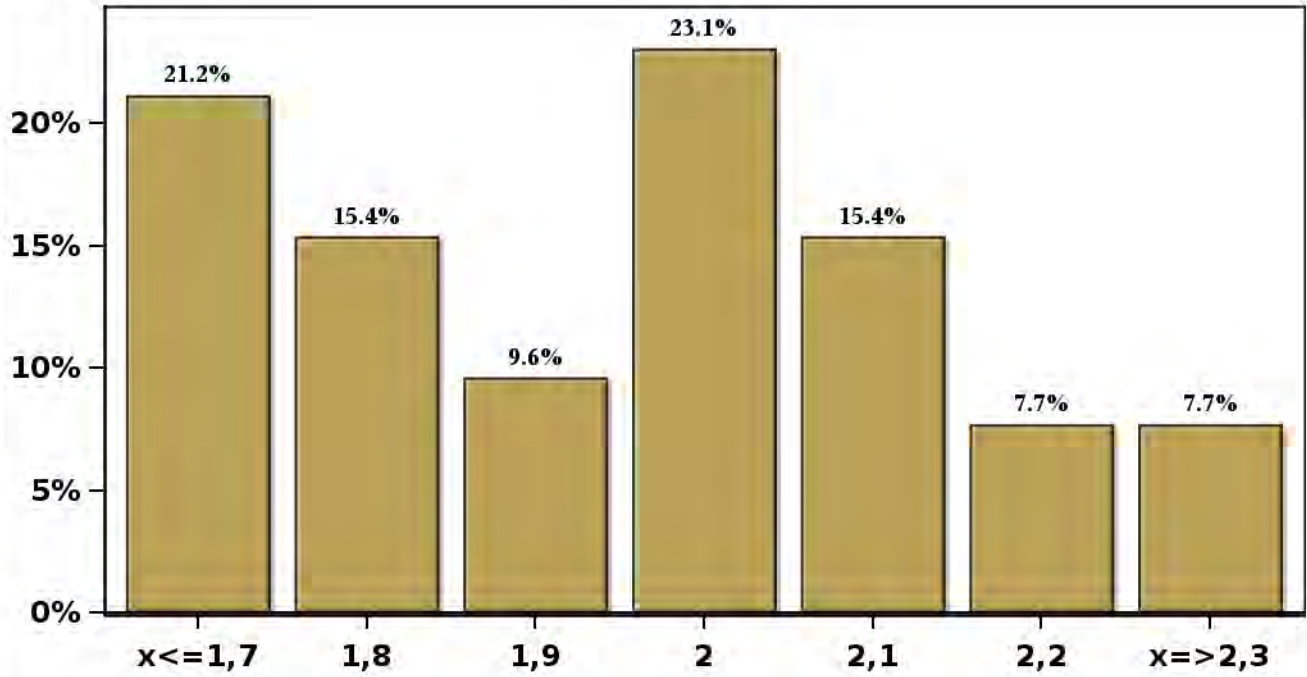
[Click to view summary table](#)

Monthly Survey On Expectations May 2026

GDP year 2026 (12-month change)

Answers: 52 Median: 2%

% Obs.



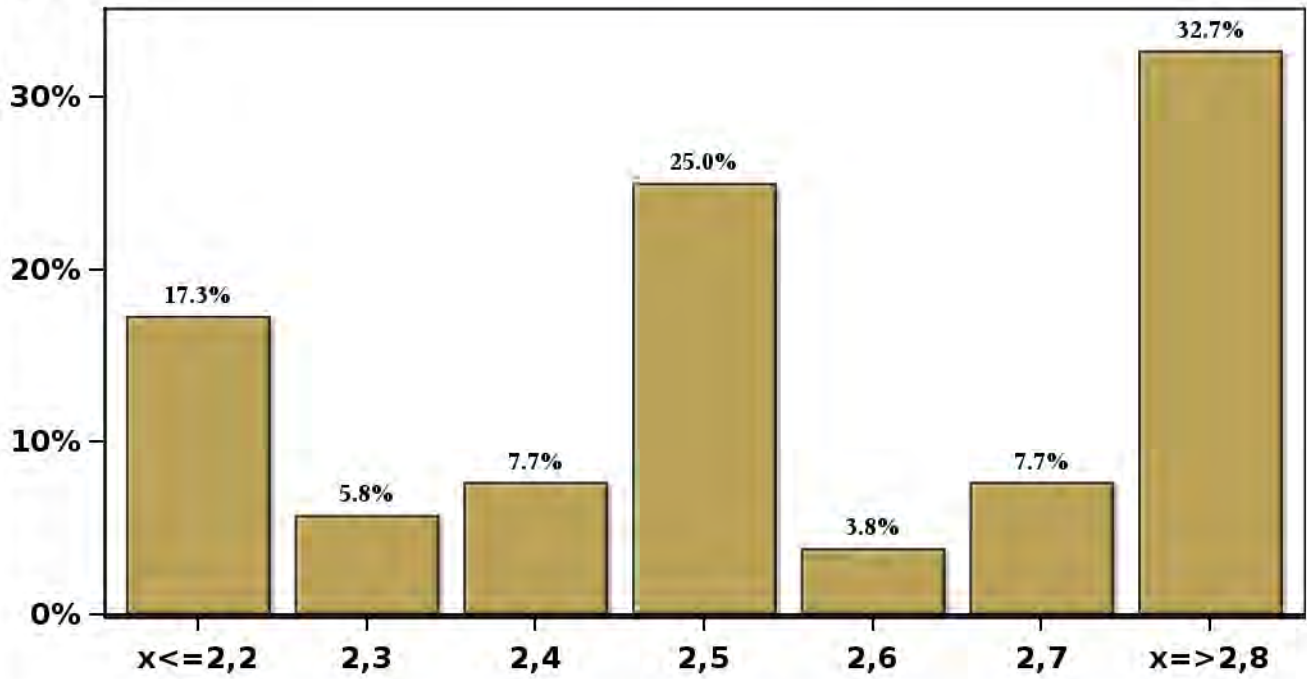
[Click to view summary table](#)

Monthly Survey On Expectations May 2026

GDP year 2027 (12-month change)

Answers: 52 Median: 2,5%

% Obs.



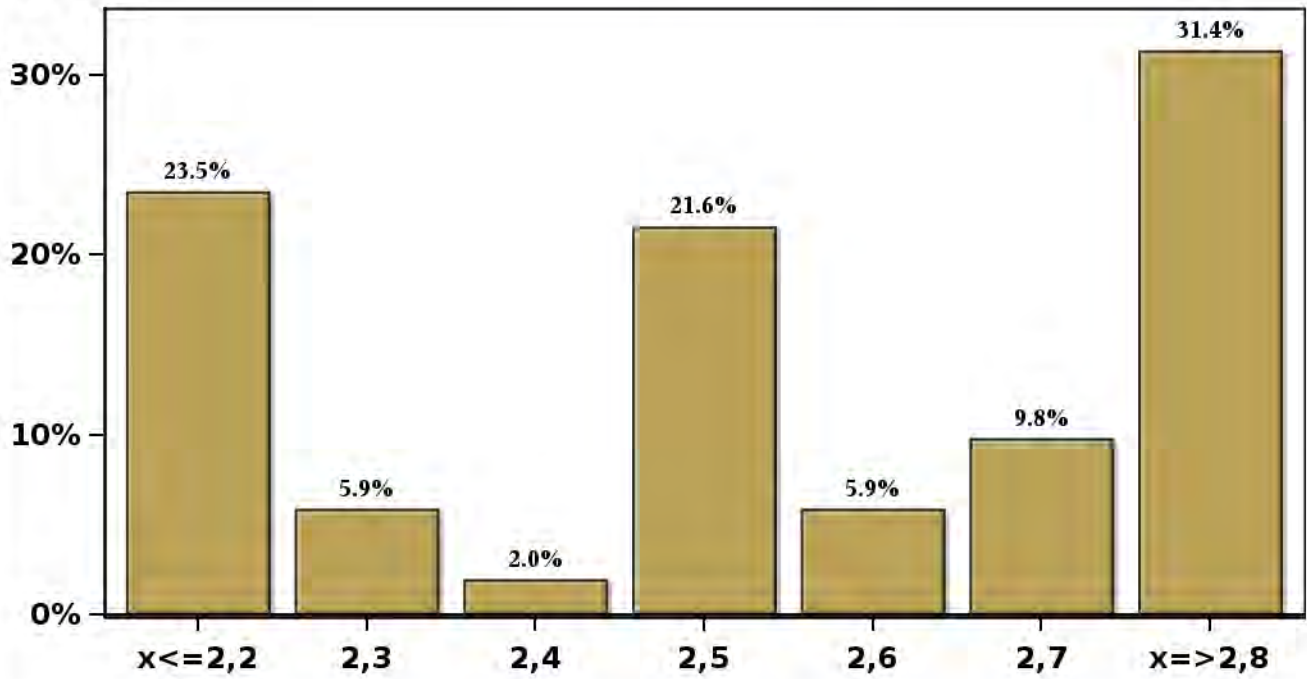
[Click to view summary table](#)

Monthly Survey On Expectations May 2026

GDP year 2028 (12-month change)

Answers: 51 Median: 2,5%

% Obs.

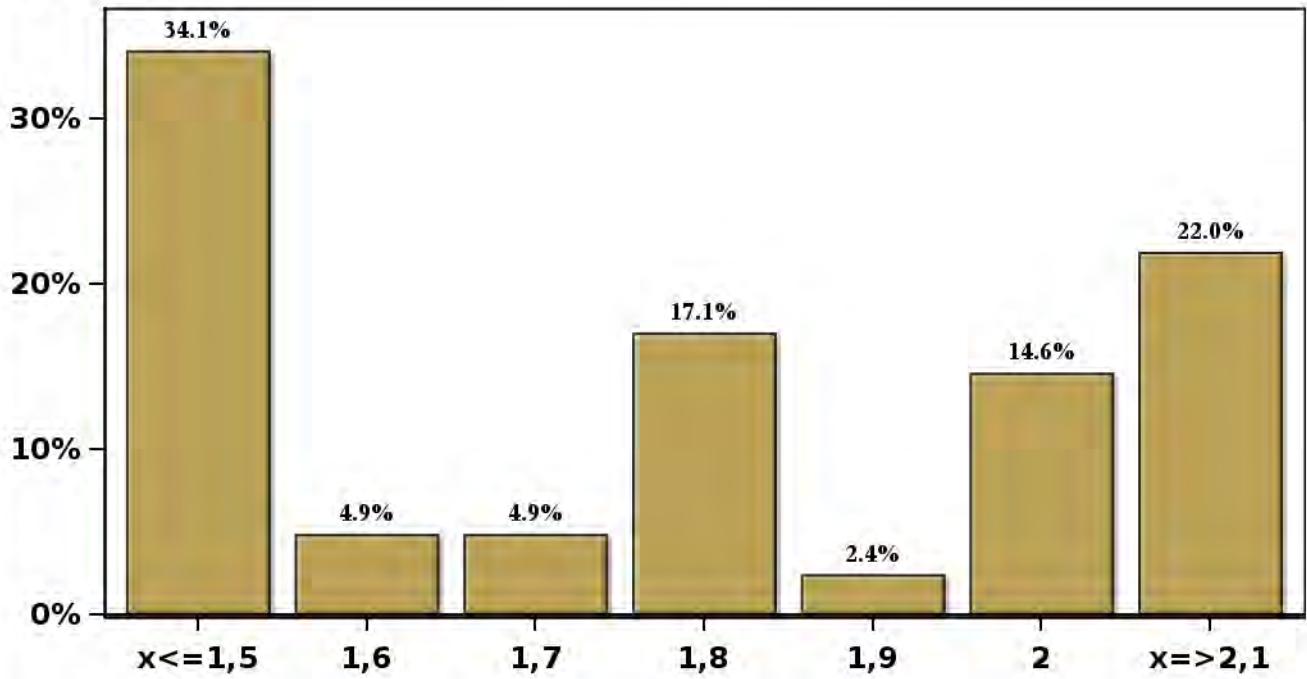


[Click to view summary table](#)

Monthly Survey On Expectations May 2026
GDP No Mining within calendar quarter of the survey

Answers: 41 Median: 1,8%

% Obs.

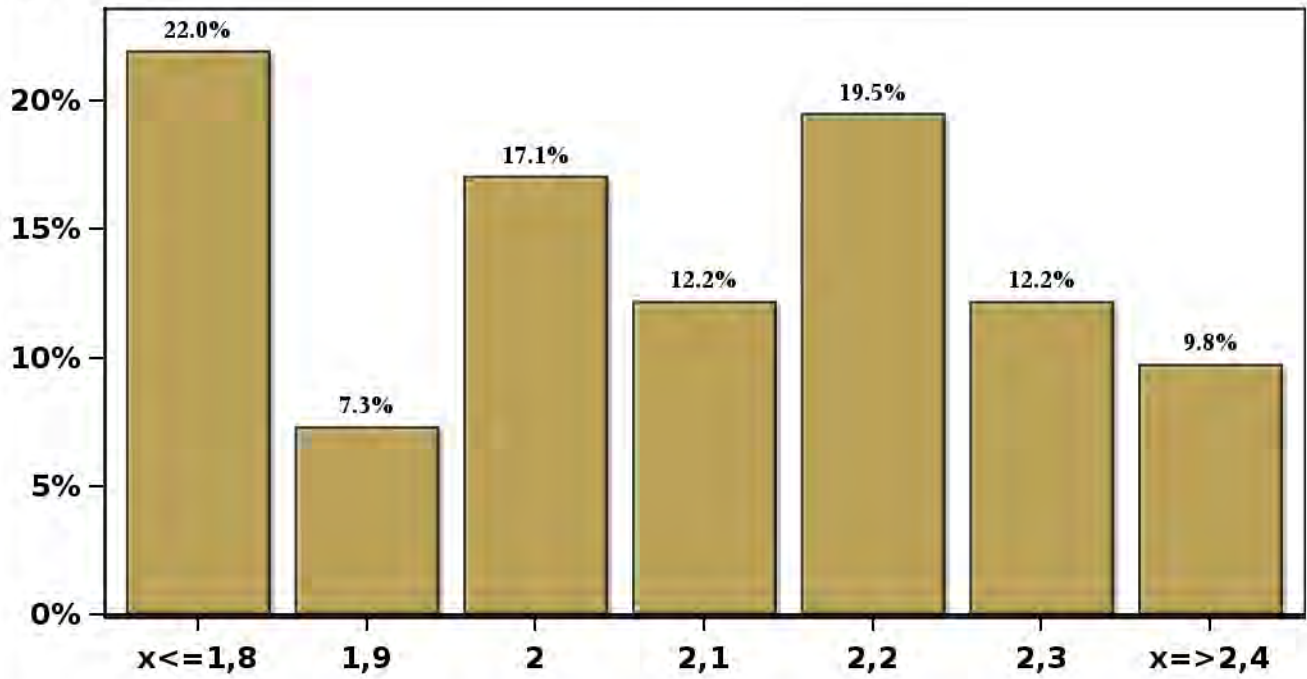


[Click to view summary table](#)

**Monthly Survey On Expectations May 2026
GDP No Mining year 2026 (12-month change)**

Answers: 41 Median: 2,1%

% Obs.

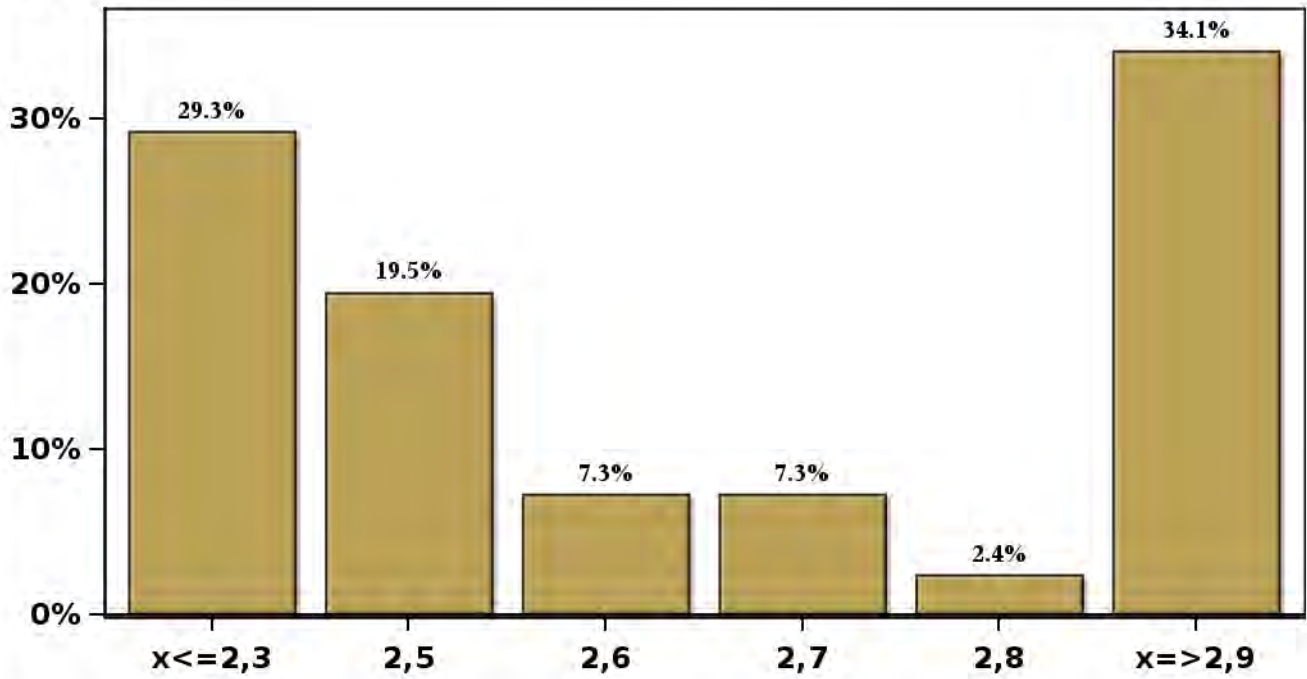


[Click to view summary table](#)

**Monthly Survey On Expectations May 2026
GDP No Mining year 2027 (12-month change)**

Answers: 41 Median: 2,6%

% Obs.

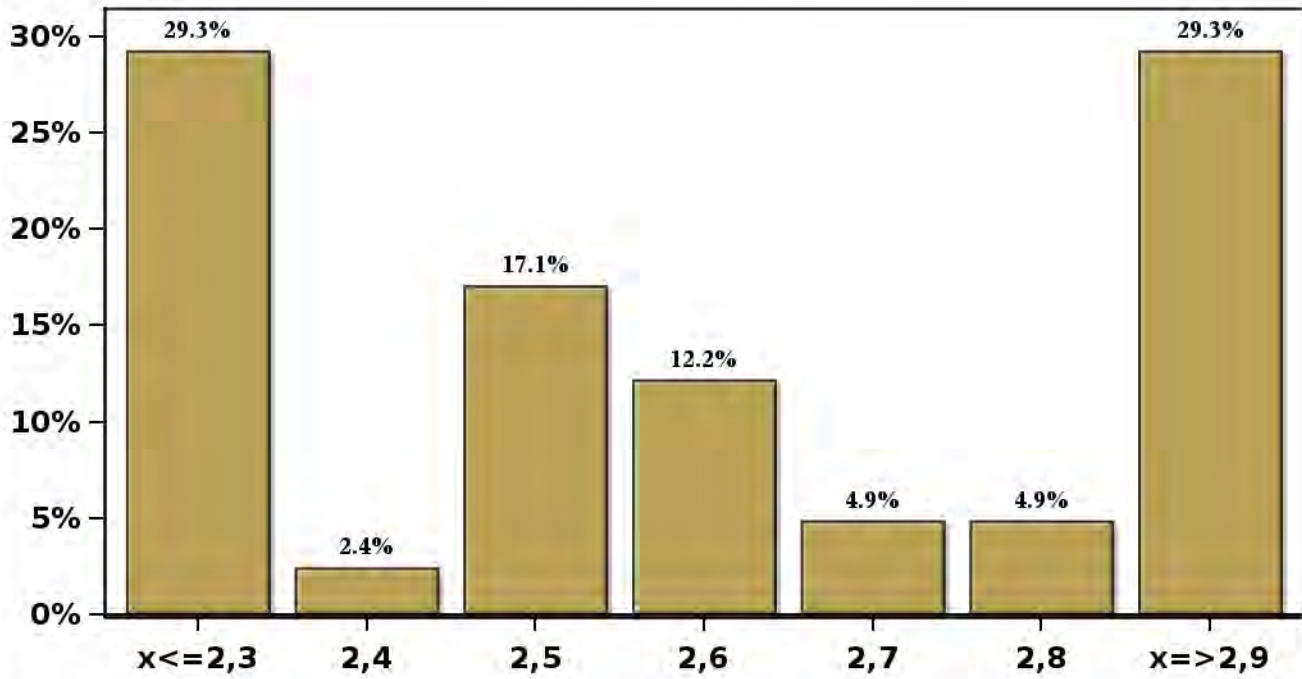


[Click to view summary table](#)

Monthly Survey On Expectations May 2026
GDP No Mining year 2028 (12-month change)

Answers: 41 Median: 2,6%

% Obs.

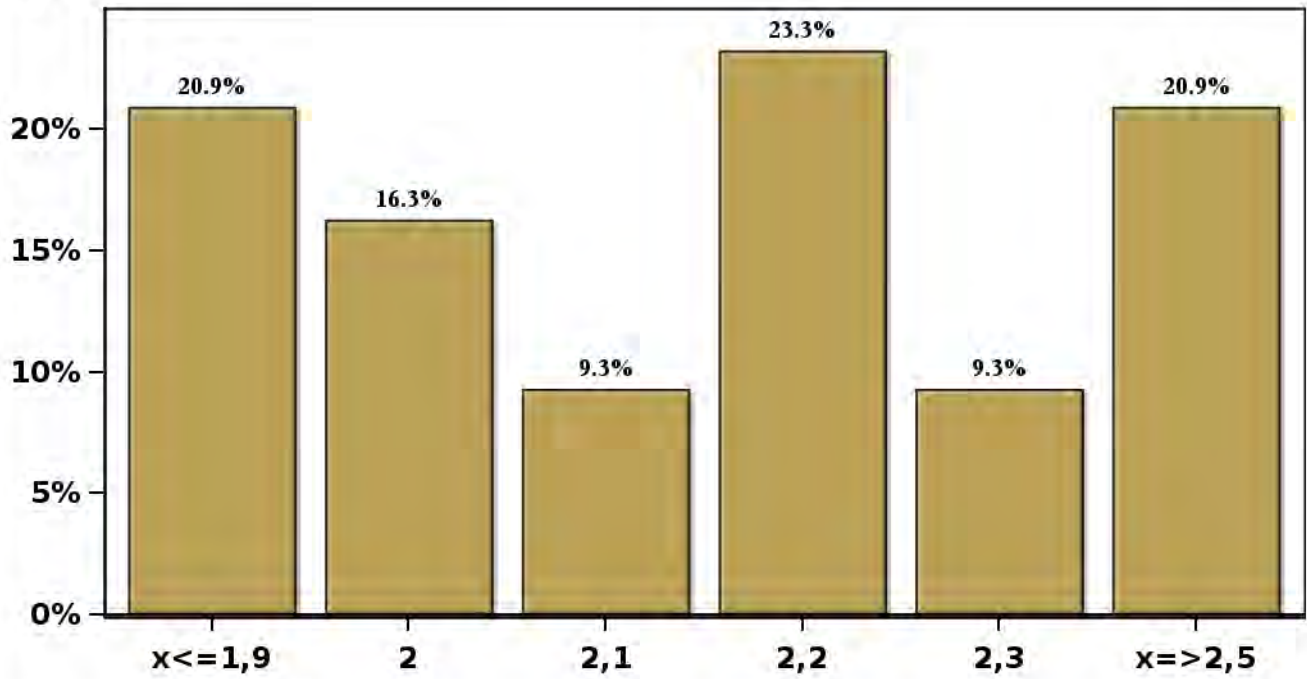


[Click to view summary table](#)

**Monthly Survey On Expectations May 2026
HFC including NPO year 2026 (12-month change)**

Answers: 43 Median: 2,2%

% Obs.

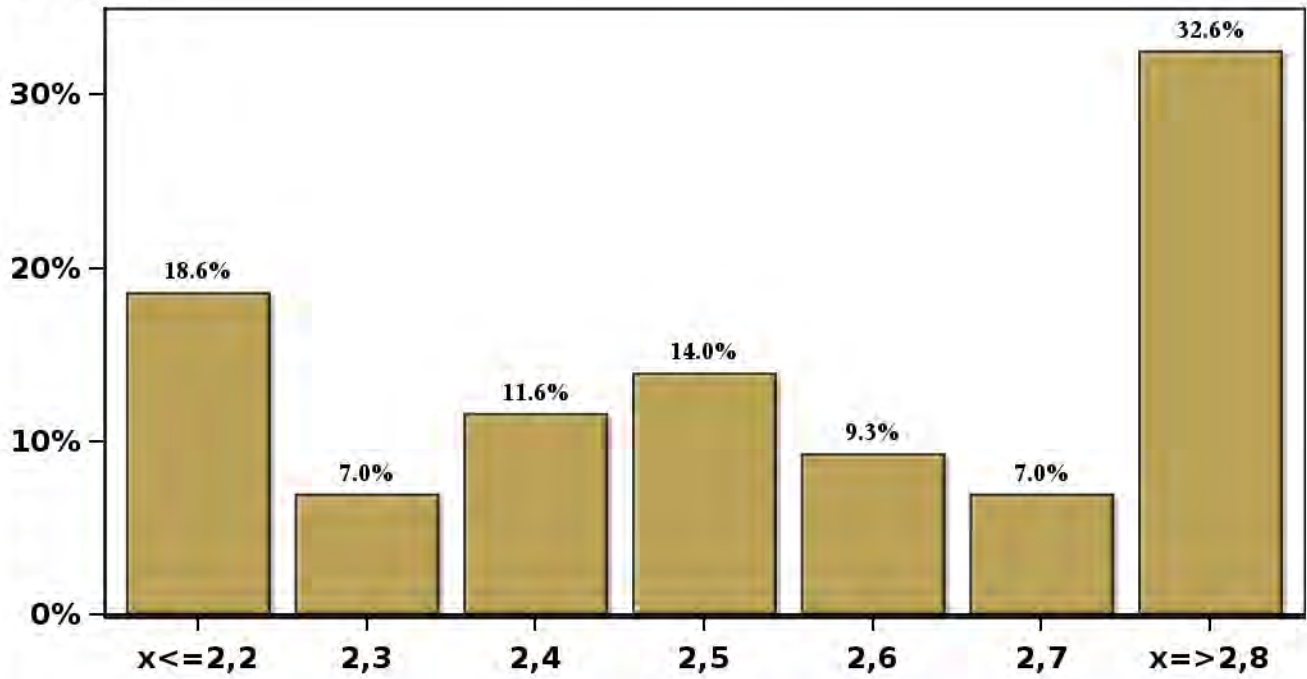


[Click to view summary table](#)

Monthly Survey On Expectations May 2026
HFC including NPO year 2027 (12-month change)

Answers: 43 Median: 2,5%

% Obs.



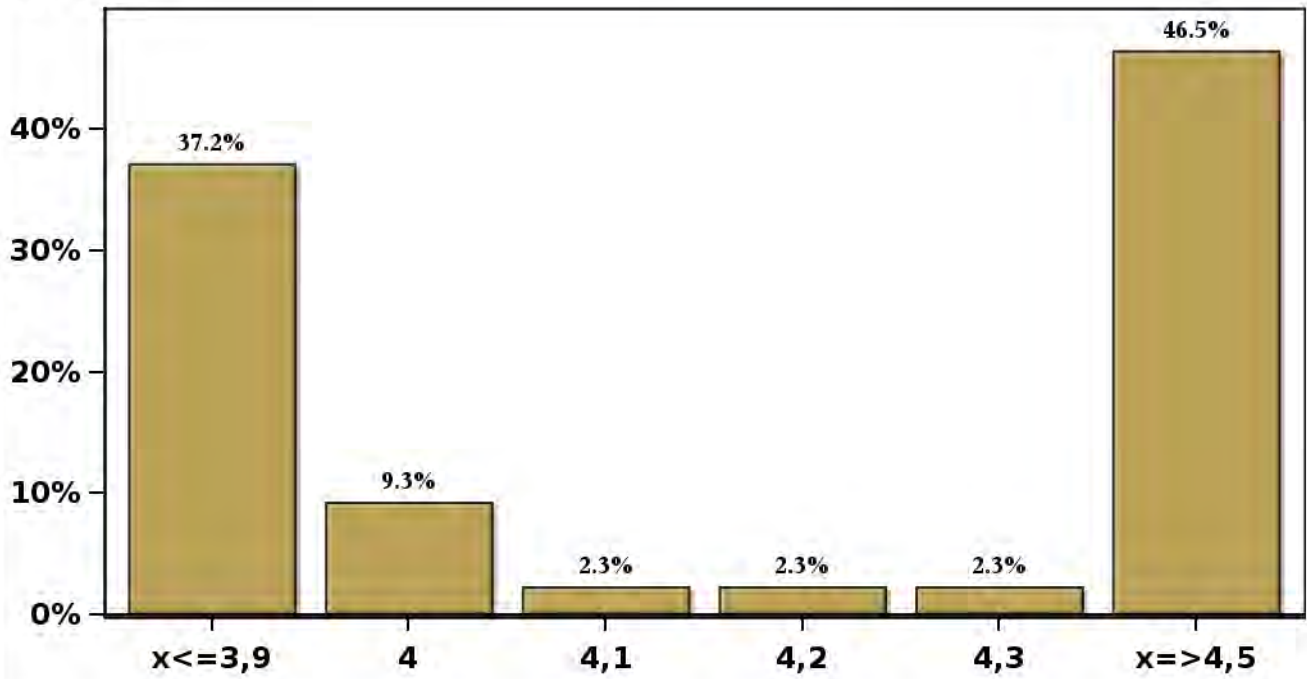
[Click to view summary table](#)

Monthly Survey On Expectations May 2026

GFCF year 2026 (12-month change)

Answers: 43 Median: 4,2%

% Obs.

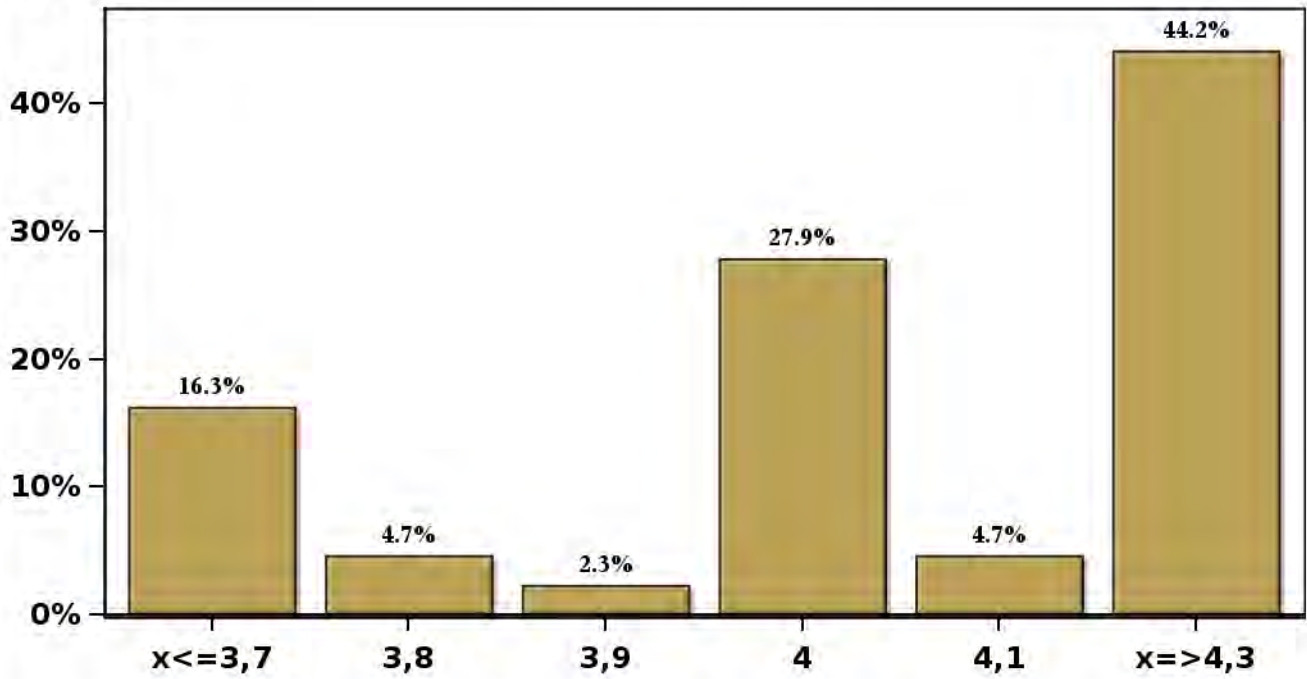


[Click to view summary table](#)

Monthly Survey On Expectations May 2026
GFCF year 2027 (12-month change)

Answers: 43 Median: 4%

% Obs.

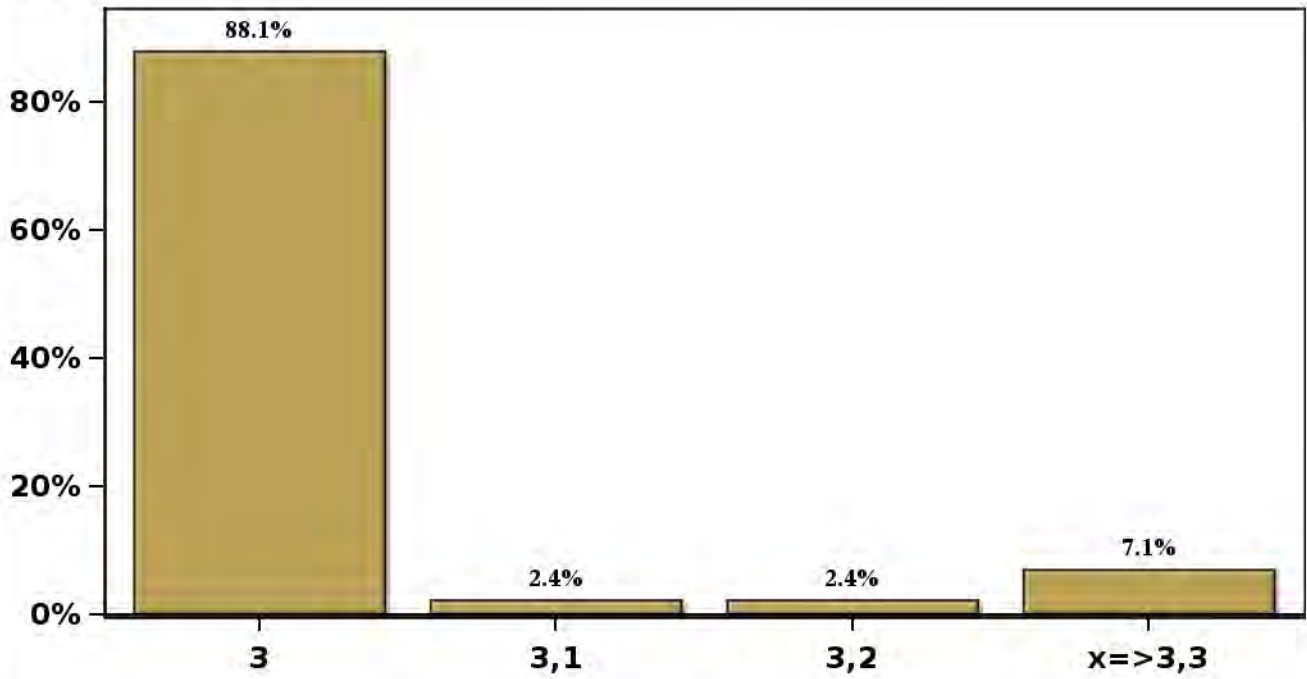


[Click to view summary table](#)

Monthly Survey On Expectations May 2026
Long-term Average Inflation (12-month change)

Answers: 42 Median: 3%

% Obs.

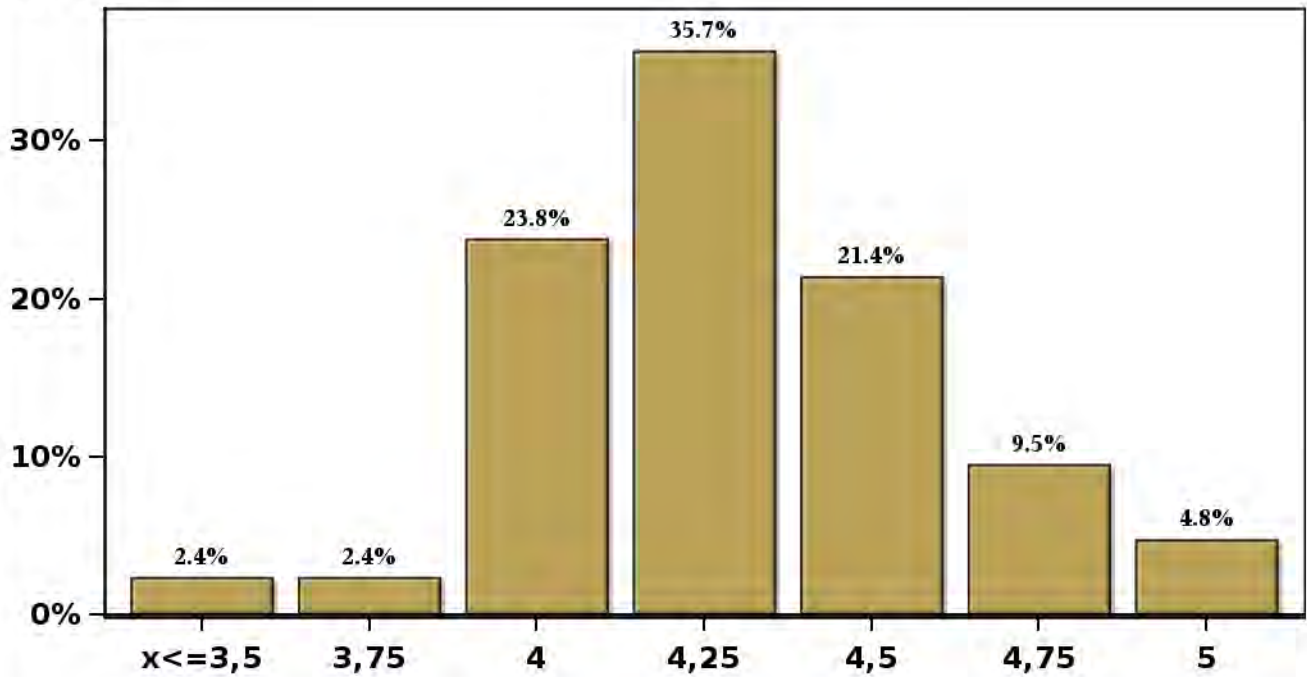


[Click to view summary table](#)

Monthly Survey On Expectations May 2026
Long-term Average Monetary Policy rate target

Answers: 42 Median: 4,25%

% Obs.

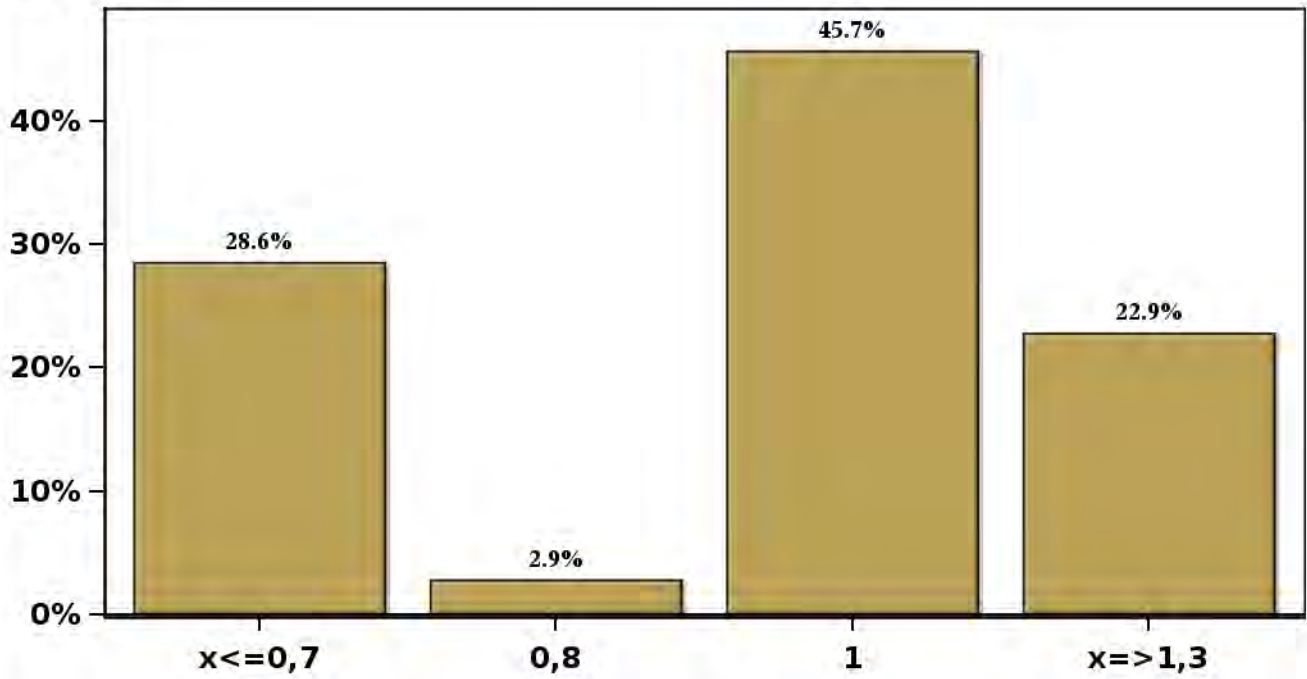


[Click to view summary table](#)

Monthly Survey On Expectations May 2026
Long-term Average Exchange Rate (12-month change)

Answers: 35 Median: 1%

% Obs.

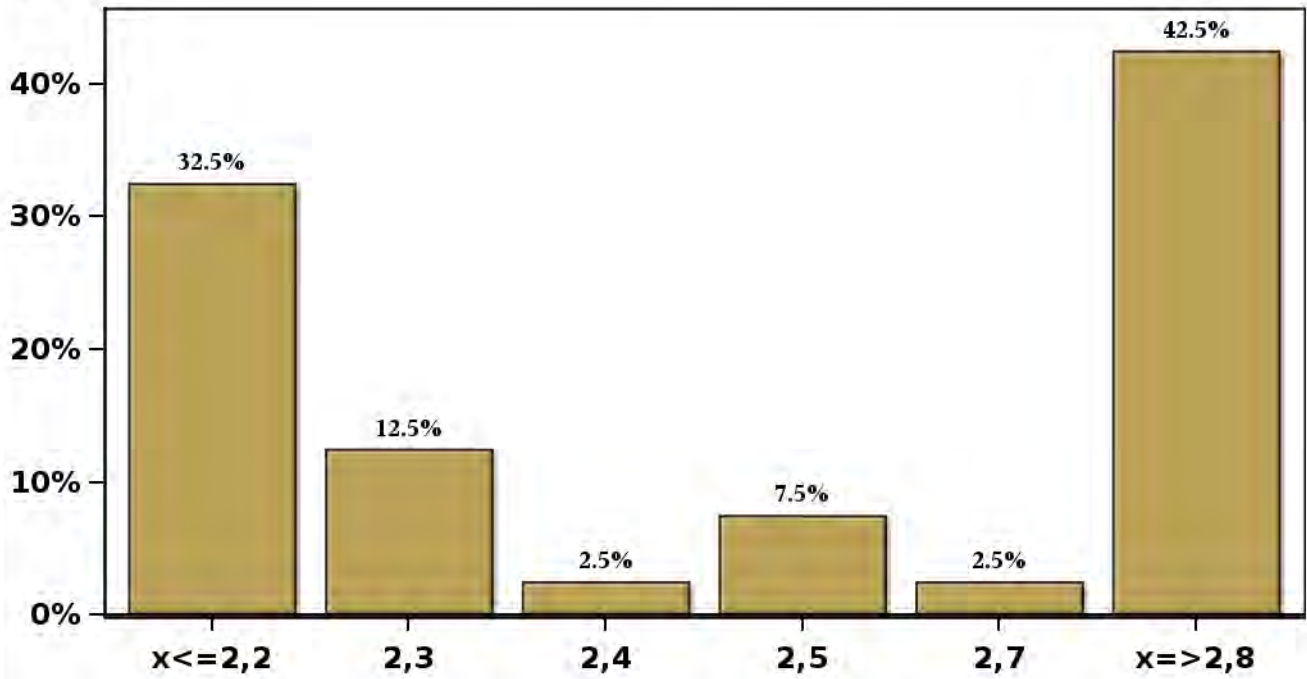


[Click to view summary table](#)

Monthly Survey On Expectations May 2026
Long-term Average GDP (12-month change)

Answers: 40 Median: 2,5%

% Obs.



[Click to view summary table](#)