

# MONTHLY SURVEY ON EXPECTATIONS April 2026

Sent on: 6 April 2026

Deadline for responses: 9 April 2026

Variable	Median	Decile 1	Decile 9	Answers	Graph
<b>01. Inflation (% change)</b>					
Current month (monthly change)	1,40	0,50	1,70	49	<a href="#">Graph1</a>
Next month (monthly change)	0,40	0,20	0,90	47	<a href="#">Graph2</a>
In eleven months (12-month change)	4,00	3,40	4,80	48	<a href="#">Graph3</a>
In twenty three months (12-month change)	3,00	3,00	3,50	49	<a href="#">Graph4</a>
In thirty five months (12-month change)	3,00	3,00	3,10	48	<a href="#">Graph5</a>
December 2026 (12-month change)	4,30	3,60	4,90	49	<a href="#">Graph6</a>
December 2027 (12-month change)	3,00	2,90	3,50	49	<a href="#">Graph7</a>
<b>02. Inflation without volatiles (% change) (**)</b>					
Current month (monthly change)	0,50	0,30	0,90	37	<a href="#">Graph8</a>
Next month (monthly change)	0,30	0,20	0,60	36	<a href="#">Graph9</a>
In eleven months (12-month change)	3,40	3,00	4,00	37	<a href="#">Graph10</a>
In twenty three months (12-month change)	3,00	3,00	3,50	35	<a href="#">Graph11</a>
In thirty five months (12-month change)	3,00	2,90	3,20	35	<a href="#">Graph12</a>
December 2026 (12-month change)	3,60	3,20	4,00	37	<a href="#">Graph13</a>
December 2027 (12-month change)	3,10	3,00	3,50	36	<a href="#">Graph14</a>
<b>03. Monetary Policy rate target (%) (*)</b>					
Following meeting	4,50	4,50	4,50	49	<a href="#">Graph15</a>
Second following meeting	4,50	4,50	4,75	49	<a href="#">Graph16</a>
In five months	4,50	4,50	4,75	49	<a href="#">Graph17</a>
December 2026	4,50	4,25	4,75	49	<a href="#">Graph18</a>
In eleven months	4,50	4,25	4,75	49	<a href="#">Graph19</a>
In seventeen months	4,25	4,00	4,50	49	<a href="#">Graph20</a>
In twenty three months	4,25	4,00	4,50	49	<a href="#">Graph21</a>
In thirty five months	4,25	4,00	4,50	49	<a href="#">Graph22</a>
<b>04. Exchange Rate (CH \$ per US\$ 1) (*)</b>					
In two months	900,00	880,00	920,00	48	<a href="#">Graph23</a>
In eleven months	880,00	860,00	900,00	48	<a href="#">Graph24</a>
In twenty three months forward	860,00	820,00	915,00	48	<a href="#">Graph25</a>
<b>05. IMACEC (Monthly Activity Index)</b>					
One month ago	0,70	-0,20	2,20	45	<a href="#">Graph26</a>
<b>06. IMACEC No Mining (monthly activity index)</b>					
One month ago	1,00	0,00	2,20	37	<a href="#">Graph27</a>
<b>07. GDP (12-month change)</b>					
Within calendar quarter of the survey	1,70	0,10	2,30	45	<a href="#">Graph28</a>
Year 2026	2,00	1,60	2,50	48	<a href="#">Graph29</a>
Year 2027	2,50	2,00	3,00	48	<a href="#">Graph30</a>
Year 2028	2,50	2,00	3,20	47	<a href="#">Graph31</a>
<b>08. GDP No Mining (12-month change)</b>					
Within calendar quarter of the survey	1,90	0,20	2,70	38	<a href="#">Graph32</a>
Year 2026	2,10	1,70	2,60	40	<a href="#">Graph33</a>
Year 2027	2,50	2,10	3,10	40	<a href="#">Graph34</a>
Year 2028	2,50	2,00	3,40	39	<a href="#">Graph35</a>
<b>09. HFC including NPO (12-month change)</b>					
Year 2026	2,20	2,00	2,60	39	<a href="#">Graph36</a>
Year 2027	2,50	2,00	3,20	39	<a href="#">Graph37</a>
<b>10. GFCF (12-month change)</b>					
Year 2026	4,20	1,80	6,00	39	<a href="#">Graph38</a>
Year 2027	4,30	3,50	6,00	39	<a href="#">Graph39</a>

(\*) End of the month.

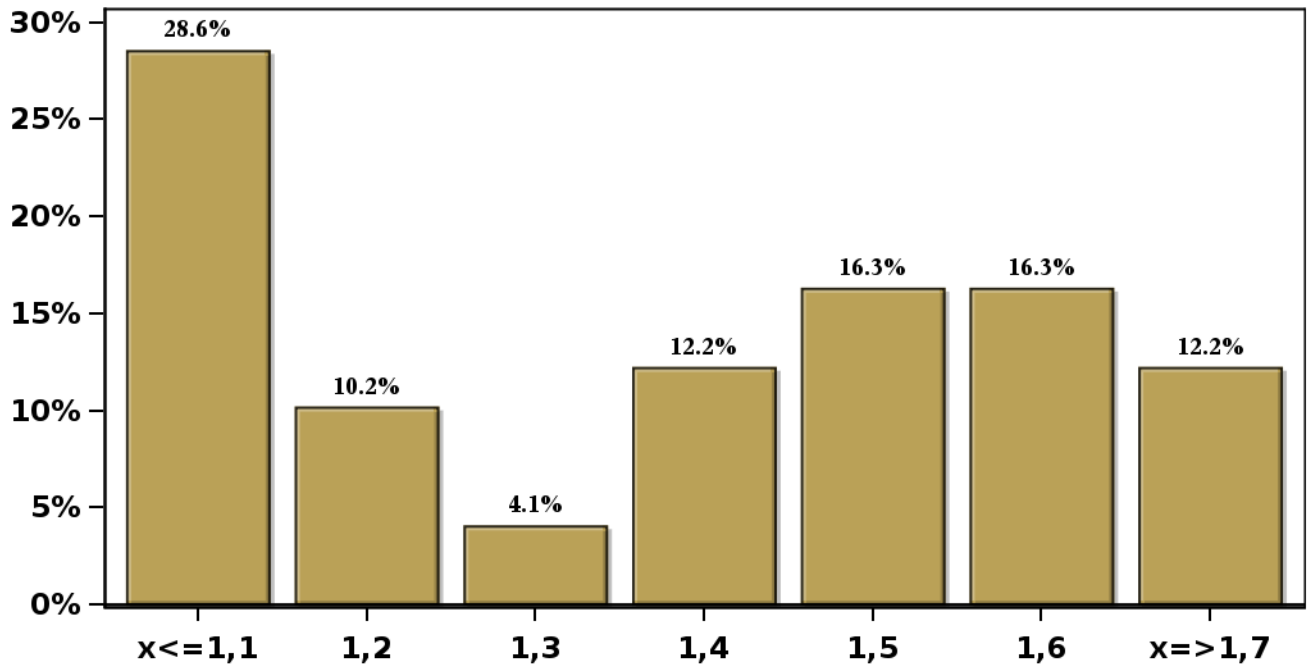
Monthly survey of selected academics, consultants, and executives or advisors of financial institutions and corporations. It is completed the day after the publication of the CPI and it is published the day after its reception, at 8:30 hrs. approximately ([www.bcentral.cl](http://www.bcentral.cl), Statistics section, Economic Surveys, Website: <https://www.bcentral.cl/en/areas/economic-surveys>)  
The survey period comprises the week prior to publication

# Monthly Survey On Expectations April 2026

## Inflation current month (monthly change)

Answers: 49 Median: 1,4%

% Obs.

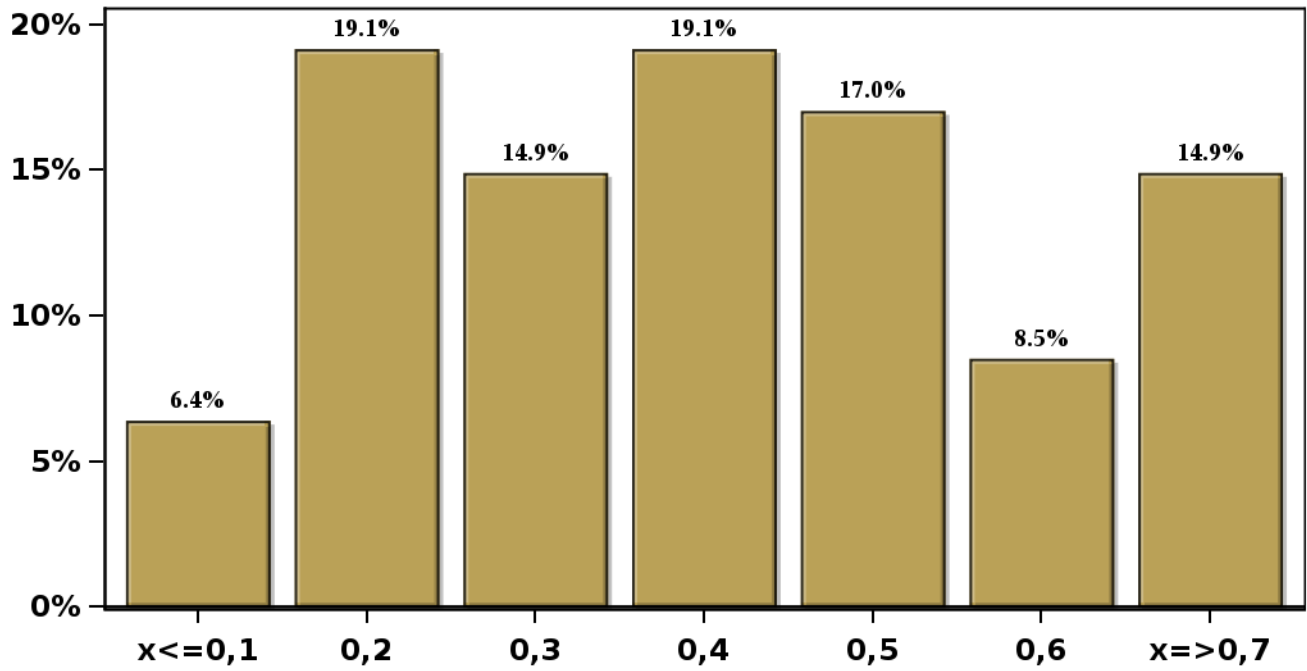


[Click to view summary table](#)

**Monthly Survey On Expectations April 2026**  
**Inflation next month (monthly change)**

**Answers: 47 Median: 0,4%**

**% Obs.**

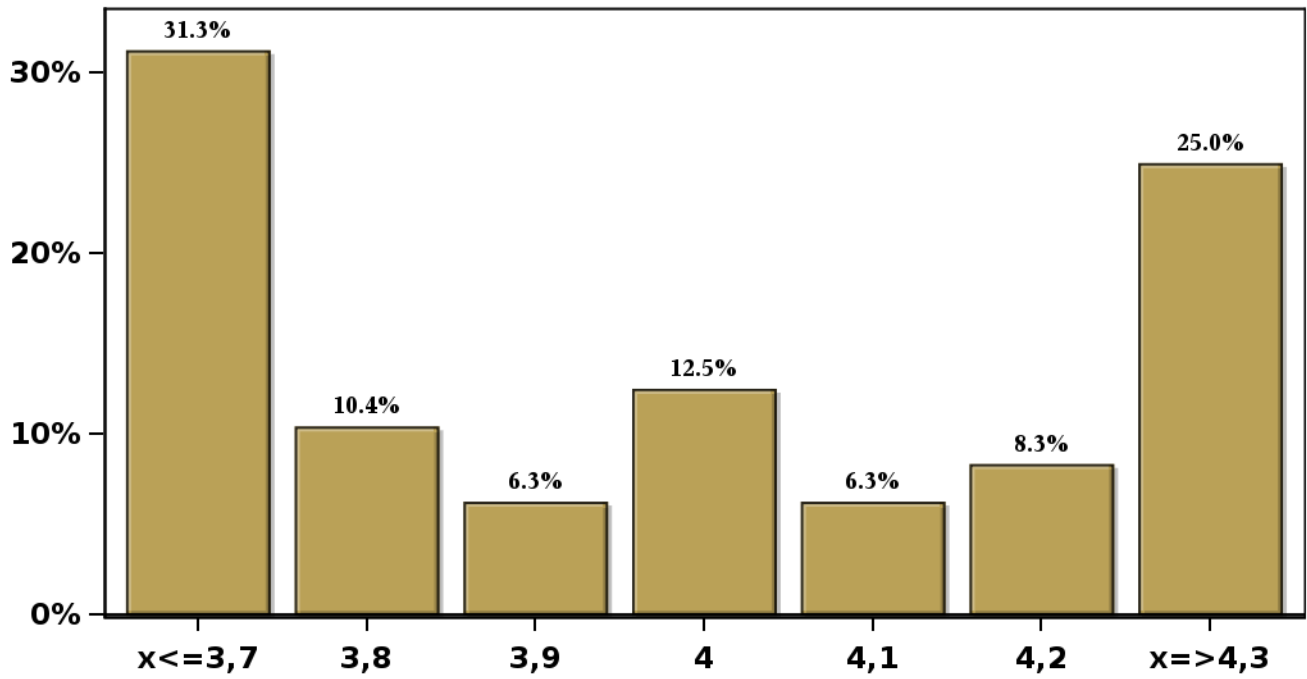


[Click to view summary table](#)

**Monthly Survey On Expectations April 2026  
Inflation in eleven months (12-month change)**

**Answers: 48 Median: 4%**

**% Obs.**

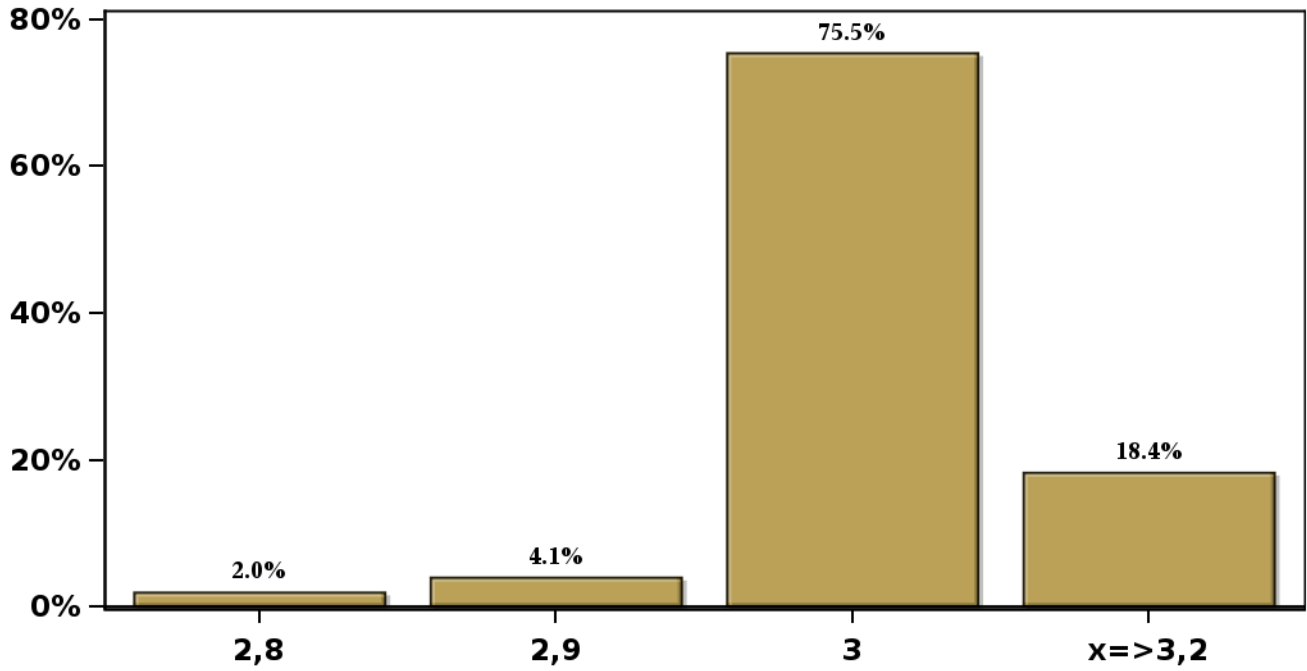


[Click to view summary table](#)

**Monthly Survey On Expectations April 2026**  
**Inflation in twenty three months (12-month change)**

**Answers: 49 Median: 3%**

**% Obs.**

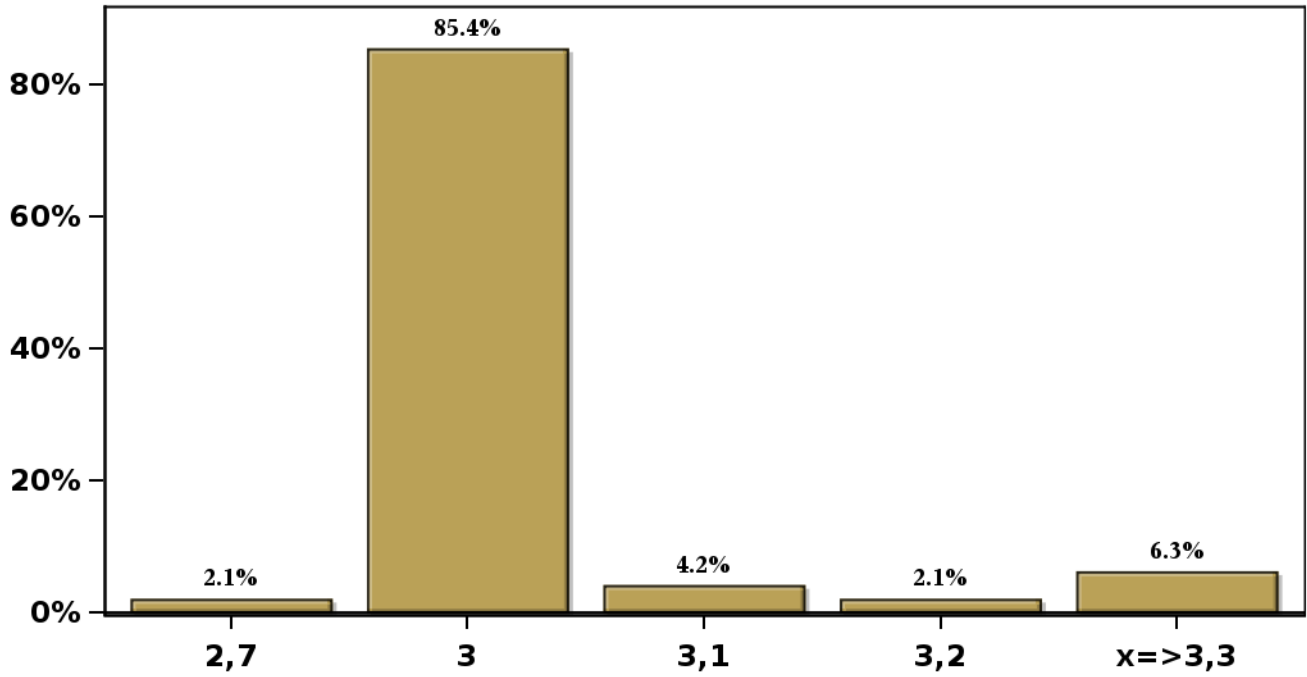


[Click to view summary table](#)

**Monthly Survey On Expectations April 2026**  
**Inflation in thirty five months (12-month change)**

**Answers: 48 Median: 3%**

**% Obs.**

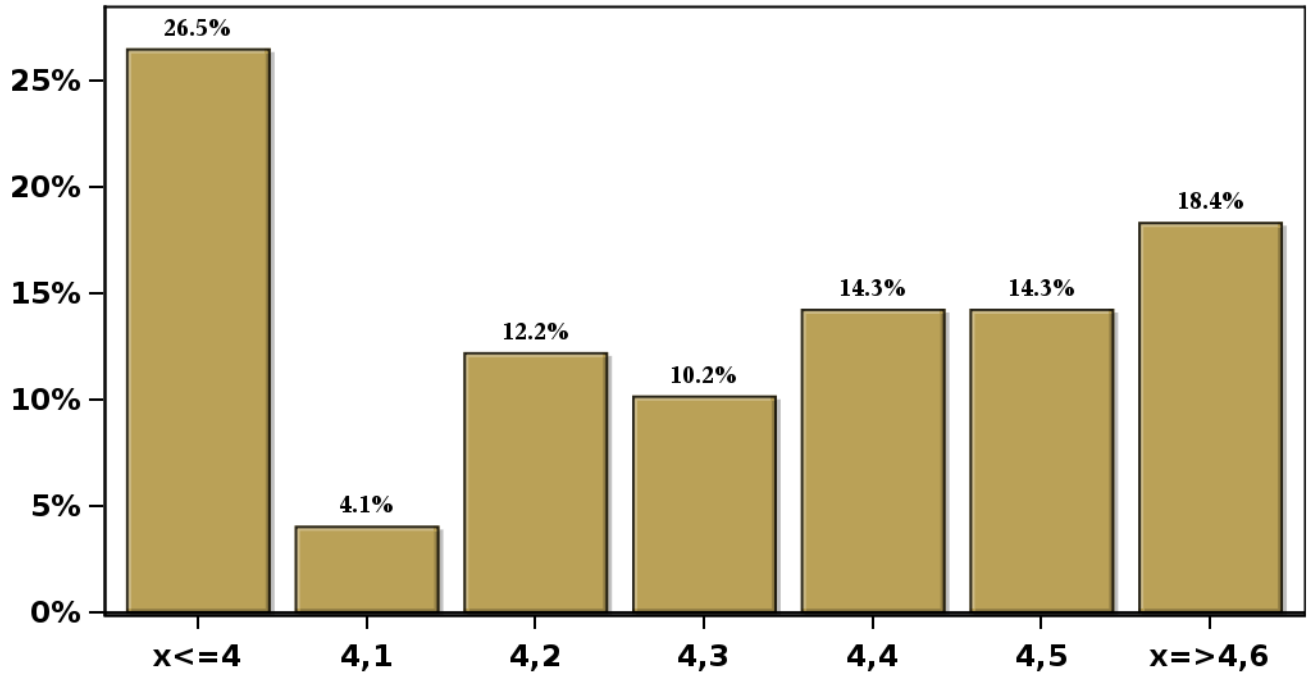


[Click to view summary table](#)

**Monthly Survey On Expectations April 2026  
Inflation december 2026 ( 12-month change )**

**Answers: 49 Median: 4,3%**

**% Obs.**

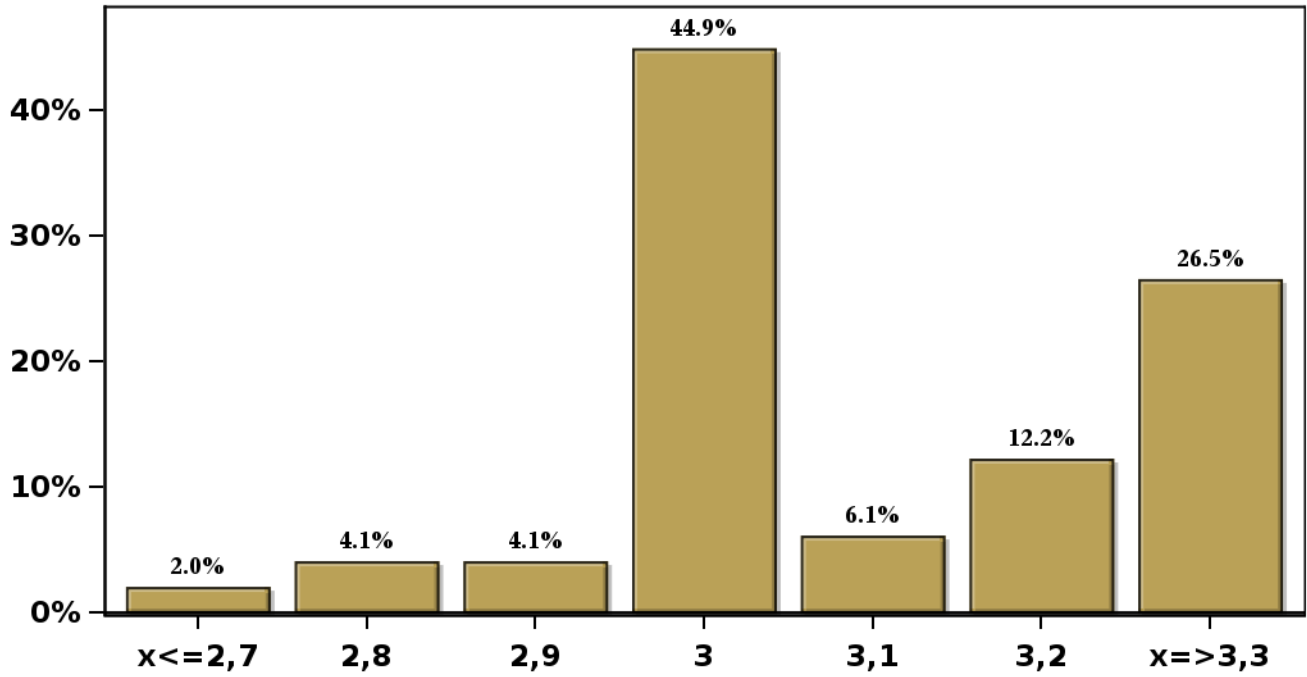


[Click to view summary table](#)

**Monthly Survey On Expectations April 2026  
Inflation december 2027 ( 12-month change )**

**Answers: 49 Median: 3%**

**% Obs.**

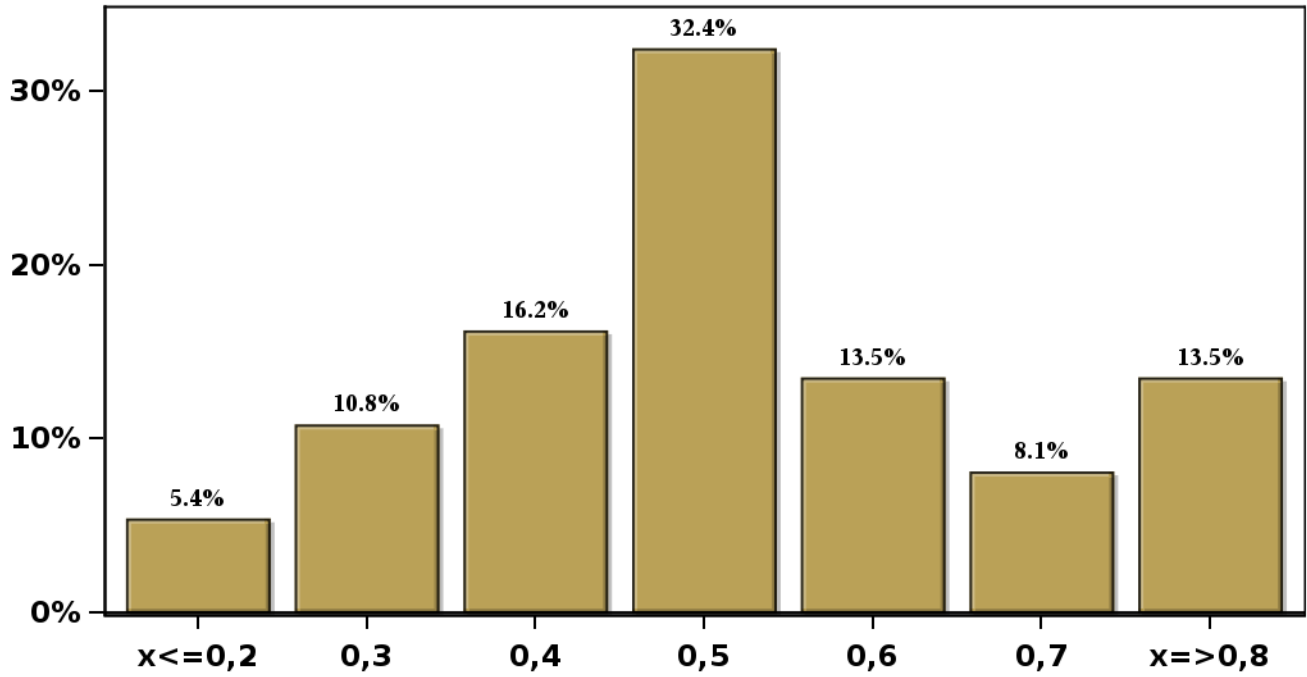


[Click to view summary table](#)

**Monthly Survey On Expectations April 2026**  
**Inflation without volatiles current month (monthly change)**

**Answers: 37 Median: 0,5%**

**% Obs.**

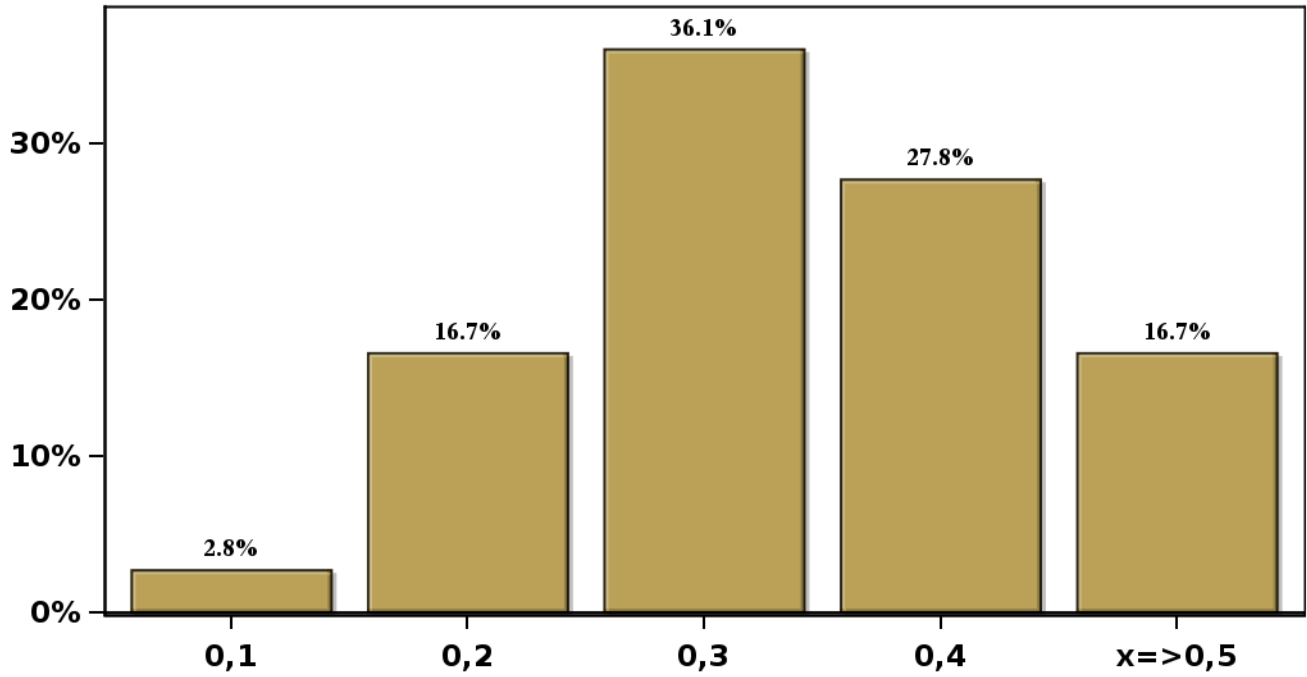


[Click to view summary table](#)

**Monthly Survey On Expectations April 2026**  
**Inflation without volatiles next month (monthly change)**

**Answers: 36 Median: 0,3%**

**% Obs.**

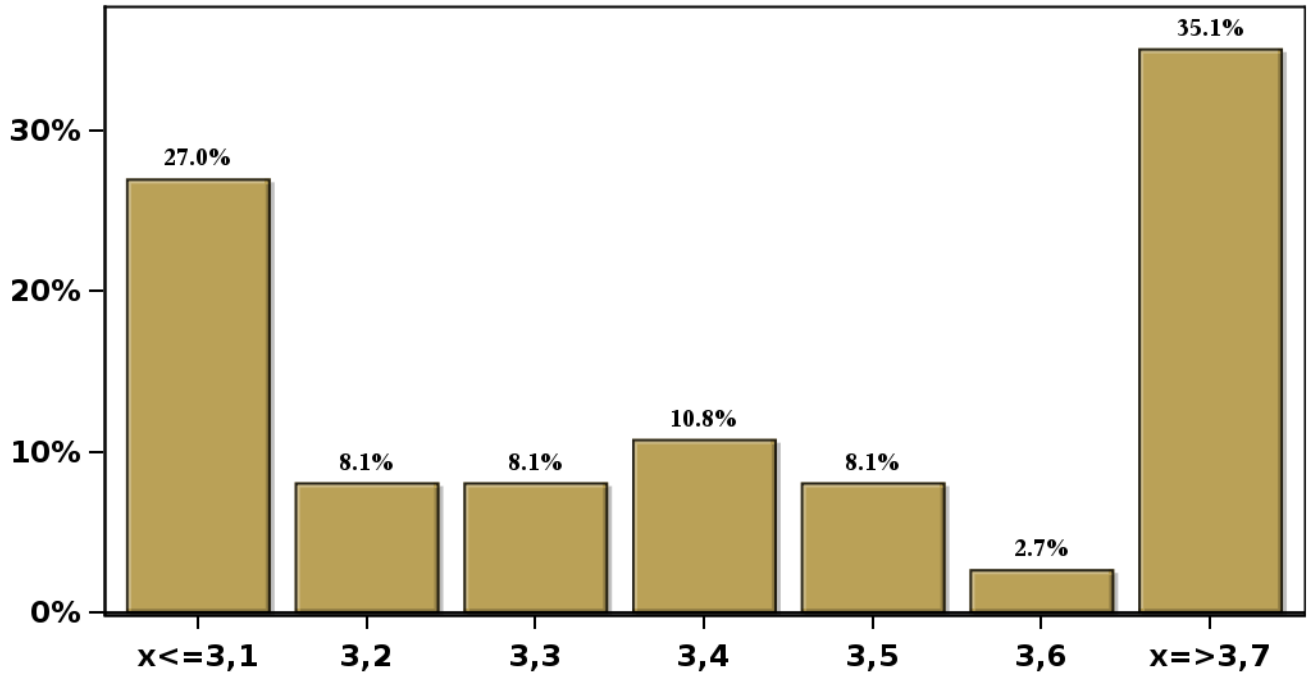


[Click to view summary table](#)

**Monthly Survey On Expectations April 2026**  
**Inflation without volatiles in eleven months (12-month change)**

**Answers: 37 Median: 3,4%**

**% Obs.**

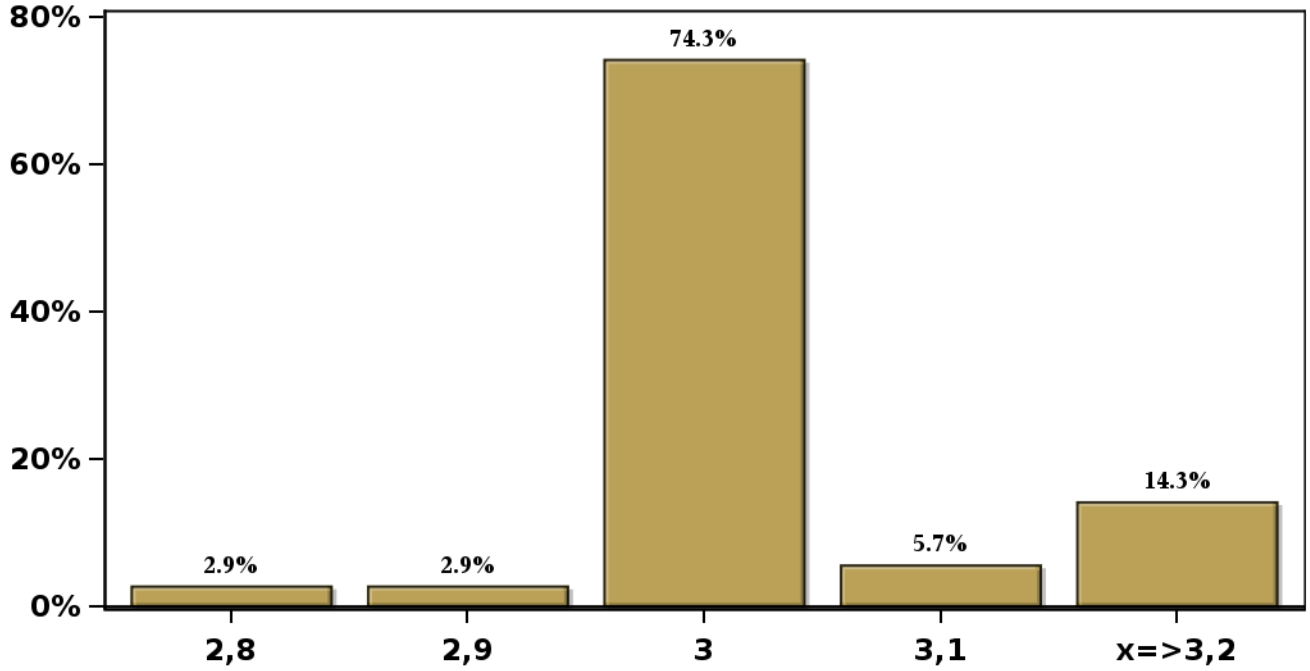


[Click to view summary table](#)

**Monthly Survey On Expectations April 2026**  
**Inflation without volatiles in twenty three months (12-month change)**

**Answers: 35 Median: 3%**

**% Obs.**

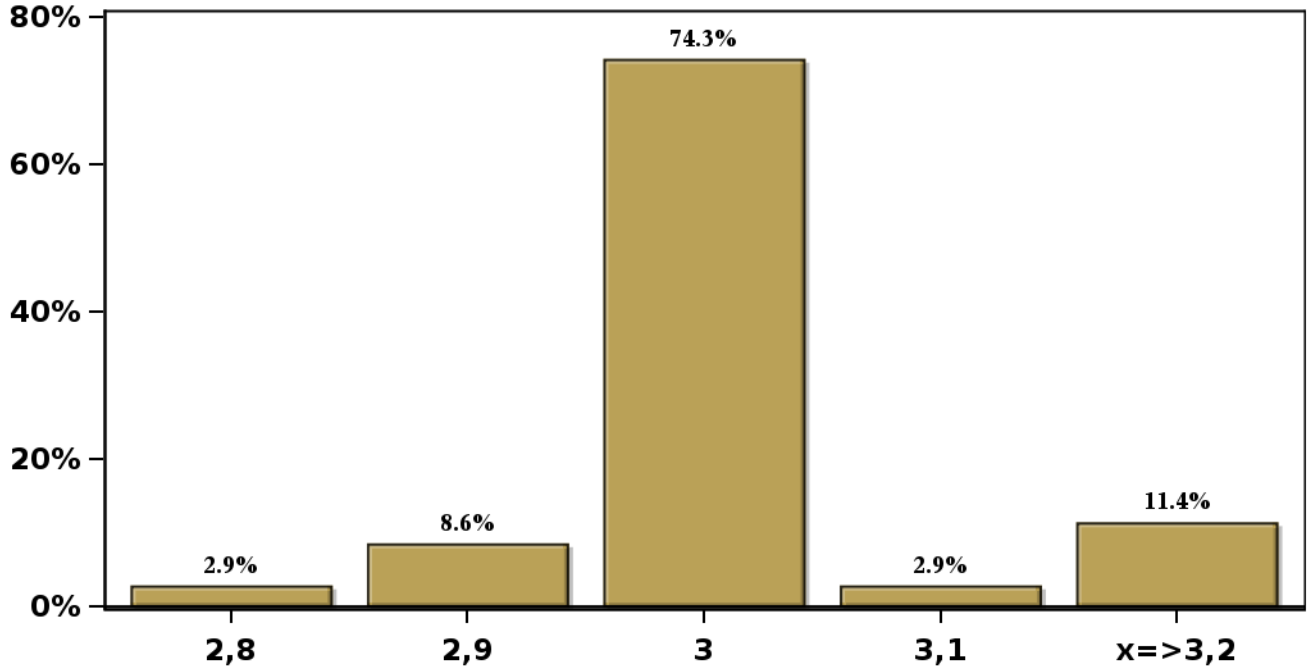


[Click to view summary table](#)

**Monthly Survey On Expectations April 2026**  
**Inflation without volatiles in thirty five months (12-month change)**

**Answers: 35 Median: 3%**

**% Obs.**

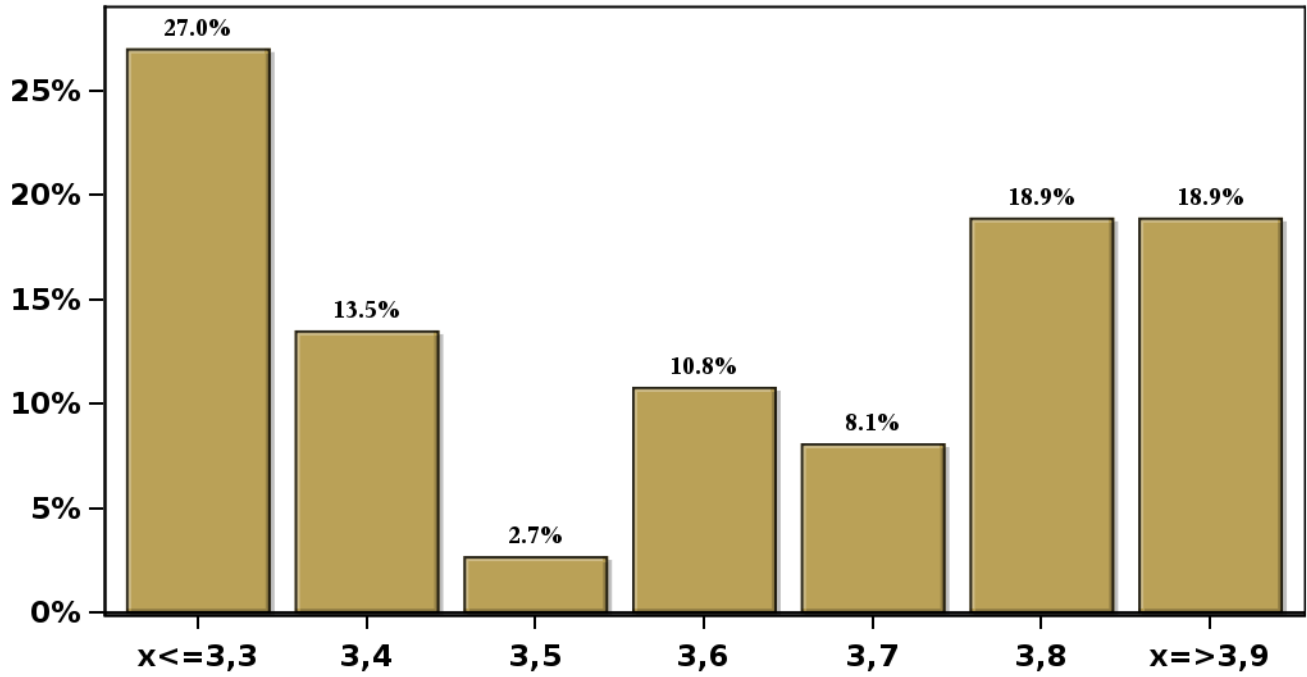


[Click to view summary table](#)

**Monthly Survey On Expectations April 2026**  
**Inflation without volatiles december 2026 ( 12-month change )**

**Answers: 37 Median: 3,6%**

**% Obs.**

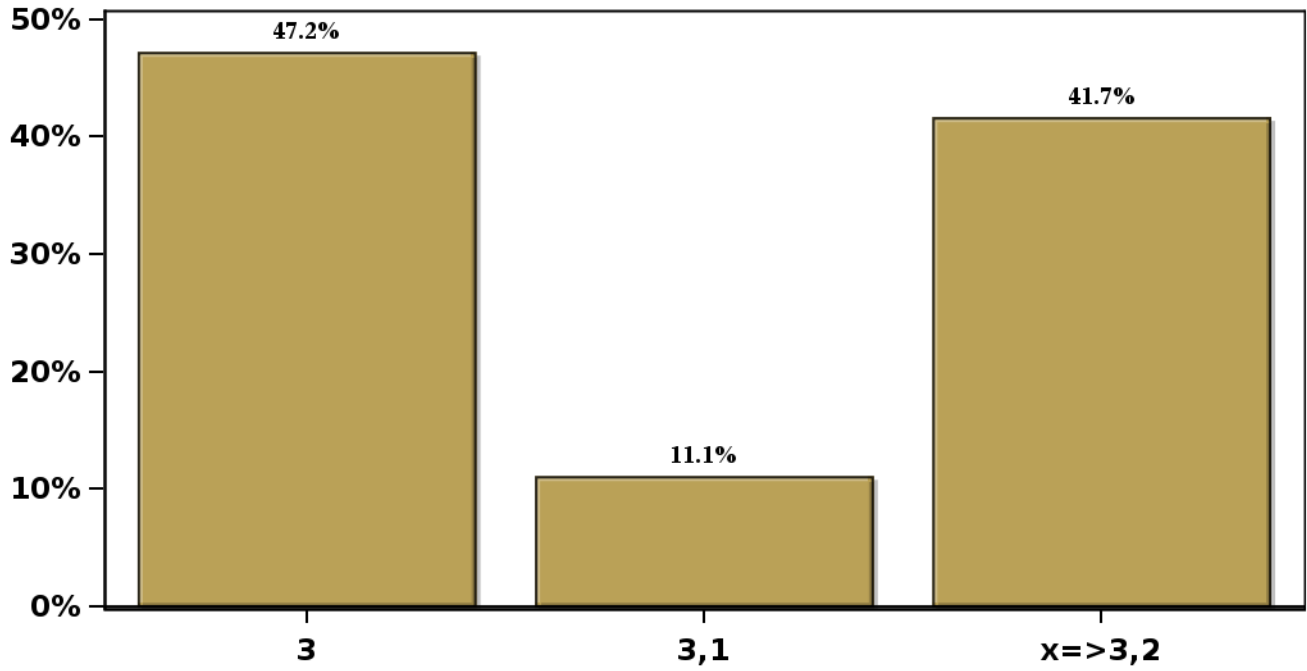


[Click to view summary table](#)

**Monthly Survey On Expectations April 2026**  
**Inflation without volatiles december 2027 ( 12-month change )**

**Answers: 36 Median: 3,1%**

**% Obs.**

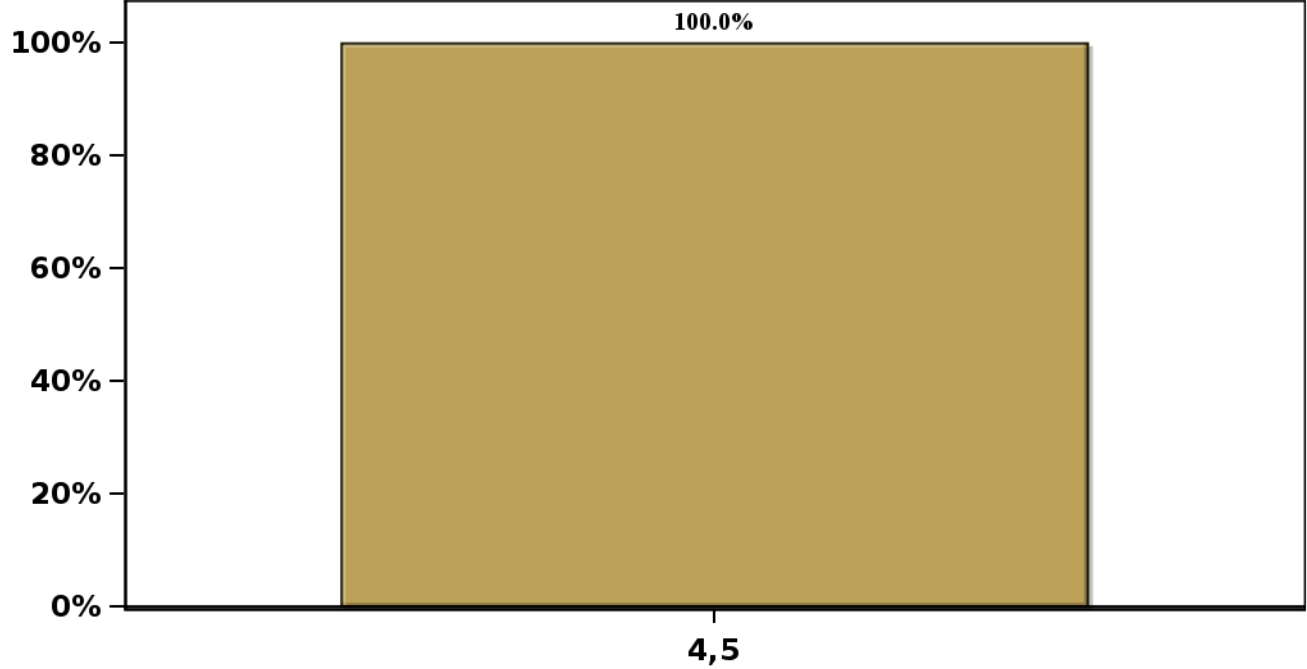


[Click to view summary table](#)

**Monthly Survey On Expectations April 2026  
Monetary Policy rate target following meeting**

**Answers: 49 Median: 4,5%**

**% Obs.**

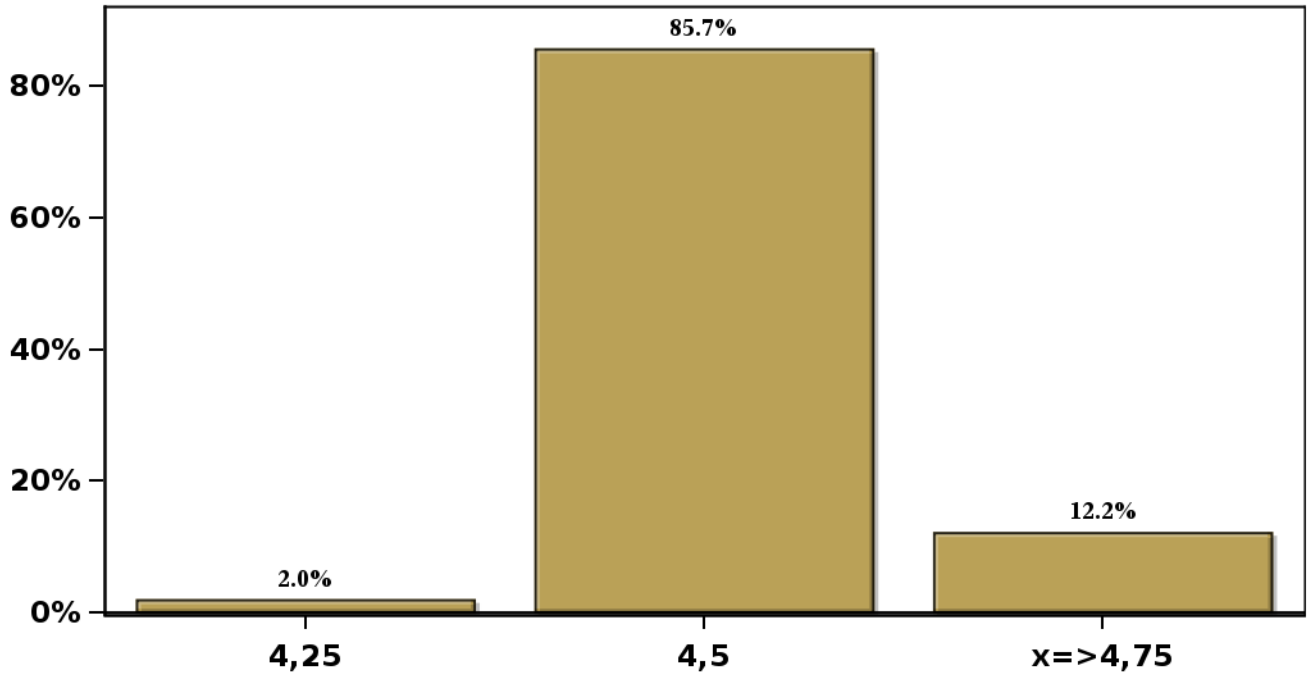


[Click to view summary table](#)

**Monthly Survey On Expectations April 2026**  
**Monetary Policy rate target second following meeting**

**Answers: 49 Median: 4,5%**

**% Obs.**



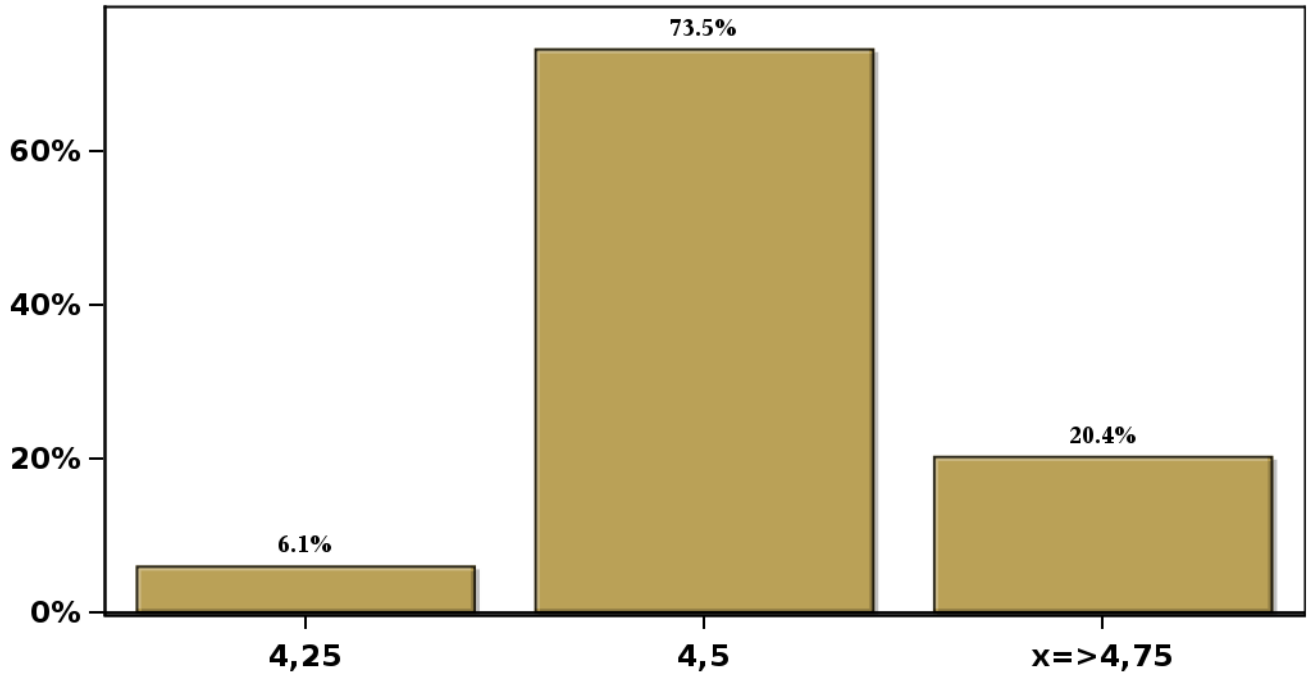
[Click to view summary table](#)

# Monthly Survey On Expectations April 2026

## Monetary Policy rate target In five months

Answers: 49 Median: 4,5%

% Obs.



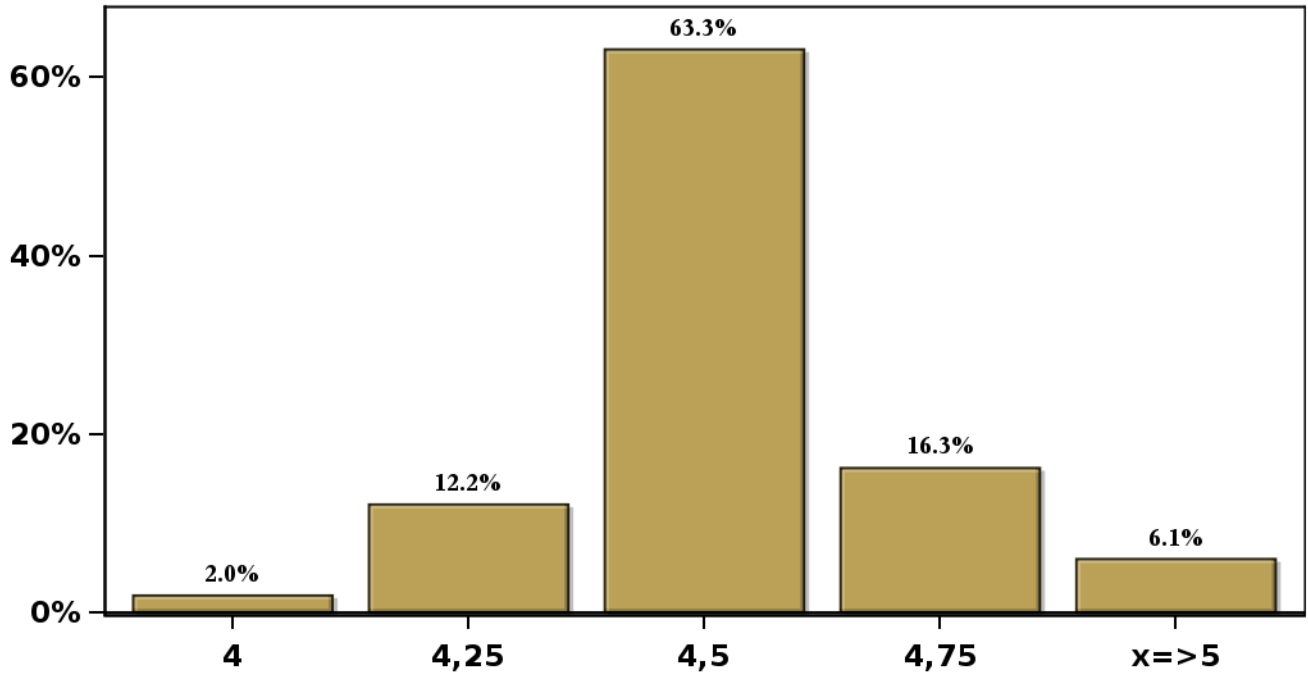
[Click to view summary table](#)

# Monthly Survey On Expectations April 2026

## Monetary Policy rate target december 2026

Answers: 49 Median: 4,5%

% Obs.

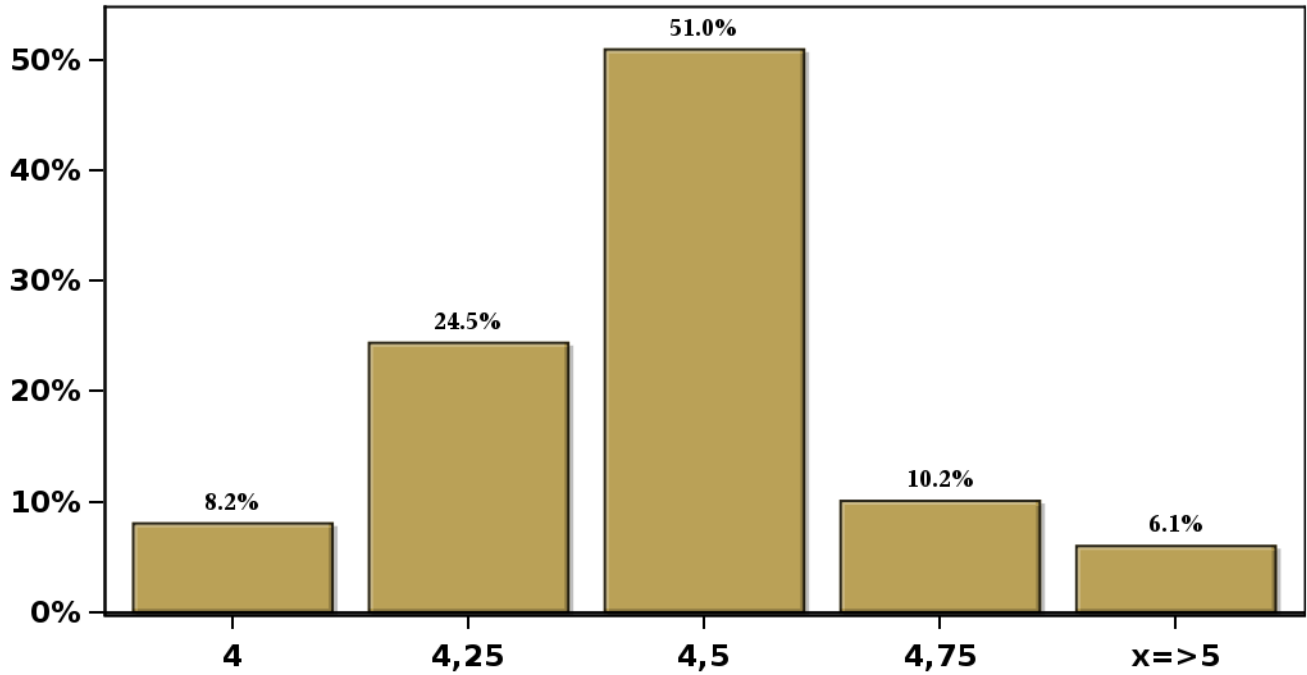


[Click to view summary table](#)

**Monthly Survey On Expectations April 2026  
Monetary Policy rate target in eleven months**

**Answers: 49 Median: 4,5%**

**% Obs.**

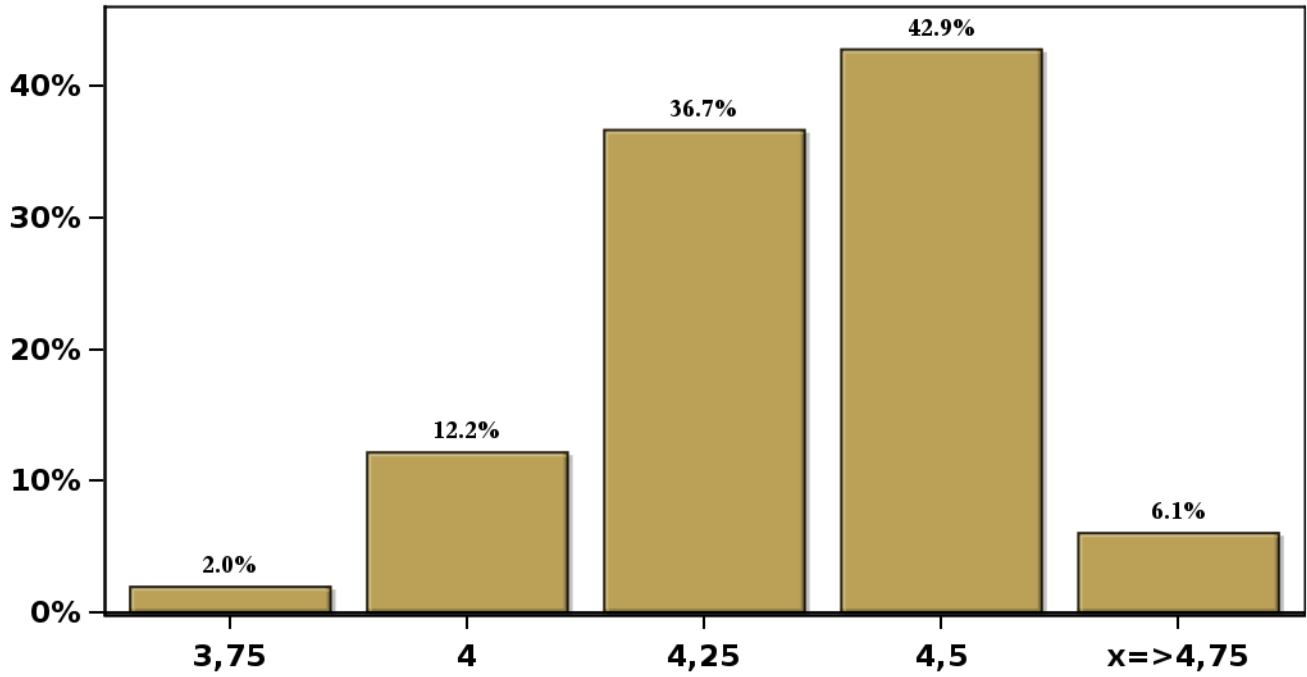


[Click to view summary table](#)

**Monthly Survey On Expectations April 2026**  
**Monetary Policy rate target in seventeen months**

**Answers: 49 Median: 4,25%**

**% Obs.**

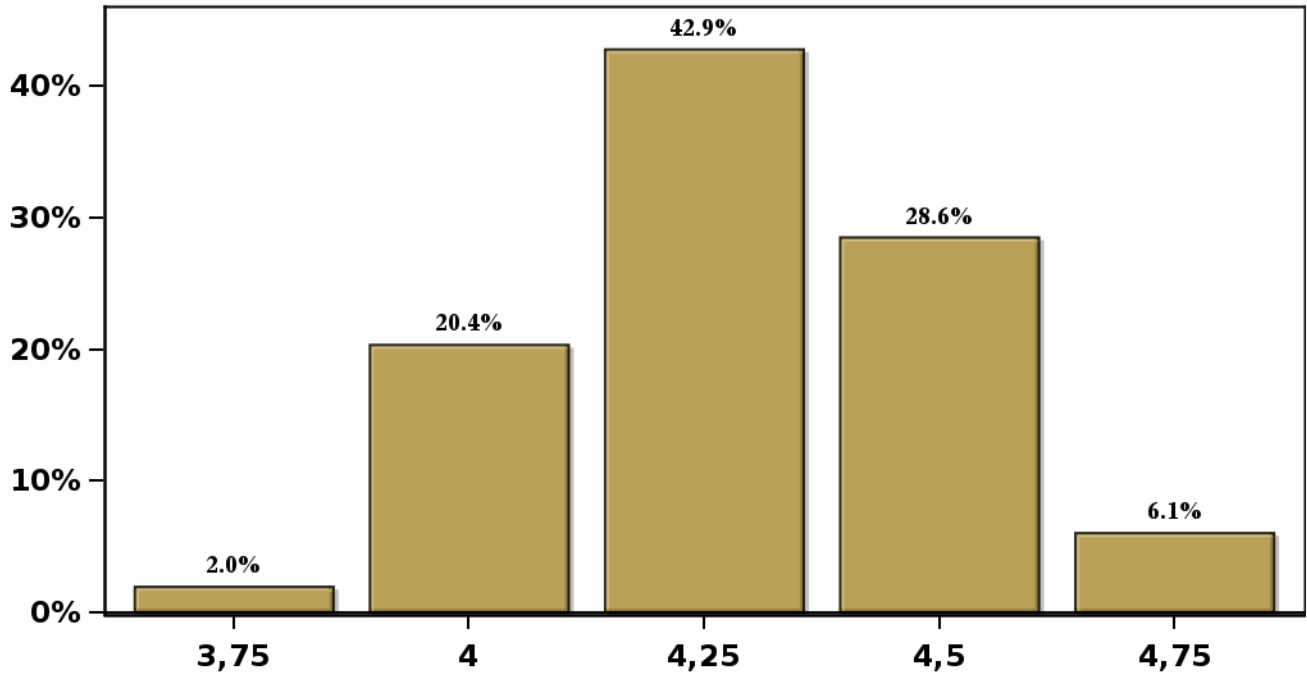


[Click to view summary table](#)

**Monthly Survey On Expectations April 2026**  
**Monetary Policy rate target in twenty three months**

**Answers: 49 Median: 4,25%**

**% Obs.**

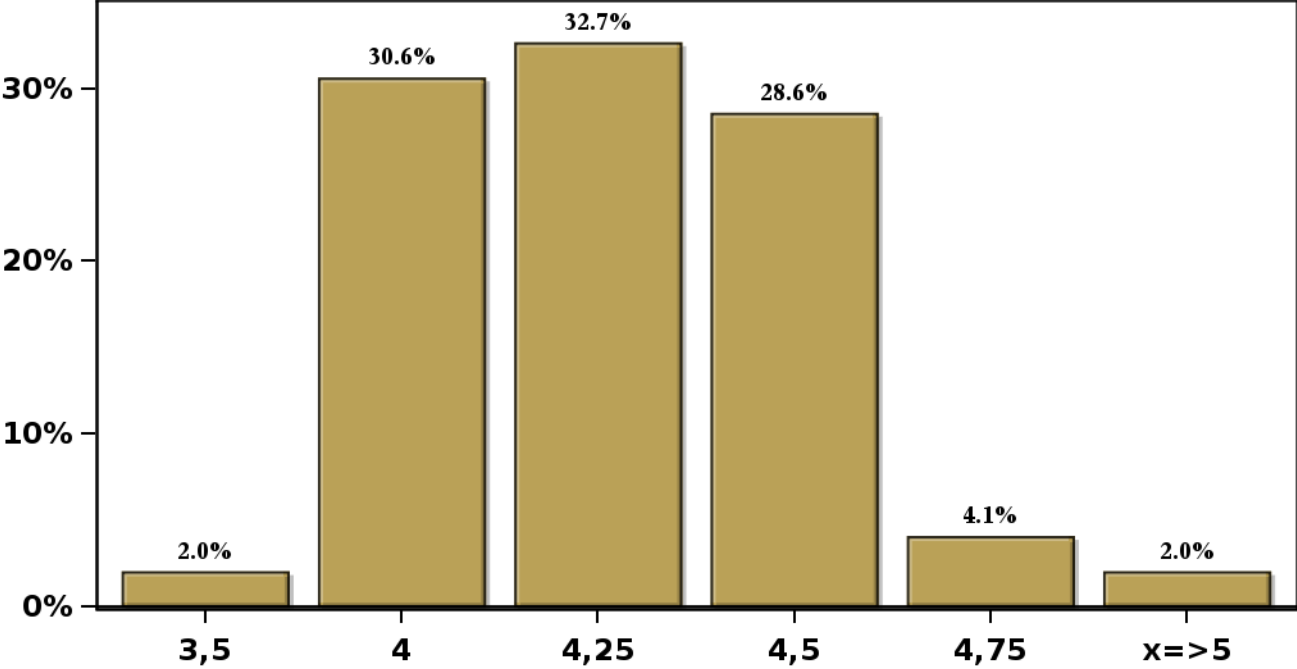


[Click to view summary table](#)

**Monthly Survey On Expectations April 2026**  
**Monetary Policy rate target in thirty five months**

**Answers: 49 Median: 4,25%**

**% Obs.**

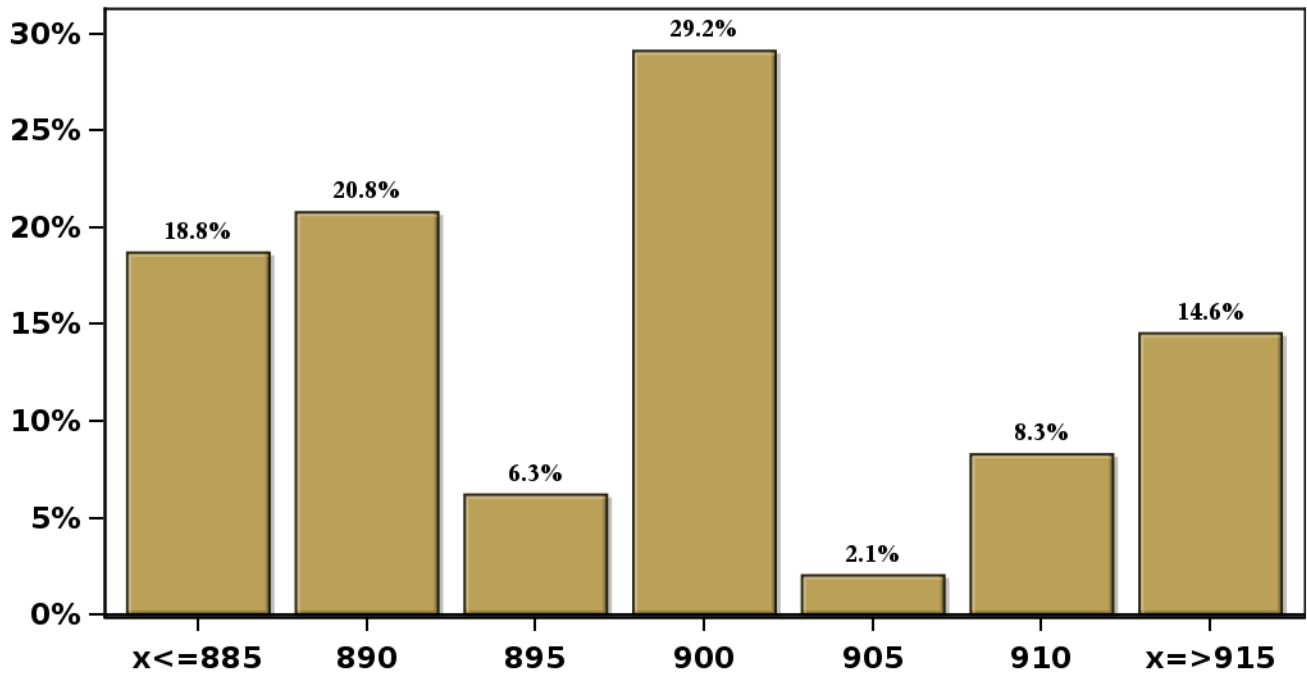


[Click to view summary table](#)

**Monthly Survey On Expectations April 2026**  
**Exchange Rate in two months (CH \$ per US\$)**

**Answers: 48 Median: \$900**

**% Obs.**

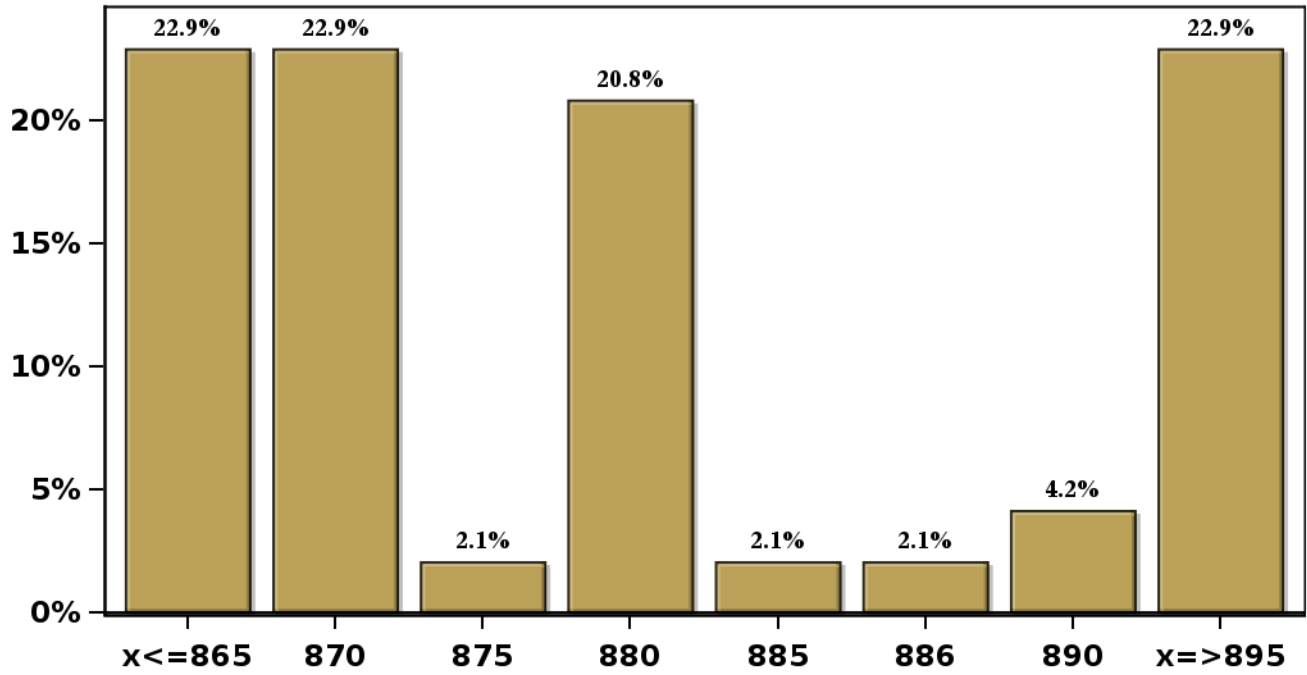


[Click to view summary table](#)

**Monthly Survey On Expectations April 2026**  
**Exchange Rate in eleven months (CH \$ per US\$)**

**Answers: 48 Median: \$880**

**% Obs.**

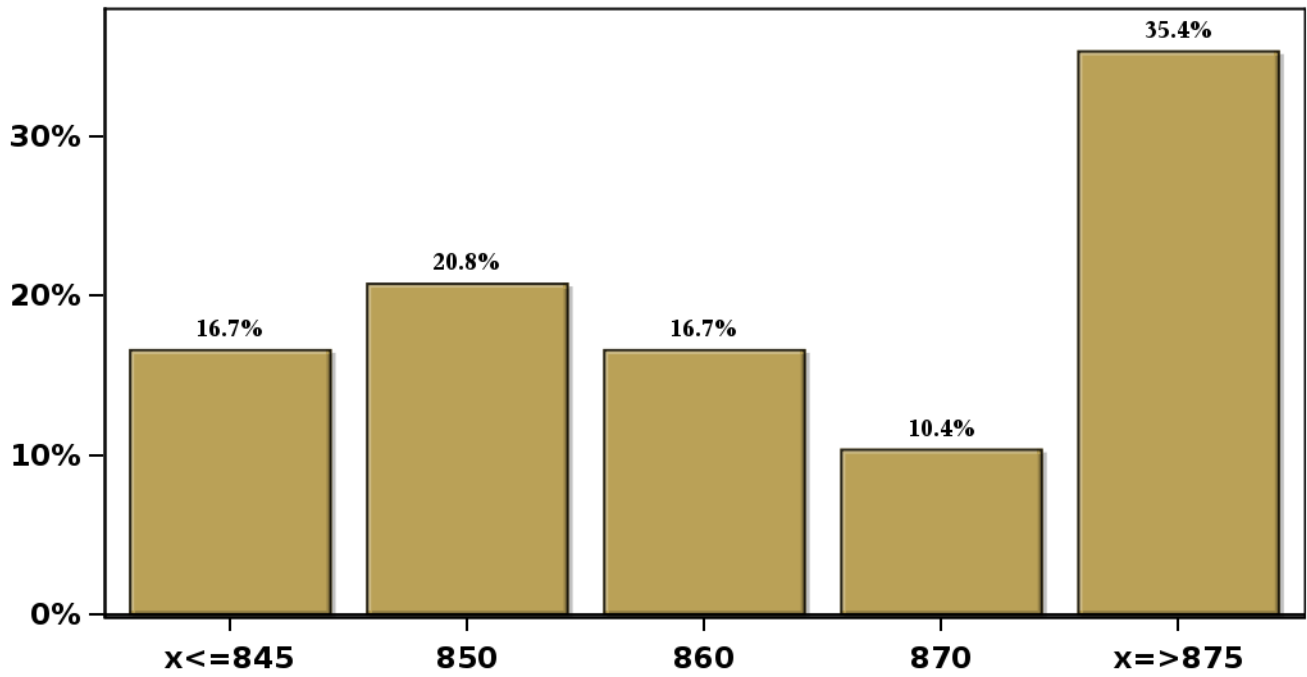


[Click to view summary table](#)

**Monthly Survey On Expectations April 2026**  
**Exchange Rate in twenty three months forward (CH \$ per US\$)**

**Answers: 48 Median: \$860**

**% Obs.**

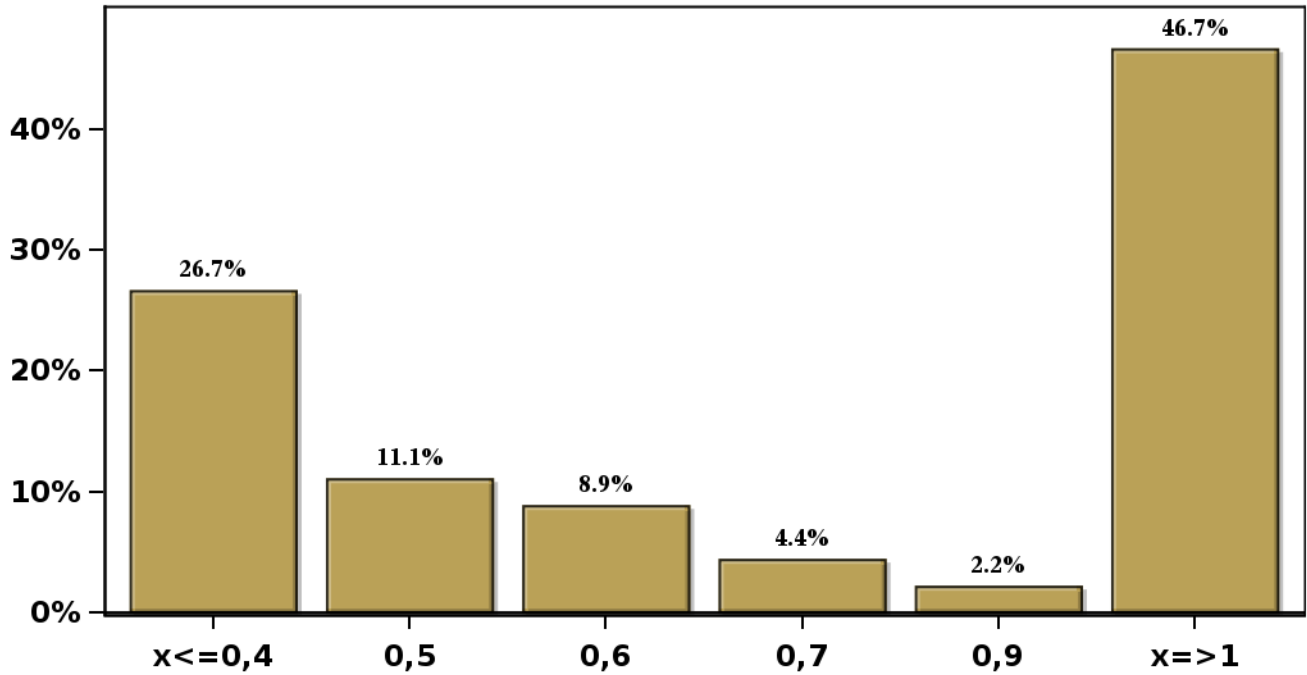


[Click to view summary table](#)

**Monthly Survey On Expectations April 2026**  
**IMACEC (Monthly Activity Index) one month ago**

**Answers: 45 Median: 0,7%**

**% Obs.**

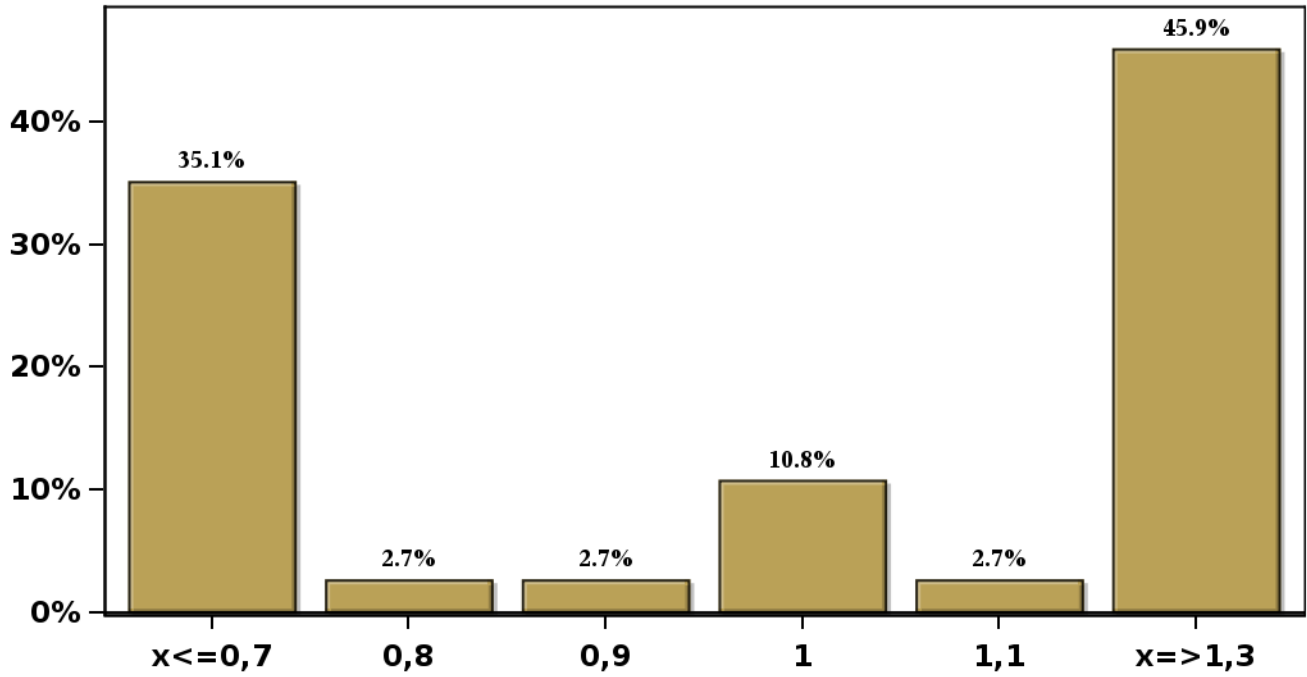


[Click to view summary table](#)

**Monthly Survey On Expectations April 2026**  
**IMACEC No Mining (Monthly Activity Index) one month ago**

**Answers: 37 Median: 1%**

**% Obs.**



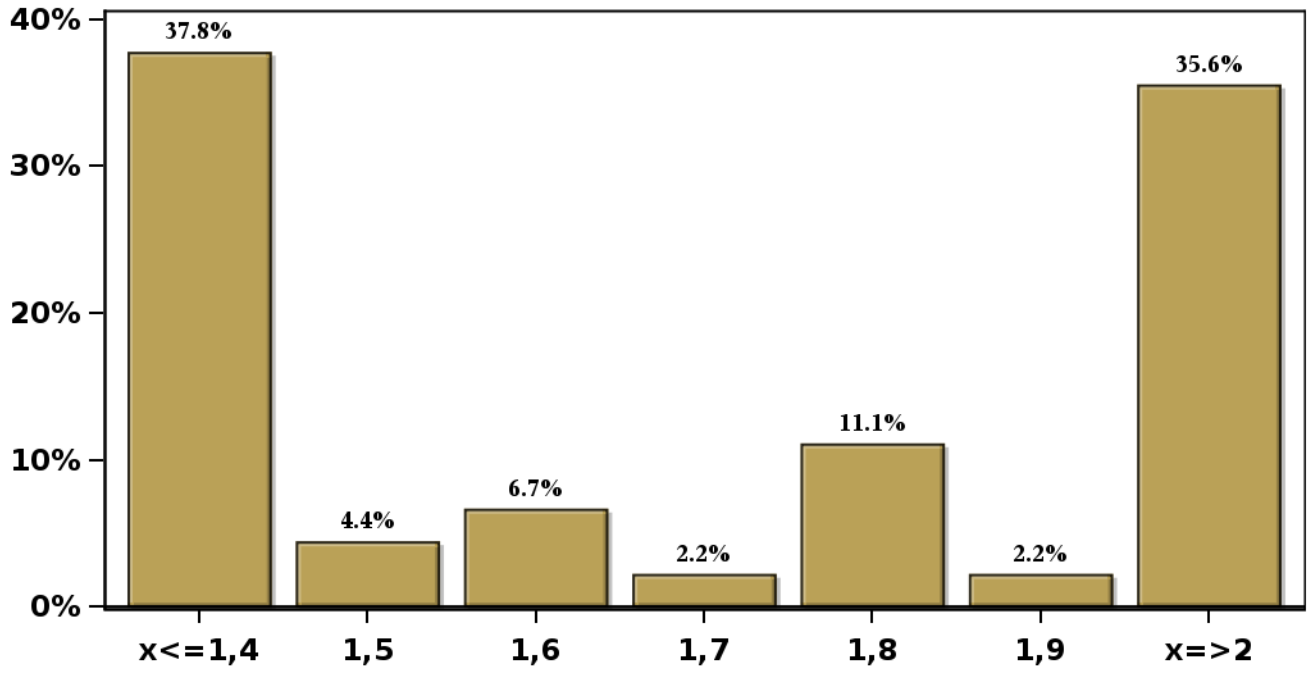
[Click to view summary table](#)

# Monthly Survey On Expectations April 2026

## GDP within calendar quarter of the survey

Answers: 45 Median: 1,7%

% Obs.



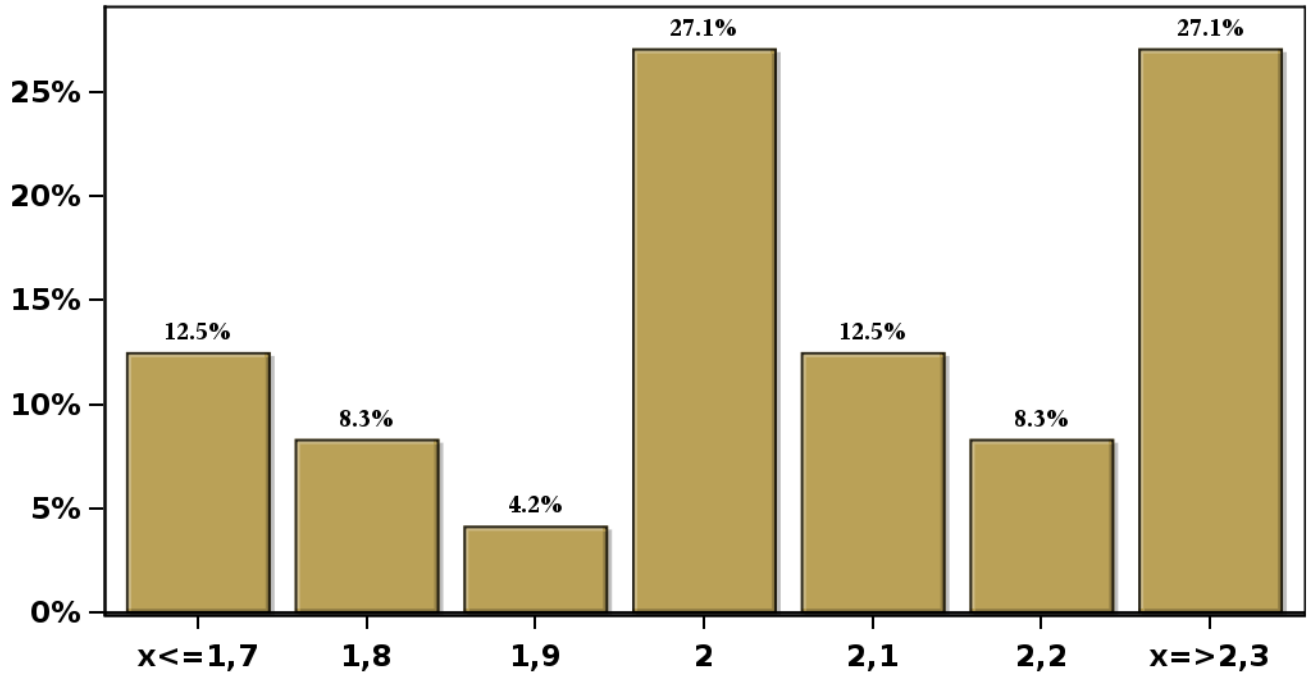
[Click to view summary table](#)

# Monthly Survey On Expectations April 2026

## GDP year 2026 (12-month change)

Answers: 48 Median: 2%

% Obs.



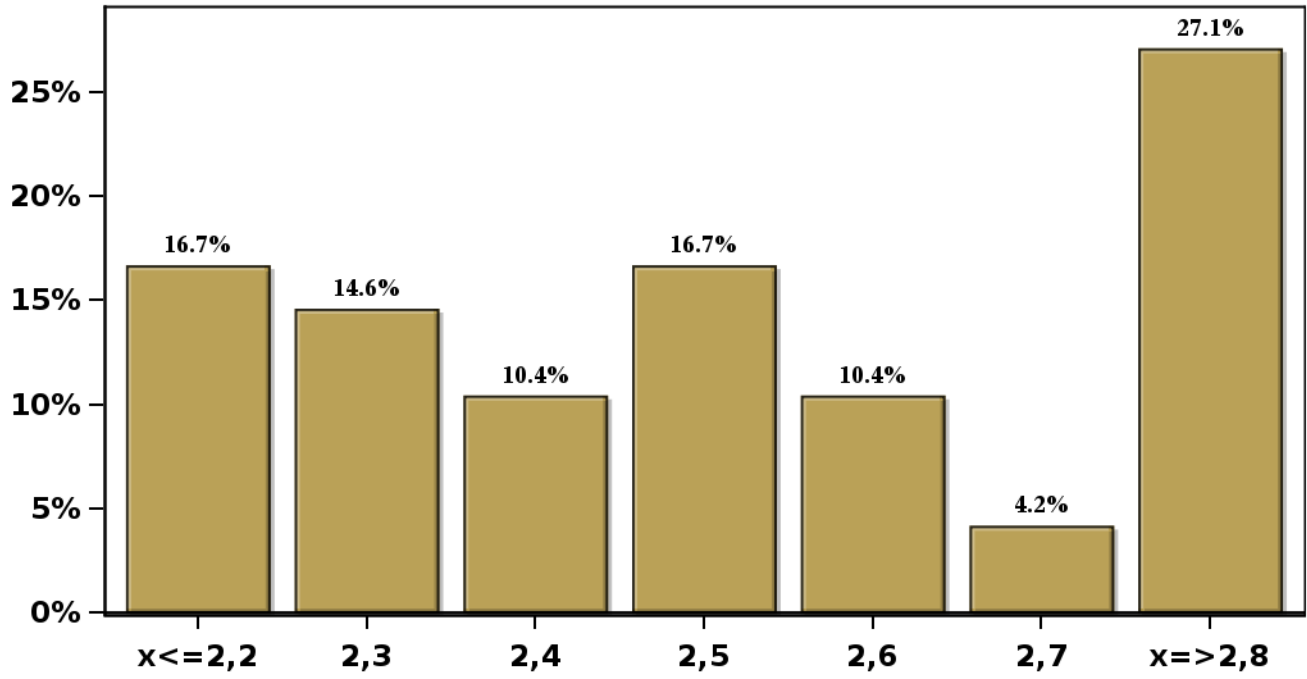
[Click to view summary table](#)

### Monthly Survey On Expectations April 2026

GDP year 2027 (12-month change)

Answers: 48 Median: 2,5%

% Obs.



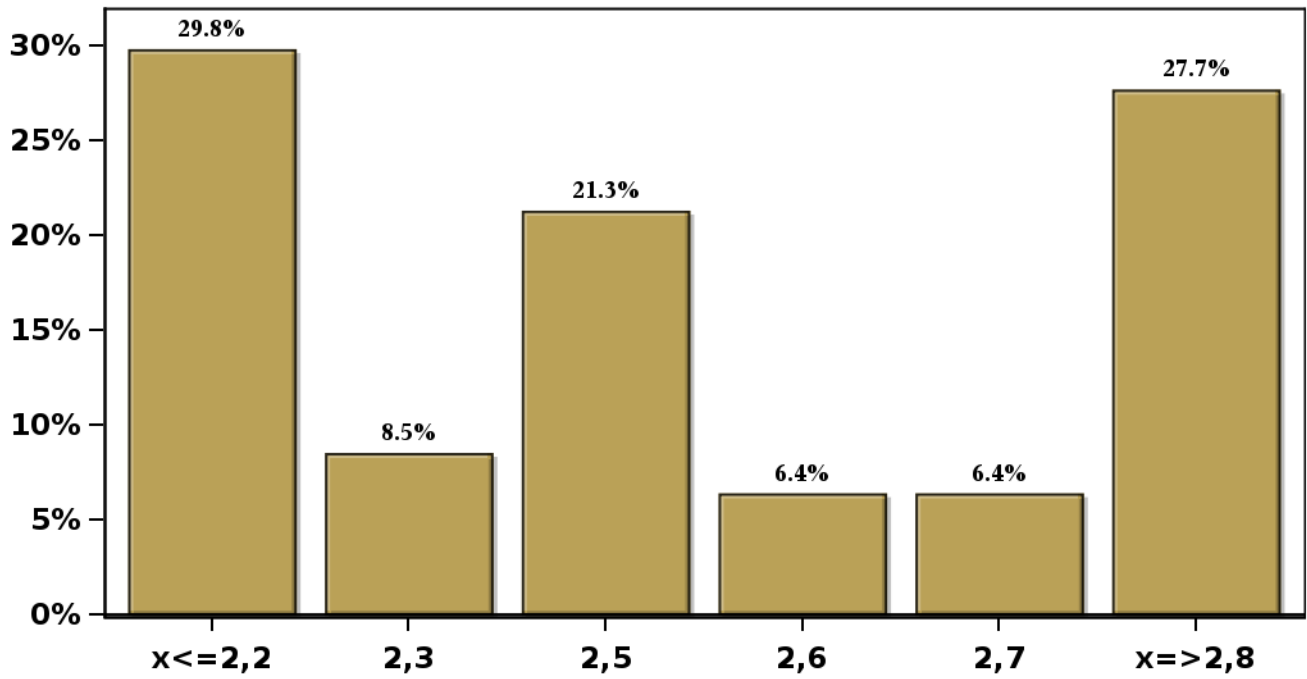
[Click to view summary table](#)

### Monthly Survey On Expectations April 2026

GDP year 2028 (12-month change)

Answers: 47 Median: 2,5%

% Obs.

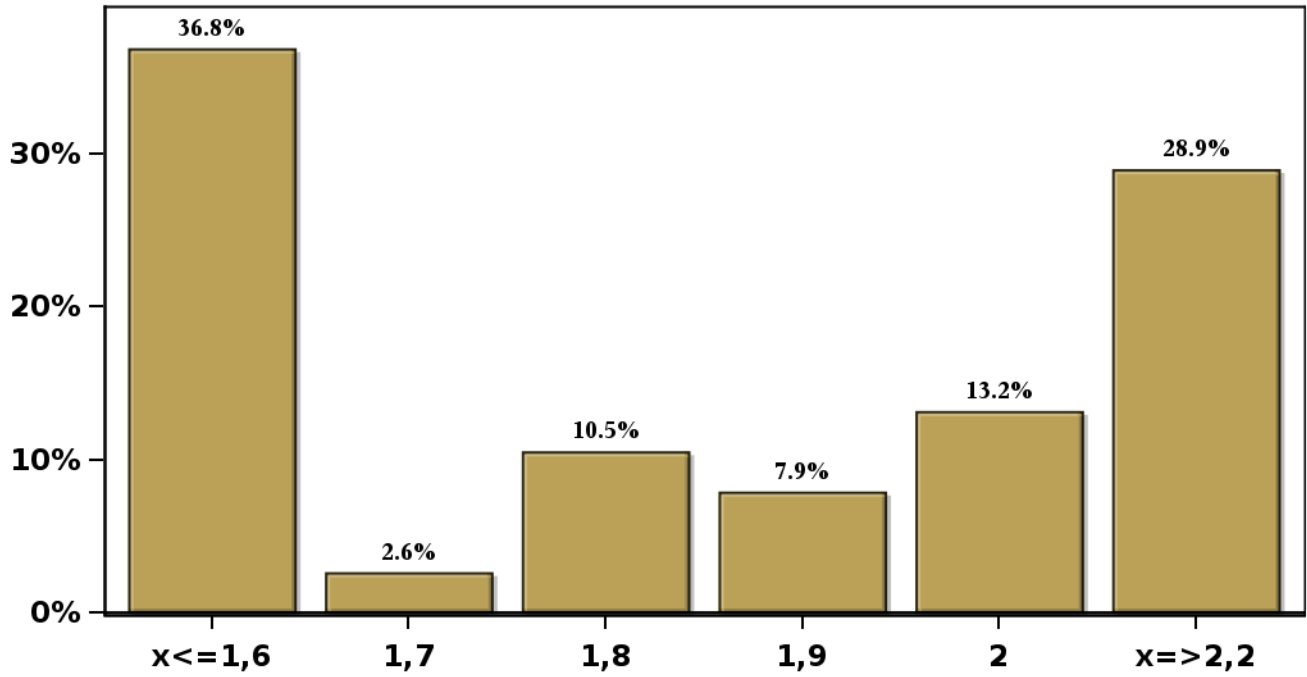


[Click to view summary table](#)

**Monthly Survey On Expectations April 2026**  
**GDP No Mining within calendar quarter of the survey**

**Answers: 38 Median: 1,9%**

**% Obs.**

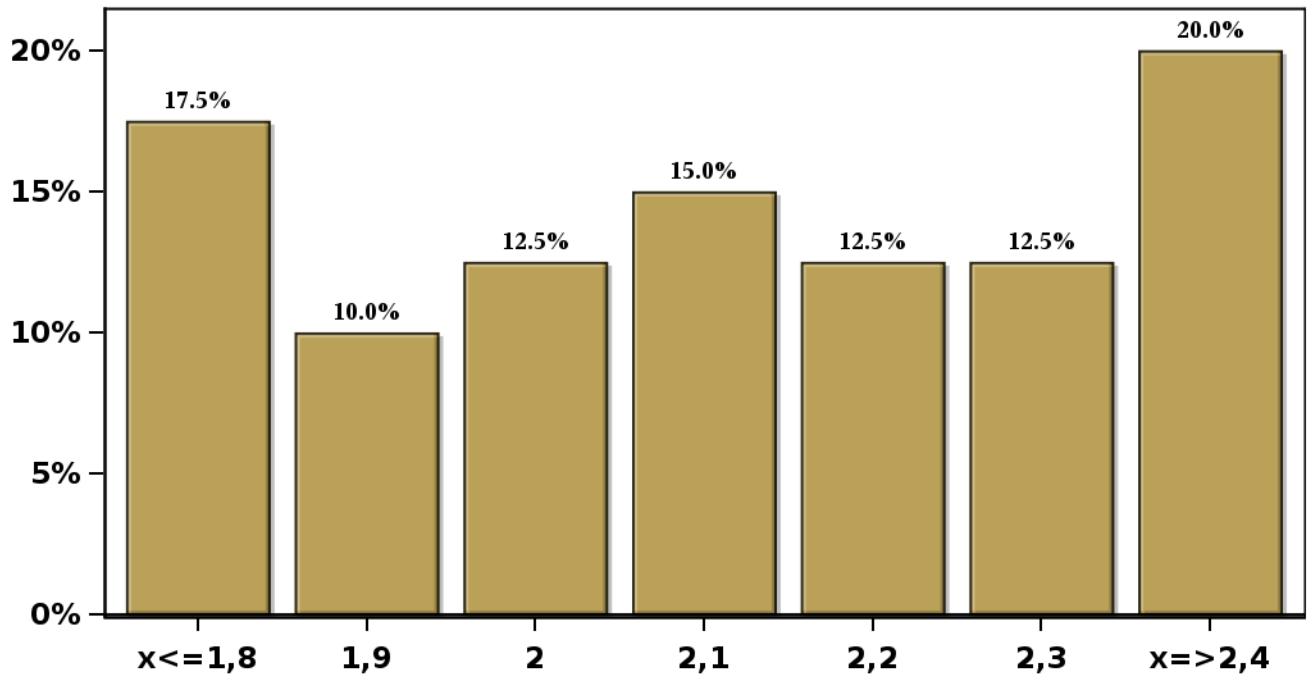


[Click to view summary table](#)

**Monthly Survey On Expectations April 2026  
GDP No Mining year 2026 (12-month change)**

**Answers: 40 Median: 2,1%**

**% Obs.**

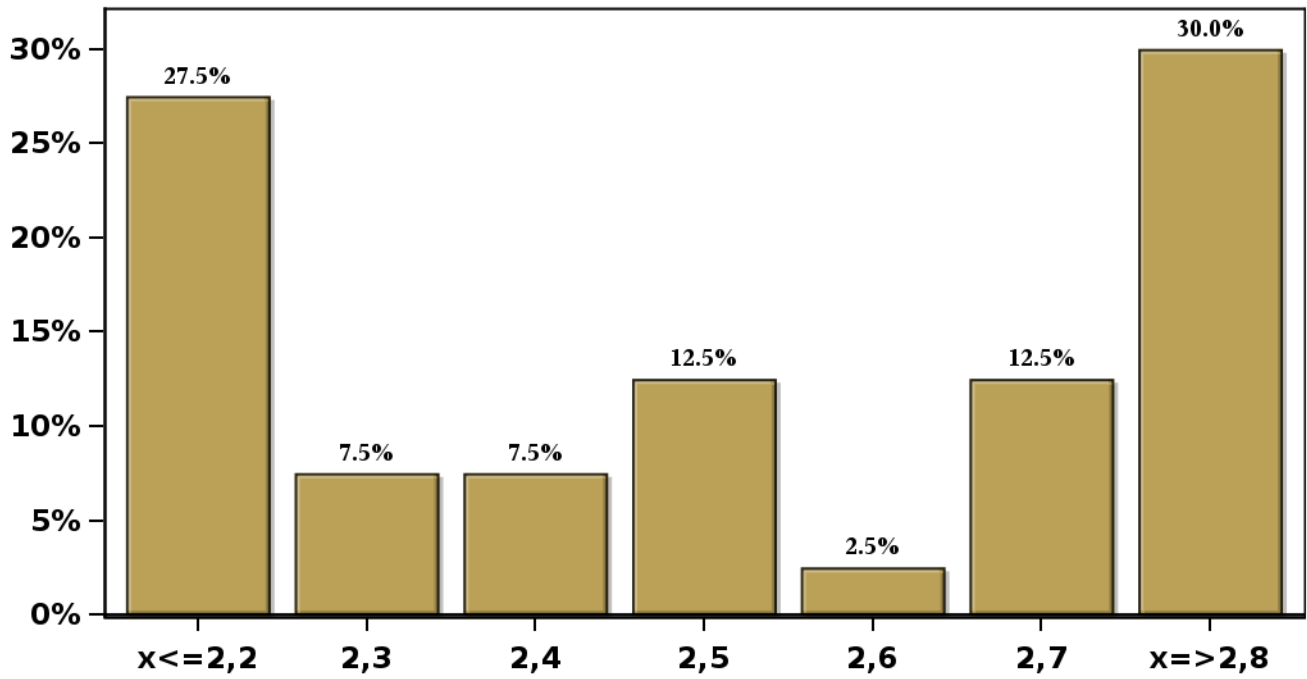


[Click to view summary table](#)

**Monthly Survey On Expectations April 2026  
GDP No Mining year 2027 (12-month change)**

**Answers: 40 Median: 2,5%**

**% Obs.**

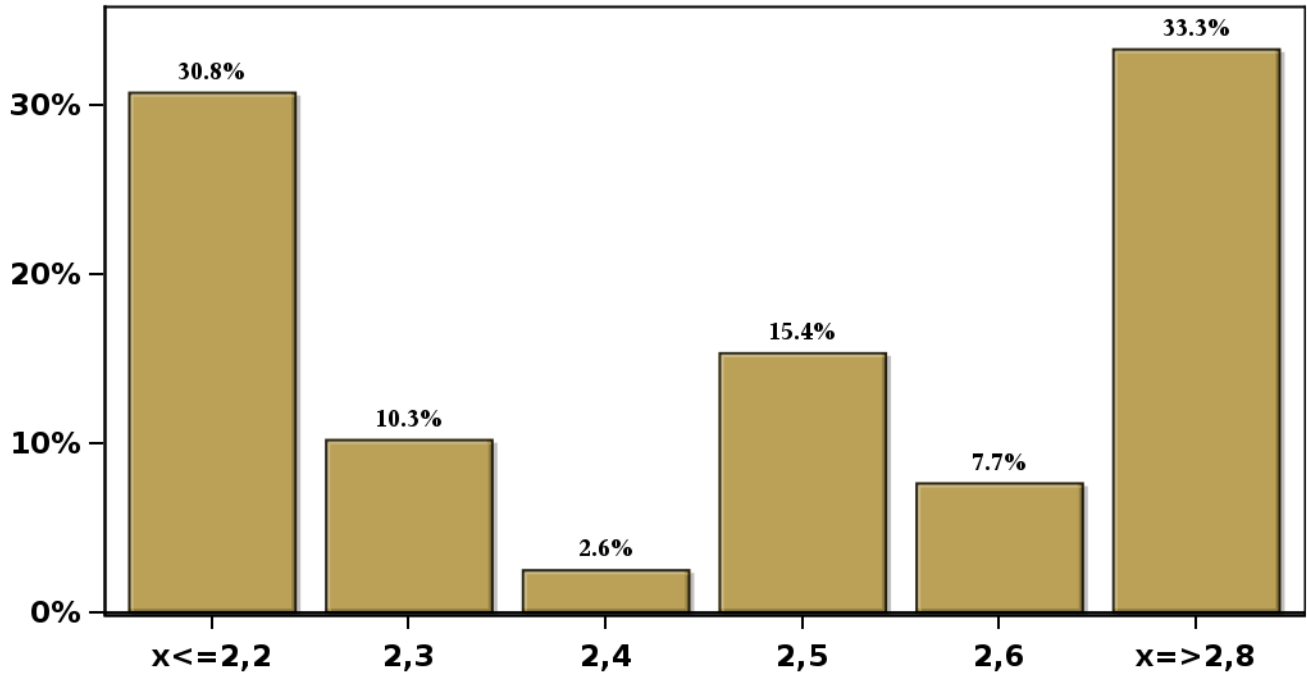


[Click to view summary table](#)

**Monthly Survey On Expectations April 2026  
GDP No Mining year 2028 (12-month change)**

**Answers: 39 Median: 2,5%**

**% Obs.**

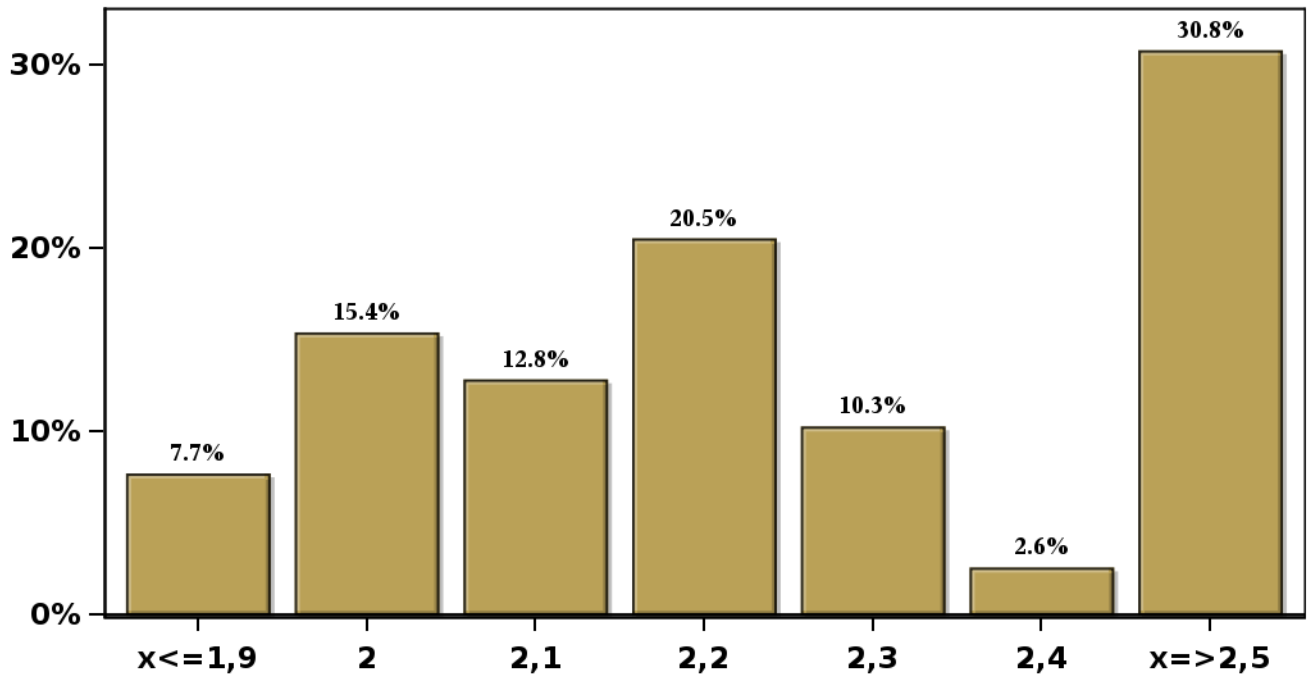


[Click to view summary table](#)

**Monthly Survey On Expectations April 2026**  
**HFC including NPO year 2026 (12-month change)**

**Answers: 39 Median: 2,2%**

**% Obs.**

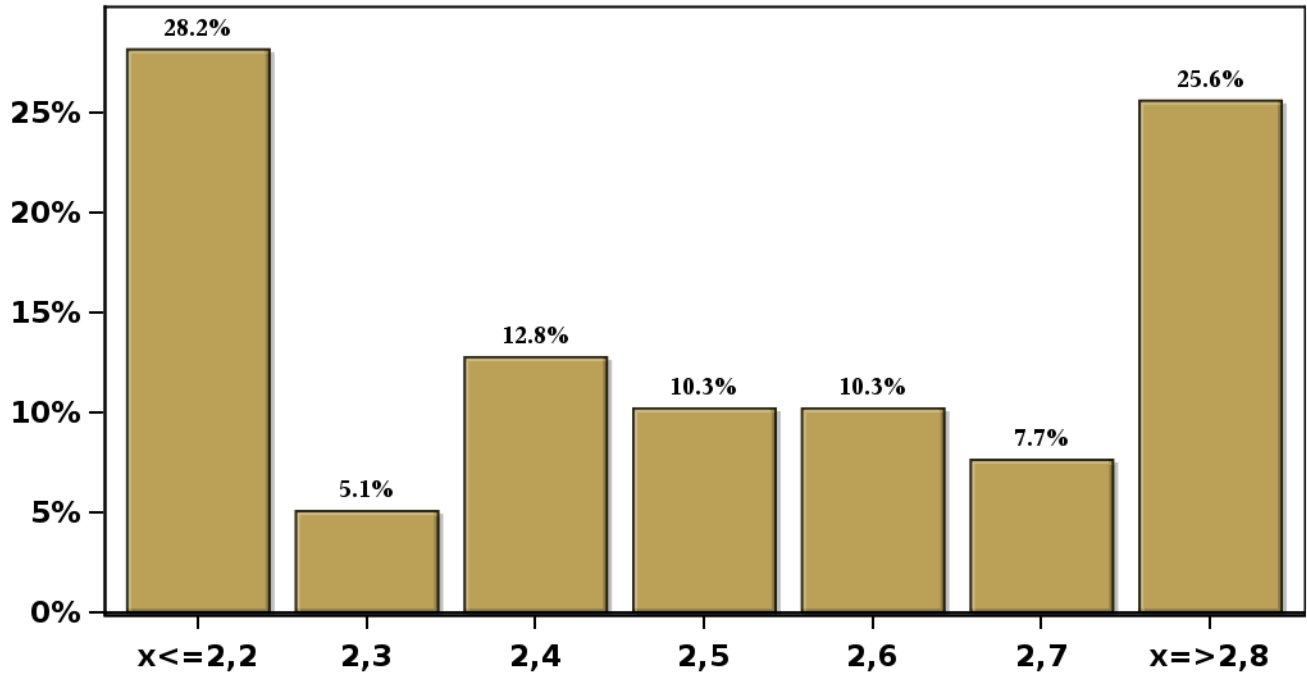


[Click to view summary table](#)

**Monthly Survey On Expectations April 2026**  
**HFC including NPO year 2027 (12-month change)**

**Answers: 39 Median: 2,5%**

**% Obs.**



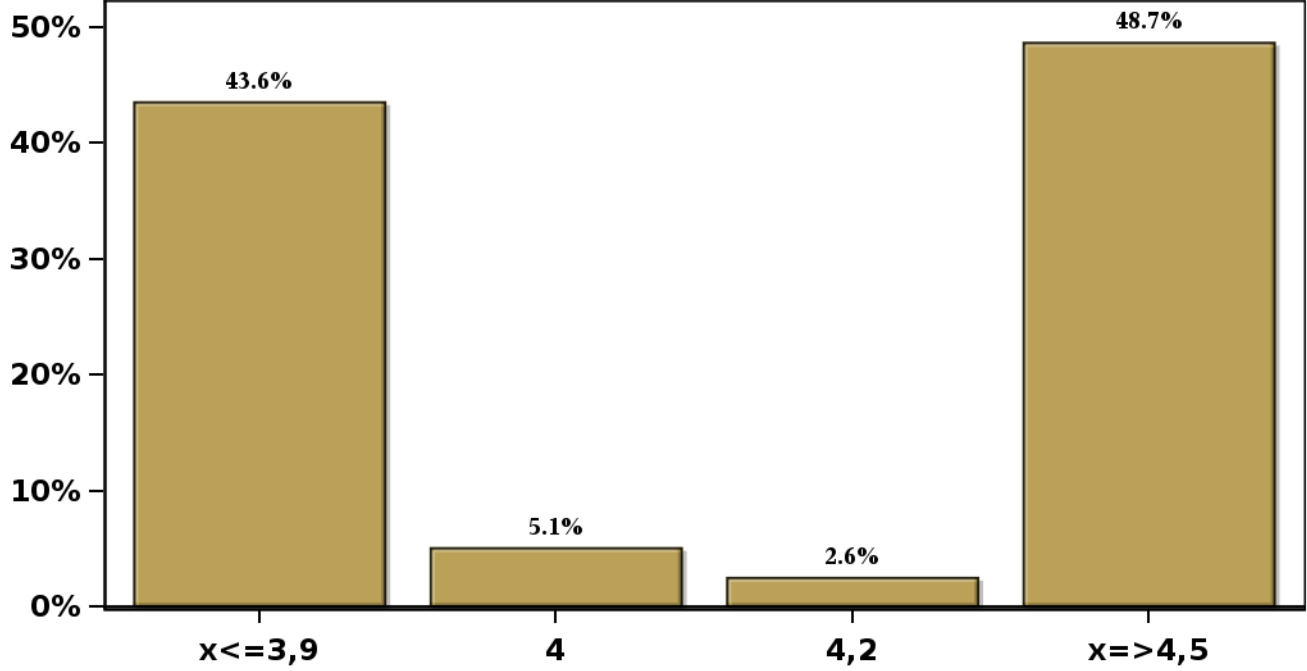
[Click to view summary table](#)

### Monthly Survey On Expectations April 2026

GFCF year 2026 (12-month change)

Answers: 39 Median: 4,2%

% Obs.

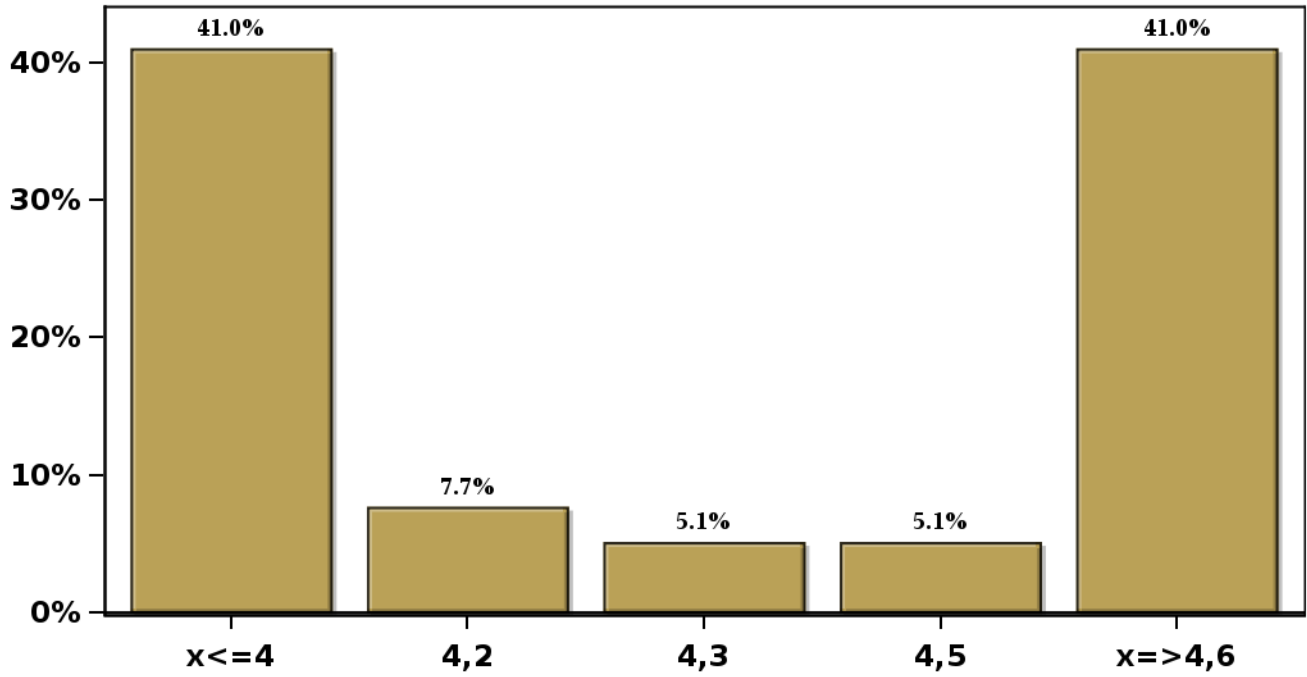


[Click to view summary table](#)

**Monthly Survey On Expectations April 2026**  
**GFCF year 2027 (12-month change)**

**Answers: 39 Median: 4,3%**

**% Obs.**



[Click to view summary table](#)