

MONTHLY SURVEY ON EXPECTATIONS February 2023

Sent on: 3 February 2023

Deadline for responses: 9 February 2023

Variable	Median	Decile 1	Decile 9	Answers	Graph
01. Inflation (% change)					
Current month (monthly change)	0,40	0,20	0,60	42	Graph1
Next month (monthly change)	0,80	0,50	1,00	42	Graph2
In eleven months (12-month change)	5,00	4,00	6,20	42	Graph3
In twenty three months (12-month change)	3,20	3,00	4,00	42	Graph4
In thirty five months (12-month change)	3,00	3,00	3,50	43	Graph5
December 2023 (12-month change)	5,30	4,20	6,30	43	Graph6
December 2024 (12-month change)	3,30	3,00	4,00	43	Graph7
02. Monetary Policy rate target (%) (*)					
Following meeting	11,25	10,75	11,25	43	Graph8
Second following meeting	11,00	10,25	11,25	43	Graph9
In five months	10,00	8,75	10,75	43	Graph10
December 2023	7,50	6,50	8,75	43	Graph11
In eleven months	7,00	6,00	8,50	42	Graph12
In seventeen months	5,50	4,00	7,00	43	Graph13
In twenty three months	4,75	4,00	5,75	42	Graph14
In thirty five months	4,25	3,50	5,00	41	Graph15
03. 5-Year BCU (%) (*)					
In two months	2,10	1,50	2,50	33	Graph16
In eleven months	2,00	1,30	3,00	32	Graph17
In twenty three months forward	2,00	1,00	2,50	31	Graph18
04. 5-Year BCP (%) (*)					
In two months	5,70	5,00	6,60	33	Graph19
In eleven months	5,50	4,80	6,20	32	Graph20
In twenty three months forward	5,20	4,50	6,00	31	Graph21
05. Exchange Rate (CH \$ per US\$ 1) (*)					
In two months	800,00	785,00	850,00	42	Graph22
In eleven months	800,00	750,00	850,00	42	Graph23
In twenty three months forward	800,00	700,00	850,00	42	Graph24
06. IMACEC (Monthly Activity Index)					
One month ago	-1,50	-3,00	-0,40	37	Graph25
07. IMACEC No Mining (monthly activity index)					
One month ago	-1,80	-3,50	-0,70	30	Graph26
08. GDP (12-month change)					
Within calendar quarter of the survey	-1,70	-3,00	-0,50	35	Graph27
Year 2023	-1,50	-2,00	-0,50	39	Graph28
Year 2024	2,10	1,20	2,50	38	Graph29
Year 2025	2,20	1,50	3,00	37	Graph30
09. GDP No Mining (12-month change)					
Within calendar quarter of the survey	-2,10	-3,70	-0,50	29	Graph31
Year 2023	-1,70	-2,40	-0,80	31	Graph32
Year 2024	2,20	0,90	2,80	30	Graph33
Year 2025	2,30	1,70	3,30	30	Graph34
10. HFC including NPO (12-month change)					
Year 2023	-4,00	-5,50	-1,50	30	Graph35
Year 2024	2,00	1,00	3,00	29	Graph36
11. GFCF (12-month change)					
Year 2023	-4,50	-6,90	-0,60	30	Graph37
Year 2024	1,80	-1,00	4,00	29	Graph38

(*) End of the month.

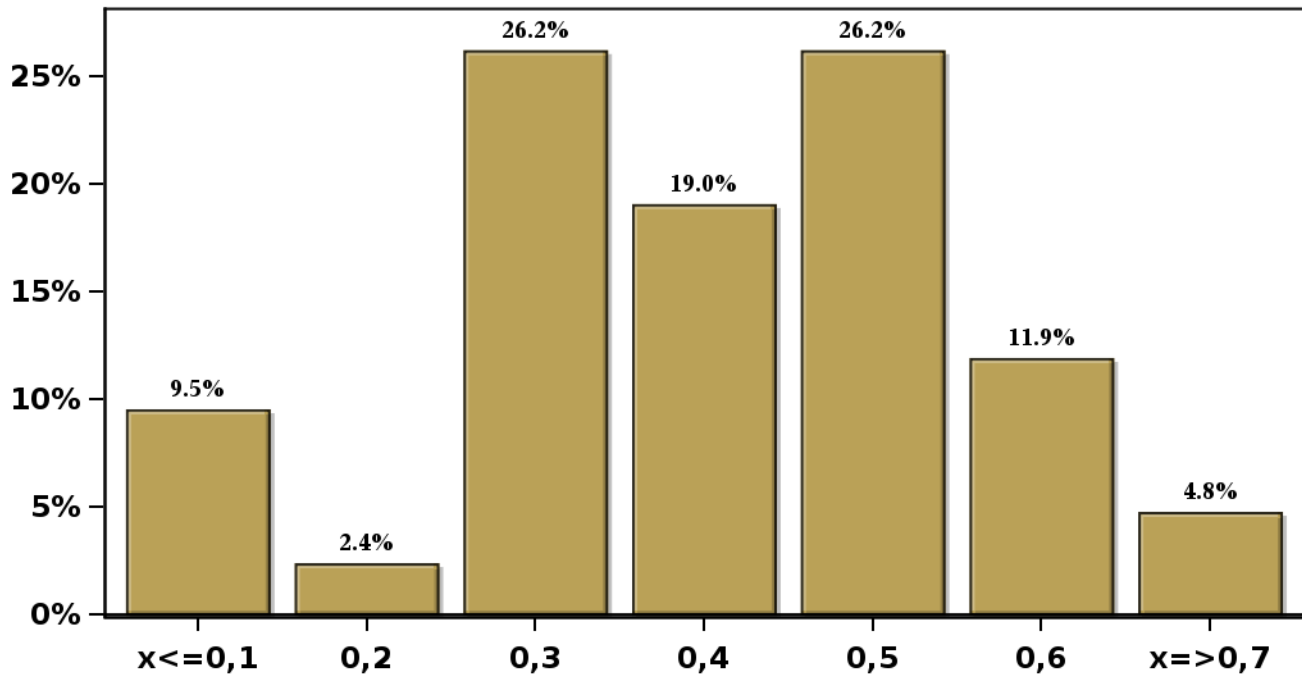
Monthly survey of selected academics, consultants, and executives or advisors of financial institutions and corporations. It is completed the day after the publication of the CPI and it is published the day after its reception, at 8:30 hrs. approximately (www.bcentral.cl, Statistics section, Economic Surveys, Website: <https://www.bcentral.cl/en/areas/economic-surveys>)
The survey period comprises the week prior to publication

Monthly Survey On Expectations February 2023

Inflation current month (monthly change)

Answers: 42 Median: 0,4%

% Obs.



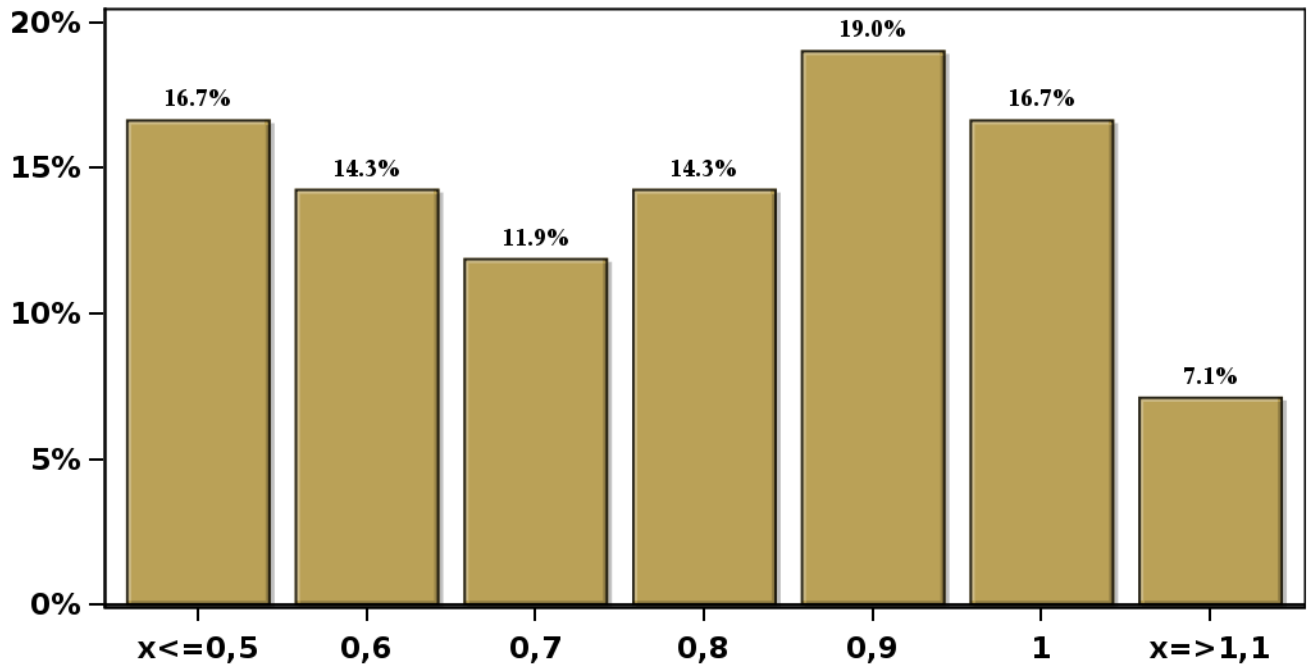
[Click to view summary table](#)

Monthly Survey On Expectations February 2023

Inflation next month (monthly change)

Answers: 42 Median: 0,8%

% Obs.



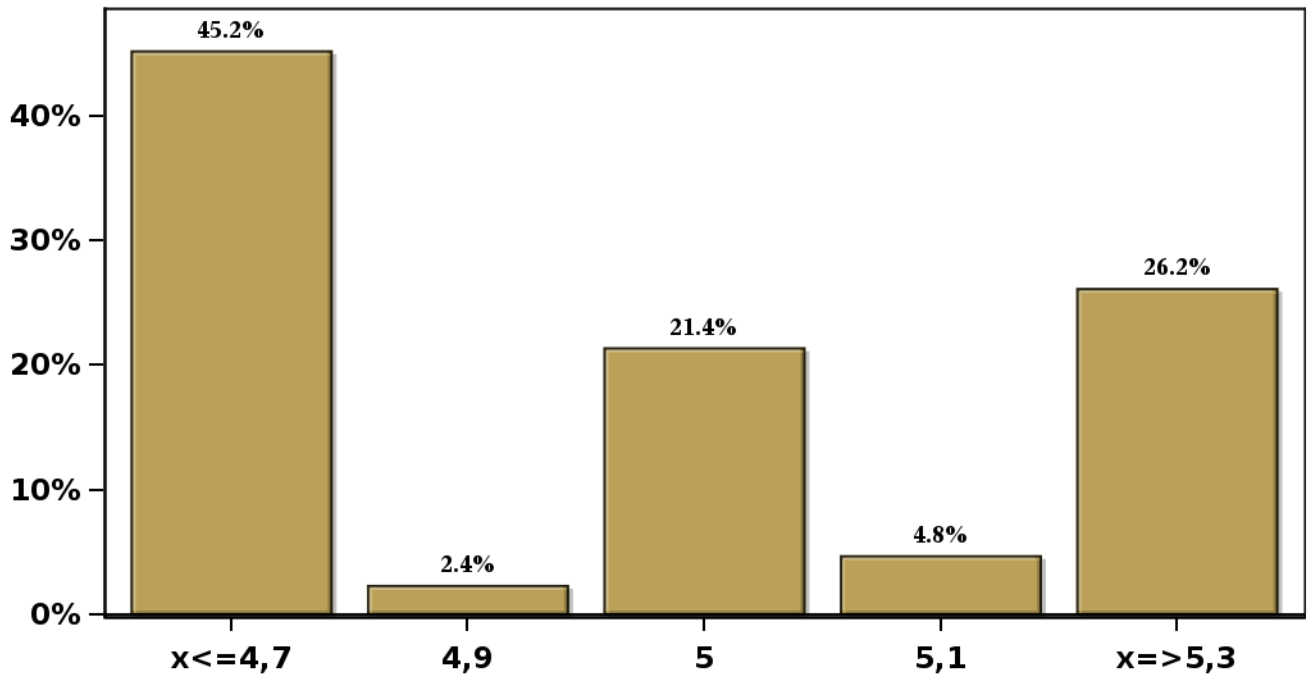
[Click to view summary table](#)

Monthly Survey On Expectations February 2023

Inflation in eleven months (12-month change)

Answers: 42 Median: 5%

% Obs.

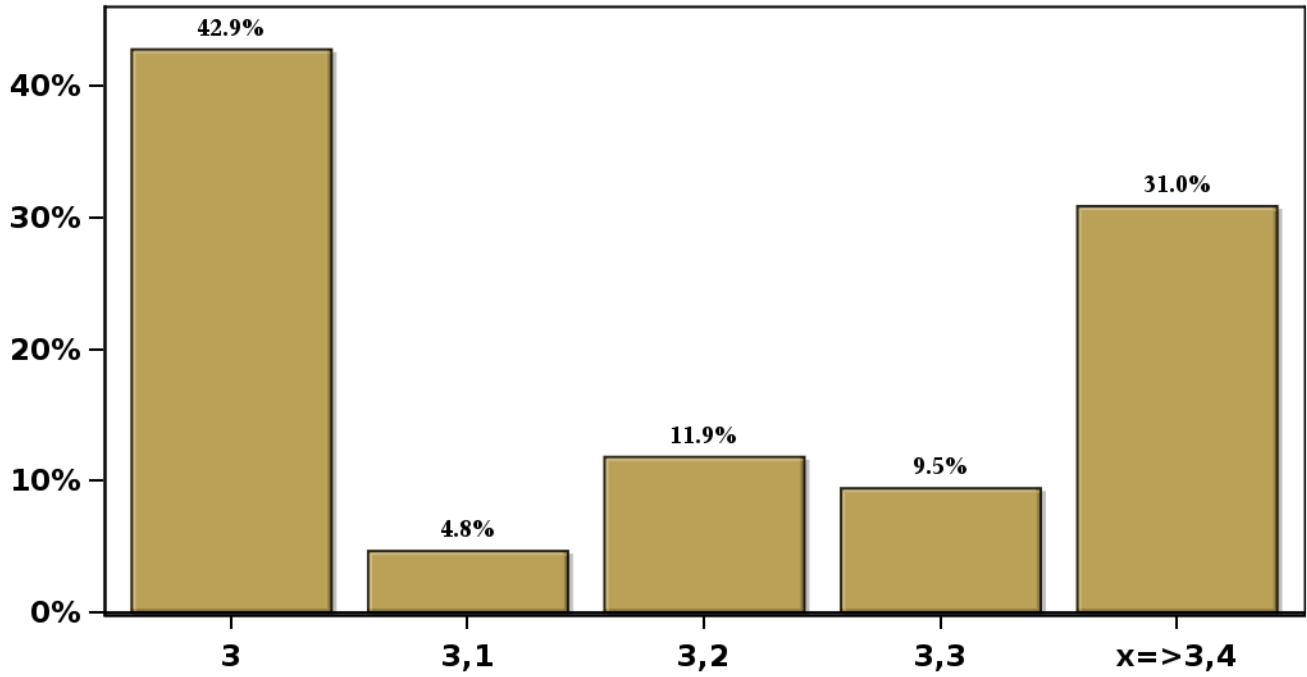


[Click to view summary table](#)

Monthly Survey On Expectations February 2023
Inflation in twenty three months (12-month change)

Answers: 42 Median: 3,2%

% Obs.

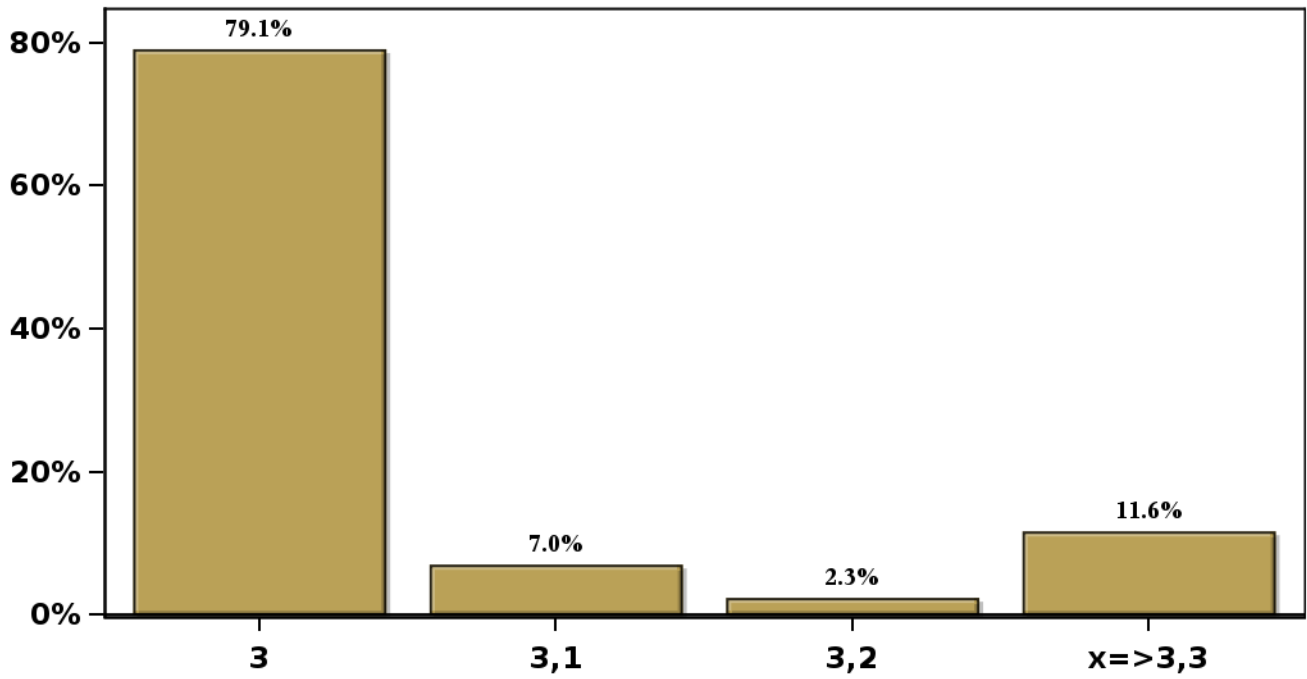


[Click to view summary table](#)

Monthly Survey On Expectations February 2023
Inflation in thirty five months (12-month change)

Answers: 43 Median: 3%

% Obs.



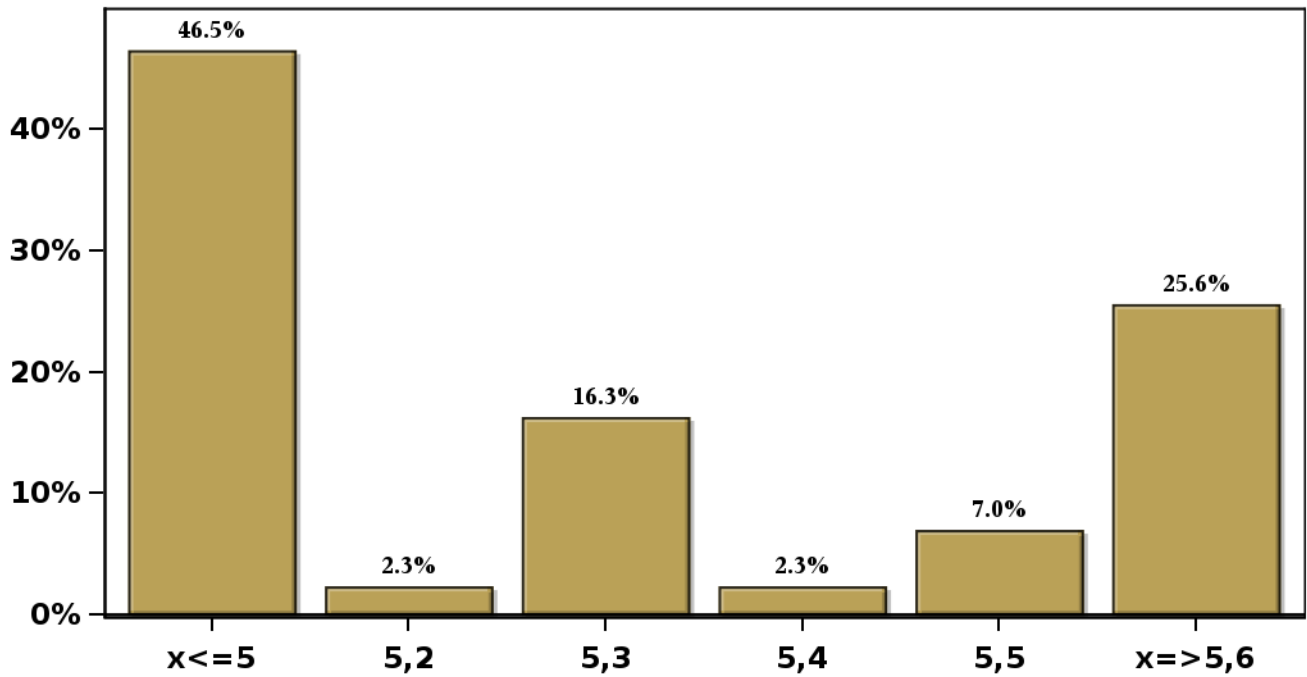
[Click to view summary table](#)

Monthly Survey On Expectations February 2023

Inflation december 2023 (12-month change)

Answers: 43 Median: 5,3%

% Obs.

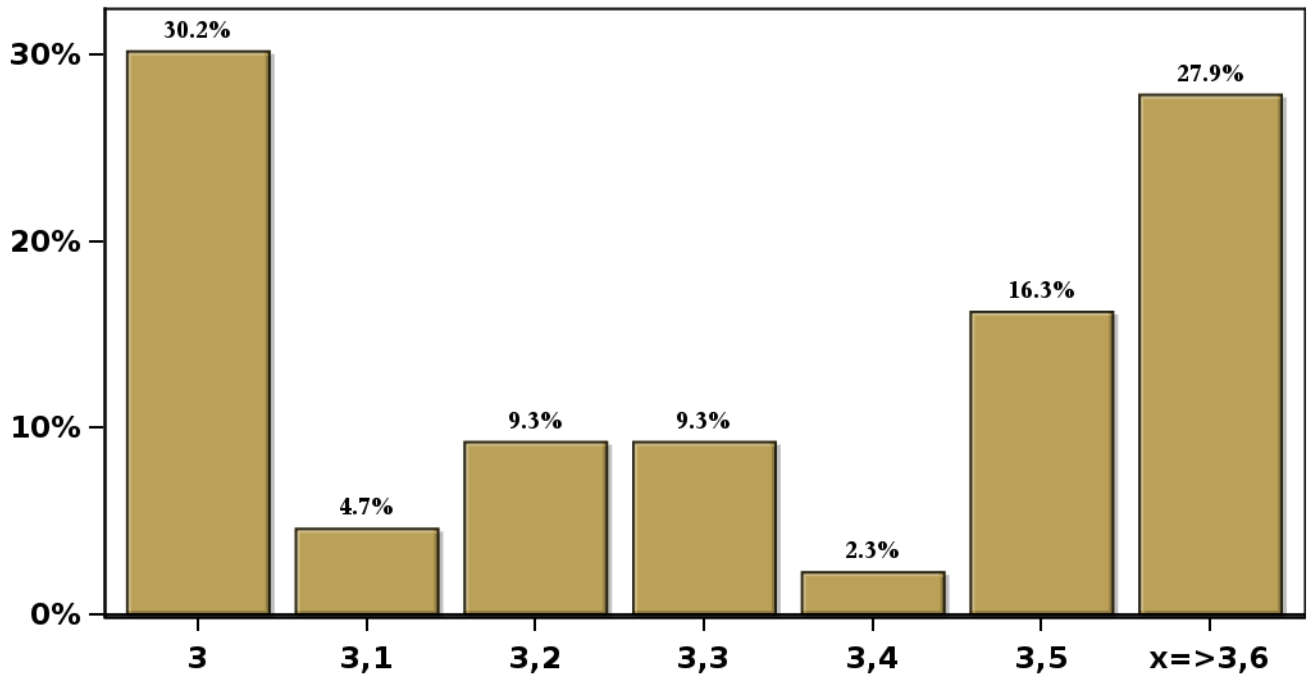


[Click to view summary table](#)

**Monthly Survey On Expectations February 2023
Inflation december 2024 (12-month change)**

Answers: 43 Median: 3,3%

% Obs.



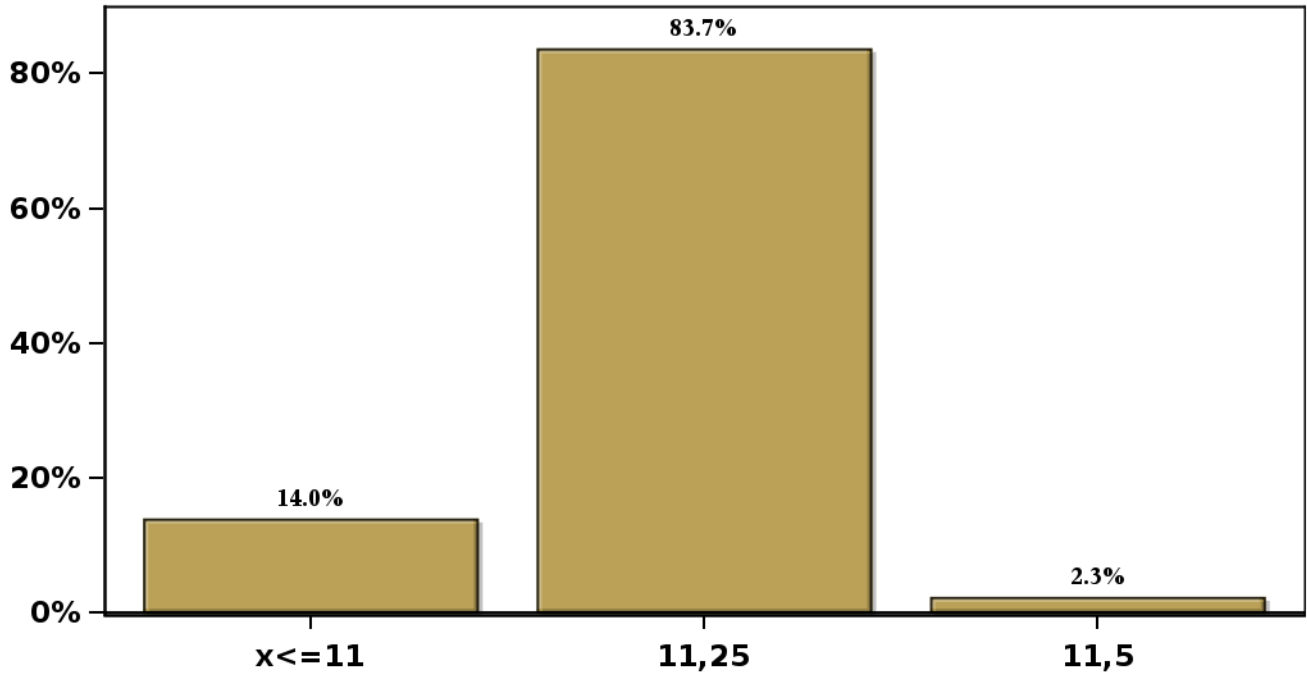
[Click to view summary table](#)

Monthly Survey On Expectations February 2023

Monetary Policy rate target following meeting

Answers: 43 Median: 11,25%

% Obs.

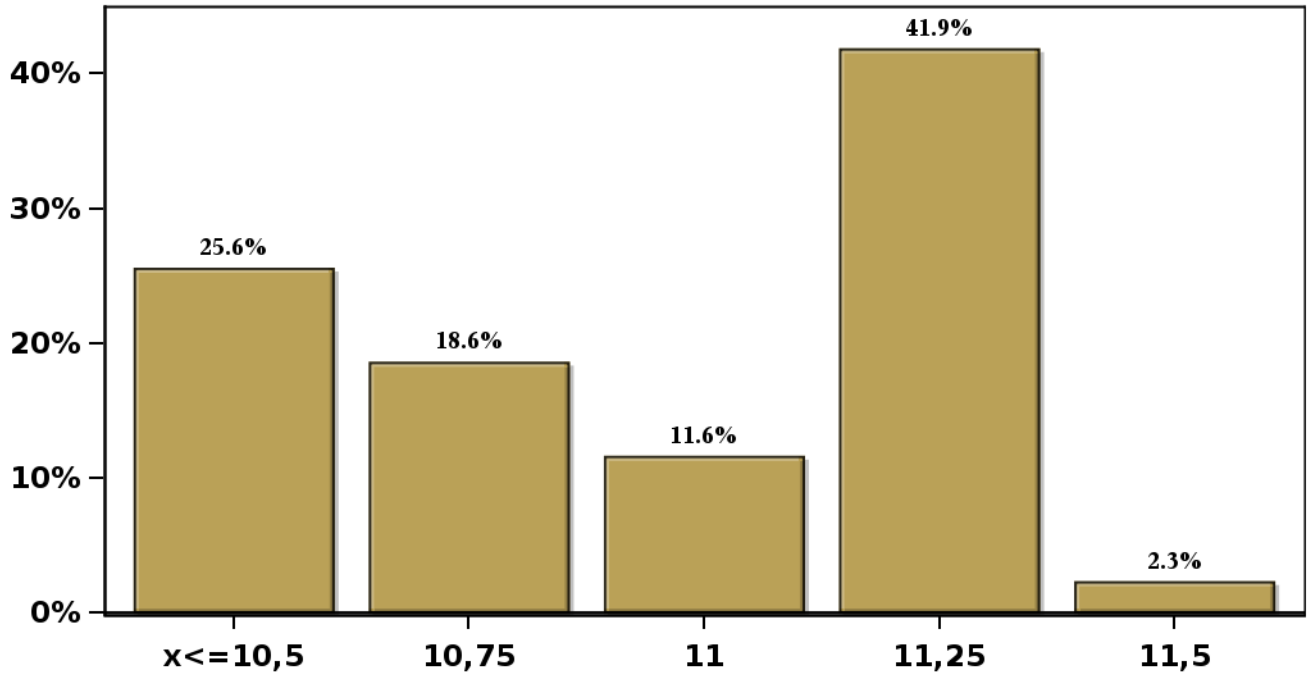


[Click to view summary table](#)

Monthly Survey On Expectations February 2023
Monetary Policy rate target second following meeting

Answers: 43 Median: 11%

% Obs.



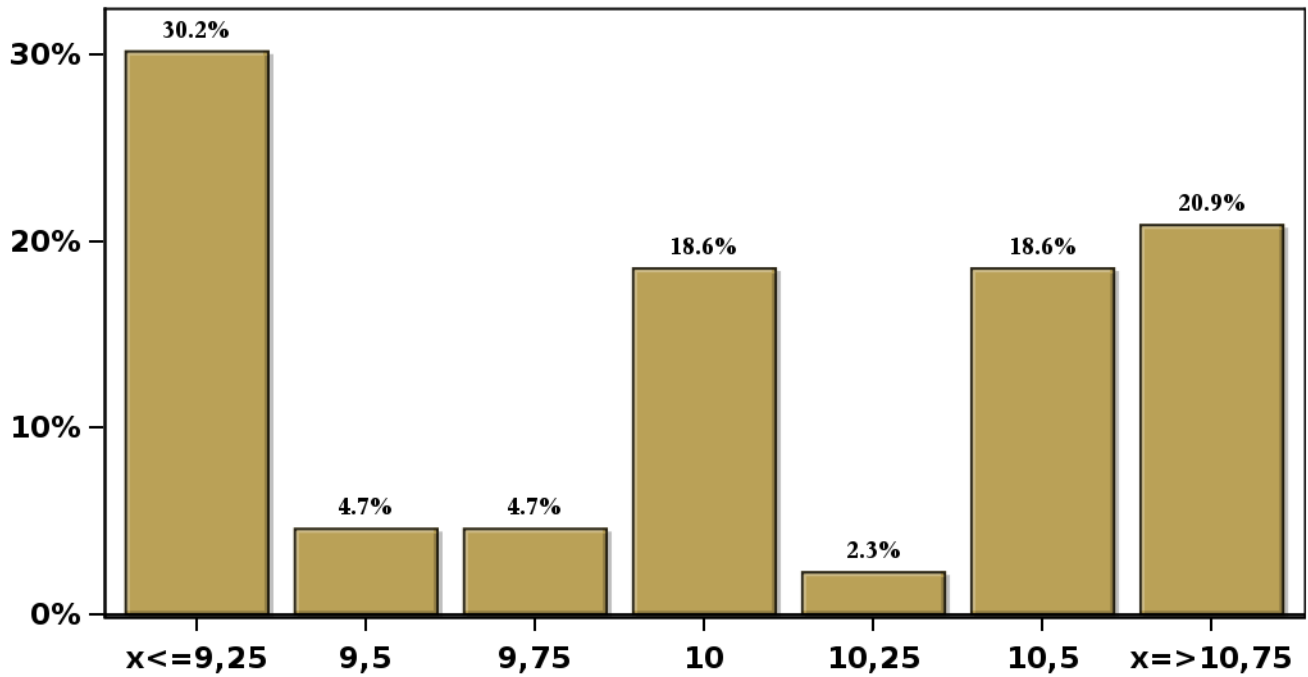
[Click to view summary table](#)

Monthly Survey On Expectations February 2023

Monetary Policy rate target In five months

Answers: 43 Median: 10%

% Obs.



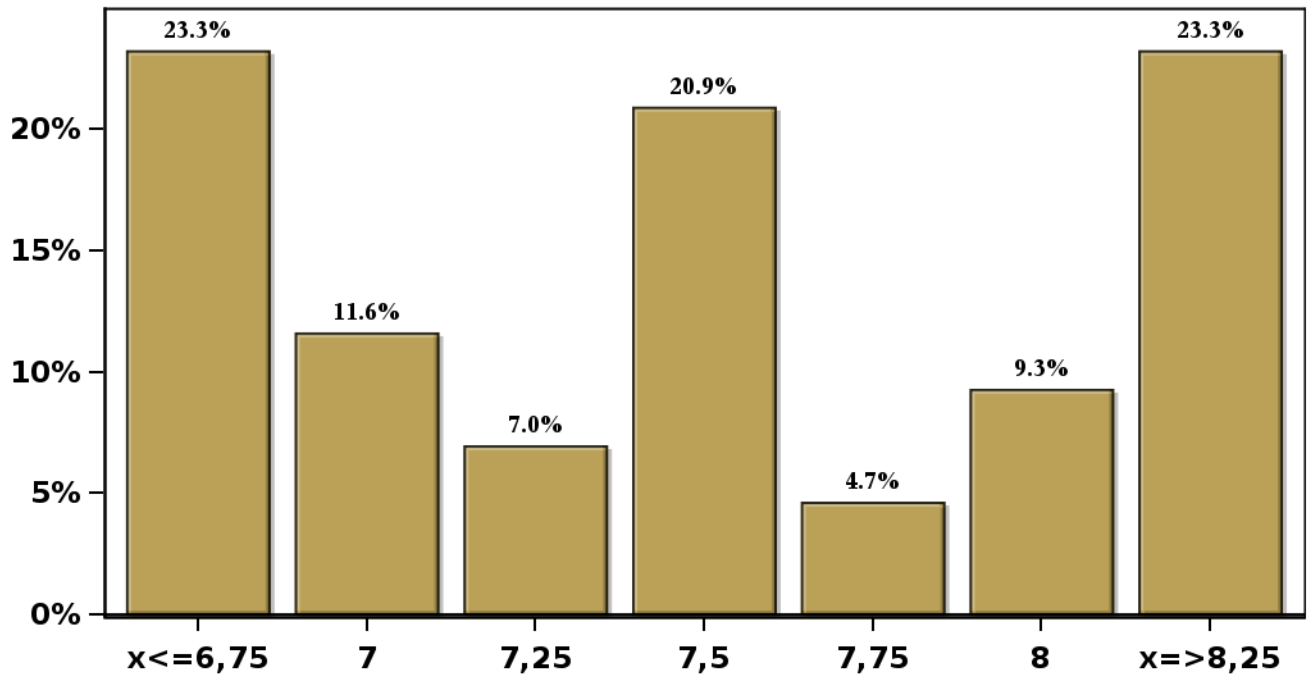
[Click to view summary table](#)

Monthly Survey On Expectations February 2023

Monetary Policy rate target december 2023

Answers: 43 Median: 7,5%

% Obs.



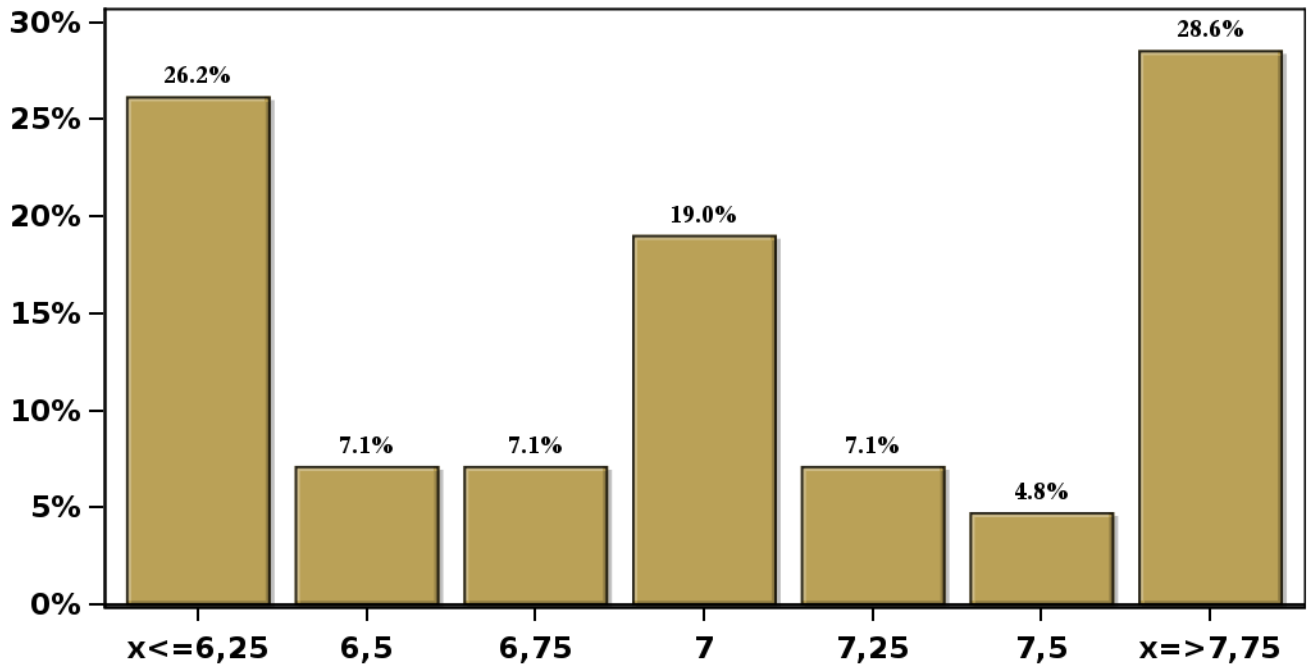
[Click to view summary table](#)

Monthly Survey On Expectations February 2023

Monetary Policy rate target in eleven months

Answers: 42 Median: 7%

% Obs.

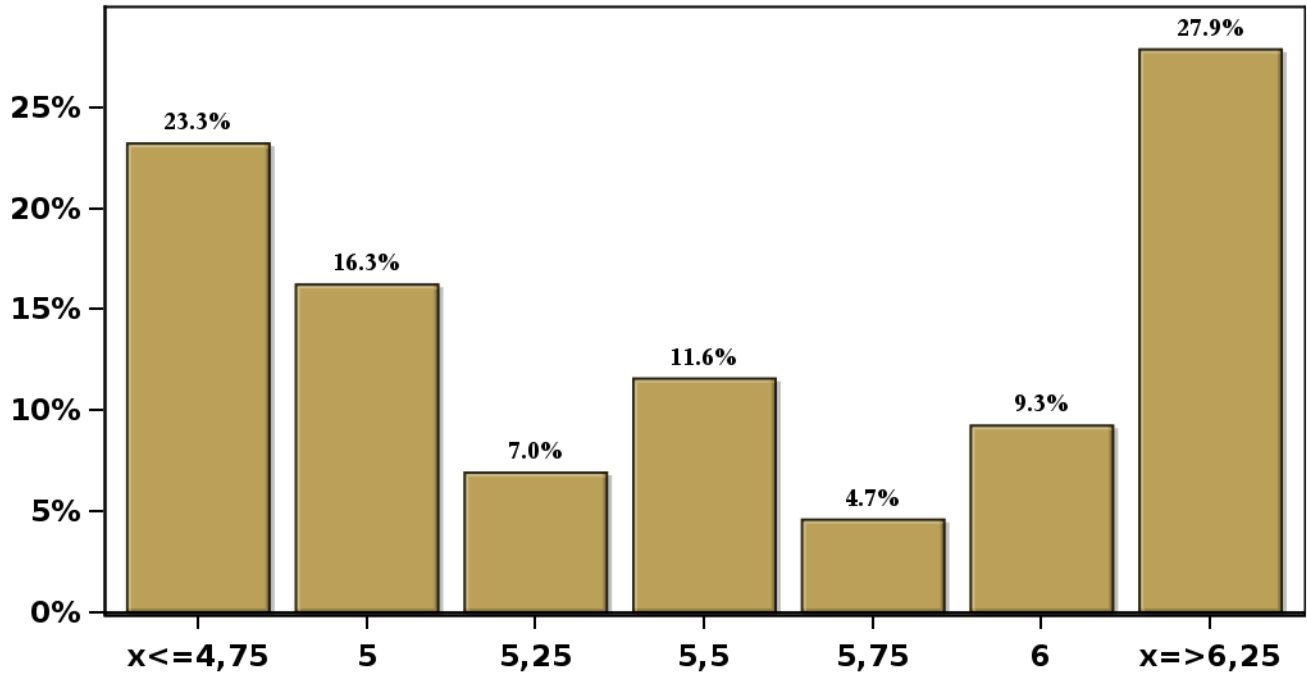


[Click to view summary table](#)

Monthly Survey On Expectations February 2023
Monetary Policy rate target in seventeen months

Answers: 43 Median: 5,5%

% Obs.

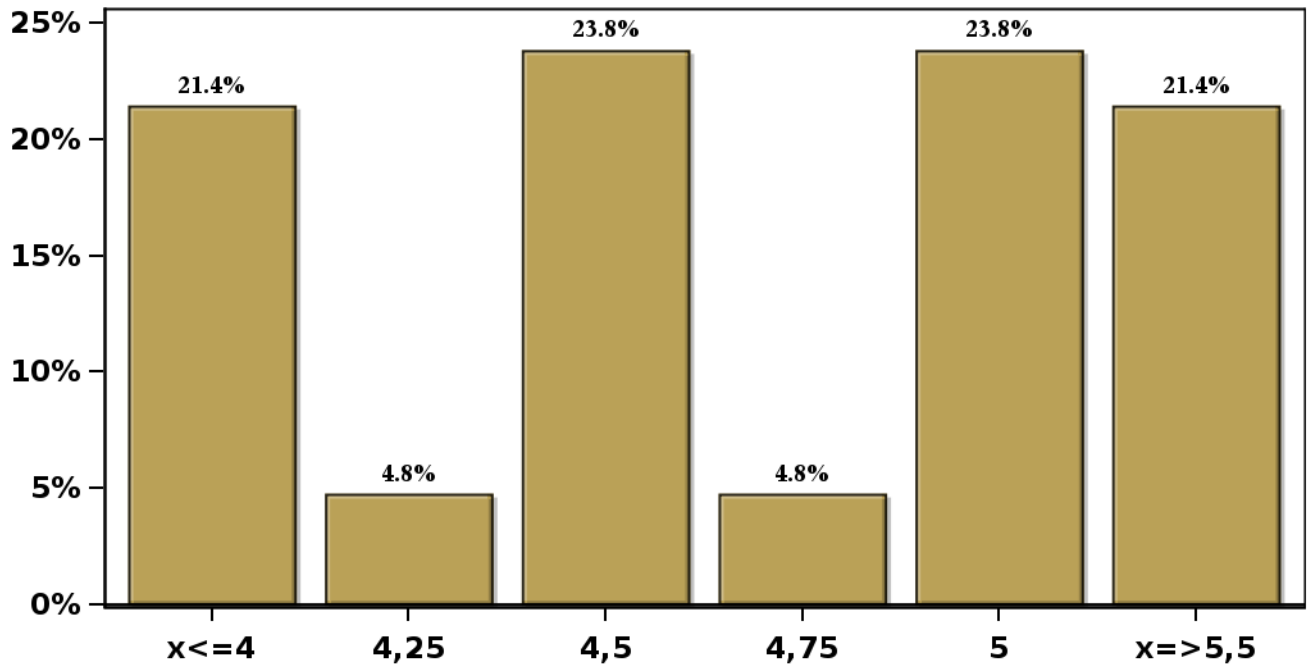


[Click to view summary table](#)

Monthly Survey On Expectations February 2023
Monetary Policy rate target in twenty three months

Answers: 42 Median: 4,75%

% Obs.

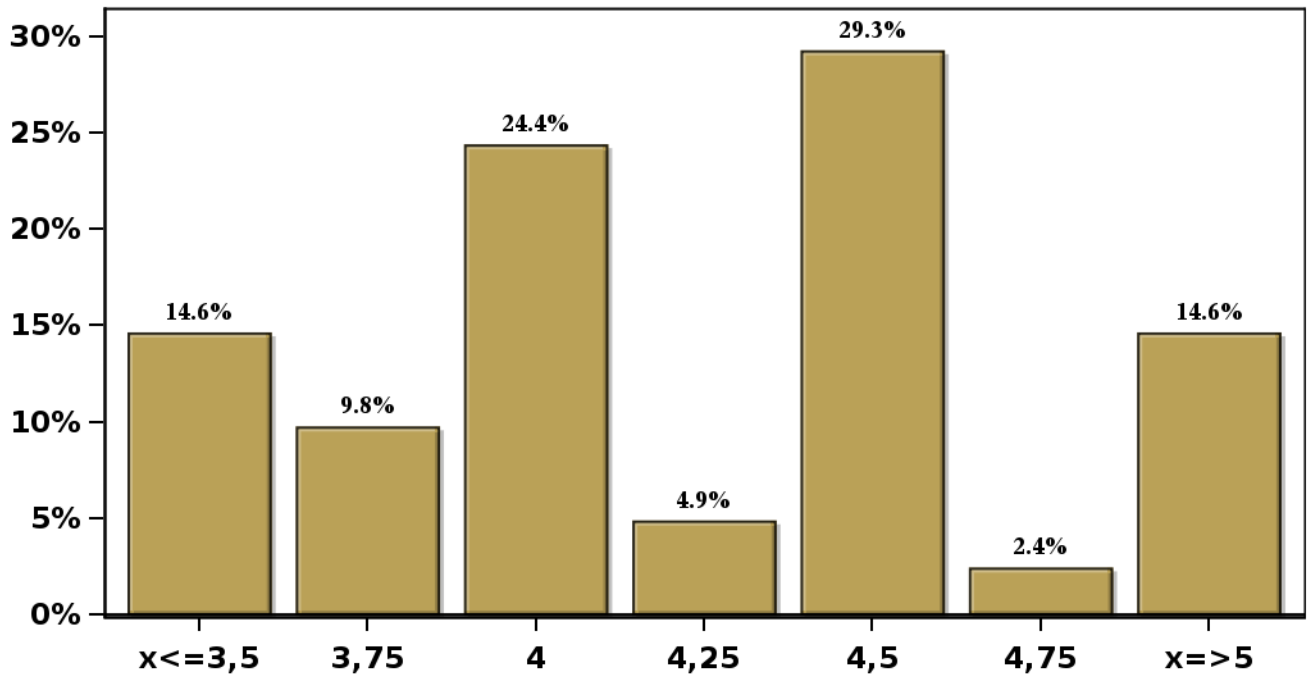


[Click to view summary table](#)

Monthly Survey On Expectations February 2023
Monetary Policy rate target in thirty five months

Answers: 41 Median: 4,25%

% Obs.



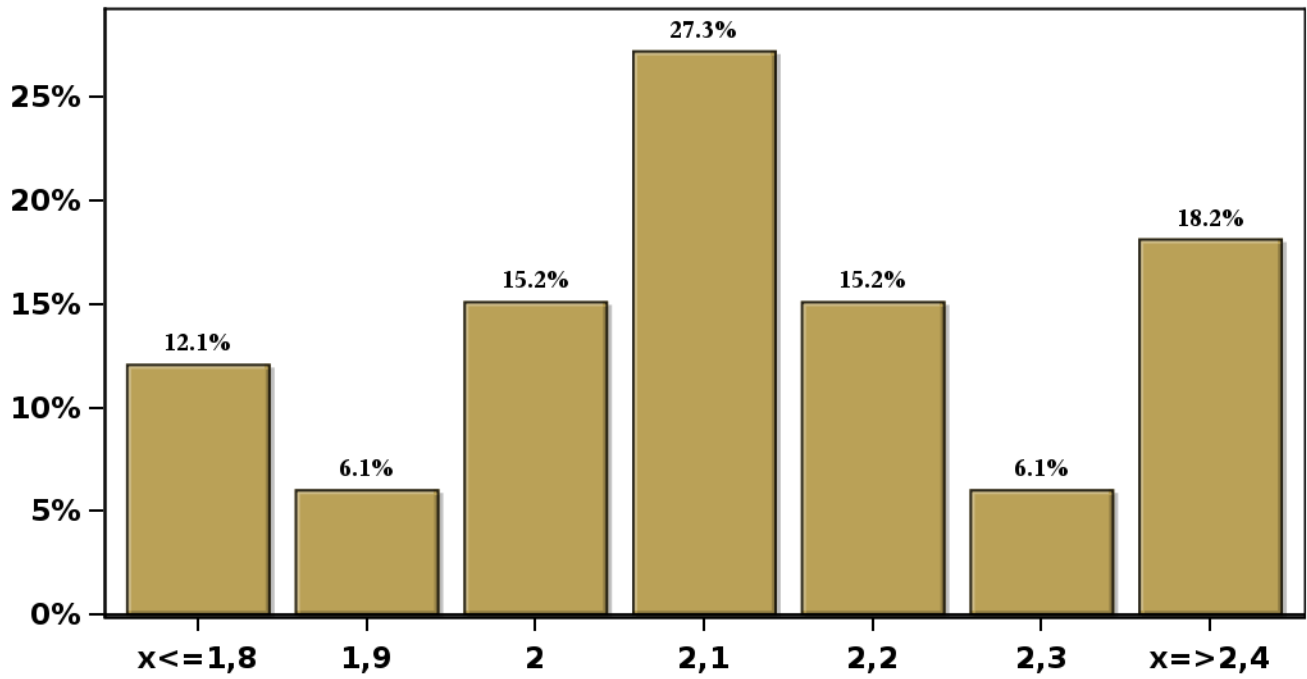
[Click to view summary table](#)

Monthly Survey On Expectations February 2023

5-Year BCU In two months

Answers: 33 Median: 2,1%

% Obs.



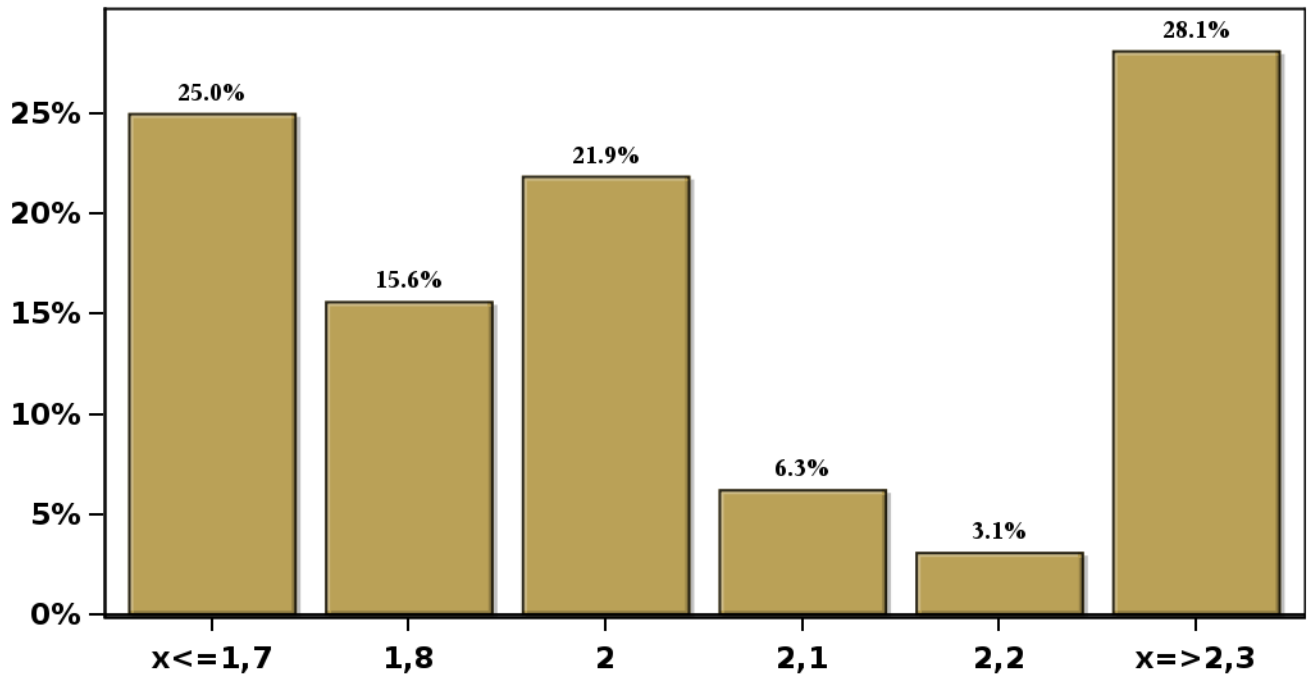
[Click to view summary table](#)

Monthly Survey On Expectations February 2023

5-Year BCU in eleven months

Answers: 32 Median: 2%

% Obs.



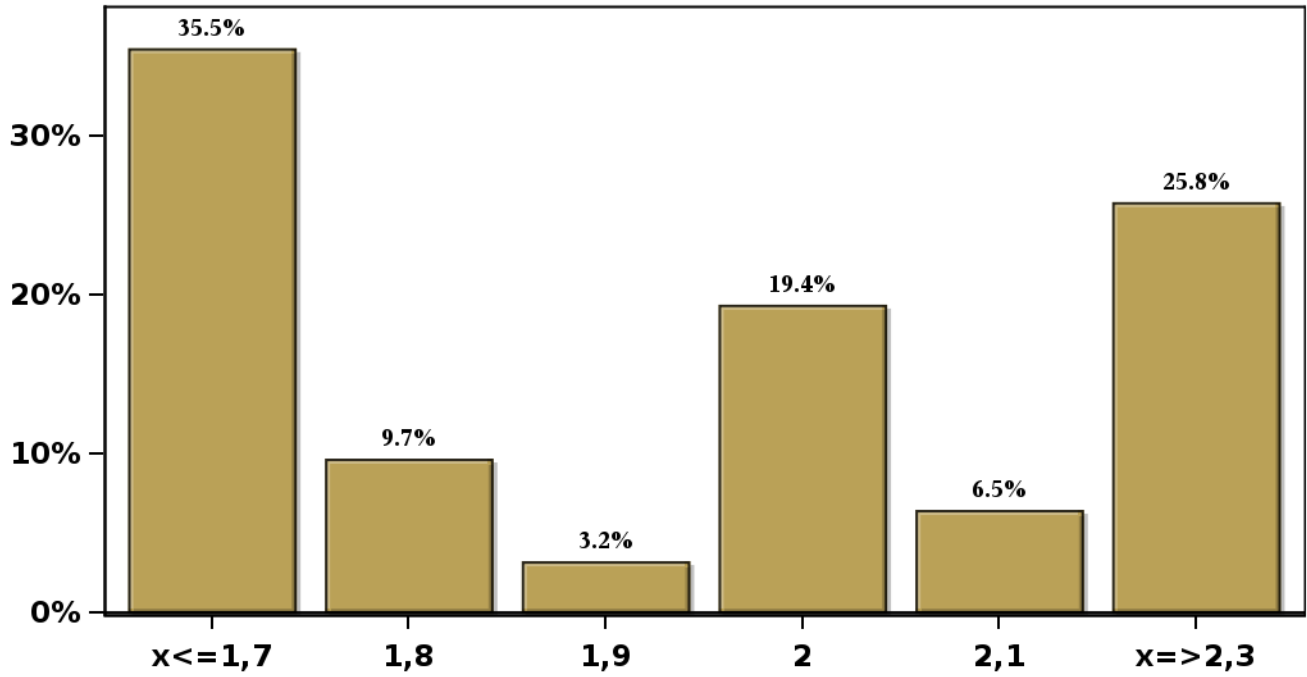
[Click to view summary table](#)

Monthly Survey On Expectations February 2023

5-Year BCU in twenty three months forward

Answers: 31 Median: 2%

% Obs.



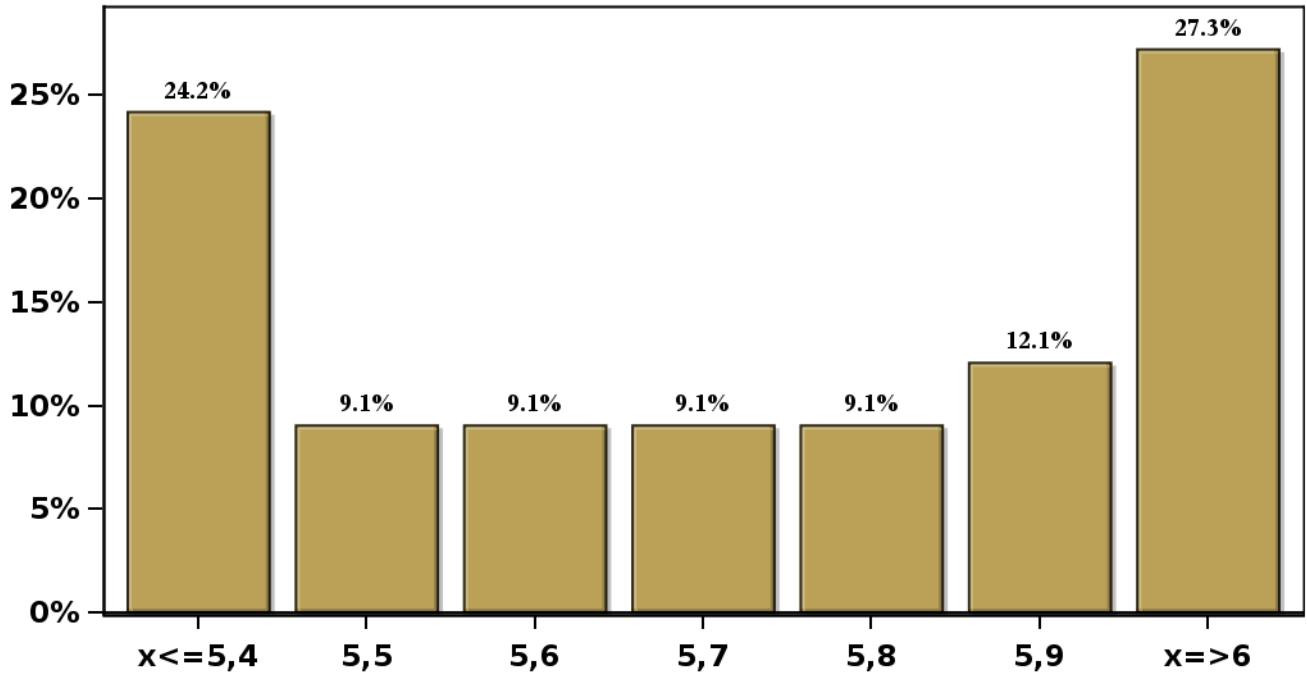
[Click to view summary table](#)

Monthly Survey On Expectations February 2023

5-Year BCP in two months

Answers: 33 Median: 5,7%

% Obs.



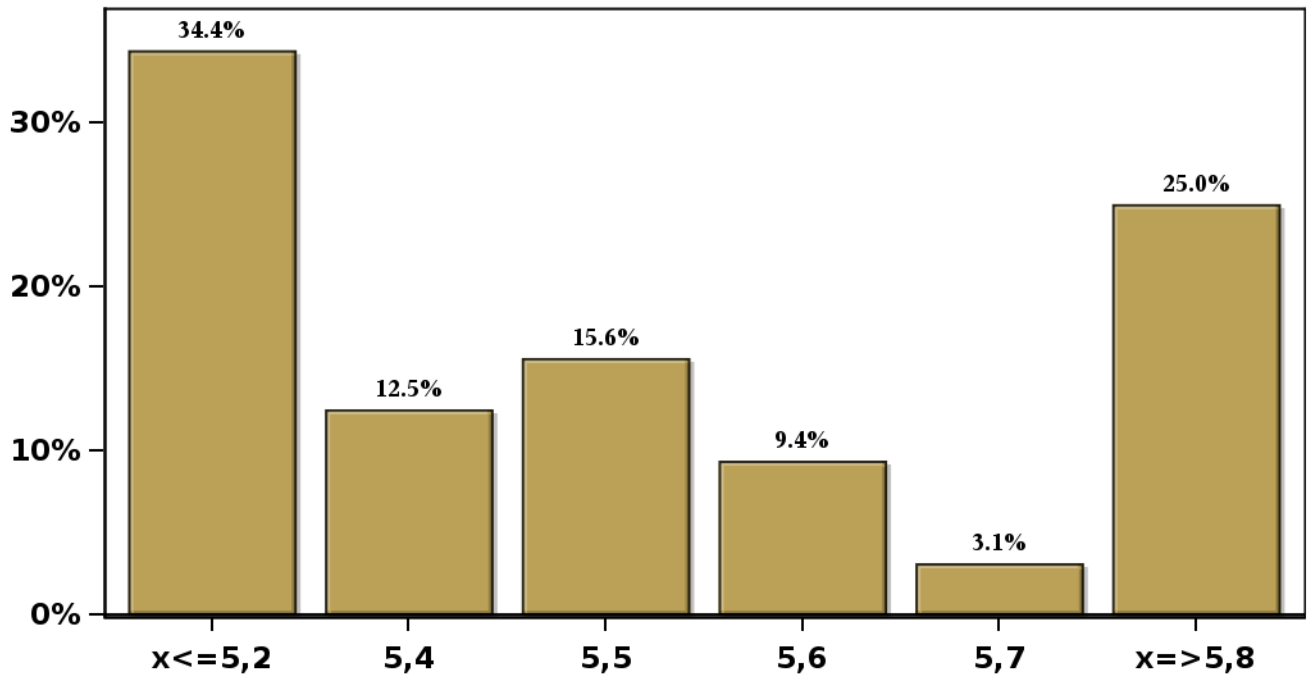
[Click to view summary table](#)

Monthly Survey On Expectations February 2023

5-Year BCP in eleven months

Answers: 32 Median: 5,5%

% Obs.



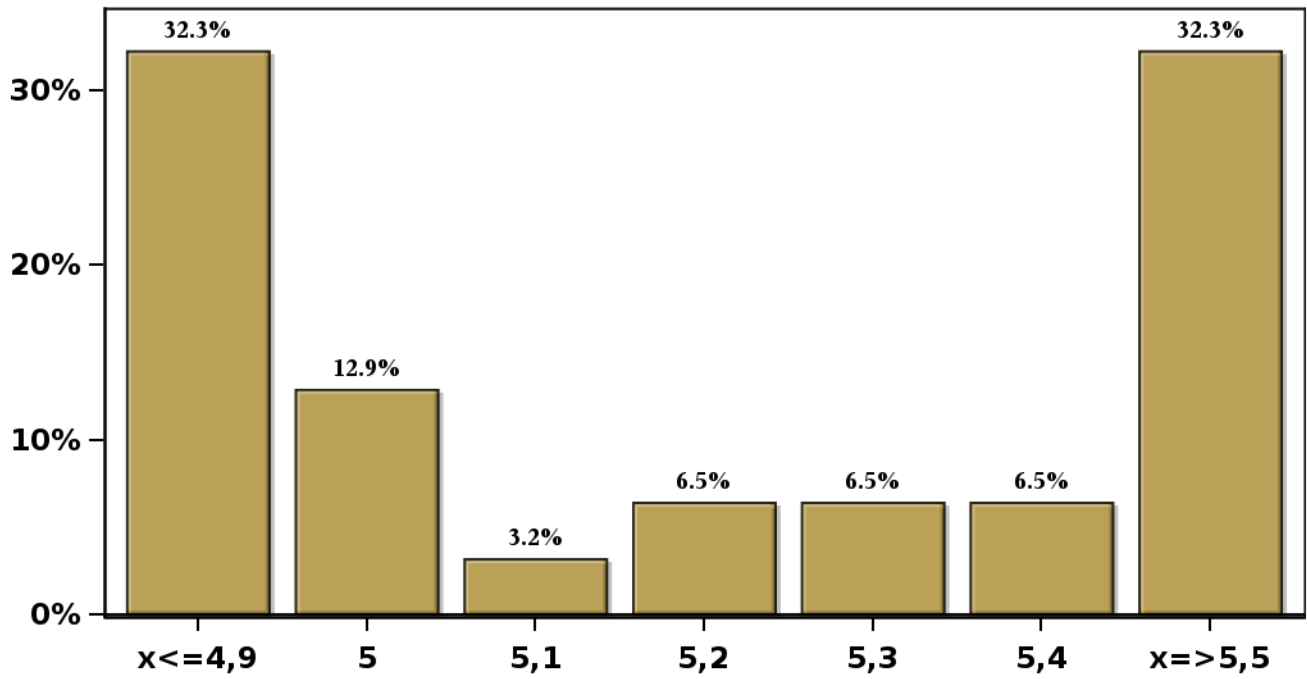
[Click to view summary table](#)

Monthly Survey On Expectations February 2023

5-Year BCP in twenty three months forward

Answers: 31 Median: 5,2%

% Obs.



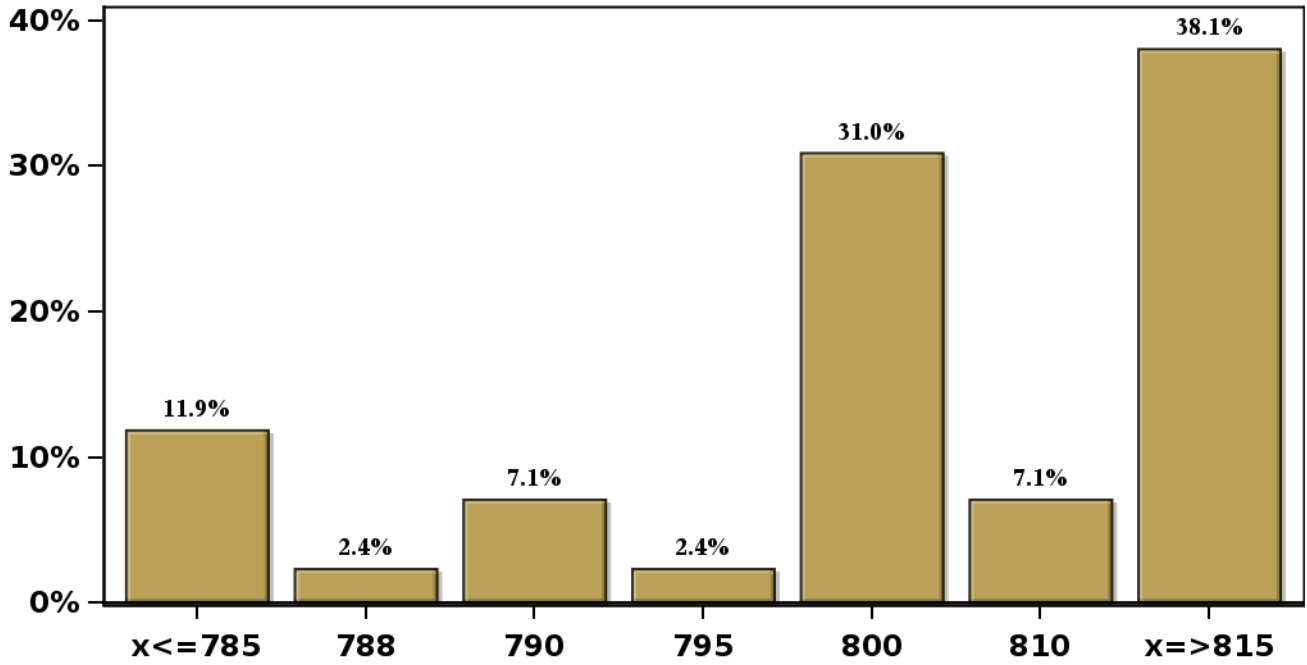
[Click to view summary table](#)

Monthly Survey On Expectations February 2023

Exchange Rate in two months (CH \$ per US\$)

Answers: 42 Median: \$800

% Obs.

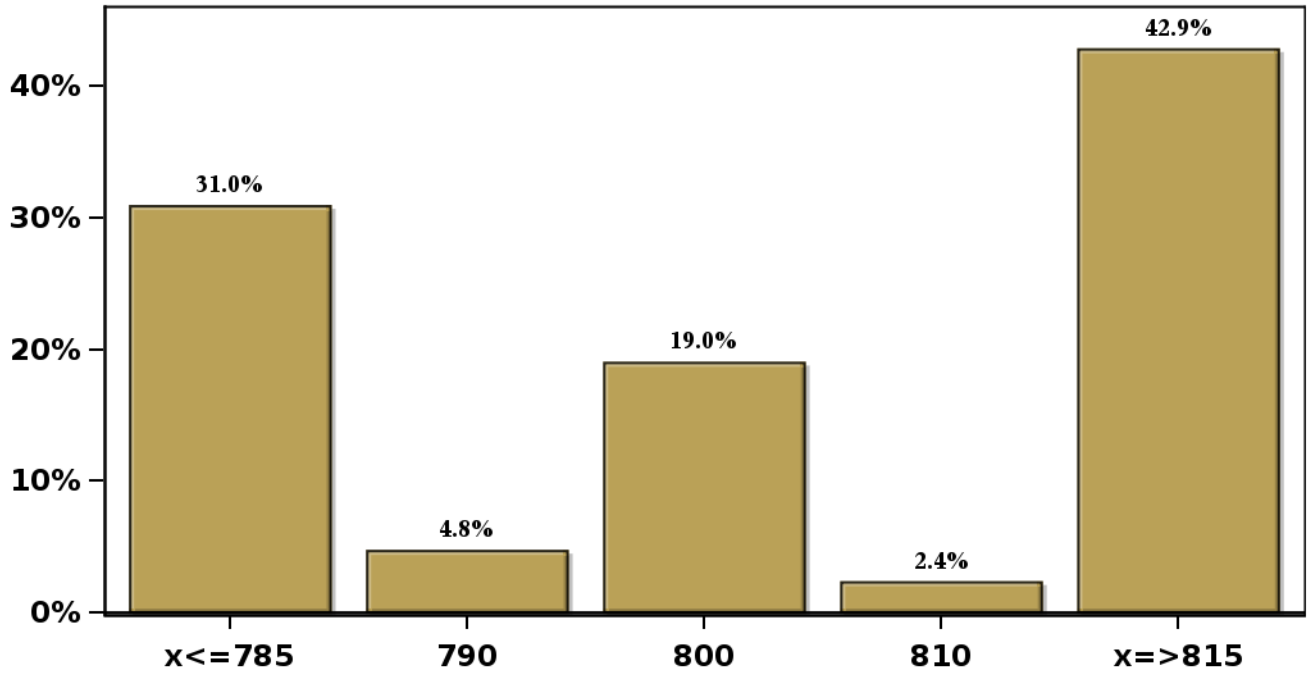


[Click to view summary table](#)

Monthly Survey On Expectations February 2023
Exchange Rate in eleven months (CH \$ per US\$)

Answers: 42 Median: \$800

% Obs.

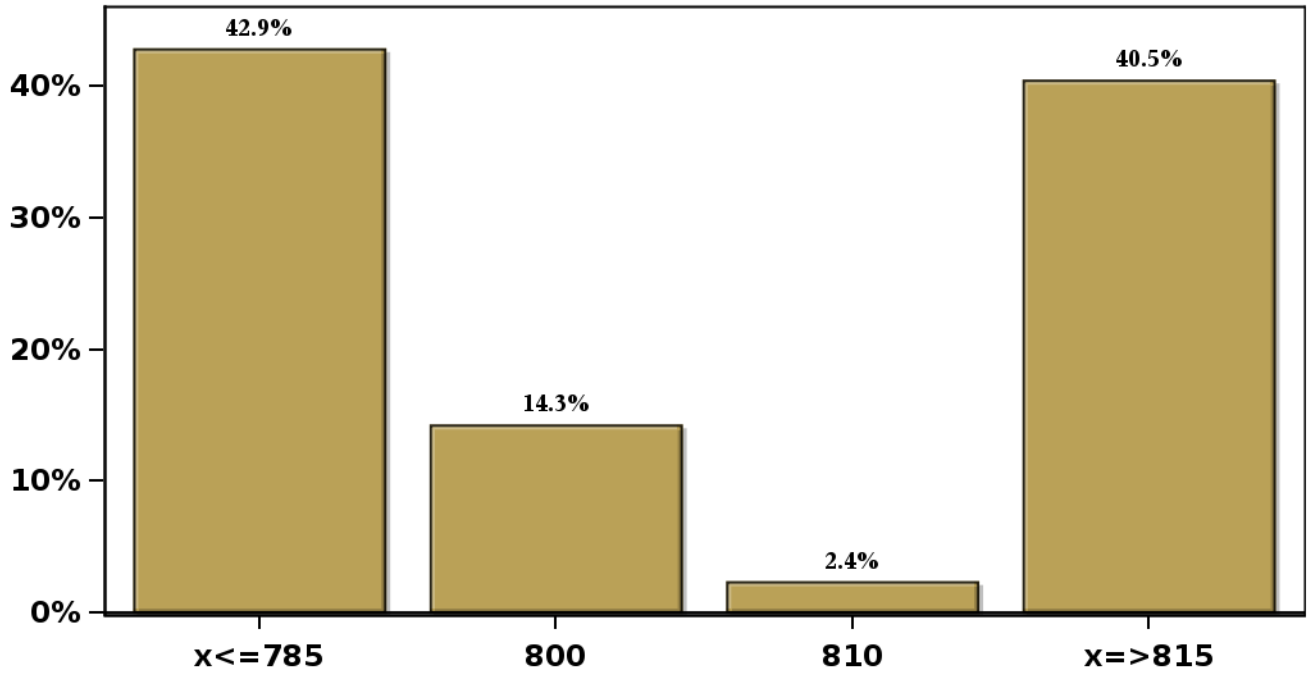


[Click to view summary table](#)

Monthly Survey On Expectations February 2023
Exchange Rate in twenty three months forward (CH \$ per US\$)

Answers: 42 Median: \$800

% Obs.

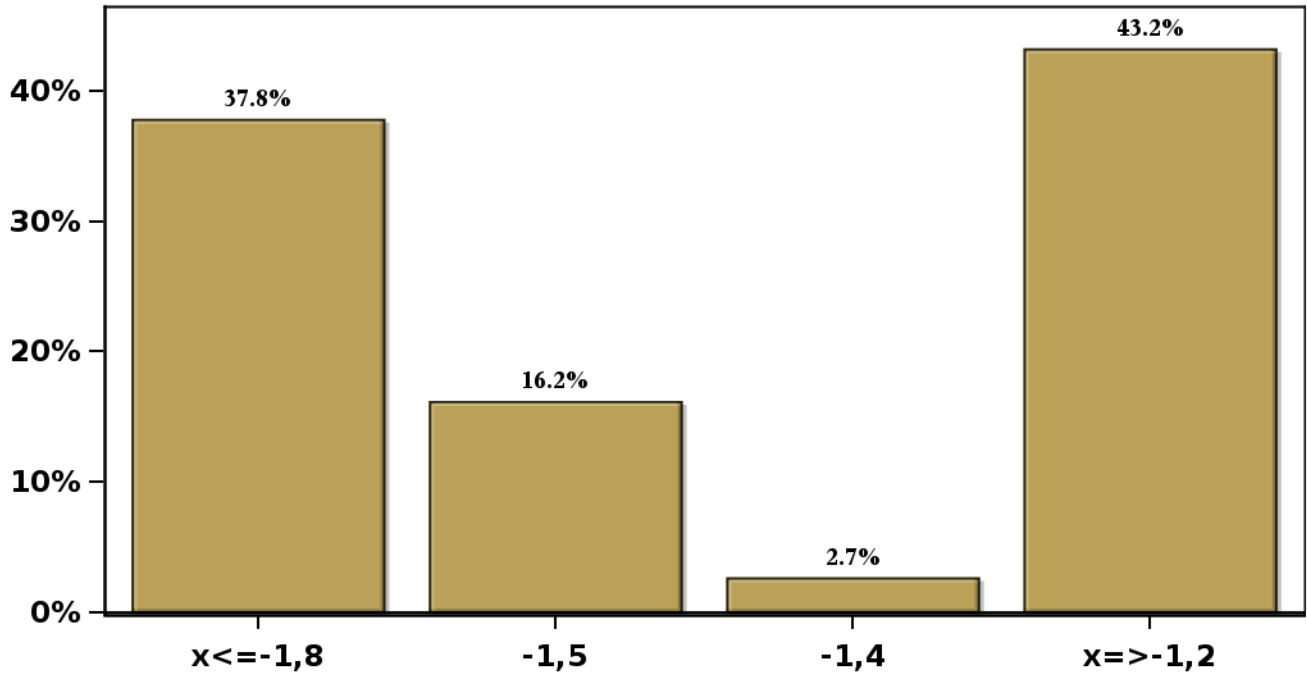


[Click to view summary table](#)

Monthly Survey On Expectations February 2023
IMACEC (Monthly Activity Index) one month ago

Answers: 37 Median: -1,5%

% Obs.

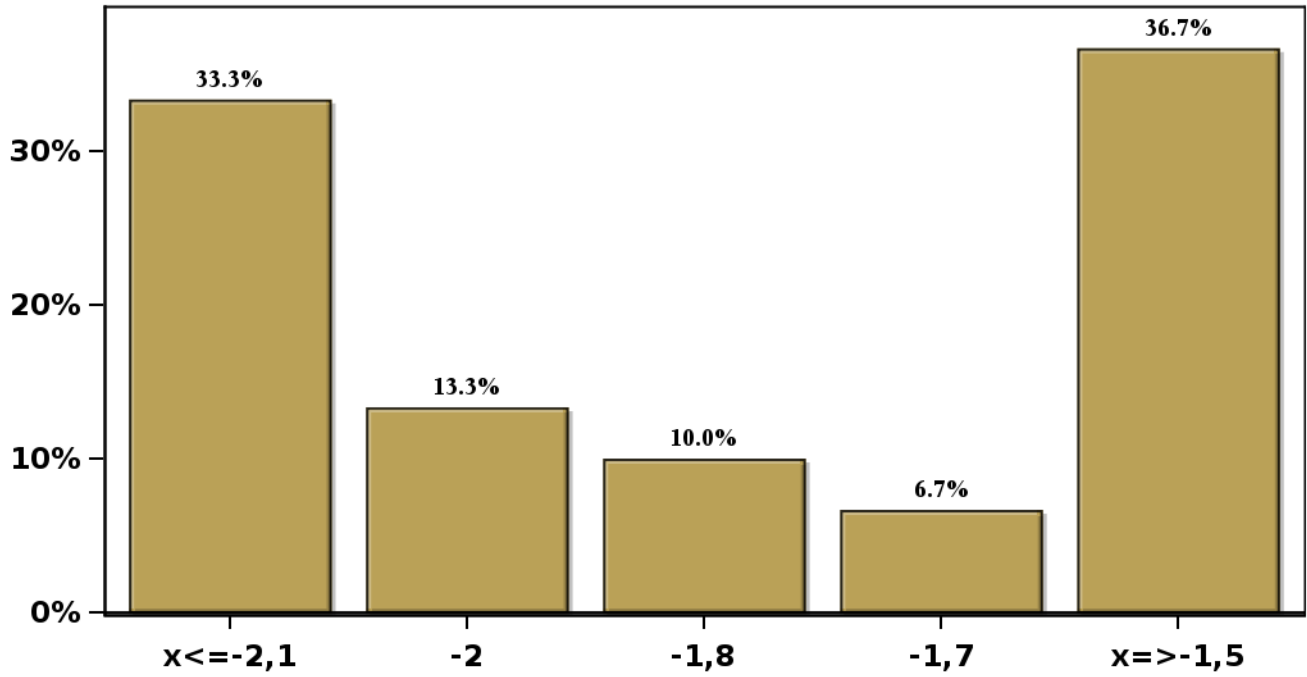


[Click to view summary table](#)

Monthly Survey On Expectations February 2023
IMACEC No Mining (Monthly Activity Index) one month ago

Answers: 30 Median: -1,8%

% Obs.



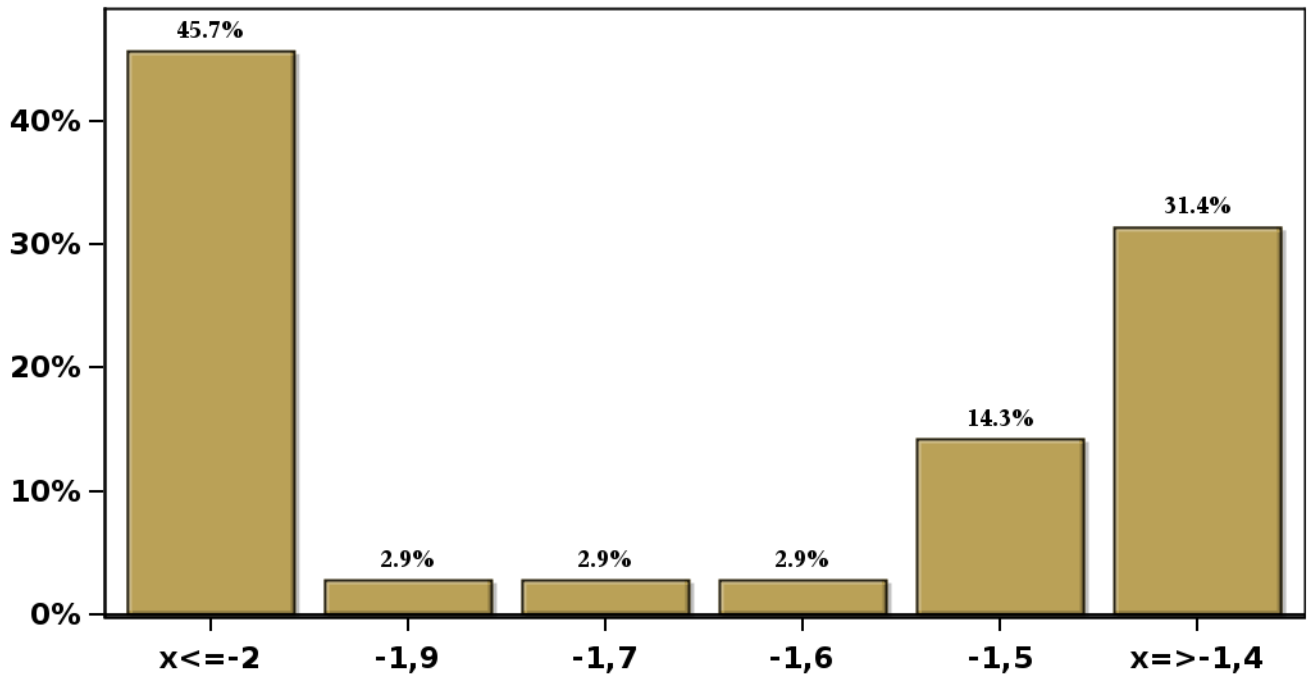
[Click to view summary table](#)

Monthly Survey On Expectations February 2023

GDP within calendar quarter of the survey

Answers: 35 Median: -1,7%

% Obs.



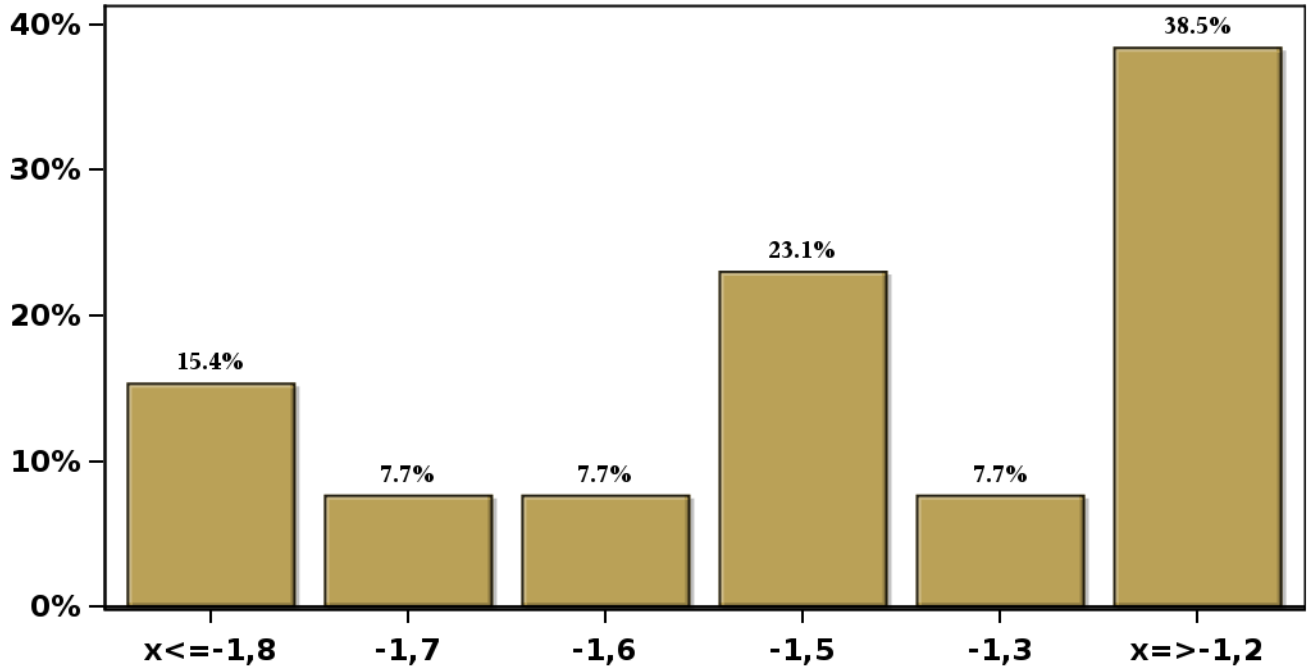
[Click to view summary table](#)

Monthly Survey On Expectations February 2023

GDP year 2023 (12-month change)

Answers: 39 Median: -1,5%

% Obs.



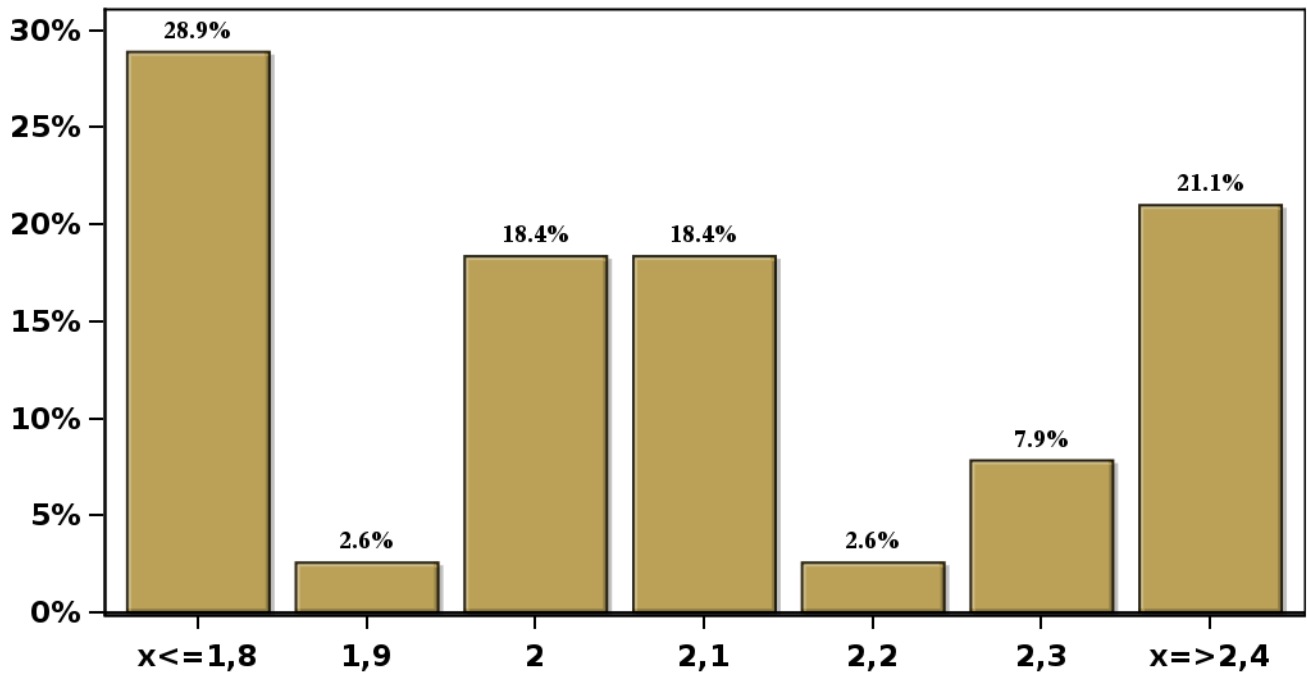
[Click to view summary table](#)

Monthly Survey On Expectations February 2023

GDP year 2024 (12-month change)

Answers: 38 Median: 2,1%

% Obs.



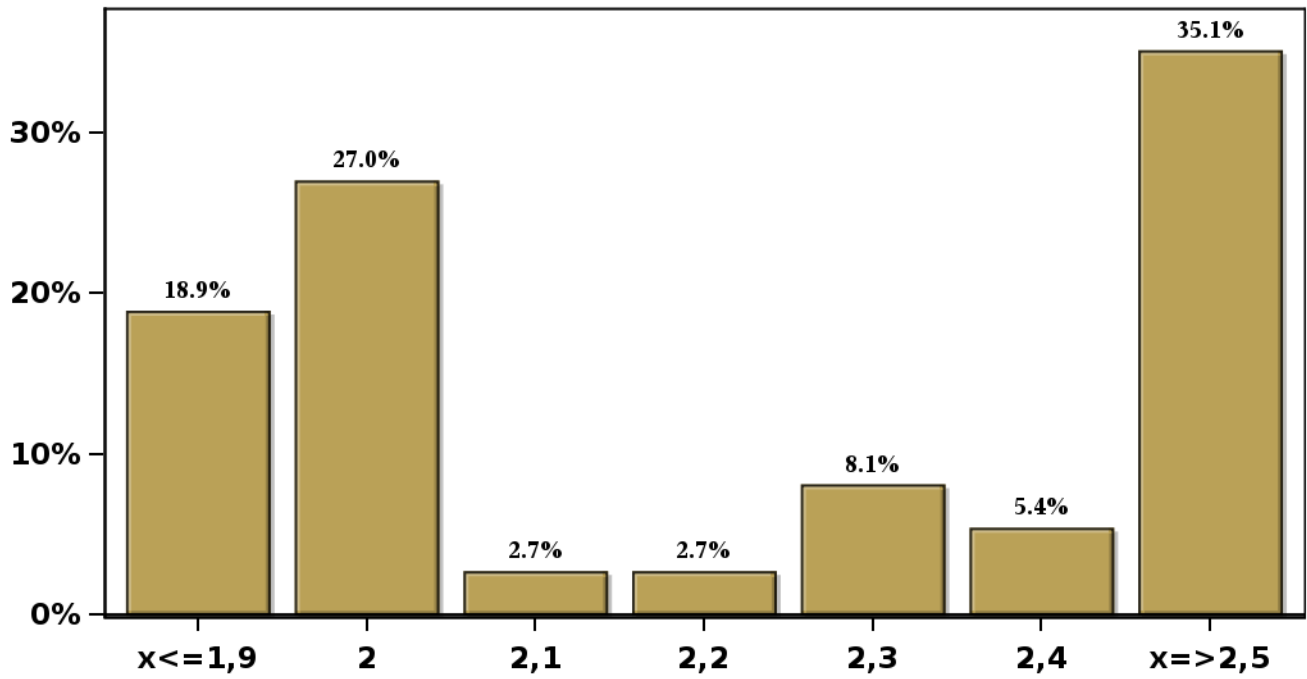
[Click to view summary table](#)

Monthly Survey On Expectations February 2023

GDP year 2025 (12-month change)

Answers: 37 Median: 2,2%

% Obs.

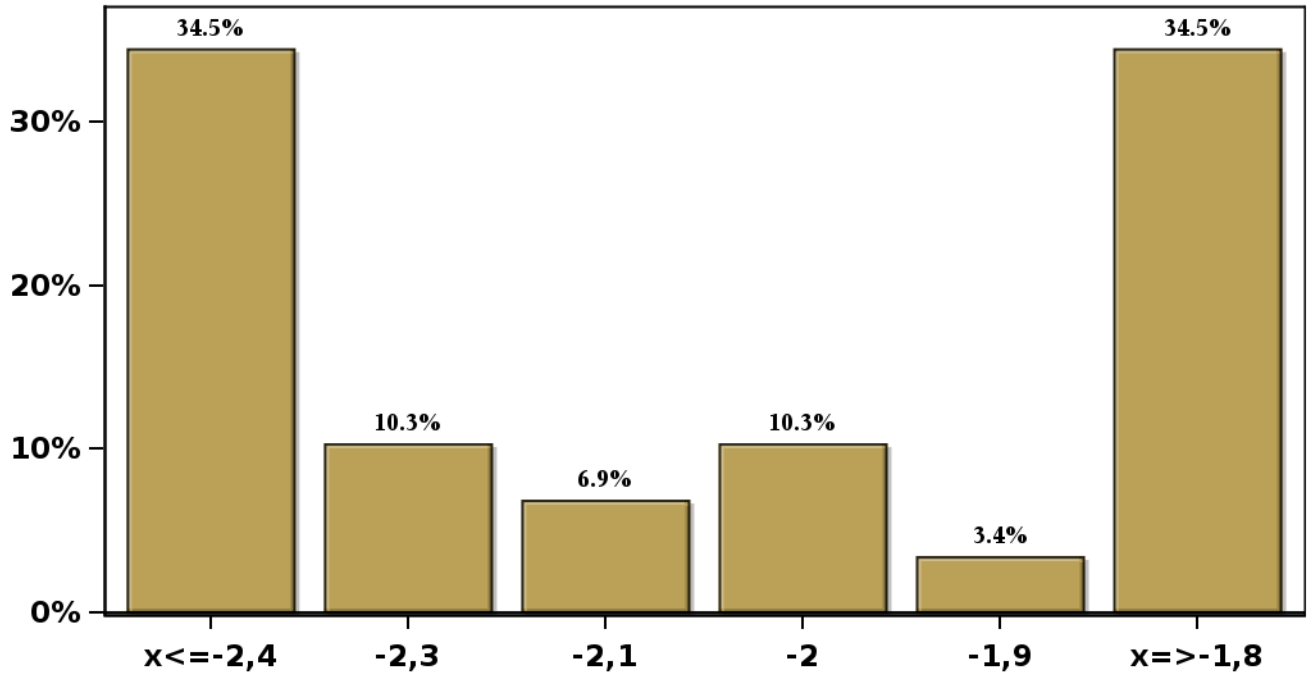


[Click to view summary table](#)

Monthly Survey On Expectations February 2023
GDP No Mining within calendar quarter of the survey

Answers: 29 Median: -2,1%

% Obs.



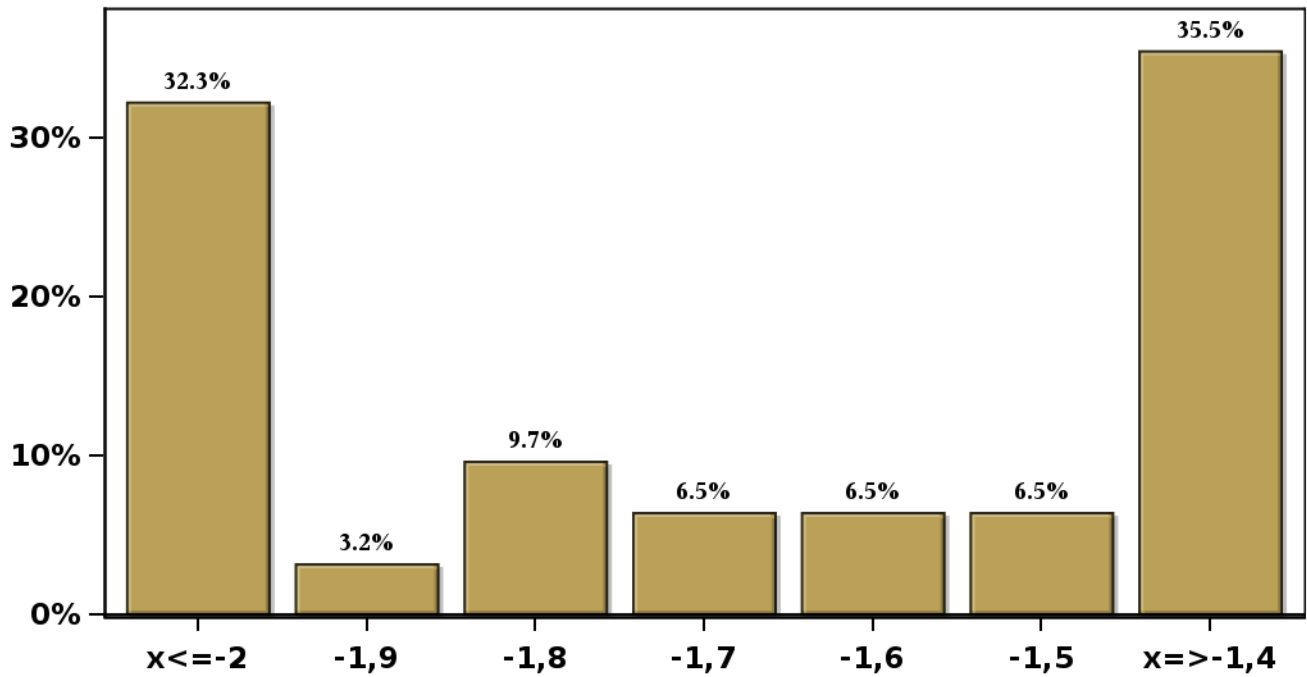
[Click to view summary table](#)

Monthly Survey On Expectations February 2023

GDP No Mining year 2023 (12-month change)

Answers: 31 Median: -1,7%

% Obs.

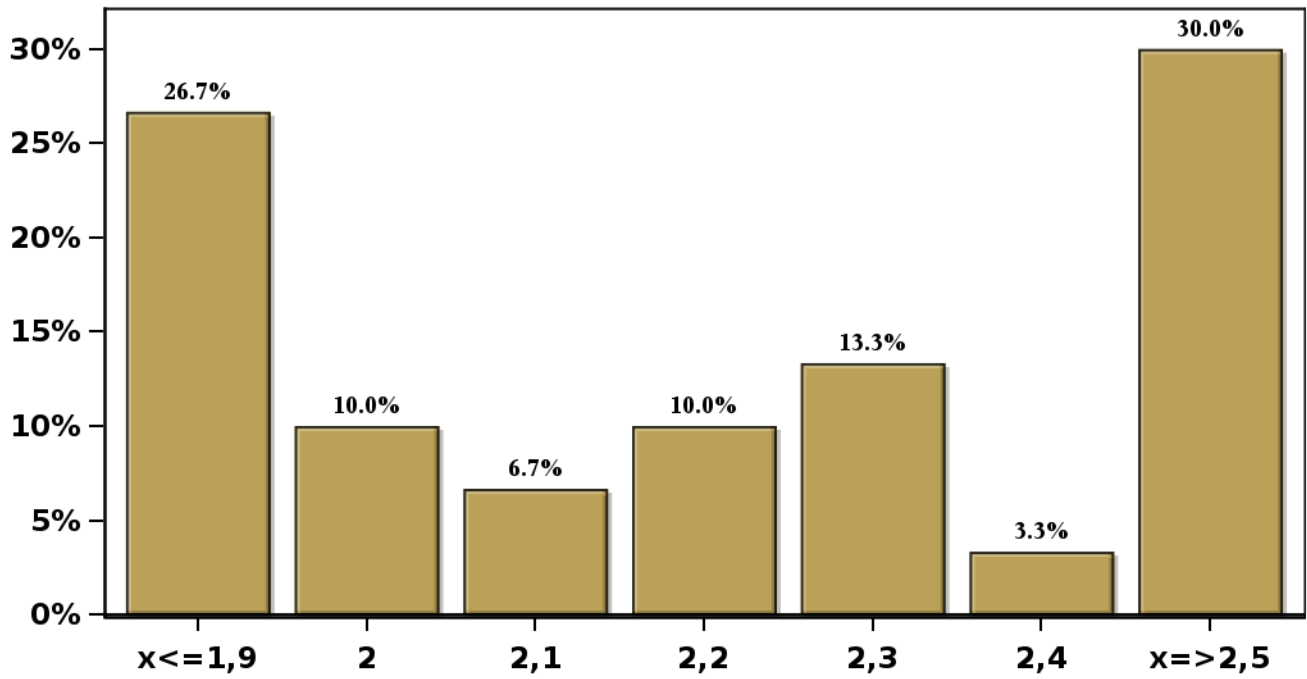


[Click to view summary table](#)

Monthly Survey On Expectations February 2023
GDP No Mining year 2024 (12-month change)

Answers: 30 Median: 2,2%

% Obs.

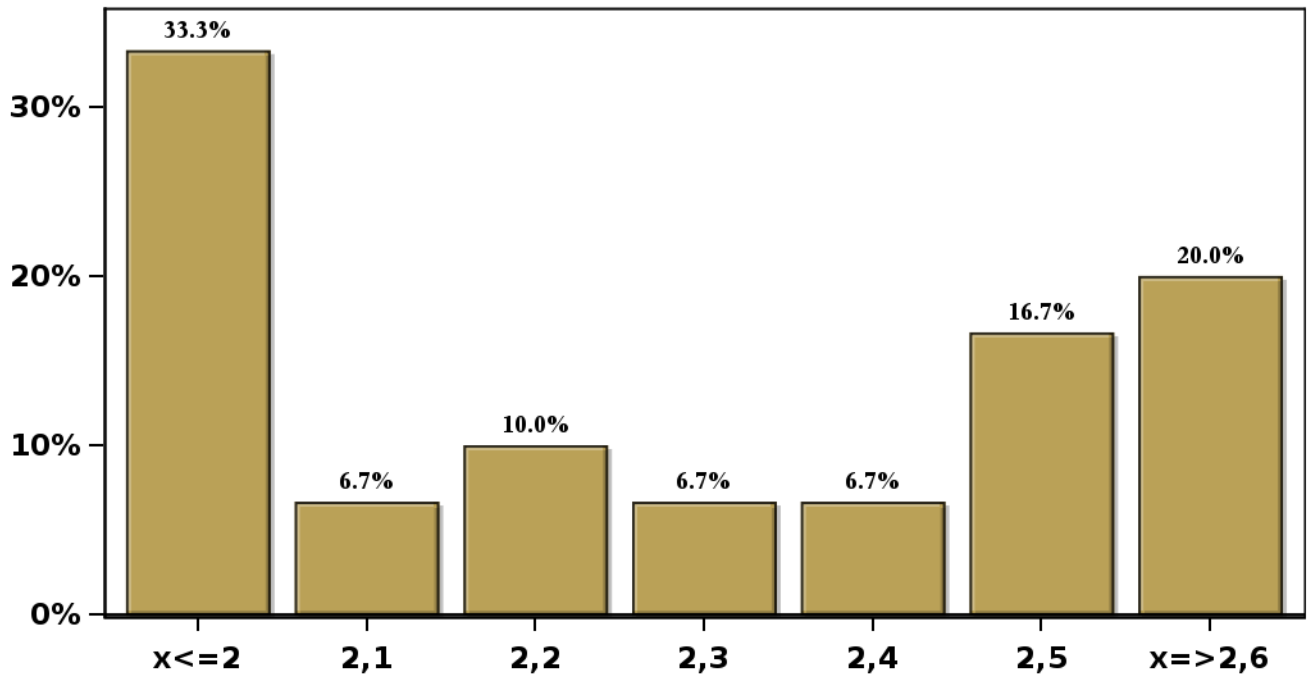


[Click to view summary table](#)

Monthly Survey On Expectations February 2023
GDP No Mining year 2025 (12-month change)

Answers: 30 Median: 2,3%

% Obs.

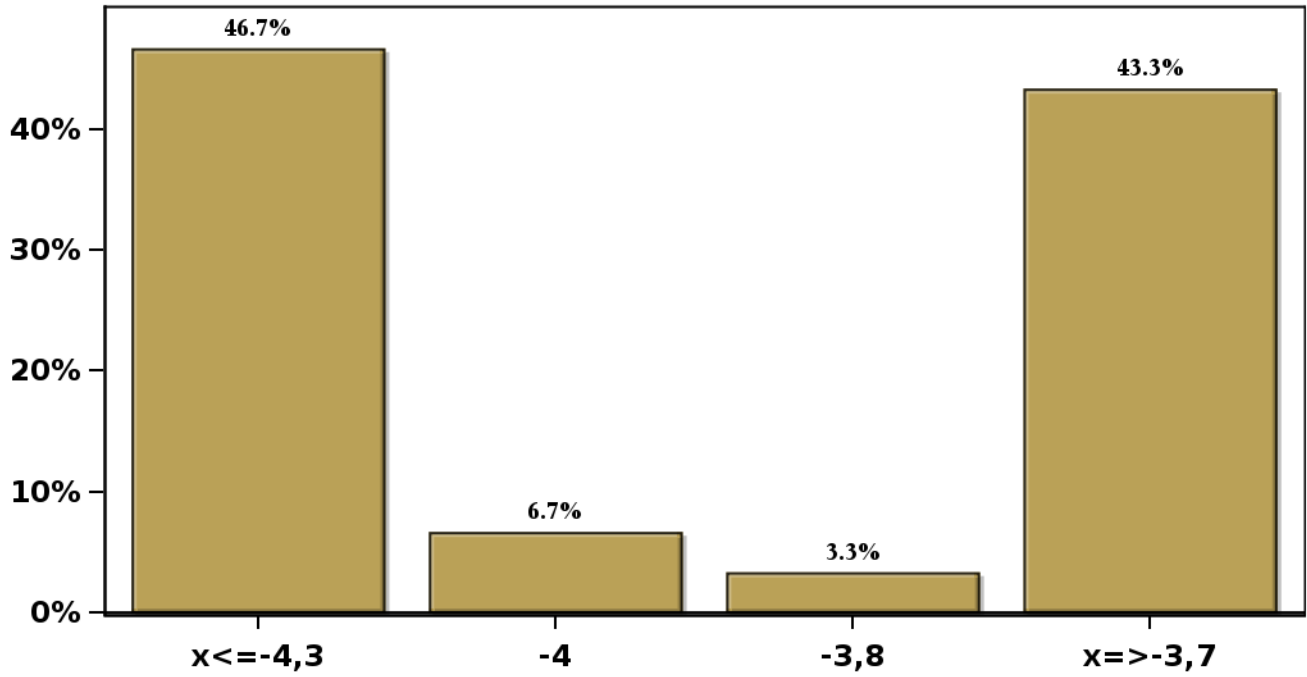


[Click to view summary table](#)

Monthly Survey On Expectations February 2023
HFC including NPO year 2023 (12-month change)

Answers: 30 Median: -4%

% Obs.

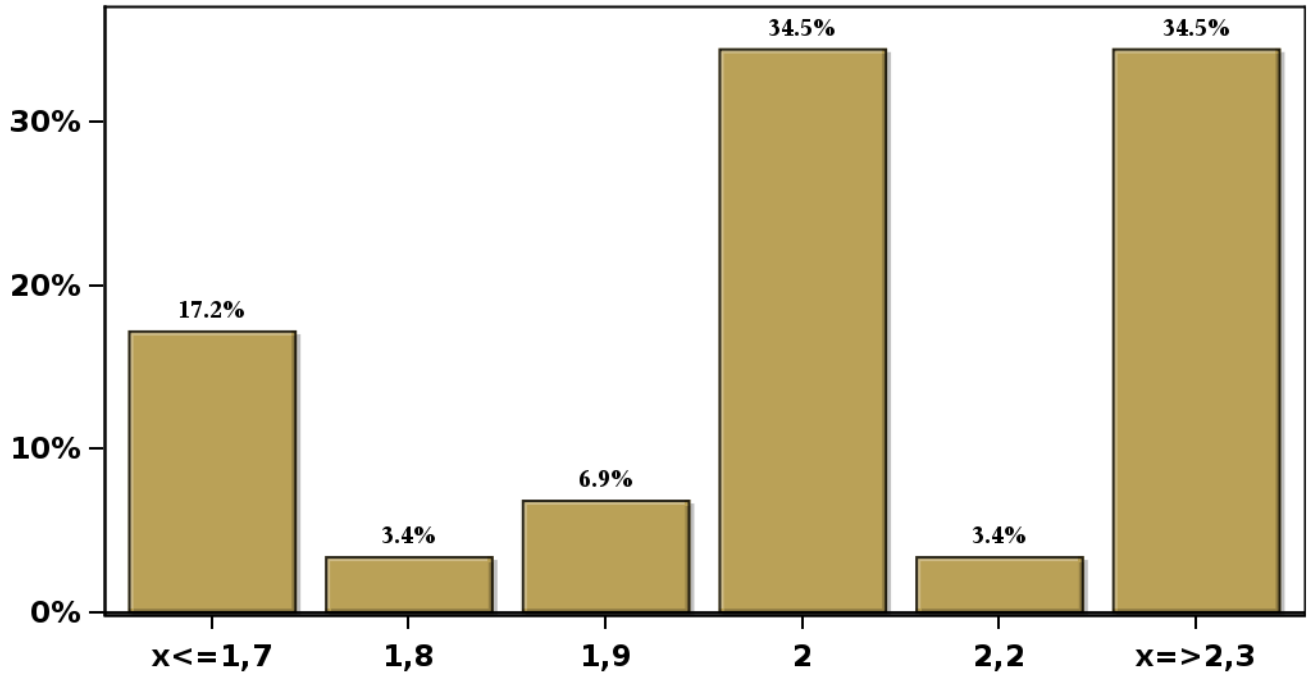


[Click to view summary table](#)

**Monthly Survey On Expectations February 2023
HFC including NPO year 2024 (12-month change)**

Answers: 29 Median: 2%

% Obs.



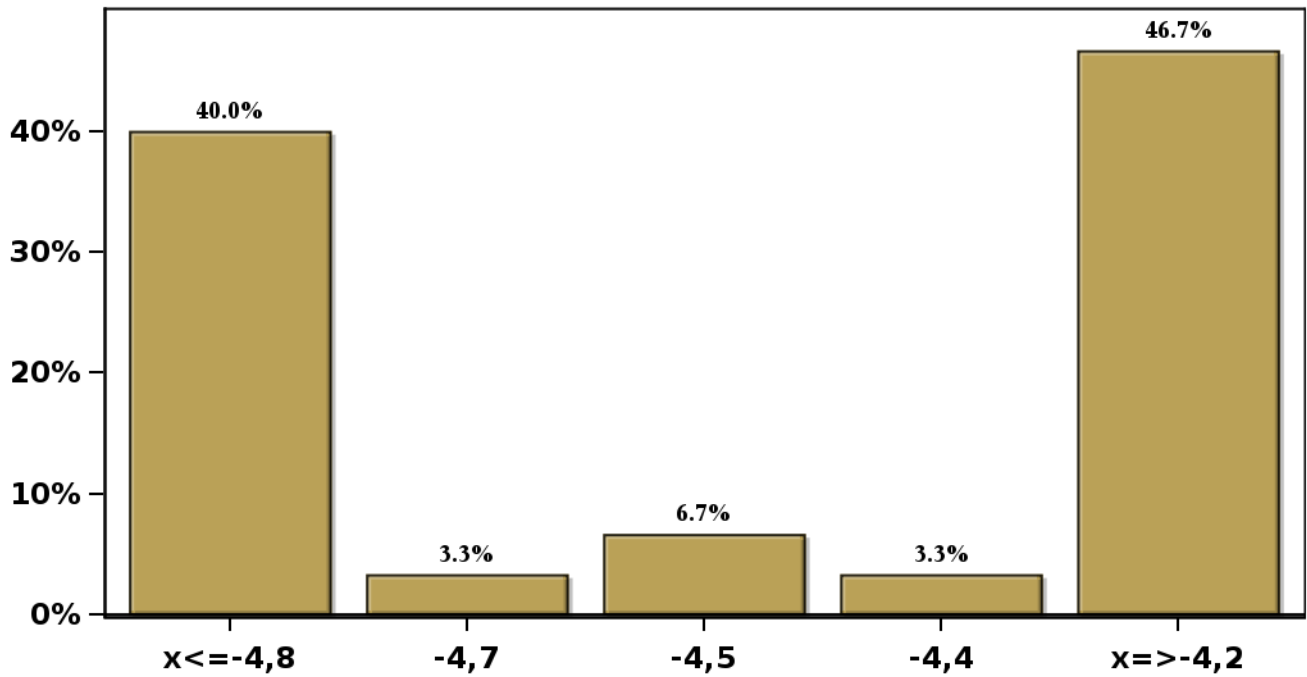
[Click to view summary table](#)

Monthly Survey On Expectations February 2023

GFCF year 2023 (12-month change)

Answers: 30 Median: -4,5%

% Obs.



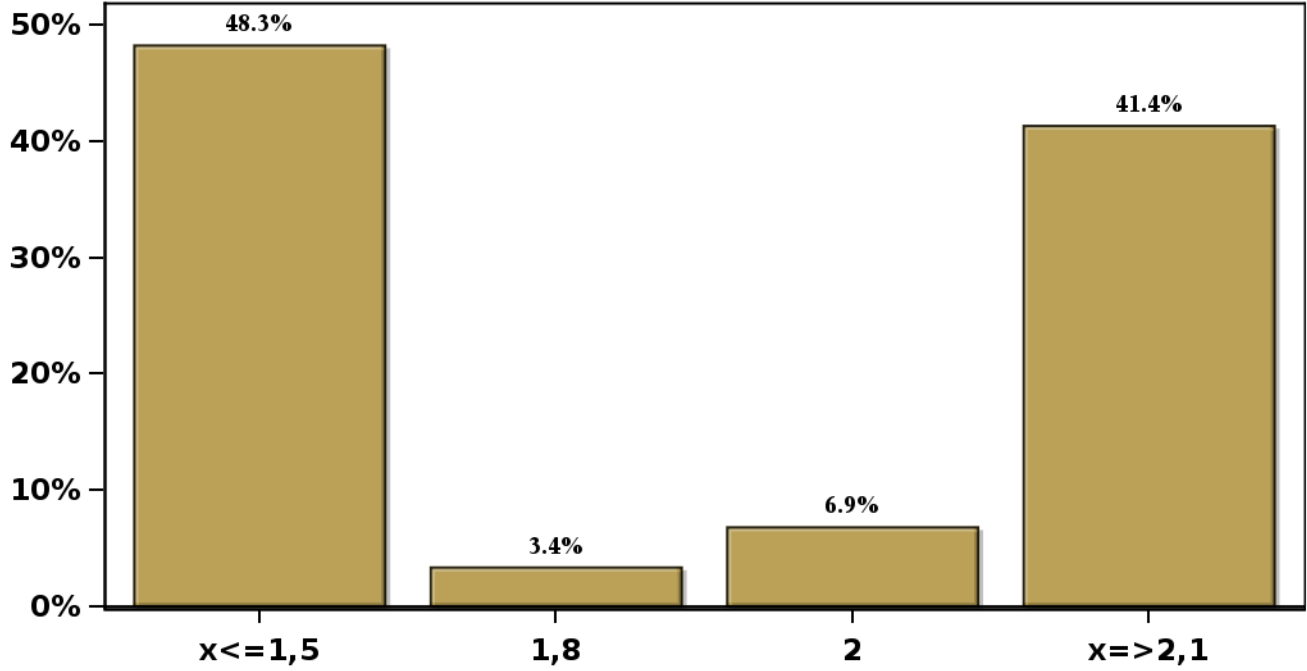
[Click to view summary table](#)

Monthly Survey On Expectations February 2023

GFCF year 2024 (12-month change)

Answers: 29 Median: 1,8%

% Obs.



[Click to view summary table](#)