

# MONTHLY SURVEY ON EXPECTATIONS January 2023

Sent on: 3 January 2023

Deadline for responses: 9 January 2023

Variable	Median	Decile 1	Decile 9	Answers	Graph
<b>01. Inflation (% change)</b>					
Current month (monthly change)	0,50	0,20	0,80	48	<a href="#">Graph1</a>
Next month (monthly change)	0,40	0,20	0,50	48	<a href="#">Graph2</a>
In eleven months (12-month change)	5,00	4,20	7,80	48	<a href="#">Graph3</a>
In twenty three months (12-month change)	3,30	3,00	4,30	48	<a href="#">Graph4</a>
In thirty five months (12-month change)	3,00	3,00	3,50	47	<a href="#">Graph5</a>
December 2023 (12-month change)	5,00	4,20	7,80	48	<a href="#">Graph6</a>
December 2024 (12-month change)	3,30	3,00	4,30	48	<a href="#">Graph7</a>
<b>02. Monetary Policy rate target (%) (*)</b>					
Following meeting	11,25	11,25	11,25	48	<a href="#">Graph8</a>
Second following meeting	10,75	10,25	11,25	47	<a href="#">Graph9</a>
In five months	10,00	8,50	10,75	48	<a href="#">Graph10</a>
December 2023	7,00	6,00	8,50	48	<a href="#">Graph11</a>
In eleven months	7,00	6,00	8,50	48	<a href="#">Graph12</a>
In seventeen months	5,50	4,25	7,00	47	<a href="#">Graph13</a>
In twenty three months	4,75	4,00	6,00	48	<a href="#">Graph14</a>
In thirty five months	4,00	3,25	5,00	47	<a href="#">Graph15</a>
<b>03. 5-Year BCU (%) (*)</b>					
In two months	2,00	1,60	2,80	34	<a href="#">Graph16</a>
In eleven months	2,00	1,20	2,60	34	<a href="#">Graph17</a>
In twenty three months forward	1,80	1,00	2,80	34	<a href="#">Graph18</a>
<b>04. 5-Year BCP (%) (*)</b>					
In two months	5,80	5,40	7,00	33	<a href="#">Graph19</a>
In eleven months	5,50	5,00	7,00	35	<a href="#">Graph20</a>
In twenty three months forward	5,20	4,20	6,50	35	<a href="#">Graph21</a>
<b>05. Exchange Rate (CH \$ per US\$ 1) (*)</b>					
In two months	850,00	830,00	900,00	47	<a href="#">Graph22</a>
In eleven months	840,00	800,00	900,00	48	<a href="#">Graph23</a>
In twenty three months forward	825,00	750,00	900,00	48	<a href="#">Graph24</a>
<b>06. IMACEC (Monthly Activity Index)</b>					
One month ago	-2,70	-3,80	-1,20	45	<a href="#">Graph25</a>
<b>07. IMACEC No Mining (monthly activity index)</b>					
One month ago	-2,90	-4,00	-1,60	38	<a href="#">Graph26</a>
<b>08. GDP (12-month change)</b>					
Within calendar quarter of the survey	-2,50	-4,00	-1,60	44	<a href="#">Graph27</a>
Year 2023	-1,50	-2,00	-0,80	46	<a href="#">Graph28</a>
Year 2024	2,10	1,50	2,60	45	<a href="#">Graph29</a>
Year 2025	2,20	1,50	3,30	42	<a href="#">Graph30</a>
<b>09. GDP No Mining (12-month change)</b>					
Within calendar quarter of the survey	-2,60	-5,00	-1,60	37	<a href="#">Graph31</a>
Year 2023	-1,80	-2,50	-0,50	37	<a href="#">Graph32</a>
Year 2024	2,40	1,20	3,00	36	<a href="#">Graph33</a>
Year 2025	2,20	1,50	3,50	35	<a href="#">Graph34</a>
<b>10. HFC including NPO (12-month change)</b>					
Year 2023	-4,20	-6,00	2,00	36	<a href="#">Graph35</a>
Year 2024	2,00	-2,00	3,10	34	<a href="#">Graph36</a>
<b>11. GFCF (12-month change)</b>					
Year 2023	-4,50	-7,50	-0,20	36	<a href="#">Graph37</a>
Year 2024	1,80	-3,50	4,20	34	<a href="#">Graph38</a>

(\*) End of the month.

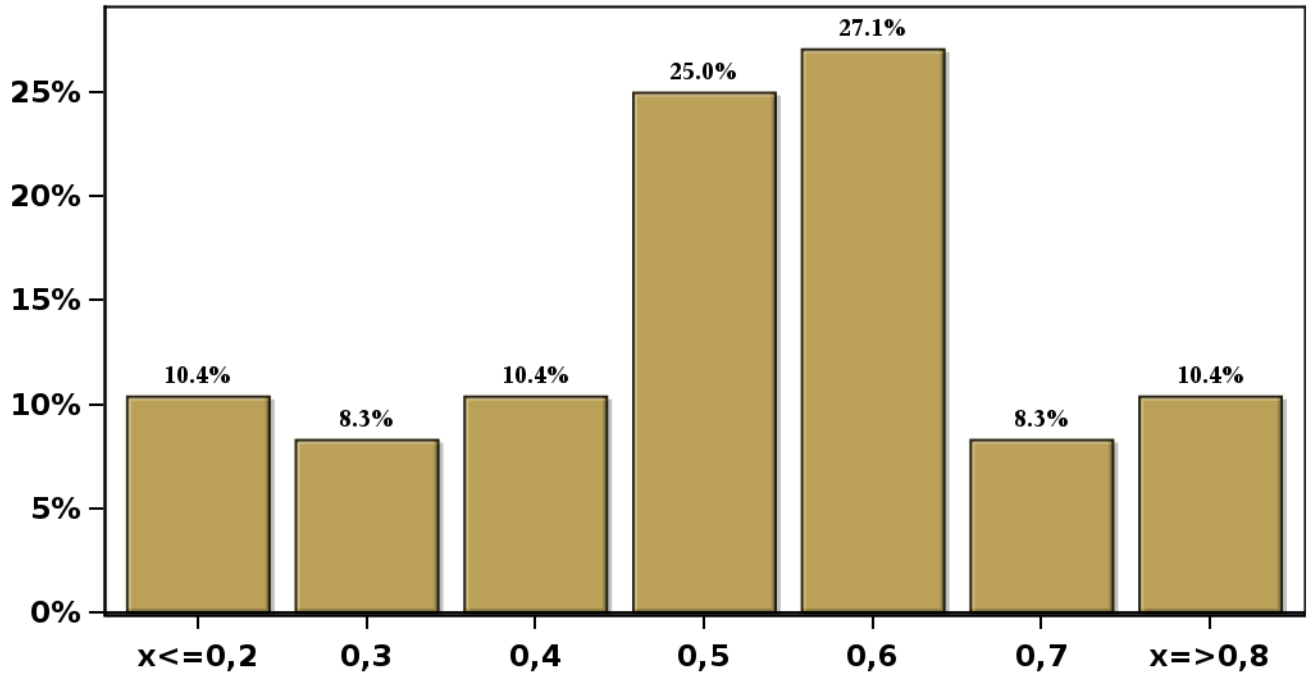
Monthly survey of selected academics, consultants, and executives or advisors of financial institutions and corporations. It is completed the day after the publication of the CPI and it is published the day after its reception, at 8:30 hrs. approximately ([www.bcentral.cl](http://www.bcentral.cl), Statistics section, Economic Surveys, Website: <https://www.bcentral.cl/en/areas/economic-surveys>)  
The survey period comprises the week prior to publication

# Monthly Survey On Expectations January 2023

## Inflation current month (monthly change)

Answers: 48 Median: 0,5%

% Obs.



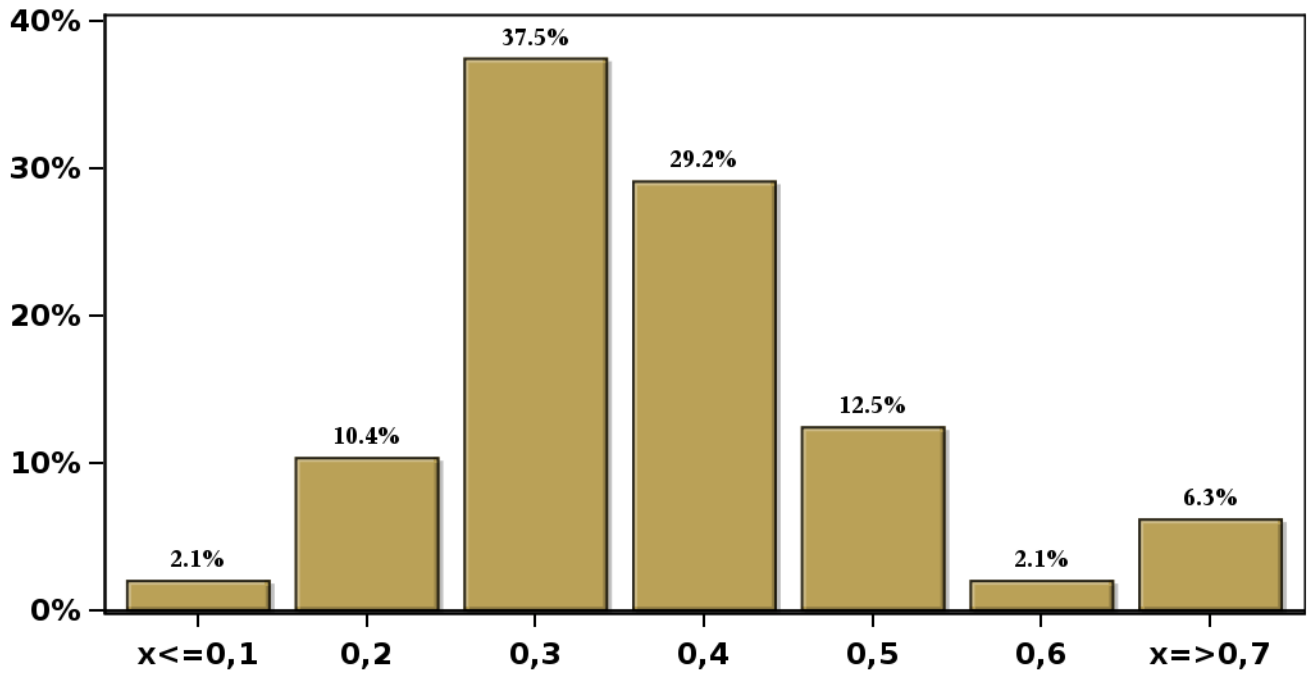
[Click to view summary table](#)

# Monthly Survey On Expectations January 2023

## Inflation next month (monthly change)

Answers: 48 Median: 0,4%

% Obs.

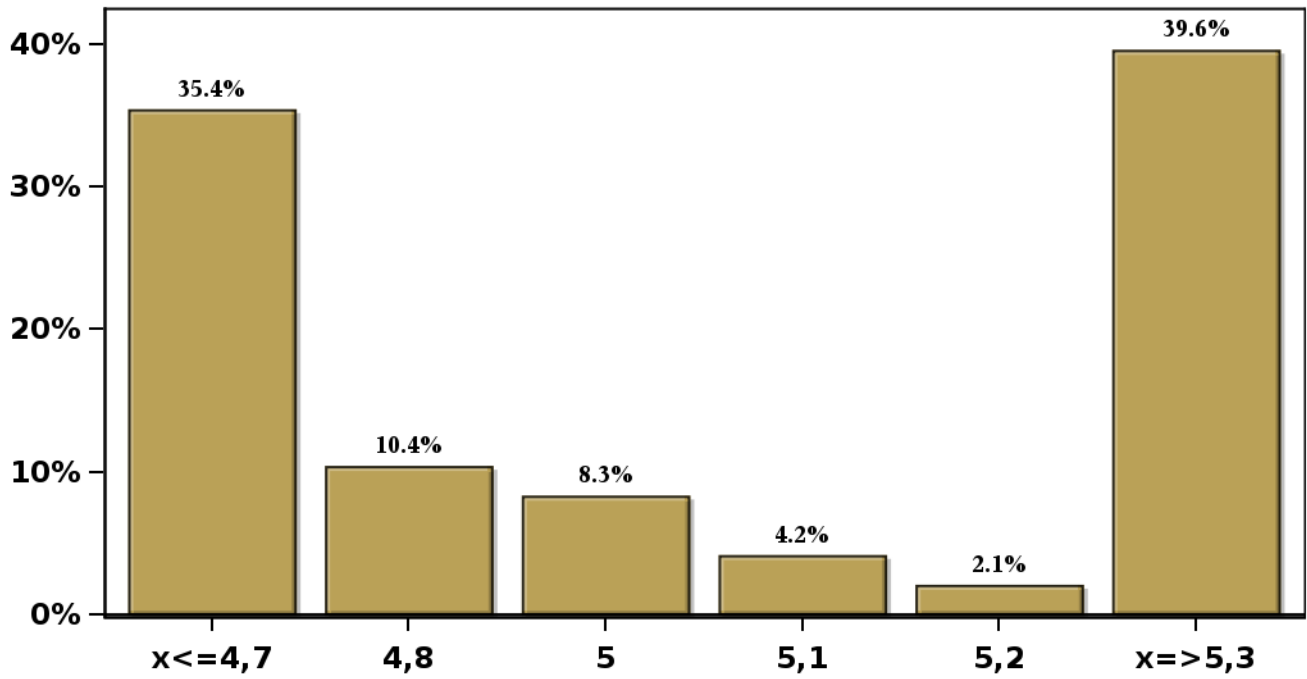


[Click to view summary table](#)

**Monthly Survey On Expectations January 2023**  
**Inflation in eleven months (12-month change)**

**Answers: 48 Median: 5%**

**% Obs.**

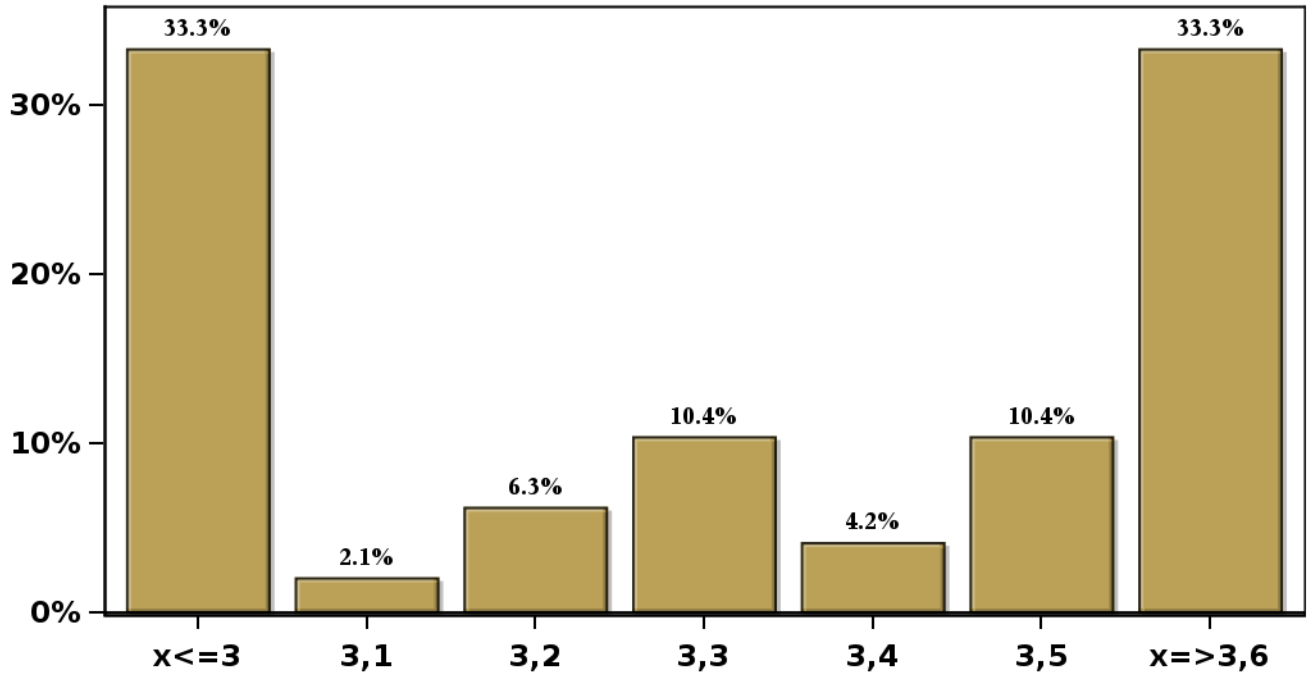


[Click to view summary table](#)

**Monthly Survey On Expectations January 2023**  
**Inflation in twenty three months (12-month change)**

**Answers: 48 Median: 3,3%**

**% Obs.**

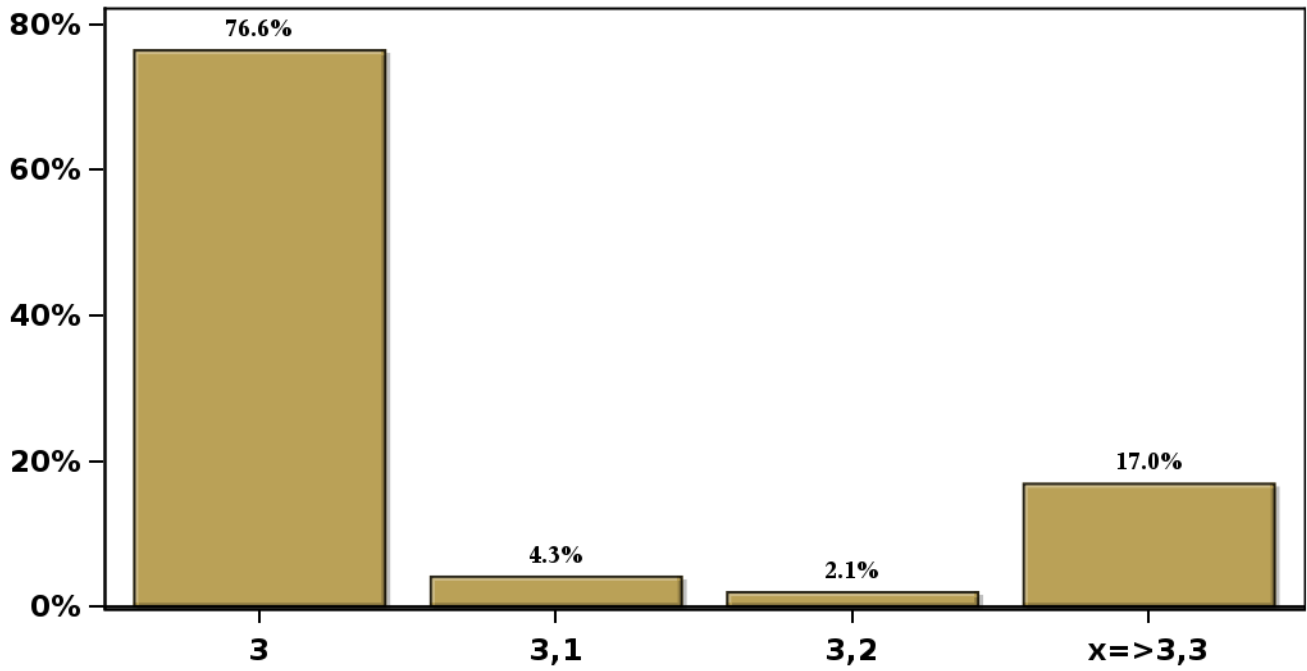


[Click to view summary table](#)

**Monthly Survey On Expectations January 2023**  
**Inflation in thirty five months (12-month change)**

**Answers: 47 Median: 3%**

**% Obs.**

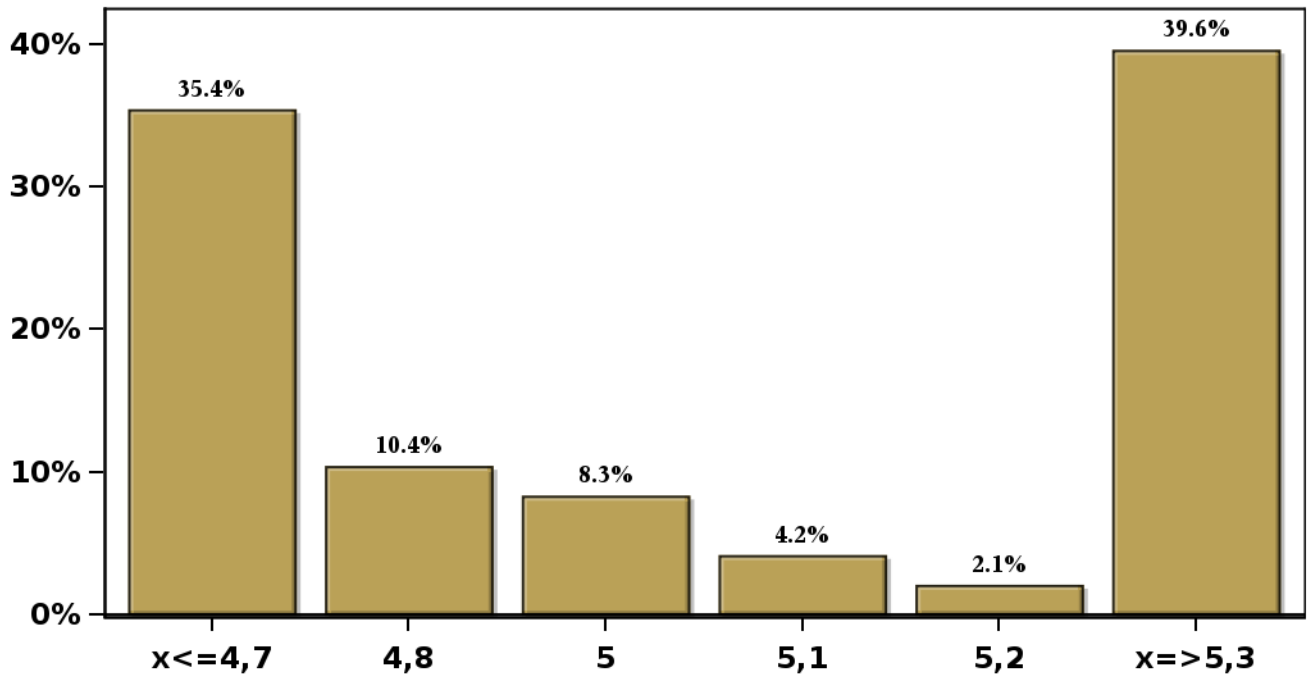


[Click to view summary table](#)

**Monthly Survey On Expectations January 2023  
Inflation december 2023 ( 12-month change )**

**Answers: 48 Median: 5%**

**% Obs.**

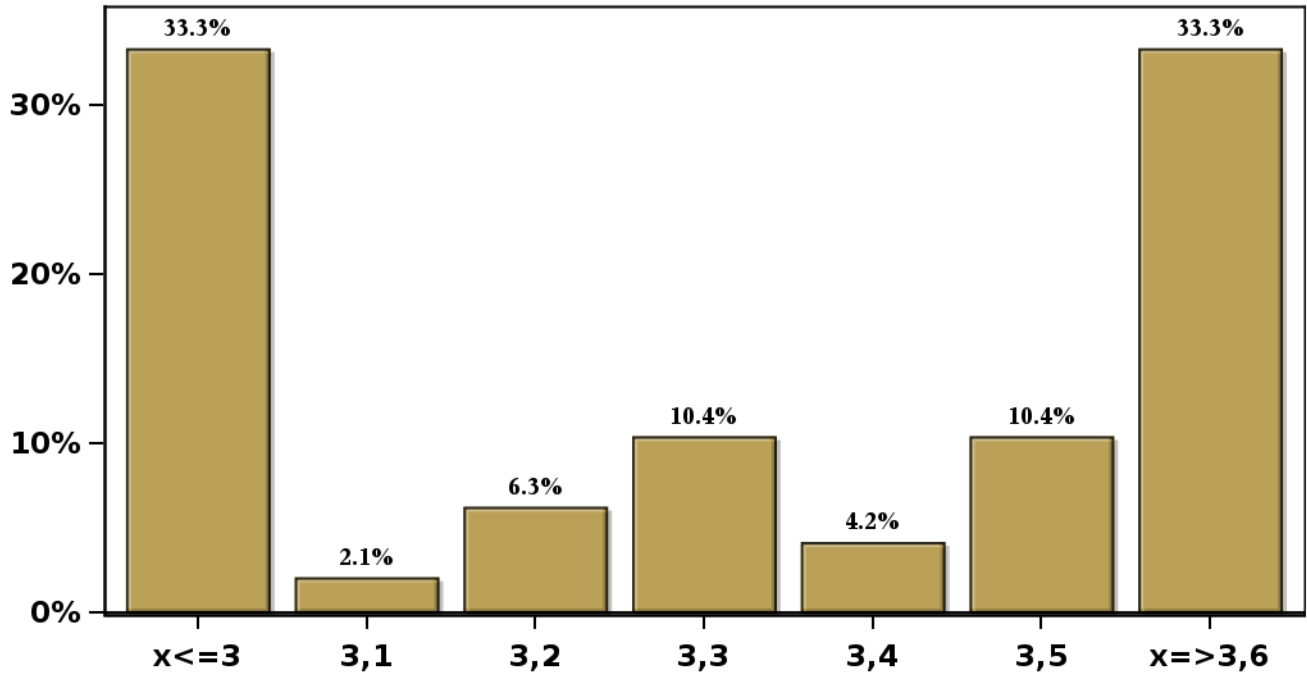


[Click to view summary table](#)

**Monthly Survey On Expectations January 2023  
Inflation december 2024 ( 12-month change )**

**Answers: 48 Median: 3,3%**

**% Obs.**



[Click to view summary table](#)

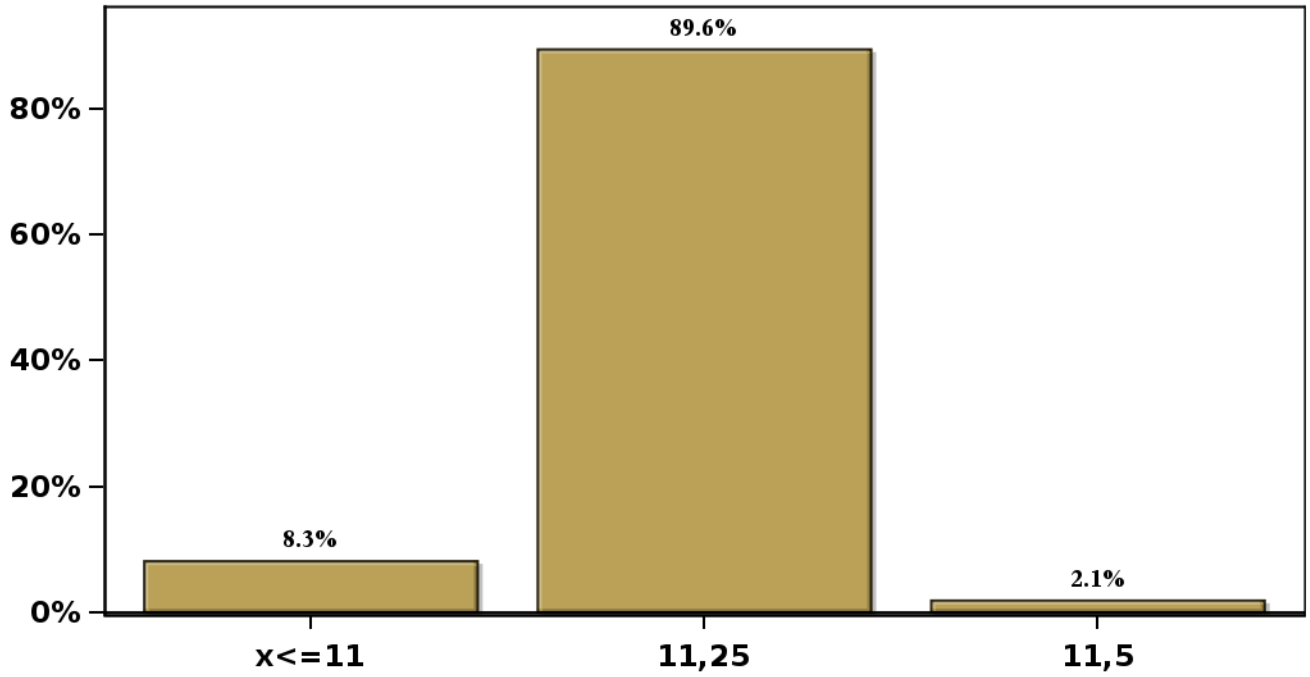


# Monthly Survey On Expectations January 2023

## Monetary Policy rate target following meeting

Answers: 48 Median: 11,25%

% Obs.

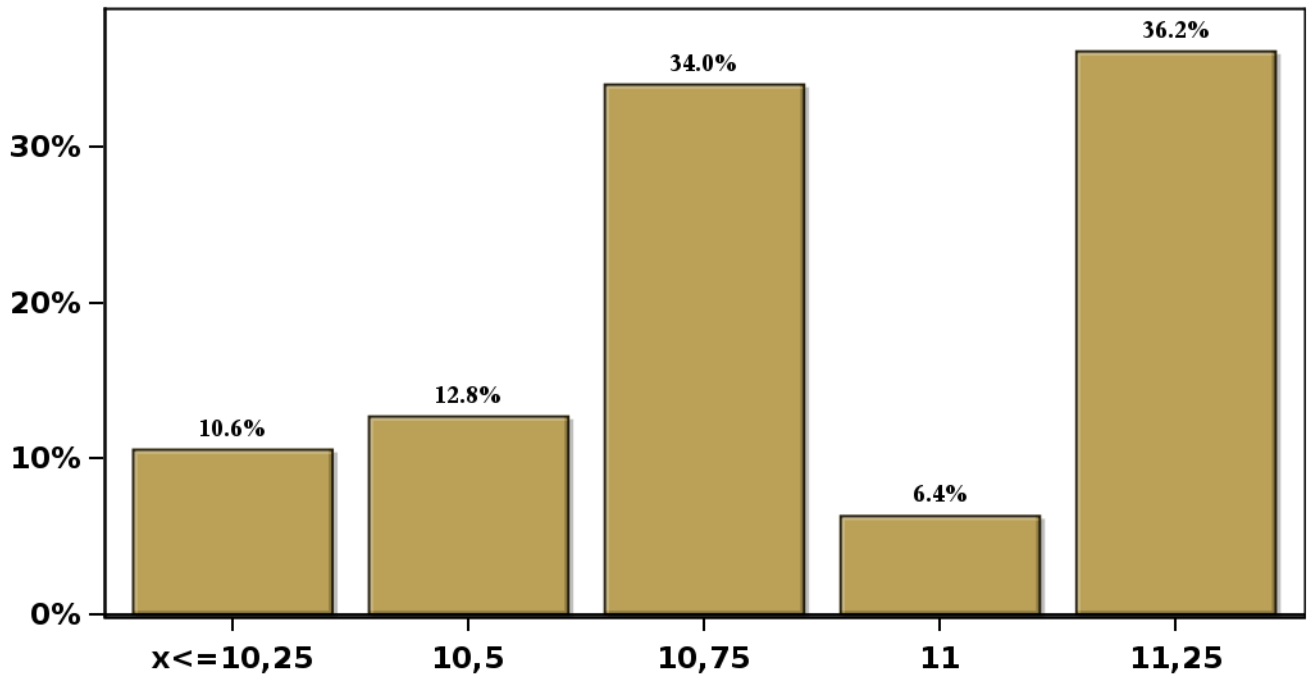


[Click to view summary table](#)

**Monthly Survey On Expectations January 2023**  
**Monetary Policy rate target second following meeting**

**Answers: 47 Median: 10,75%**

**% Obs.**



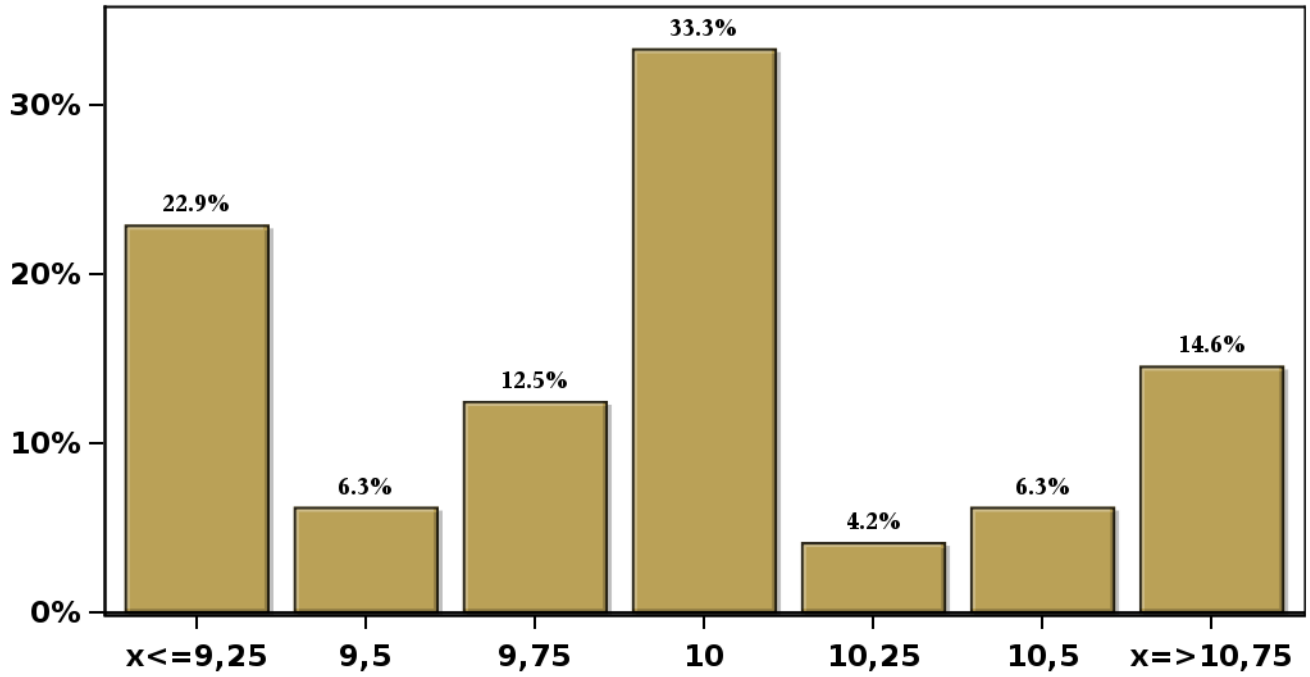
[Click to view summary table](#)

# Monthly Survey On Expectations January 2023

## Monetary Policy rate target In five months

Answers: 48 Median: 10%

% Obs.



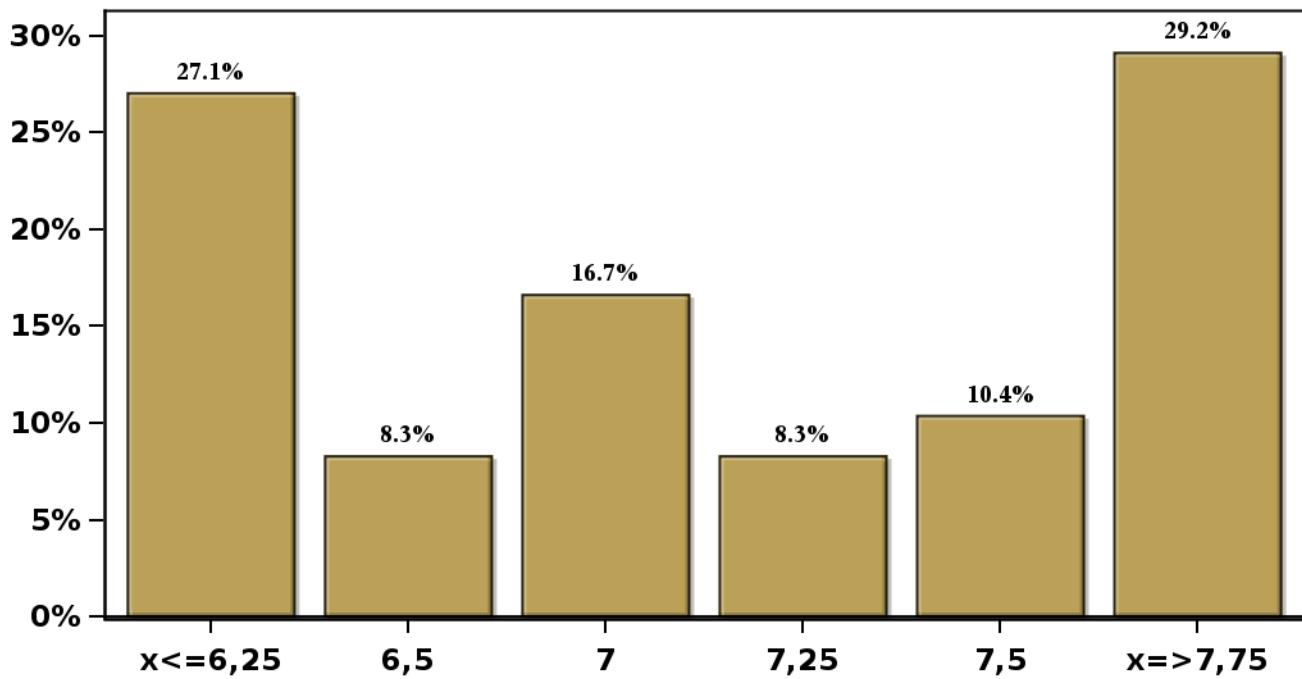
[Click to view summary table](#)

### Monthly Survey On Expectations January 2023

### Monetary Policy rate target december 2023

Answers: 48 Median: 7%

% Obs.



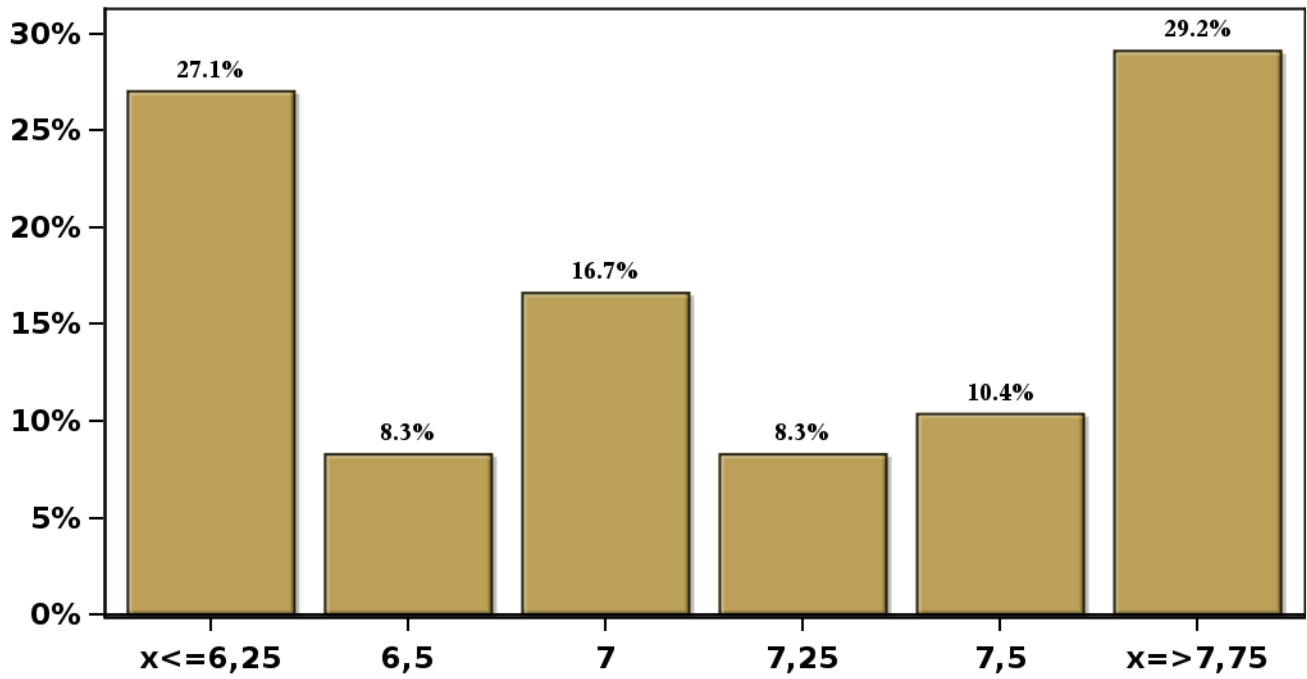
[Click to view summary table](#)

# Monthly Survey On Expectations January 2023

## Monetary Policy rate target in eleven months

Answers: 48 Median: 7%

% Obs.

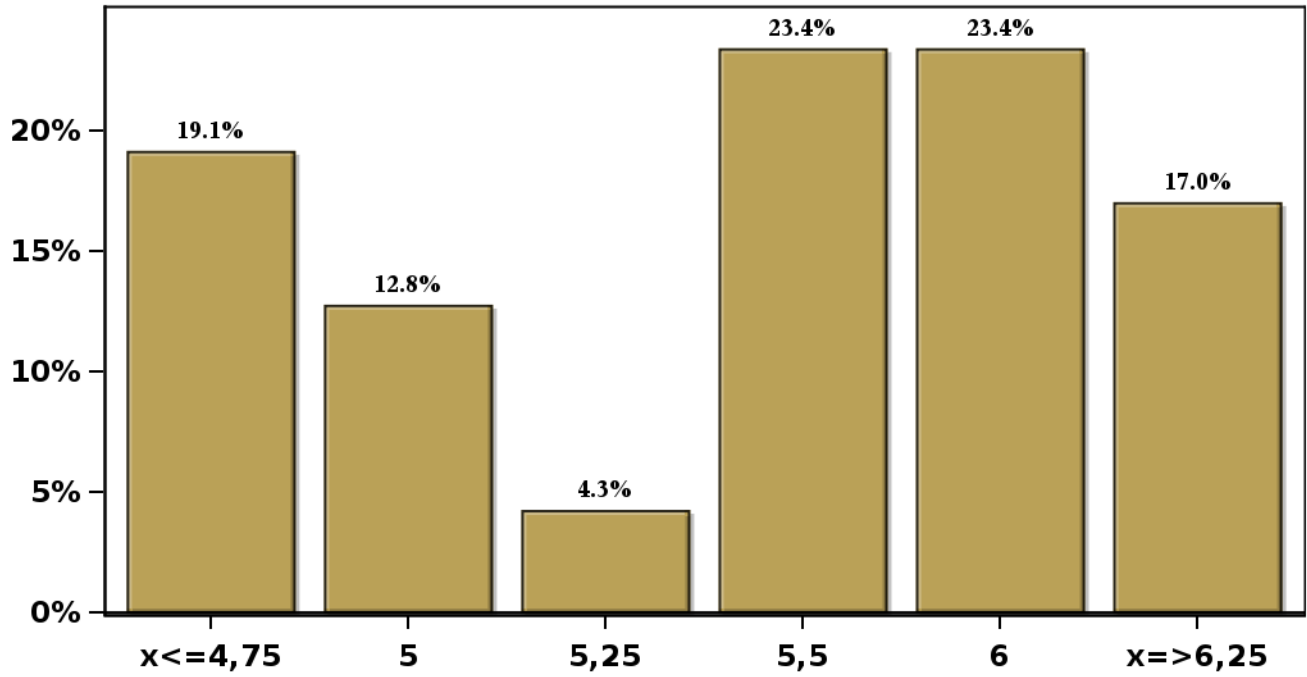


[Click to view summary table](#)

**Monthly Survey On Expectations January 2023**  
**Monetary Policy rate target in seventeen months**

**Answers: 47 Median: 5,5%**

**% Obs.**

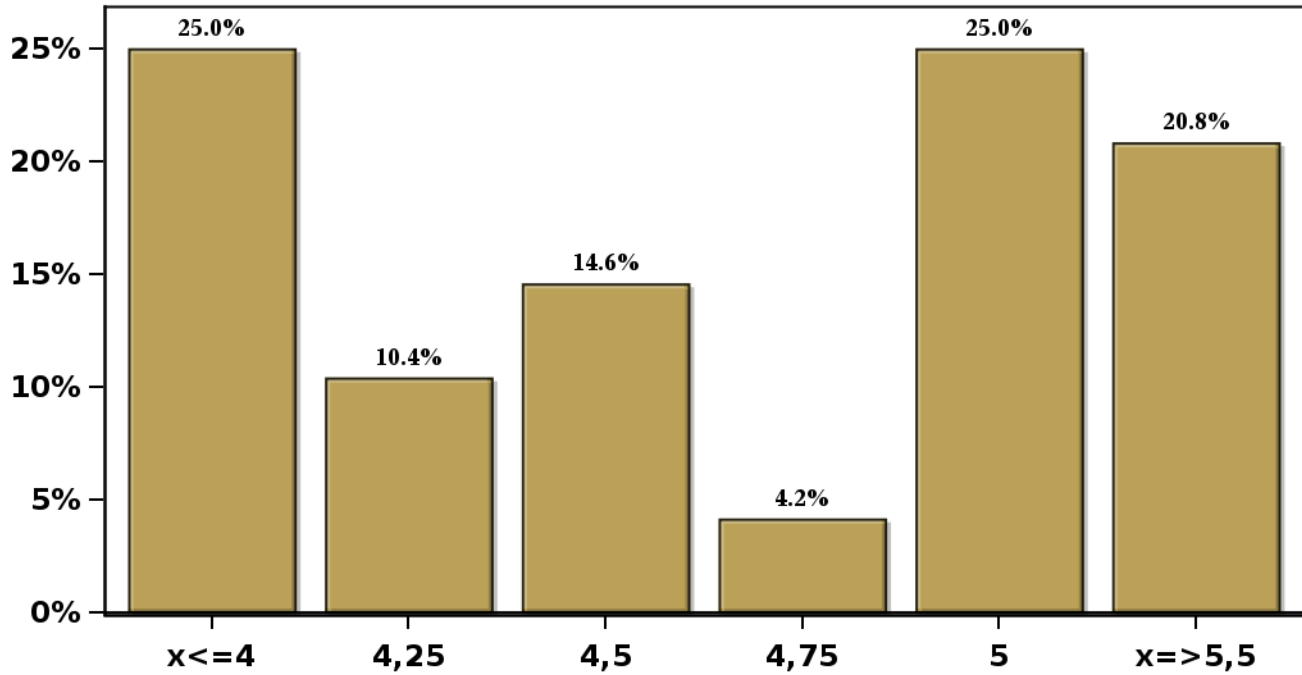


[Click to view summary table](#)

**Monthly Survey On Expectations January 2023**  
**Monetary Policy rate target in twenty three months**

**Answers: 48 Median: 4,75%**

**% Obs.**

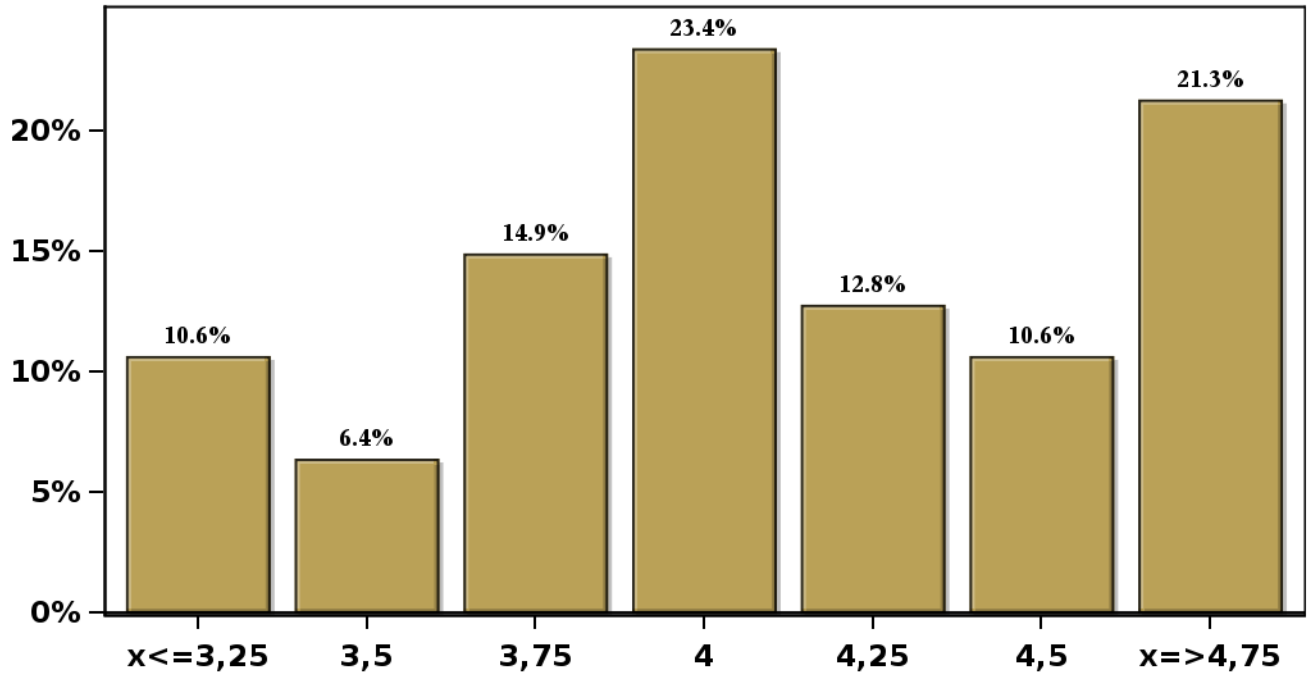


[Click to view summary table](#)

**Monthly Survey On Expectations January 2023**  
**Monetary Policy rate target in thirty five months**

**Answers: 47 Median: 4%**

**% Obs.**



[Click to view summary table](#)

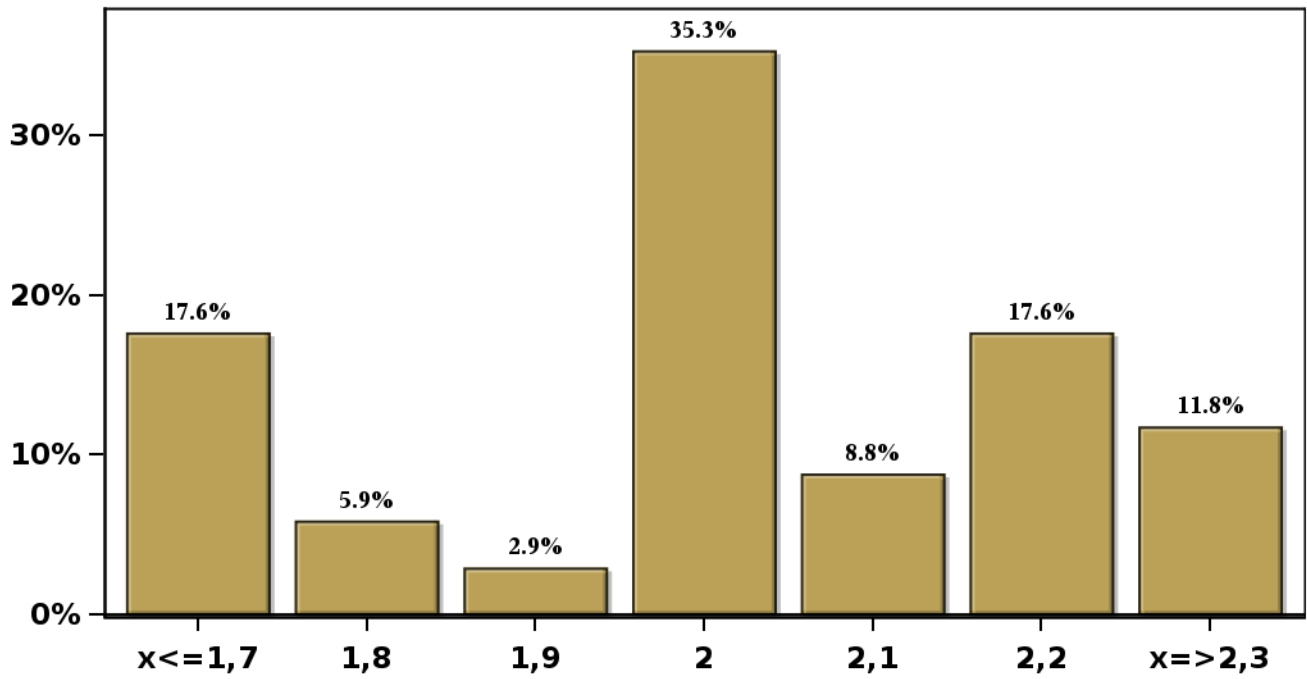


# Monthly Survey On Expectations January 2023

## 5-Year BCU In two months

Answers: 34 Median: 2%

% Obs.



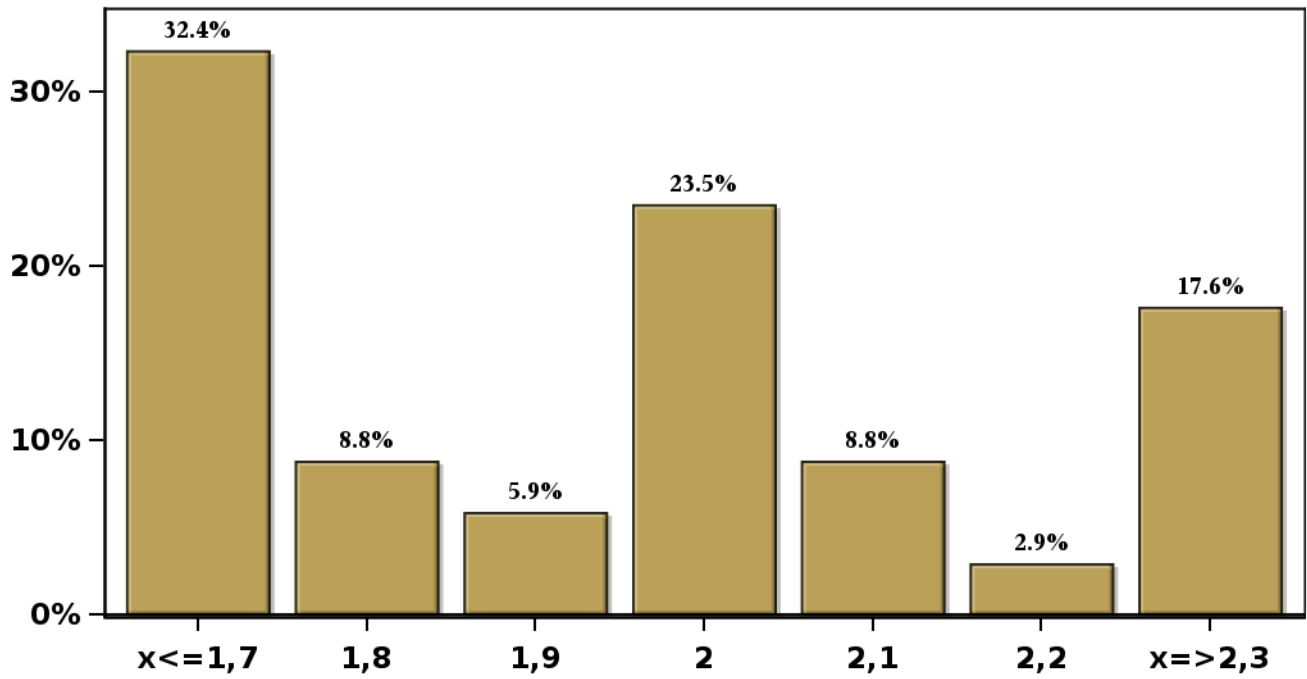
[Click to view summary table](#)

# Monthly Survey On Expectations January 2023

## 5-Year BCU in eleven months

Answers: 34 Median: 2%

% Obs.



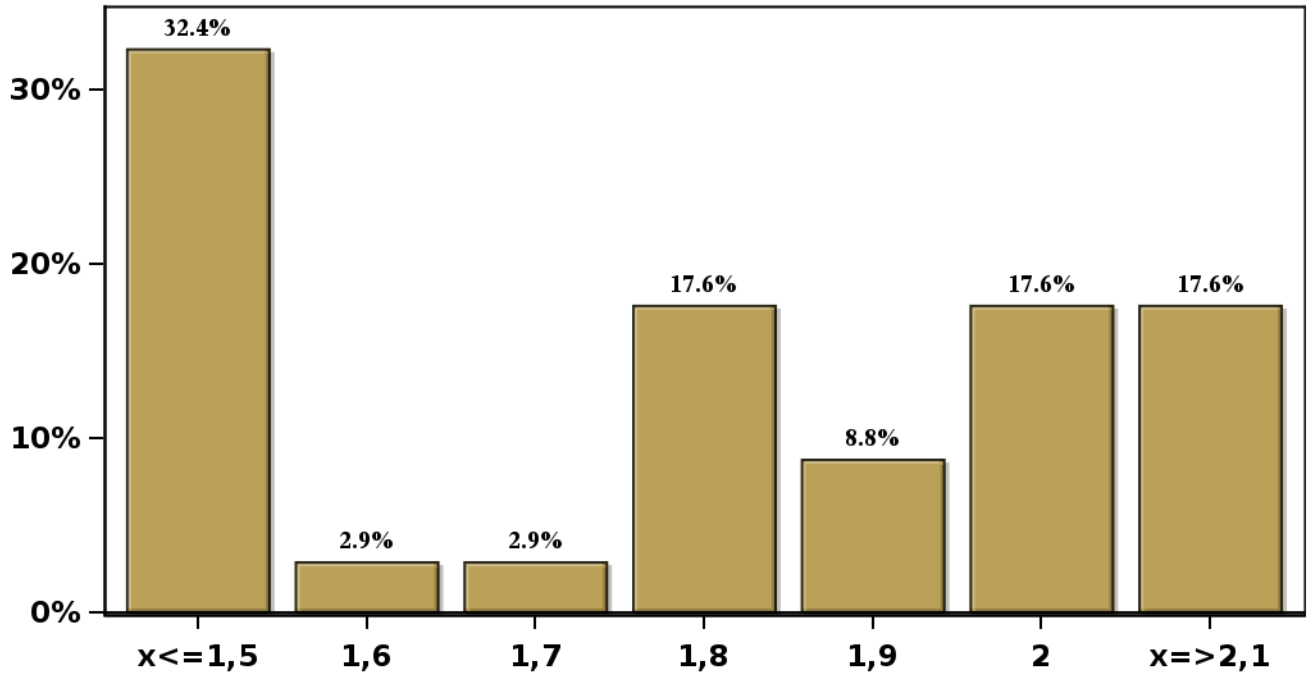
[Click to view summary table](#)

# Monthly Survey On Expectations January 2023

## 5-Year BCU in twenty three months forward

Answers: 34 Median: 1,8%

% Obs.



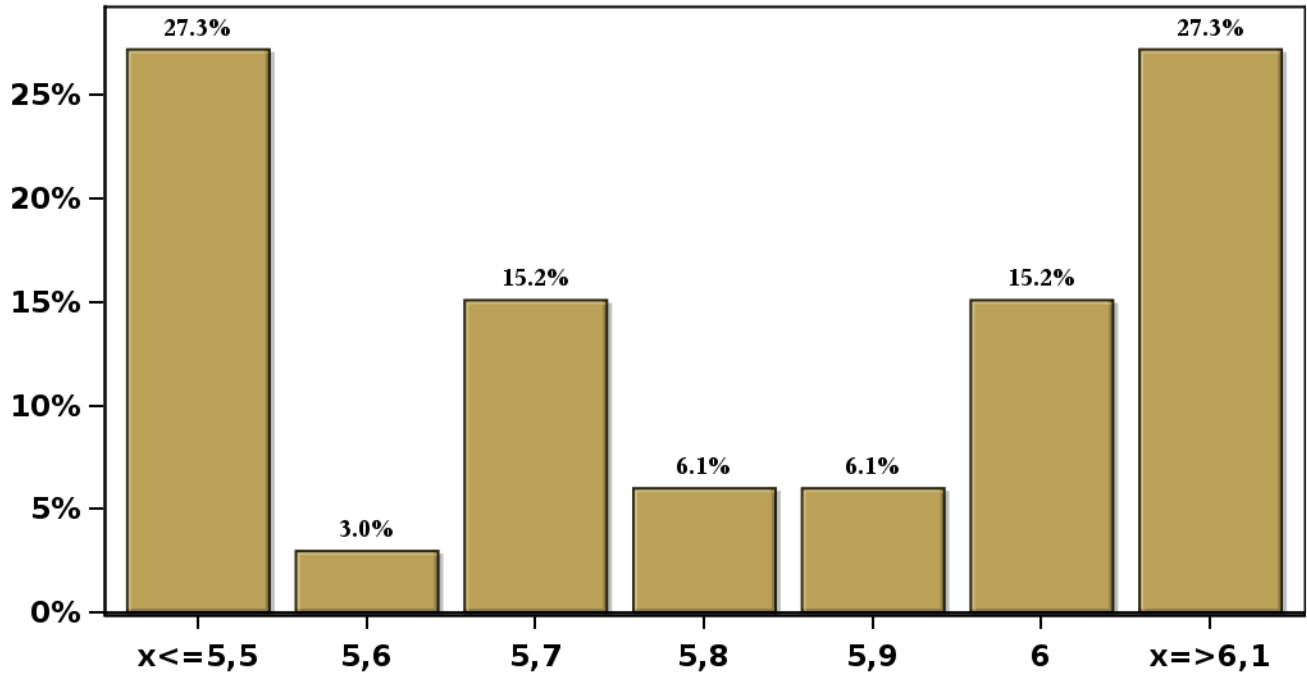
[Click to view summary table](#)

# Monthly Survey On Expectations January 2023

## 5-Year BCP in two months

Answers: 33 Median: 5,8%

% Obs.



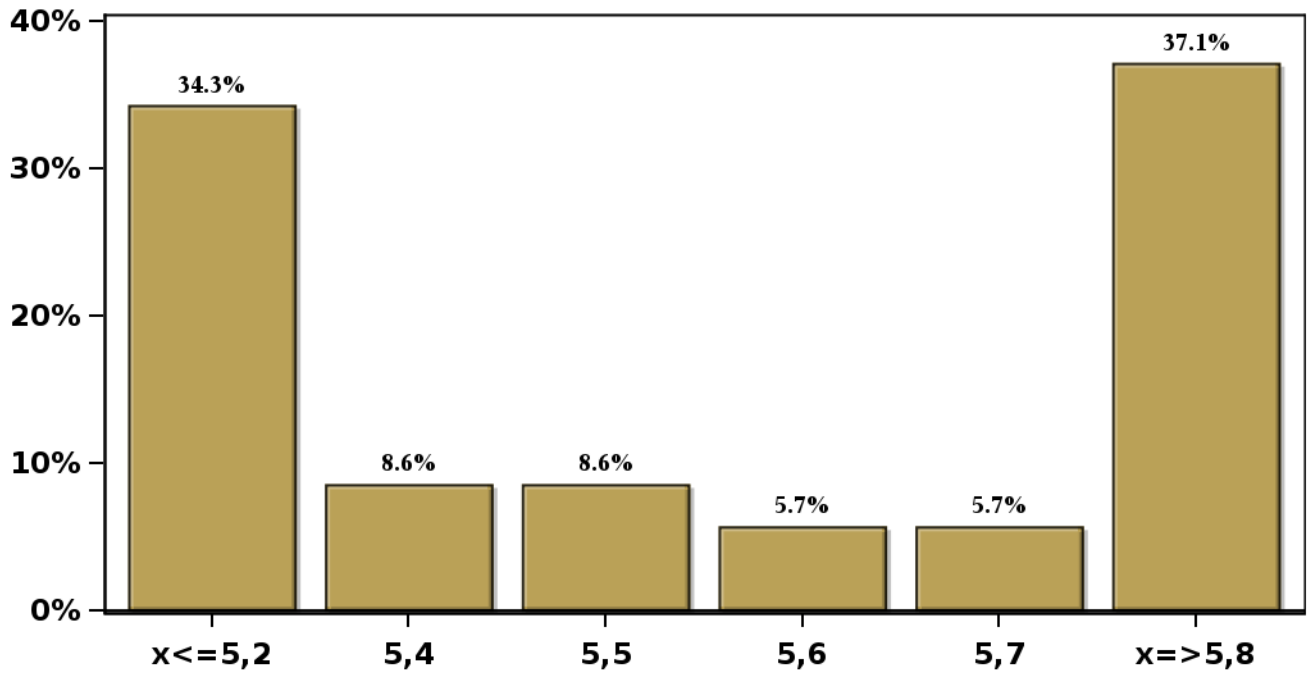
[Click to view summary table](#)

# Monthly Survey On Expectations January 2023

## 5-Year BCP in eleven months

Answers: 35 Median: 5,5%

% Obs.



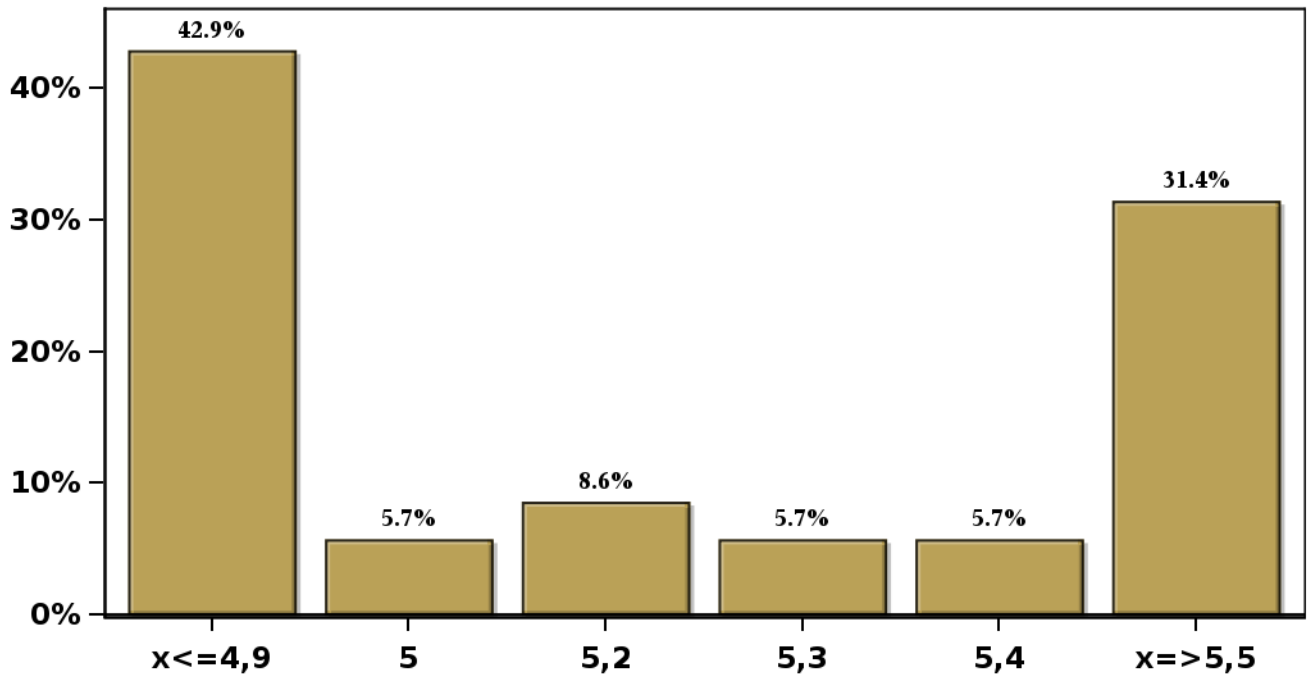
[Click to view summary table](#)

# Monthly Survey On Expectations January 2023

## 5-Year BCP in twenty three months forward

Answers: 35 Median: 5,2%

% Obs.

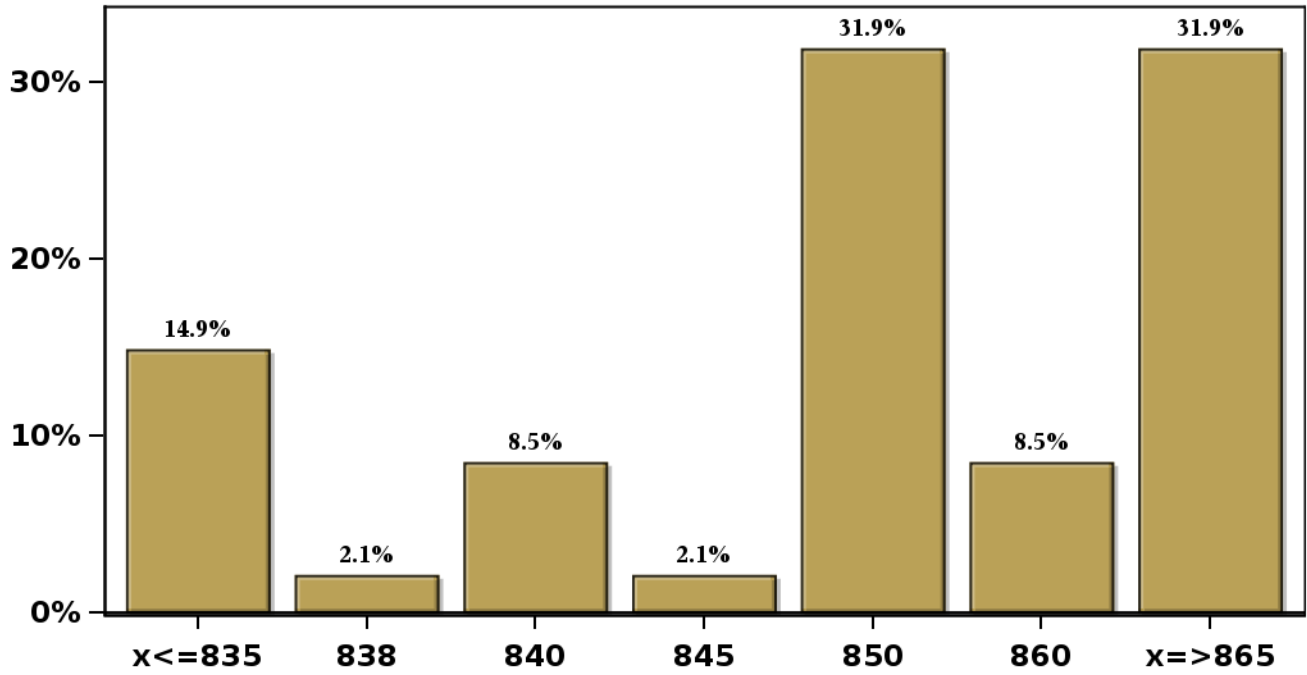


[Click to view summary table](#)

**Monthly Survey On Expectations January 2023**  
**Exchange Rate in two months (CH \$ per US\$)**

**Answers: 47 Median: \$850**

**% Obs.**

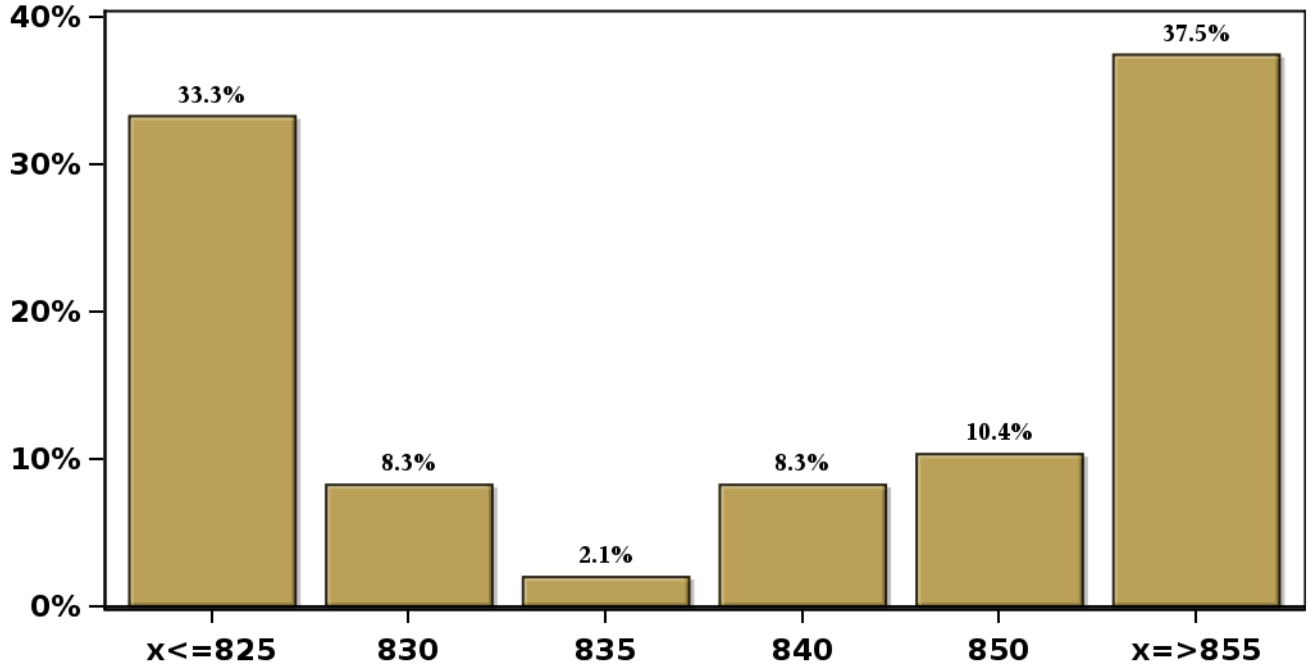


[Click to view summary table](#)

**Monthly Survey On Expectations January 2023**  
**Exchange Rate in eleven months (CH \$ per US\$)**

**Answers: 48 Median: \$840**

**% Obs.**



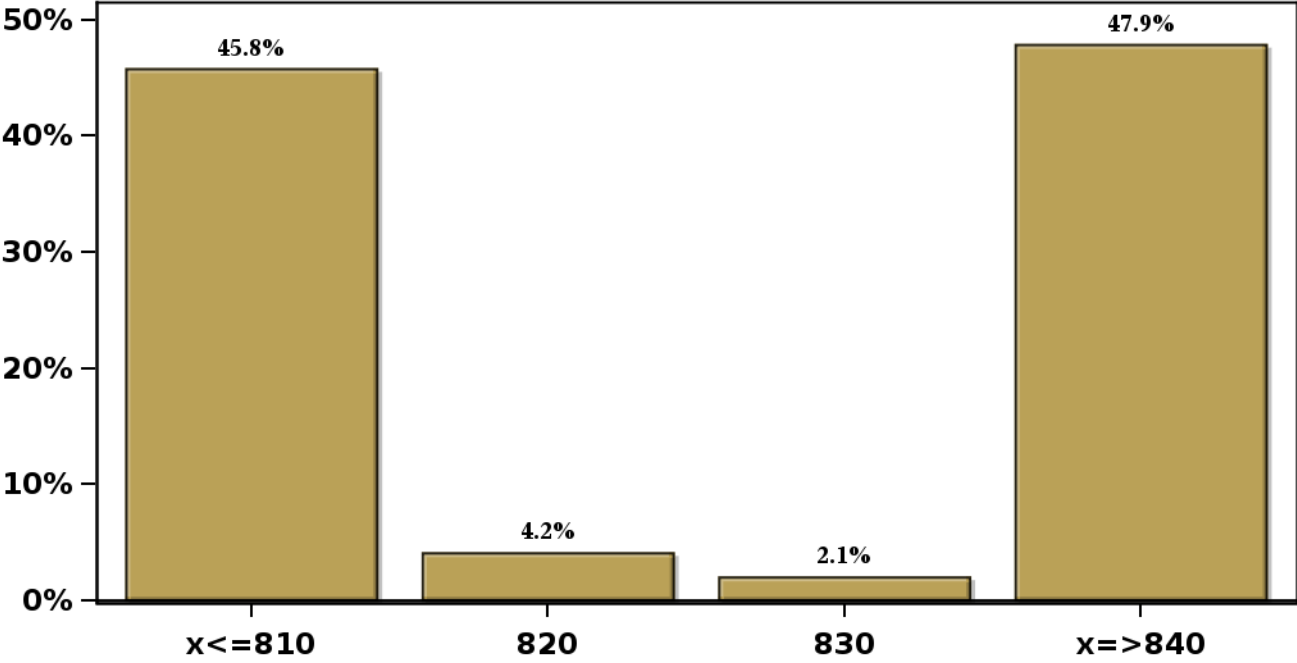
[Click to view summary table](#)



**Monthly Survey On Expectations January 2023**  
**Exchange Rate in twenty three months forward (CH \$ per US\$)**

**Answers: 48 Median: \$825**

**% Obs.**

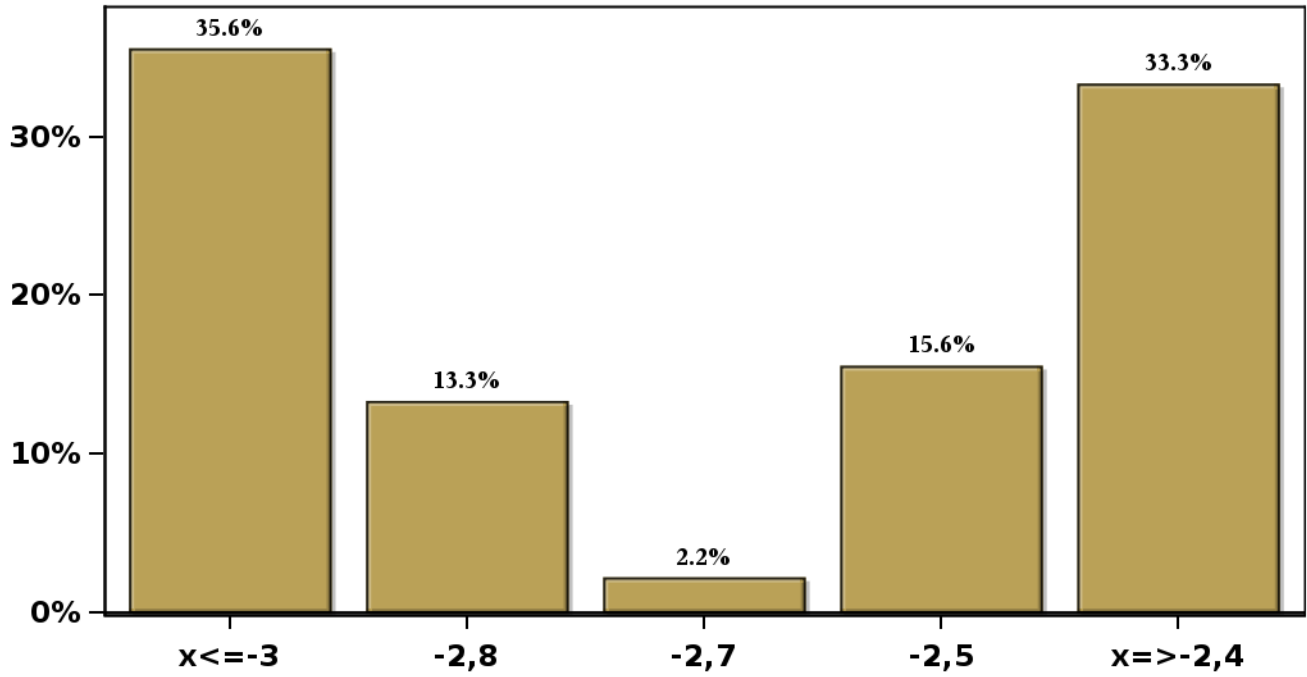


[Click to view summary table](#)

**Monthly Survey On Expectations January 2023**  
**IMACEC (Monthly Activity Index) one month ago**

**Answers: 45 Median: -2,7%**

**% Obs.**

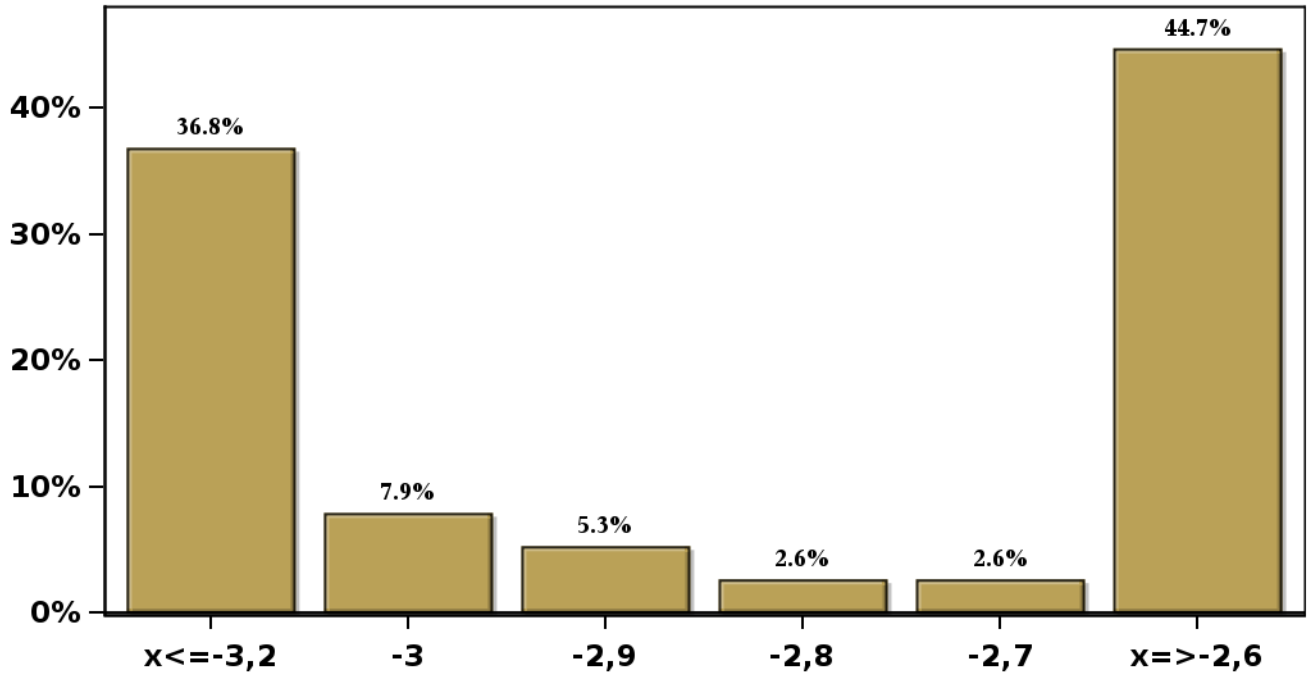


[Click to view summary table](#)

**Monthly Survey On Expectations January 2023**  
**IMACEC No Mining (Monthly Activity Index) one month ago**

**Answers: 38 Median: -2,9%**

**% Obs.**



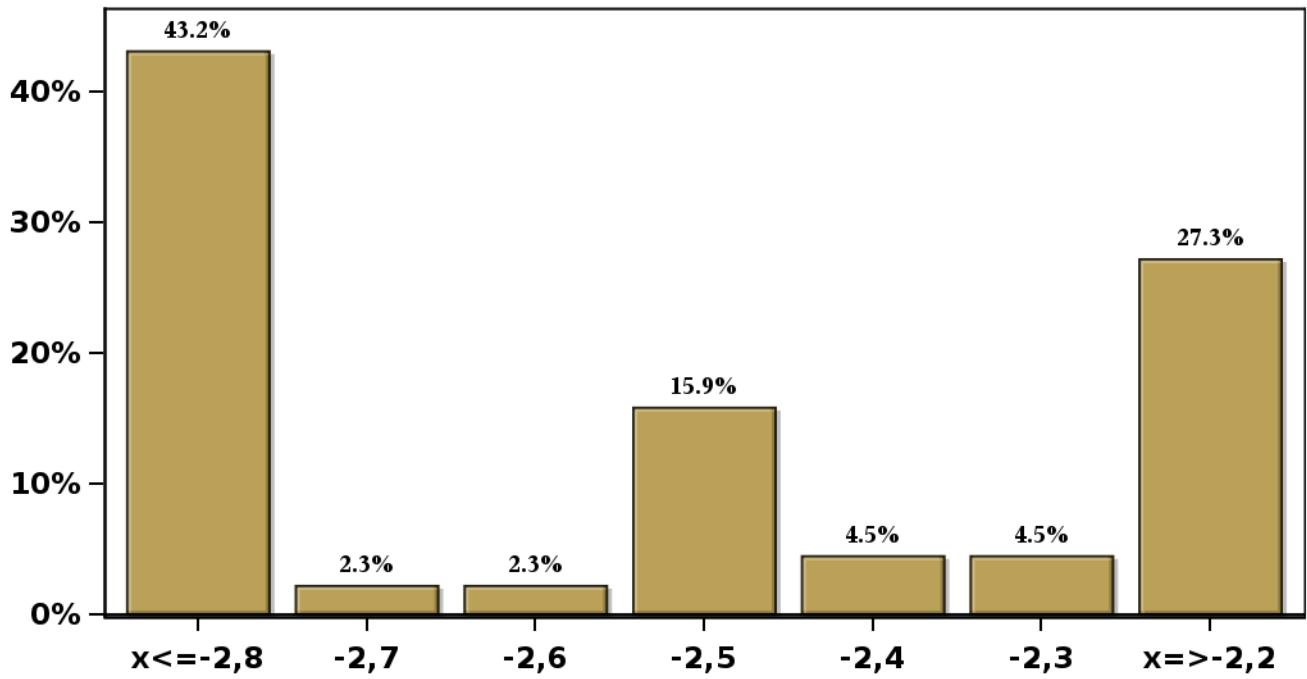
[Click to view summary table](#)

# Monthly Survey On Expectations January 2023

GDP within calendar quarter of the survey

Answers: 44 Median: -2,5%

% Obs.



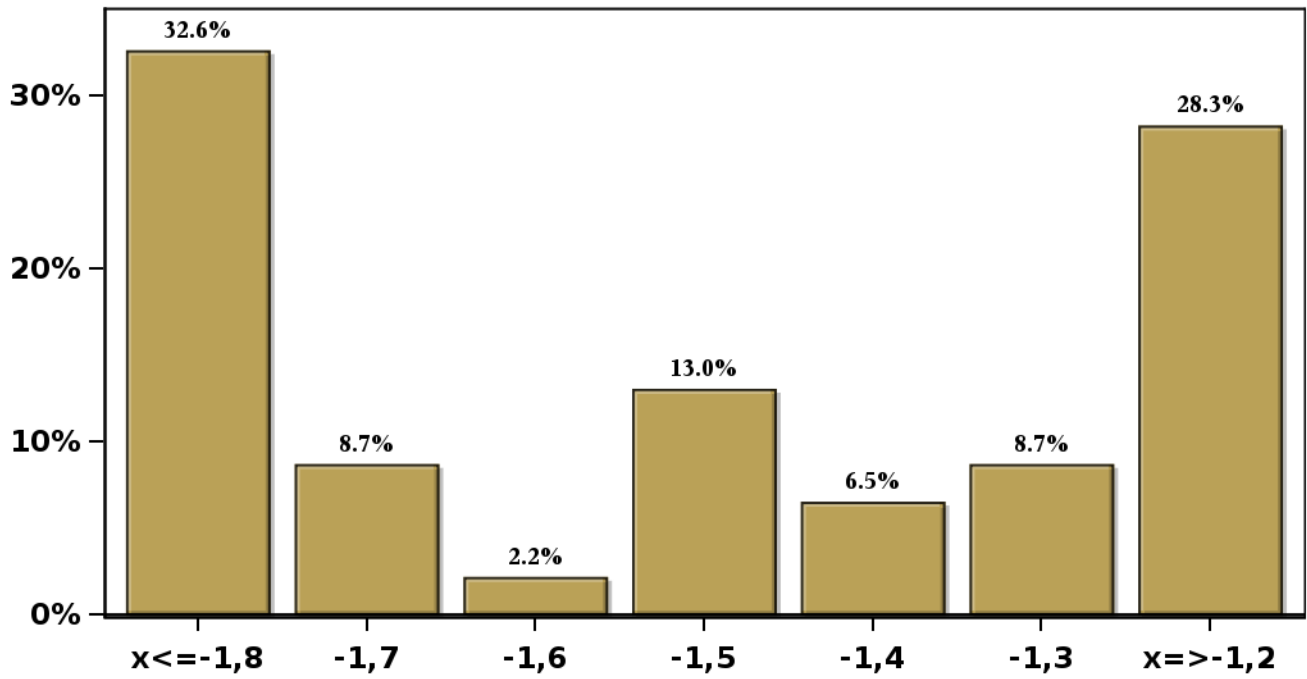
[Click to view summary table](#)

### Monthly Survey On Expectations January 2023

GDP year 2023 (12-month change)

Answers: 46 Median: -1,5%

% Obs.

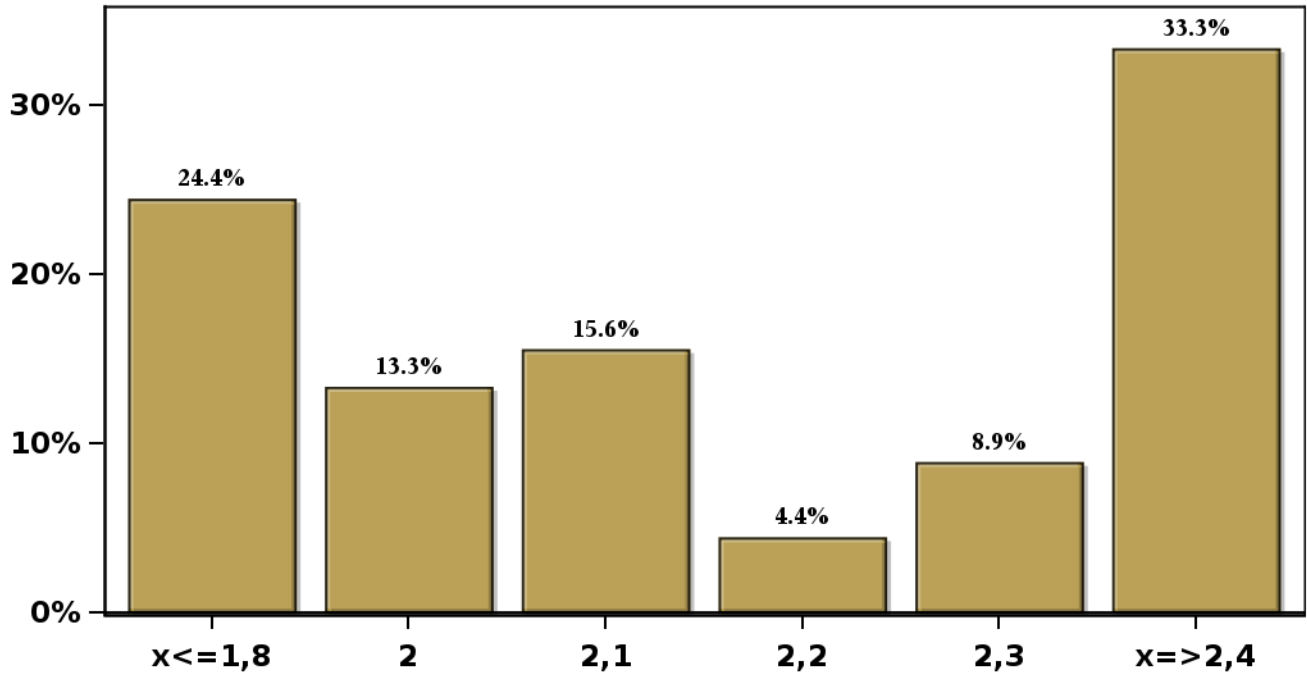


[Click to view summary table](#)

**Monthly Survey On Expectations January 2023**  
**GDP year 2024 (12-month change)**

**Answers: 45 Median: 2,1%**

**% Obs.**



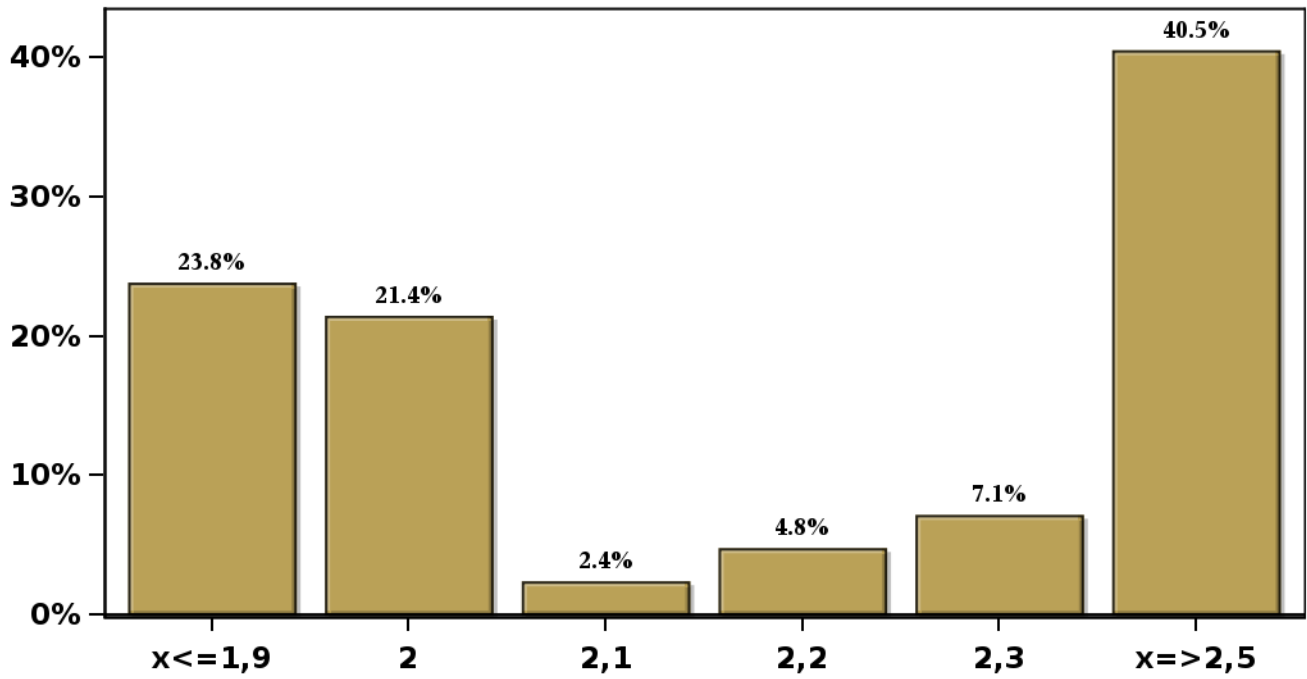
[Click to view summary table](#)

## Monthly Survey On Expectations January 2023

GDP year 2025 (12-month change)

Answers: 42 Median: 2,2%

% Obs.

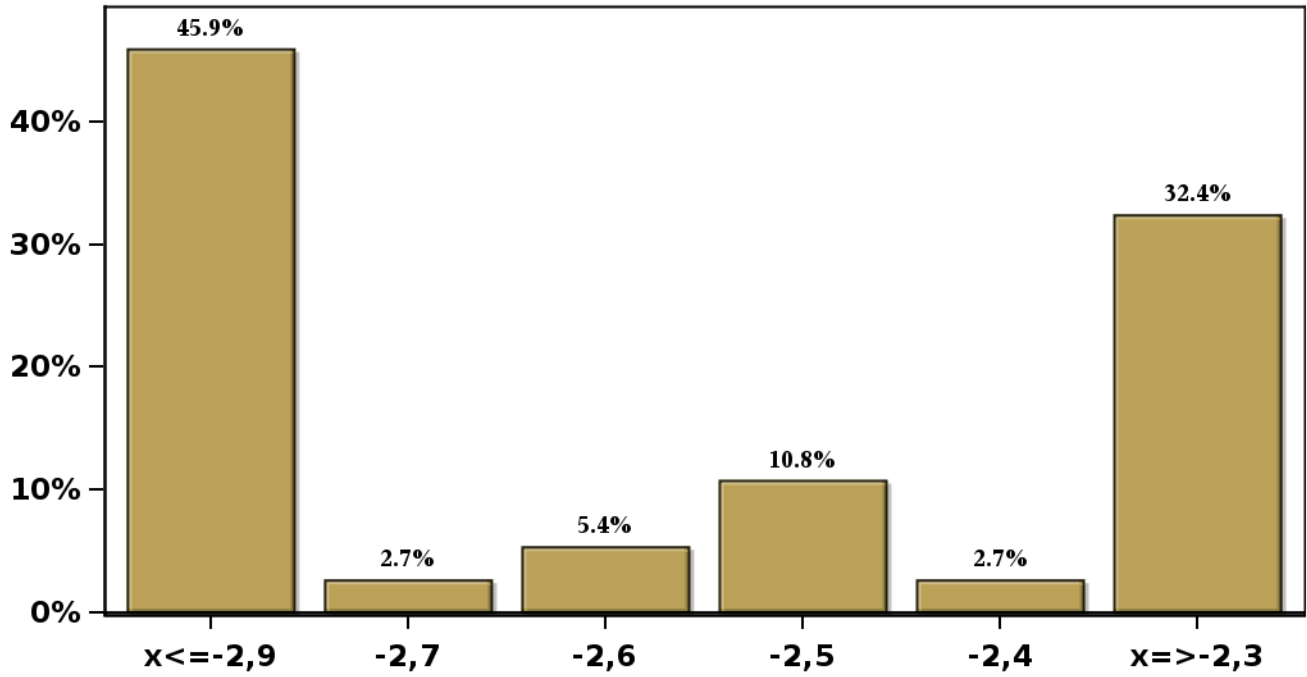


[Click to view summary table](#)

**Monthly Survey On Expectations January 2023**  
**GDP No Mining within calendar quarter of the survey**

**Answers: 37 Median: -2,6%**

**% Obs.**



[Click to view summary table](#)

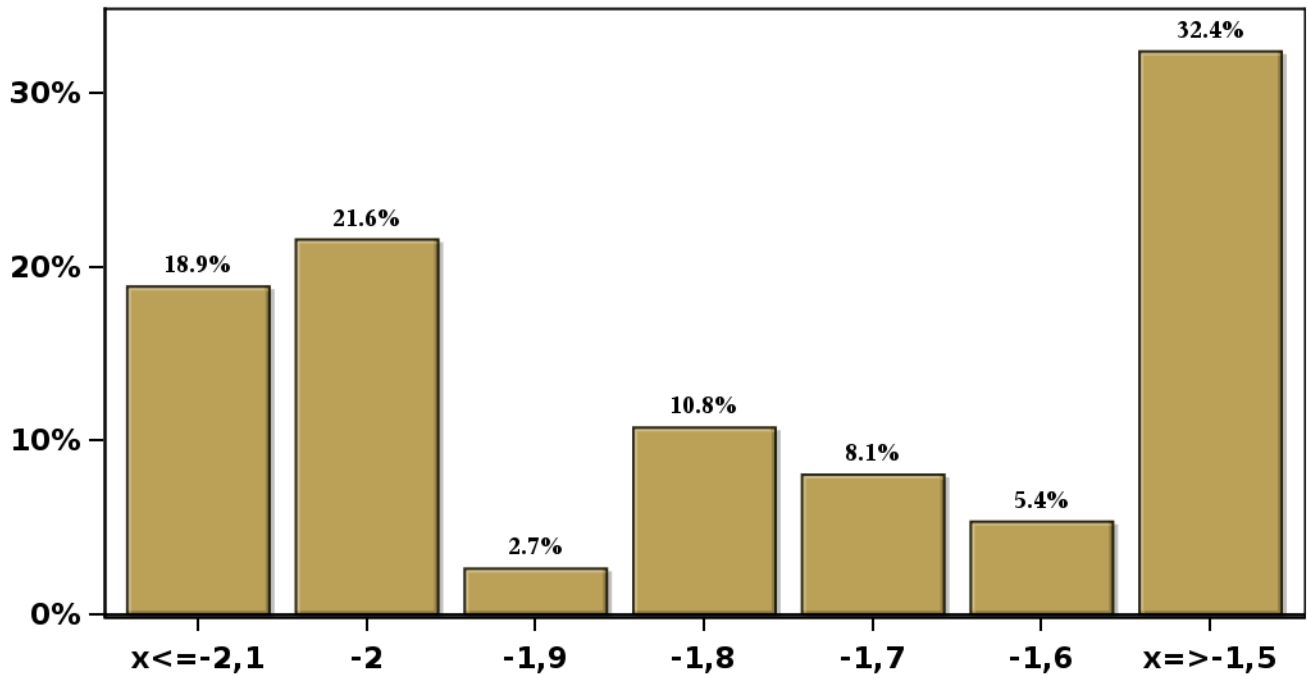


# Monthly Survey On Expectations January 2023

## GDP No Mining year 2023 (12-month change)

Answers: 37 Median: -1,8%

% Obs.

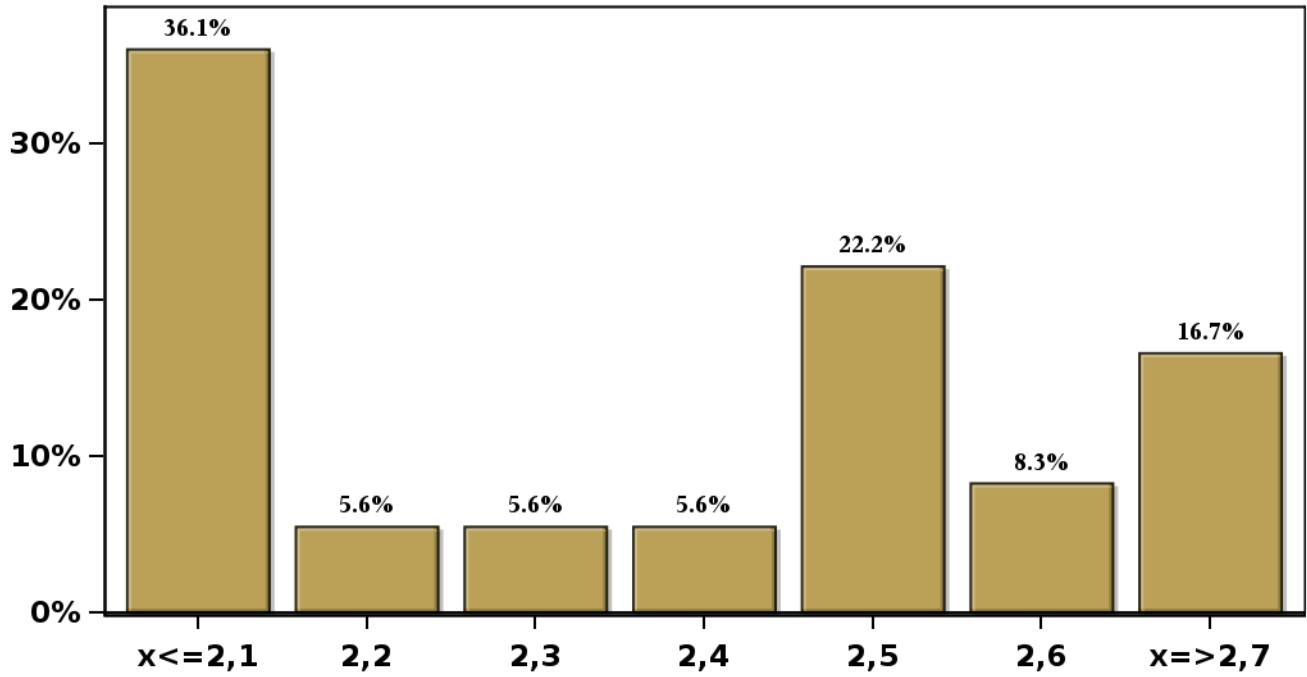


[Click to view summary table](#)

**Monthly Survey On Expectations January 2023**  
**GDP No Mining year 2024 (12-month change)**

**Answers: 36 Median: 2,4%**

**% Obs.**

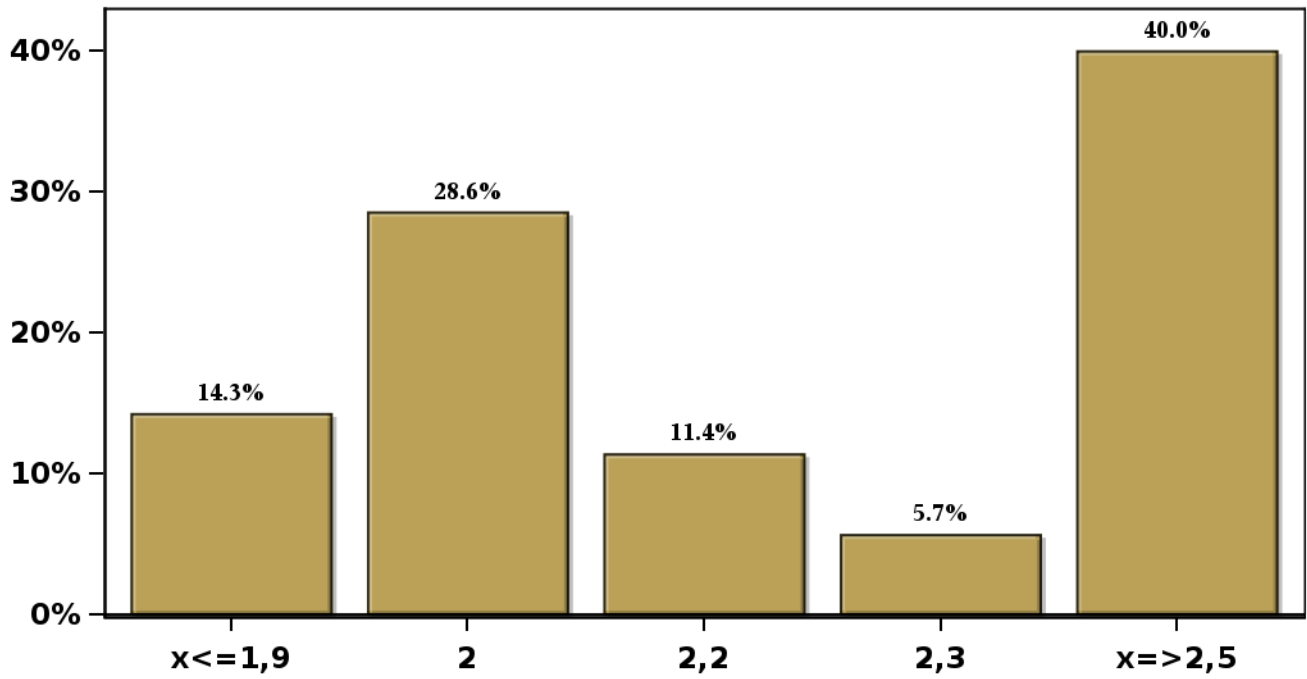


[Click to view summary table](#)

**Monthly Survey On Expectations January 2023**  
**GDP No Mining year 2025 (12-month change)**

**Answers: 35 Median: 2,2%**

**% Obs.**

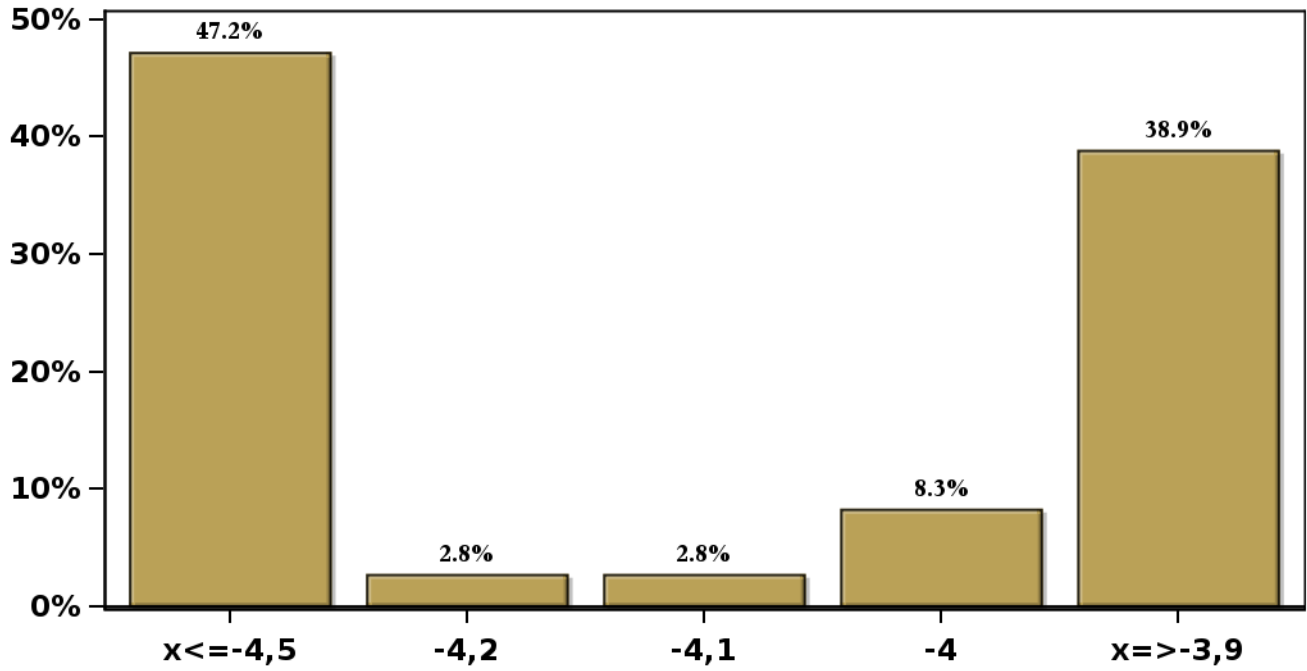


[Click to view summary table](#)

**Monthly Survey On Expectations January 2023**  
**HFC including NPO year 2023 (12-month change)**

**Answers: 36 Median: -4,2%**

**% Obs.**

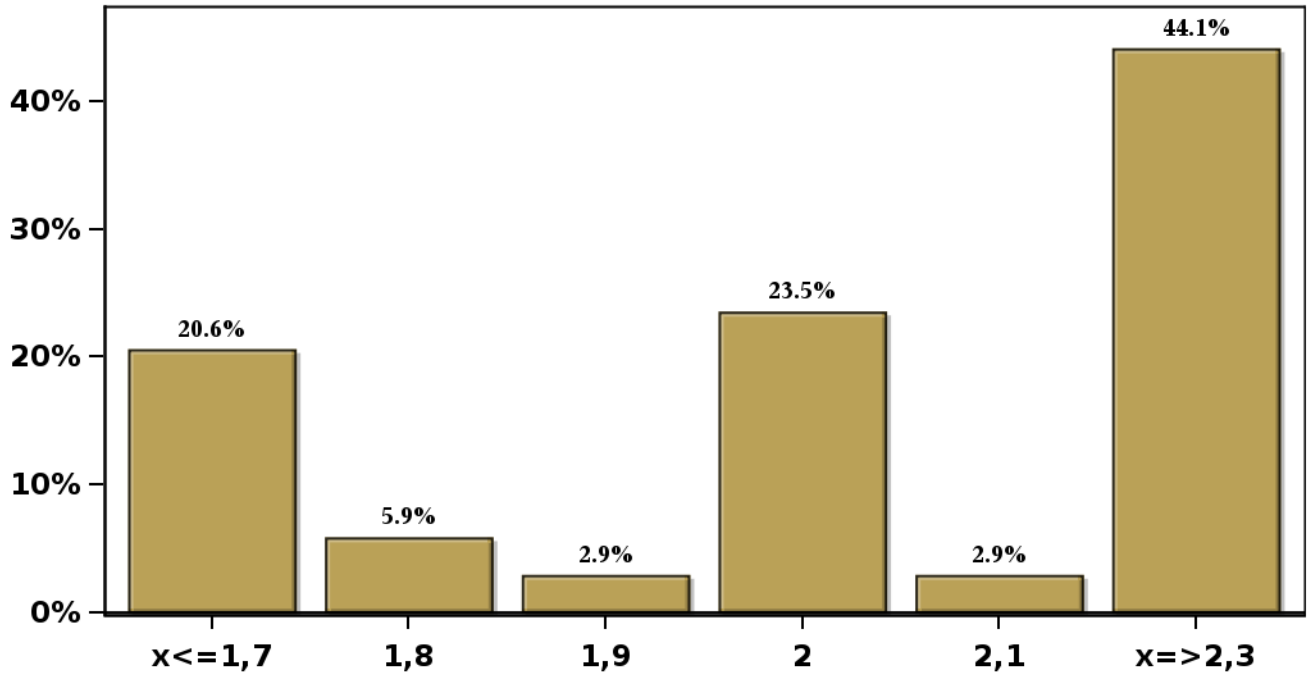


[Click to view summary table](#)

**Monthly Survey On Expectations January 2023**  
**HFC including NPO year 2024 (12-month change)**

**Answers: 34 Median: 2%**

**% Obs.**



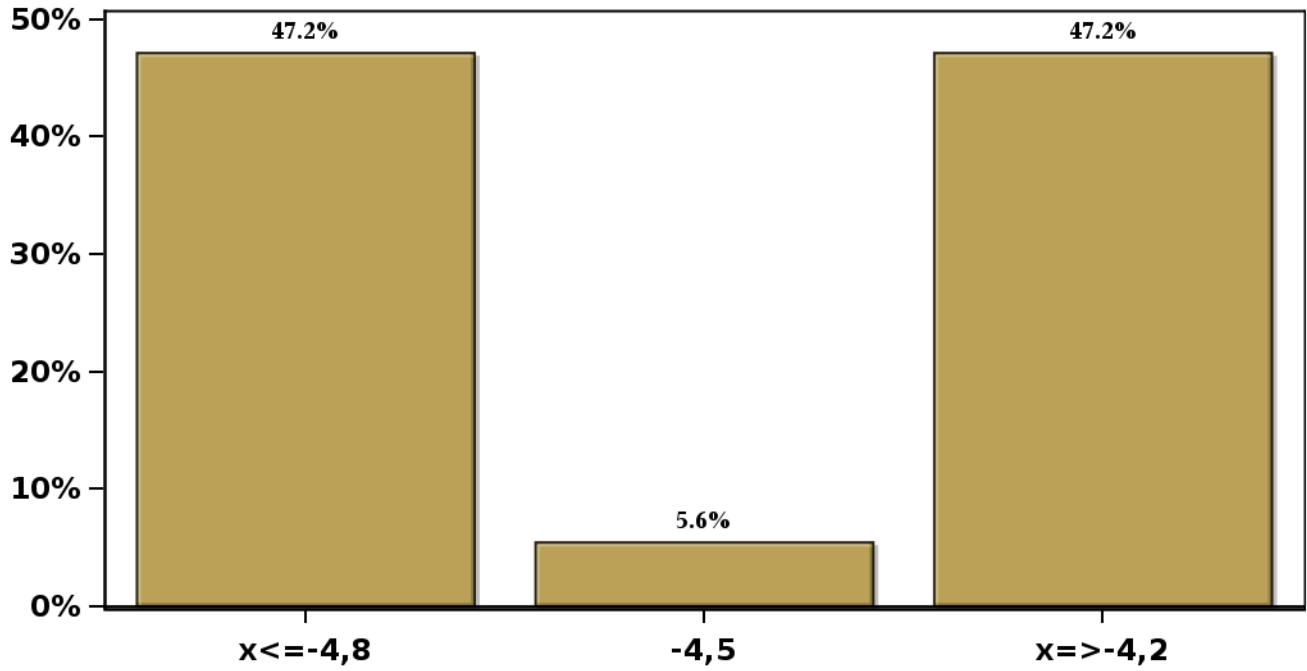
[Click to view summary table](#)

### Monthly Survey On Expectations January 2023

GFCF year 2023 (12-month change)

Answers: 36 Median: -4,5%

% Obs.



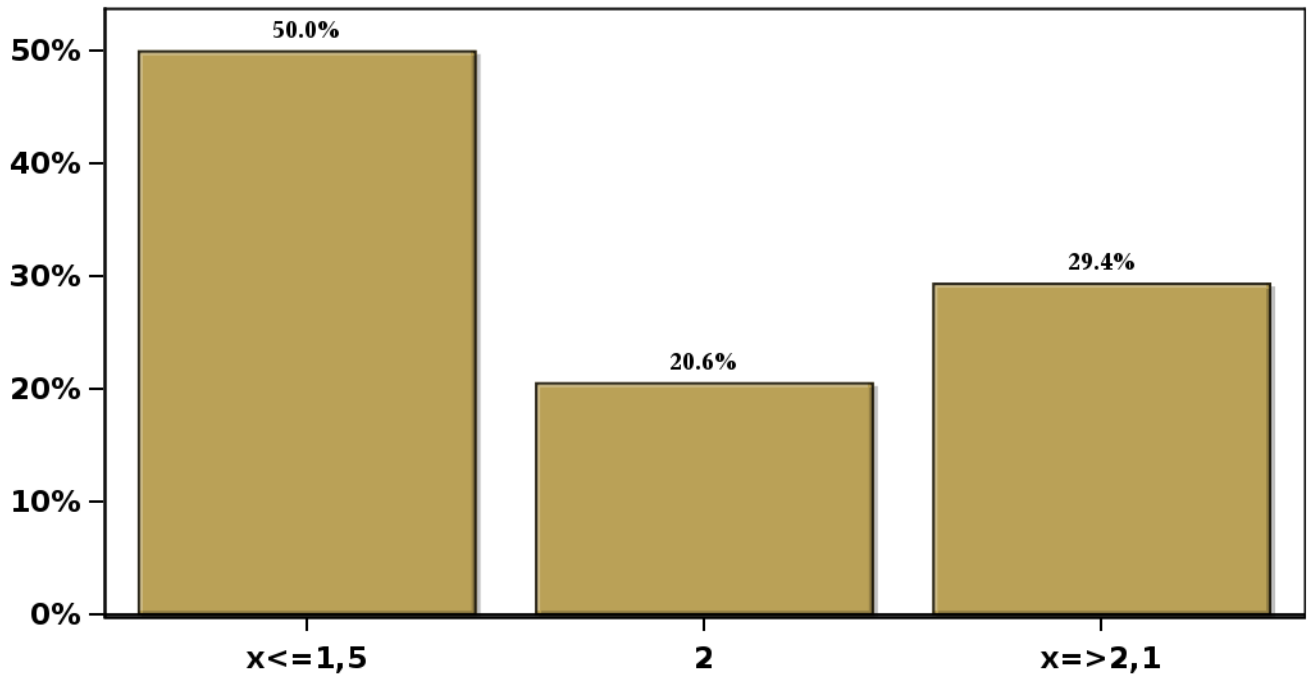
[Click to view summary table](#)

### Monthly Survey On Expectations January 2023

GFCF year 2024 (12-month change)

Answers: 34 Median: 1,8%

% Obs.



[Click to view summary table](#)