

MONTHLY SURVEY ON EXPECTATIONS October 2020

Sent on: 5 October 2020

Deadline for responses: 9 October 2020

Variable	Median	Decile 1	Decile 9	Answers	Graph
01.Inflation (% change)					
Current month (monthly change)	0,30	0,10	0,40	57	Graph1
Next month (monthly change)	0,10	0,00	0,20	57	Graph2
In eleven months (12-month change)	2,70	2,30	3,00	57	Graph3
In twenty three months (12-month change)	3,00	2,50	3,00	56	Graph4
In thirty five months (12-month change)	3,00	2,80	3,00	56	Graph5
December 2020 (12-month change)	2,40	2,20	2,90	57	Graph6
December 2021 (12-month change)	2,80	2,50	3,10	57	Graph7
02.Monetary Policy rate target (%) (*)					
Following meeting	0,50	0,50	0,50	57	Graph8
Second following meeting	0,50	0,50	0,50	57	Graph9
In five months	0,50	0,50	0,50	57	Graph10
December 2020	0,50	0,50	0,50	57	Graph11
In eleven months	0,50	0,50	1,00	57	Graph12
In seventeen months	0,75	0,50	1,25	56	Graph13
In twenty three months	1,00	0,75	1,50	56	Graph14
In thirty five months	1,75	1,25	3,00	55	Graph15
03.5-Year BCU (%) (*)					
In two months	-0,90	-1,20	-0,80	49	Graph16
In eleven months	-0,50	-0,80	-0,10	48	Graph17
In twenty three months forward	0,00	-0,50	0,60	47	Graph18
04.5-Year BCP (%) (*)					
In two months	1,50	1,40	2,00	49	Graph19
In eleven months	2,10	1,70	2,50	48	Graph20
In twenty three months forward	2,90	2,00	3,10	47	Graph21
05.Exchange Rate (CH \$ per US\$ 1) (*)					
In two months	785,00	770,00	800,00	57	Graph22
In eleven months	775,00	740,00	800,00	57	Graph23
In twenty three months forward	758,00	710,00	800,00	55	Graph24
06.IMACEC (Monthly Activity Index)					
One month ago	-7,10	-10,00	-5,00	57	Graph25
07.IMACEC No Mining (monthly activity index)					
One month ago	-8,50	-11,00	-5,60	47	Graph26
08.GDP (12-month change)					
Within calendar quarter of the survey	0,10	-5,30	2,60	56	Graph27
Year 2020	-5,50	-6,50	-5,00	57	Graph28
Year 2021	4,50	2,50	5,10	56	Graph29
Year 2022	3,00	2,50	4,00	54	Graph30
09.GDP No Mining (12-month change)					
Within calendar quarter of the survey	-0,40	-8,10	3,00	46	Graph31
Year 2020	-6,30	-8,00	-5,20	46	Graph32
Year 2021	4,80	2,00	5,80	46	Graph33
Year 2022	3,10	2,50	4,30	45	Graph34
10.HFC including NPO (12-month change)					
Year 2020	-5,00	-8,00	-2,50	46	Graph35
Year 2021	4,50	2,00	7,00	45	Graph36
11.GFCF (12-month change)					
Year 2020	-10,60	-14,00	-1,00	47	Graph37
Year 2021	6,20	1,50	8,00	47	Graph38

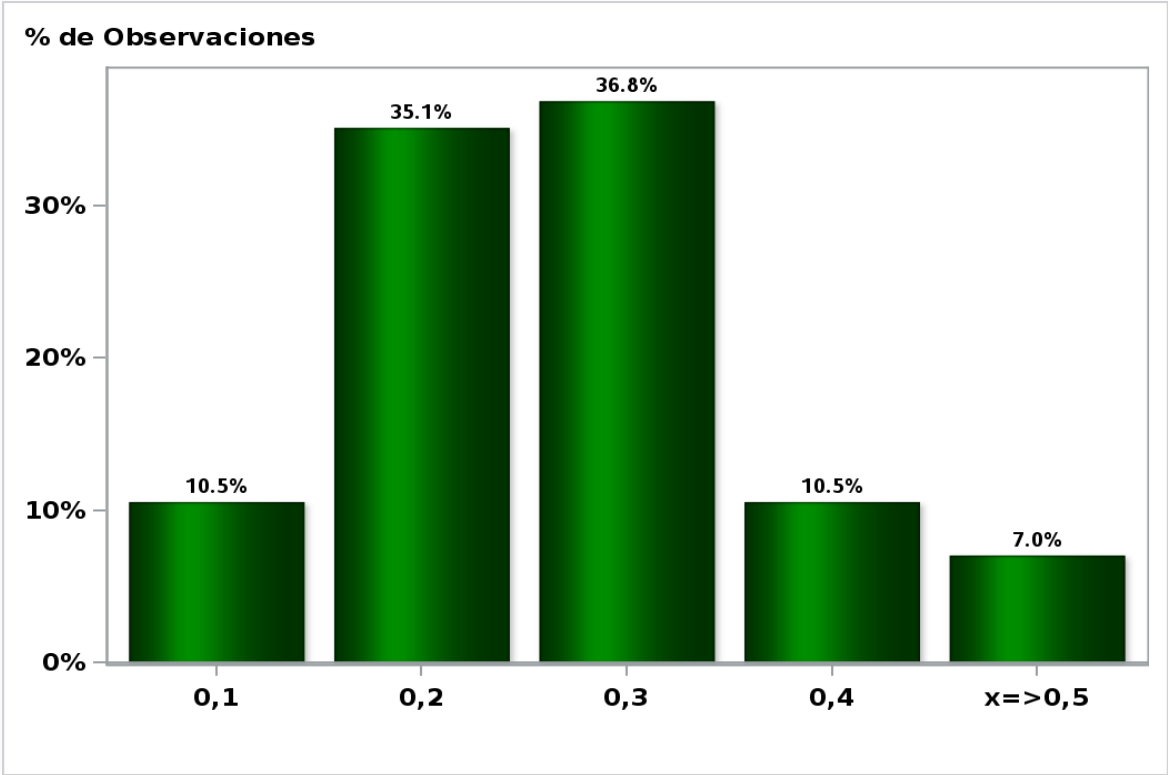
(*) End of the month.

Monthly survey of selected academics, consultants, and executives or advisors of financial institutions and corporations. It is completed the day after the publication of the CPI and it is published the day after its reception, at 8:30 hrs. approximately(www.bcentral.cl, Statistics section, Economic Surveys, Website: <https://www.bcentral.cl/en/areas/economic-surveys>)

The survey period comprises the week prior to publication

Monthly Survey On Expectations October 2020
Inflation current month (monthly change)

Answers: 57 Median: 0,3%

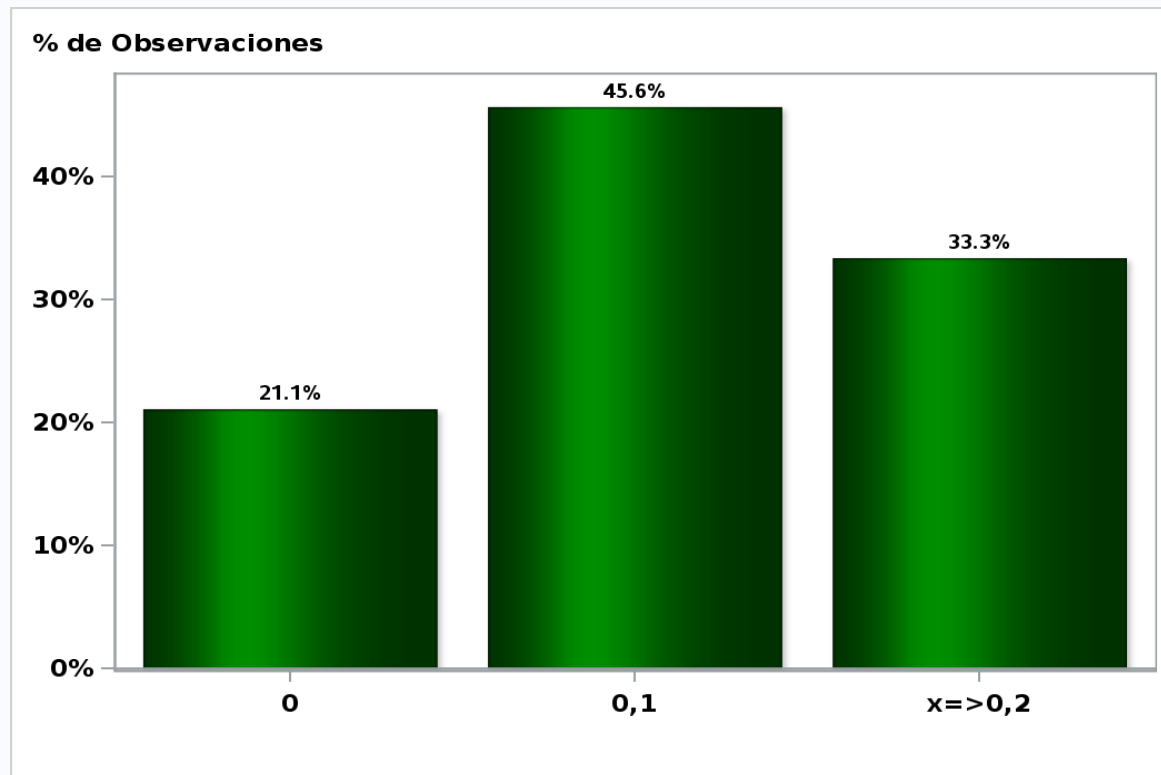


[Click to view summary table](#)

Monthly Survey On Expectations October 2020

Inflation next month (monthly change)

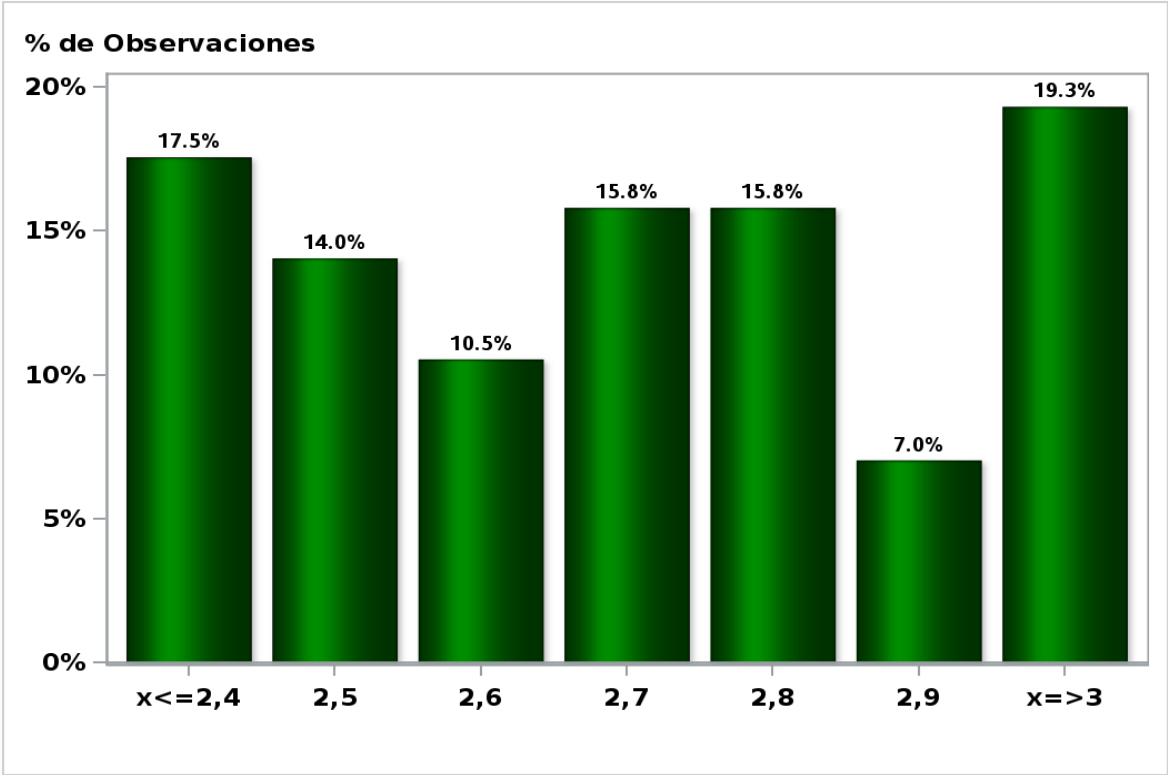
Answers: 57 Median: 0,1%



[Click to view summary table](#)

Monthly Survey On Expectations October 2020
Inflation in eleven months (12-month change)

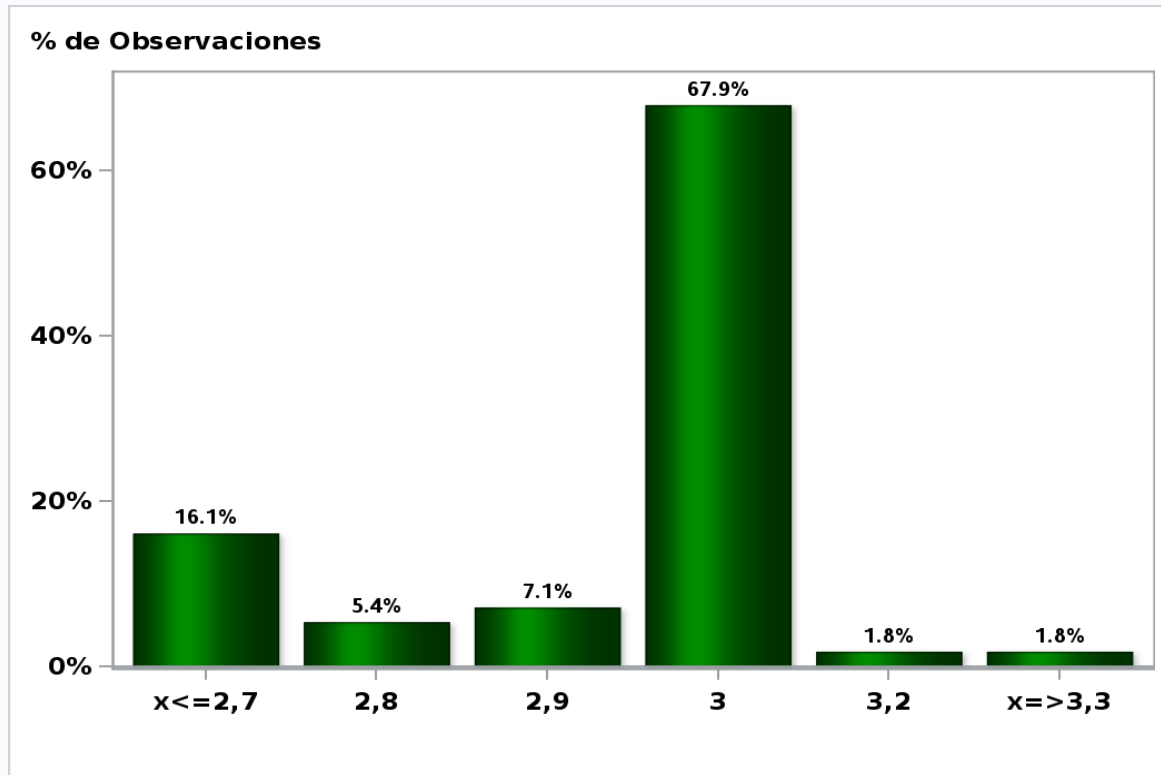
Answers: 57 Median: 2,7%



[Click to view summary table](#)

Monthly Survey On Expectations October 2020
Inflation in twenty three months (12-month change)

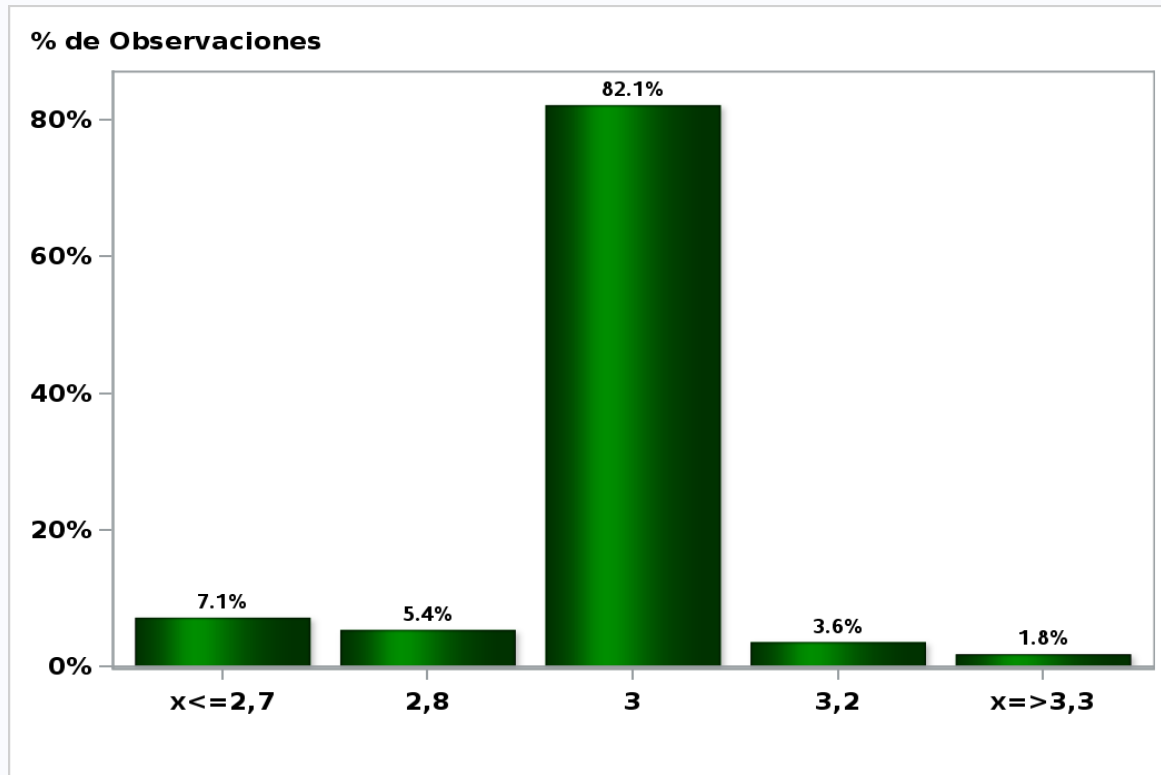
Answers: 56 Median: 3%



[Click to view summary table](#)

Monthly Survey On Expectations October 2020
Inflation in thirty five months (12-month change)

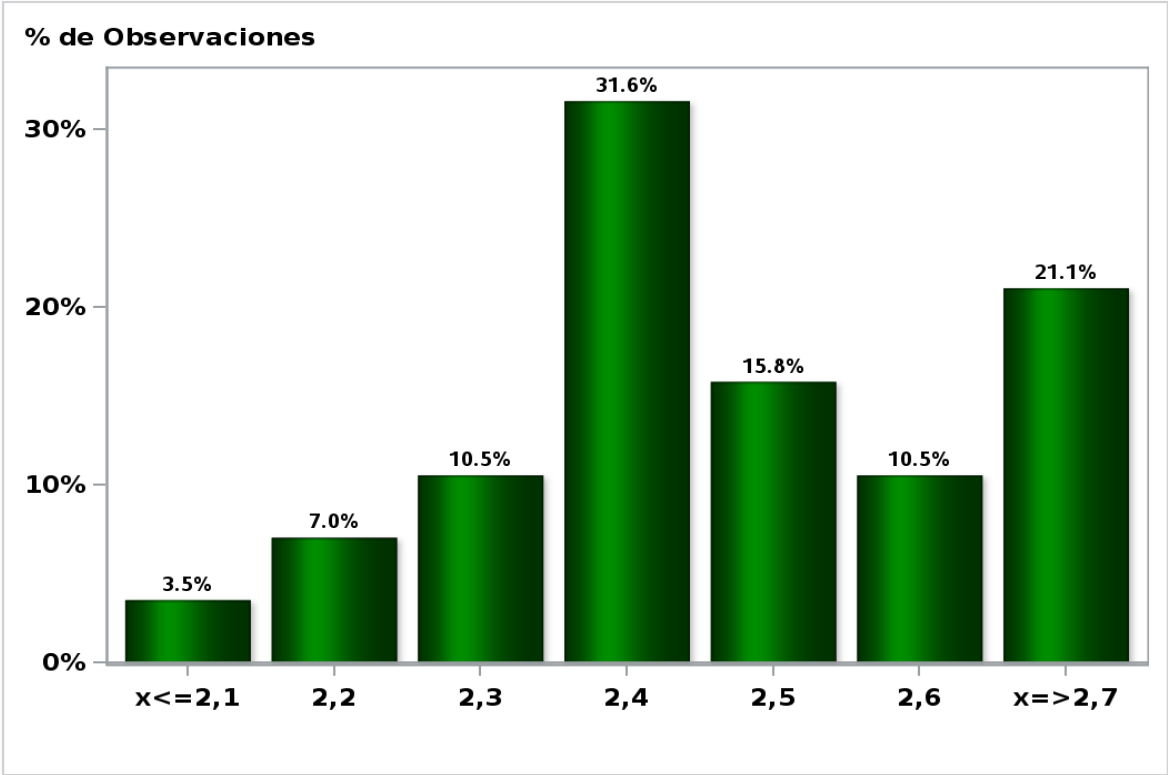
Answers: 56 Median: 3%



[Click to view summary table](#)

Monthly Survey On Expectations October 2020
Inflation december 2020 (12-month change)

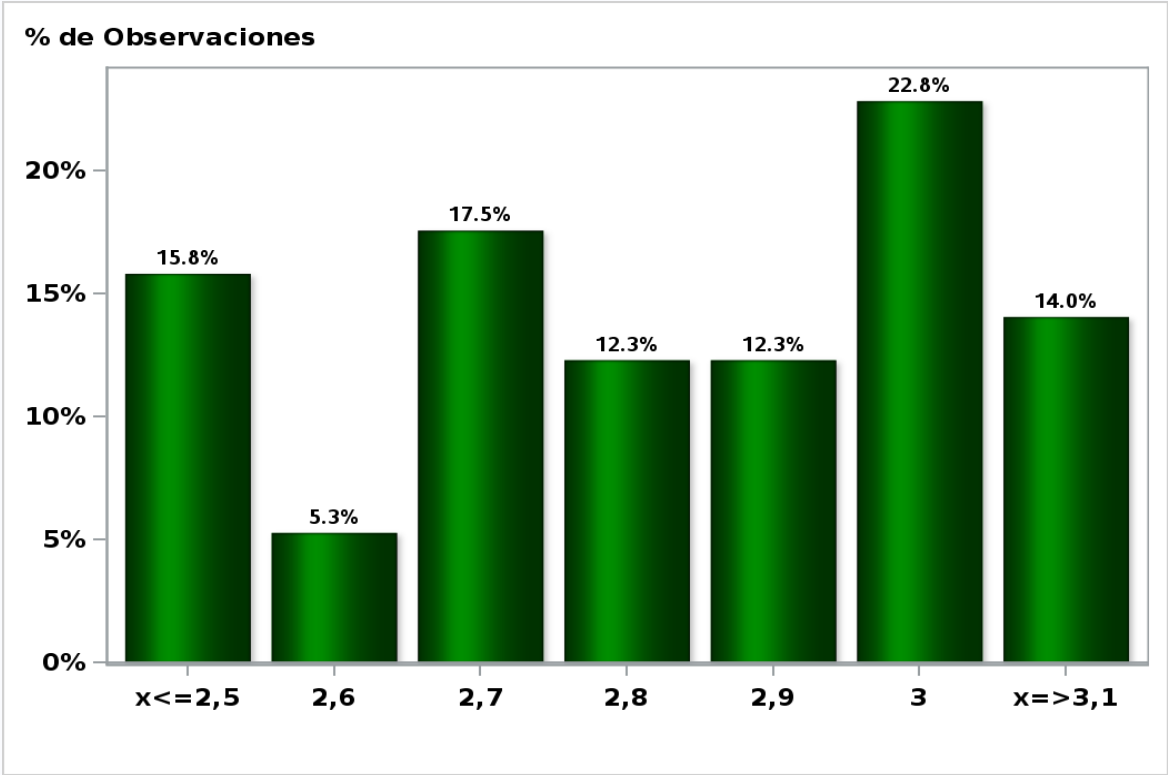
Answers: 57 Median: 2,4%



[Click to view summary table](#)

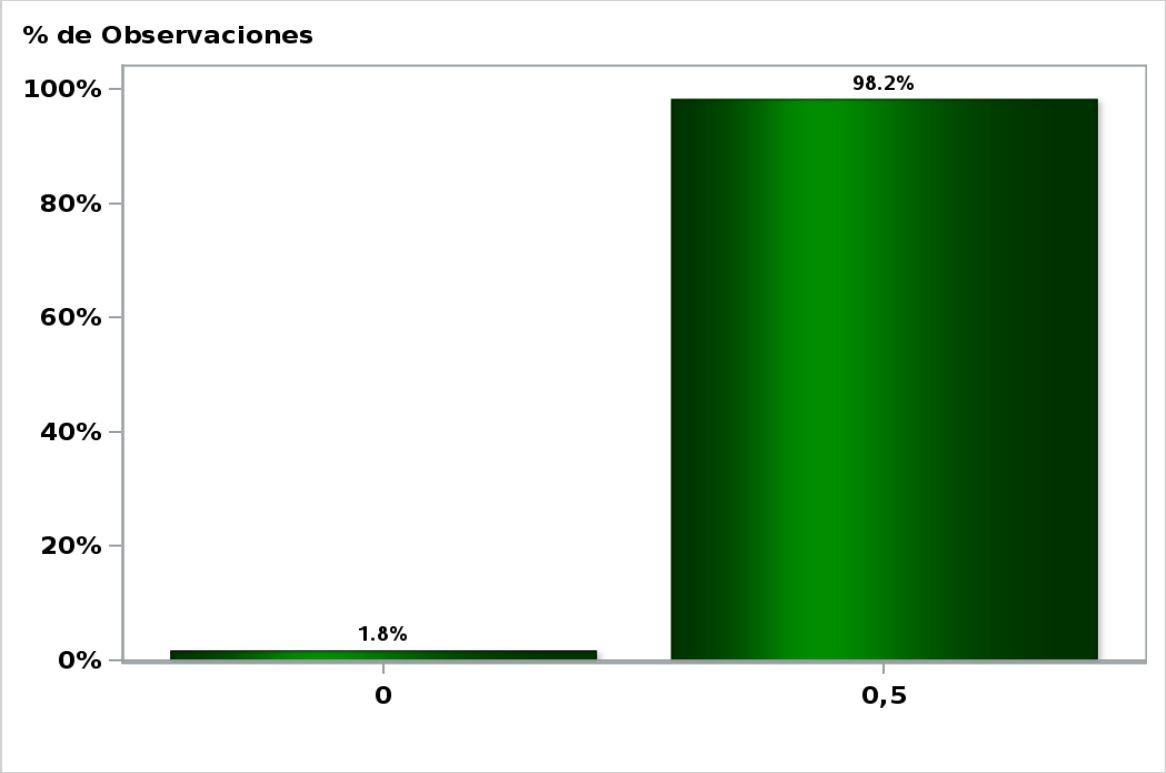
Monthly Survey On Expectations October 2020
Inflation december 2021 (12-month change)

Answers: 57 Median: 2,8%



[Click to view summary table](#)

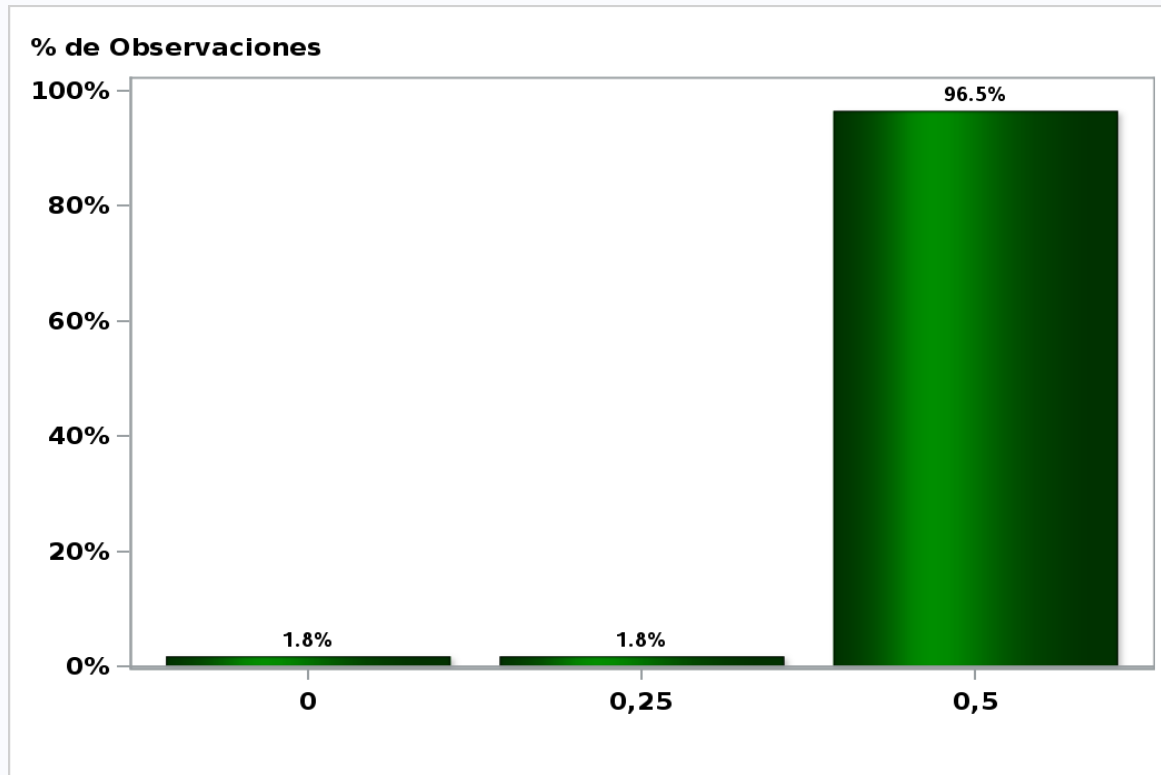
Monthly Survey On Expectations October 2020
Monetary Policy rate target following meeting
Answers: 57 Median: 0,5%



[Click to view summary table](#)

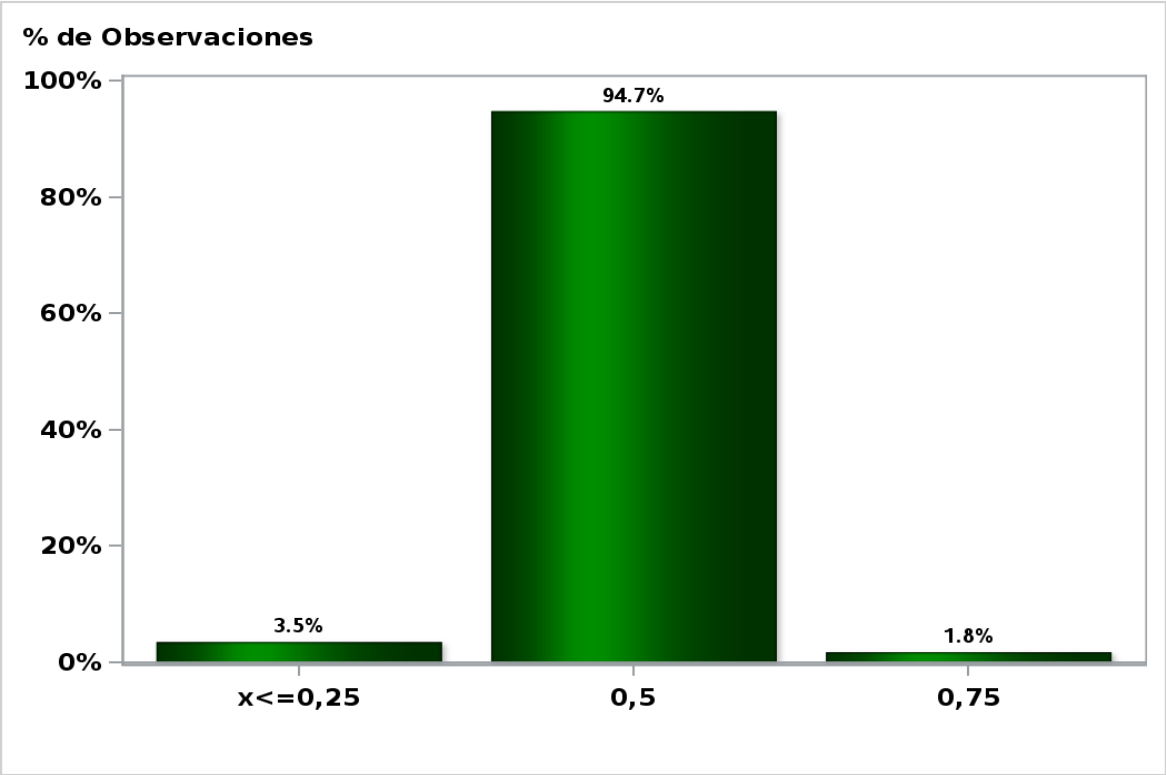
Monthly Survey On Expectations October 2020
Monetary Policy rate target second following meeting

Answers: 57 Median: 0,5%



[Click to view summary table](#)

Monthly Survey On Expectations October 2020
Monetary Policy rate target In five months
Answers: 57 Median: 0,5%

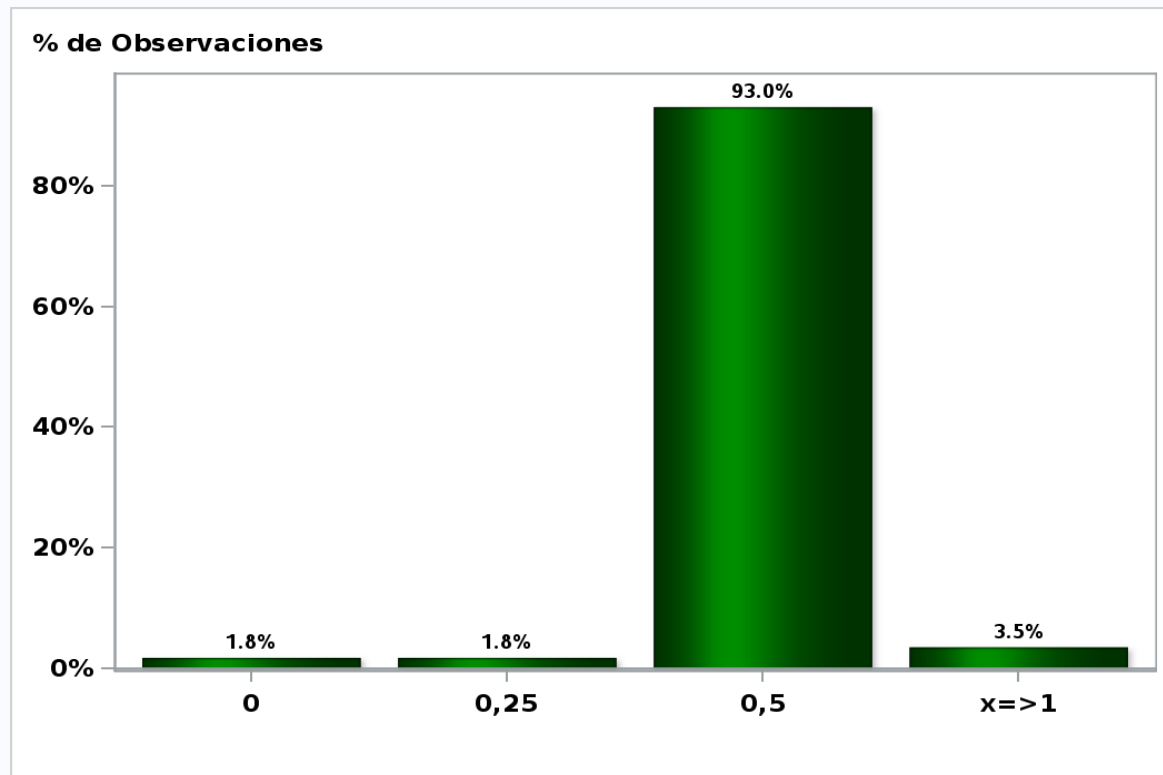


[Click to view summary table](#)

Monthly Survey On Expectations October 2020

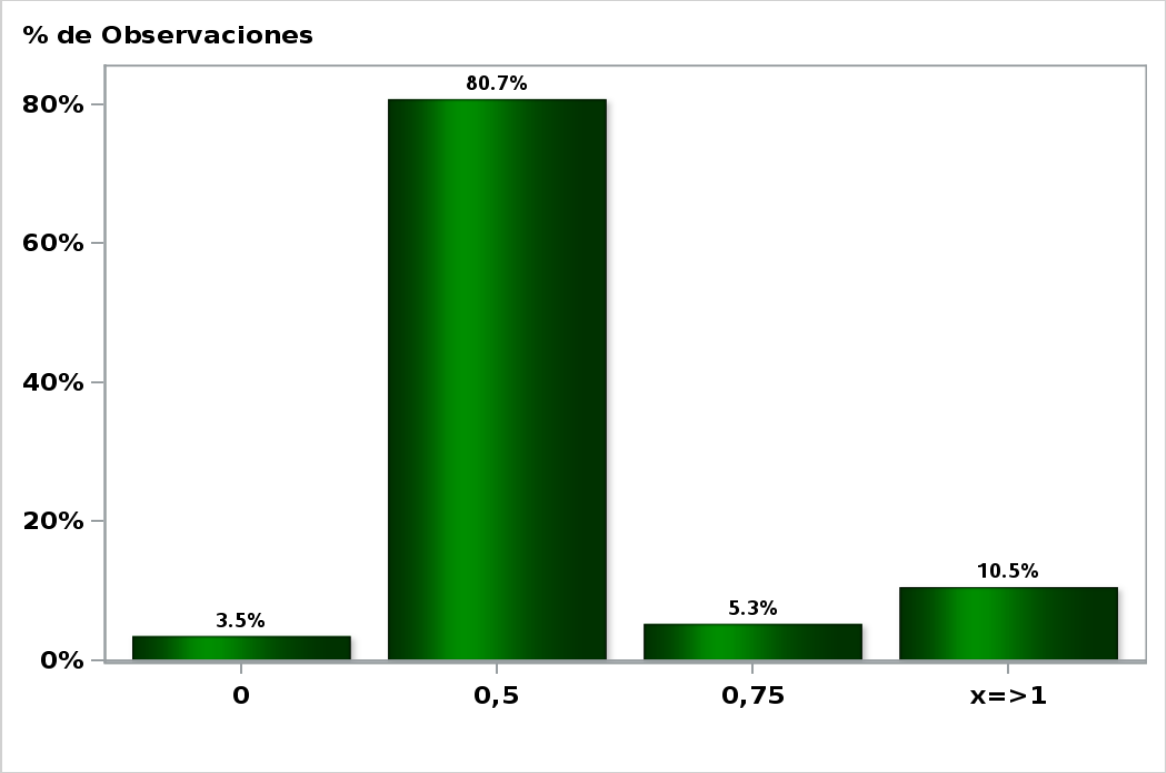
Monetary Policy rate target december 2020

Answers: 57 Median: 0,5%



[Click to view summary table](#)

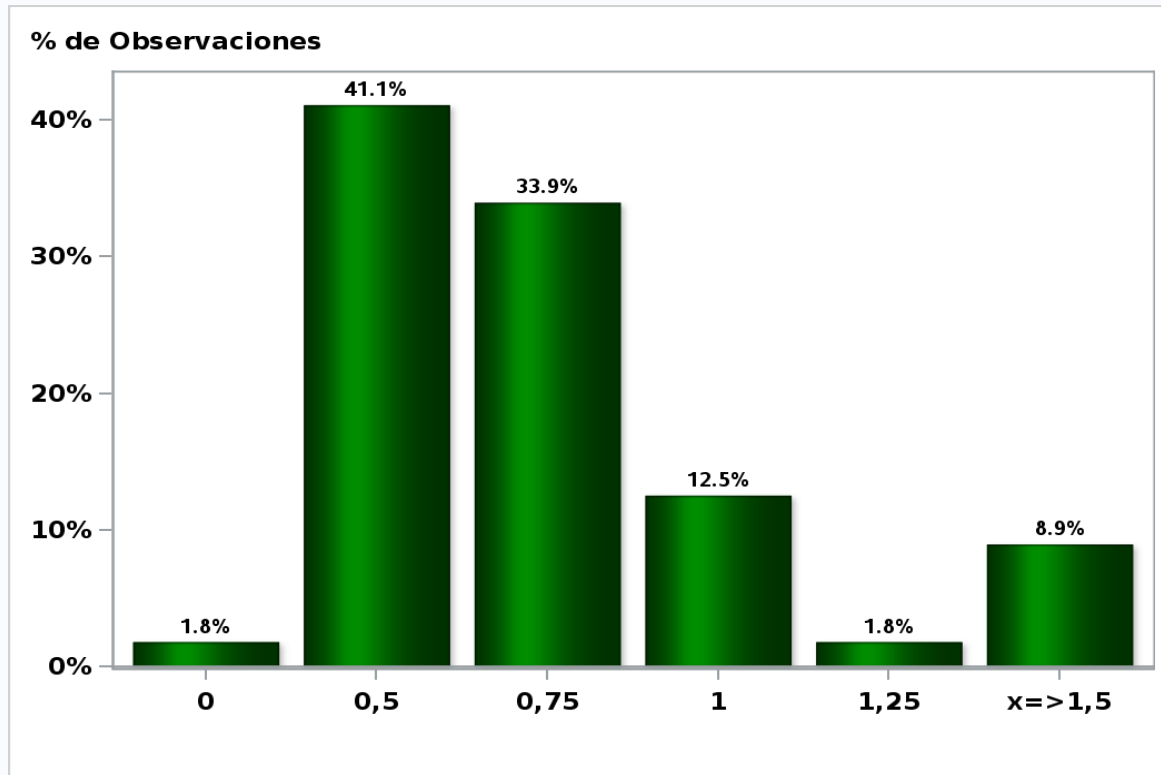
Monthly Survey On Expectations October 2020
Monetary Policy rate target in eleven months
Answers: 57 Median: 0,5%



[Click to view summary table](#)

Monthly Survey On Expectations October 2020
Monetary Policy rate target in seventeen months

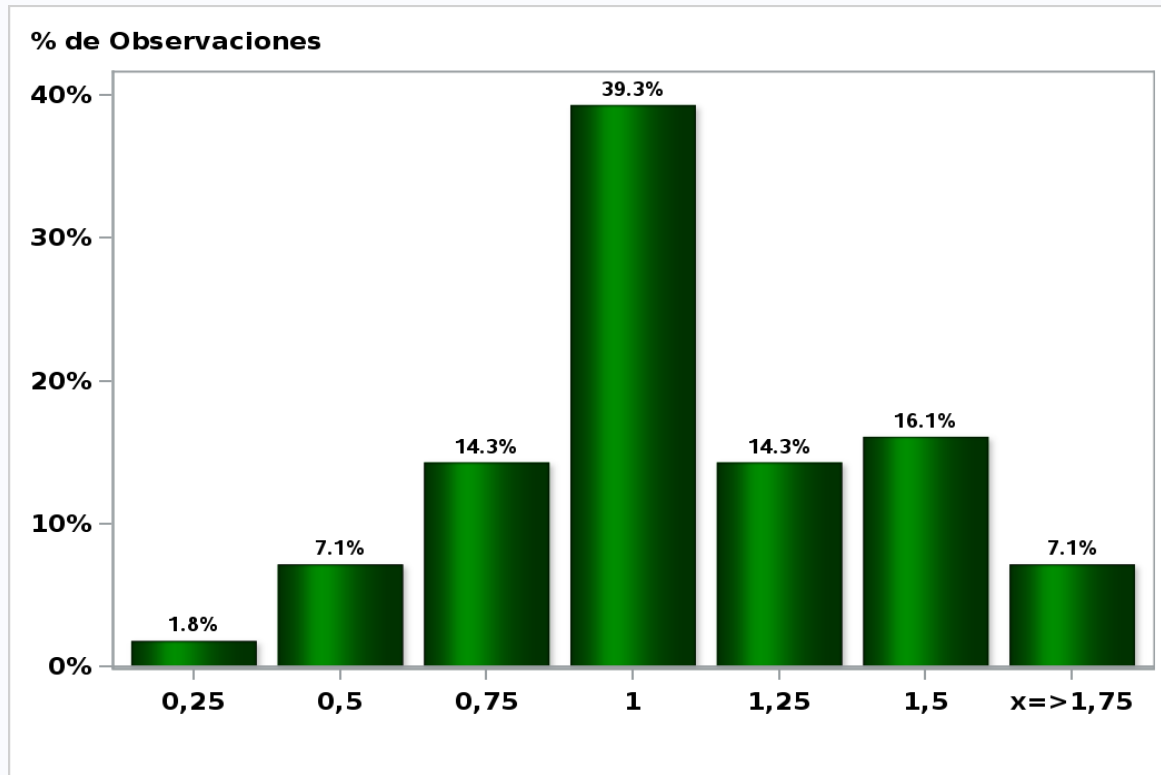
Answers: 56 Median: 0,75%



[Click to view summary table](#)

Monthly Survey On Expectations October 2020
Monetary Policy rate target in twenty three months

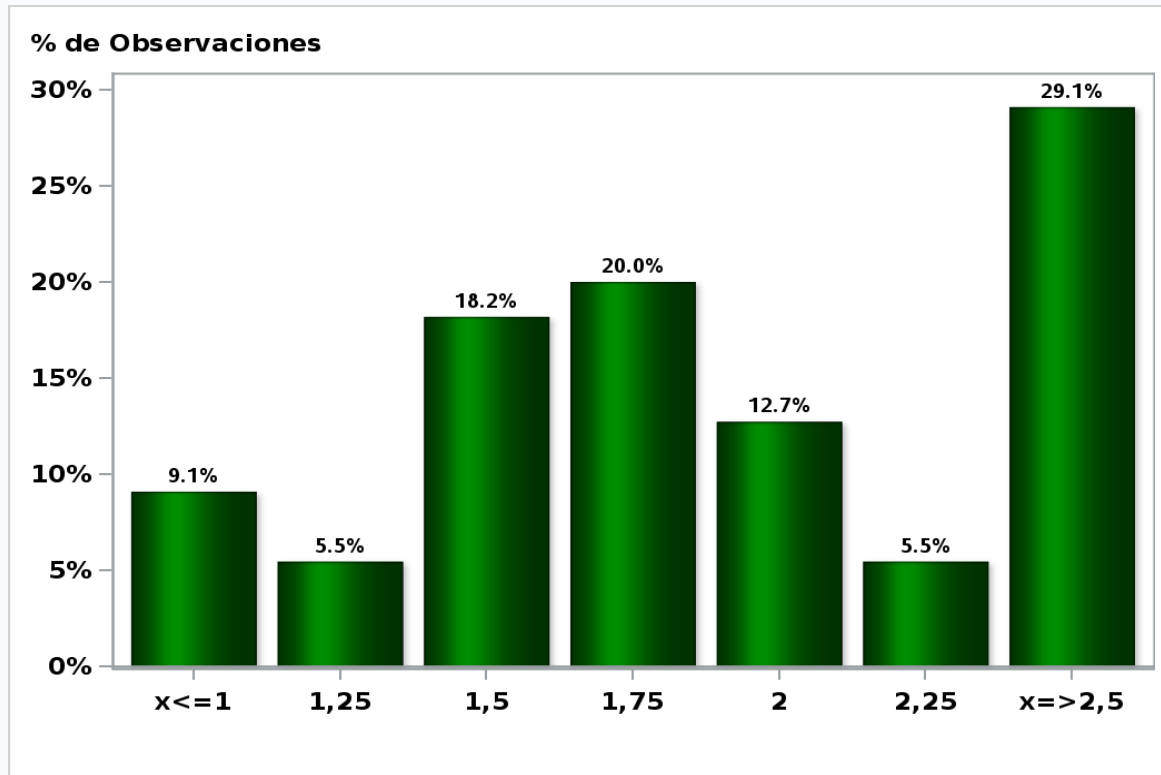
Answers: 56 Median: 1%



[Click to view summary table](#)

Monthly Survey On Expectations October 2020
Monetary Policy rate target in thirty five months

Answers: 55 Median: 1,75%

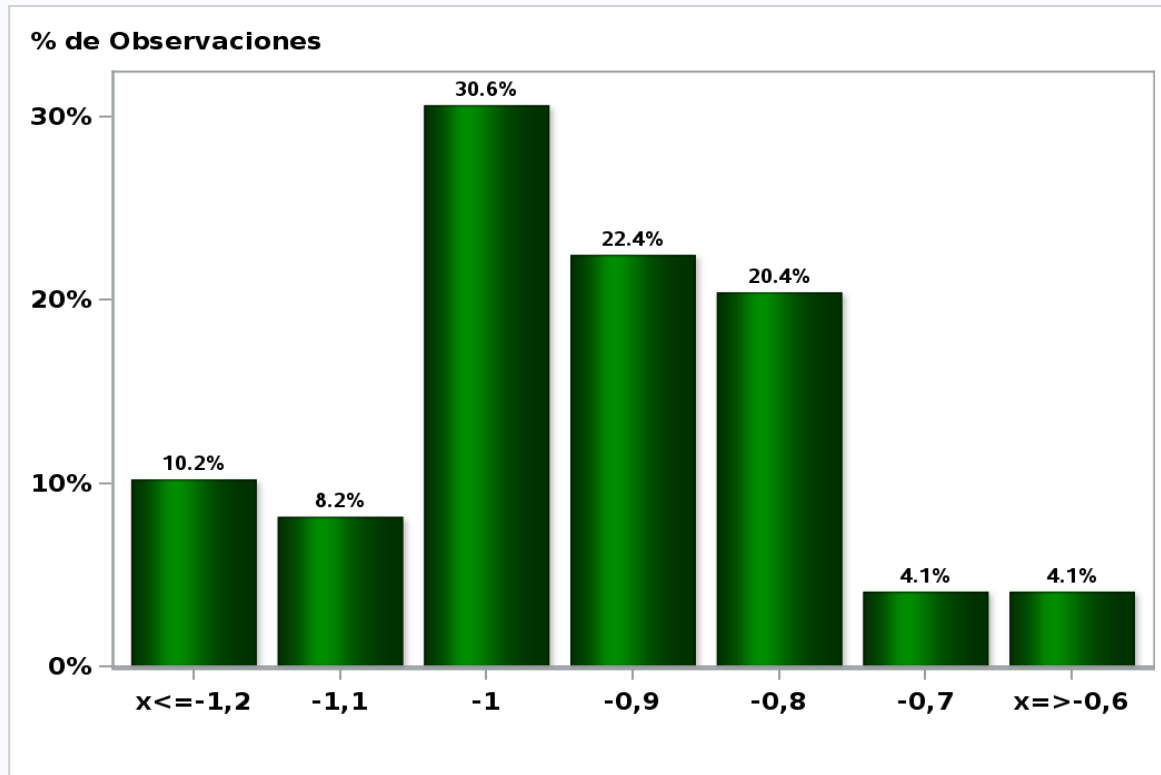


[Click to view summary table](#)

Monthly Survey On Expectations October 2020

5-Year BCU In two months

Answers: 49 Median: -0,9%

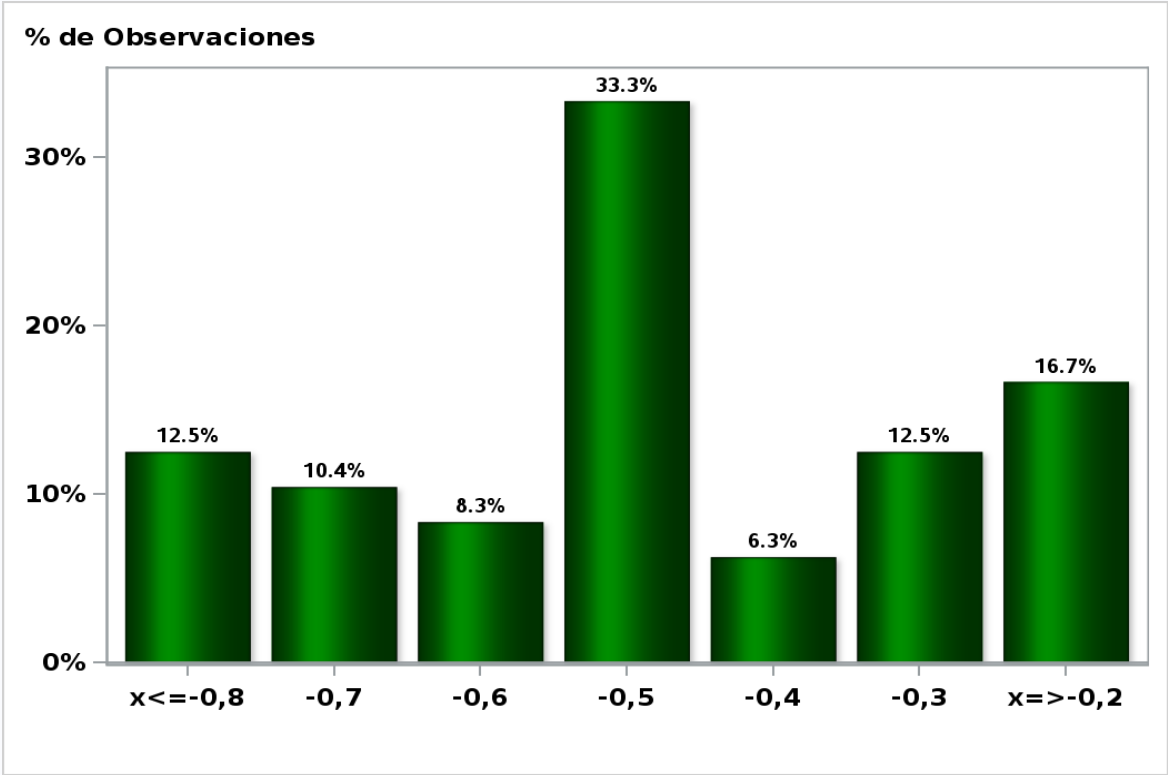


[Click to view summary table](#)

Monthly Survey On Expectations October 2020

5-Year BCU in eleven months

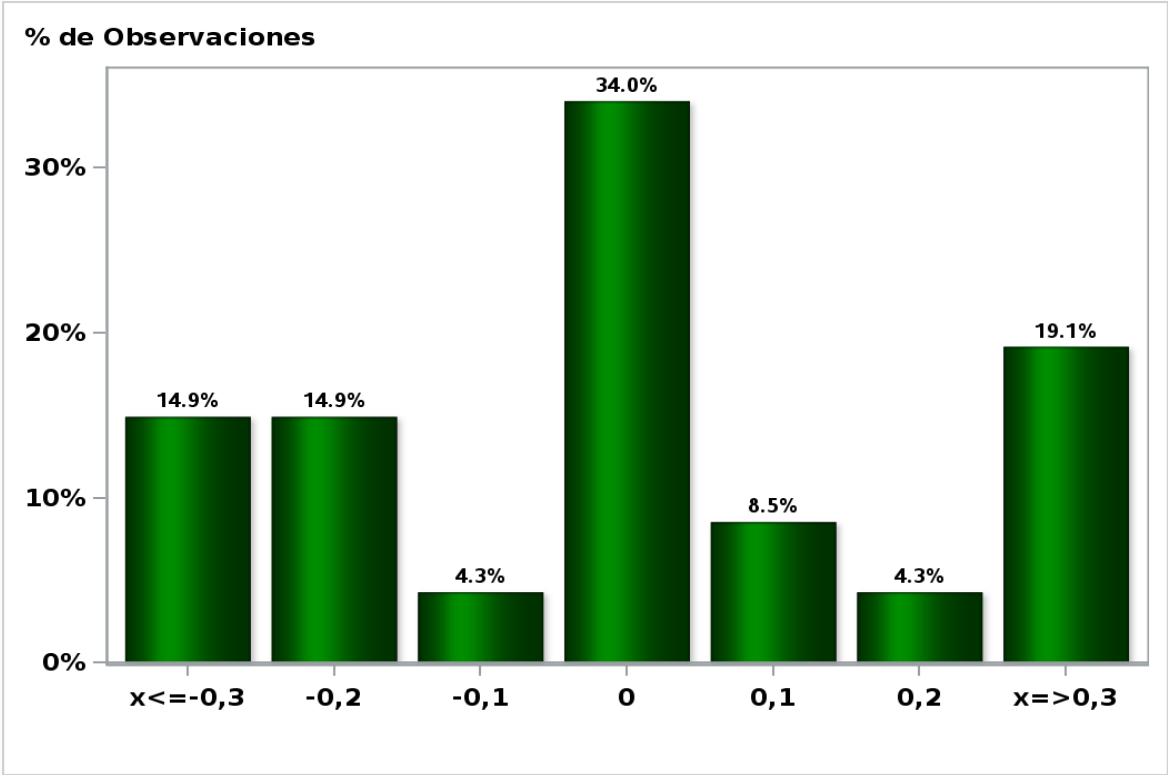
Answers: 48 Median: -0,5%



[Click to view summary table](#)

Monthly Survey On Expectations October 2020
5-Year BCU in twenty three months forward

Answers: 47 Median: 0%

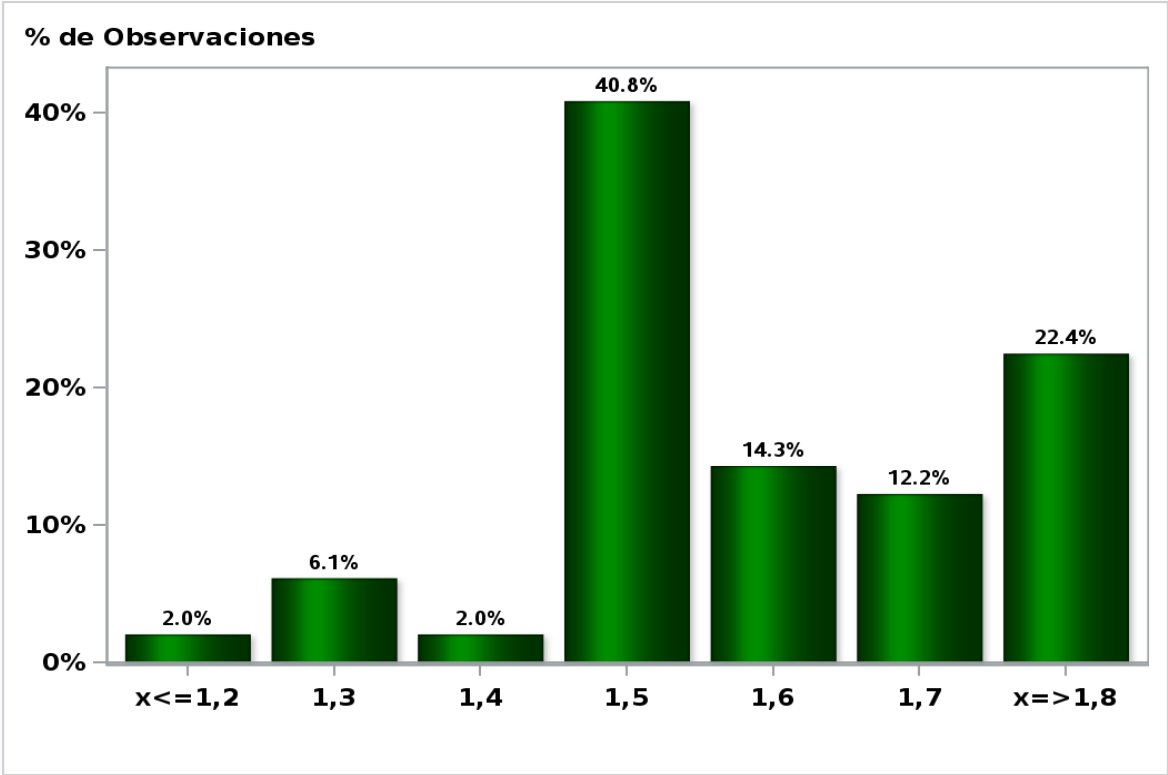


[Click to view summary table](#)

Monthly Survey On Expectations October 2020

5-Year BCP in two months

Answers: 49 Median: 1,5%

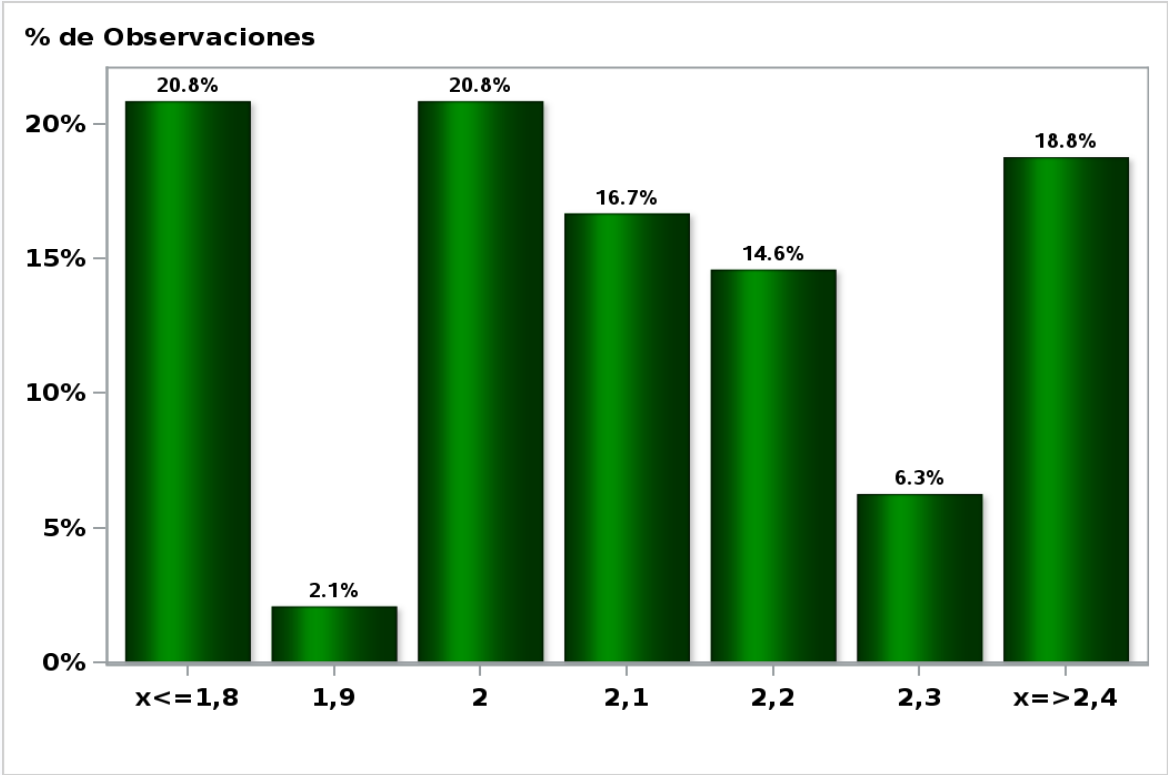


[Click to view summary table](#)

Monthly Survey On Expectations October 2020

5-Year BCP in eleven months

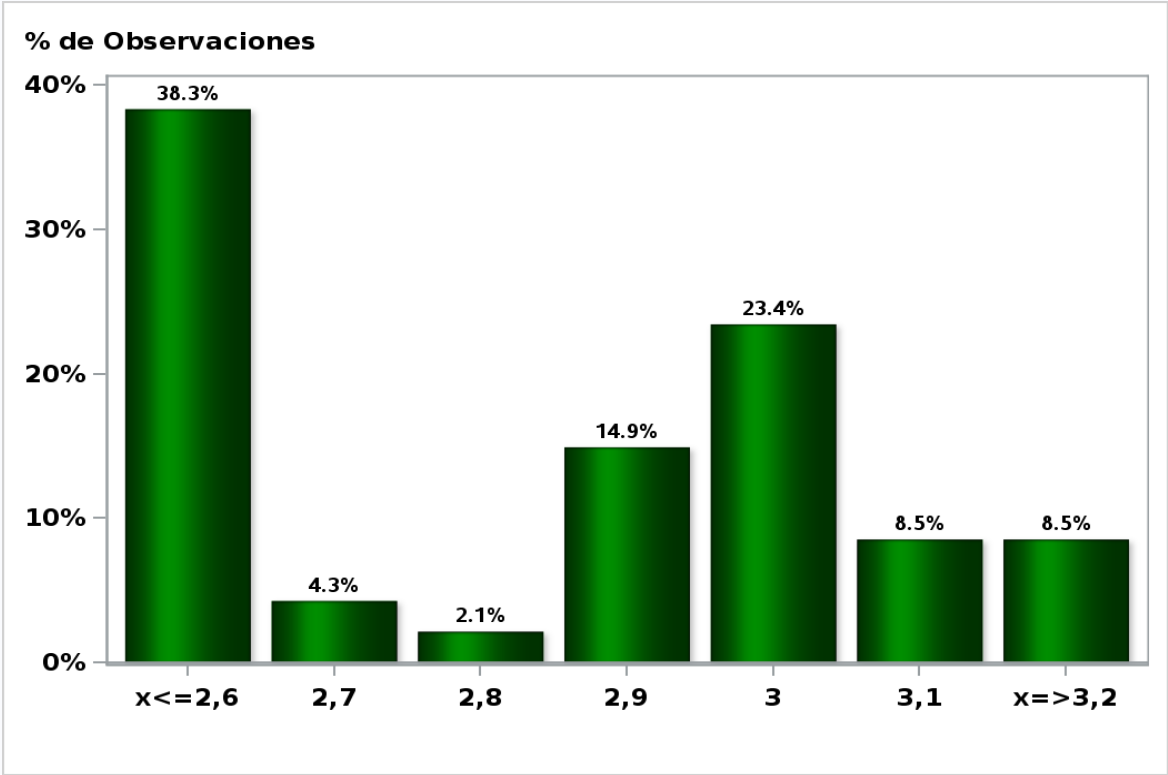
Answers: 48 Median: 2,1%



[Click to view summary table](#)

Monthly Survey On Expectations October 2020
5-Year BCP in twenty three months forward

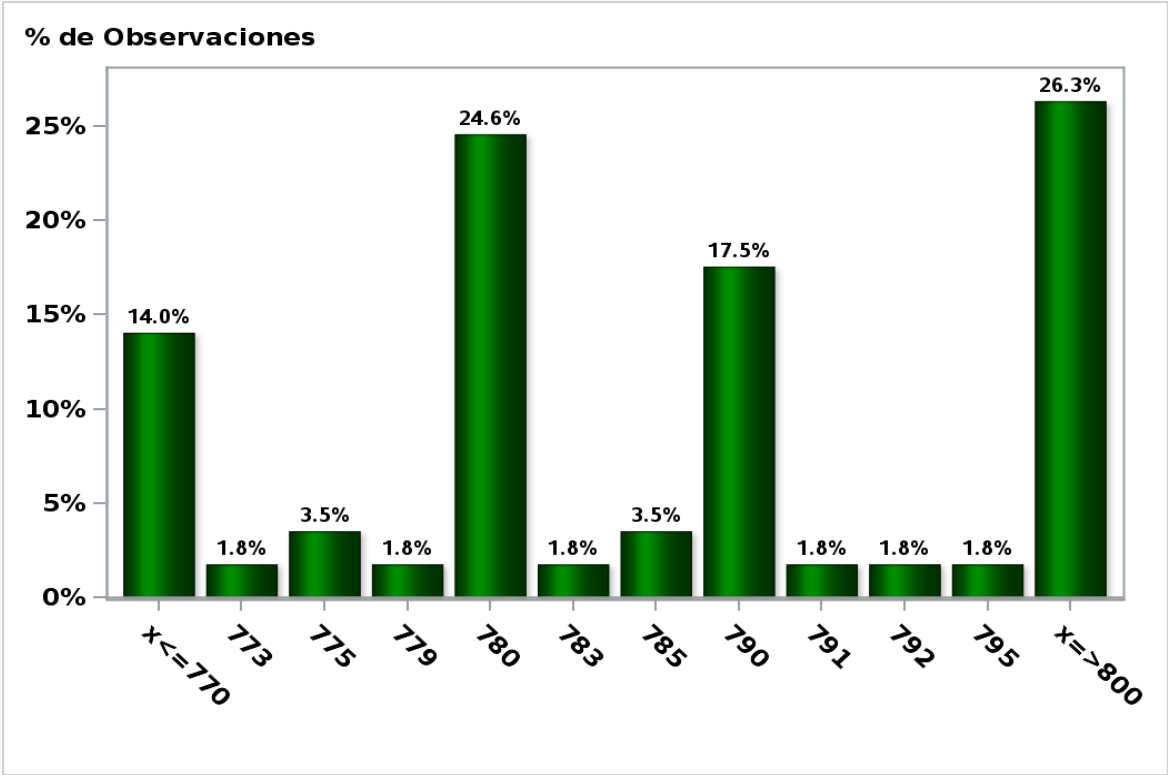
Answers: 47 Median: 2,9%



[Click to view summary table](#)

Monthly Survey On Expectations October 2020
Exchange Rate in two months (CH \$ per US\$)

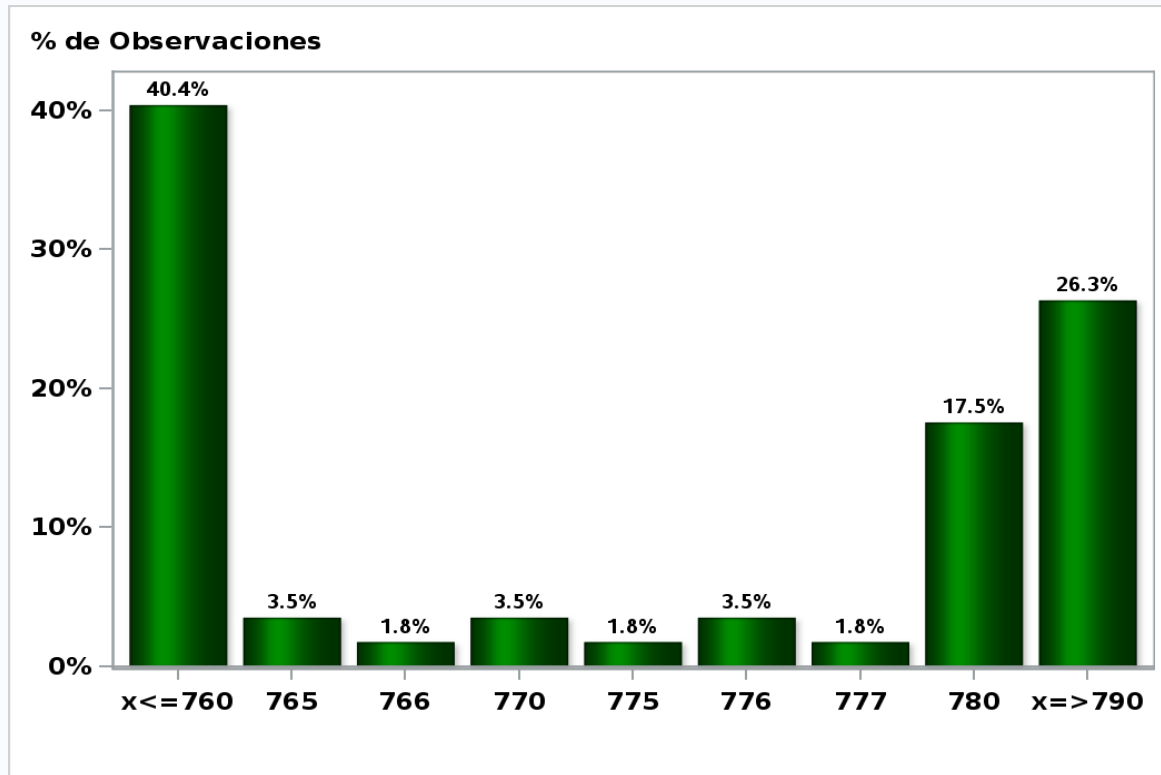
Answers: 57 Median: \$785



[Click to view summary table](#)

Monthly Survey On Expectations October 2020
Exchange Rate in eleven months (CH \$ per US\$)

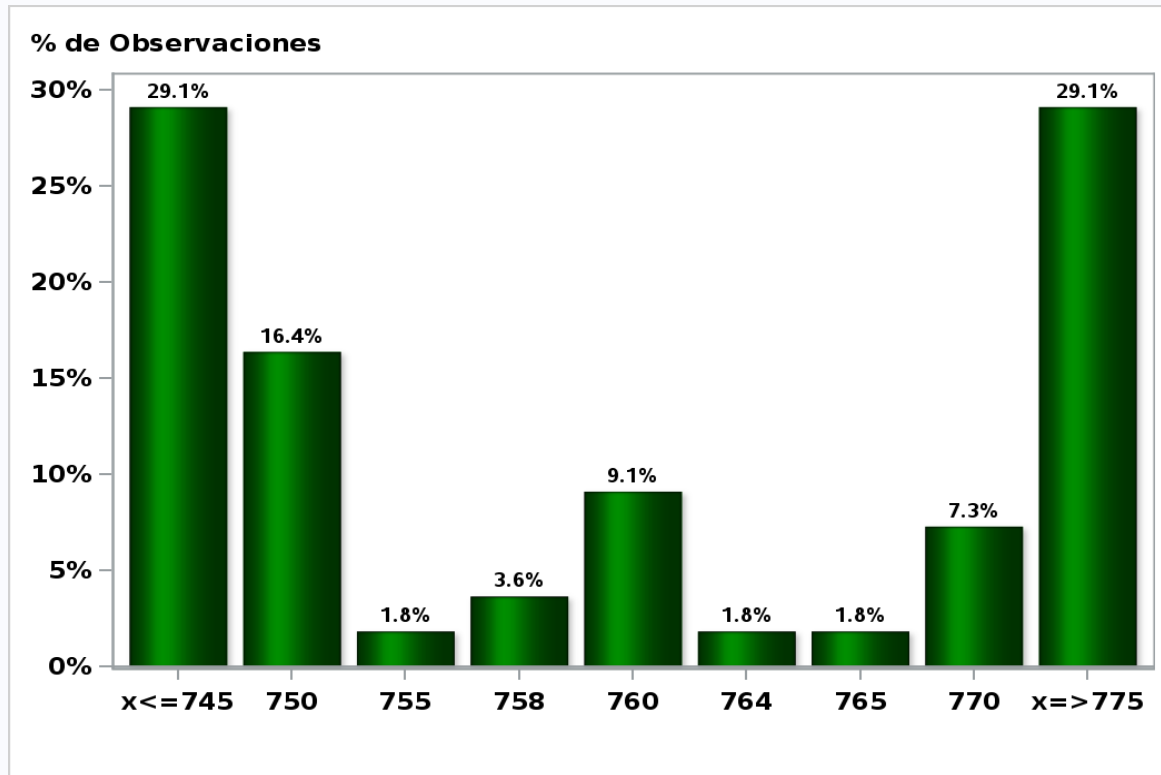
Answers: 57 Median: \$775



[Click to view summary table](#)

Monthly Survey On Expectations October 2020
Exchange Rate in twenty three months forward (CH \$ per US\$)

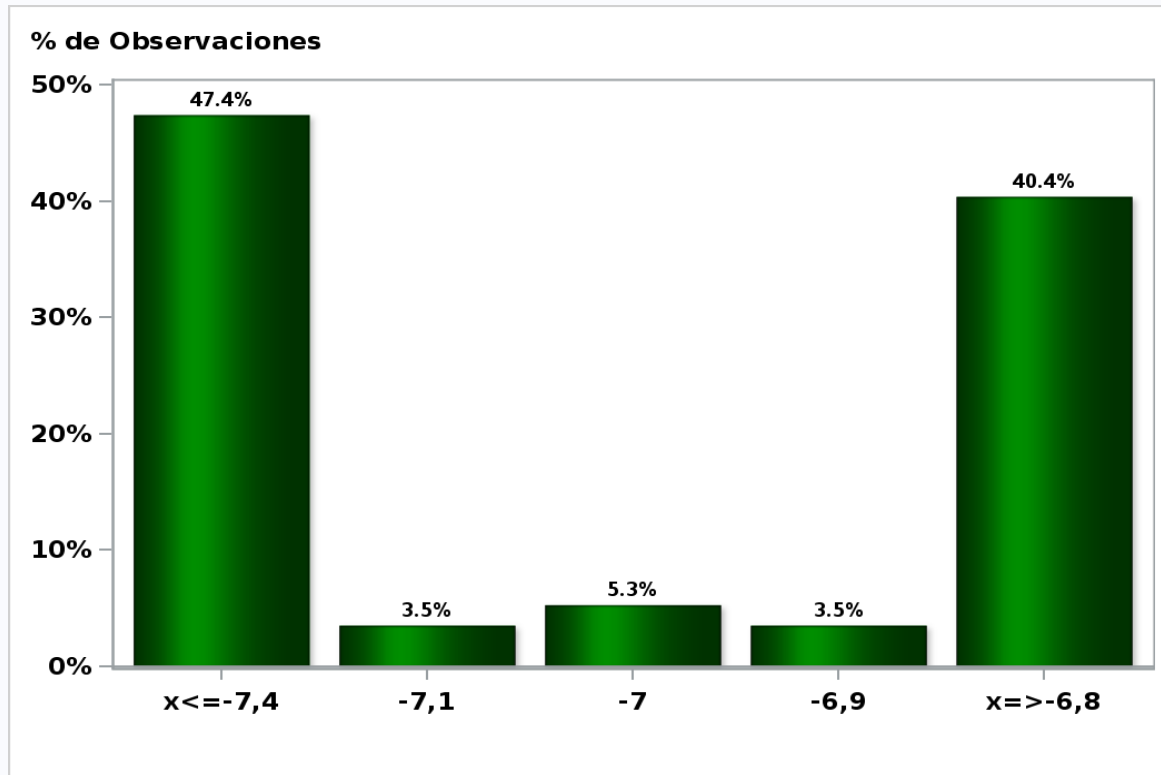
Answers: 55 Median: \$758



[Click to view summary table](#)

Monthly Survey On Expectations October 2020
IMACEC (Monthly Activity Index) one month ago

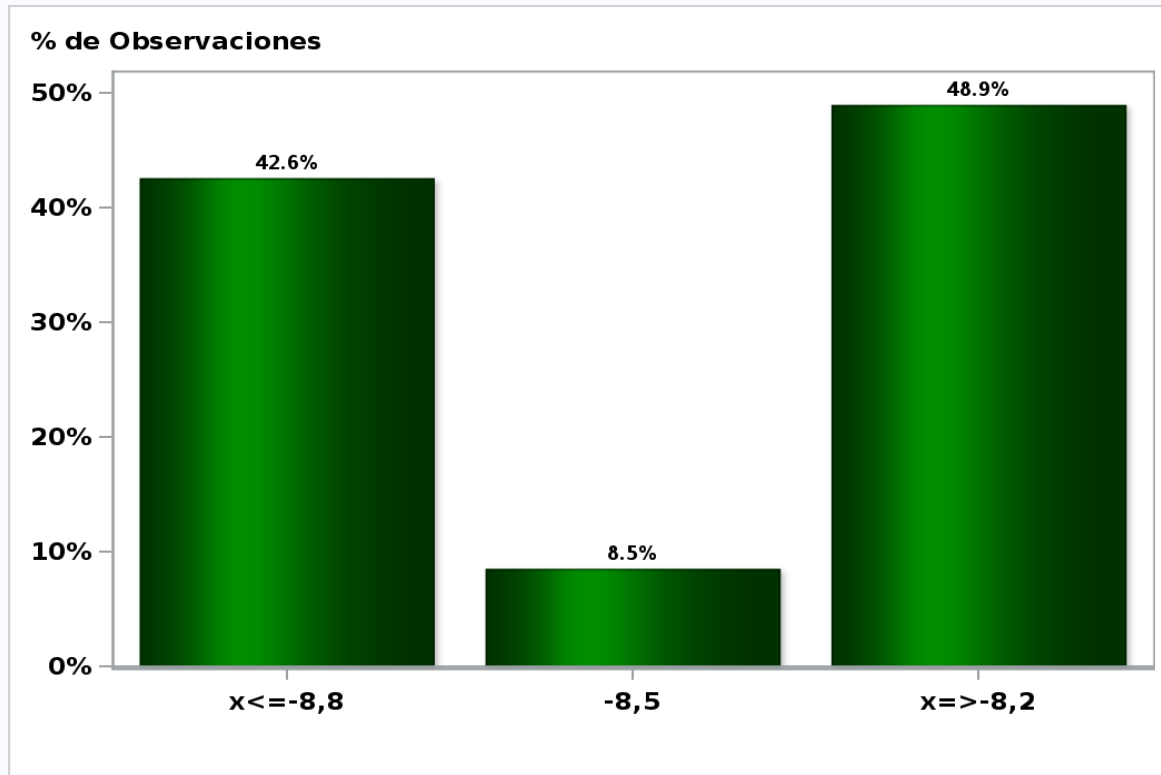
Answers: 57 Median: -7,1%



[Click to view summary table](#)

Monthly Survey On Expectations October 2020
IMACEC No Mining (Monthly Activity Index) one month ago

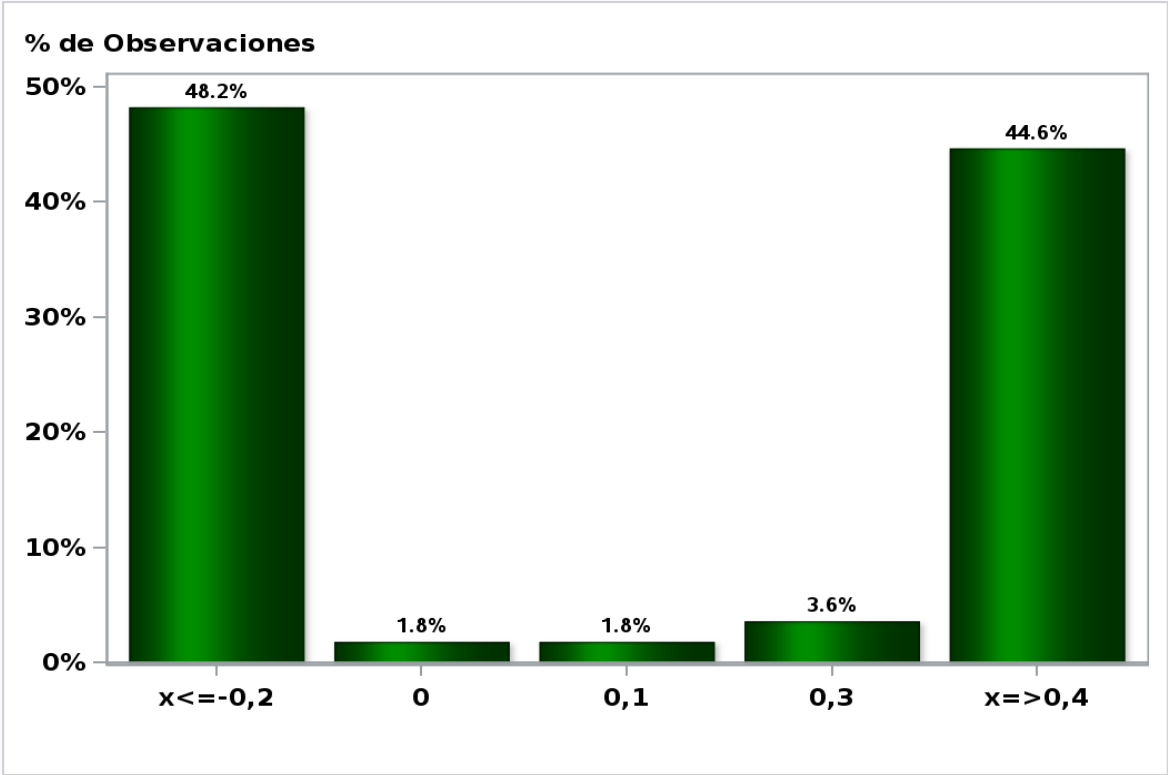
Answers: 47 Median: -8,5%



[Click to view summary table](#)

Monthly Survey On Expectations October 2020
GDP within calendar quarter of the survey

Answers: 56 Median: 0,1%

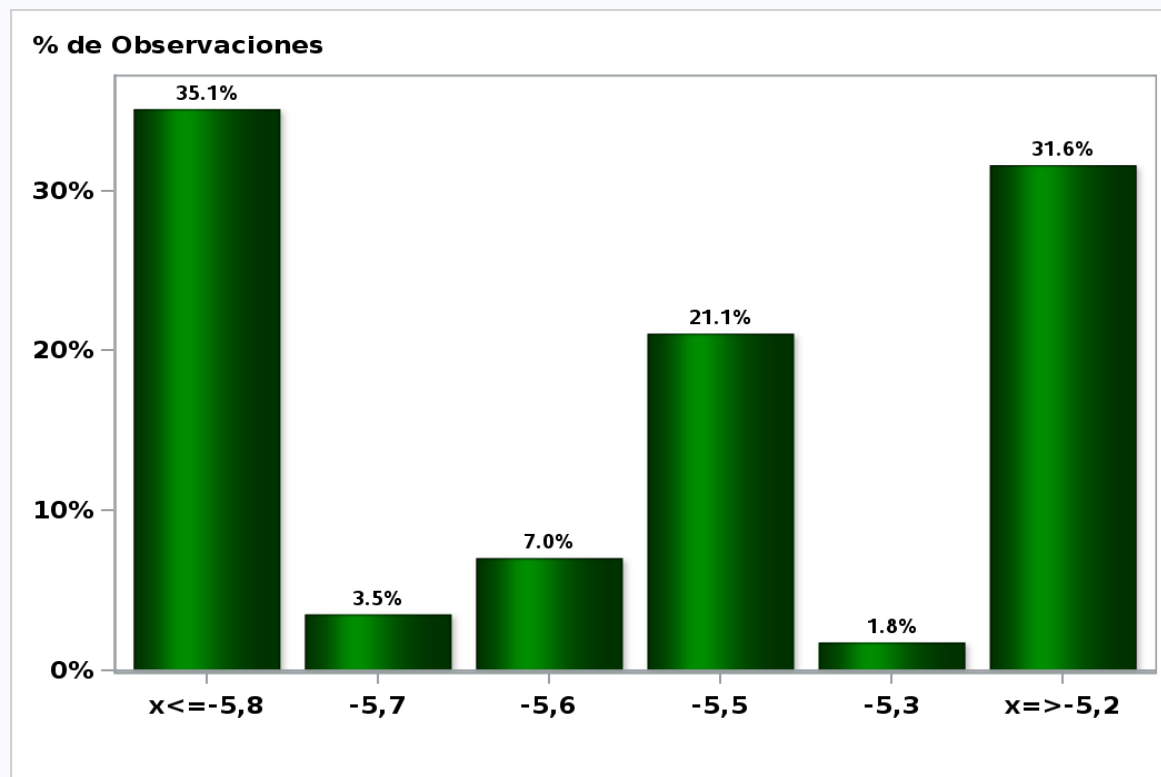


[Click to view summary table](#)

Monthly Survey On Expectations October 2020

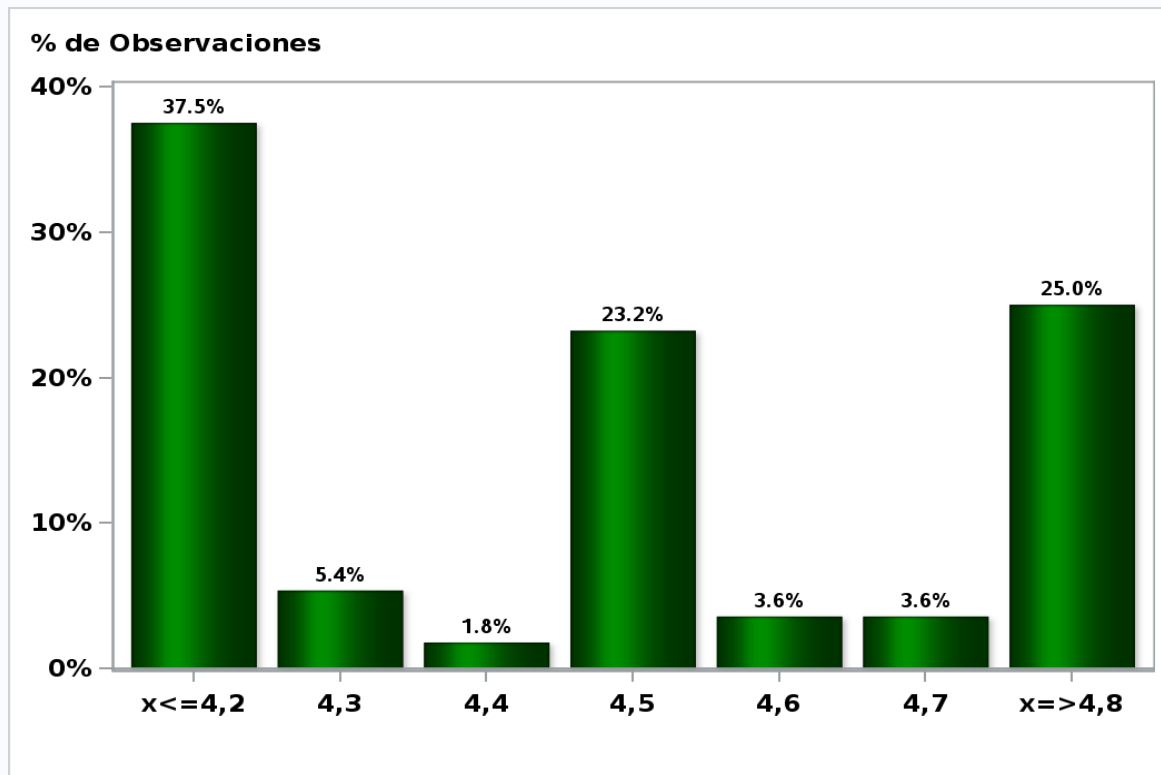
GDP year 2020 (12-month change)

Answers: 57 Median: -5,5%



[Click to view summary table](#)

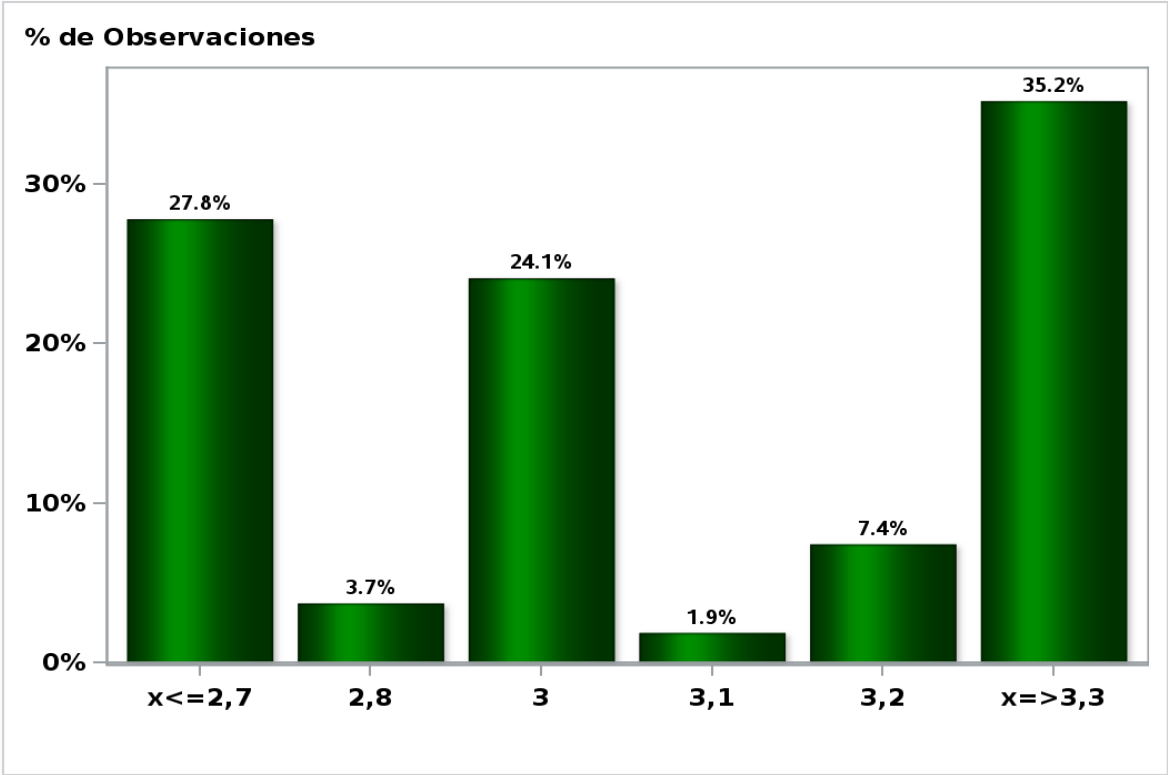
Monthly Survey On Expectations October 2020
GDP year 2021 (12-month change)
Answers: 56 Median: 4,5%



[Click to view summary table](#)

Monthly Survey On Expectations October 2020
GDP year 2022 (12-month change)

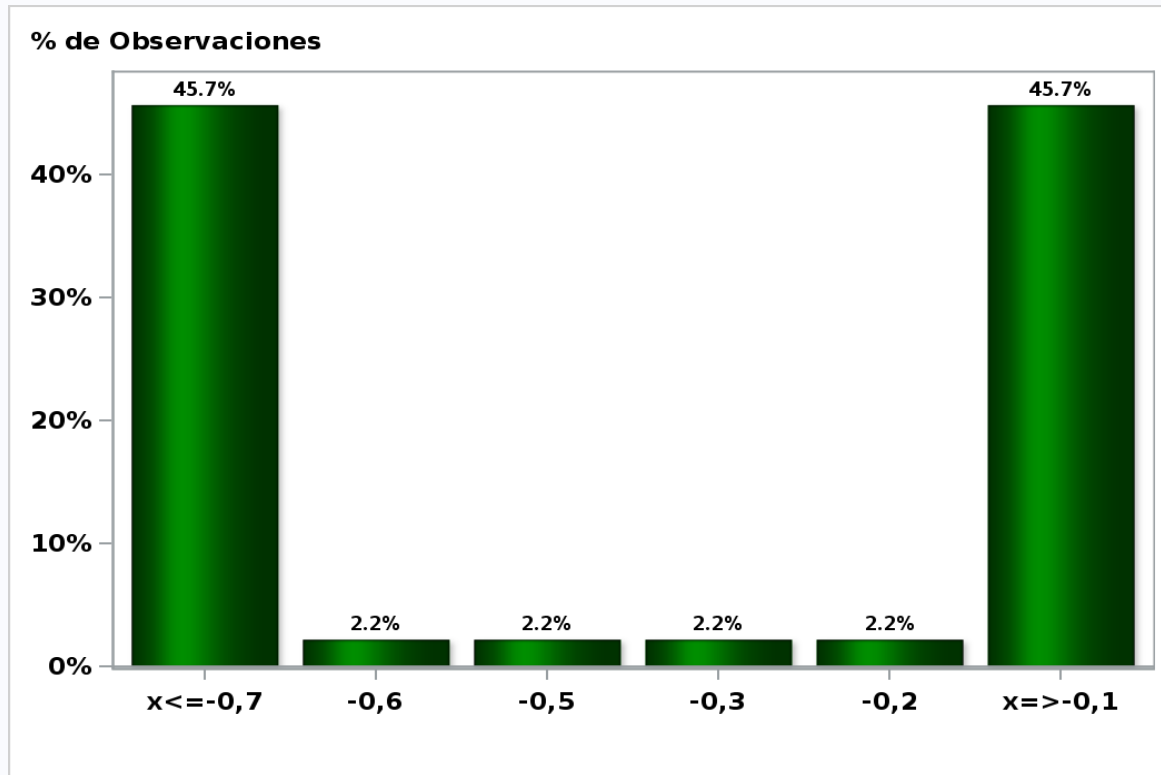
Answers: 54 Median: 3%



[Click to view summary table](#)

Monthly Survey On Expectations October 2020
GDP No Mining within calendar quarter of the survey

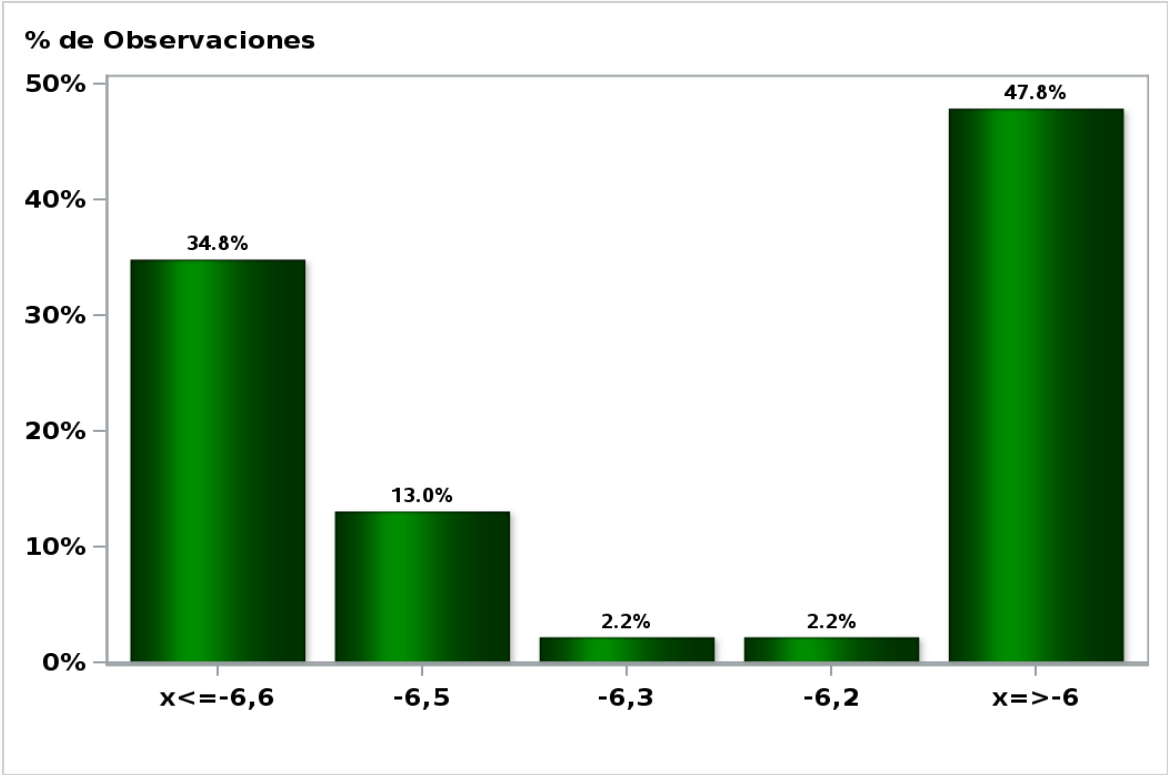
Answers: 46 Median: -0,4%



[Click to view summary table](#)

Monthly Survey On Expectations October 2020
GDP No Mining year 2020 (12-month change)

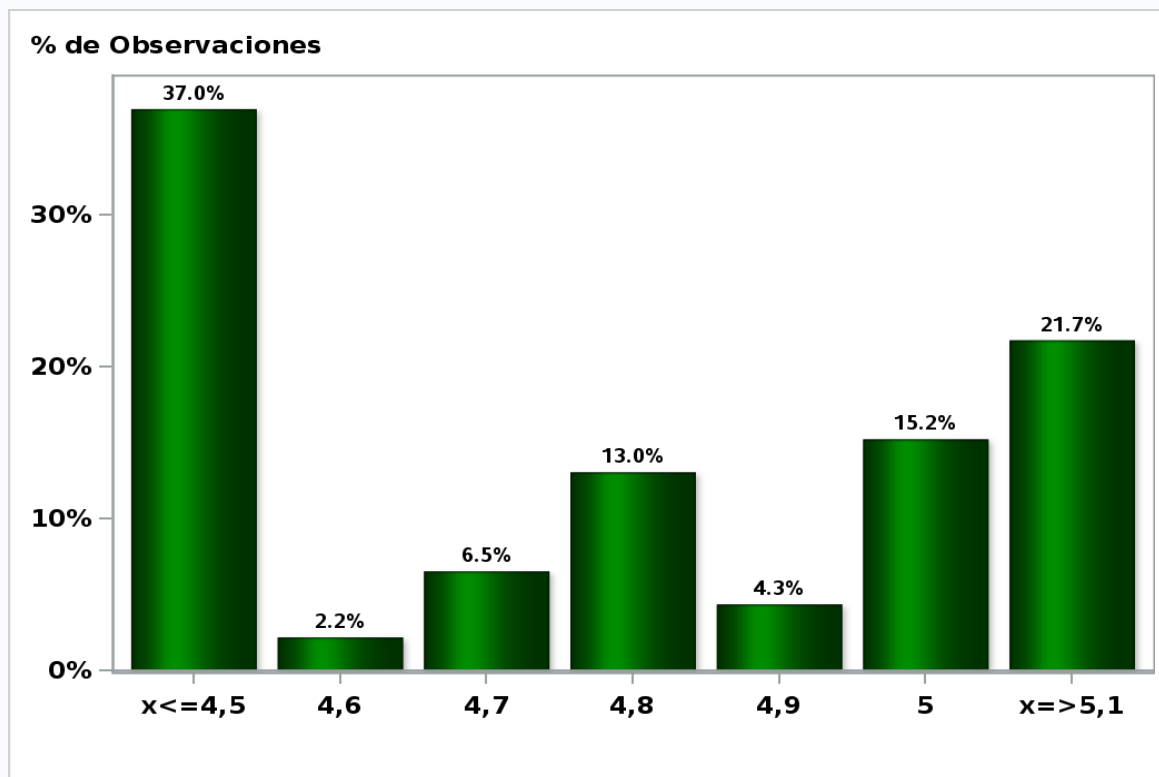
Answers: 46 Median: -6,3%



[Click to view summary table](#)

Monthly Survey On Expectations October 2020
GDP No Mining year 2021 (12-month change)

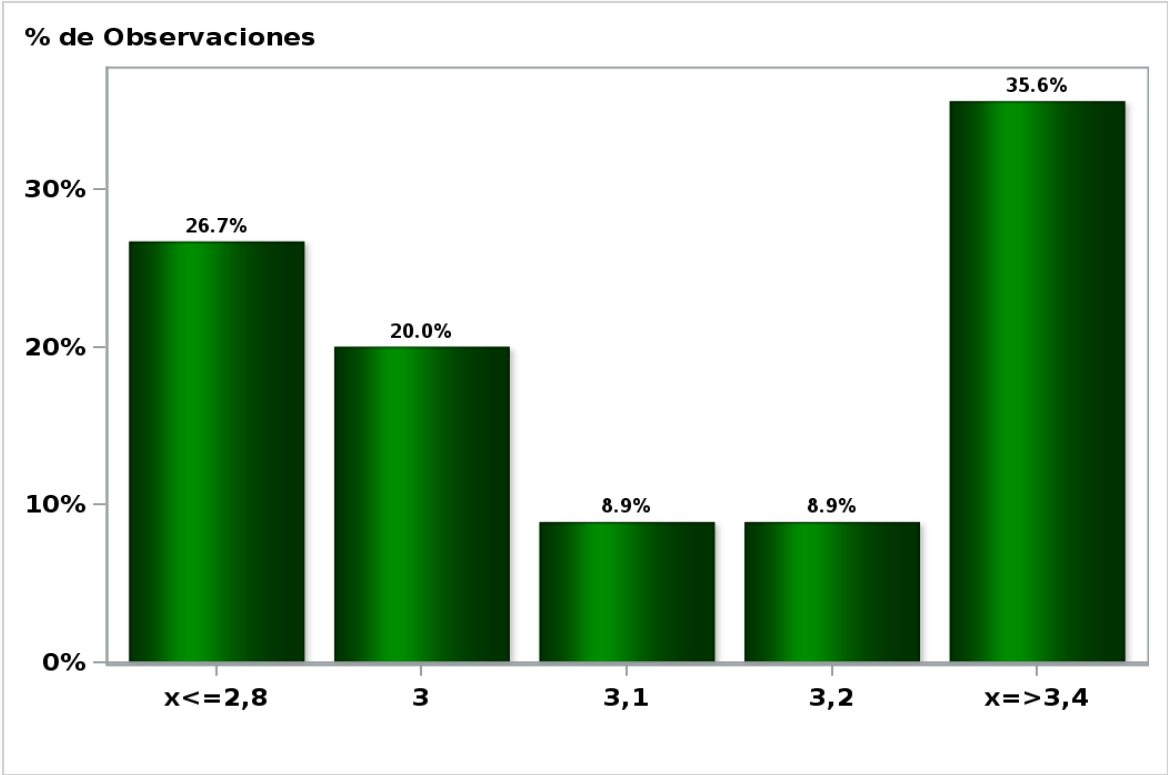
Answers: 46 Median: 4,8%



[Click to view summary table](#)

Monthly Survey On Expectations October 2020
GDP No Mining year 2022 (12-month change)

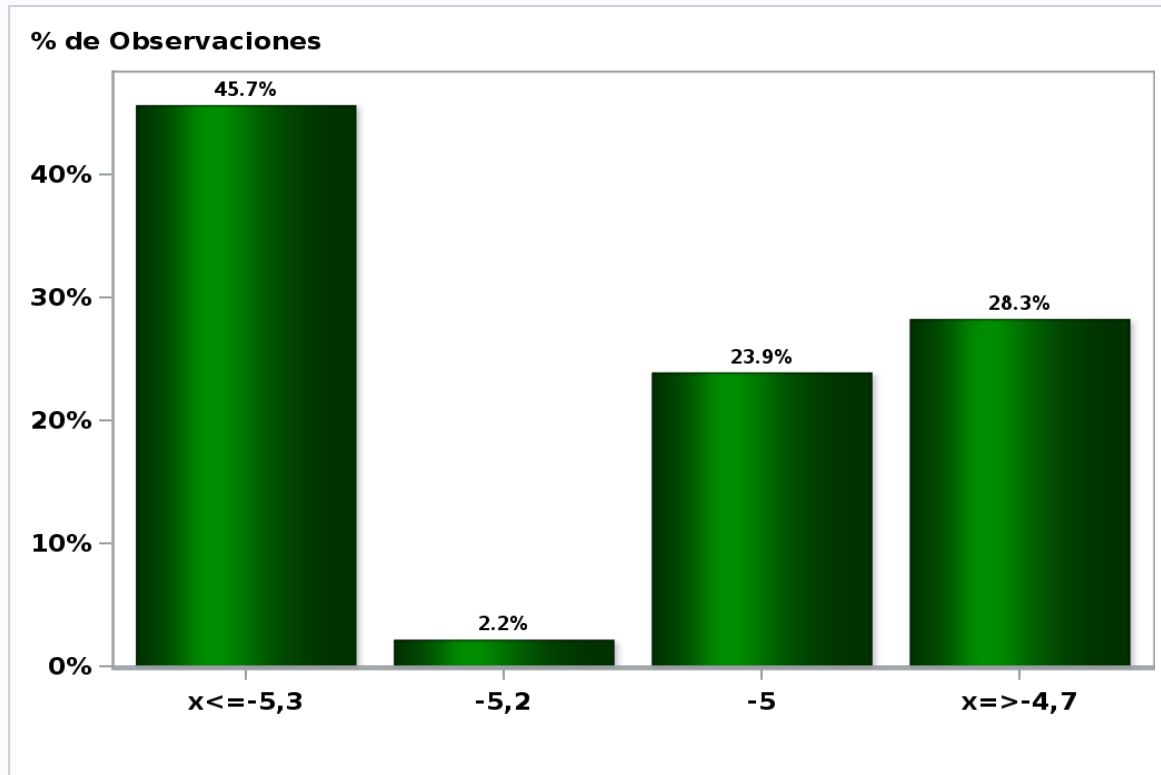
Answers: 45 Median: 3,1%



[Click to view summary table](#)

Monthly Survey On Expectations October 2020
HFC including NPO year 2020 (12-month change)

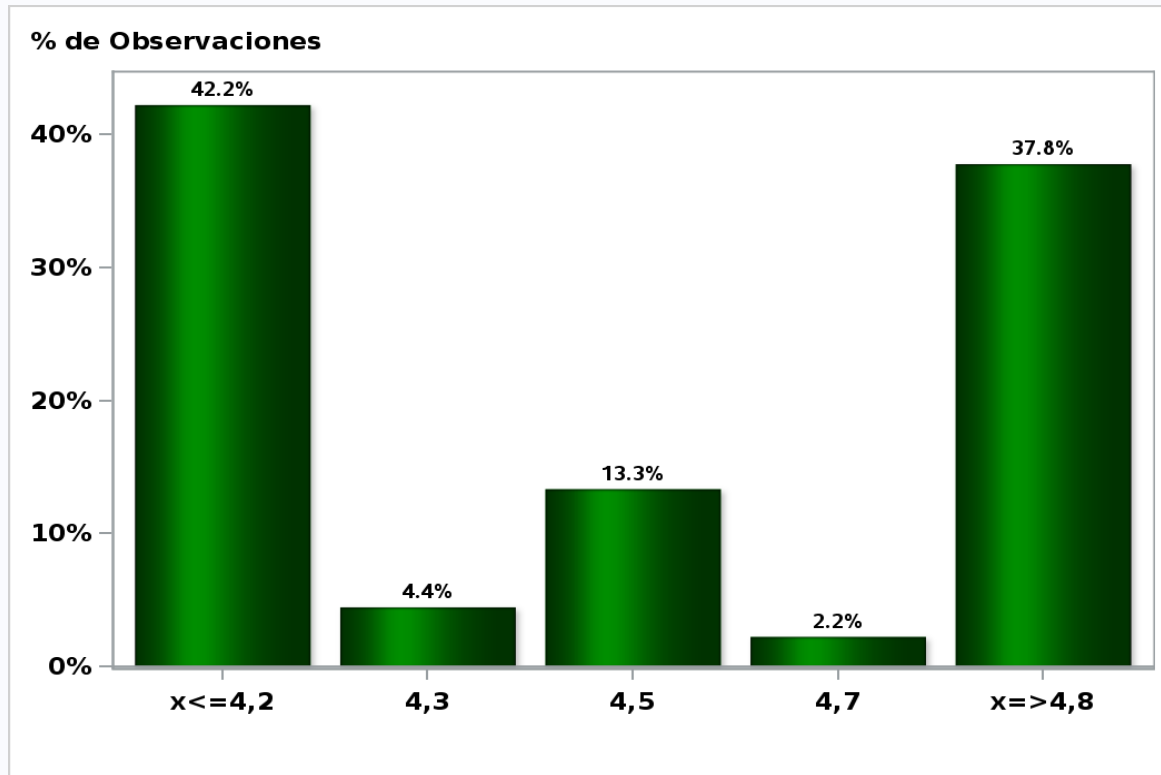
Answers: 46 Median: -5%



[Click to view summary table](#)

Monthly Survey On Expectations October 2020
HFC including NPO year 2021 (12-month change)

Answers: 45 Median: 4,5%

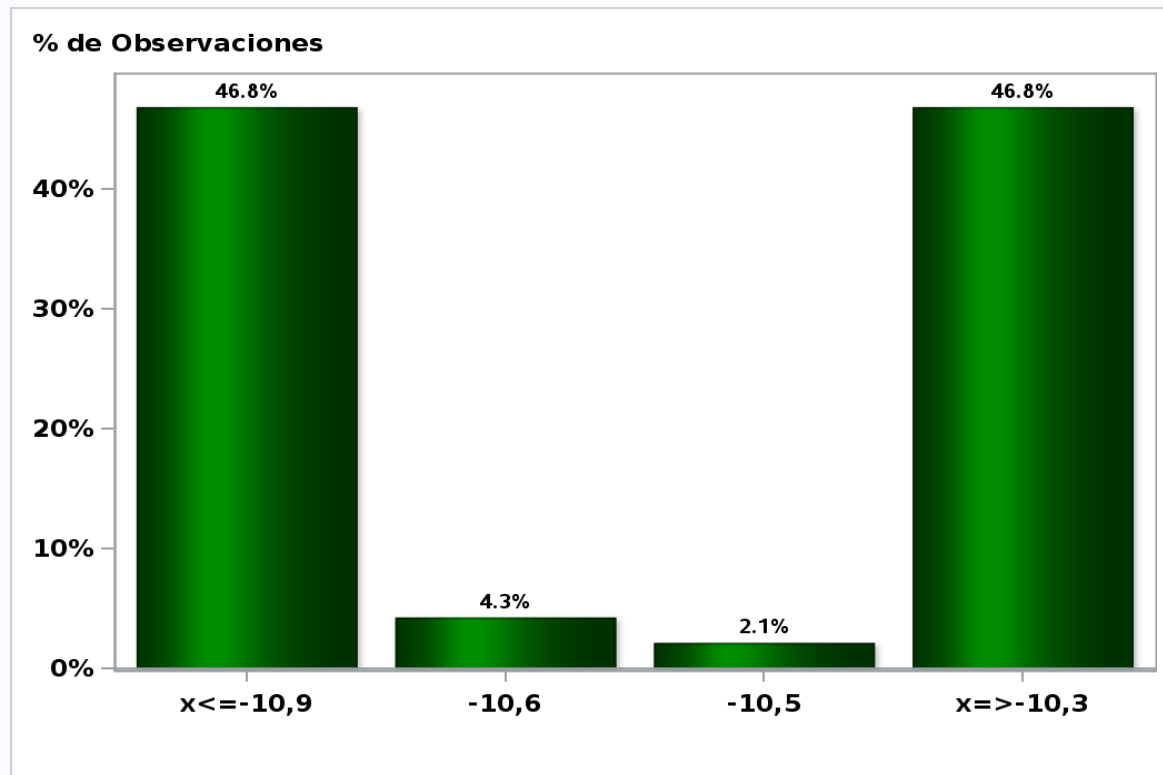


[Click to view summary table](#)

Monthly Survey On Expectations October 2020

GFCF year 2020 (12-month change)

Answers: 47 Median: -10,6%

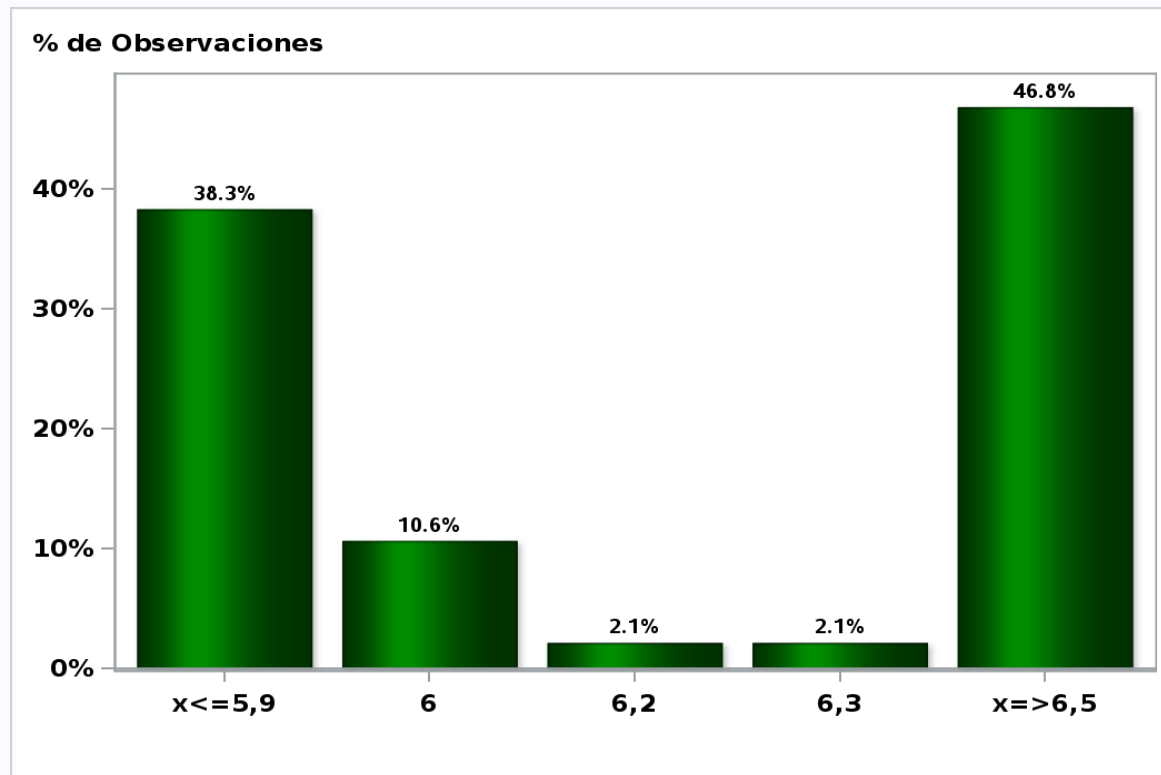


[Click to view summary table](#)

Monthly Survey On Expectations October 2020

GFCF year 2021 (12-month change)

Answers: 47 Median: 6,2%



[Click to view summary table](#)