

MONTHLY SURVEY ON EXPECTATIONS May 2021

Sent on: 5 May 2021

Deadline for responses: 10 May 2021

Variable	Median	Decile 1	Decile 9	Answers	Graph
01.Inflation (% change)					
Current month (monthly change)	0,30	0,20	0,40	53	Graph1
Next month (monthly change)	0,20	0,10	0,40	53	Graph2
In eleven months (12-month change)	3,00	2,60	3,40	53	Graph3
In twenty three months (12-month change)	3,00	3,00	3,20	53	Graph4
In thirty five months (12-month change)	3,00	3,00	3,00	53	Graph5
December 2021 (12-month change)	3,30	3,00	3,50	53	Graph6
December 2022 (12-month change)	3,00	3,00	3,30	53	Graph7
02.Monetary Policy rate target (%) (*)					
Following meeting	0,50	0,50	0,50	53	Graph8
Second following meeting	0,50	0,50	0,50	53	Graph9
In five months	0,50	0,50	0,50	53	Graph10
December 2021	0,50	0,50	0,75	53	Graph11
In eleven months	0,75	0,50	1,25	53	Graph12
In seventeen months	1,25	0,75	1,75	53	Graph13
In twenty three months	2,00	1,25	3,00	52	Graph14
In thirty five months	2,50	2,00	3,50	52	Graph15
03.5-Year BCU (%) (*)					
In two months	-0,50	-1,10	0,00	44	Graph16
In eleven months	0,00	-0,70	0,50	44	Graph17
In twenty three months forward	0,40	-0,10	1,50	43	Graph18
04.5-Year BCP (%) (*)					
In two months	2,50	1,70	2,90	44	Graph19
In eleven months	2,90	2,00	3,50	44	Graph20
In twenty three months forward	3,30	2,50	4,00	43	Graph21
05.Exchange Rate (CH \$ per US\$ 1) (*)					
In two months	703,50	690,00	727,00	52	Graph22
In eleven months	700,00	670,00	740,00	52	Graph23
In twenty three months forward	700,00	650,00	740,00	52	Graph24
06.IMACEC (Monthly Activity Index)					
One month ago	9,50	3,00	15,00	51	Graph25
07.IMACEC No Mining (monthly activity index)					
One month ago	9,10	1,90	16,00	42	Graph26
08.GDP (12-month change)					
Within calendar quarter of the survey	12,00	6,00	15,50	52	Graph27
Year 2021	6,20	5,00	7,40	53	Graph28
Year 2022	3,50	3,00	4,20	52	Graph29
Year 2023	3,00	2,50	3,50	51	Graph30
09.GDP No Mining (12-month change)					
Within calendar quarter of the survey	12,30	6,40	16,00	42	Graph31
Year 2021	6,50	4,80	7,50	42	Graph32
Year 2022	3,50	2,80	4,40	42	Graph33
Year 2023	3,00	2,50	3,80	42	Graph34
10.HFC including NPO (12-month change)					
Year 2021	7,40	4,90	11,00	43	Graph35
Year 2022	3,50	2,50	4,70	43	Graph36
11.GFCF (12-month change)					
Year 2021	8,00	4,50	10,00	43	Graph37
Year 2022	4,50	3,50	6,10	43	Graph38
12.Structural Parameters - long-term average					
Inflation (12-month change)	3,00	3,00	3,10	45	Graph39
Monetary Policy rate target	3,25	2,50	4,00	43	Graph40
Exchange Rate (12-month change)	1,00	-1,00	5,00	41	Graph41
GDP (12-month change)	2,80	2,00	3,20	44	Graph42

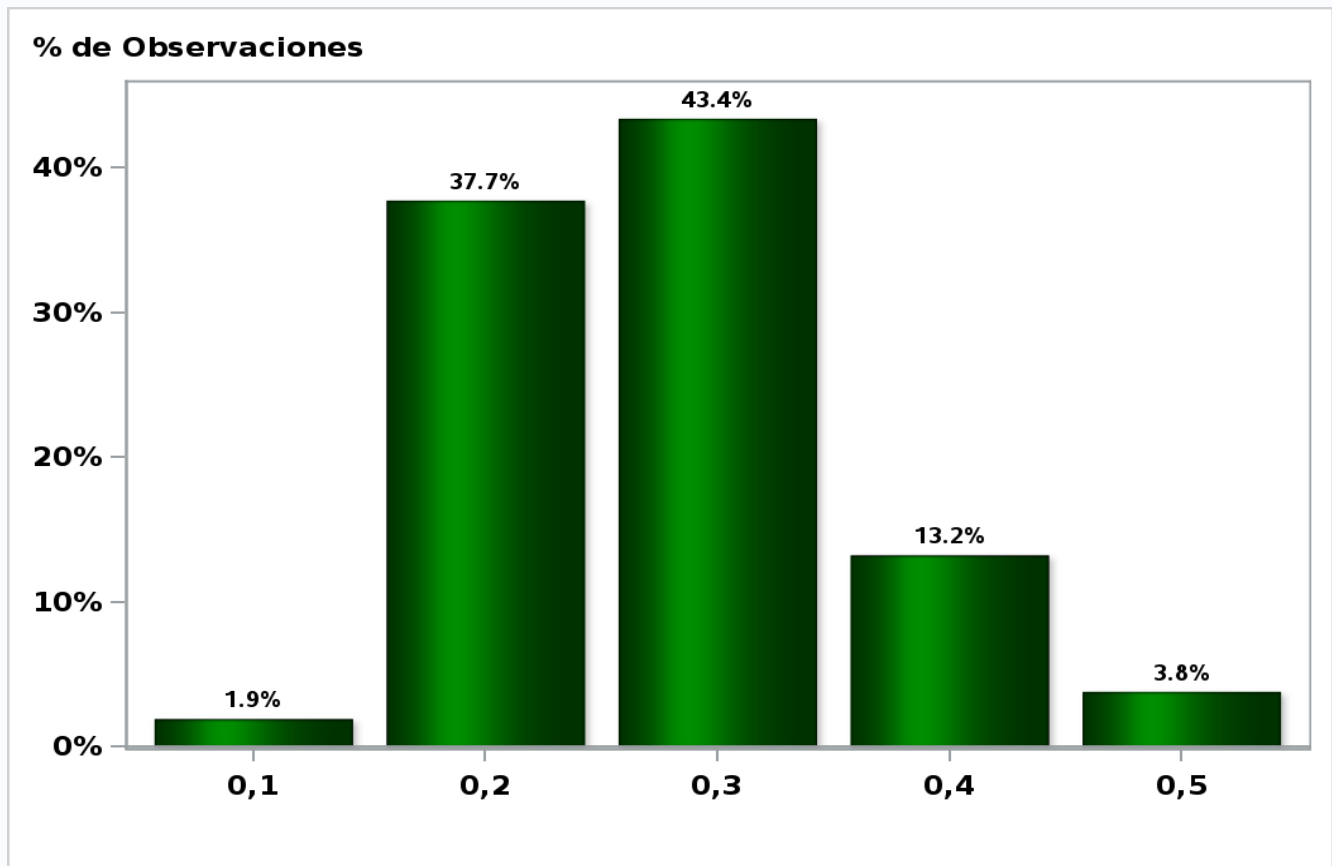
(*) End of the month.

Monthly survey of selected academics, consultants, and executives or advisors of financial institutions and corporations. It is completed the day after the publication of the CPI and it is published the day after its reception, at 8:30 hrs. approximately(www.bcentral.cl, Statistics section, Economic Surveys, Website: <https://www.bcentral.cl/en/areas/economic-surveys>)

The survey period comprises the week prior to publication

Monthly Survey On Expectations May 2021
Inflation current month (monthly change)

Answers: 53 Median: 0,3%

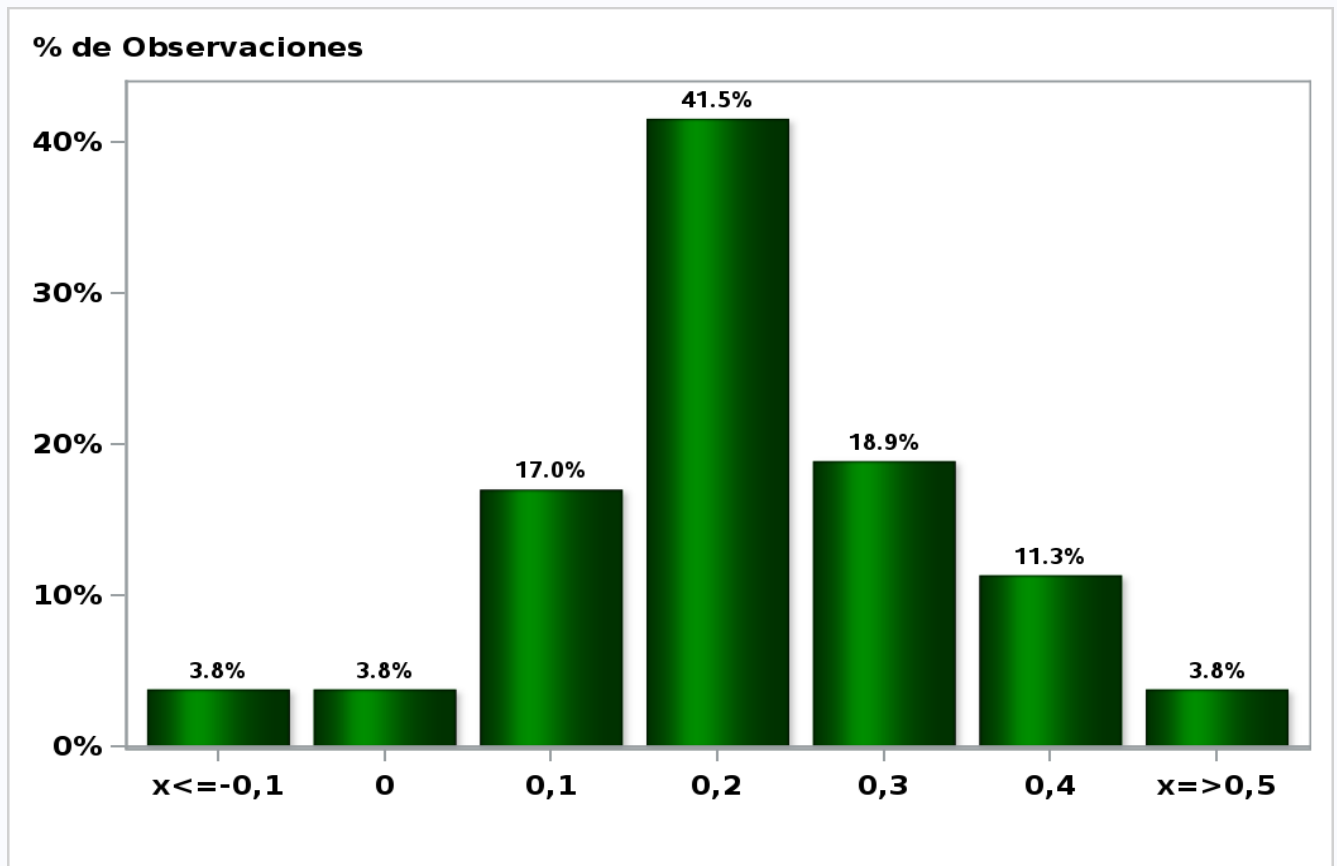


[Click to view summary table](#)

Monthly Survey On Expectations May 2021

Inflation next month (monthly change)

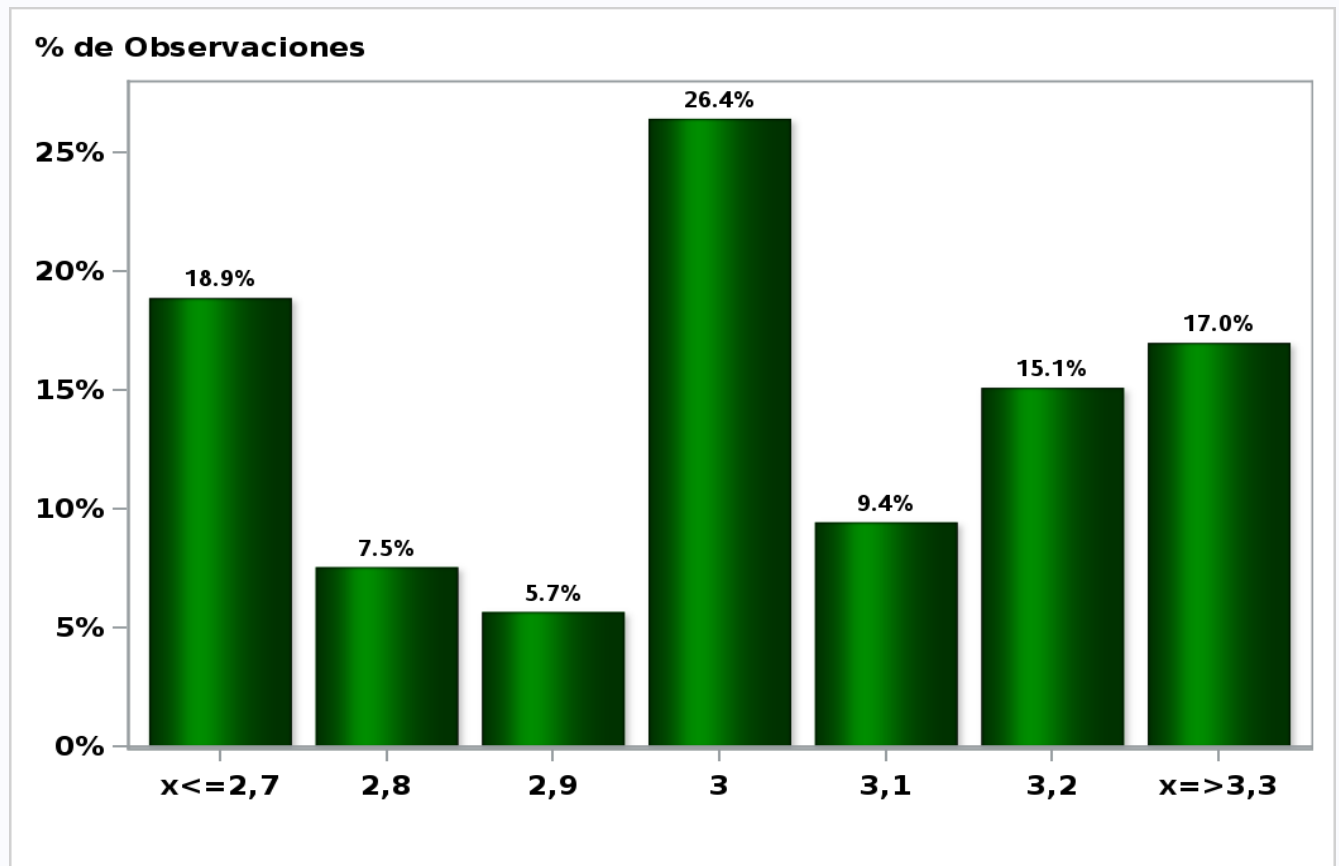
Answers: 53 Median: 0,2%



[Click to view summary table](#)

Monthly Survey On Expectations May 2021
Inflation in eleven months (12-month change)

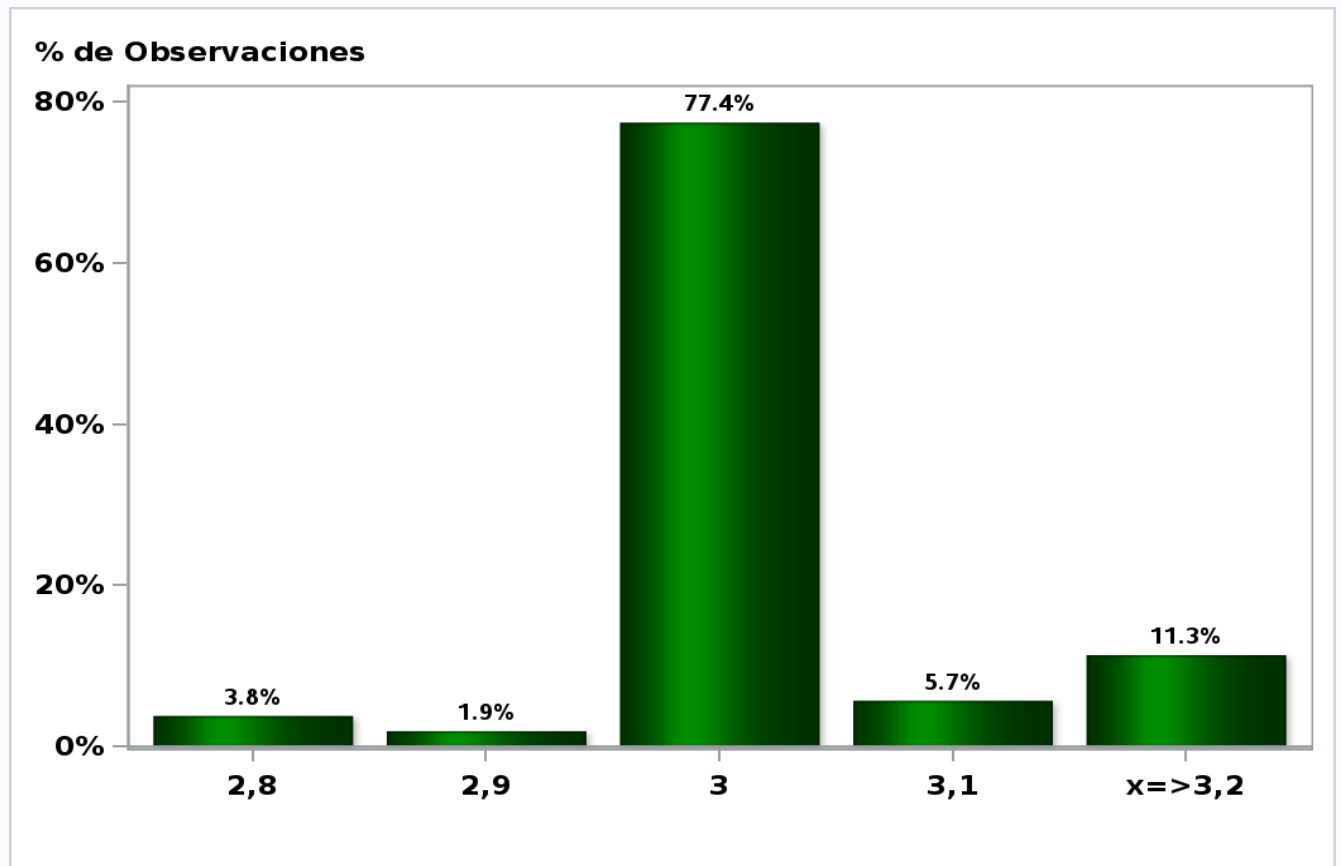
Answers: 53 Median: 3%



[Click to view summary table](#)

Monthly Survey On Expectations May 2021
Inflation in twenty three months (12-month change)

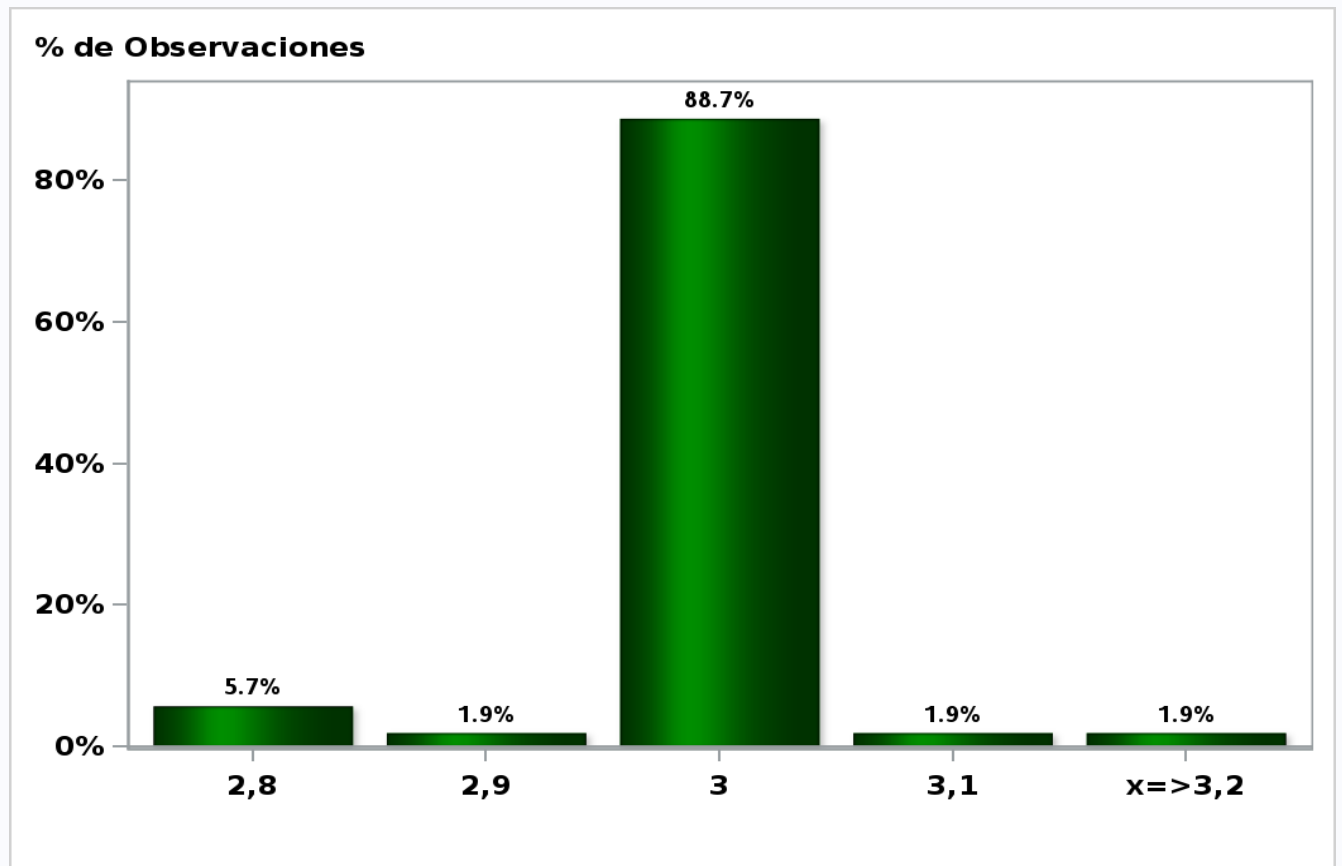
Answers: 53 Median: 3%



[Click to view summary table](#)

Monthly Survey On Expectations May 2021
Inflation in thirty five months (12-month change)

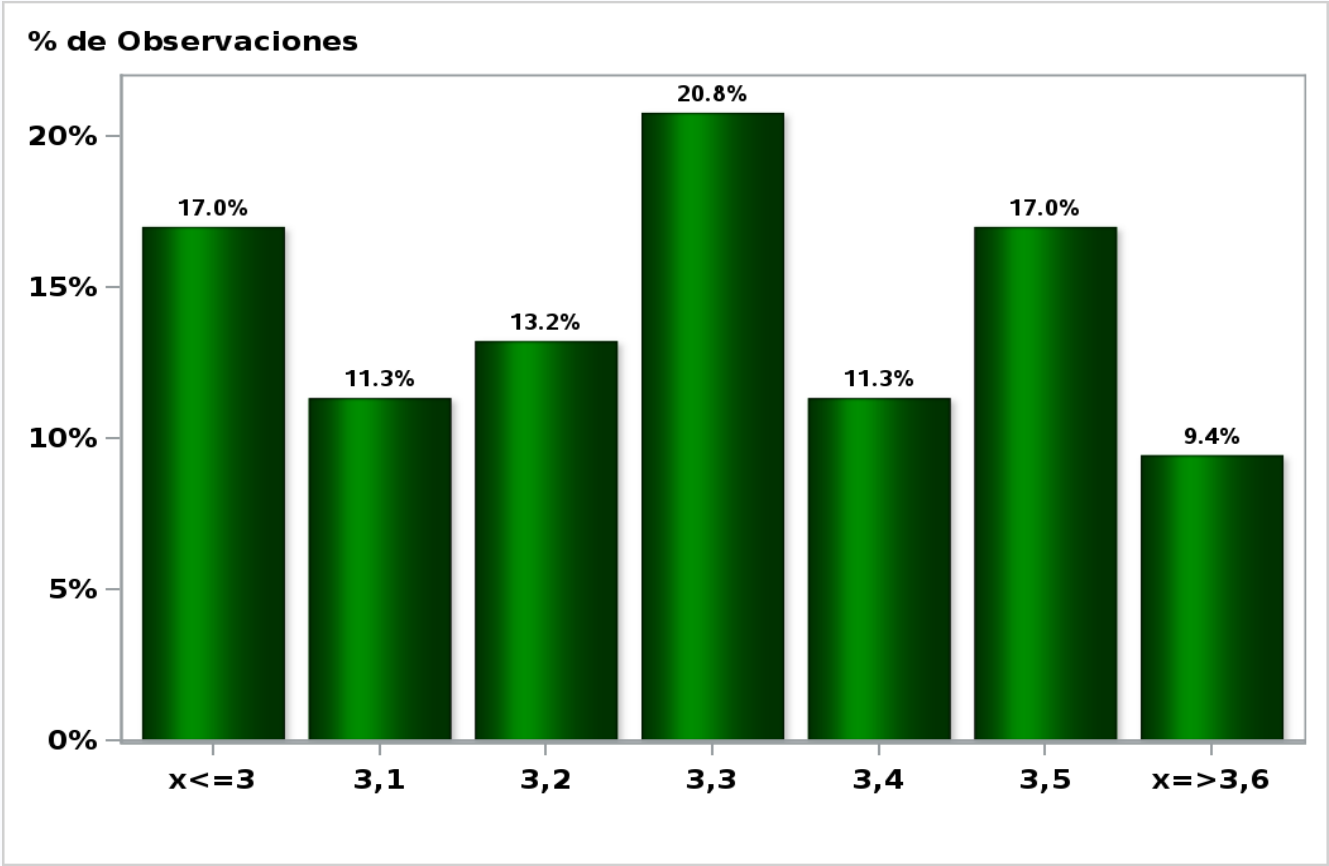
Answers: 53 Median: 3%



[Click to view summary table](#)

**Monthly Survey On Expectations May 2021
Inflation december 2021 (12-month change)**

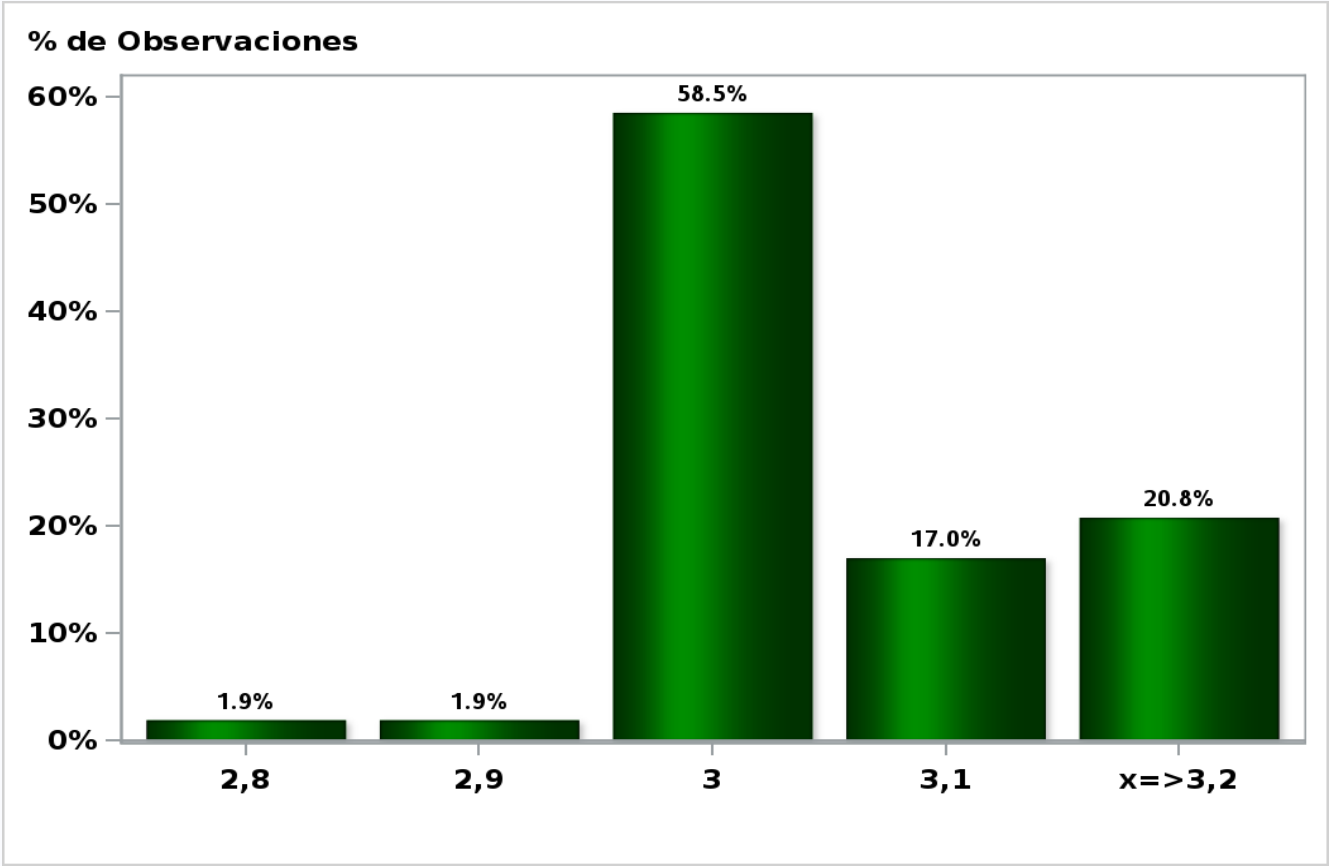
Answers: 53 Median: 3,3%



[Click to view summary table](#)

**Monthly Survey On Expectations May 2021
Inflation december 2022 (12-month change)**

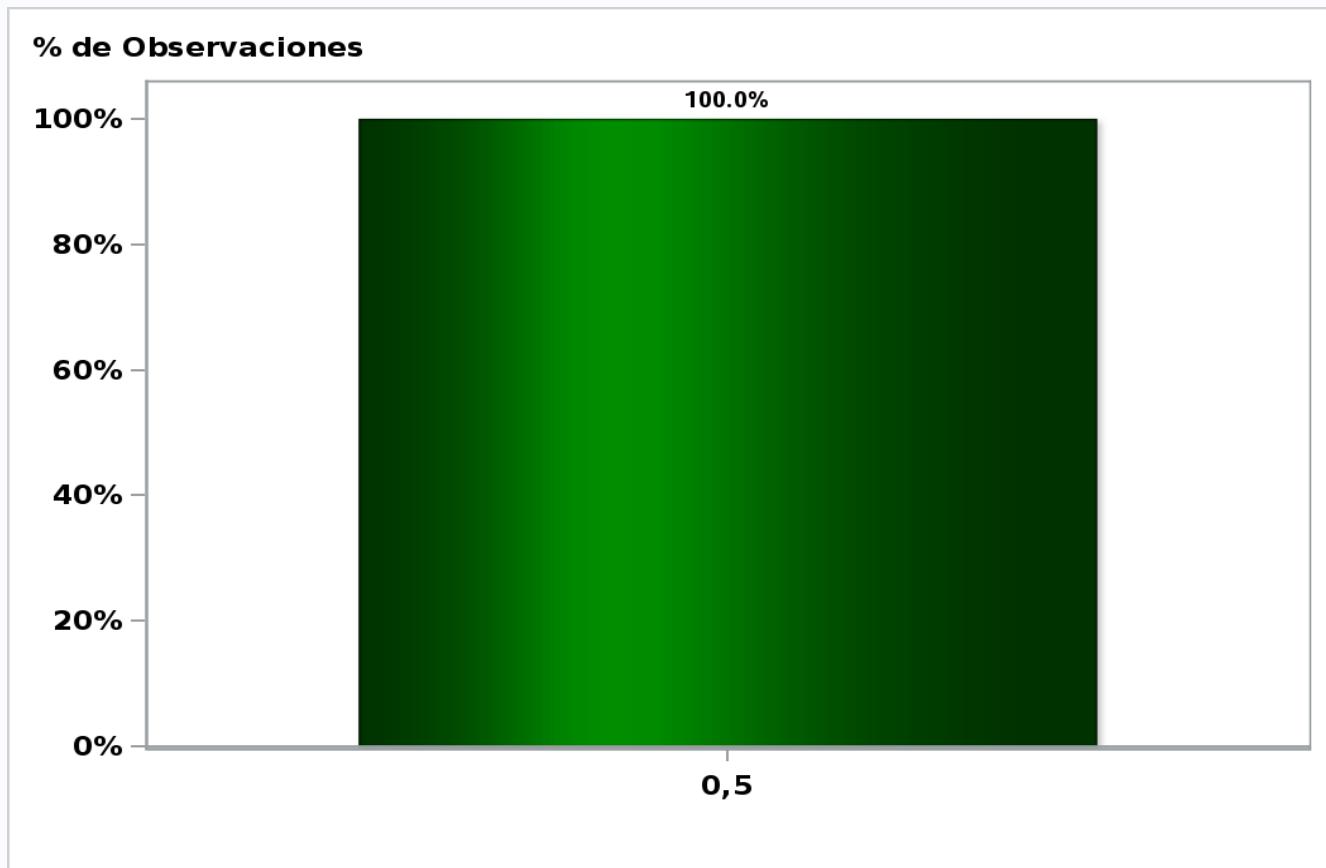
Answers: 53 Median: 3%



[Click to view summary table](#)

Monthly Survey On Expectations May 2021
Monetary Policy rate target following meeting

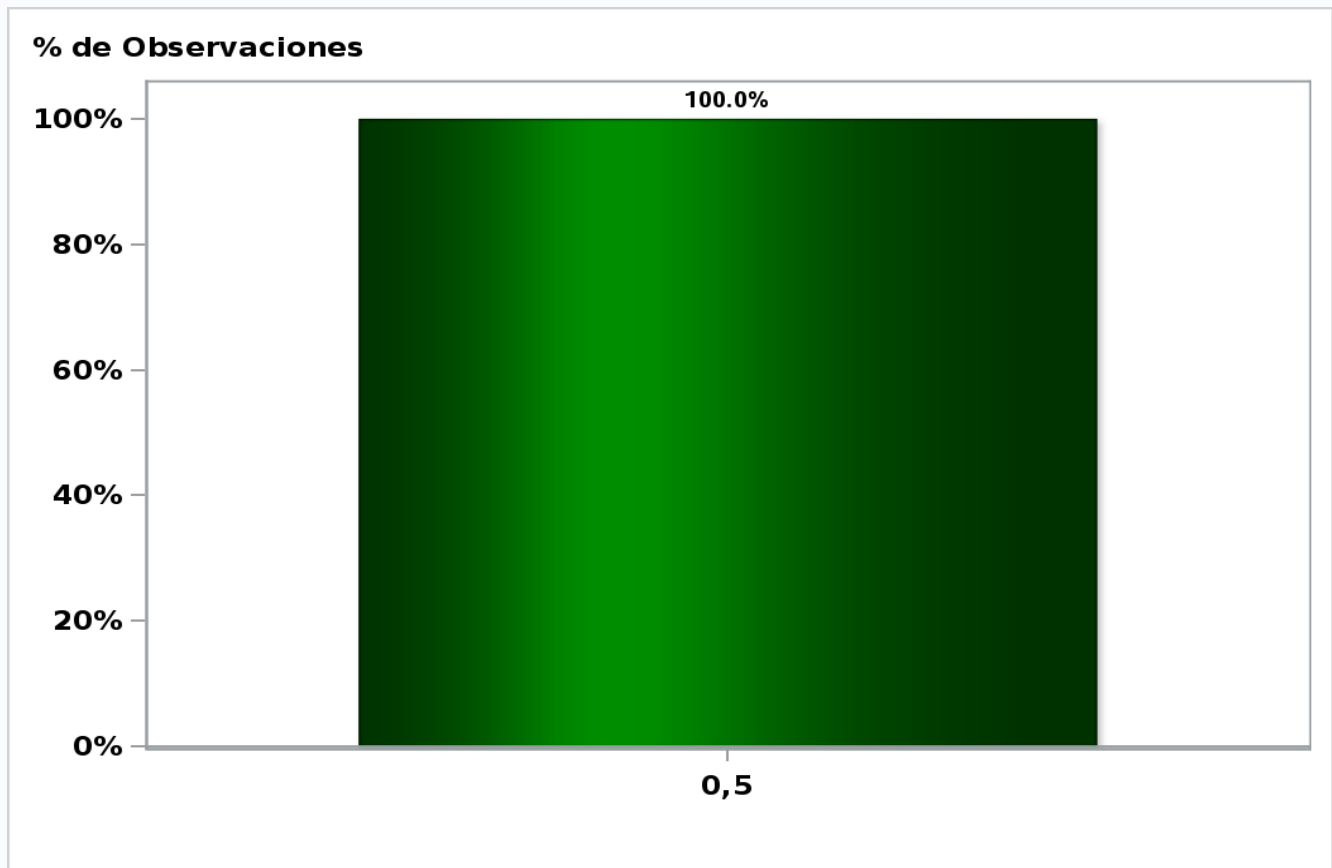
Answers: 53 Median: 0,5%



[Click to view summary table](#)

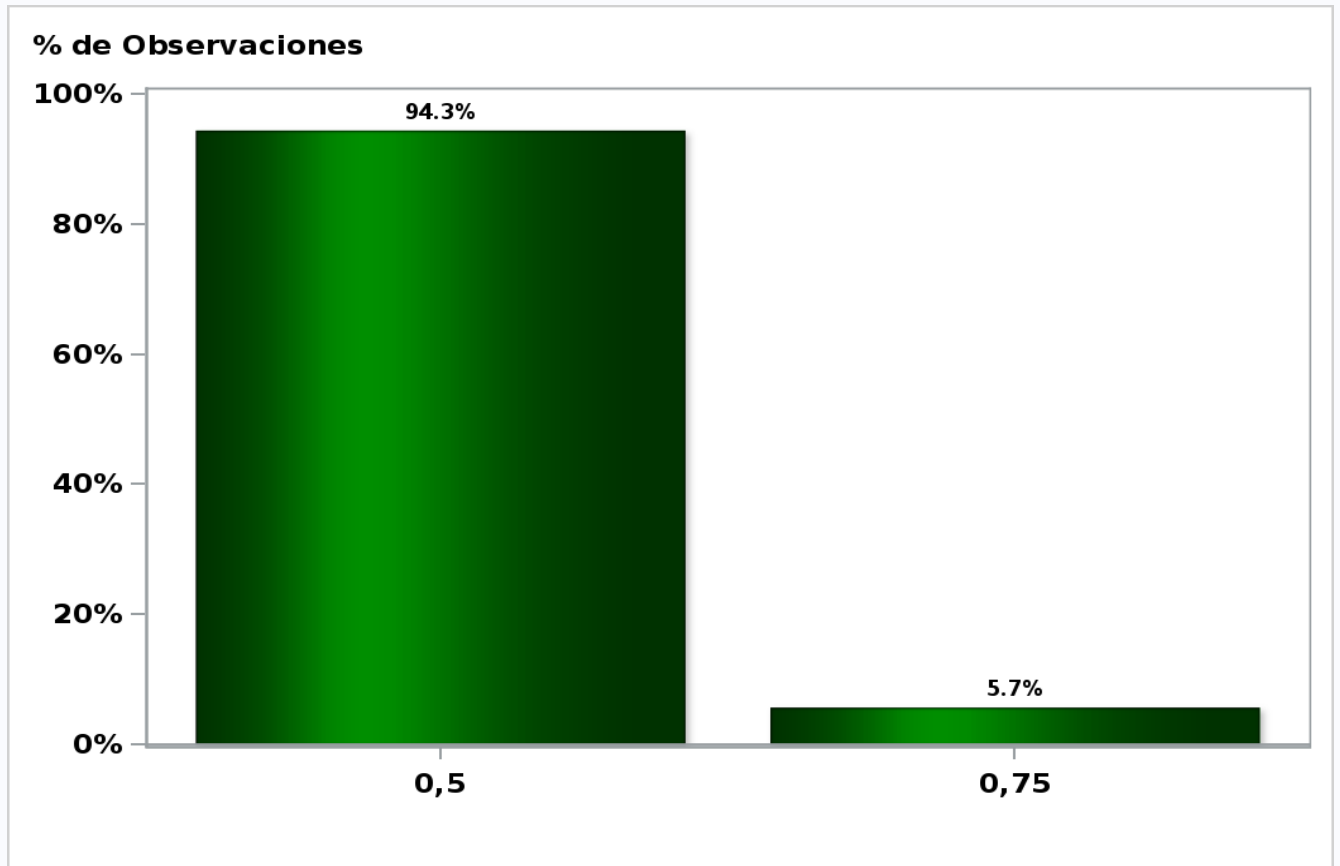
Monthly Survey On Expectations May 2021
Monetary Policy rate target second following meeting

Answers: 53 Median: 0,5%



[Click to view summary table](#)

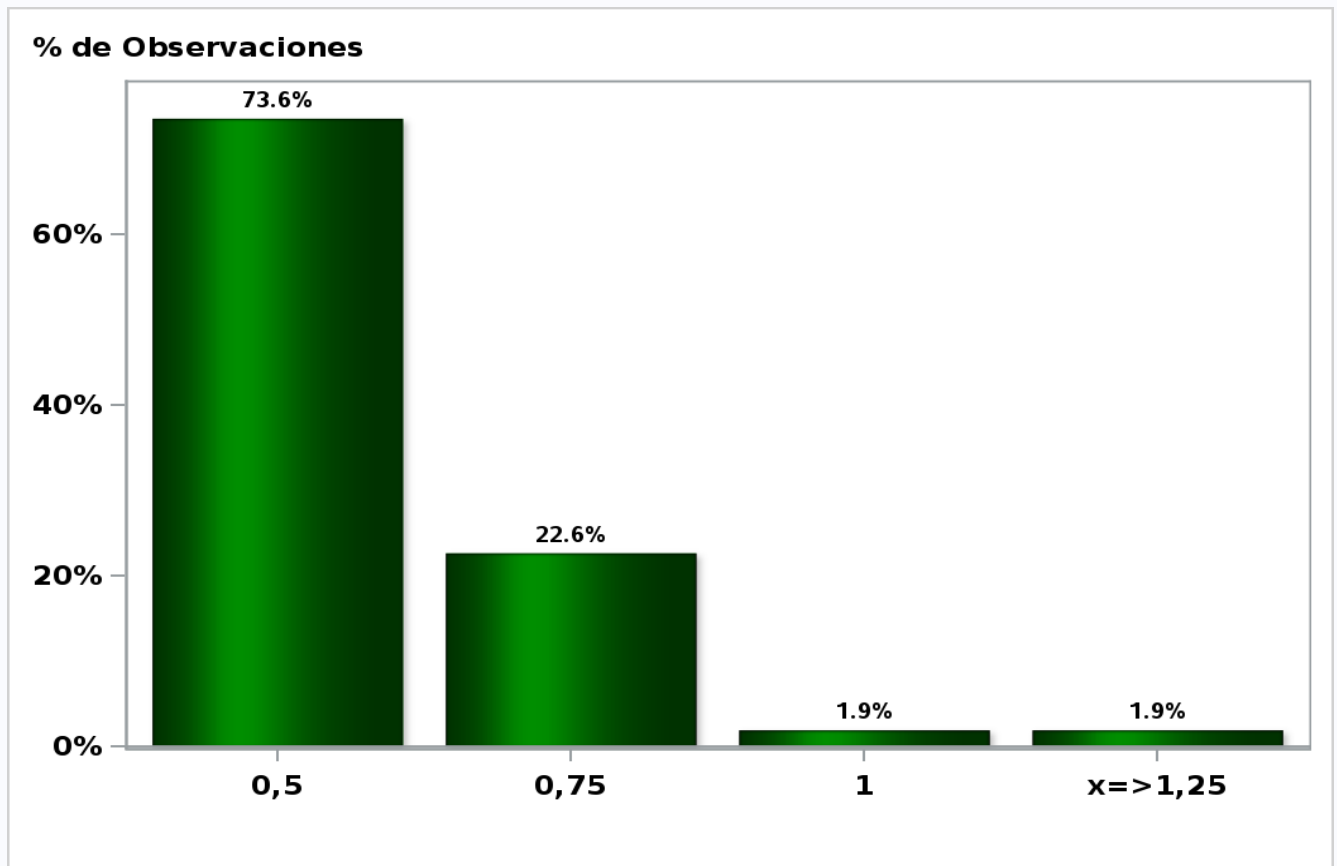
Monthly Survey On Expectations May 2021
Monetary Policy rate target In five months
Answers: 53 Median: 0,5%



[Click to view summary table](#)

Monthly Survey On Expectations May 2021
Monetary Policy rate target december 2021

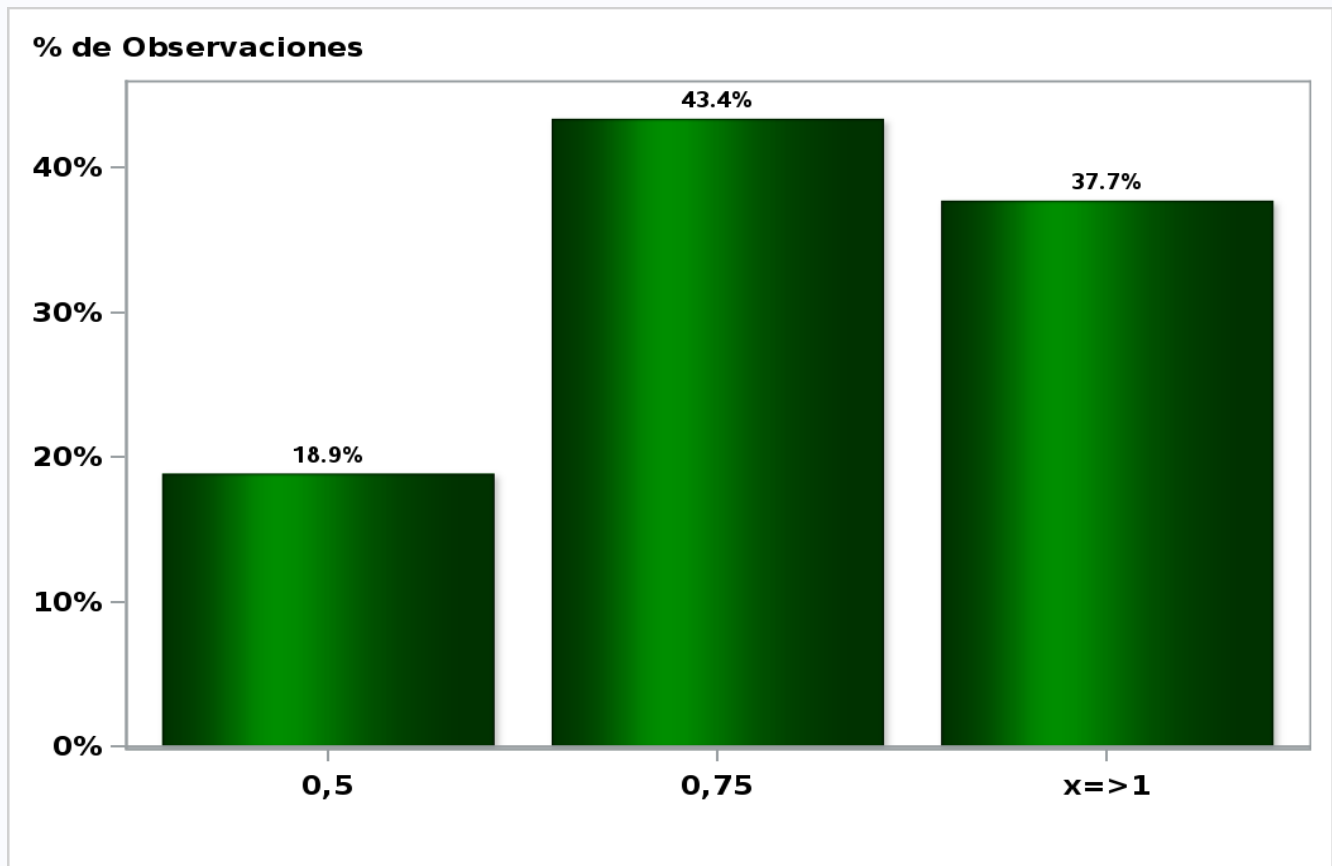
Answers: 53 Median: 0,5%



[Click to view summary table](#)

Monthly Survey On Expectations May 2021
Monetary Policy rate target in eleven months

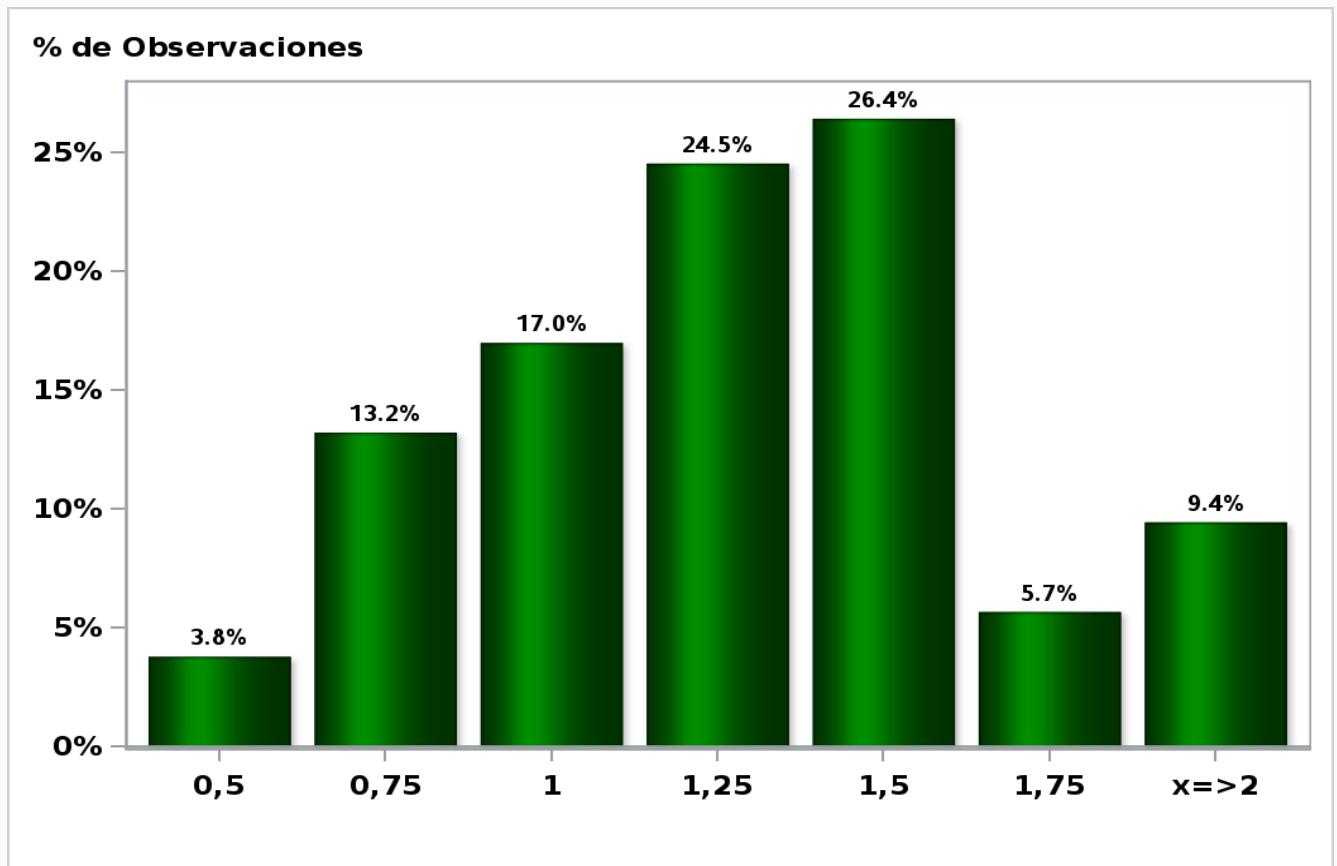
Answers: 53 Median: 0,75%



[Click to view summary table](#)

Monthly Survey On Expectations May 2021
Monetary Policy rate target in seventeen months

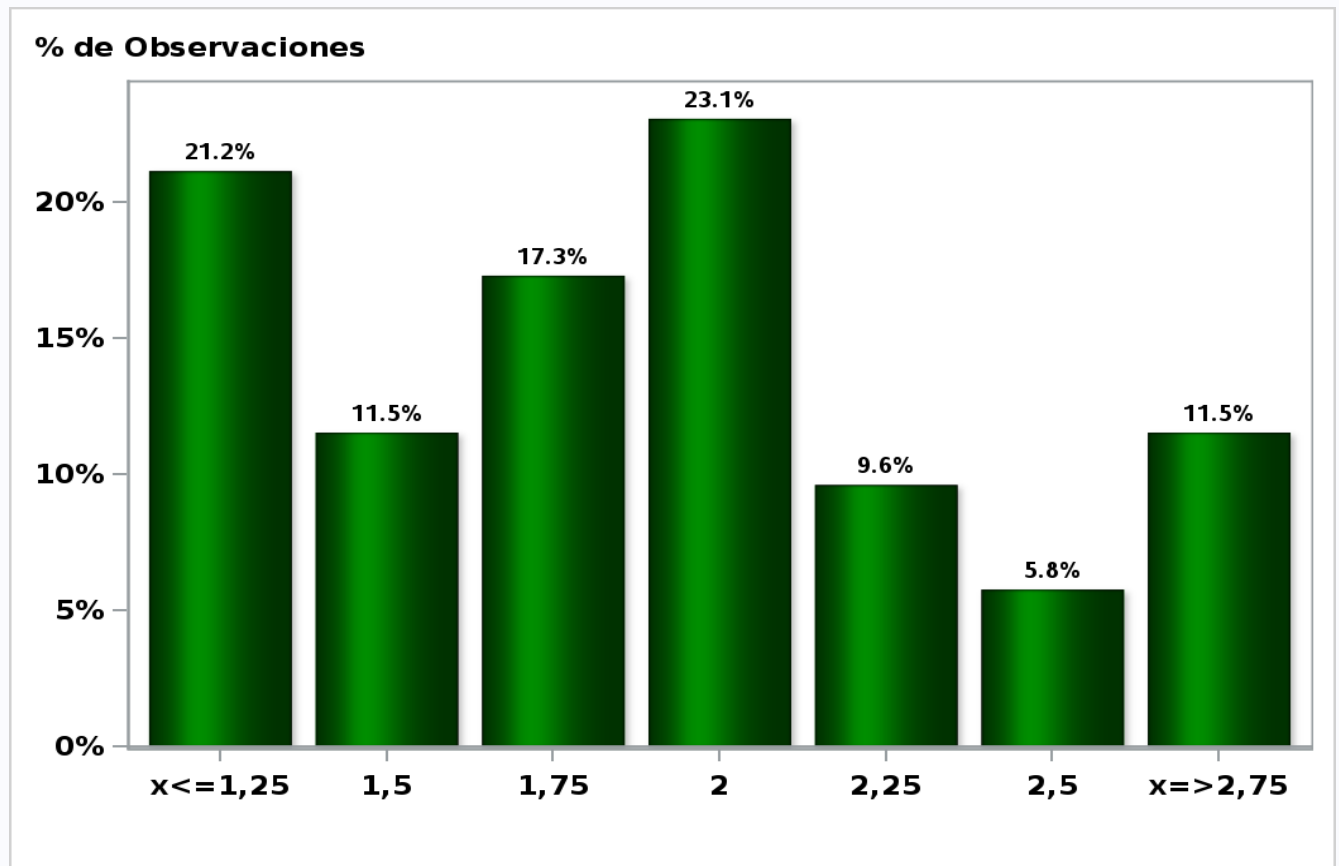
Answers: 53 Median: 1,25%



[Click to view summary table](#)

Monthly Survey On Expectations May 2021
Monetary Policy rate target in twenty three months

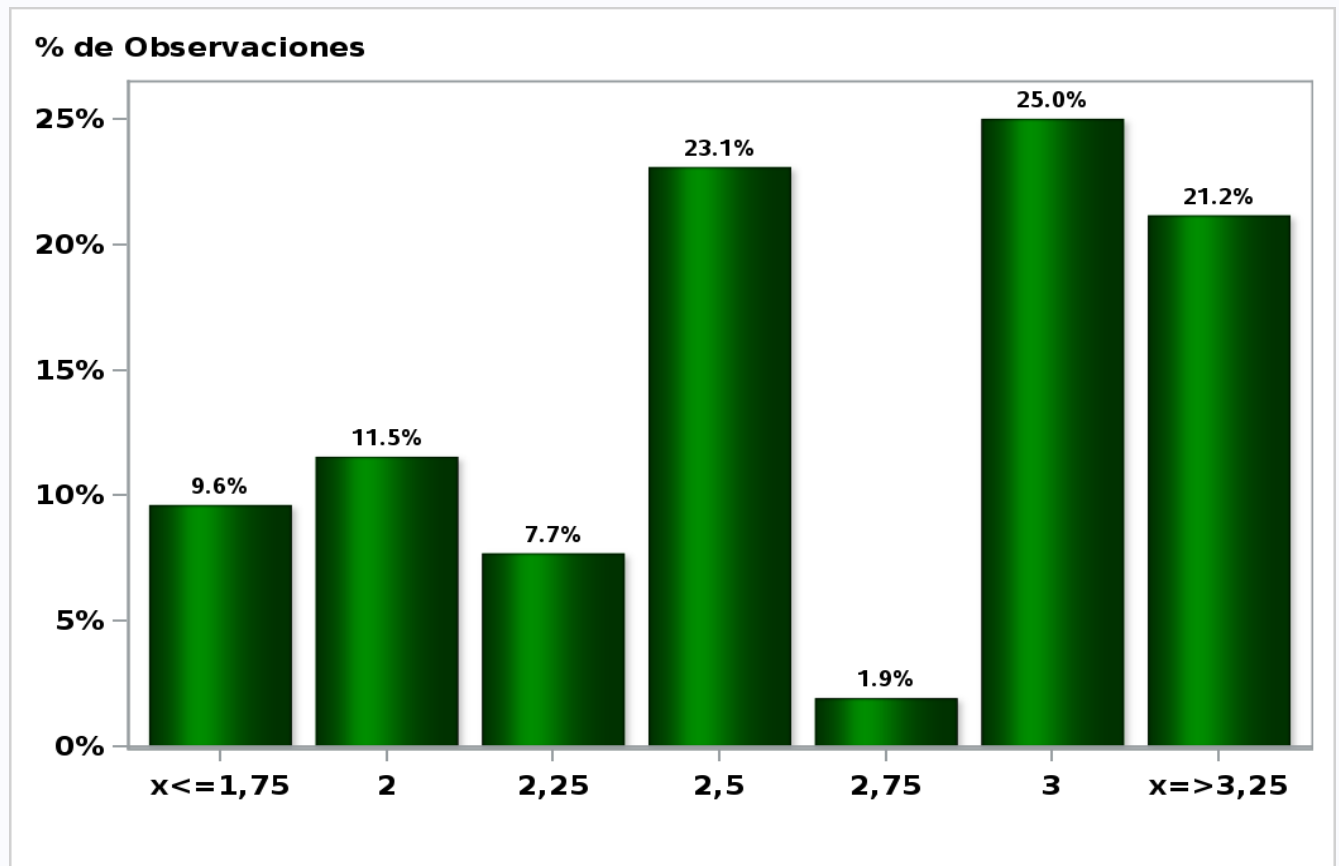
Answers: 52 Median: 2%



[Click to view summary table](#)

Monthly Survey On Expectations May 2021
Monetary Policy rate target in thirty five months

Answers: 52 Median: 2,5%

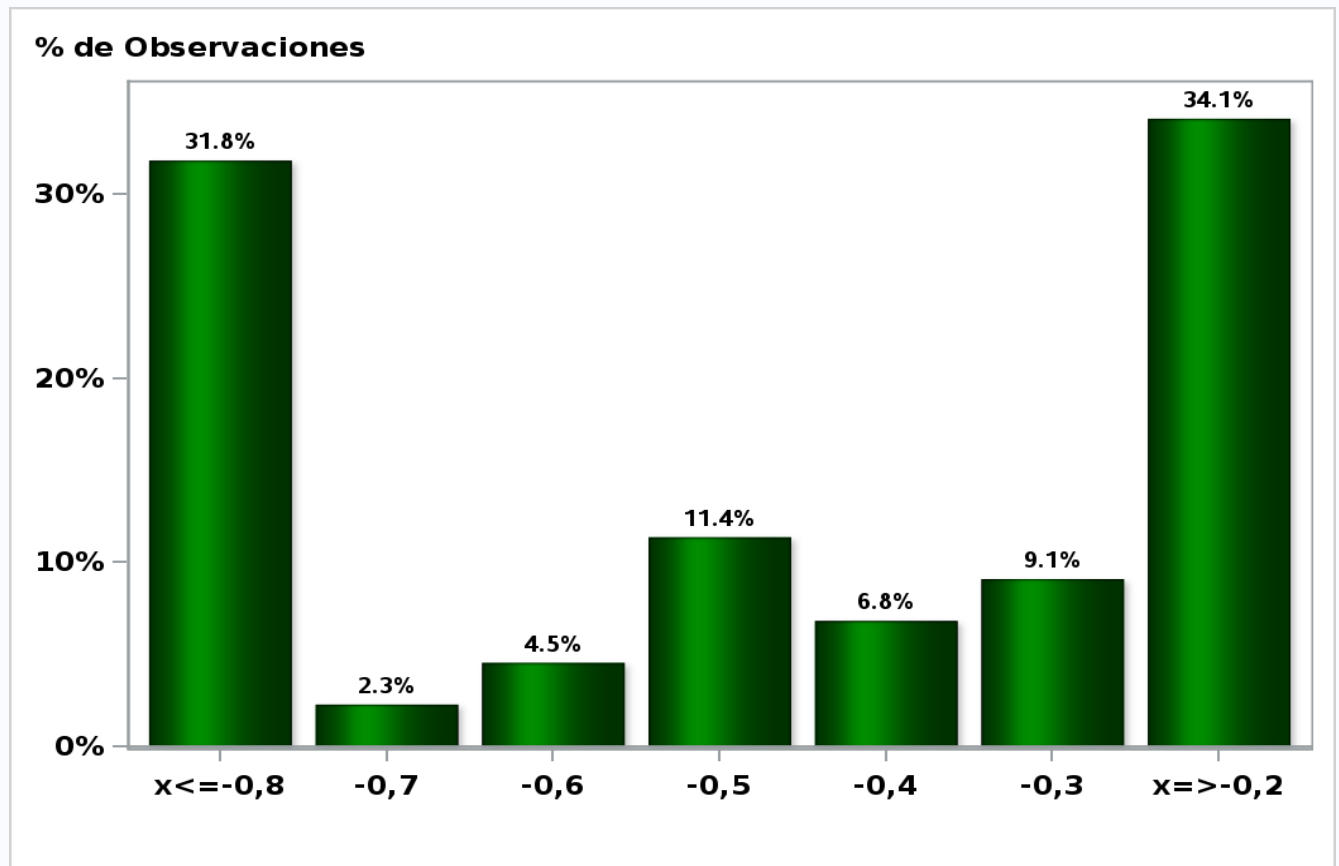


[Click to view summary table](#)

Monthly Survey On Expectations May 2021

5-Year BCU In two months

Answers: 44 Median: -0,5%

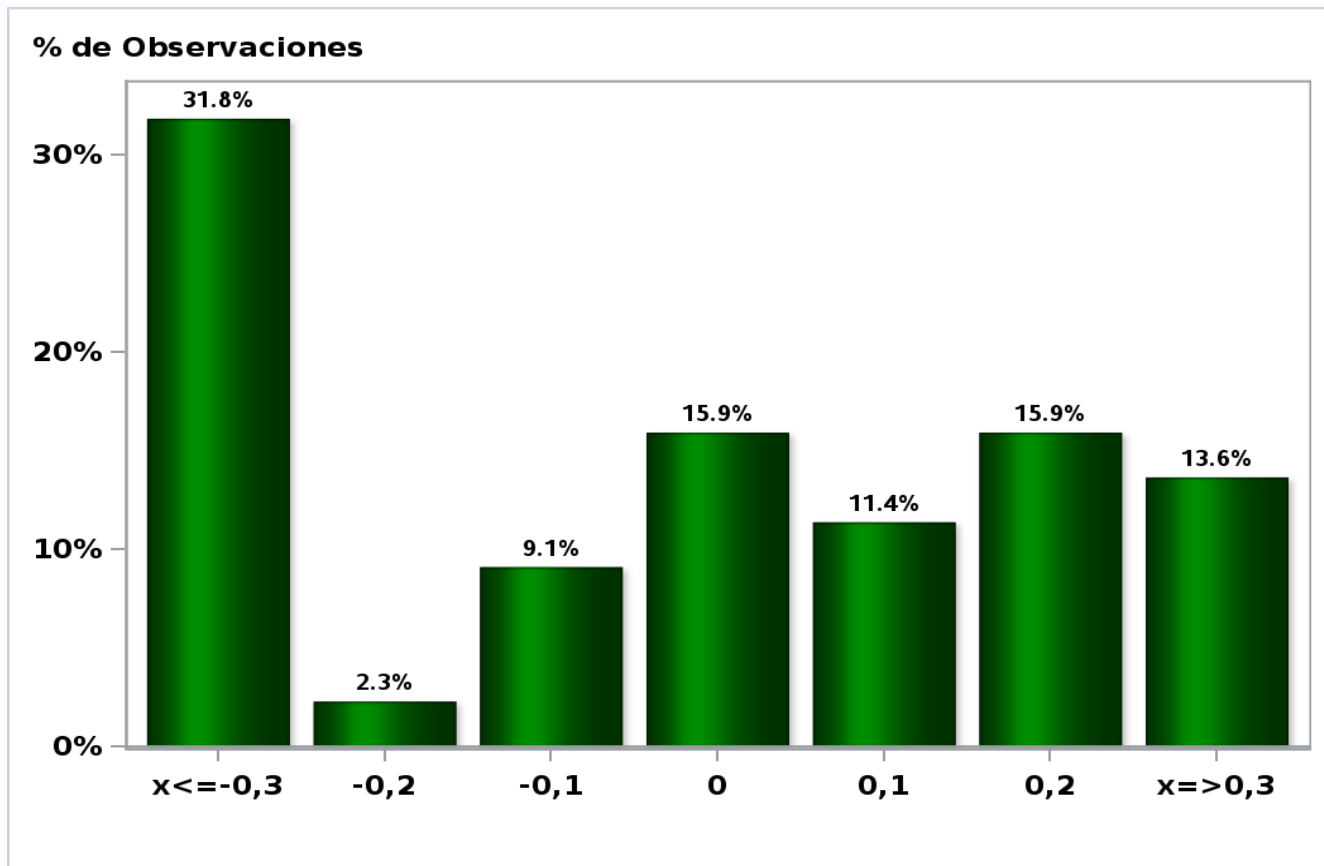


[Click to view summary table](#)

Monthly Survey On Expectations May 2021

5-Year BCU in eleven months

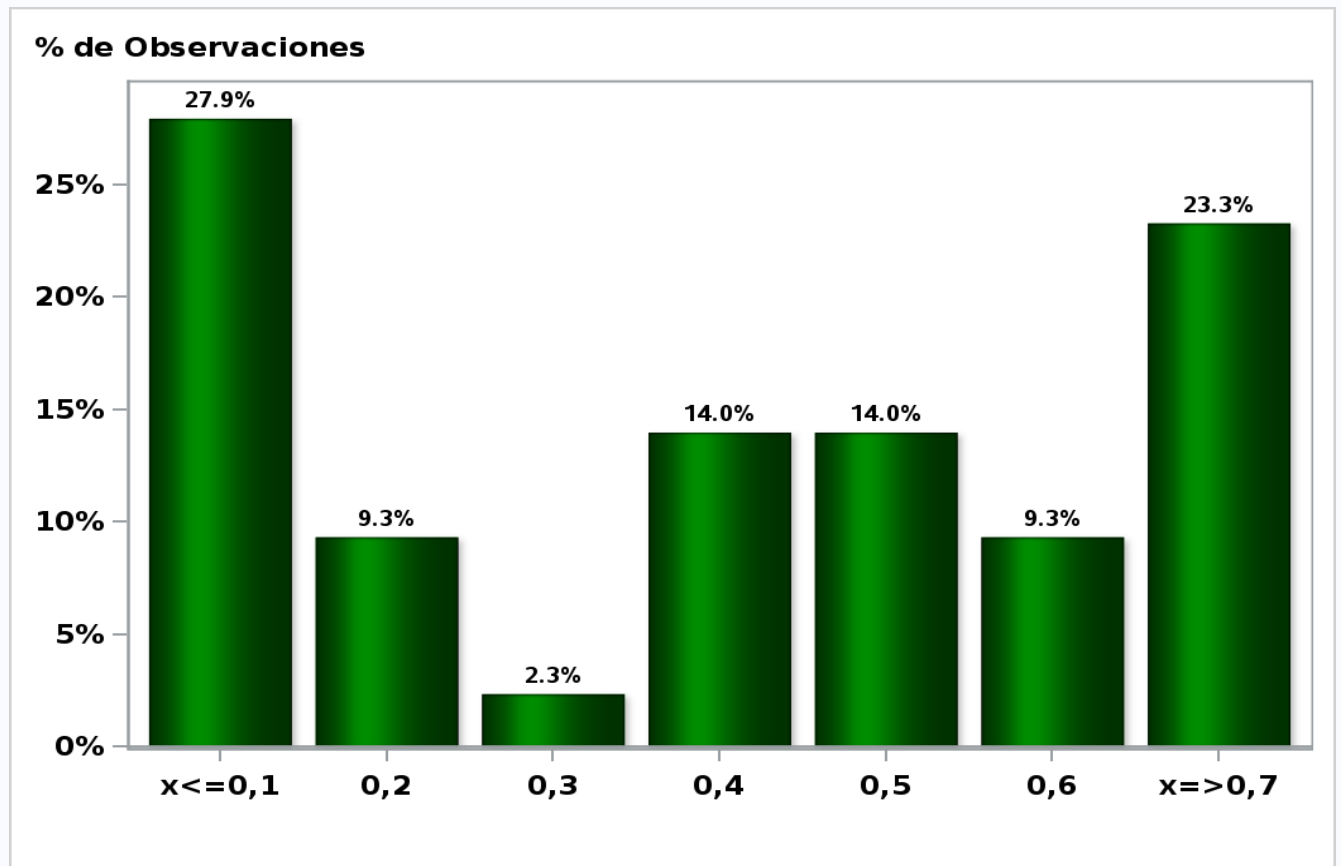
Answers: 44 Median: 0%



[Click to view summary table](#)

Monthly Survey On Expectations May 2021
5-Year BCU in twenty three months forward

Answers: 43 Median: 0,4%

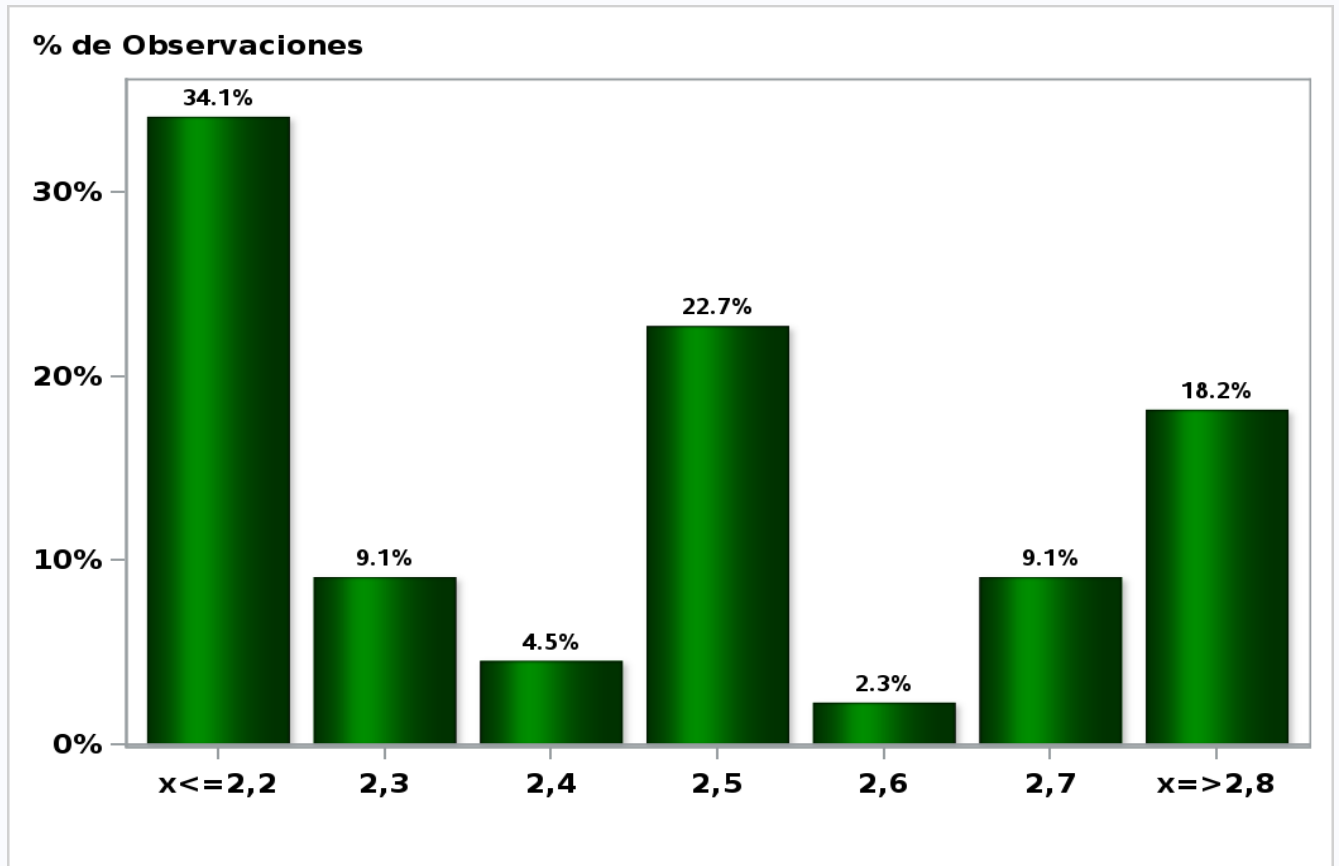


[Click to view summary table](#)

Monthly Survey On Expectations May 2021

5-Year BCP in two months

Answers: 44 Median: 2,5%

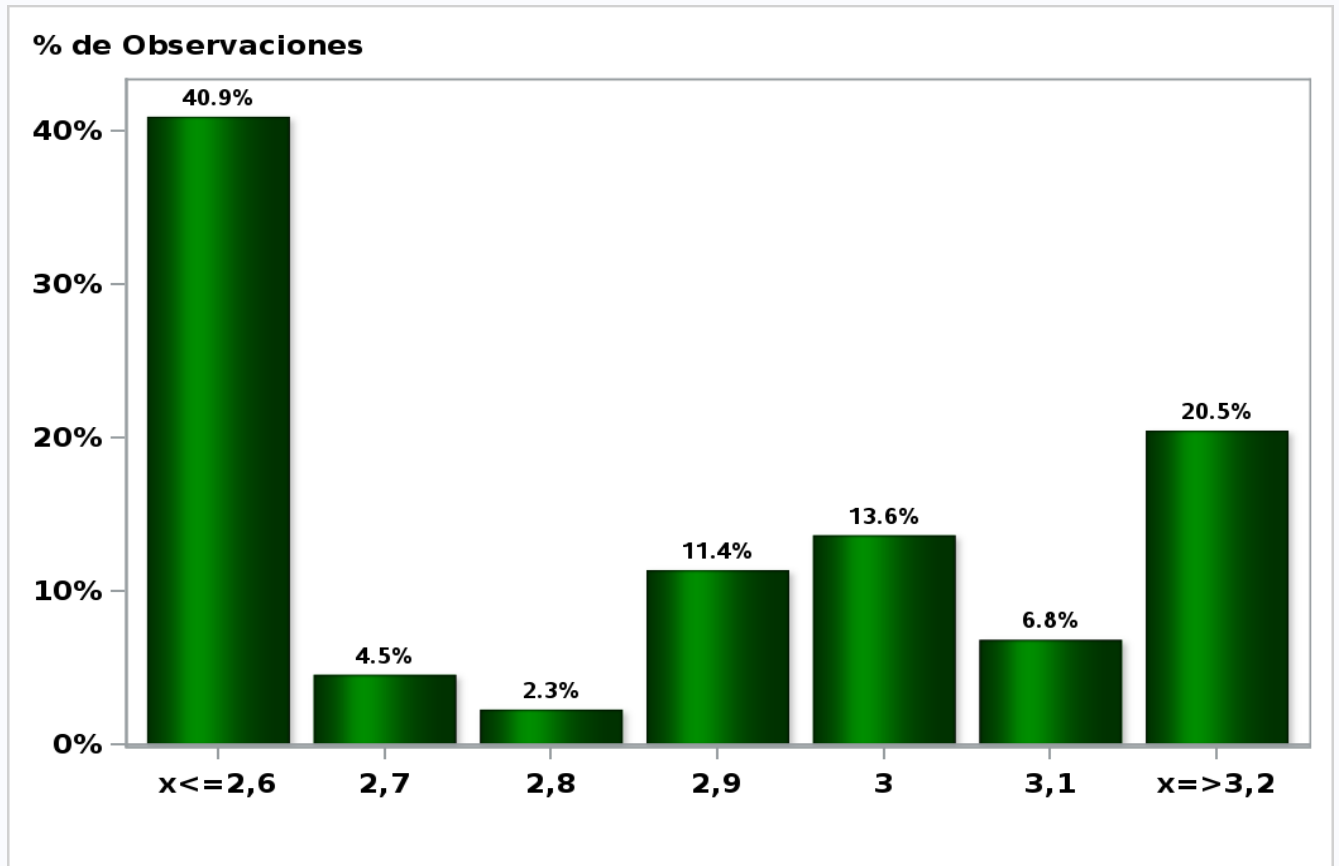


[Click to view summary table](#)

Monthly Survey On Expectations May 2021

5-Year BCP in eleven months

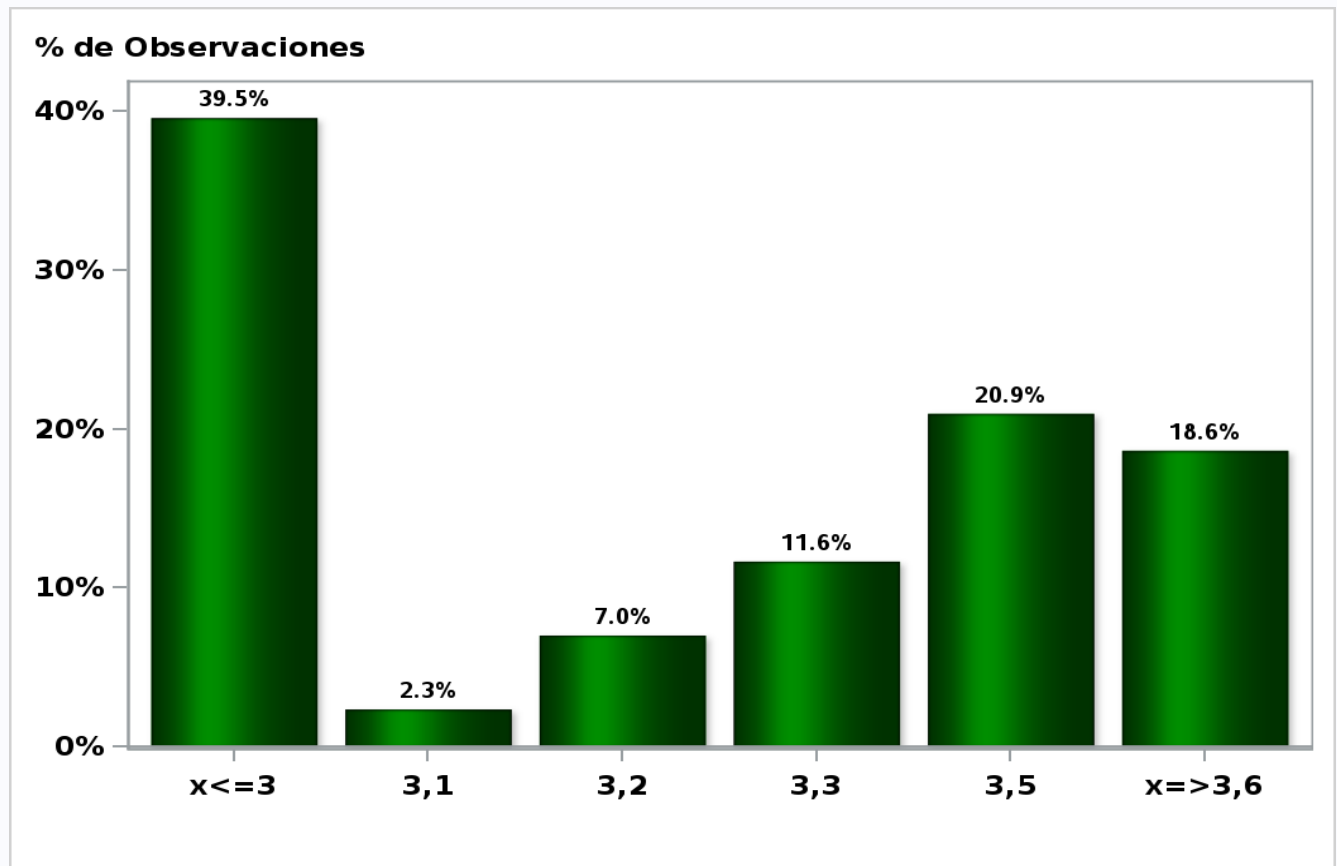
Answers: 44 Median: 2,9%



[Click to view summary table](#)

Monthly Survey On Expectations May 2021
5-Year BCP in twenty three months forward

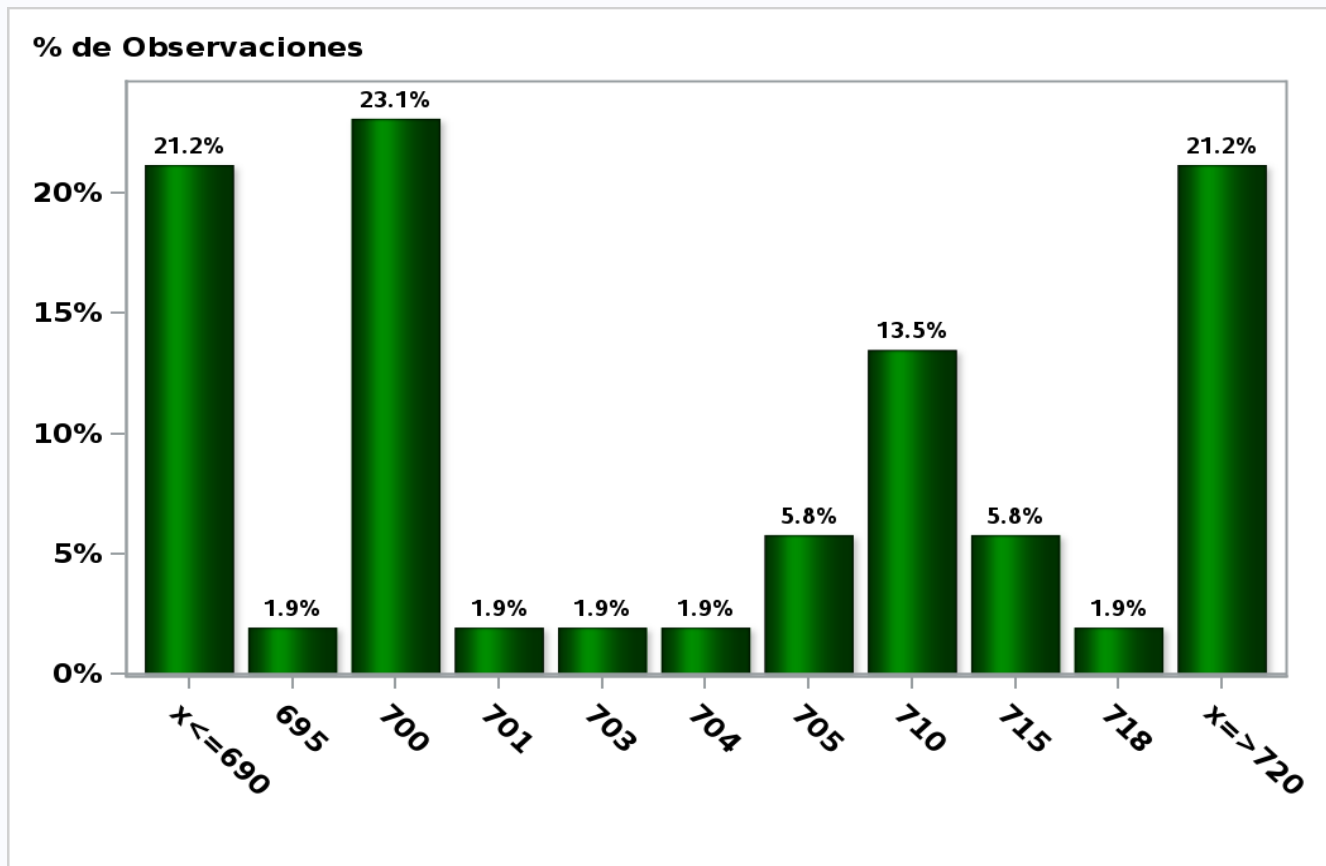
Answers: 43 Median: 3,3%



[Click to view summary table](#)

Monthly Survey On Expectations May 2021
Exchange Rate in two months (CH \$ per US\$)

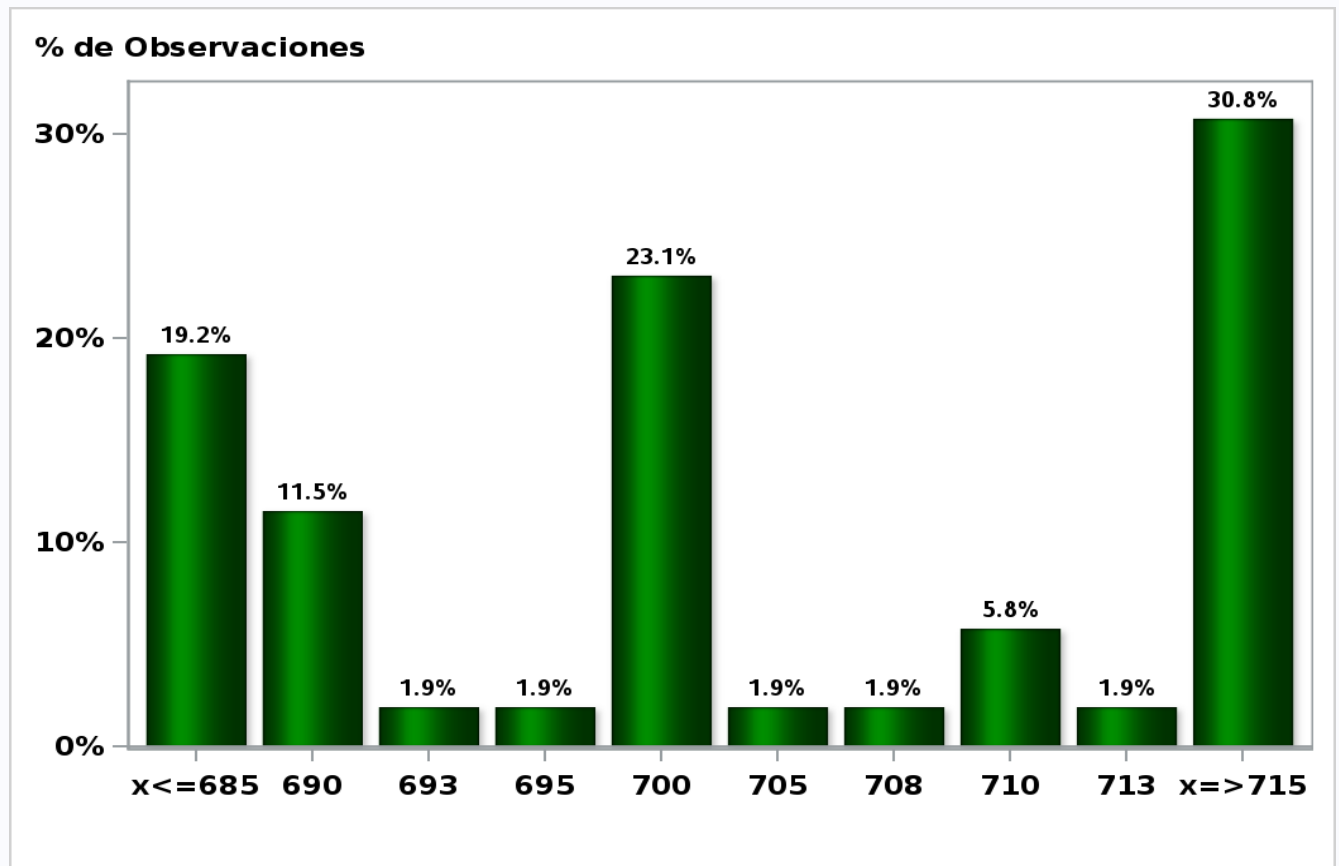
Answers: 52 Median: \$703,5



[Click to view summary table](#)

Monthly Survey On Expectations May 2021
Exchange Rate in eleven months (CH \$ per US\$)

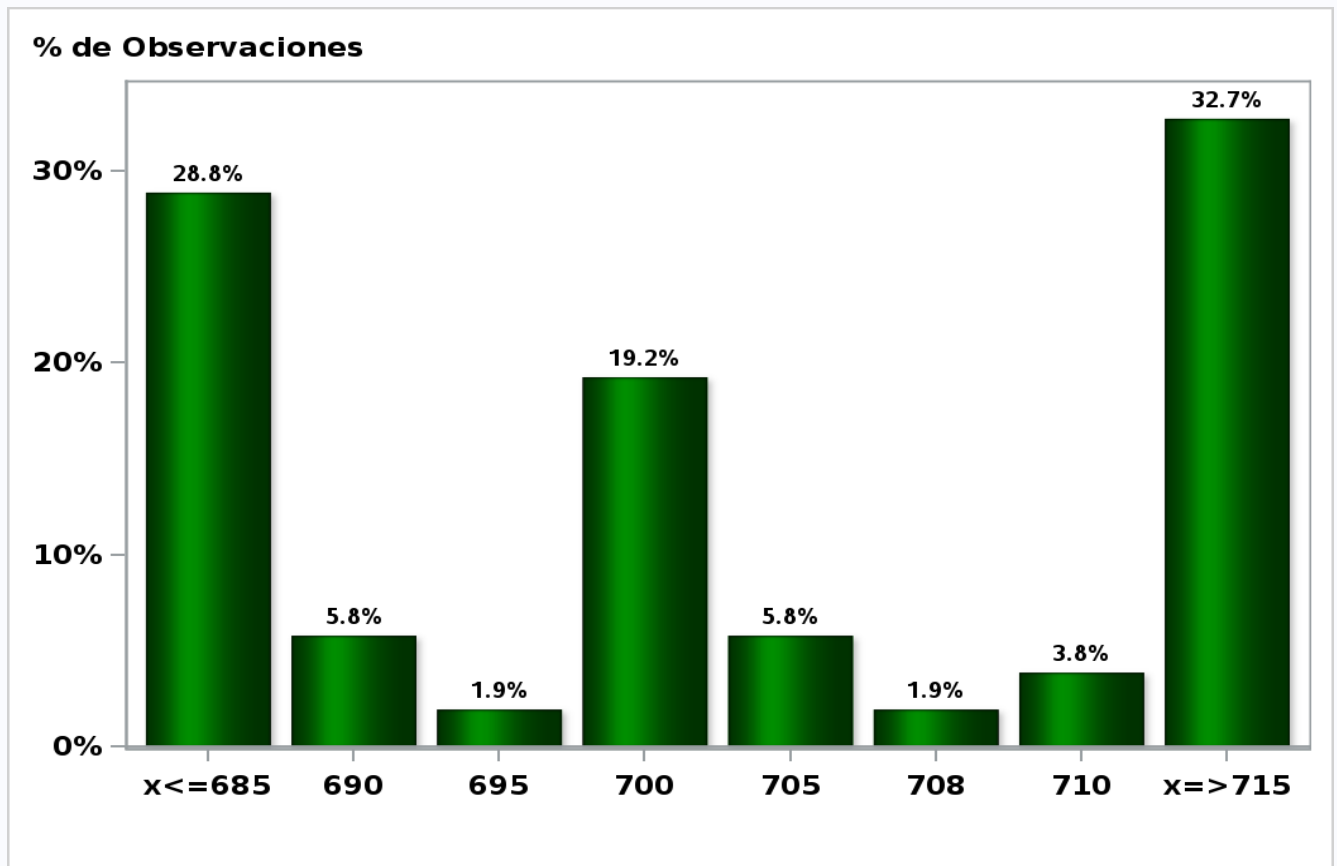
Answers: 52 Median: \$700



[Click to view summary table](#)

Monthly Survey On Expectations May 2021
Exchange Rate in twenty three months forward (CH \$ per US\$)

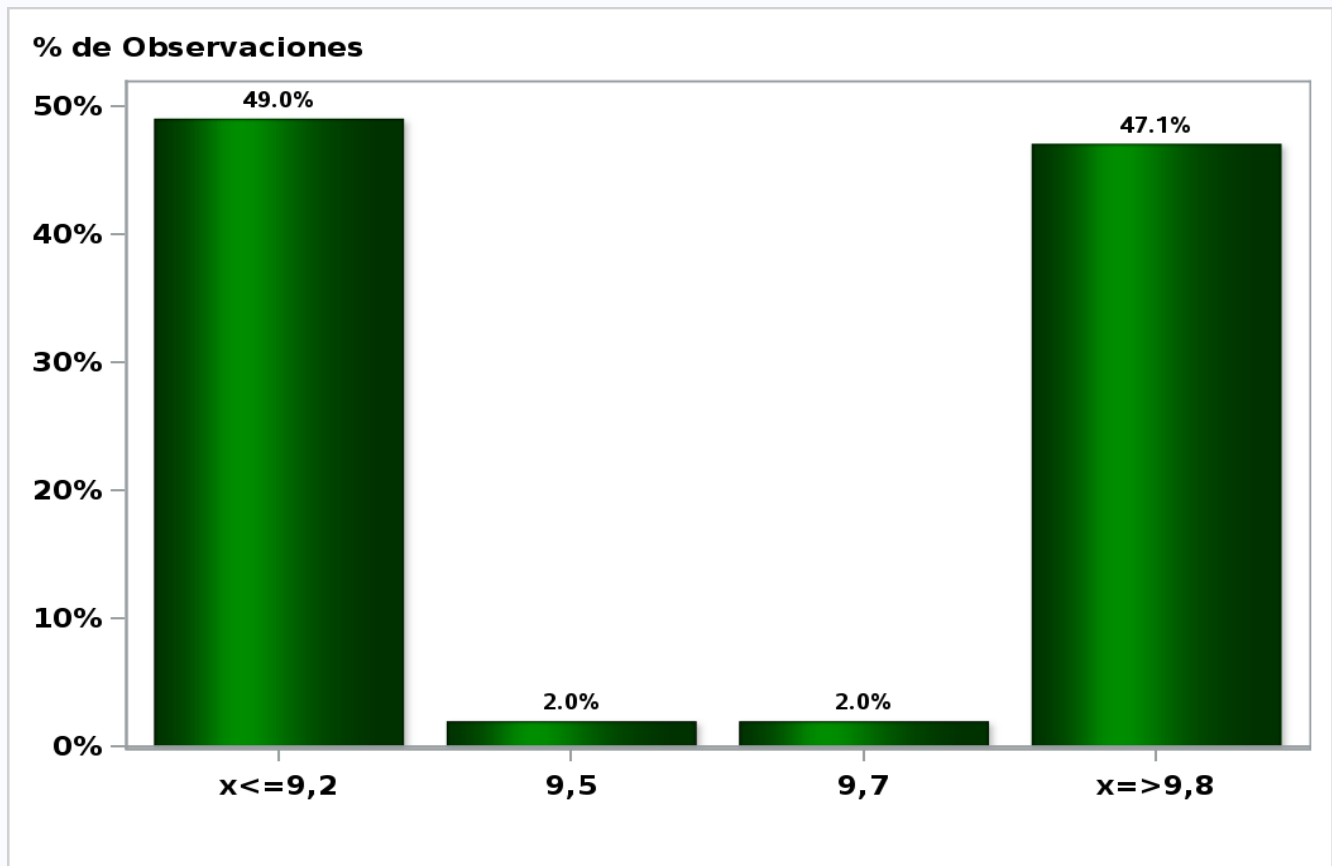
Answers: 52 Median: \$700



[Click to view summary table](#)

Monthly Survey On Expectations May 2021
IMACEC (Monthly Activity Index) one month ago

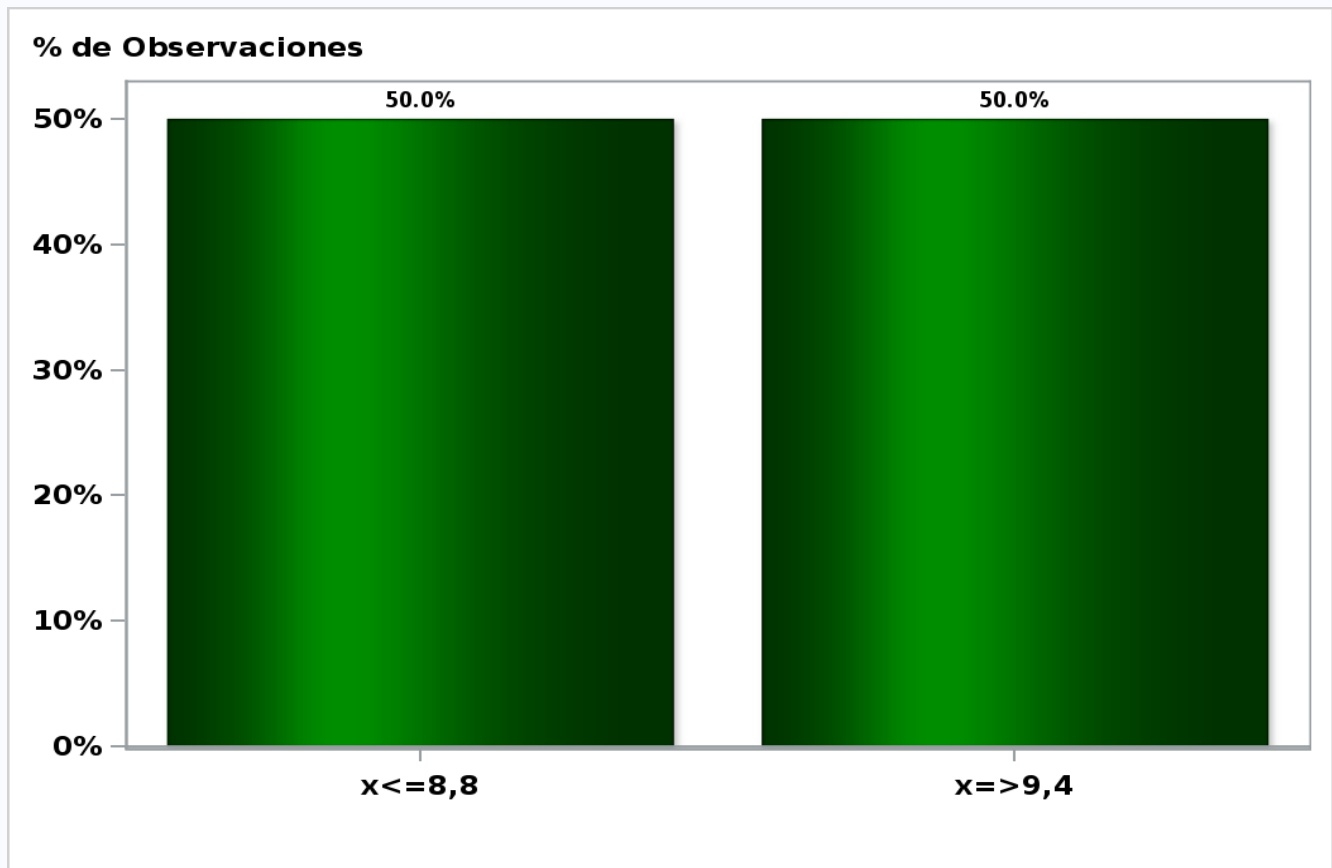
Answers: 51 Median: 9,5%



[Click to view summary table](#)

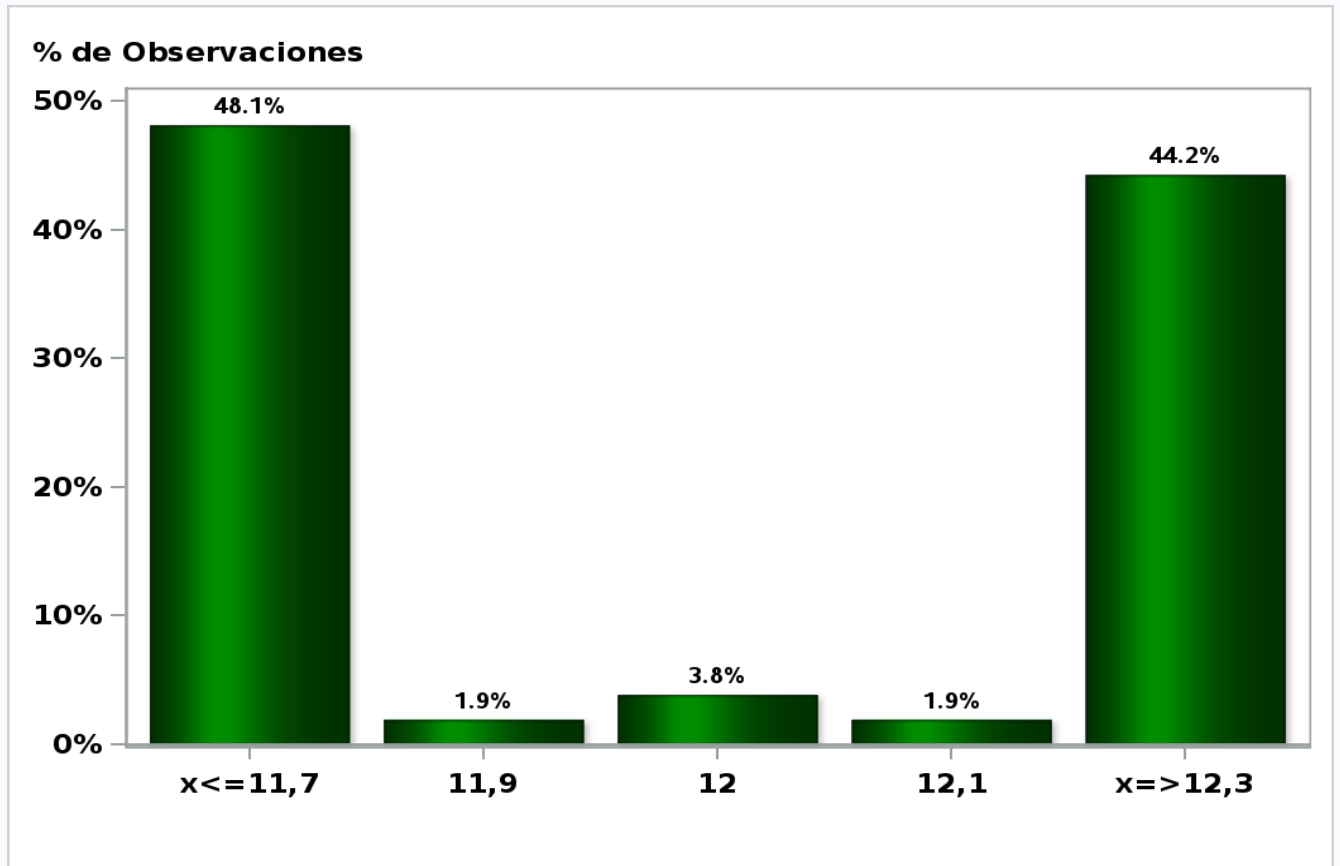
Monthly Survey On Expectations May 2021
IMACEC No Mining (Monthly Activity Index) one month ago

Answers: 42 Median: 9,1%



[Click to view summary table](#)

Monthly Survey On Expectations May 2021
GDP within calendar quarter of the survey
Answers: 52 Median: 12%

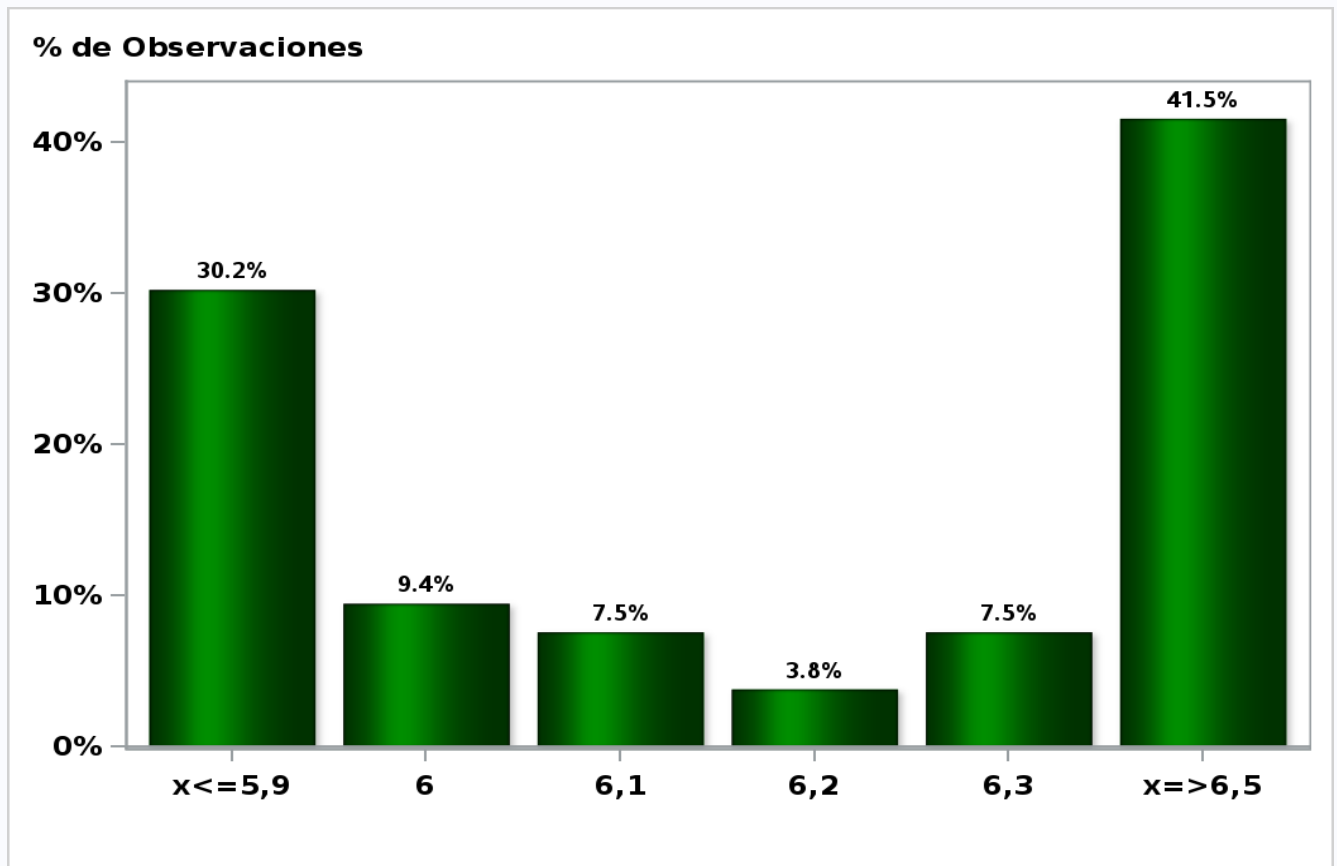


[Click to view summary table](#)

Monthly Survey On Expectations May 2021

GDP year 2021 (12-month change)

Answers: 53 Median: 6,2%

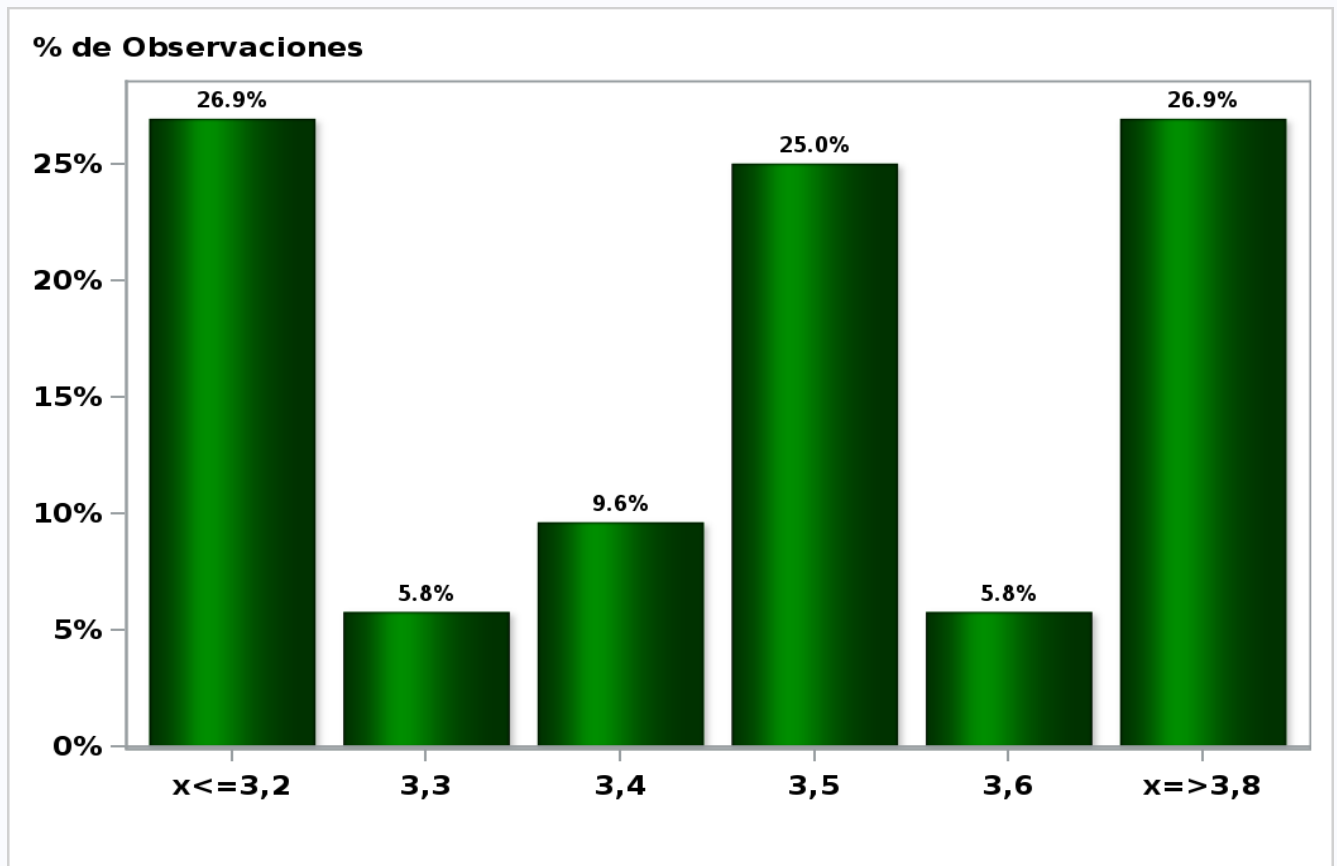


[Click to view summary table](#)

Monthly Survey On Expectations May 2021

GDP year 2022 (12-month change)

Answers: 52 Median: 3,5%

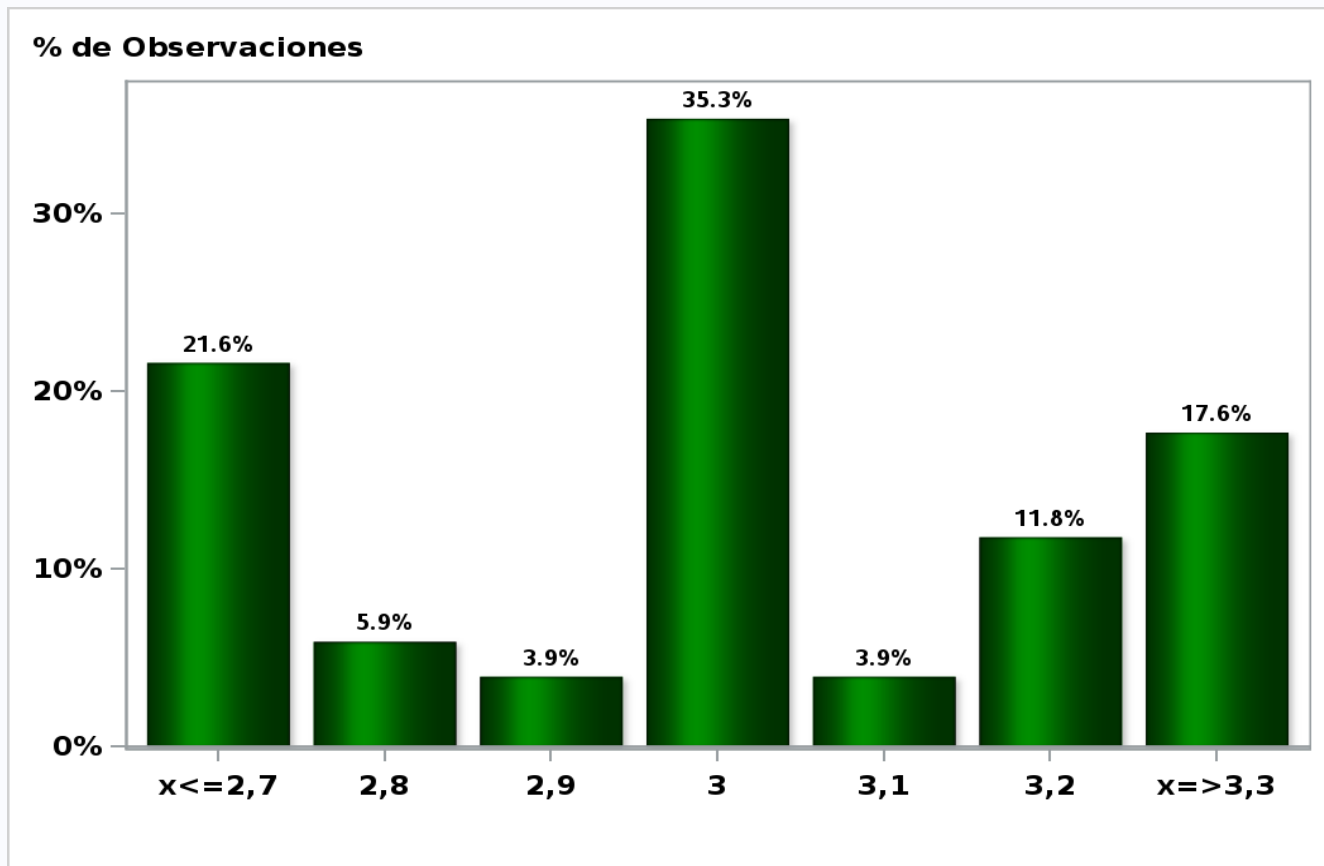


[Click to view summary table](#)

Monthly Survey On Expectations May 2021

GDP year 2023 (12-month change)

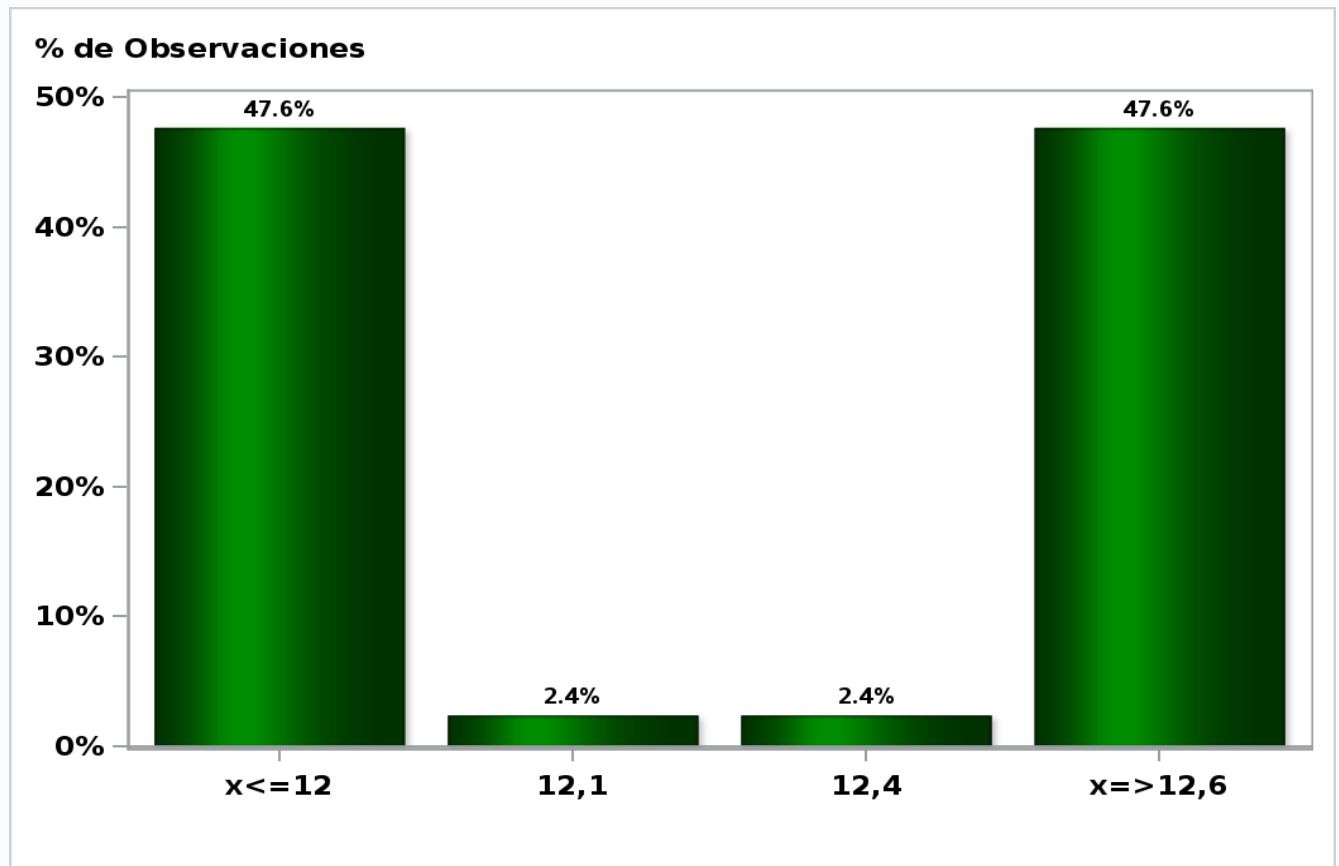
Answers: 51 Median: 3%



[Click to view summary table](#)

Monthly Survey On Expectations May 2021
GDP No Mining within calendar quarter of the survey

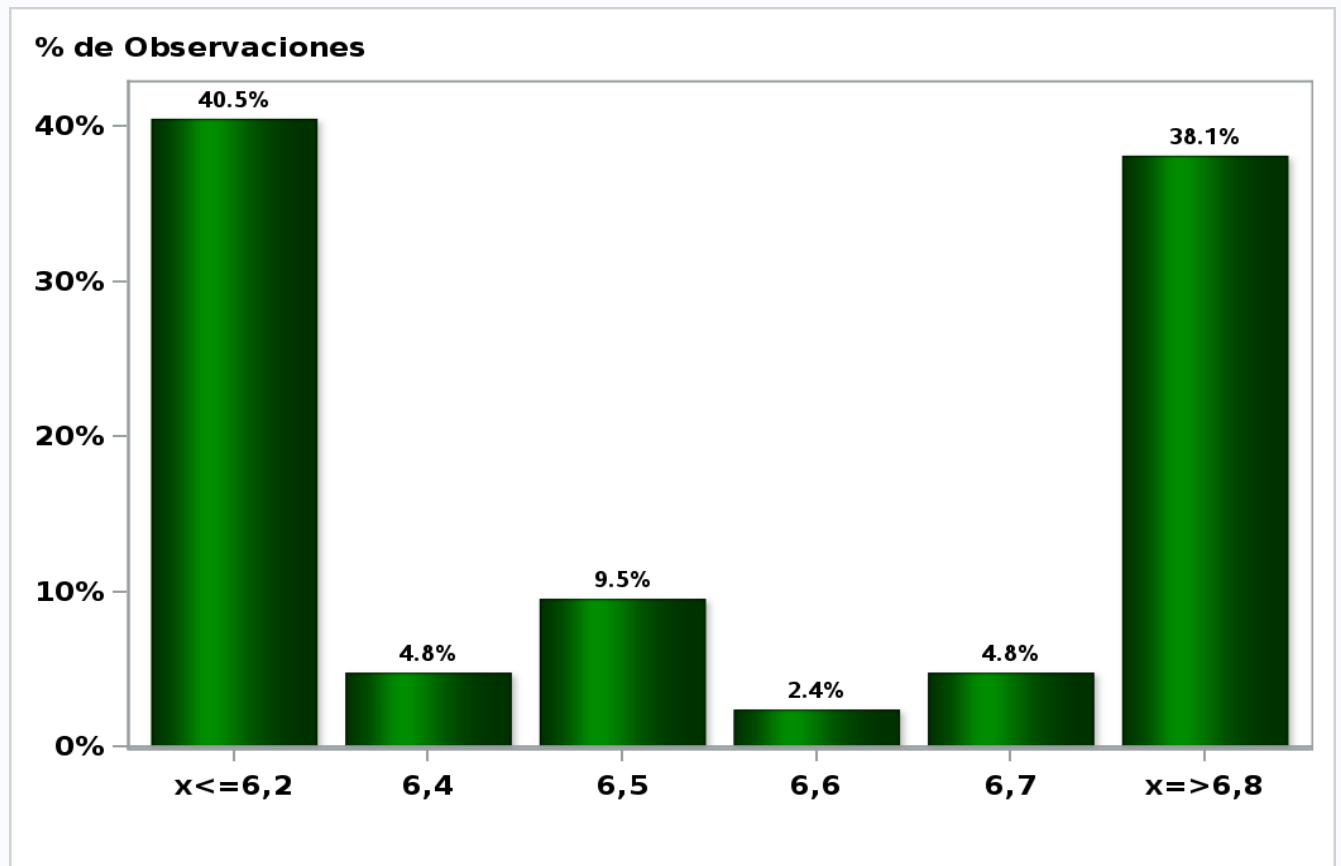
Answers: 42 Median: 12,3%



[Click to view summary table](#)

Monthly Survey On Expectations May 2021
GDP No Mining year 2021 (12-month change)

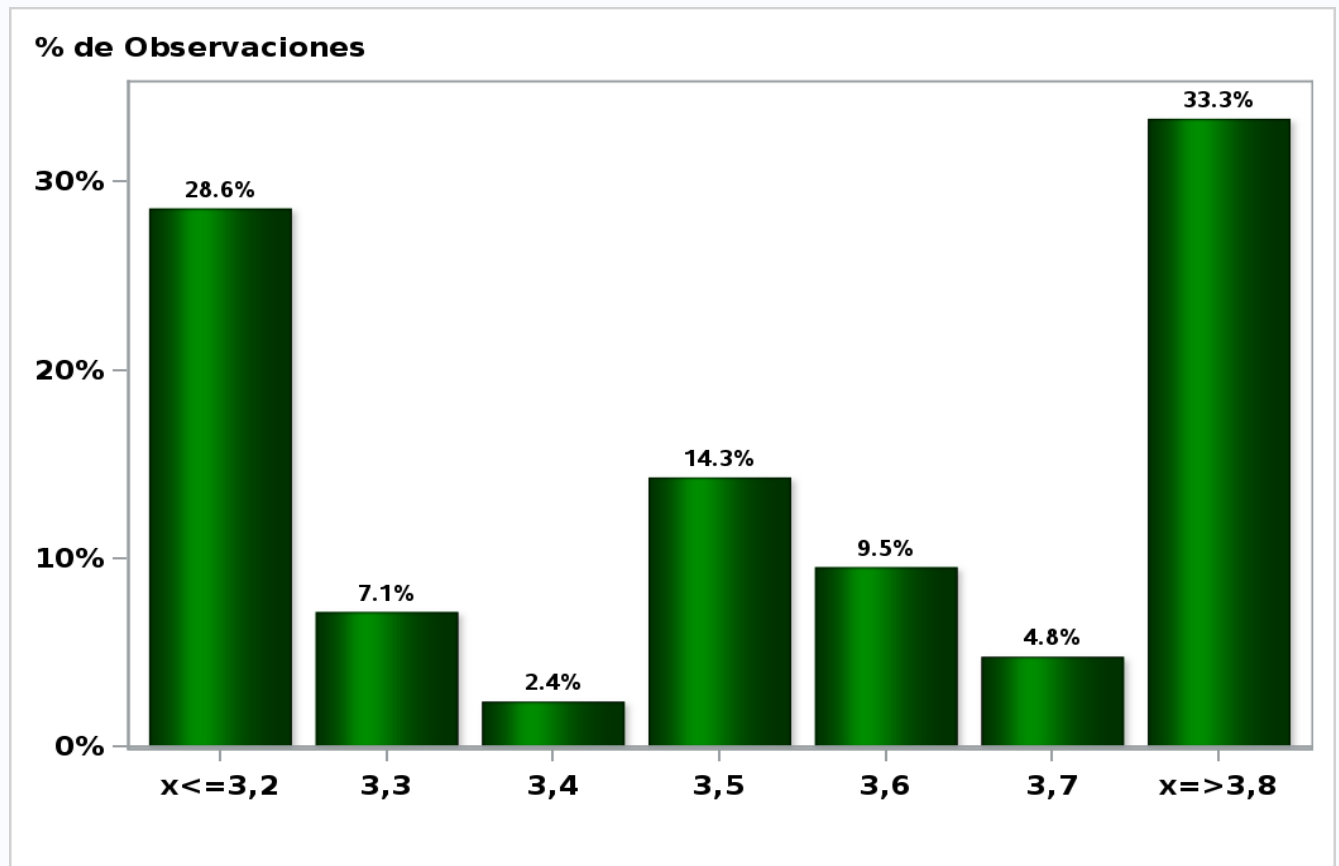
Answers: 42 Median: 6,5%



[Click to view summary table](#)

Monthly Survey On Expectations May 2021
GDP No Mining year 2022 (12-month change)

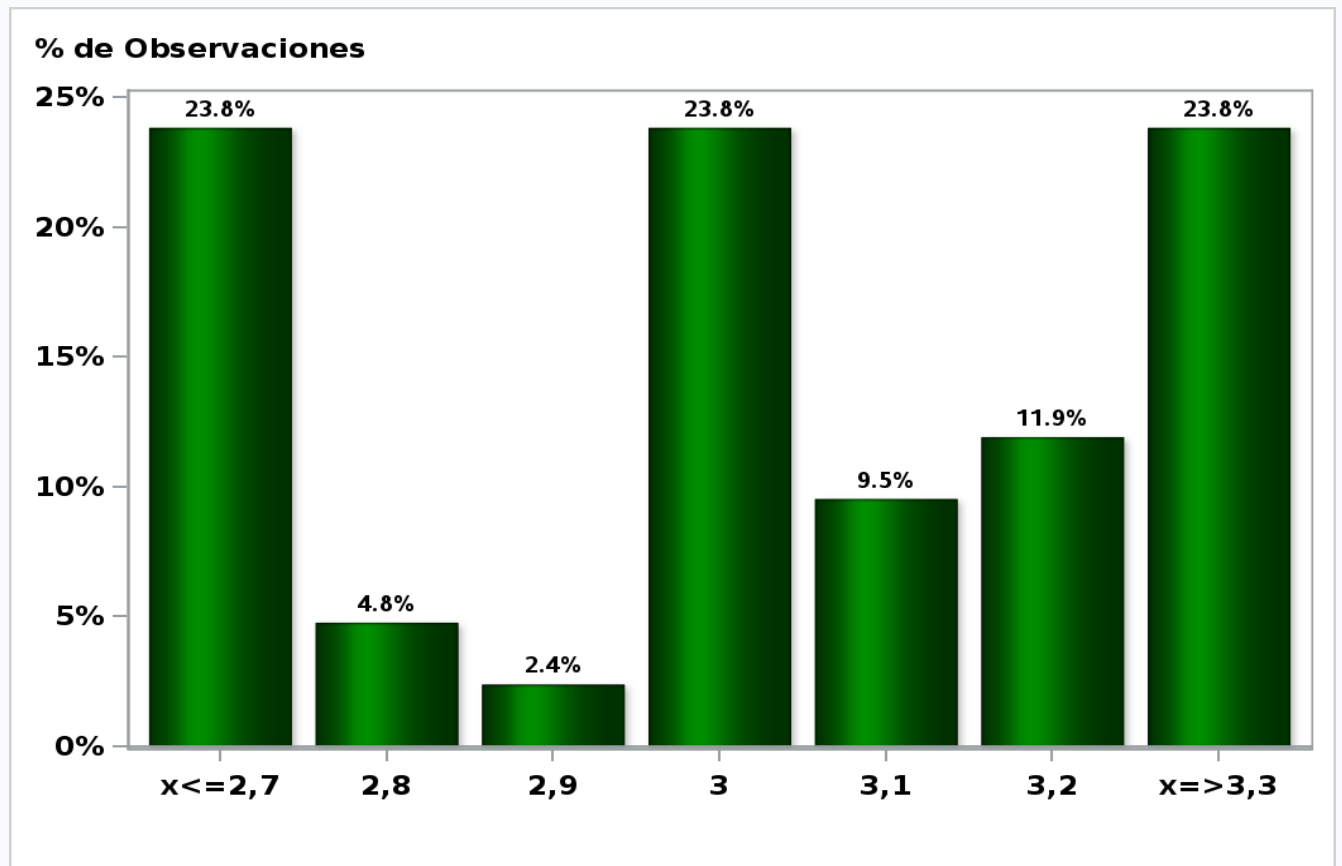
Answers: 42 Median: 3,5%



[Click to view summary table](#)

Monthly Survey On Expectations May 2021
GDP No Mining year 2023 (12-month change)

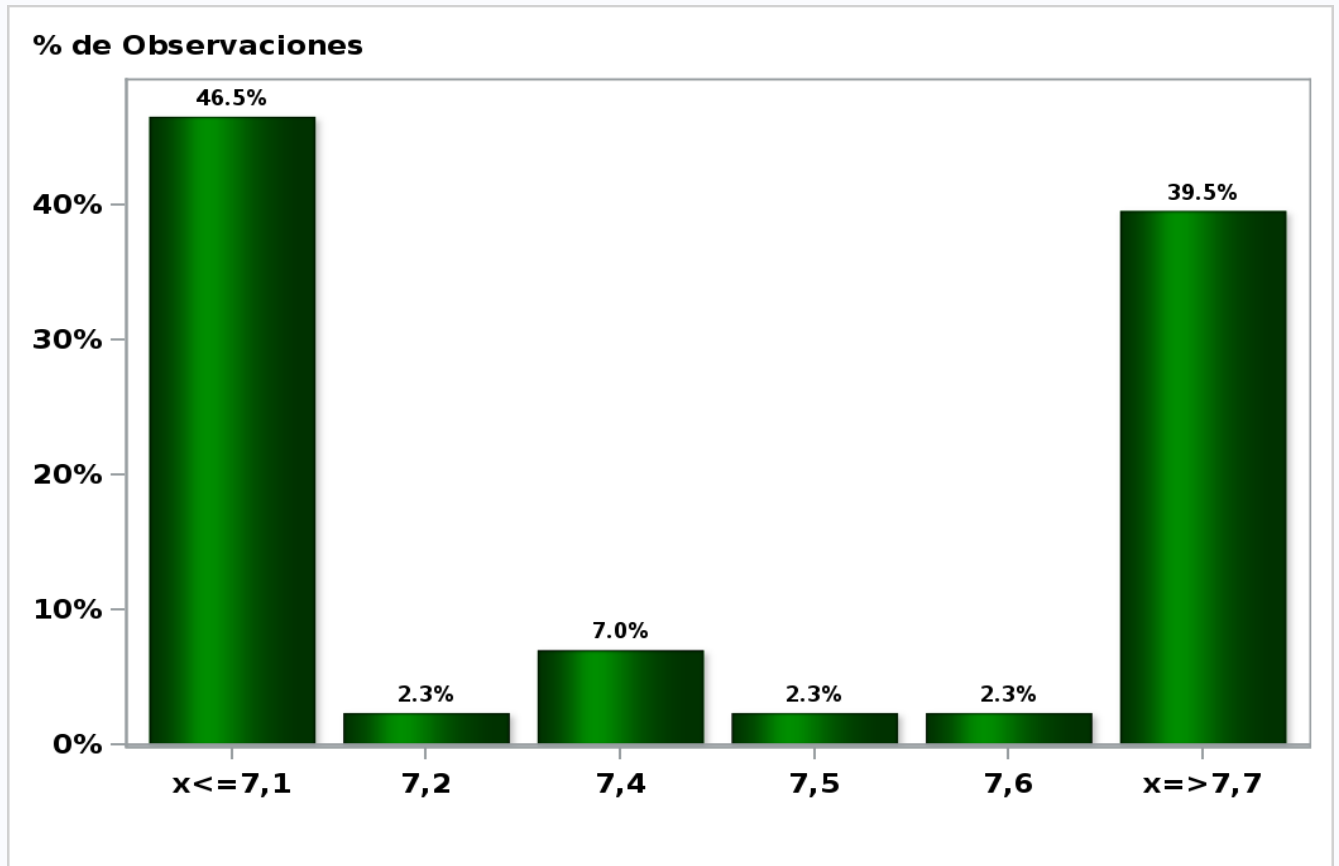
Answers: 42 Median: 3%



[Click to view summary table](#)

Monthly Survey On Expectations May 2021
HFC including NPO year 2021 (12-month change)

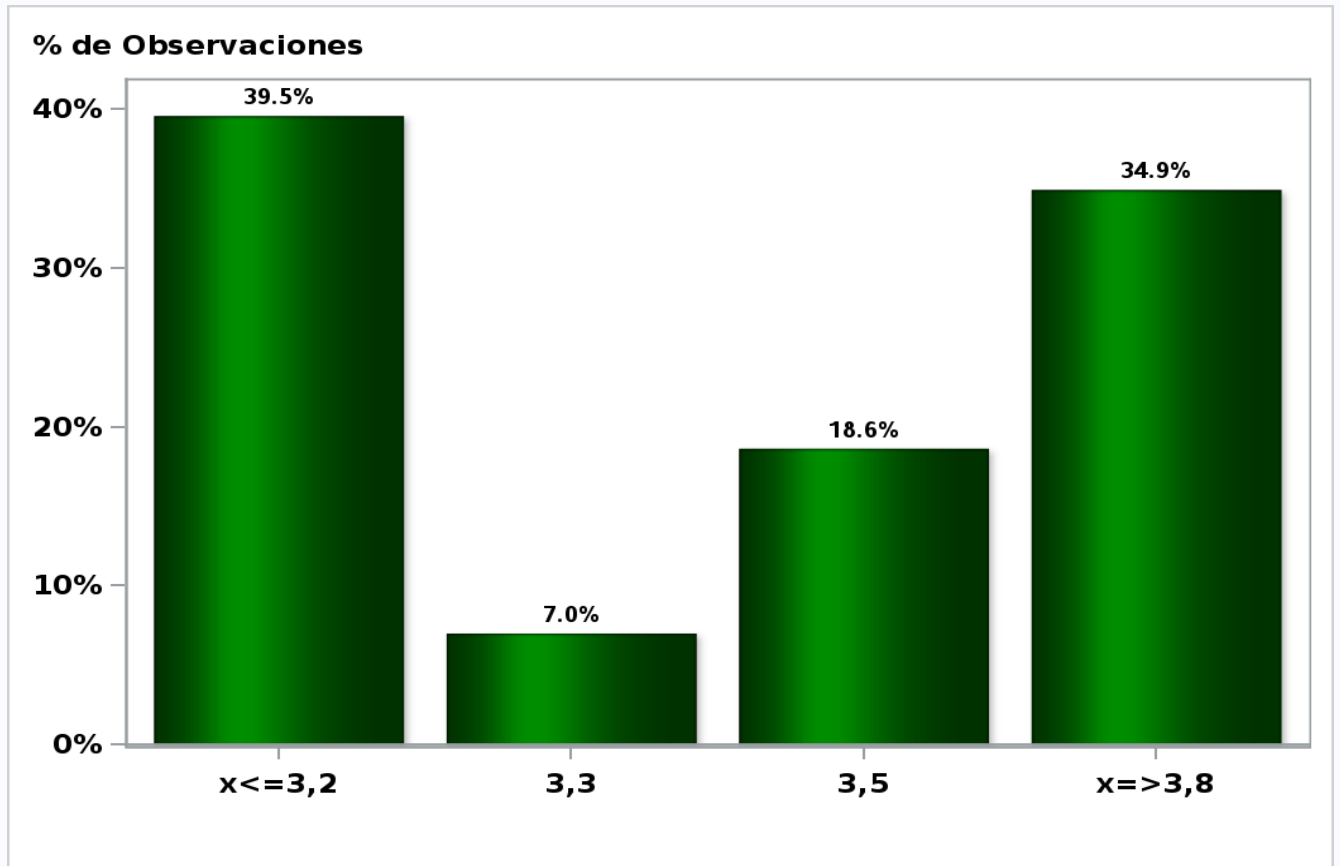
Answers: 43 Median: 7,4%



[Click to view summary table](#)

Monthly Survey On Expectations May 2021
HFC including NPO year 2022 (12-month change)

Answers: 43 Median: 3,5%

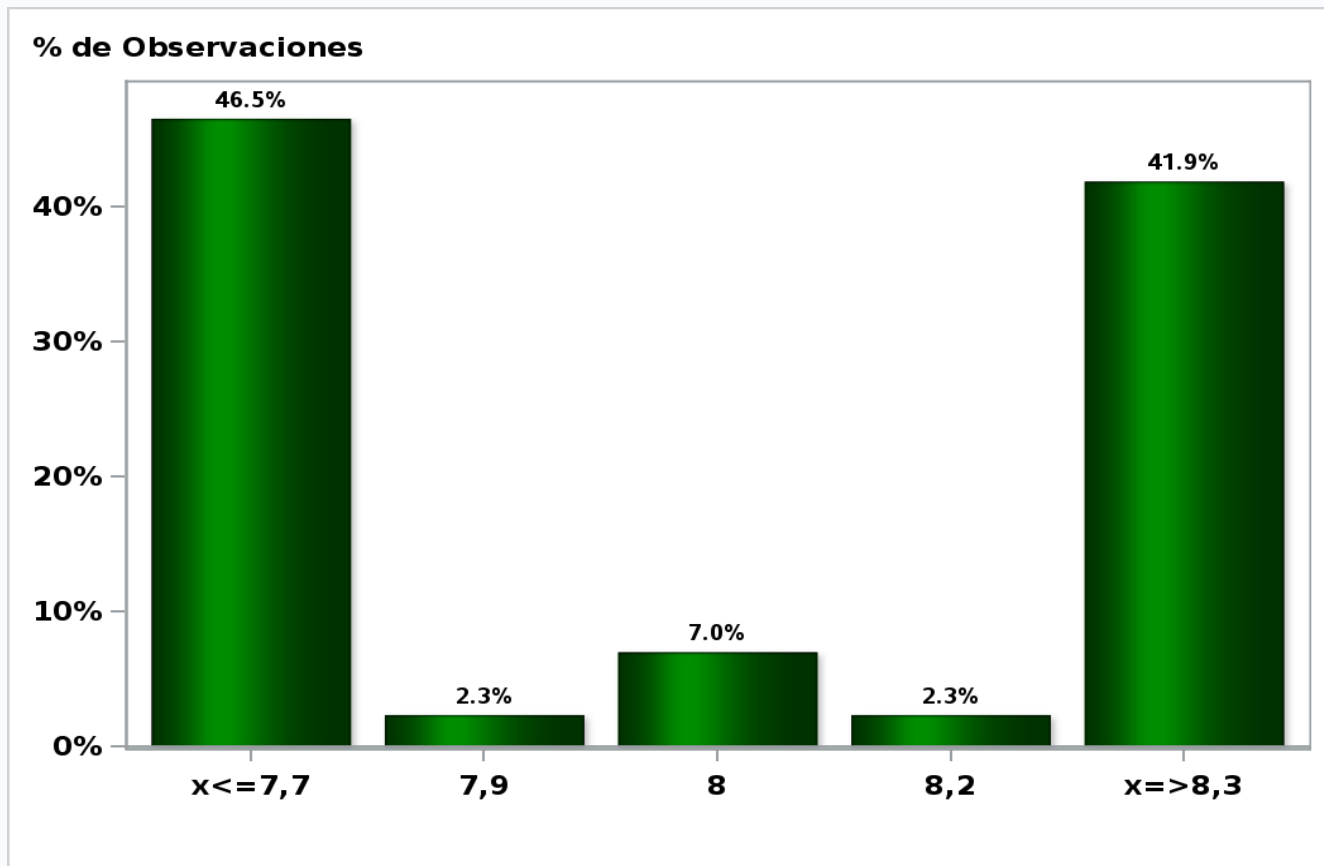


[Click to view summary table](#)

Monthly Survey On Expectations May 2021

GFCF year 2021 (12-month change)

Answers: 43 Median: 8%

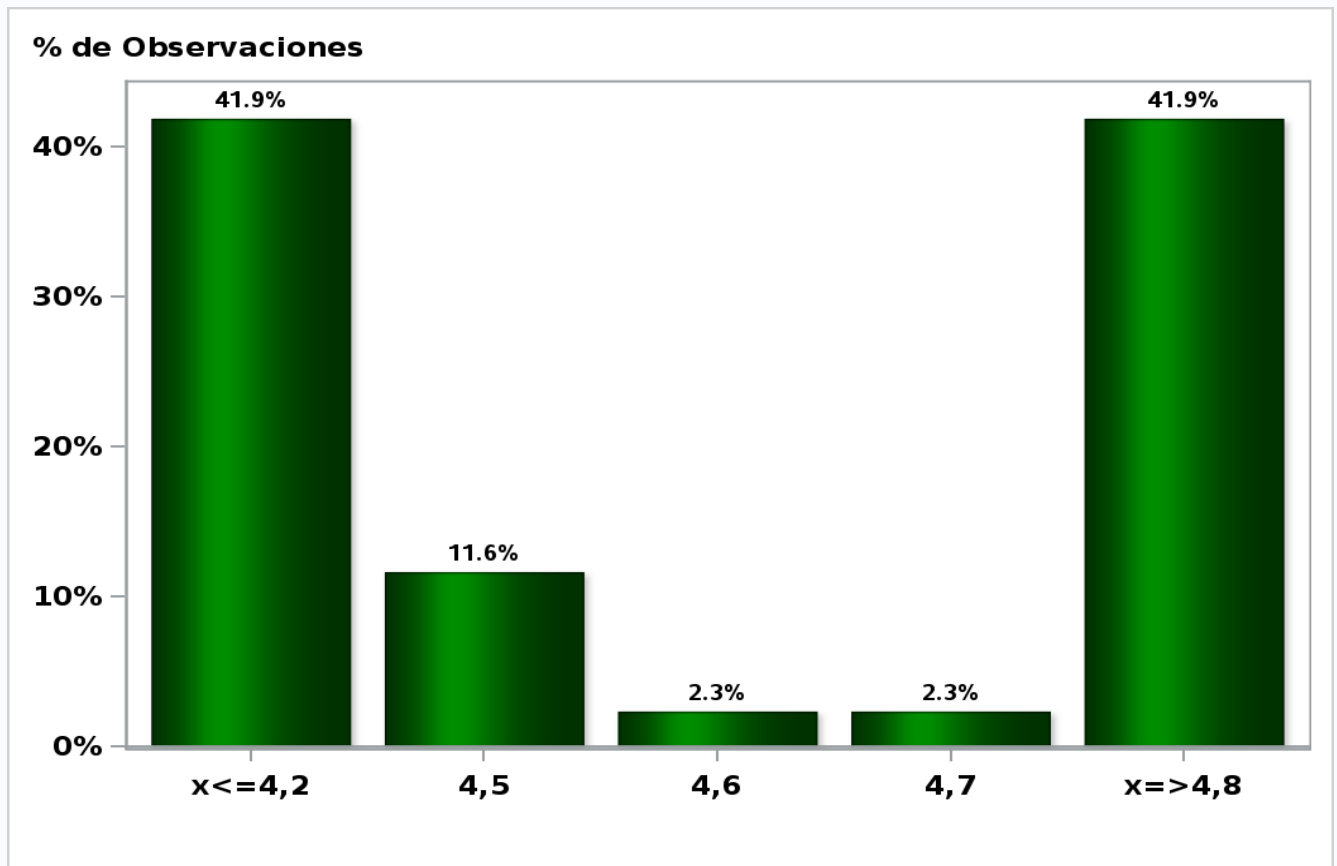


[Click to view summary table](#)

Monthly Survey On Expectations May 2021

GFCF year 2022 (12-month change)

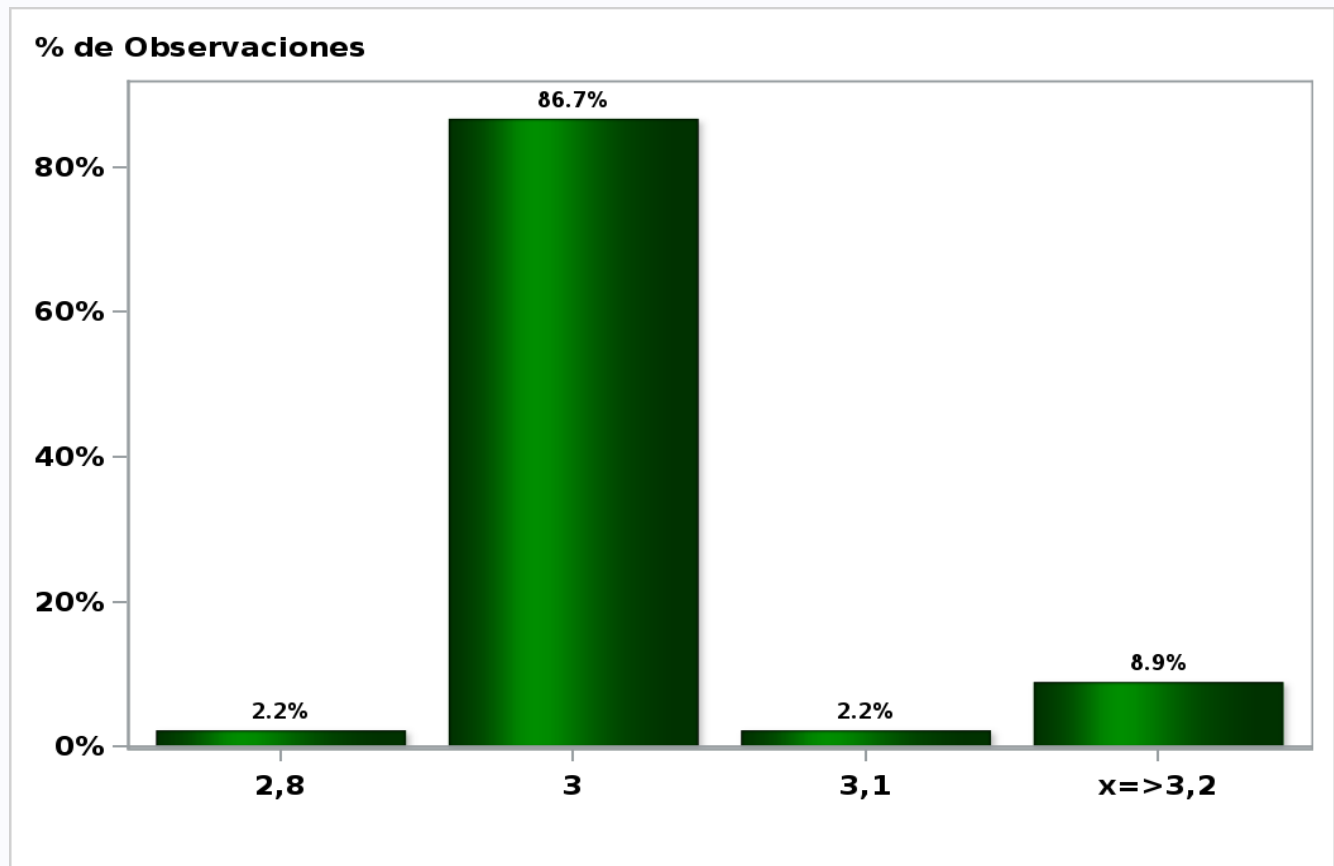
Answers: 43 Median: 4,5%



[Click to view summary table](#)

Monthly Survey On Expectations May 2021
Long-term Average Inflation (12-month change)

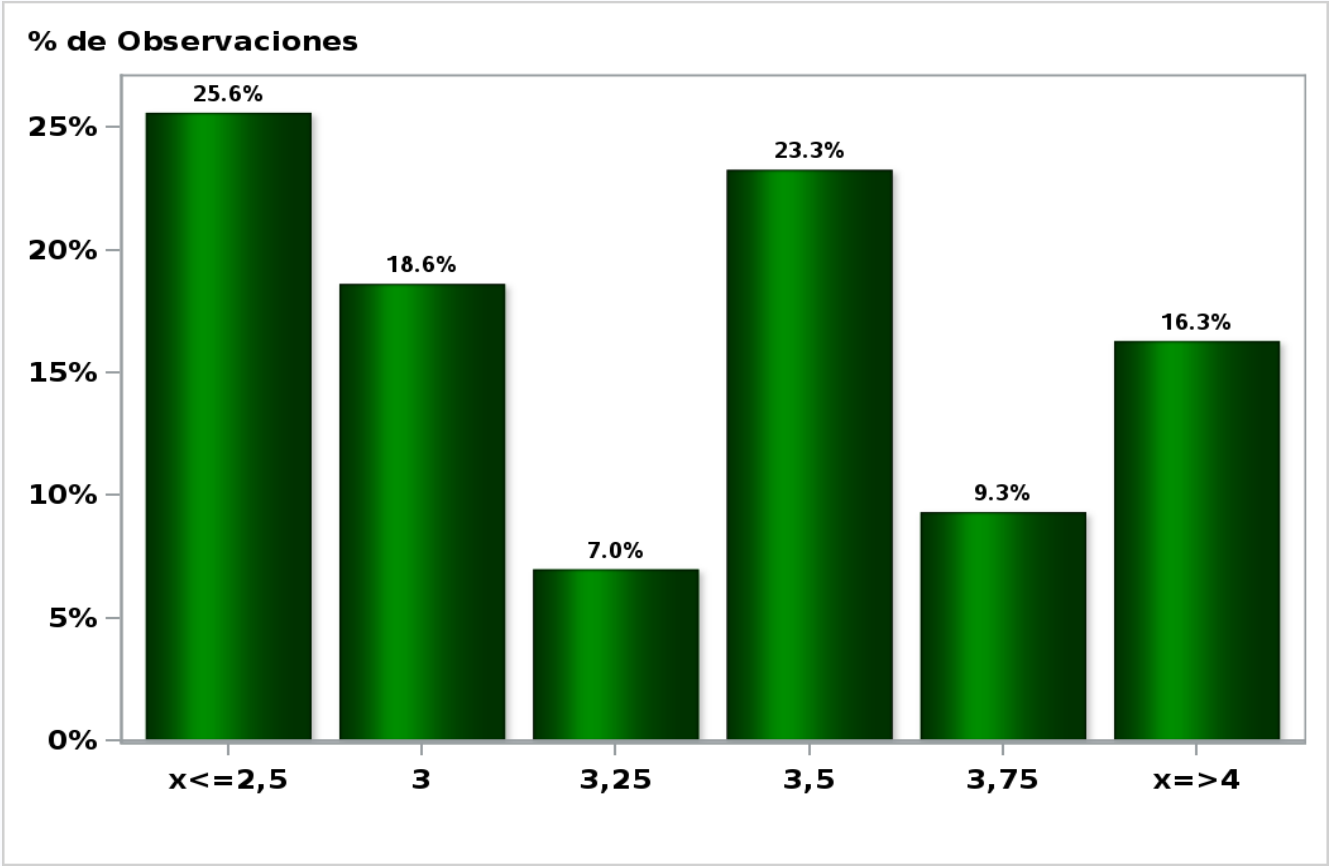
Answers: 45 Median: 3%



[Click to view summary table](#)

Monthly Survey On Expectations May 2021
Long-term Average Monetary Policy rate target

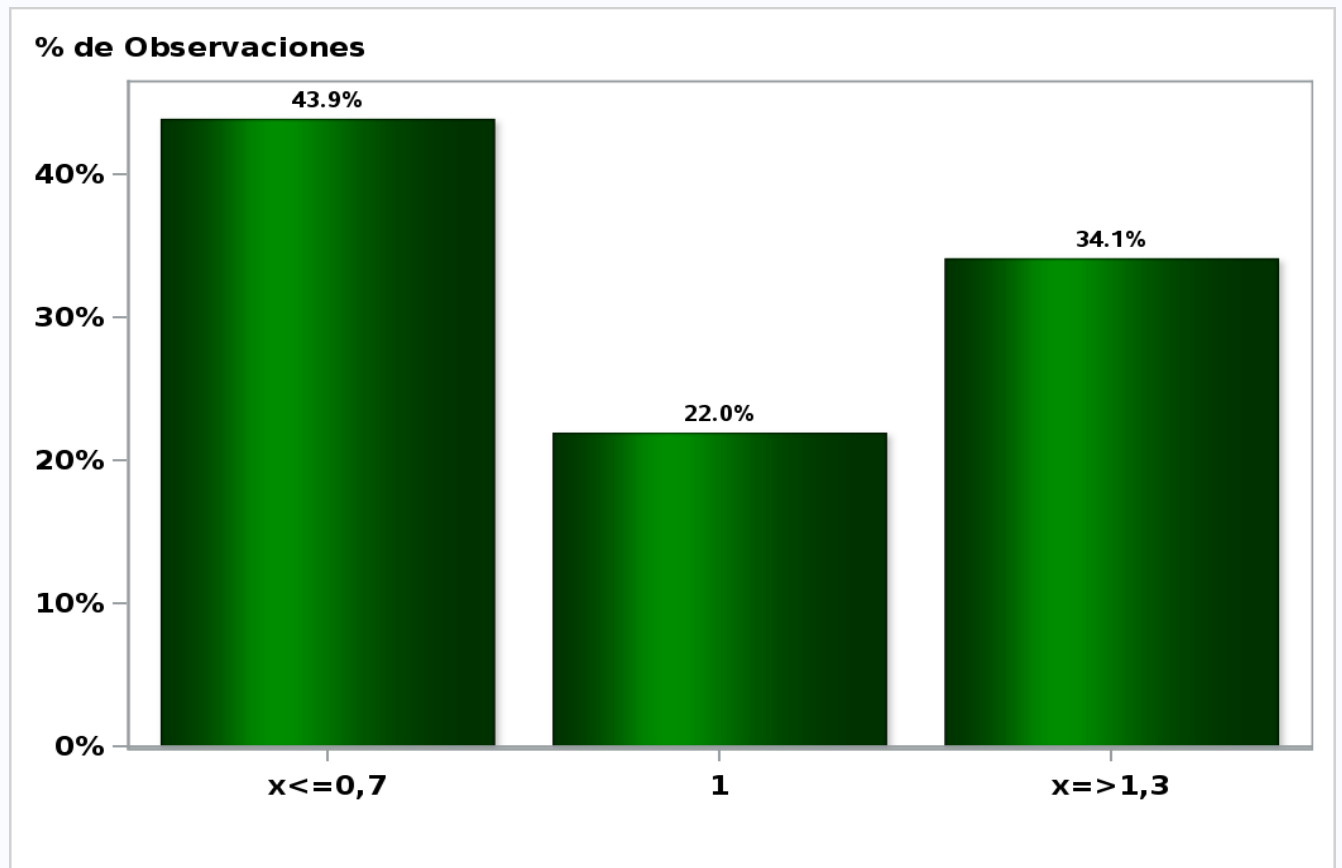
Answers: 43 Median: 3,25%



[Click to view summary table](#)

Monthly Survey On Expectations May 2021
Long-term Average Exchange Rate (12-month change)

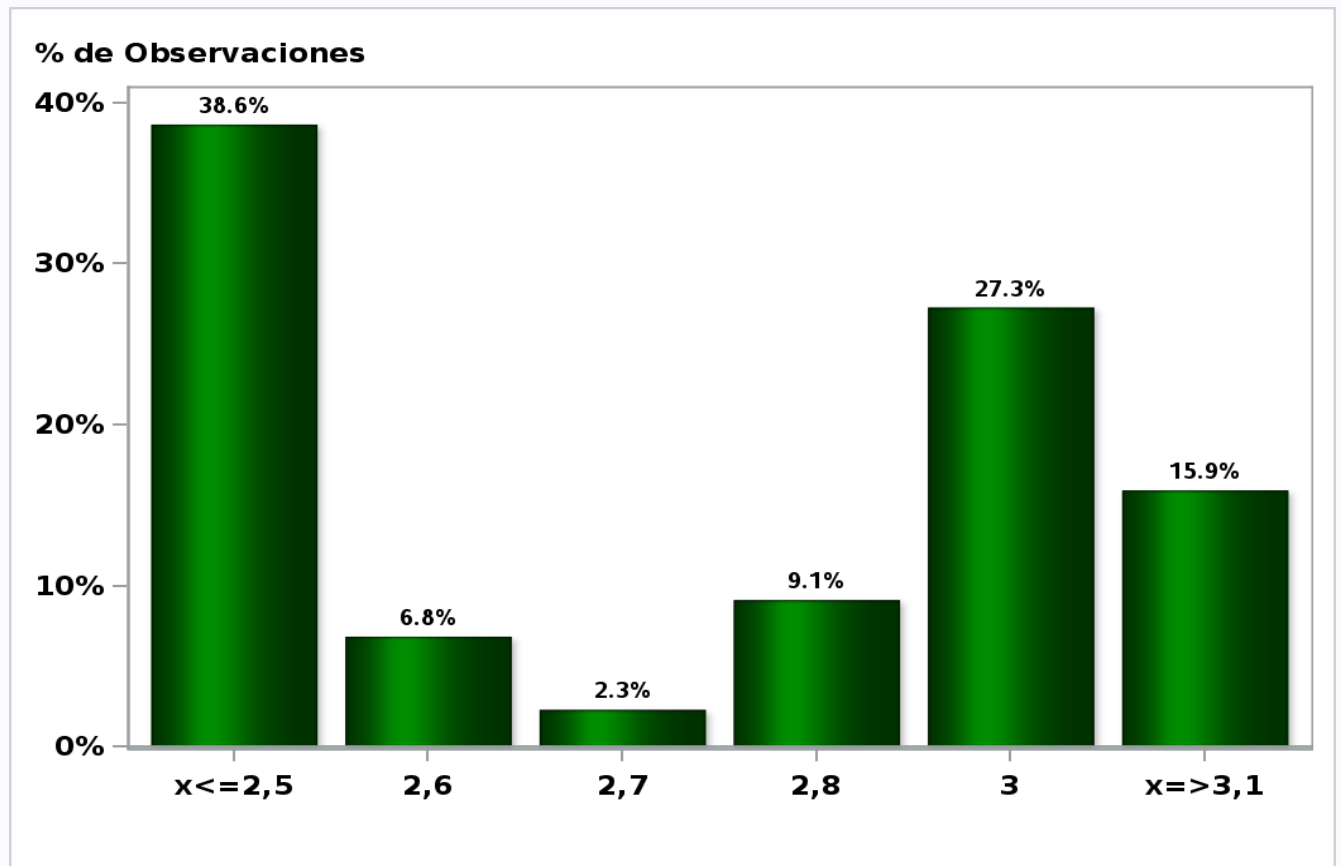
Answers: 41 Median: 1%



[Click to view summary table](#)

Monthly Survey On Expectations May 2021
Long-term Average GDP (12-month change)

Answers: 44 Median: 2,8%



[Click to view summary table](#)