

# MONTHLY SURVEY ON EXPECTATIONS November 2018

Sent on: 5 November 2018

Deadline for responses: 9 November 2018

Variable	Median	Decile 1	Decile 9	Answers	Graph
<b>1.Inflation (% change)</b>					
Current month (monthly change)	0.20	0.10	0.30	57	<a href="#">Graph1</a>
Next month (monthly change)	0.10	0.00	0.30	57	<a href="#">Graph2</a>
In eleven months (12-month change)	3.00	2.80	3.10	57	<a href="#">Graph3</a>
In twenty three months (12-month change)	3.00	3.00	3.10	55	<a href="#">Graph4</a>
December 2019 (12-month change)	3.00	2.80	3.20	57	<a href="#">Graph5</a>
December 2020 (12-month change)	3.00	3.00	3.10	55	<a href="#">Graph6</a>
<b>2.Monetary Policy rate target (%) (*)</b>					
Following meeting	2.75	2.75	3.00	57	<a href="#">Graph7</a>
Second following meeting	3.00	2.75	3.00	57	<a href="#">Graph8</a>
In five months	3.00	3.00	3.25	57	<a href="#">Graph9</a>
December 2019	3.50	3.25	3.75	57	<a href="#">Graph10</a>
In eleven months	3.50	3.25	3.75	57	<a href="#">Graph11</a>
In seventeen months	3.75	3.25	4.00	55	<a href="#">Graph12</a>
In twenty three months	4.00	3.50	4.25	55	<a href="#">Graph13</a>
<b>3.5-Year BCU (%) (*)</b>					
In two months	1.30	1.20	1.40	50	<a href="#">Graph14</a>
In eleven months	1.40	1.20	1.70	49	<a href="#">Graph15</a>
In twenty three months forward	1.50	1.10	2.00	48	<a href="#">Graph16</a>
<b>4.5-Year BCP (%) (*)</b>					
In two months	4.30	4.10	4.40	50	<a href="#">Graph17</a>
In eleven months	4.40	4.20	4.80	49	<a href="#">Graph18</a>
In twenty three months forward	4.50	4.20	5.20	48	<a href="#">Graph19</a>
<b>5.Exchange Rate (CH \$ per US\$ 1) (*)</b>					
In two months	670.00	650.00	680.00	55	<a href="#">Graph20</a>
In eleven months	660.00	630.00	685.00	55	<a href="#">Graph21</a>
In twenty three months forward	650.00	615.00	690.00	55	<a href="#">Graph22</a>
<b>6.IMACEC (Monthly Activity Index)</b>					
One month ago	3.60	3.00	4.50	56	<a href="#">Graph23</a>
<b>7.IMACEC No Mining (monthly activity index)</b>					
One month ago	3.90	3.00	5.00	44	<a href="#">Graph24</a>
<b>8.GDP (12-month change)</b>					
EWithin calendar quarter of the survey	3.30	2.80	3.70	55	<a href="#">Graph25</a>
Year 2018	4.00	3.80	4.10	57	<a href="#">Graph26</a>
Year 2019	3.50	3.40	3.80	56	<a href="#">Graph27</a>
Year 2020	3.50	3.20	4.00	55	<a href="#">Graph28</a>
<b>9.GDP No Mining (12-month change)</b>					
Within calendar quarter of the survey	3.50	3.00	4.00	43	<a href="#">Graph29</a>
Year 2018	4.00	3.50	4.20	43	<a href="#">Graph30</a>
Year 2019	3.80	3.30	4.00	42	<a href="#">Graph31</a>
Year 2020	3.60	3.20	4.00	42	<a href="#">Graph32</a>

(\*) End of the month.

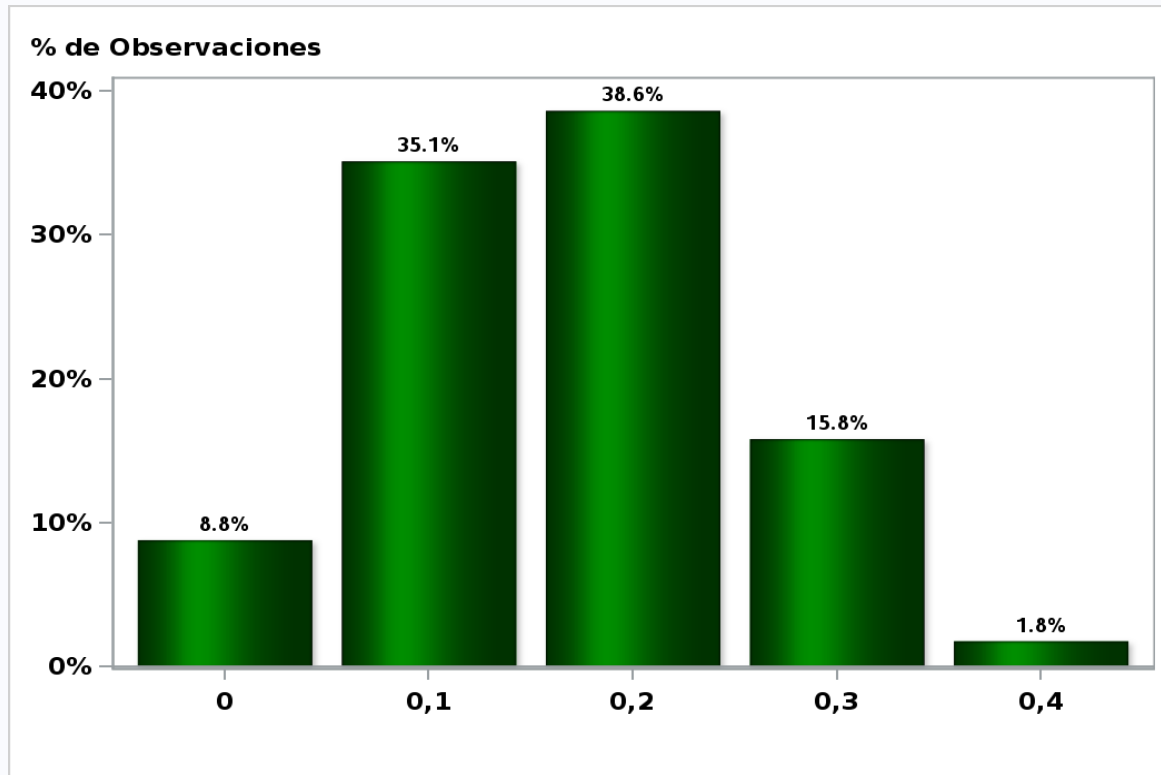
Monthly survey of selected academics, consultants, and executives or advisors of financial institutions and corporations. It is completed the day after the publication of the CPI or IMACEC (Monthly activity index), whichever the last known, and it is published the day after its reception, at 8:30 hrs. approximately ([www.bcentral.cl](http://www.bcentral.cl), Statistics section, Economic Surveys, Website: <http://www.bcentral.cl/en/web/central-bank-of-chile/economic-expectations>)

The sample size of surveyed analysts was increased since April 2011.

## Monthly Survey On Expectations November 2018

Inflation current month (monthly change)

**Answers: 57 Median: 0,2%**

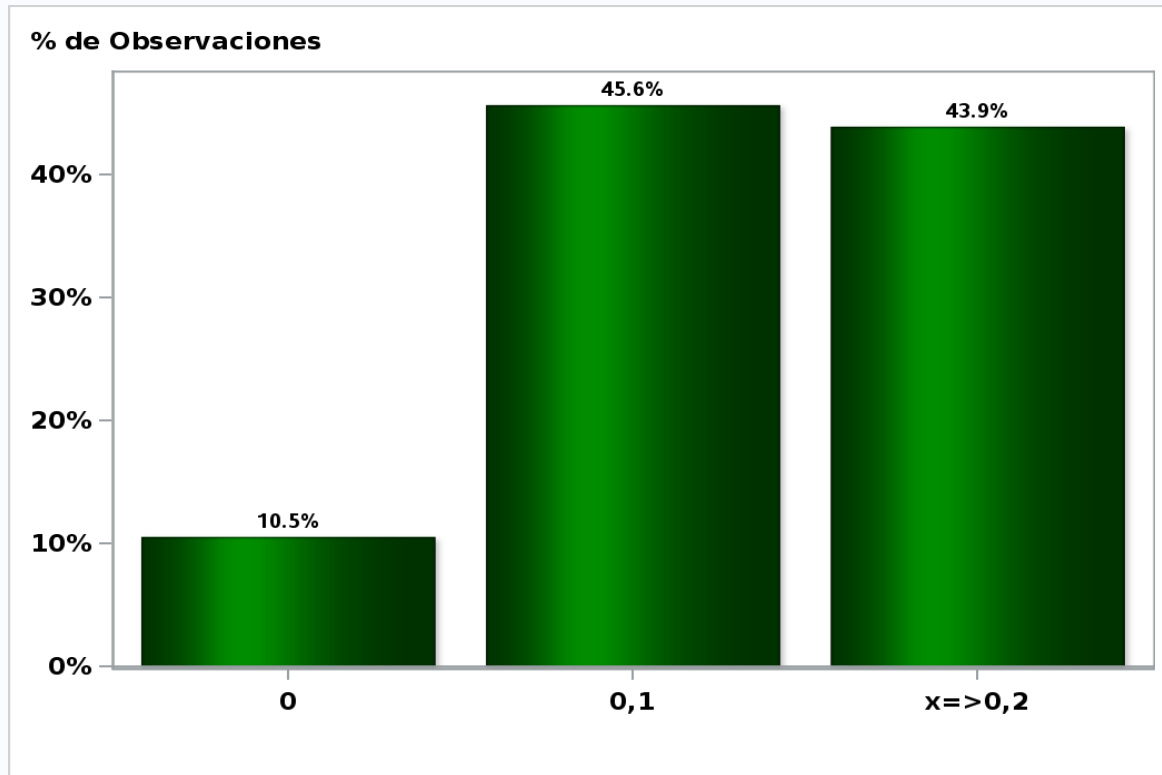


[Click to view summary table](#)

## Monthly Survey On Expectations November 2018

Inflation next month (monthly change)

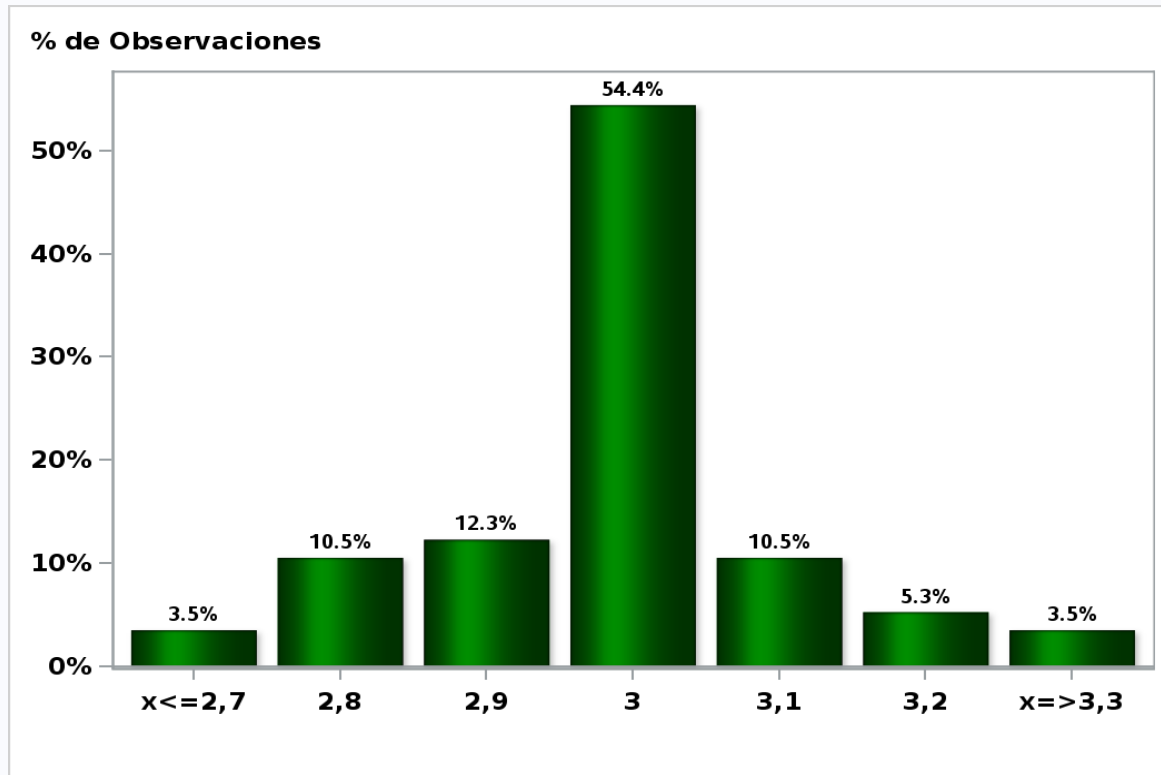
**Answers: 57 Median: 0,1%**



[Click to view summary table](#)

**Monthly Survey On Expectations November 2018**  
**Inflation in eleven months (12-month change)**

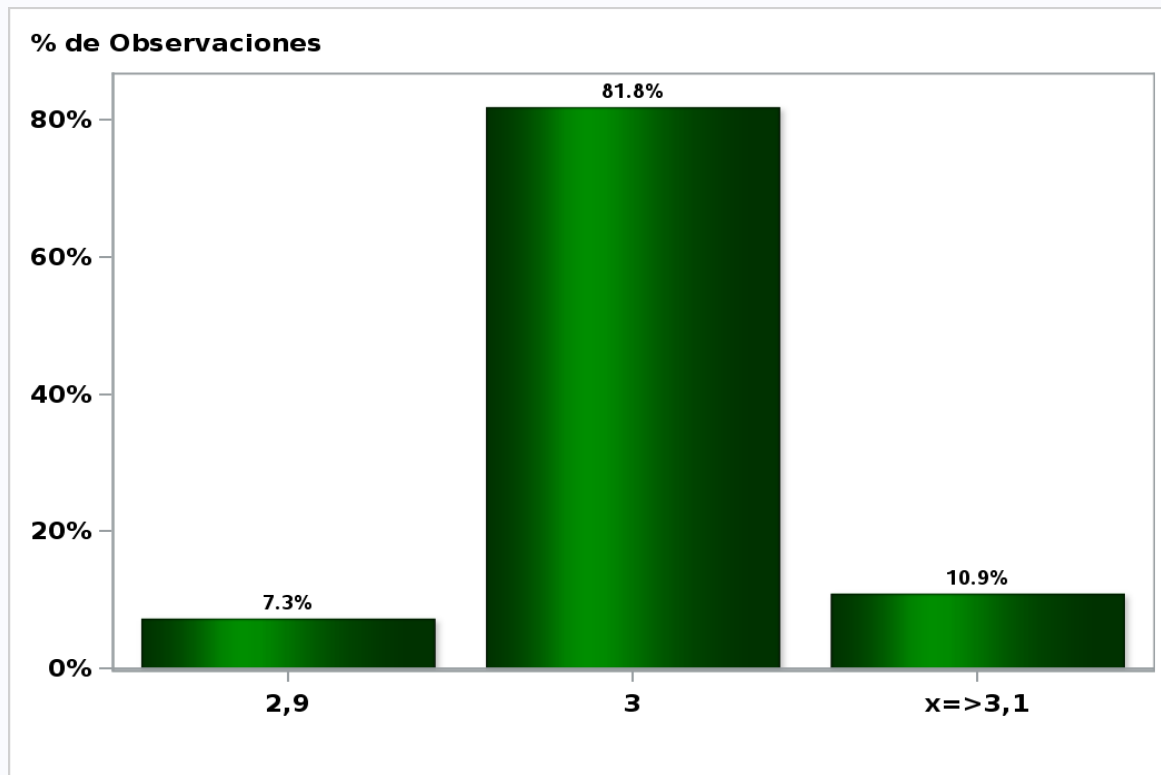
**Answers: 57 Median: 3%**



[Click to view summary table](#)

**Monthly Survey On Expectations November 2018**  
**Inflation in twenty three months (12-month change)**

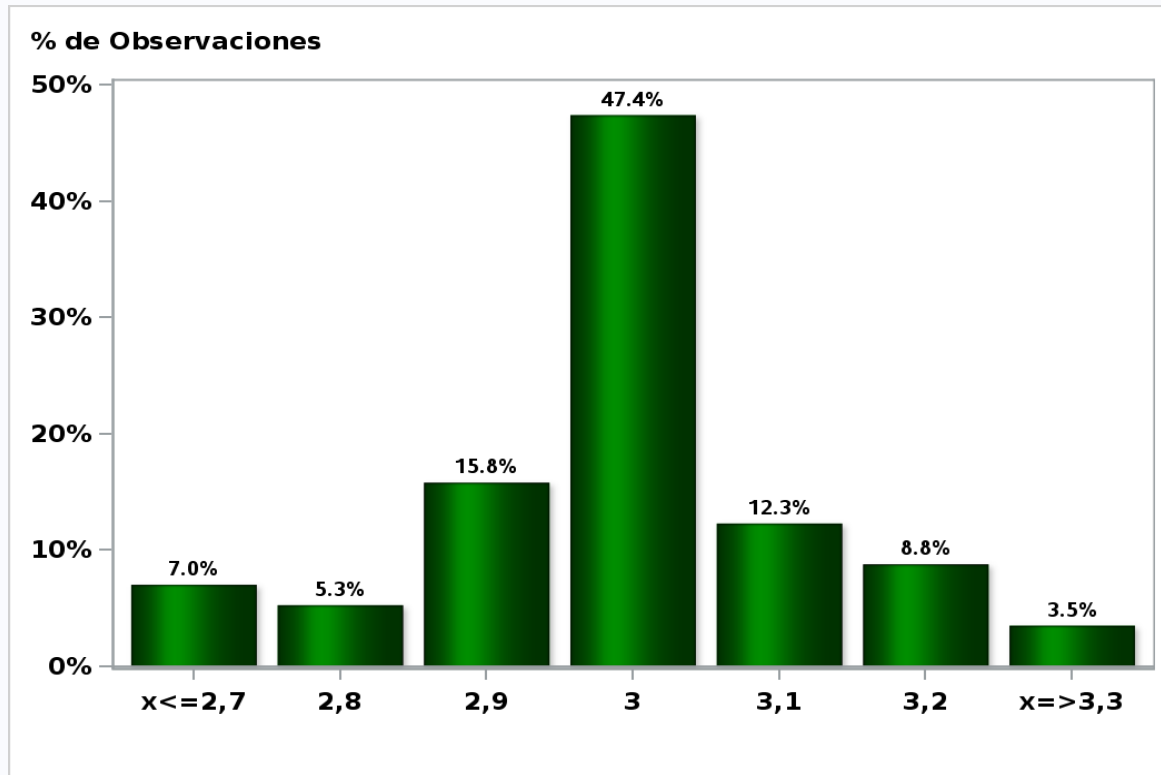
**Answers: 55 Median: 3%**



[Click to view summary table](#)

**Monthly Survey On Expectations November 2018  
Inflation december 2019 ( 12-month change )**

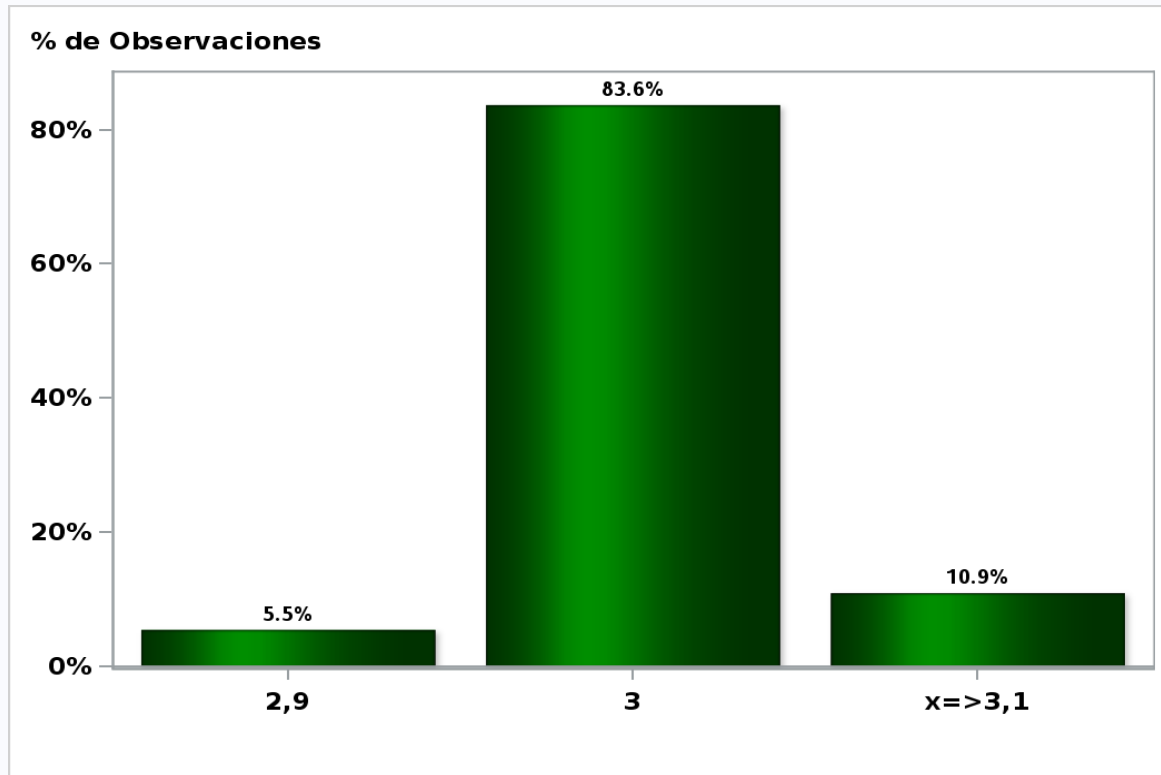
**Answers: 57 Median: 3%**



[Click to view summary table](#)

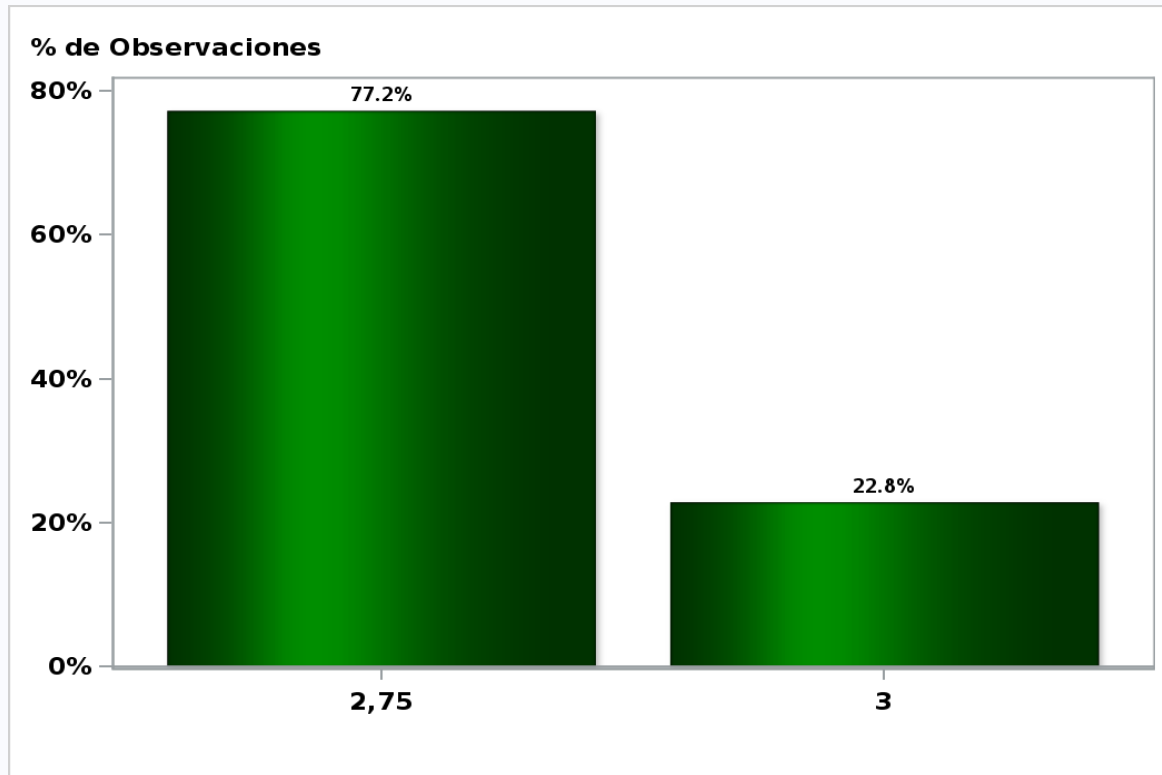
**Monthly Survey On Expectations November 2018**  
**Inflation december 2020 ( 12-month change )**

**Answers: 55 Median: 3%**



[Click to view summary table](#)

**Monthly Survey On Expectations November 2018**  
**Monetary Policy rate target following meeting**  
**Answers: 57 Median: 2,75%**

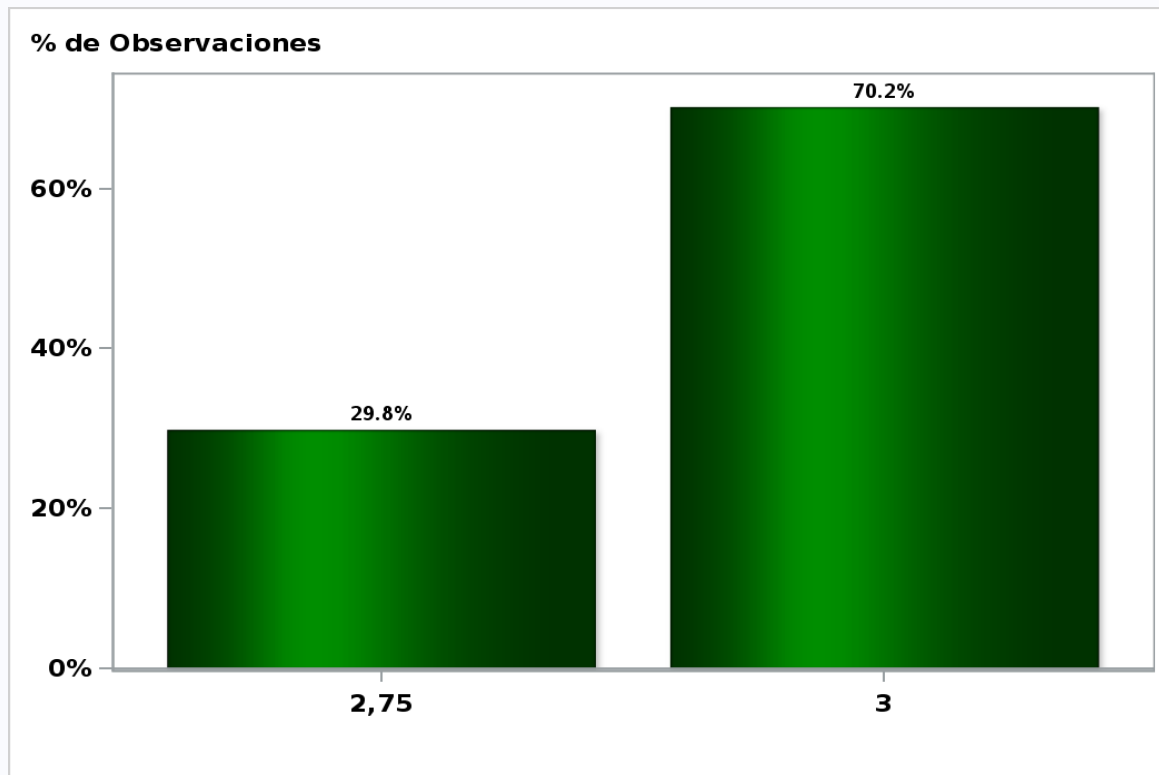


[Click to view summary table](#)



**Monthly Survey On Expectations November 2018**  
**Monetary Policy rate target second following meeting**

**Answers: 57 Median: 3%**

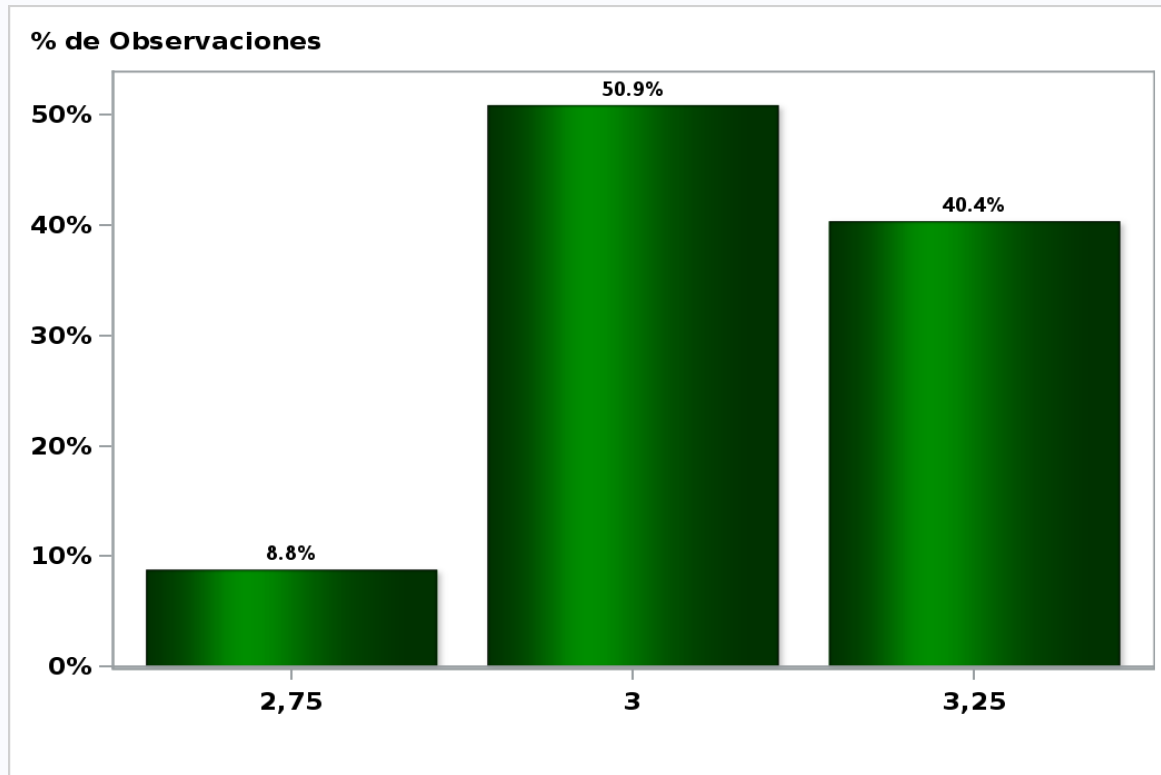


[Click to view summary table](#)

## Monthly Survey On Expectations November 2018

### Monetary Policy rate target In five months

**Answers: 57 Median: 3%**

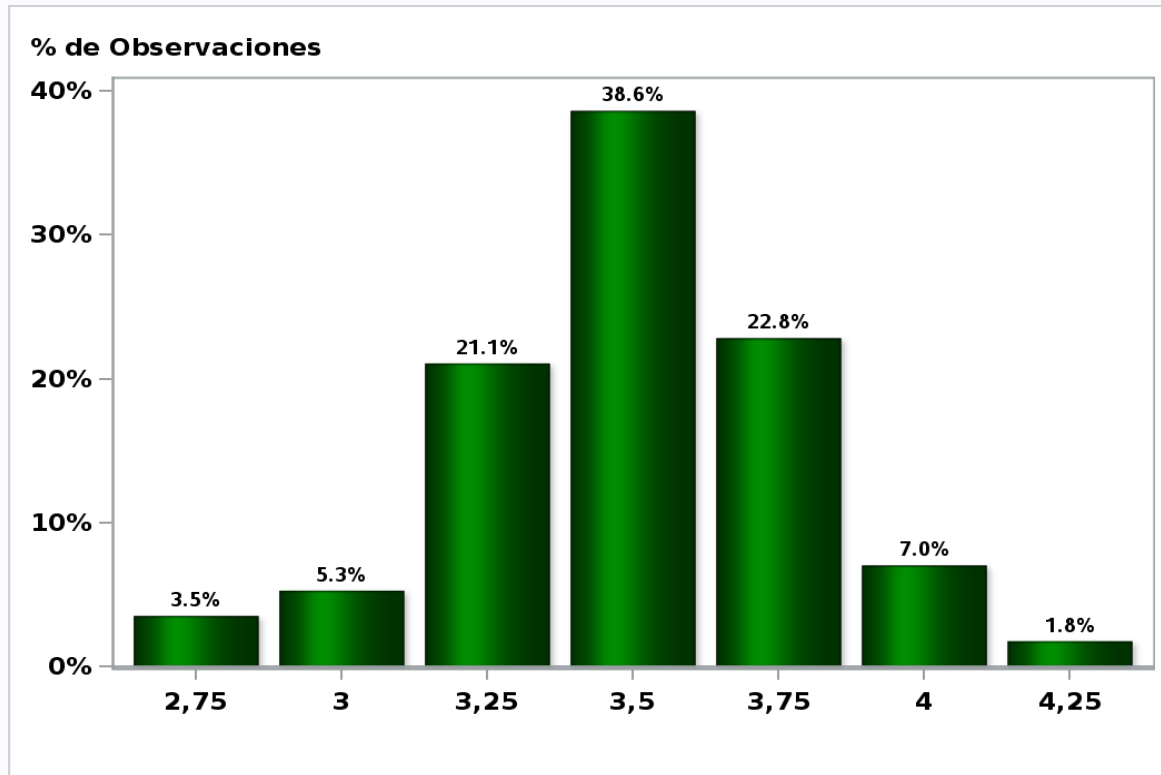


[Click to view summary table](#)

## Monthly Survey On Expectations November 2018

### Monetary Policy rate target december 2019

**Answers: 57 Median: 3,5%**

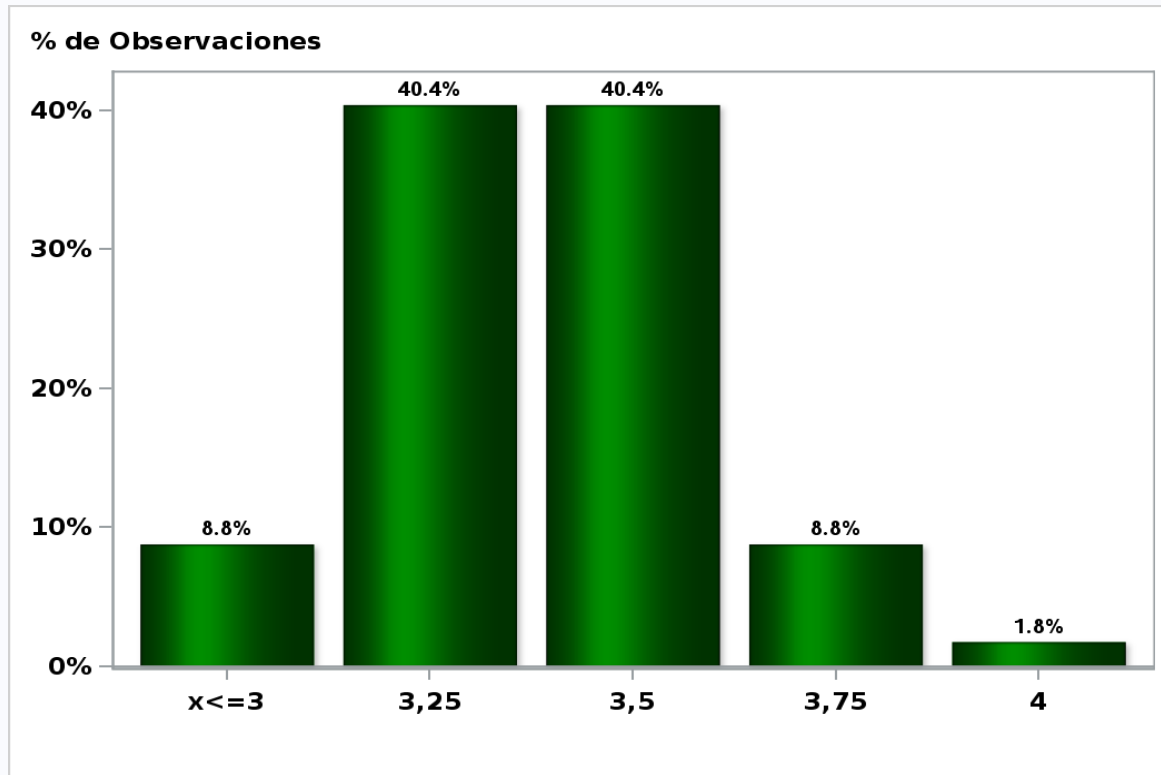


[Click to view summary table](#)

## Monthly Survey On Expectations November 2018

### Monetary Policy rate target in eleven months

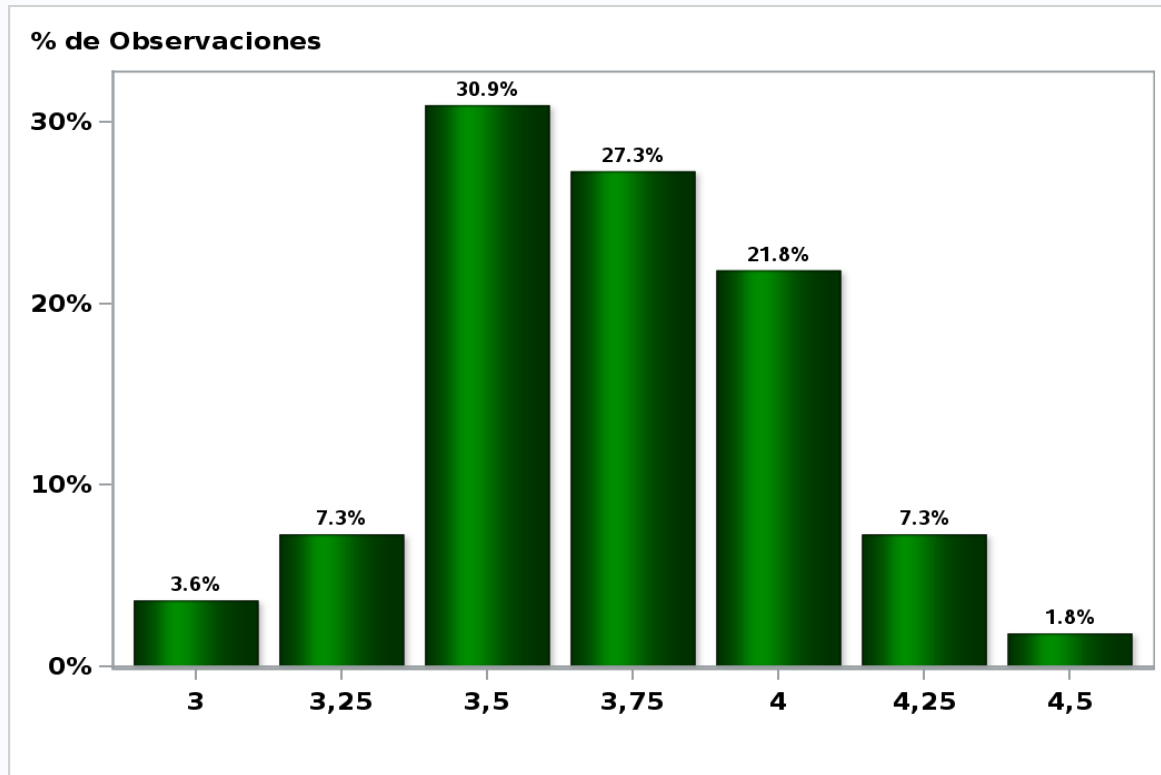
**Answers: 57 Median: 3,5%**



[Click to view summary table](#)

**Monthly Survey On Expectations November 2018**  
**Monetary Policy rate target in seventeen months**

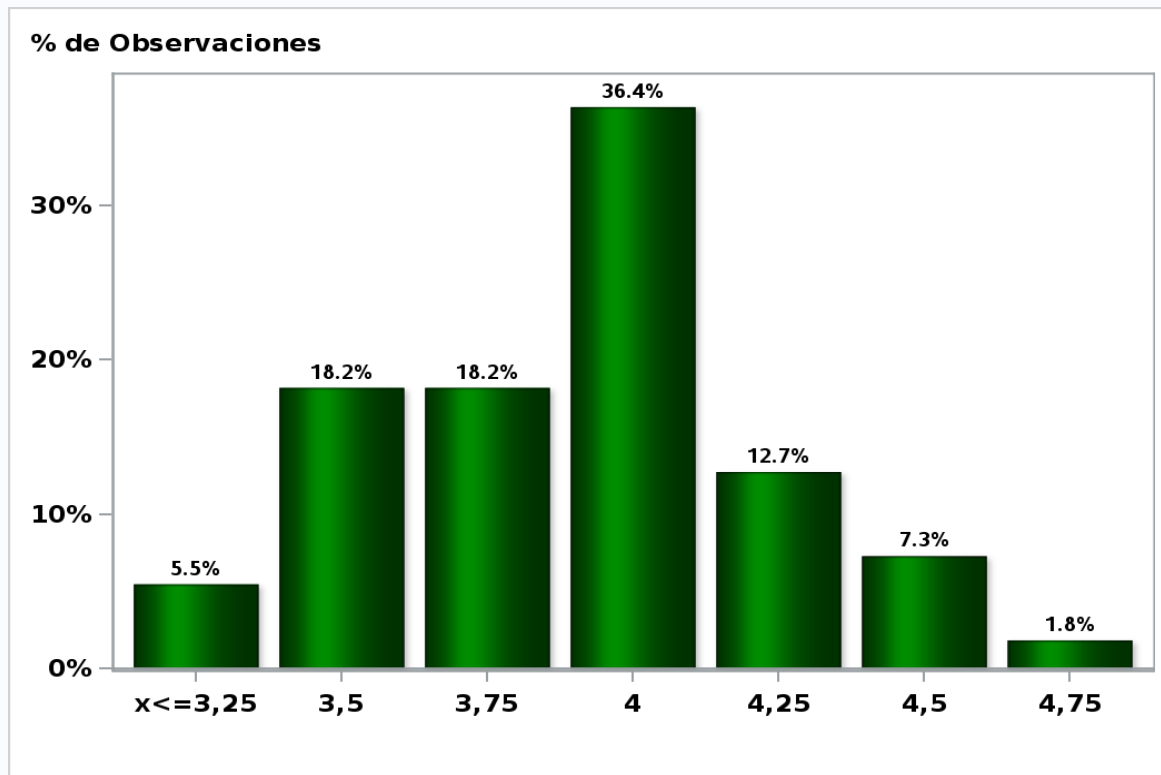
**Answers: 55 Median: 3,75%**



[Click to view summary table](#)

**Monthly Survey On Expectations November 2018**  
**Monetary Policy rate target in twenty three months**

**Answers: 55 Median: 4%**

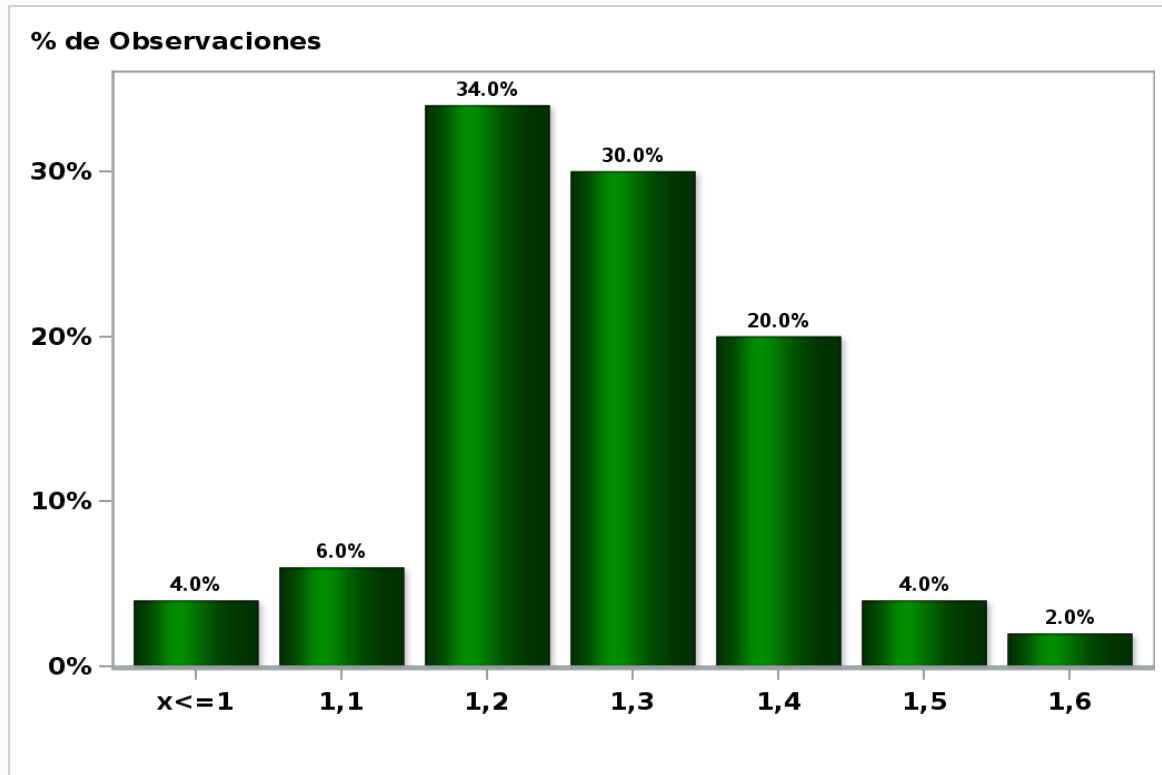


[Click to view summary table](#)

## Monthly Survey On Expectations November 2018

5-Year BCU In two months

Answers: 50 Median: 1,3%

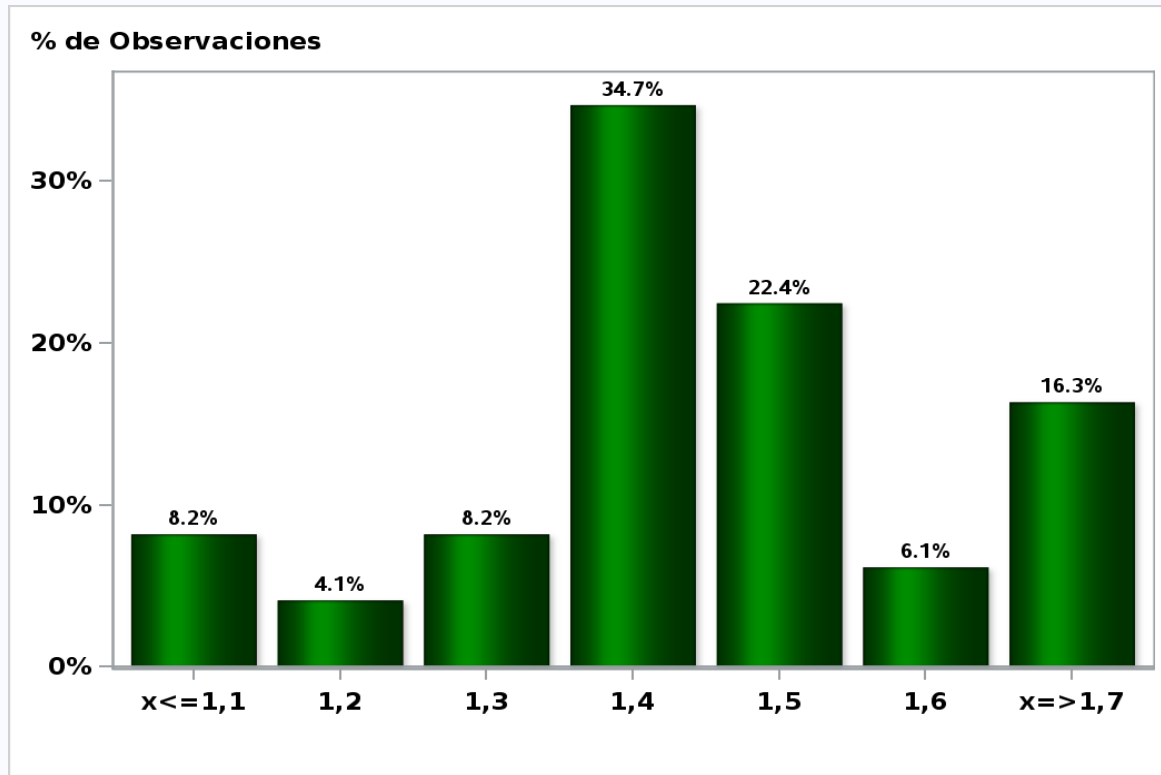


[Click to view summary table](#)

## Monthly Survey On Expectations November 2018

5-Year BCU in eleven months

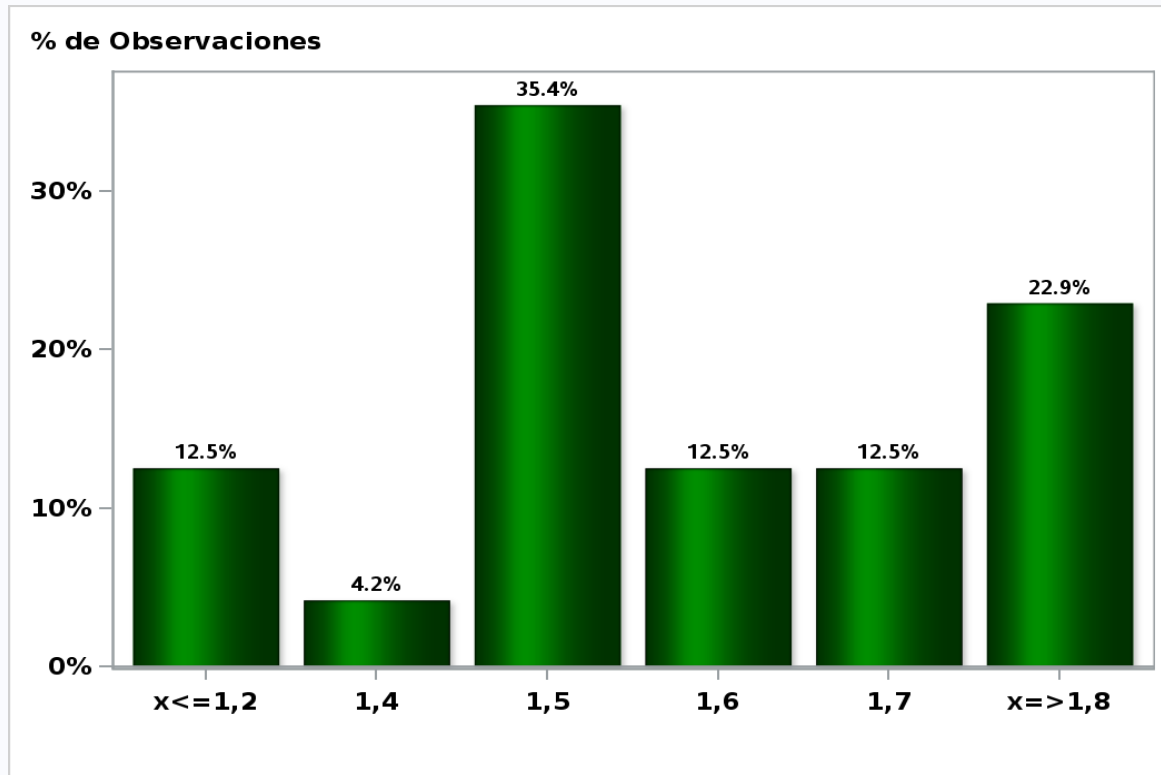
Answers: 49 Median: 1,4%



[Click to view summary table](#)



**Monthly Survey On Expectations November 2018**  
**5-Year BCU in twenty three months forward**  
**Answers: 48 Median: 1,5%**

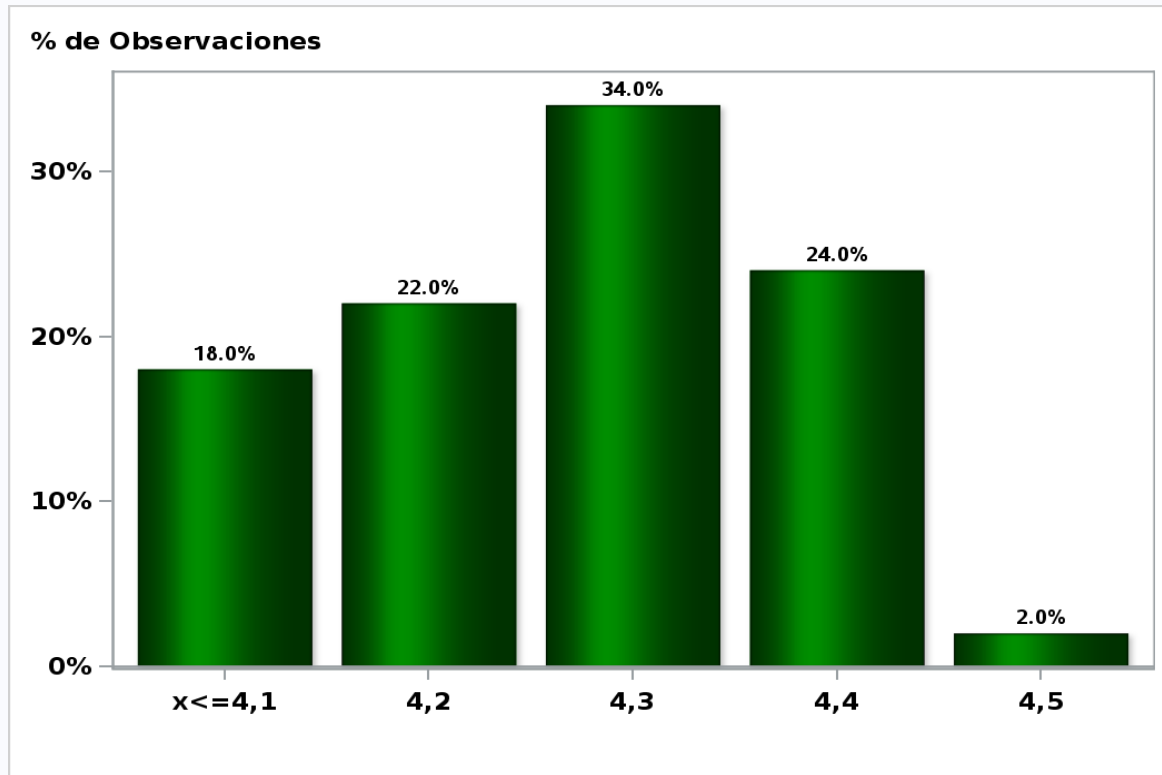


[Click to view summary table](#)

## Monthly Survey On Expectations November 2018

5-Year BCP in two months

Answers: 50 Median: 4,3%

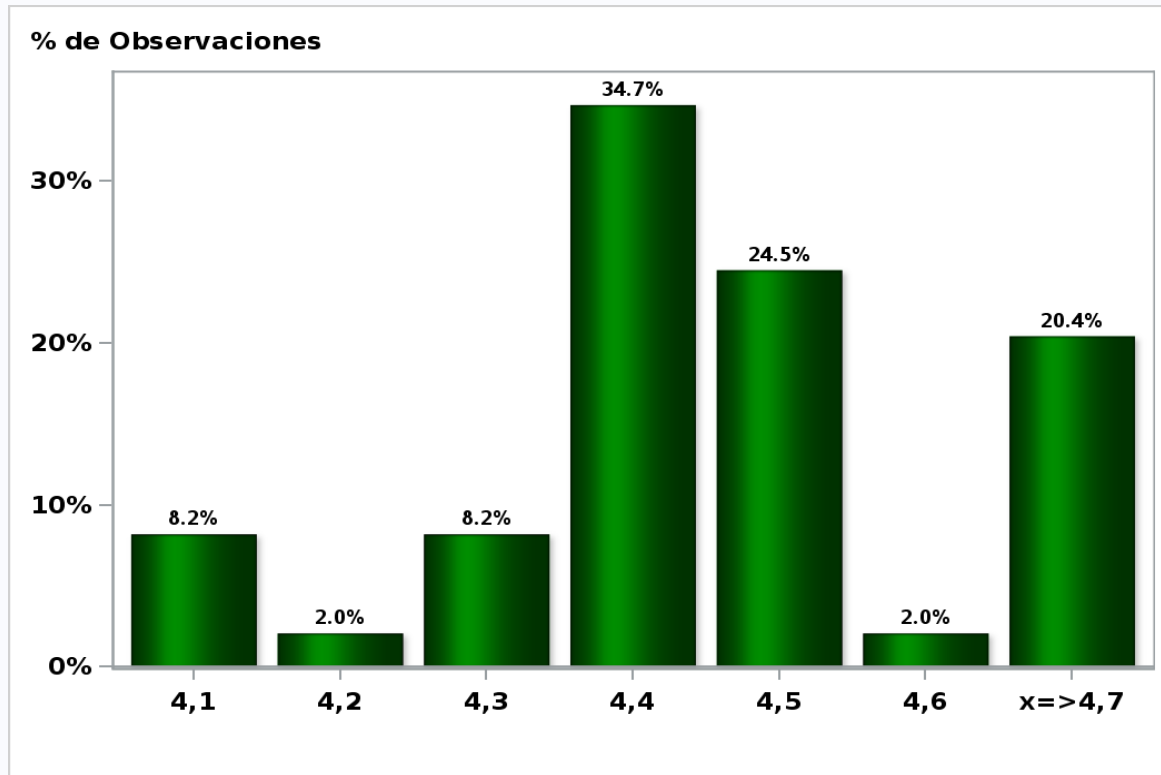


[Click to view summary table](#)

## Monthly Survey On Expectations November 2018

### 5-Year BCP in eleven months

Answers: 49 Median: 4,4%

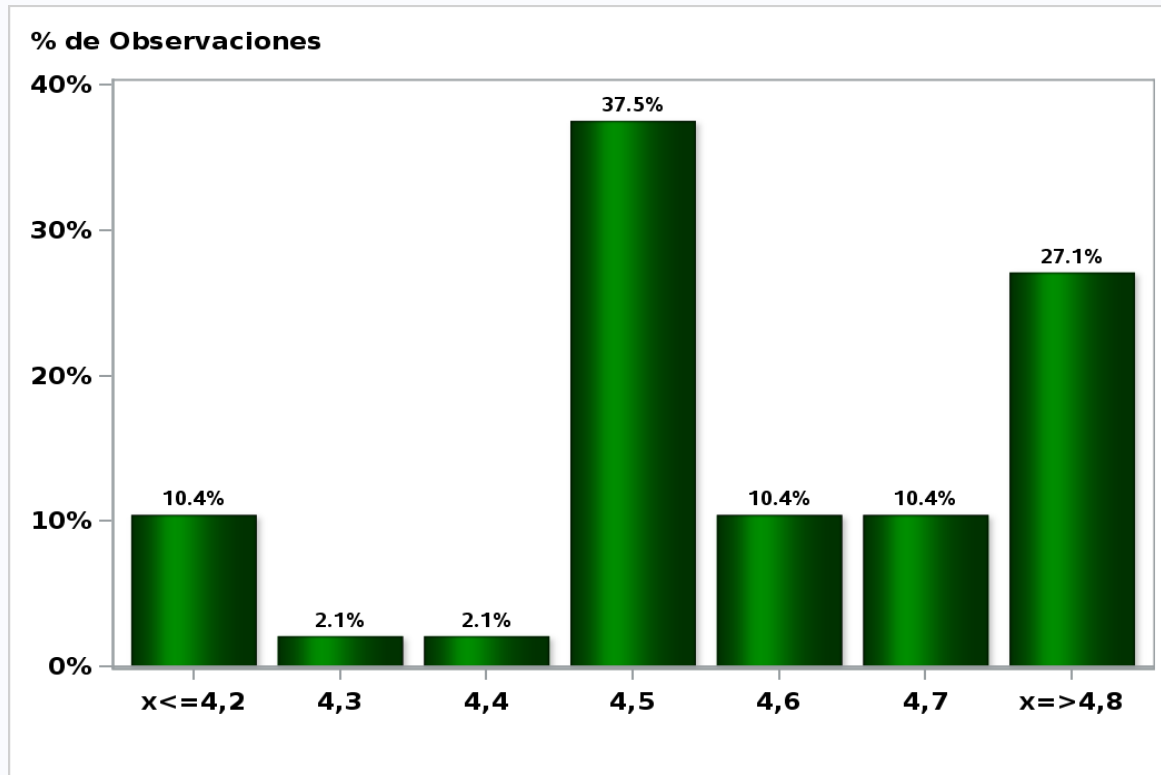


[Click to view summary table](#)

## Monthly Survey On Expectations November 2018

### 5-Year BCP in twenty three months forward

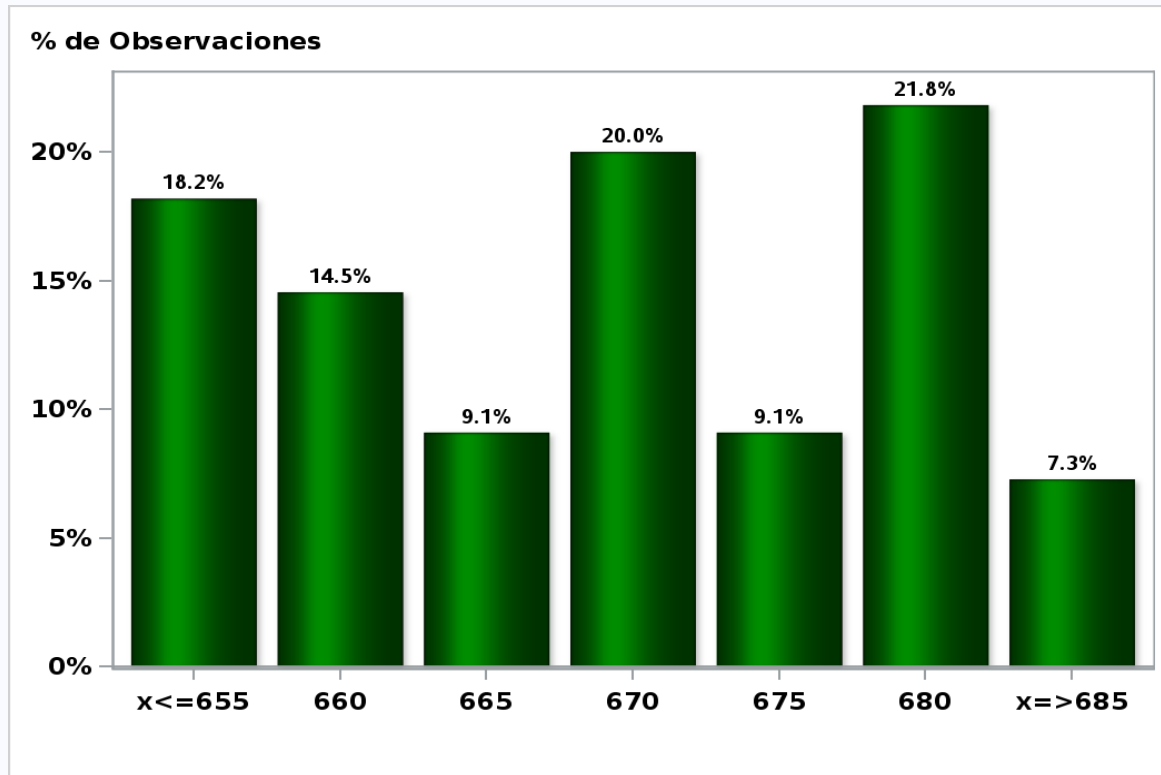
**Answers: 48 Median: 4,5%**



[Click to view summary table](#)

**Monthly Survey On Expectations November 2018**  
**Exchange Rate in two months (CH \$ per US\$)**

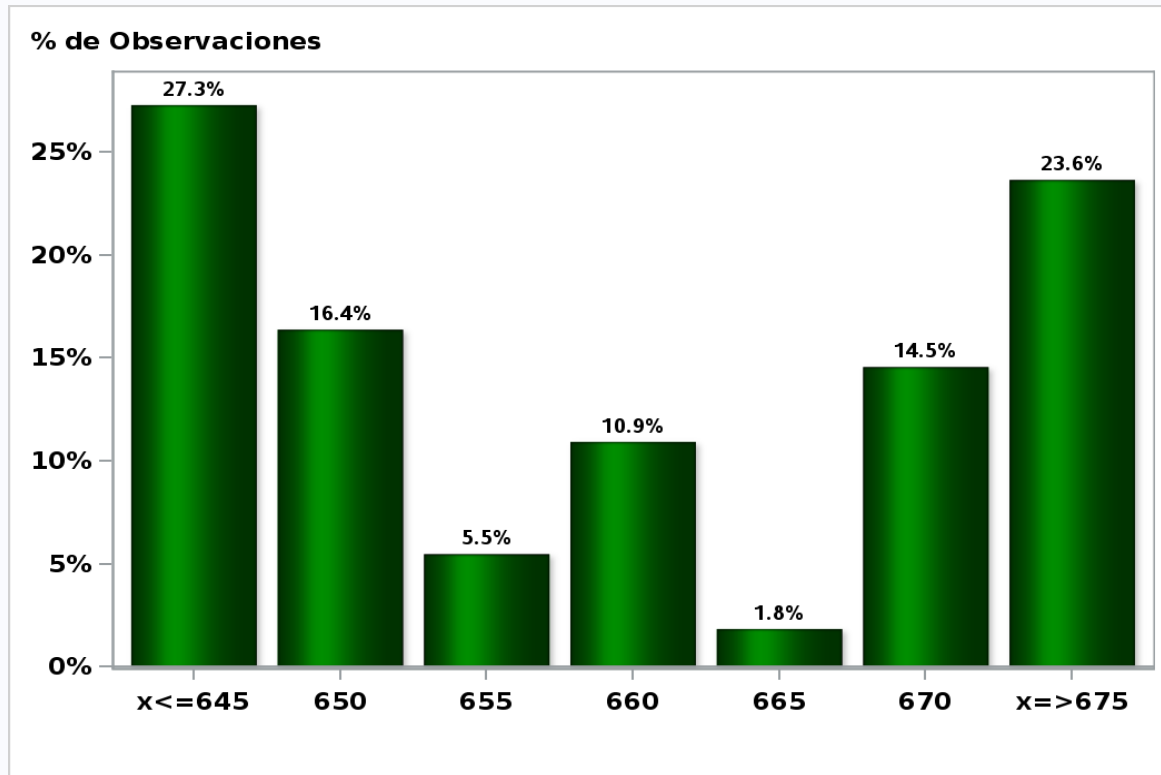
**Answers: 55 Median: \$670**



[Click to view summary table](#)

**Monthly Survey On Expectations November 2018**  
**Exchange Rate in eleven months (CH \$ per US\$)**

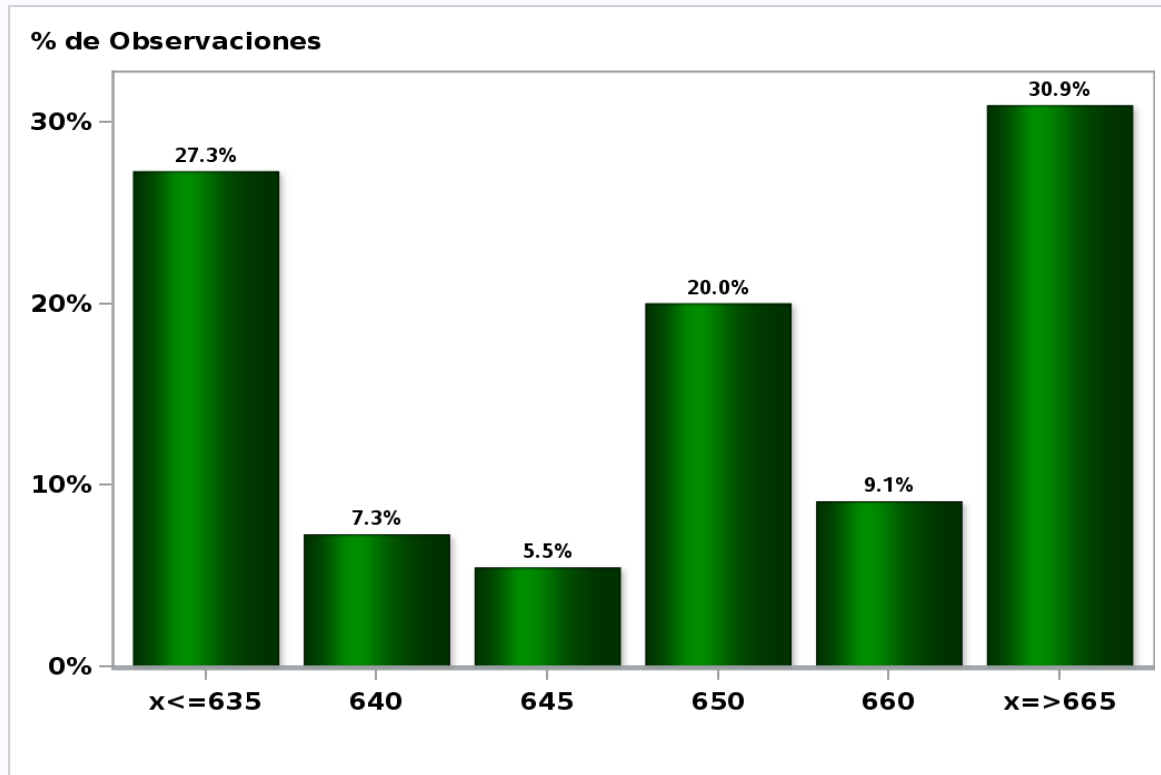
**Answers: 55 Median: \$660**



[Click to view summary table](#)

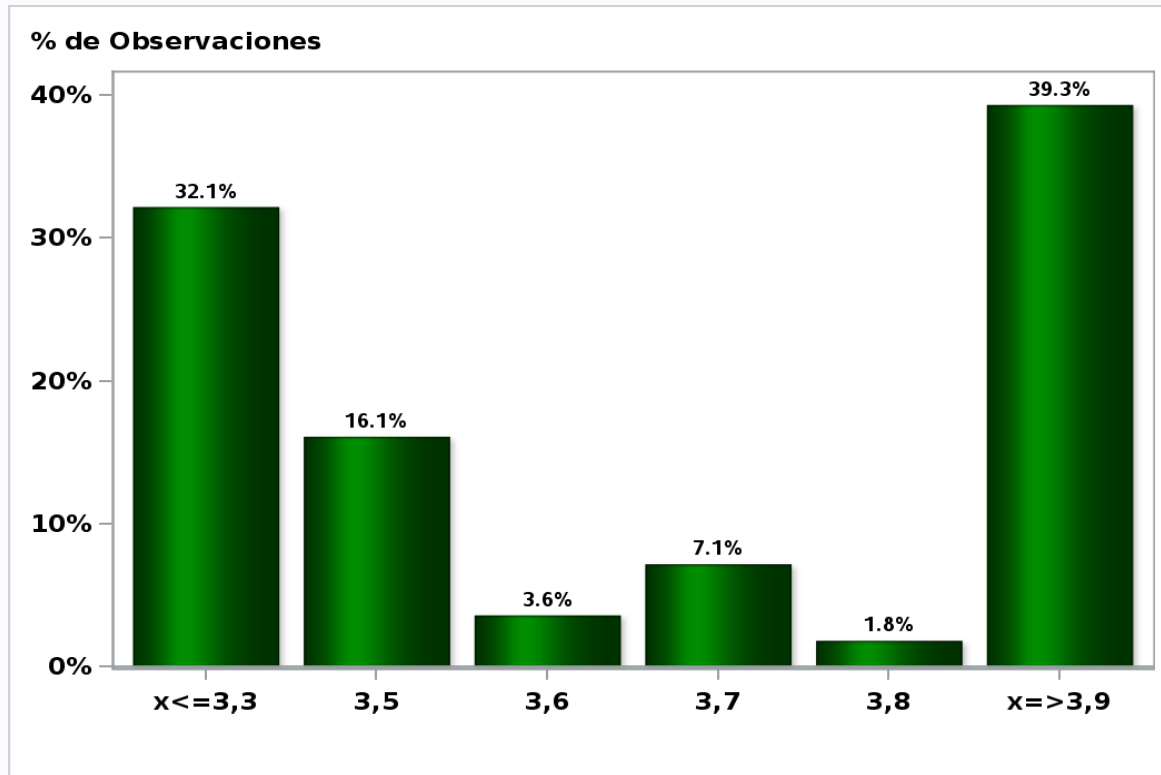
**Monthly Survey On Expectations November 2018**  
**Exchange Rate in twenty three months forward (CH \$ per US\$)**

**Answers: 55 Median: \$650**



[Click to view summary table](#)

Monthly Survey On Expectations November 2018  
IMACEC (Monthly Activity Index) one month ago  
**Answers: 56 Median: 3,6%**

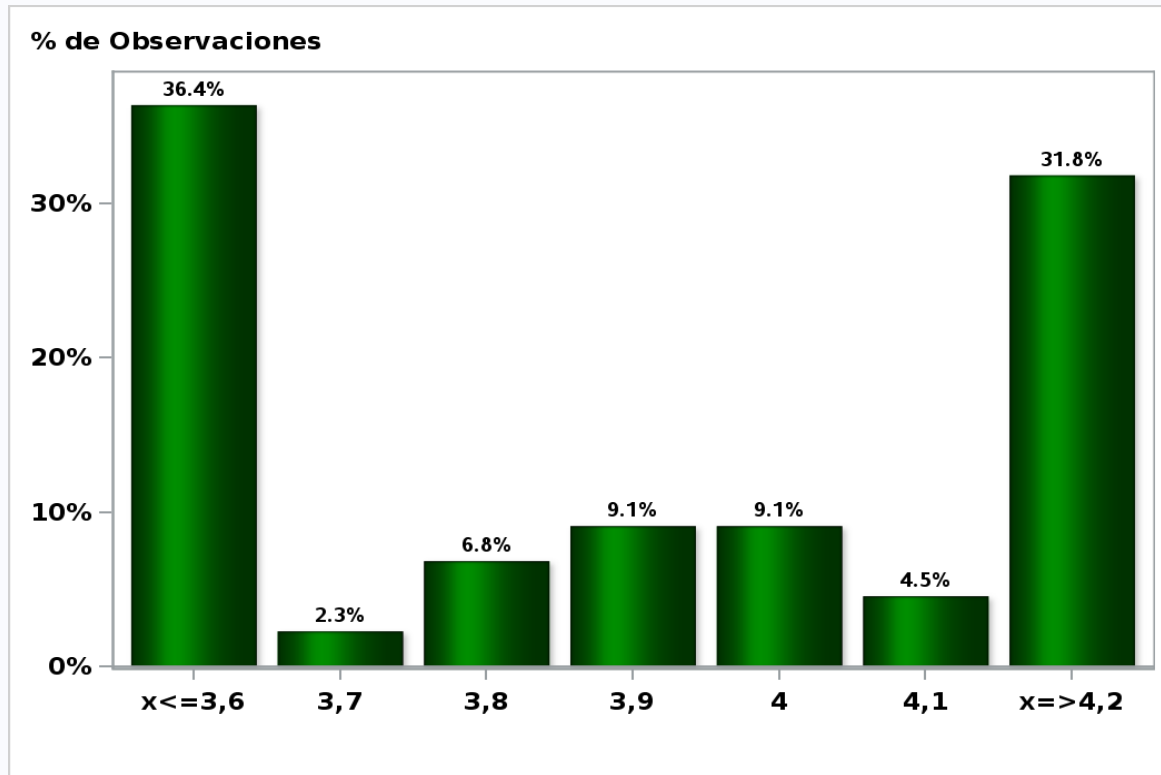


[Click to view summary table](#)



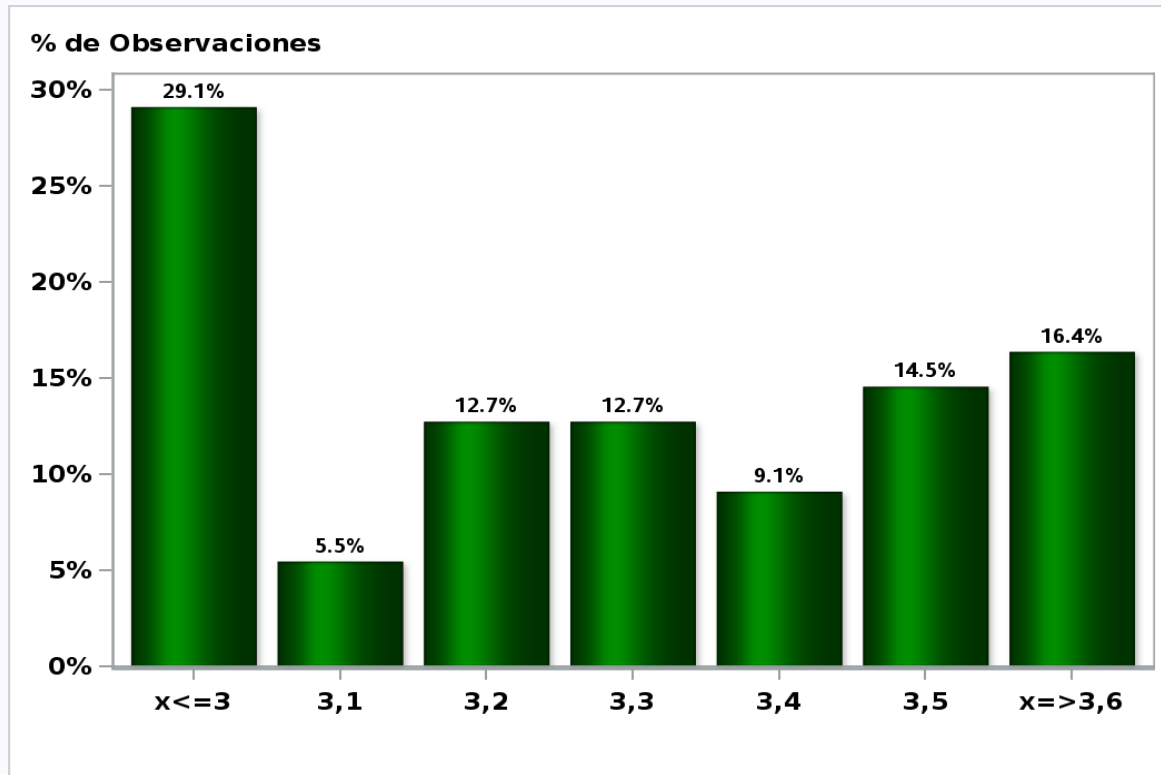
**Monthly Survey On Expectations November 2018**  
**IMACEC No Mining (Monthly Activity Index) one month ago**

**Answers: 44 Median: 3,9%**



[Click to view summary table](#)

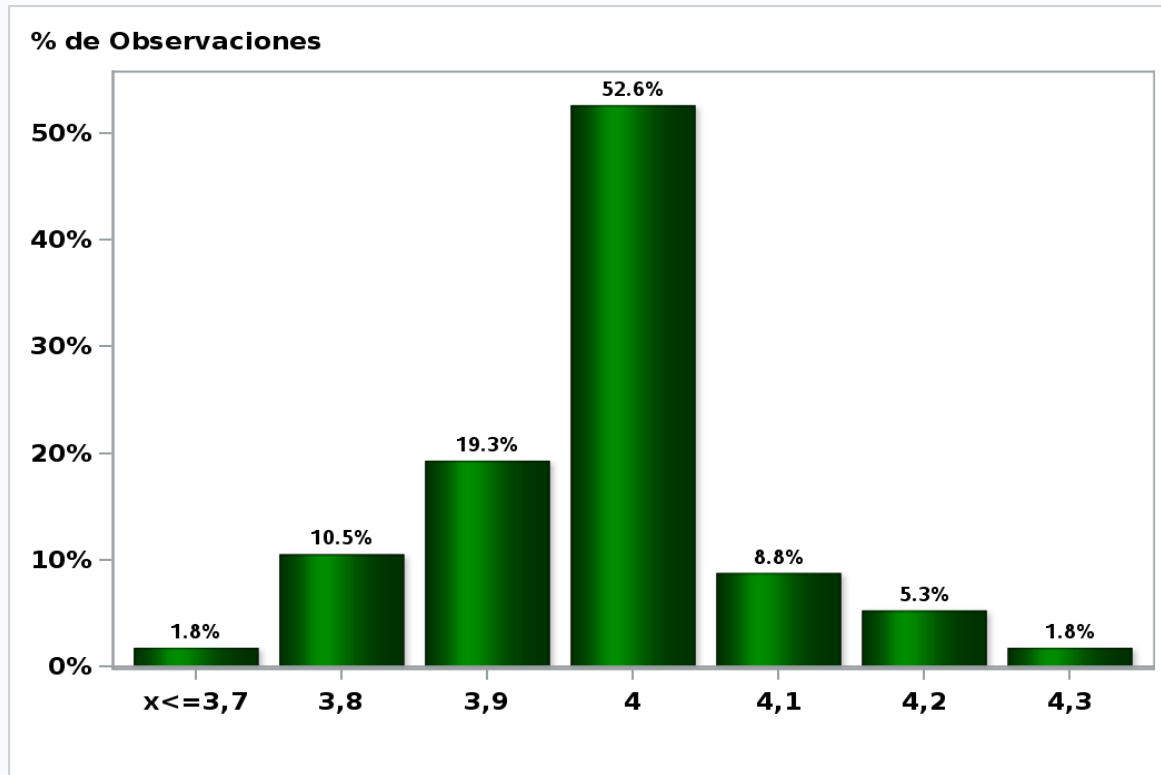
**Monthly Survey On Expectations November 2018**  
**GDP within calendar quarter of the survey**  
**Answers: 55 Median: 3,3%**



[Click to view summary table](#)

**Monthly Survey On Expectations November 2018**  
**GDP year 2018 (12-month change)**

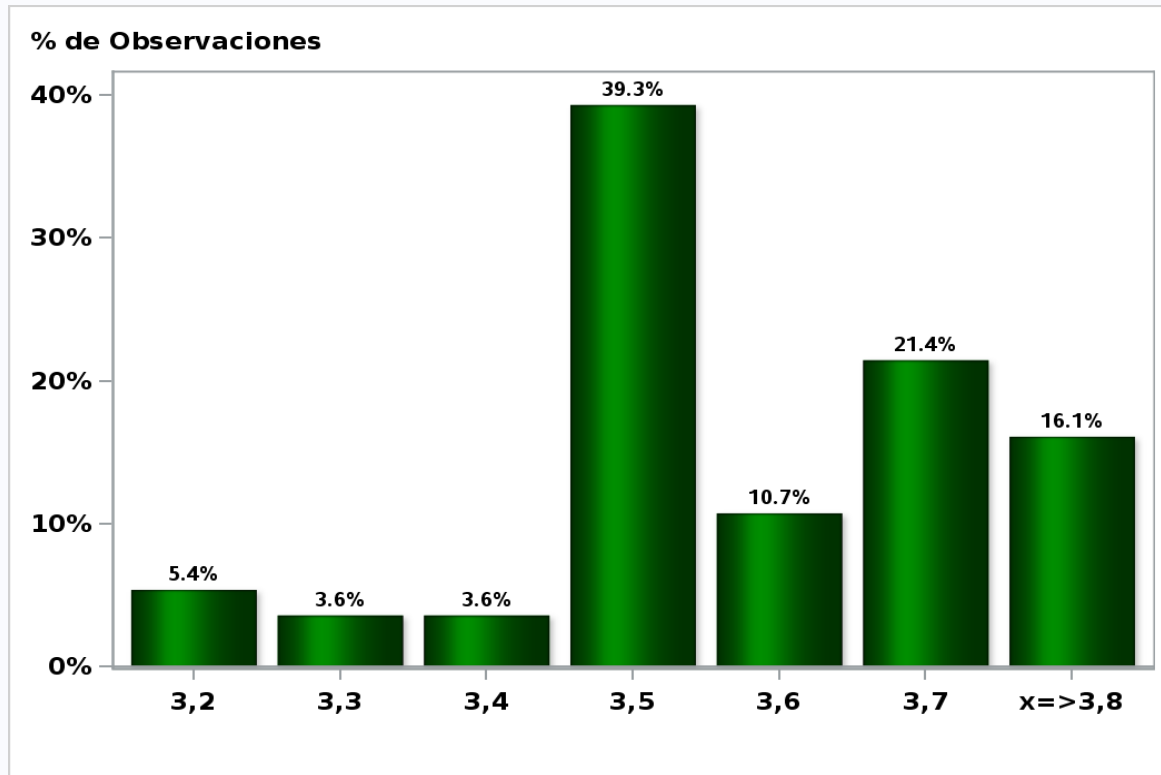
**Answers: 57 Median: 4%**



[Click to view summary table](#)

**Monthly Survey On Expectations November 2018**  
**GDP year 2019 (12-month change)**

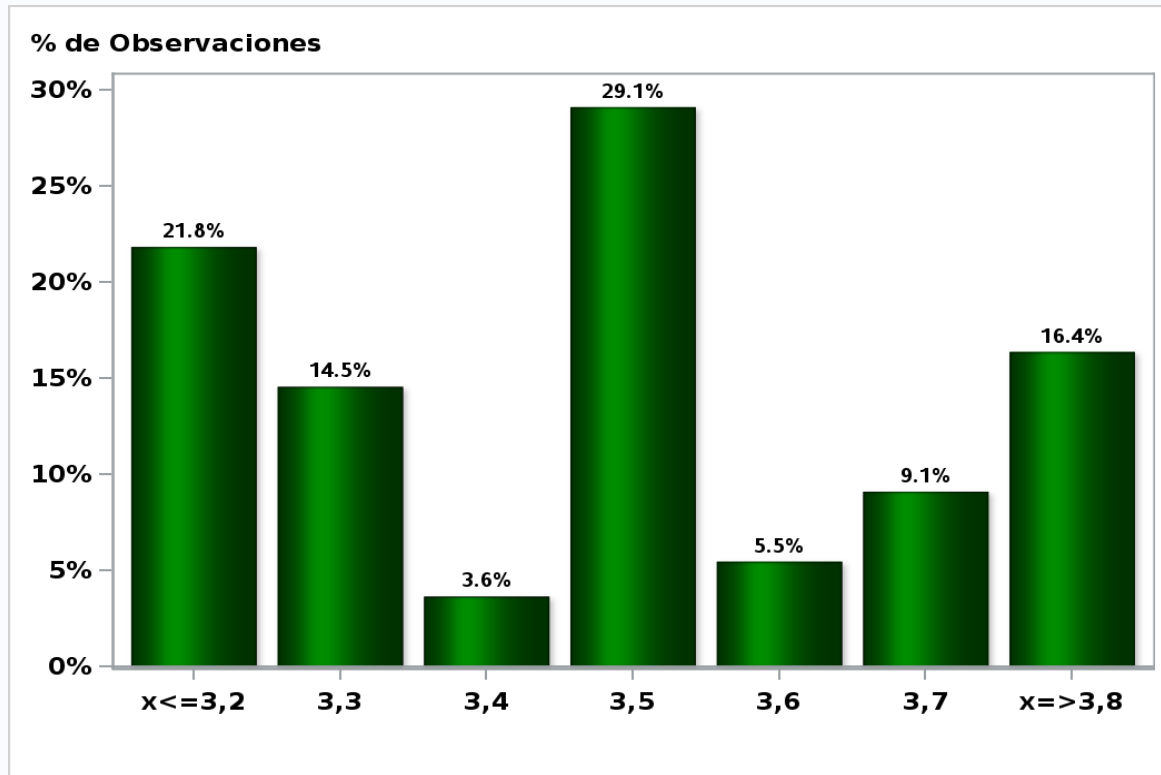
**Answers: 56 Median: 3,5%**



[Click to view summary table](#)

**Monthly Survey On Expectations November 2018**  
**GDP year 2020 (12-month change)**

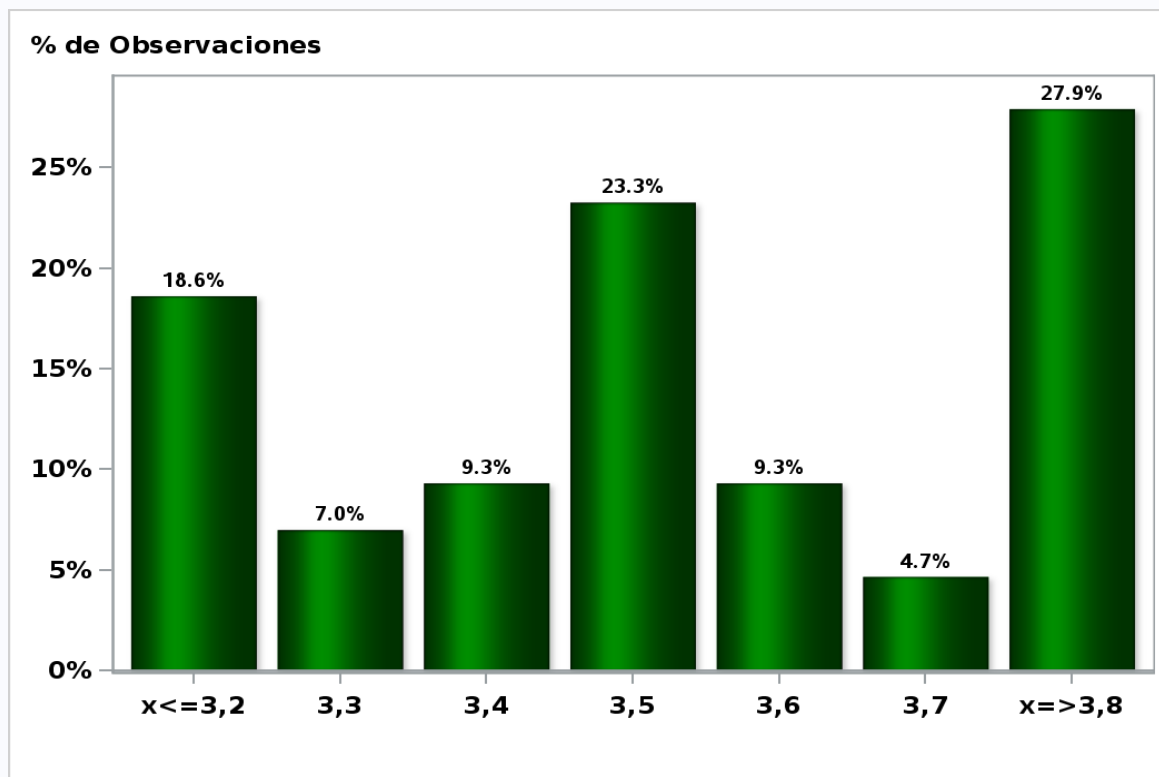
**Answers: 55 Median: 3,5%**



[Click to view summary table](#)

**Monthly Survey On Expectations November 2018**  
**GDP No Mining within calendar quarter of the survey**

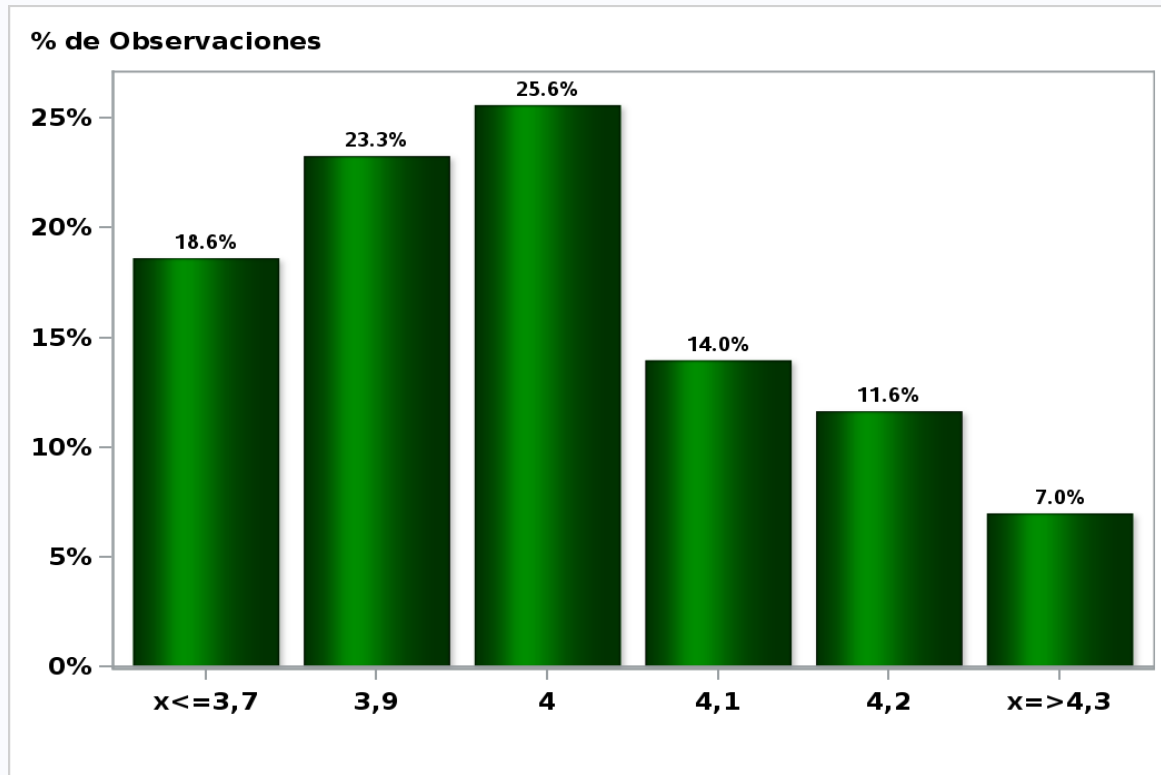
**Answers: 43 Median: 3,5%**



[Click to view summary table](#)

**Monthly Survey On Expectations November 2018**  
**GDP No Mining year 2018 (12-month change)**

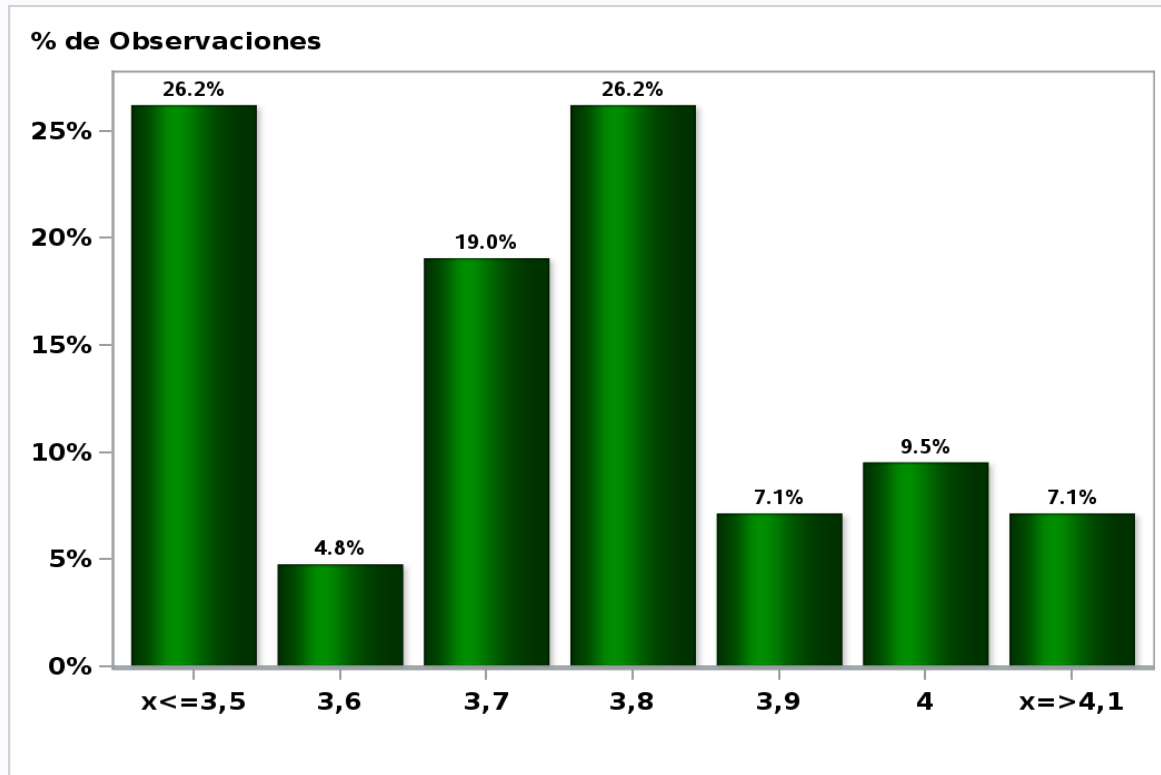
**Answers: 43 Median: 4%**



[Click to view summary table](#)

**Monthly Survey On Expectations November 2018**  
**GDP No Mining year 2019 (12-month change)**

**Answers: 42 Median: 3,8%**

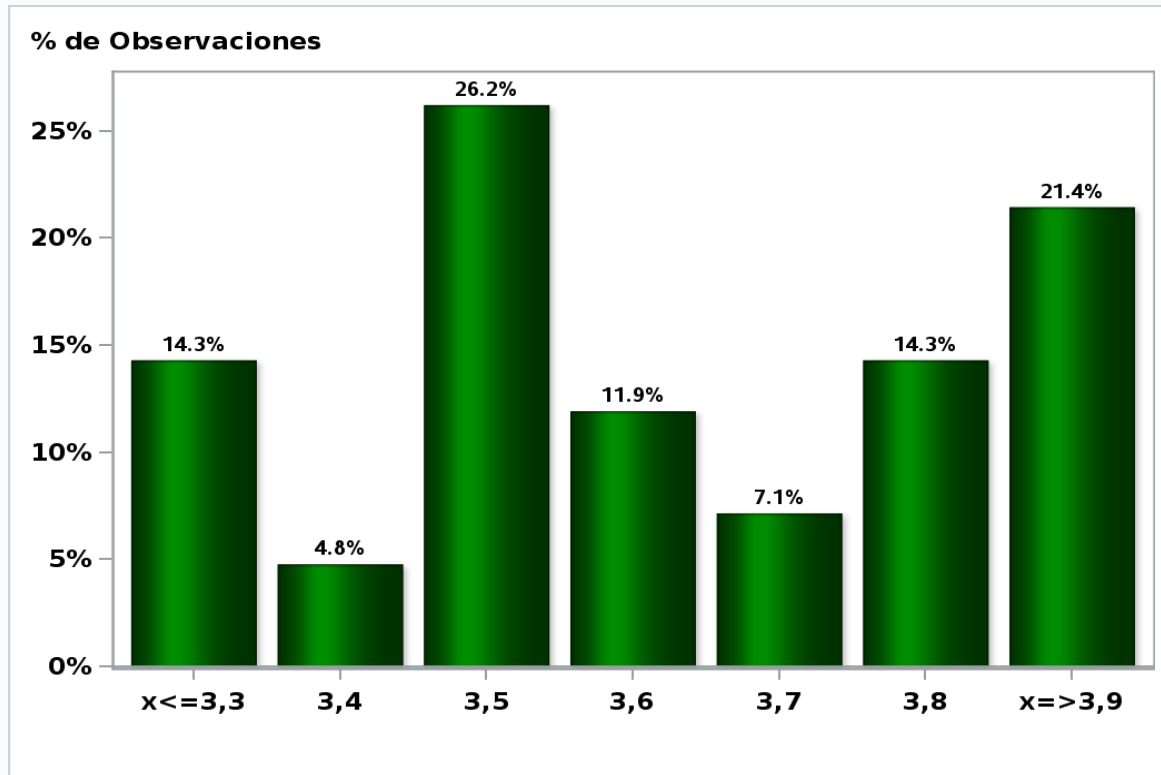


[Click to view summary table](#)



**Monthly Survey On Expectations November 2018**  
**GDP No Mining year 2020 (12-month change)**

**Answers: 42 Median: 3,6%**



[Click to view summary table](#)