

## MONTHLY SURVEY ON EXPECTATIONS June 2019

Sent on: 4 June 2019

Deadline for responses: 10 June 2019

Variable	Median	Decile 1	Decile 9	Answers	Graph
<b>1.Inflation (% change)</b>					
Current month (monthly change)	0.20	0.00	0.30	50	<a href="#">Graph1</a>
Next month (monthly change)	0.30	0.20	0.40	50	<a href="#">Graph2</a>
In eleven months (12-month change)	2.90	2.50	3.00	49	<a href="#">Graph3</a>
In twenty three months (12-month change)	3.00	2.90	3.00	49	<a href="#">Graph4</a>
December 2019 (12-month change)	2.80	2.60	3.00	49	<a href="#">Graph5</a>
December 2020 (12-month change)	3.00	2.80	3.00	49	<a href="#">Graph6</a>
<b>2.Monetary Policy rate target (%) (*)</b>					
Following meeting	2.50	2.50	3.00	48	<a href="#">Graph7</a>
Second following meeting	2.50	2.25	3.00	48	<a href="#">Graph8</a>
In five months	2.50	2.25	3.00	49	<a href="#">Graph9</a>
December 2019	2.50	2.00	3.00	49	<a href="#">Graph10</a>
In eleven months	2.50	2.00	3.00	48	<a href="#">Graph11</a>
In seventeen months	2.75	2.00	3.25	48	<a href="#">Graph12</a>
In twenty three months	3.00	2.25	3.50	48	<a href="#">Graph13</a>
<b>3.5-Year BCU (%) (*)</b>					
In two months	0.60	0.20	0.90	45	<a href="#">Graph14</a>
In eleven months	0.90	0.40	1.10	44	<a href="#">Graph15</a>
In twenty three months forward	1.00	0.50	1.30	44	<a href="#">Graph16</a>
<b>4.5-Year BCP (%) (*)</b>					
In two months	3.50	3.00	3.80	45	<a href="#">Graph17</a>
In eleven months	3.80	3.20	4.00	44	<a href="#">Graph18</a>
In twenty three months forward	4.00	3.40	4.20	44	<a href="#">Graph19</a>
<b>5.Exchange Rate (CH \$ per US\$ 1) (*)</b>					
In two months	690	670	700	49	<a href="#">Graph20</a>
In eleven months	675	650	695	49	<a href="#">Graph21</a>
In twenty three months forward	665	635	690	46	<a href="#">Graph22</a>
<b>6.IMACEC (Monthly Activity Index)</b>					
One month ago	2.40	2.00	2.70	48	<a href="#">Graph23</a>
<b>7.IMACEC No Mining (monthly activity index)</b>					
One month ago	2.40	2.00	2.90	40	<a href="#">Graph24</a>
<b>8.GDP (12-month change)</b>					
EWithin calendar quarter of the survey	2.50	2.00	2.80	49	<a href="#">Graph25</a>
Year 2019	2.90	2.60	3.20	50	<a href="#">Graph26</a>
Year 2020	3.30	3.00	3.70	49	<a href="#">Graph27</a>
Year 2021	3.30	3.00	3.70	45	<a href="#">Graph28</a>
<b>9.GDP No Mining (12-month change)</b>					
Within calendar quarter of the survey	2.50	2.10	3.00	40	<a href="#">Graph29</a>
Year 2019	3.00	2.60	3.30	40	<a href="#">Graph30</a>
Year 2020	3.40	3.00	3.70	40	<a href="#">Graph31</a>
Year 2021	3.30	2.90	3.80	38	<a href="#">Graph32</a>

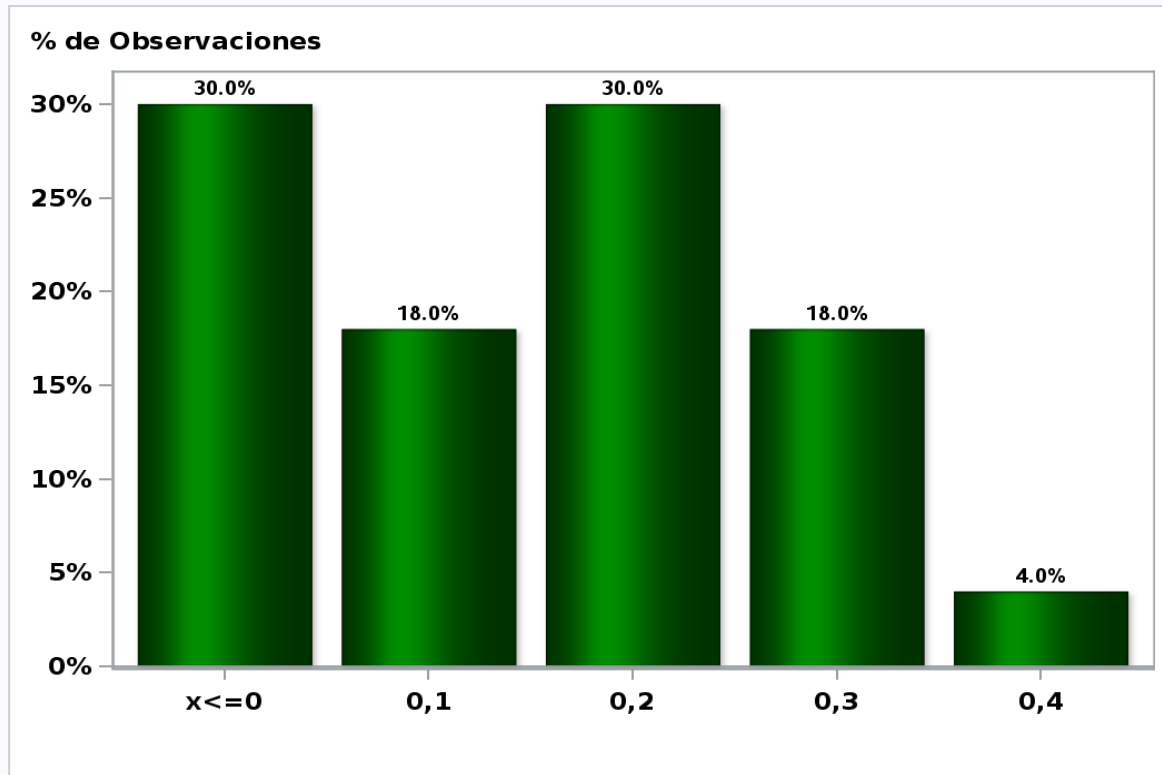
(\*) End of the month.

Monthly survey to a select group of academics, consultants and executives or advisors of financial institutions. It closes the day after knowing the IPC of the previous month, and the results are published the day after its reception, at 8:30 hrs. approximately ([www.bcentral.cl](http://www.bcentral.cl), in Section Statistics, Short-term statistics, link <http://www.bcentral.cl/es/web/guest/expectativas-economicas>). The survey period comprises the week prior to publication.

## Monthly Survey On Expectations June 2019

Inflation current month (monthly change)

**Answers: 50 Median: 0,2%**

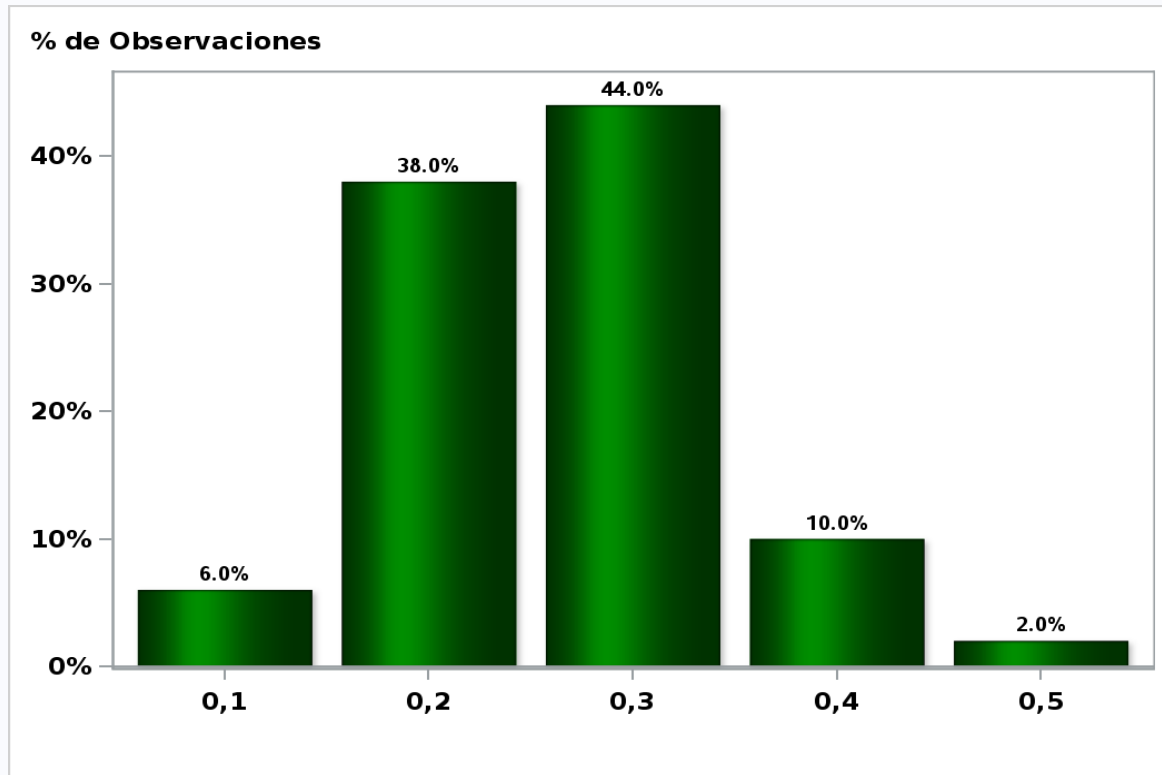


[Click to view summary table](#)

## Monthly Survey On Expectations June 2019

Inflation next month (monthly change)

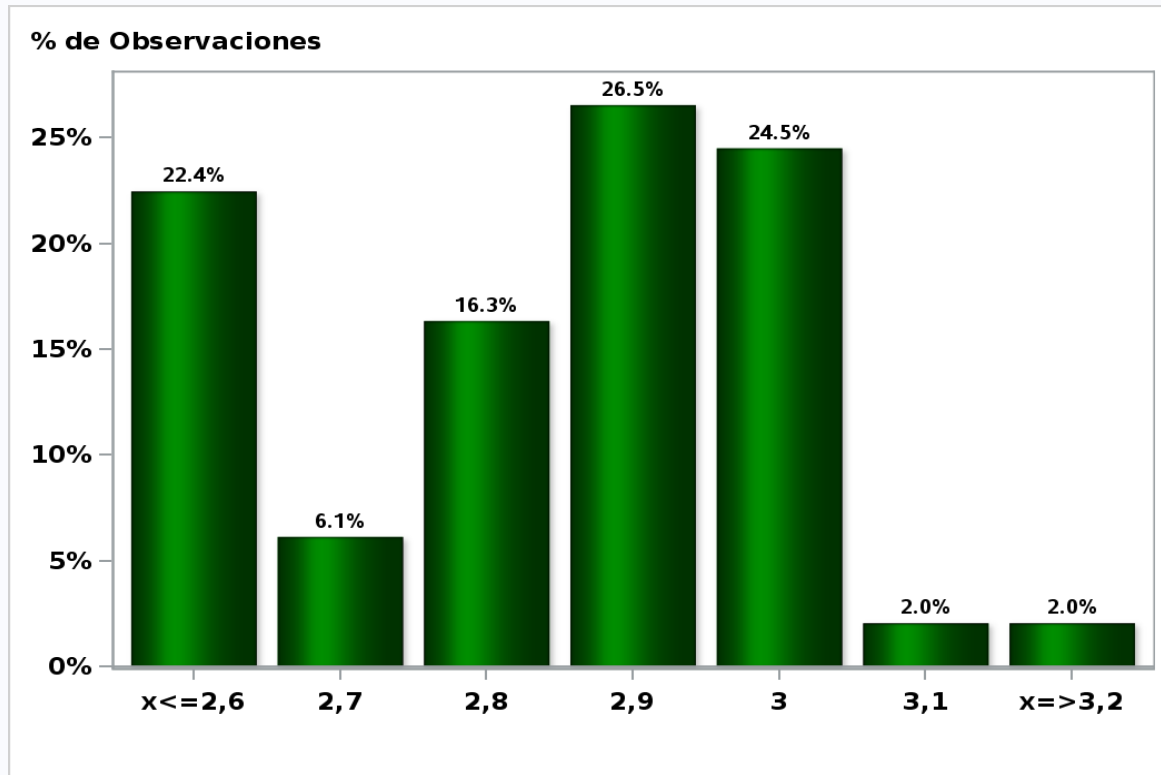
**Answers: 50 Median: 0,3%**



[Click to view summary table](#)

**Monthly Survey On Expectations June 2019**  
**Inflation in eleven months (12-month change)**

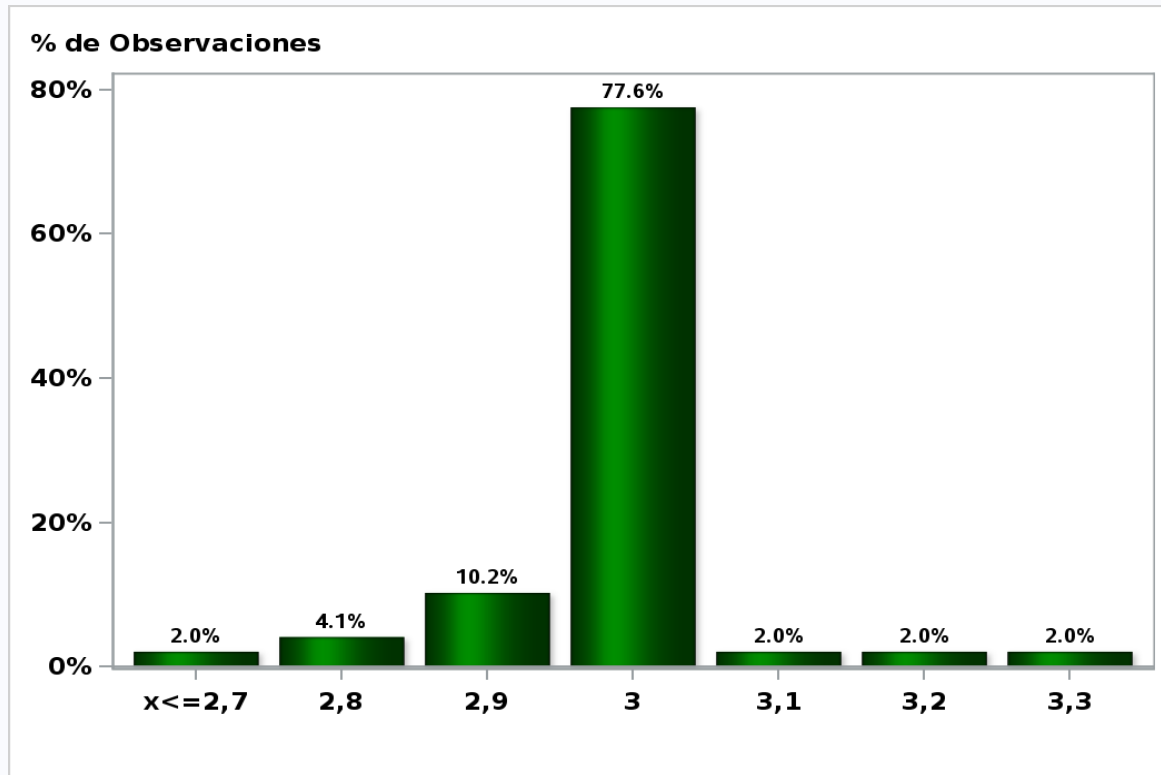
**Answers: 49 Median: 2,9%**



[Click to view summary table](#)

**Monthly Survey On Expectations June 2019**  
**Inflation in twenty three months (12-month change)**

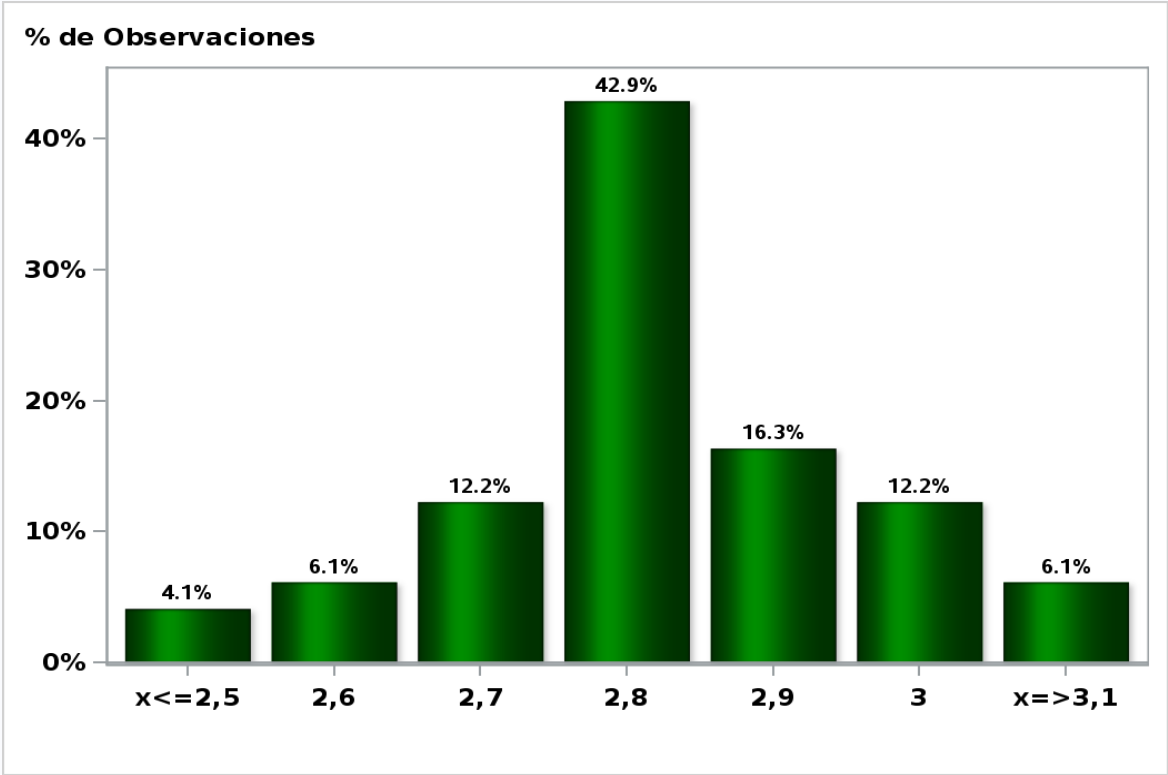
**Answers: 49 Median: 3%**



[Click to view summary table](#)

**Monthly Survey On Expectations June 2019**  
**Inflation december 2019 ( 12-month change )**

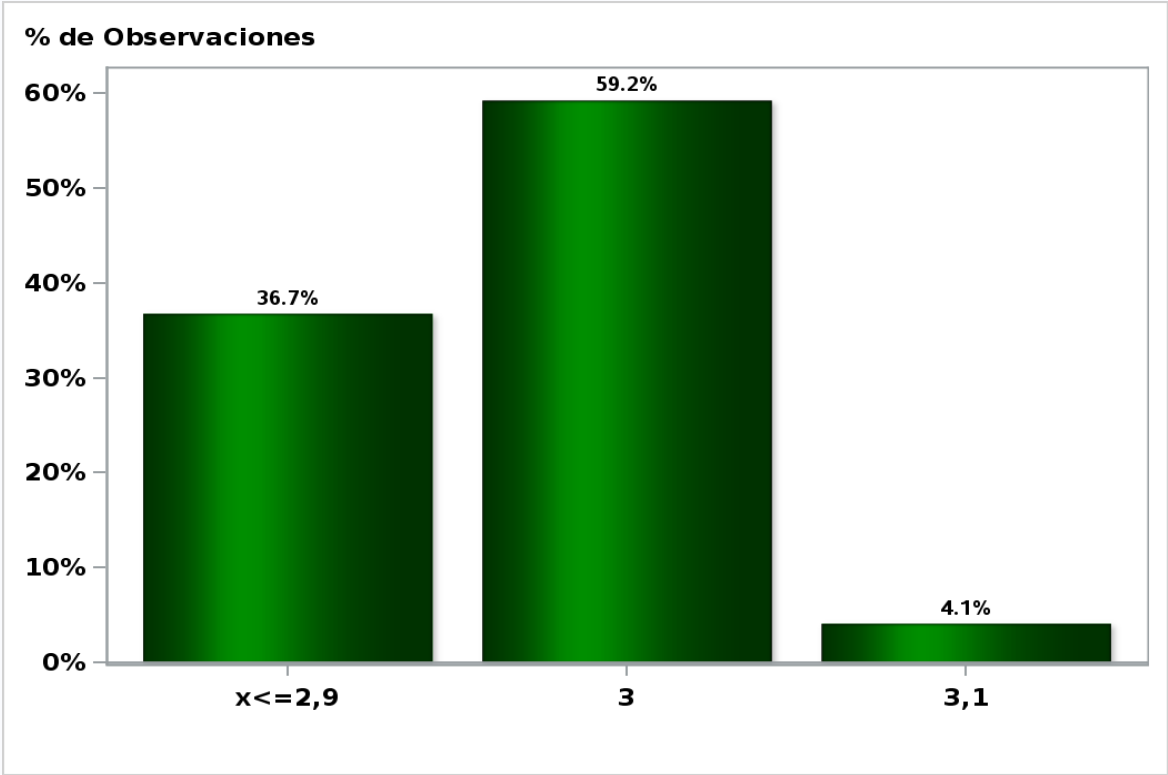
**Answers: 49 Median: 2,8%**



[Click to view summary table](#)

**Monthly Survey On Expectations June 2019  
Inflation december 2020 ( 12-month change )**

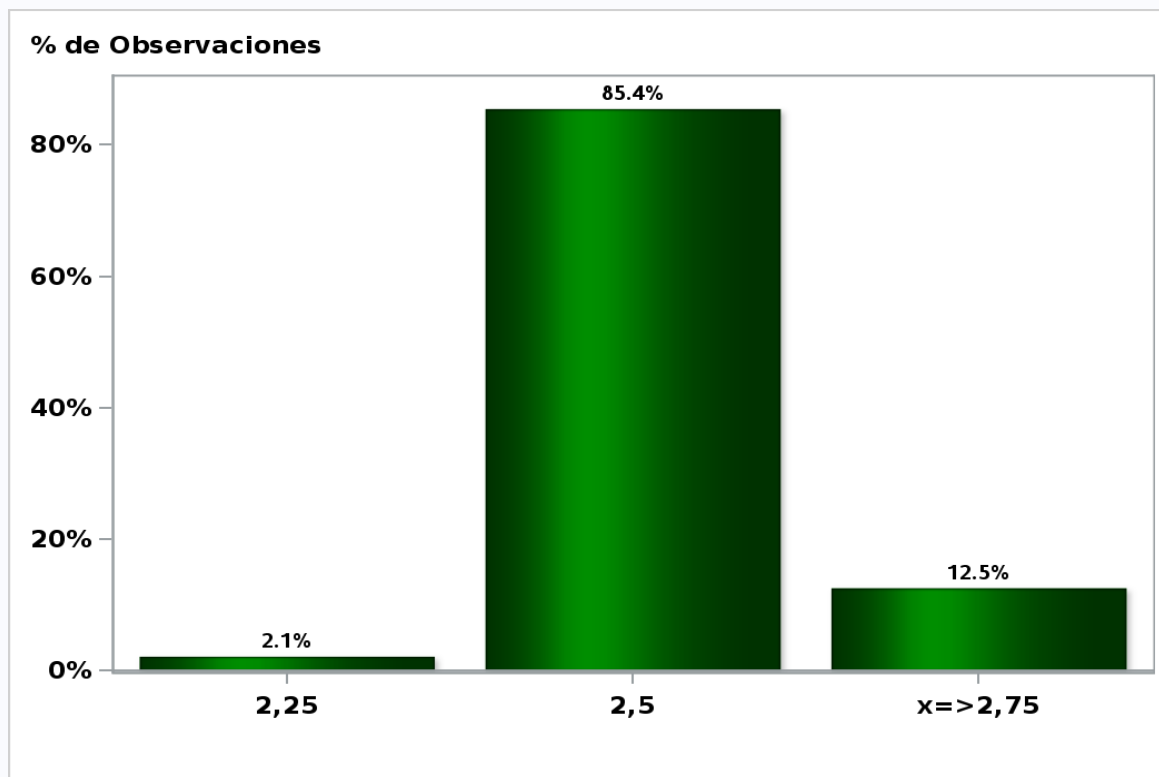
**Answers: 49 Median: 3%**



[Click to view summary table](#)

**Monthly Survey On Expectations June 2019**  
**Monetary Policy rate target following meeting**

**Answers: 48 Median: 2,5%**

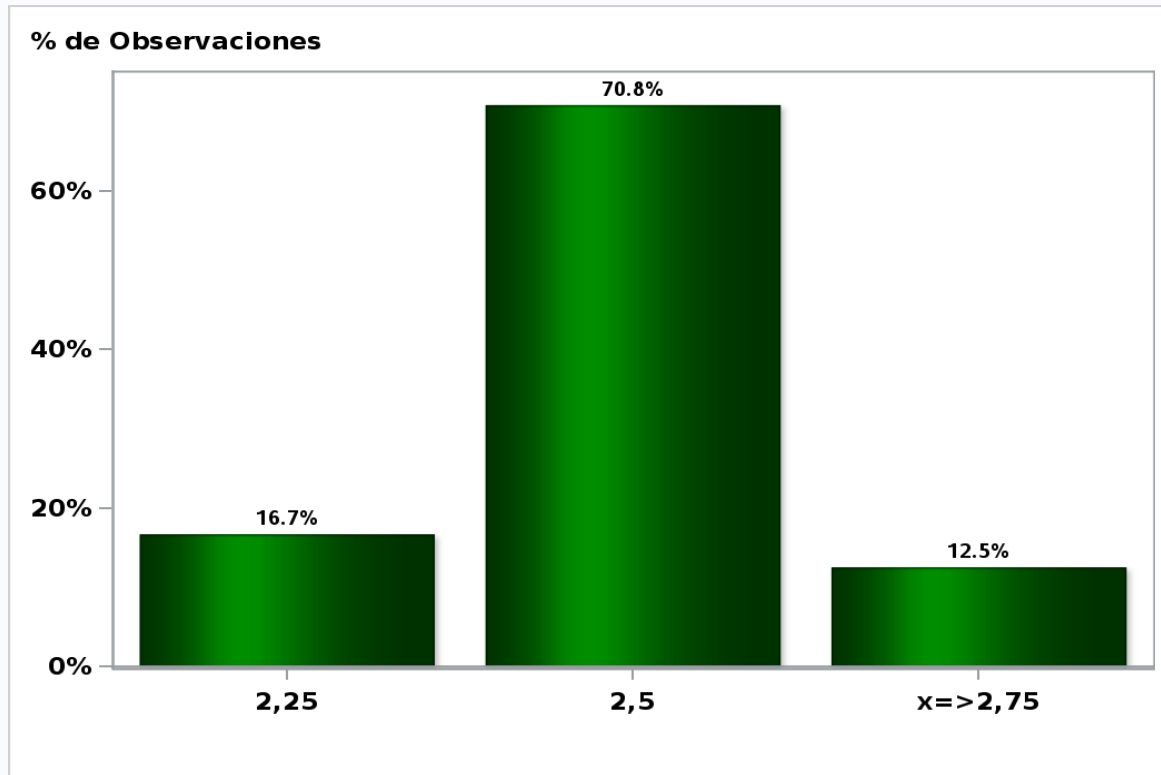


[Click to view summary table](#)



**Monthly Survey On Expectations June 2019**  
**Monetary Policy rate target second following meeting**

**Answers: 48 Median: 2,5%**

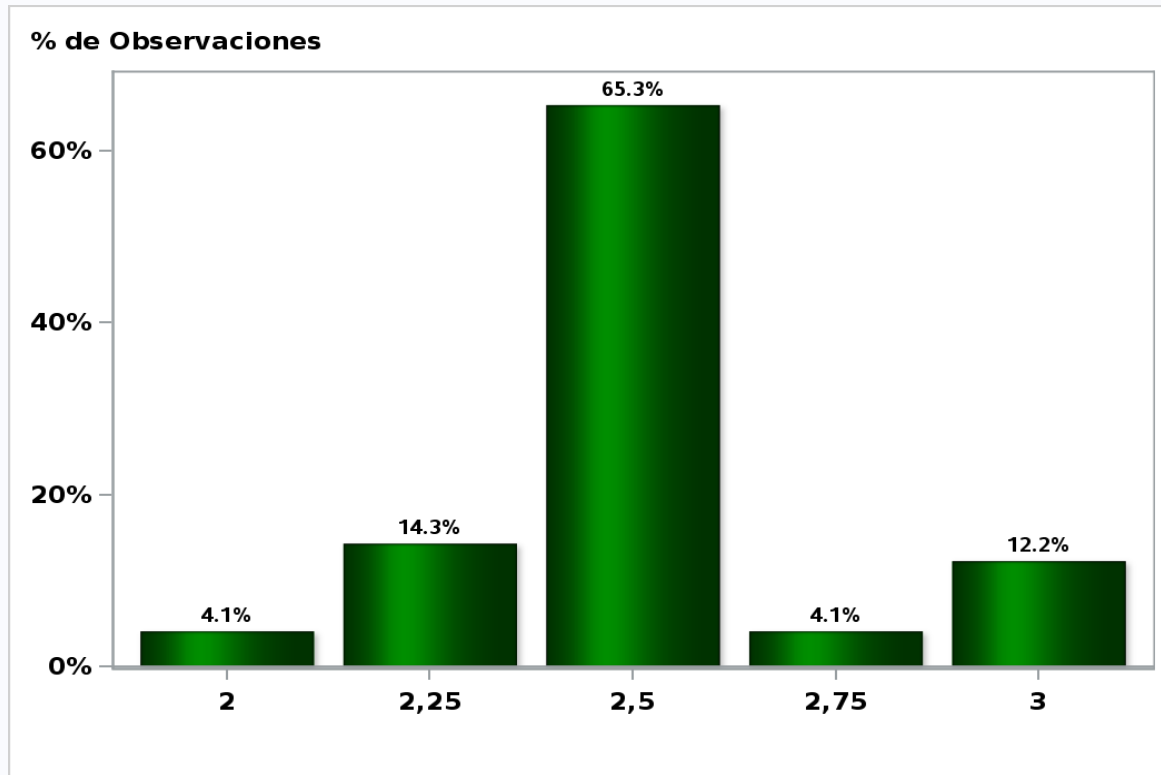


[Click to view summary table](#)

## Monthly Survey On Expectations June 2019

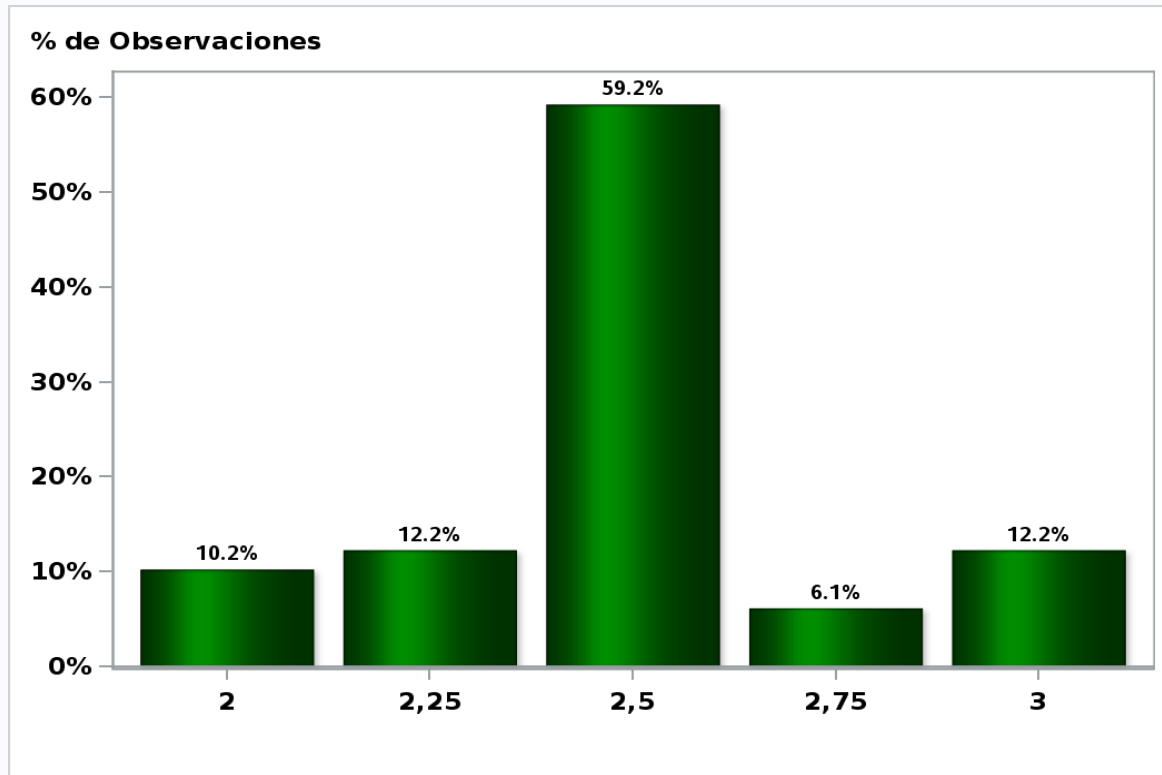
### Monetary Policy rate target In five months

Answers: 49 Median: 2,5%



[Click to view summary table](#)

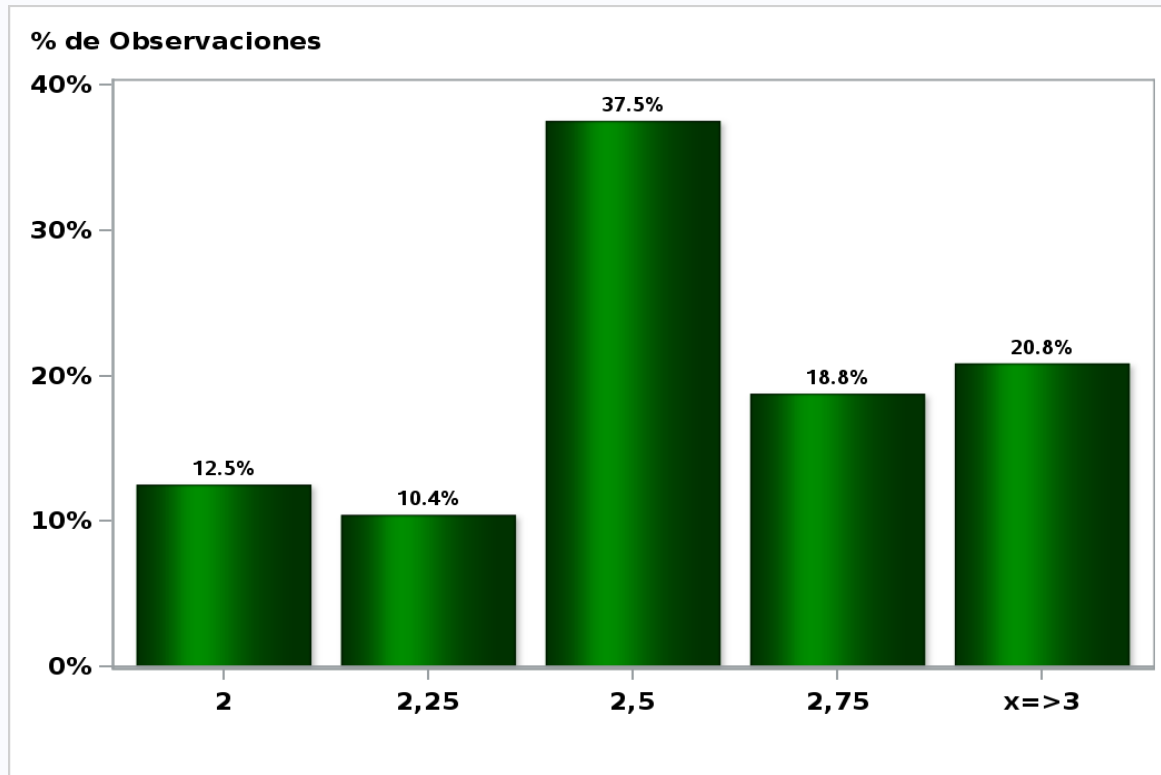
**Monthly Survey On Expectations June 2019**  
**Monetary Policy rate target december 2019**  
**Answers: 49 Median: 2,5%**



[Click to view summary table](#)

**Monthly Survey On Expectations June 2019**  
**Monetary Policy rate target in eleven months**

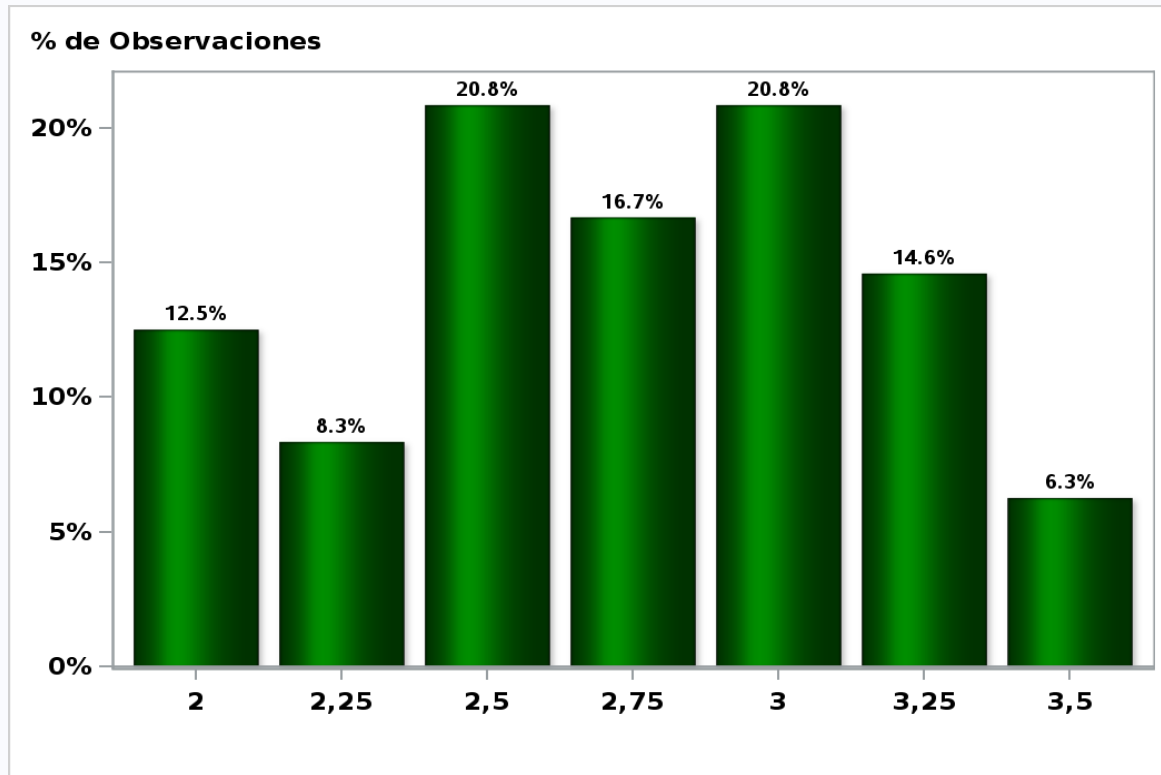
**Answers: 48 Median: 2,5%**



[Click to view summary table](#)

**Monthly Survey On Expectations June 2019**  
**Monetary Policy rate target in seventeen months**

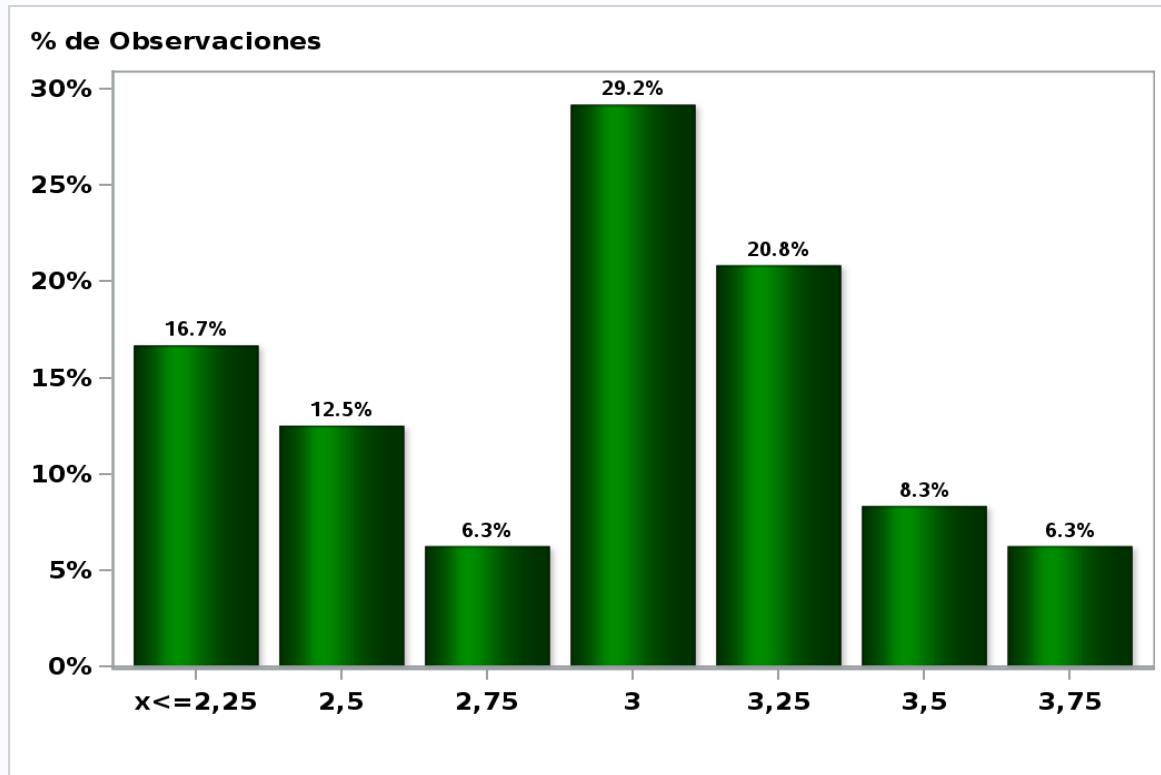
**Answers: 48 Median: 2,75%**



[Click to view summary table](#)

**Monthly Survey On Expectations June 2019**  
**Monetary Policy rate target in twenty three months**

**Answers: 48 Median: 3%**

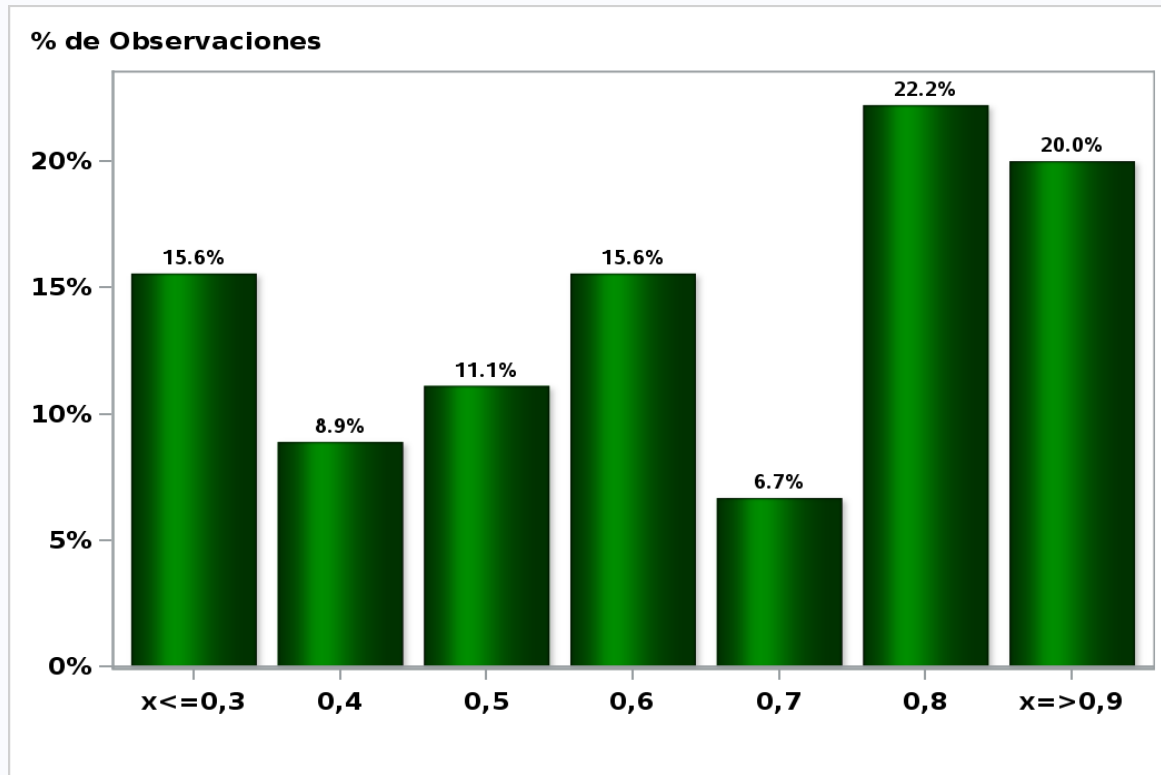


[Click to view summary table](#)

## Monthly Survey On Expectations June 2019

5-Year BCU In two months

Answers: 45 Median: 0,6%

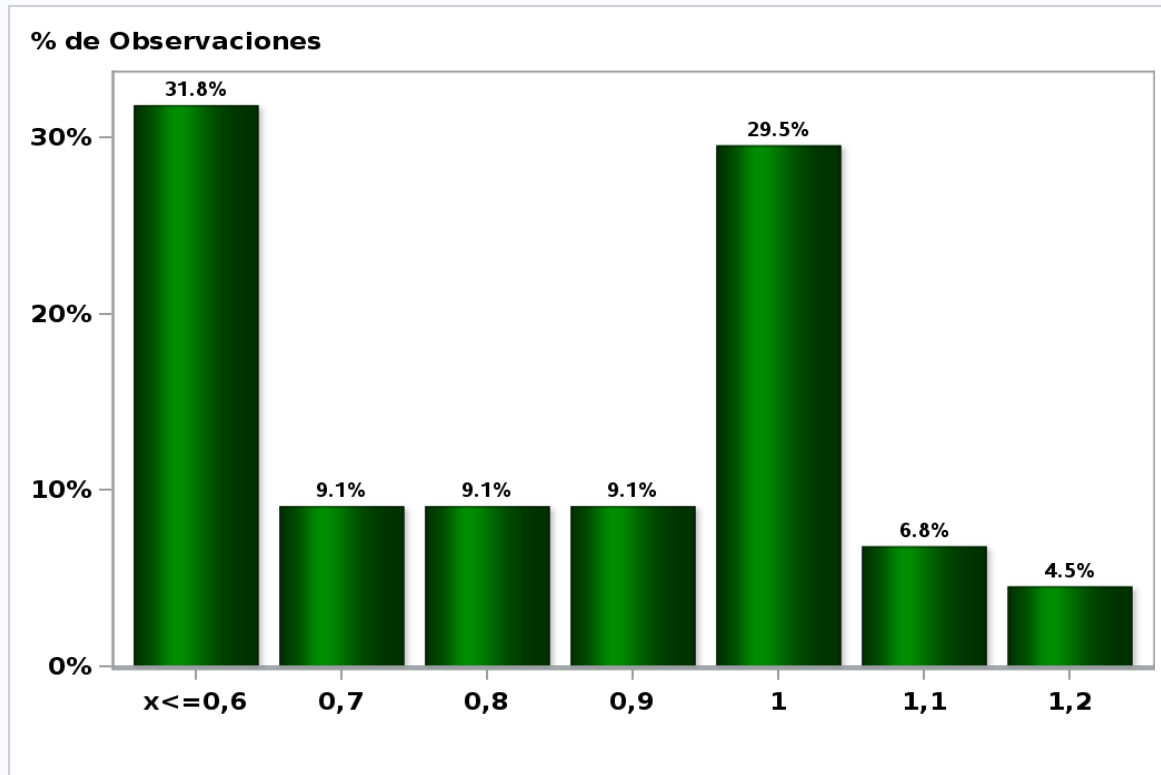


[Click to view summary table](#)

## Monthly Survey On Expectations June 2019

5-Year BCU in eleven months

Answers: 44 Median: 0,9%

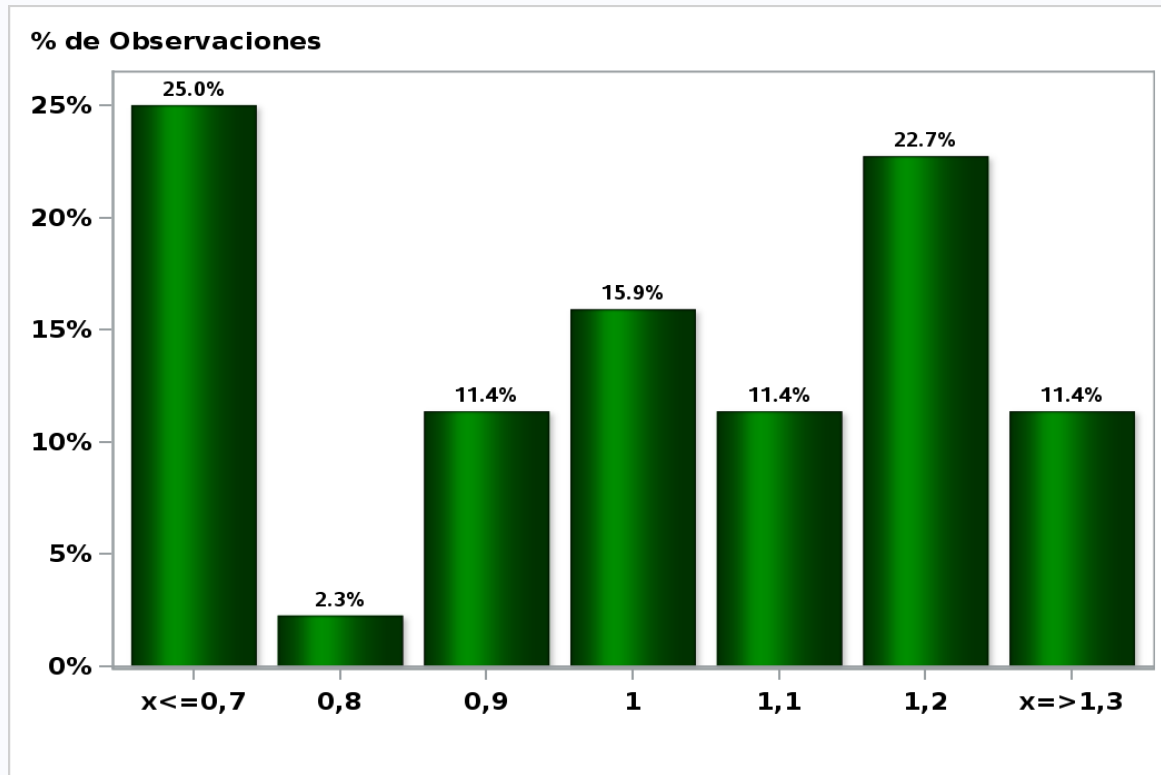


[Click to view summary table](#)



**Monthly Survey On Expectations June 2019**  
**5-Year BCU in twenty three months forward**

**Answers: 44 Median: 1%**

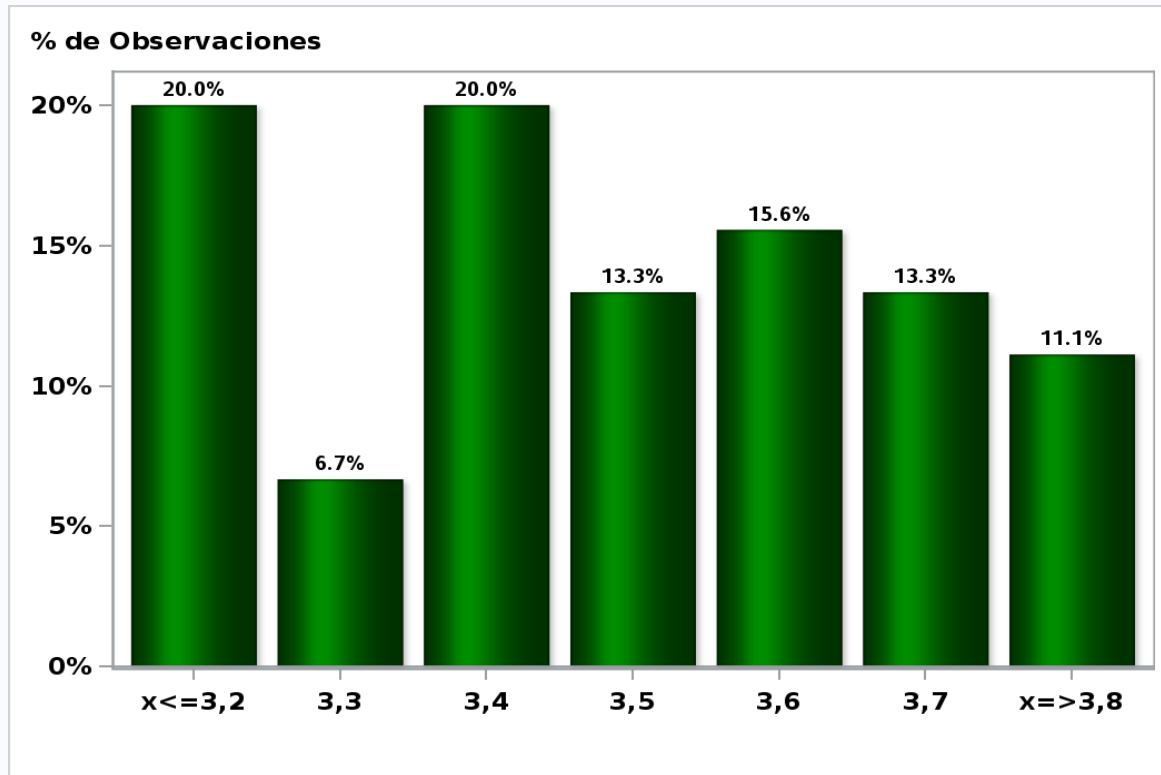


[Click to view summary table](#)

## Monthly Survey On Expectations June 2019

5-Year BCP in two months

Answers: 45 Median: 3,5%

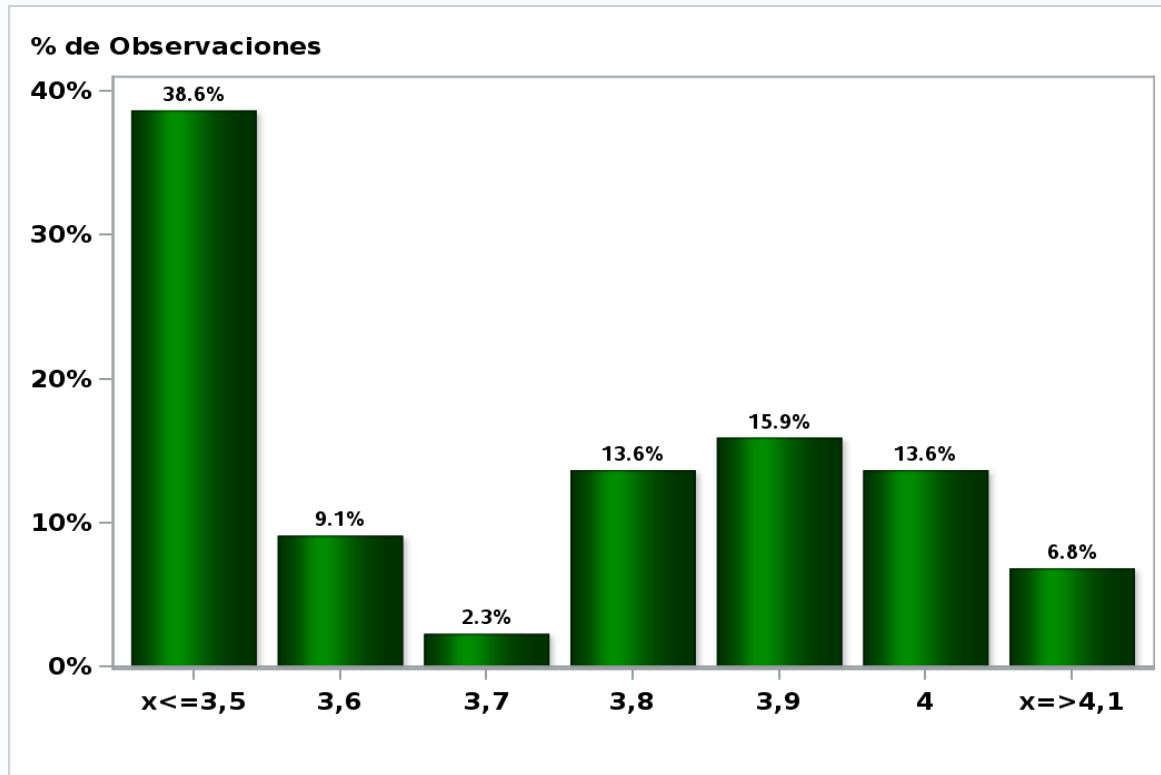


[Click to view summary table](#)

## Monthly Survey On Expectations June 2019

5-Year BCP in eleven months

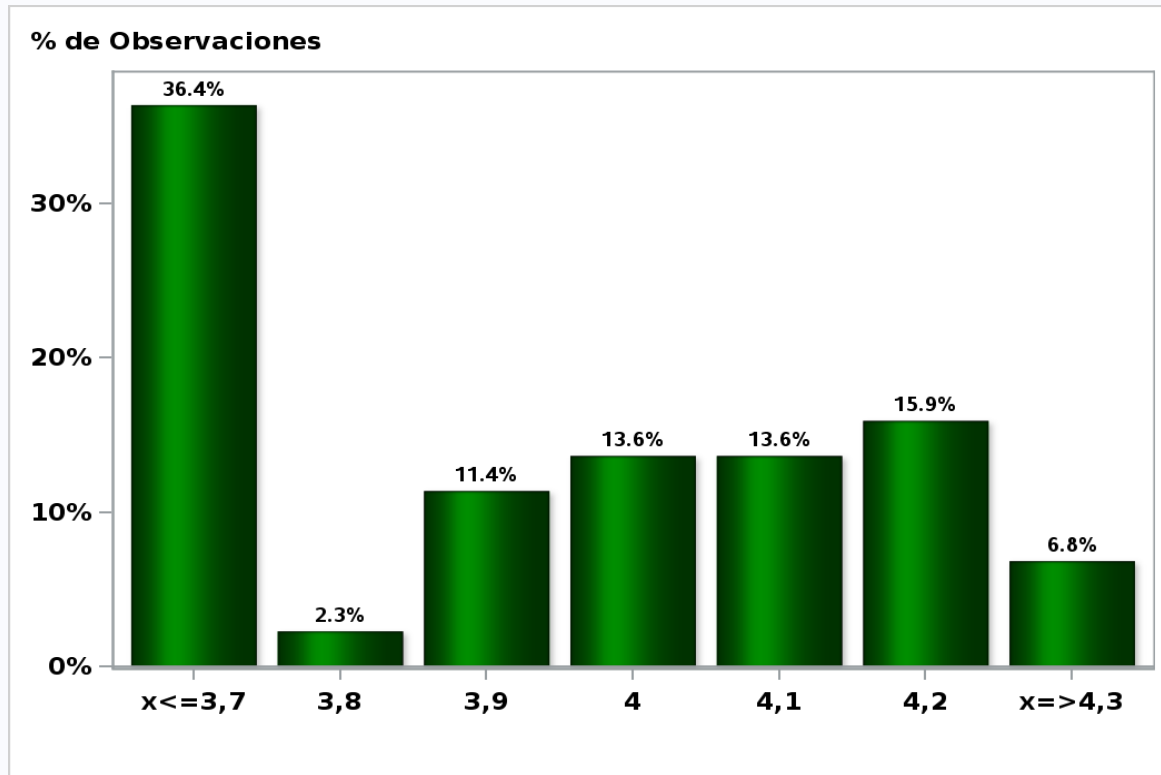
**Answers: 44 Median: 3,8%**



[Click to view summary table](#)

Monthly Survey On Expectations June 2019  
5-Year BCP in twenty three months forward

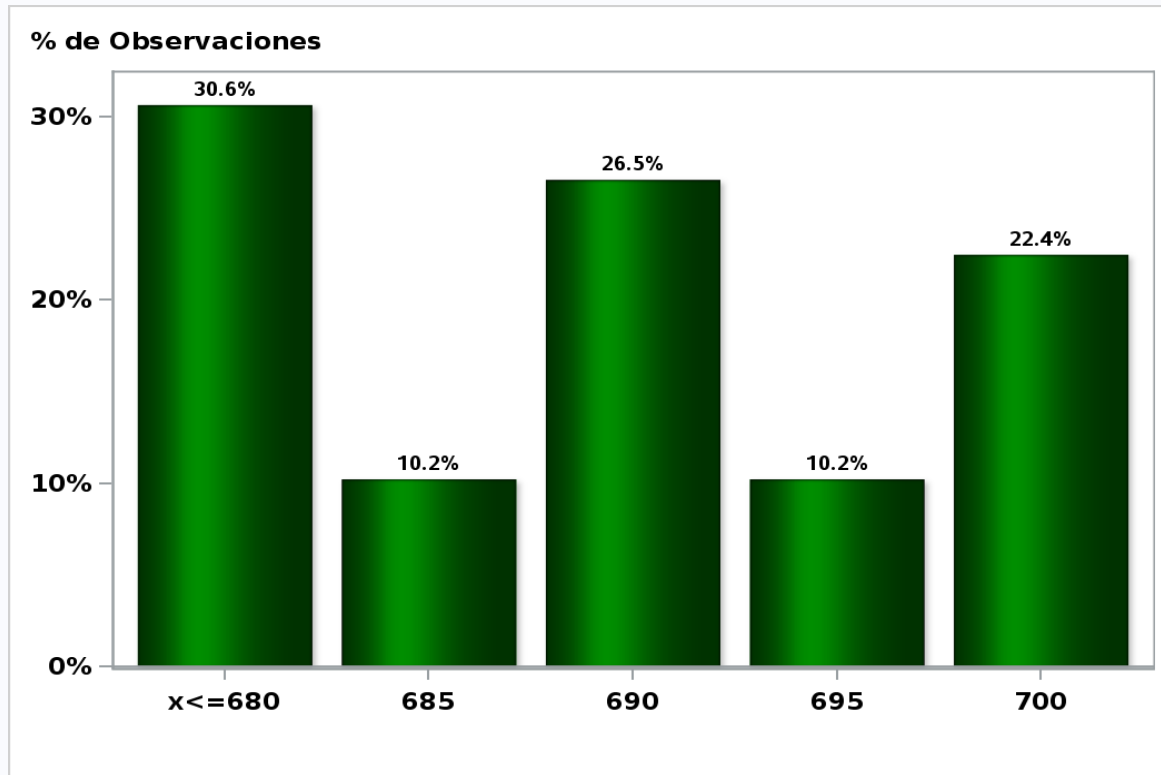
Answers: 44 Median: 4%



[Click to view summary table](#)

**Monthly Survey On Expectations June 2019**  
**Exchange Rate in two months (CH \$ per US\$)**

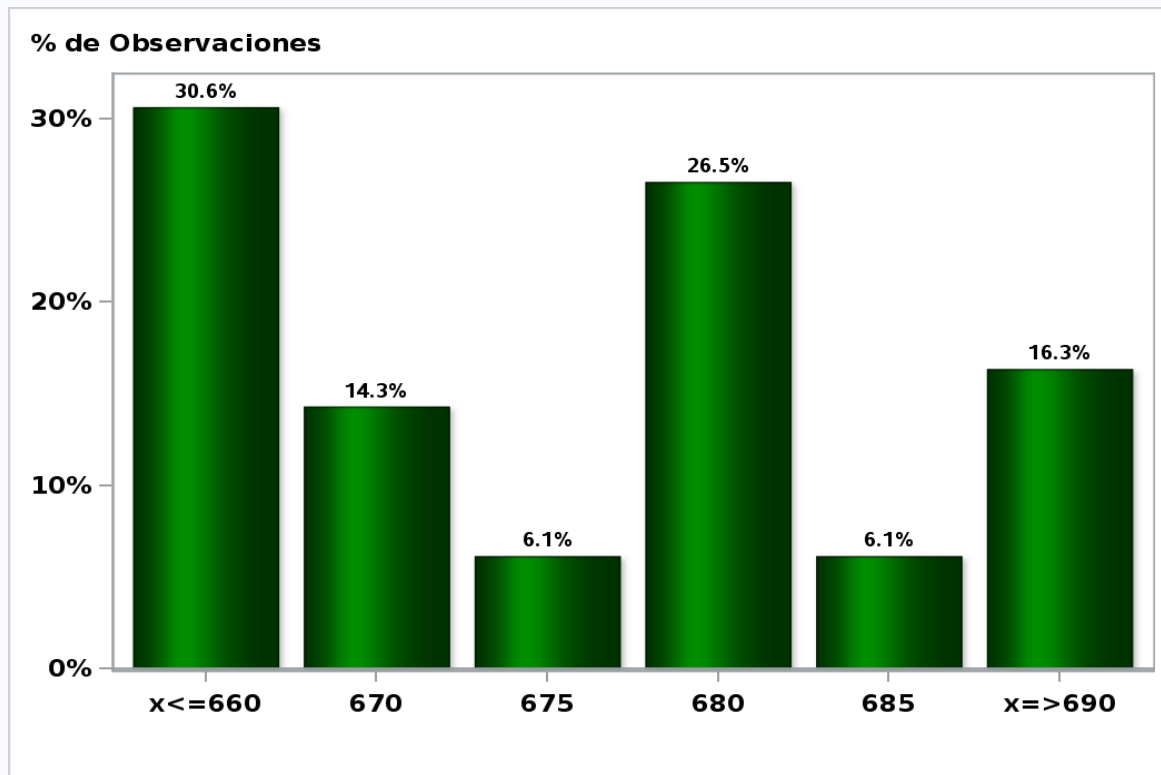
**Answers: 49 Median: \$690**



[Click to view summary table](#)

Monthly Survey On Expectations June 2019  
Exchange Rate in eleven months (CH \$ per US\$)

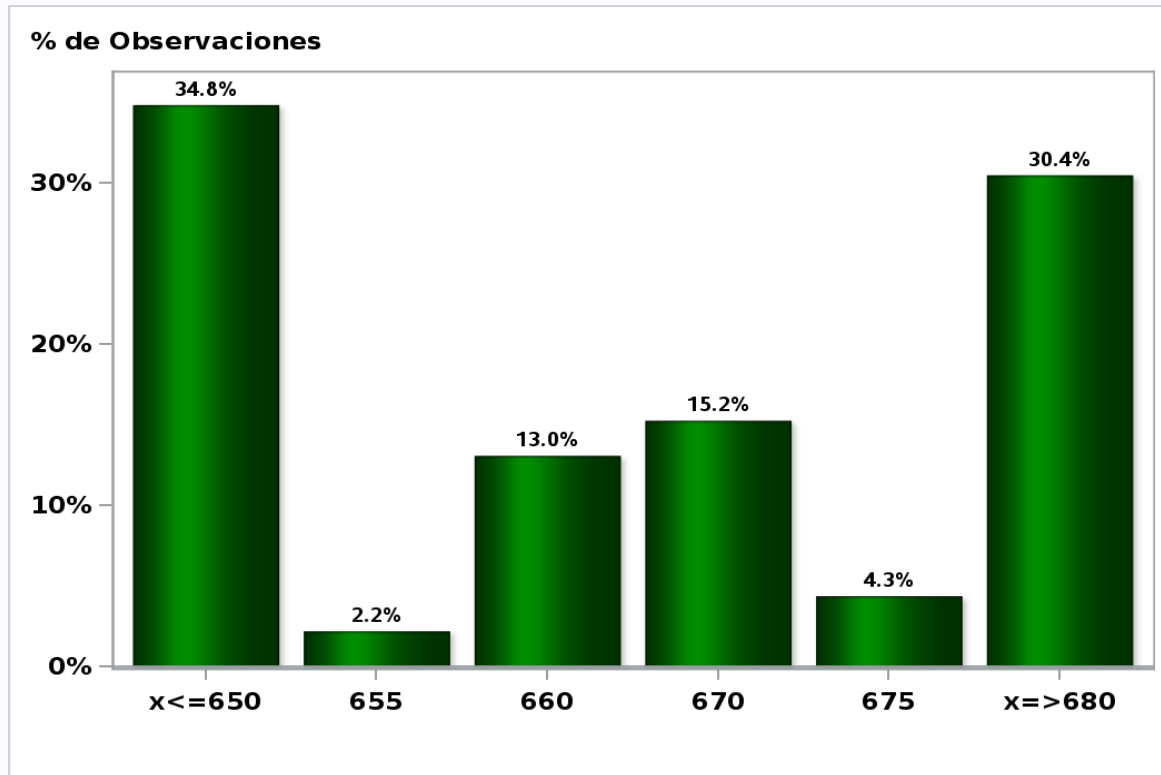
Answers: 49 Median: \$675



[Click to view summary table](#)

**Monthly Survey On Expectations June 2019**  
**Exchange Rate in twenty three months forward (CH \$ per US\$)**

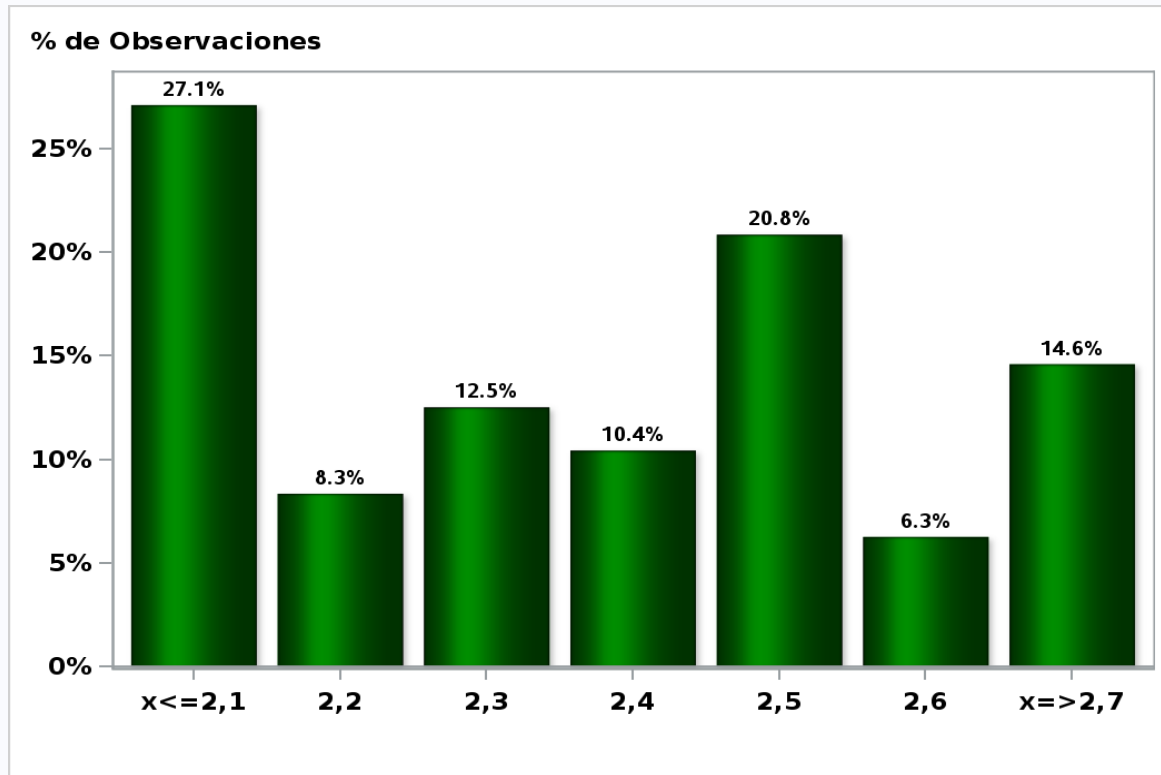
**Answers: 46 Median: \$665**



[Click to view summary table](#)

**Monthly Survey On Expectations June 2019**  
**IMACEC (Monthly Activity Index) one month ago**

**Answers: 48 Median: 2,4%**

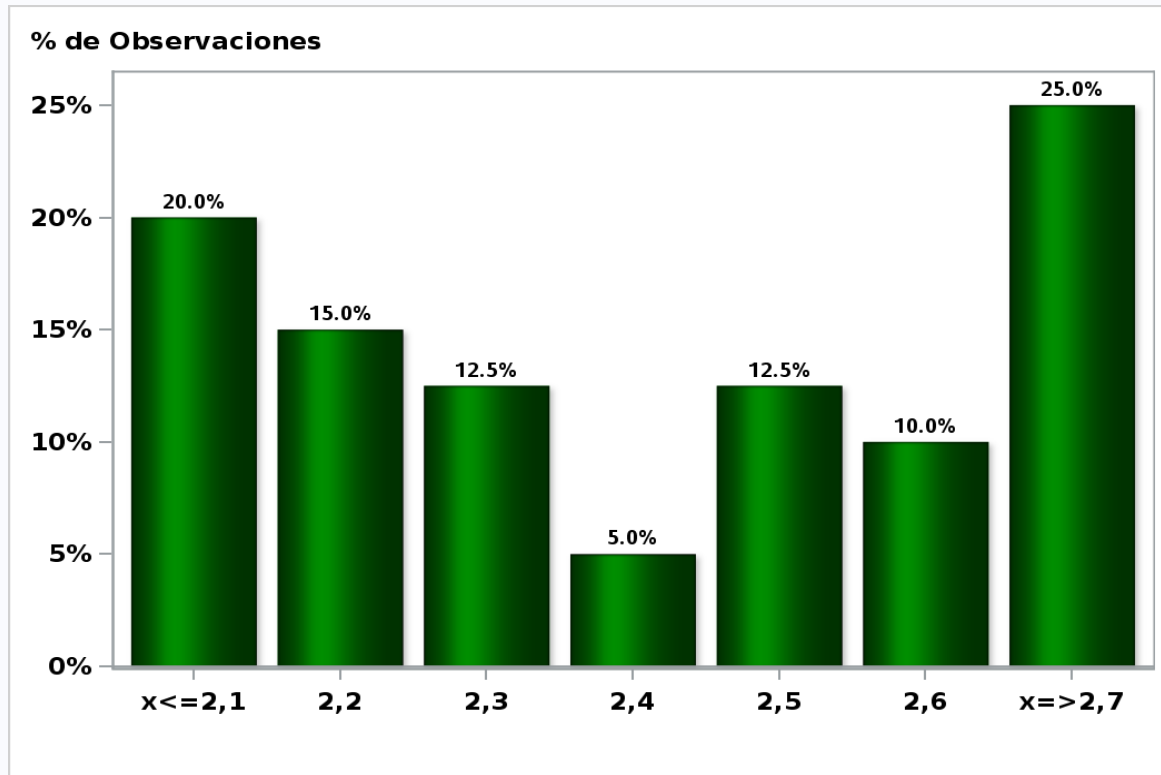


[Click to view summary table](#)



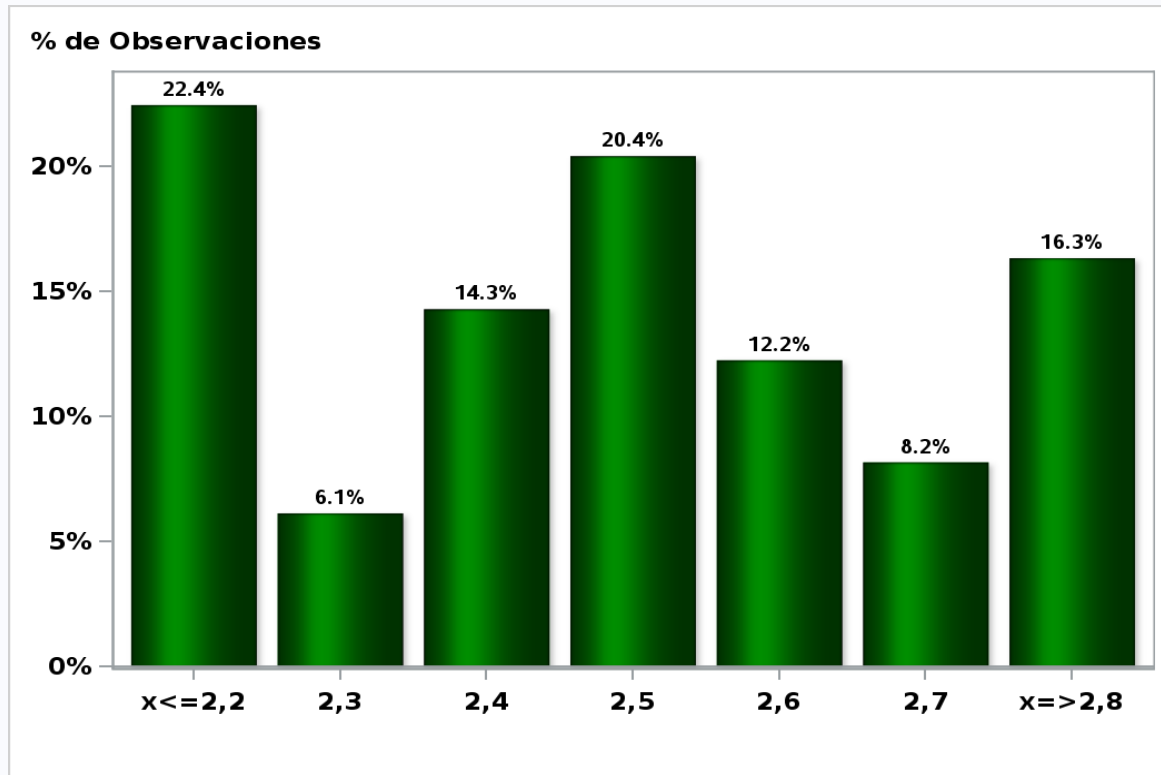
**Monthly Survey On Expectations June 2019**  
**IMACEC No Mining (Monthly Activity Index) one month ago**

**Answers: 40 Median: 2,4%**



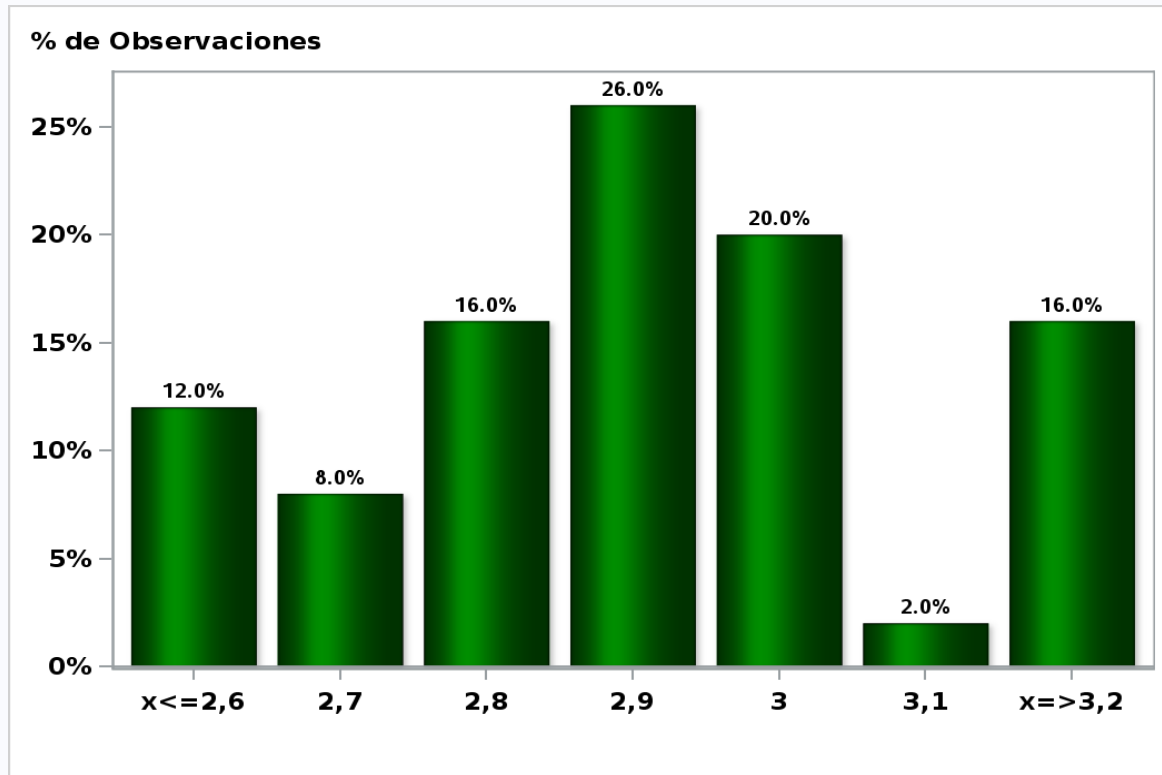
[Click to view summary table](#)

**Monthly Survey On Expectations June 2019**  
**GDP within calendar quarter of the survey**  
**Answers: 49 Median: 2,5%**



[Click to view summary table](#)

Monthly Survey On Expectations June 2019  
GDP year 2019 (12-month change)  
**Answers: 50 Median: 2,9%**

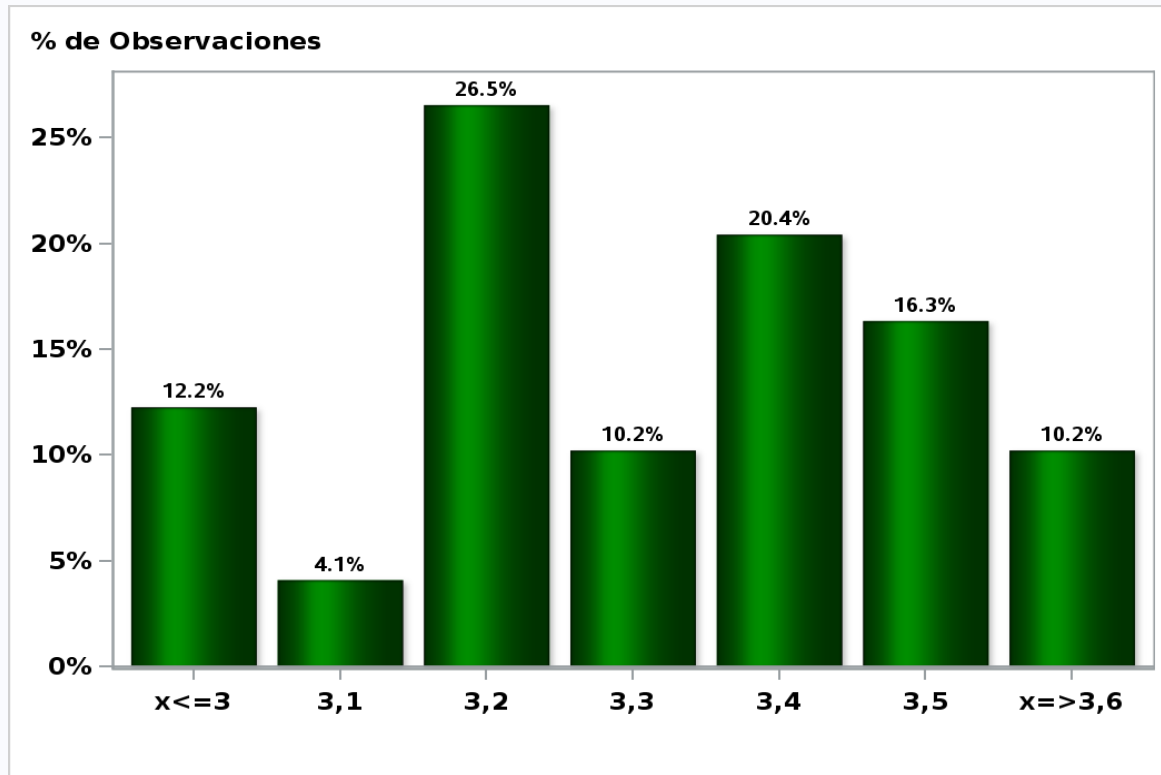


[Click to view summary table](#)

## Monthly Survey On Expectations June 2019

GDP year 2020 (12-month change)

**Answers: 49 Median: 3,3%**

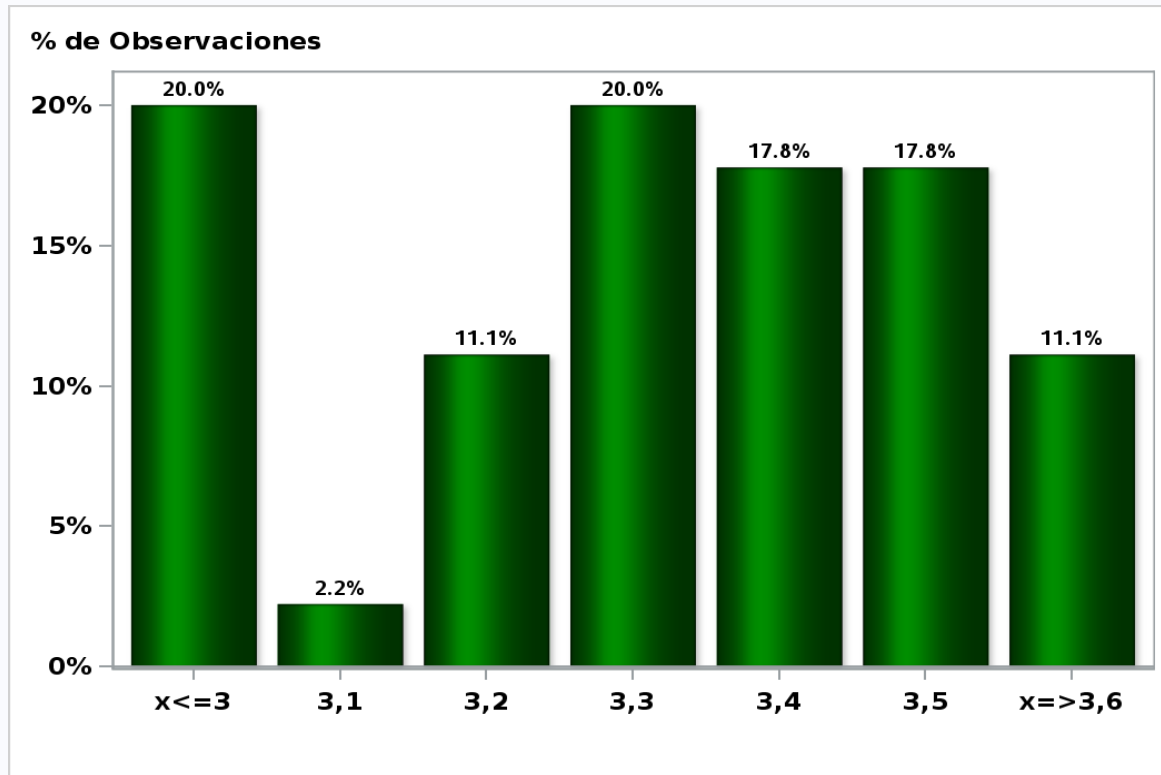


[Click to view summary table](#)

## Monthly Survey On Expectations June 2019

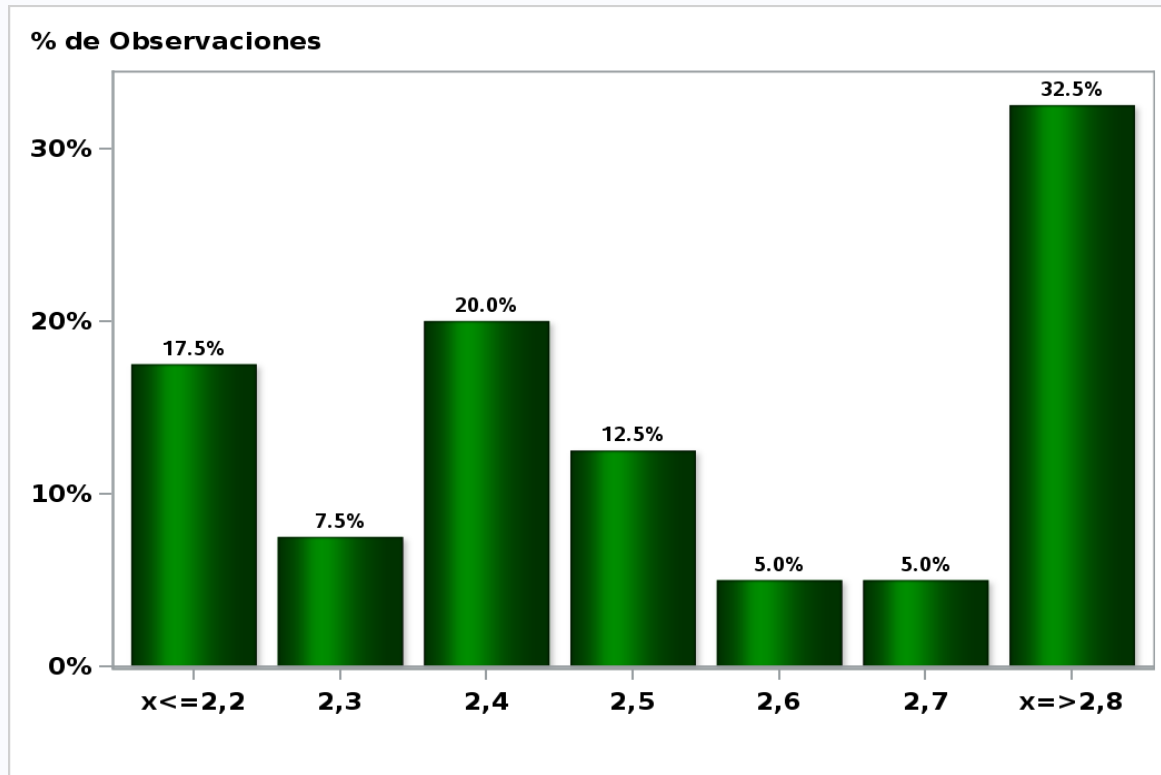
GDP year 2021 (12-month change)

**Answers: 45 Median: 3,3%**



[Click to view summary table](#)

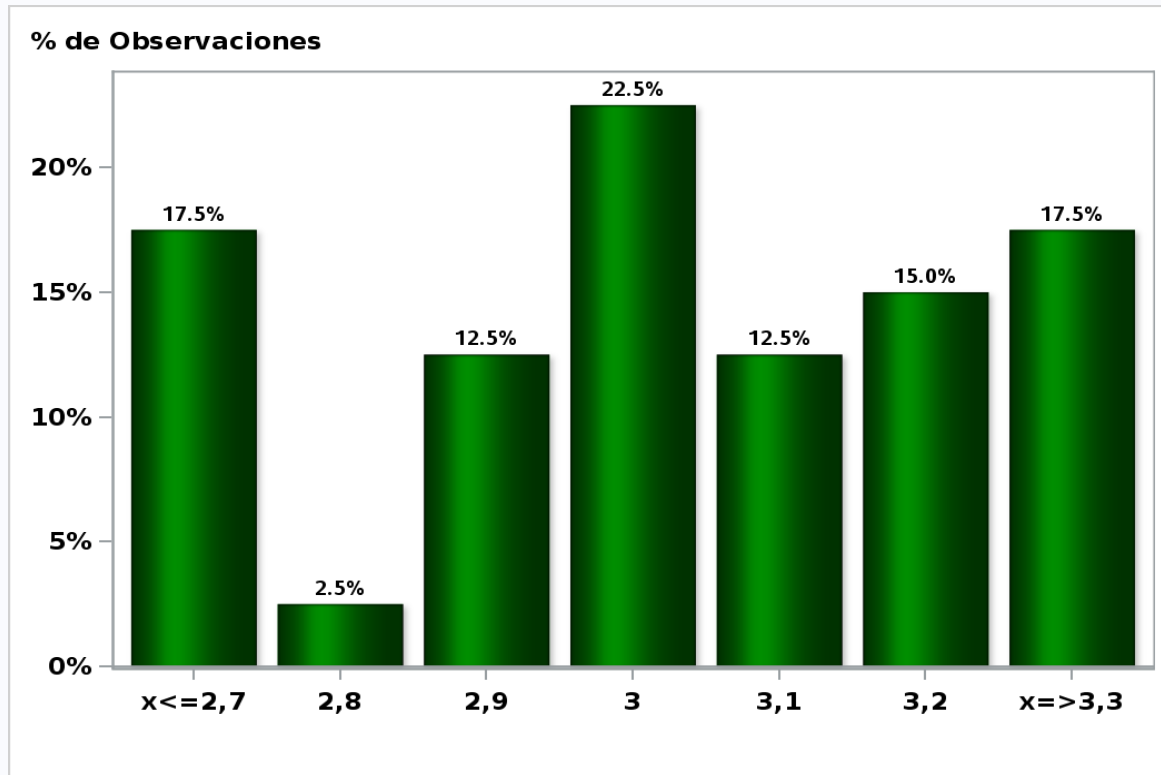
**Monthly Survey On Expectations June 2019**  
**GDP No Mining within calendar quarter of the survey**  
**Answers: 40 Median: 2,5%**



[Click to view summary table](#)

**Monthly Survey On Expectations June 2019**  
**GDP No Mining year 2019 (12-month change)**

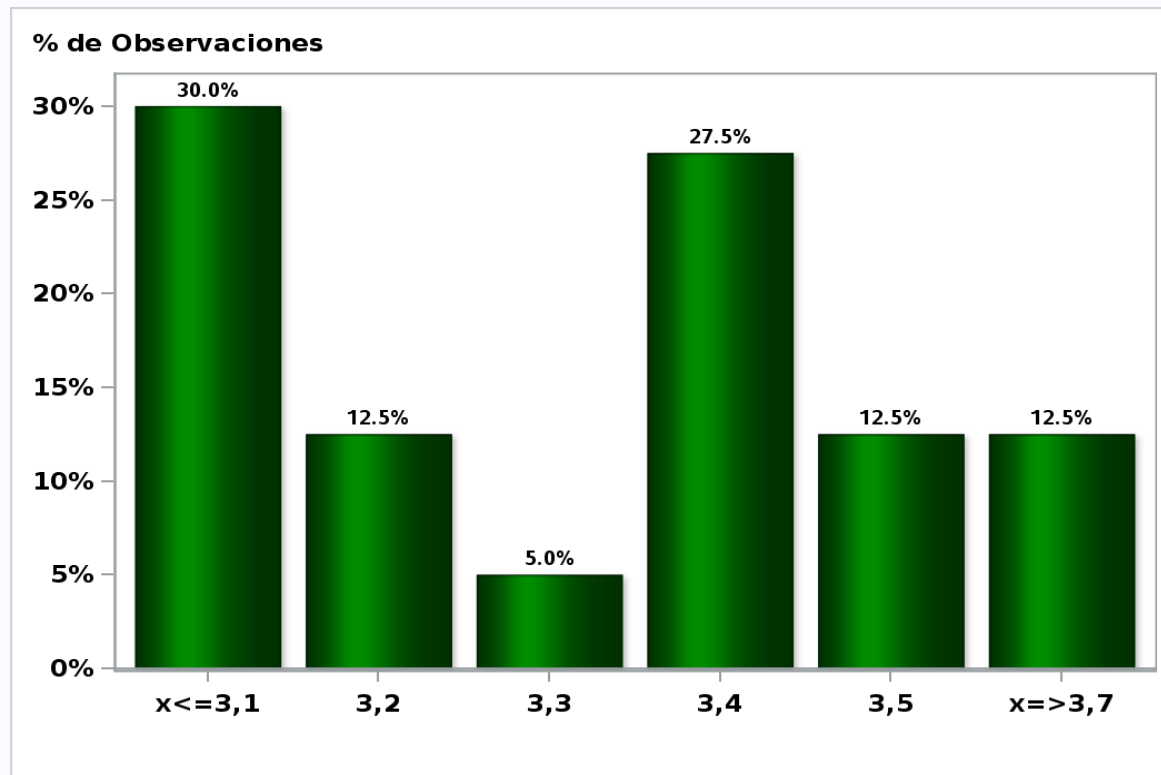
**Answers: 40 Median: 3%**



[Click to view summary table](#)

**Monthly Survey On Expectations June 2019**  
**GDP No Mining year 2020 (12-month change)**

**Answers: 40 Median: 3,4%**

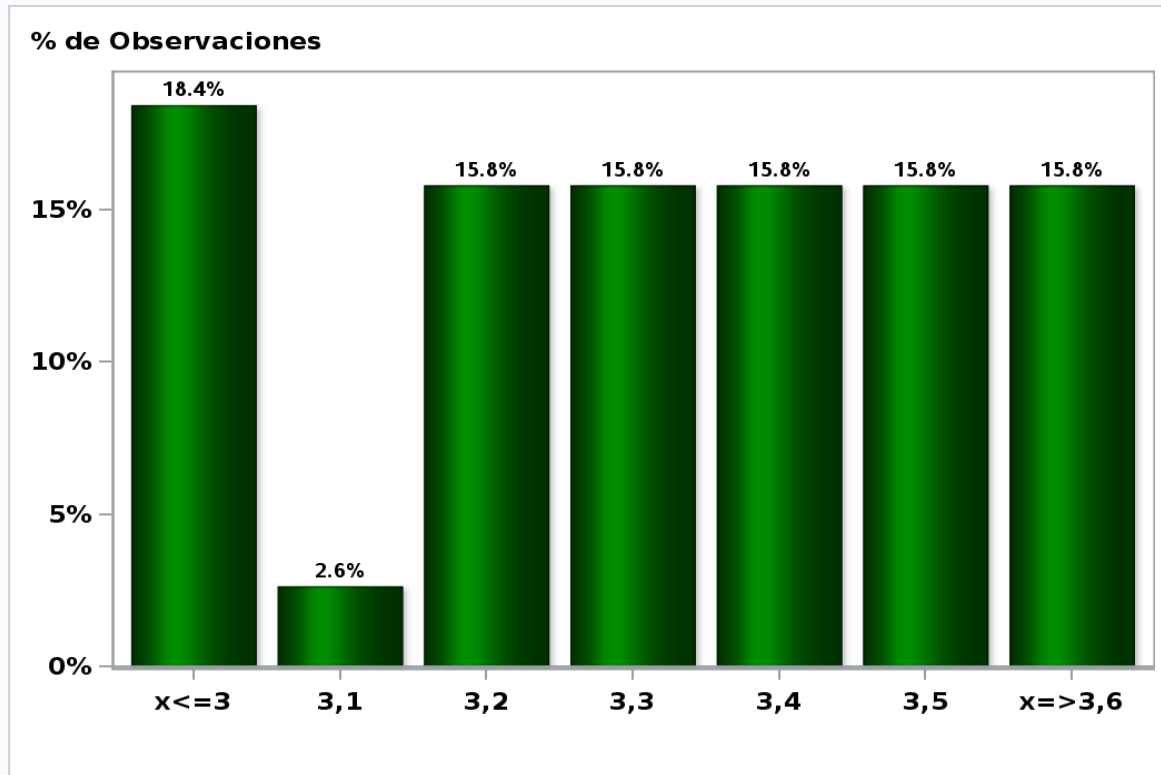


[Click to view summary table](#)



Monthly Survey On Expectations June 2019  
GDP No Mining year 2021 (12-month change)

Answers: 38 Median: 3,3%



[Click to view summary table](#)