

MONTHLY SURVEY ON EXPECTATIONS May 2019

Sent on: 3 May 2019

Deadline for responses: 9 May 2019

Variable	Median	Decile 1	Decile 9	Answers	Graph
1.Inflation (% change)					
Current month (monthly change)	0.30	0.20	0.50	55	Graph1
Next month (monthly change)	0.20	0.10	0.30	55	Graph2
In eleven months (12-month change)	2.90	2.70	3.10	54	Graph3
In twenty three months (12-month change)	3.00	2.80	3.00	53	Graph4
December 2019 (12-month change)	2.80	2.50	2.90	54	Graph5
December 2020 (12-month change)	3.00	2.80	3.00	54	Graph6
2.Monetary Policy rate target (%) (*)					
Following meeting	3.00	3.00	3.00	55	Graph7
Second following meeting	3.00	3.00	3.00	55	Graph8
In five months	3.00	3.00	3.00	55	Graph9
December 2019	3.00	3.00	3.25	54	Graph10
In eleven months	3.25	3.00	3.25	53	Graph11
In seventeen months	3.50	3.00	3.50	54	Graph12
In twenty three months	3.50	3.00	4.00	52	Graph13
3.5-Year BCU (%) (*)					
In two months	0.90	0.70	1.10	49	Graph14
In eleven months	1.00	0.80	1.20	48	Graph15
In twenty three months forward	1.20	1.00	1.50	47	Graph16
4.5-Year BCP (%) (*)					
In two months	3.80	3.60	4.00	48	Graph17
In eleven months	4.00	3.70	4.20	47	Graph18
In twenty three months forward	4.20	3.90	4.40	46	Graph19
5.Exchange Rate (CH \$ per US\$ 1) (*)					
In two months	670	655	680	53	Graph20
In eleven months	660	640	680	53	Graph21
In twenty three months forward	650	625	685	51	Graph22
6.IMACEC (Monthly Activity Index)					
One month ago	2.30	2.00	3.00	52	Graph23
7.IMACEC No Mining (monthly activity index)					
One month ago	2.40	2.10	2.90	41	Graph24
8.GDP (12-month change)					
EWithin calendar quarter of the survey	2.80	2.30	3.40	52	Graph25
Year 2019	3.20	2.90	3.40	54	Graph26
Year 2020	3.40	3.00	3.70	53	Graph27
Year 2021	3.40	3.00	3.60	48	Graph28
9.GDP No Mining (12-month change)					
Within calendar quarter of the survey	2.90	2.30	3.20	43	Graph29
Year 2019	3.30	3.00	3.70	43	Graph30
Year 2020	3.40	3.00	3.80	43	Graph31
Year 2021	3.40	2.90	3.80	40	Graph32

(*) End of the month.

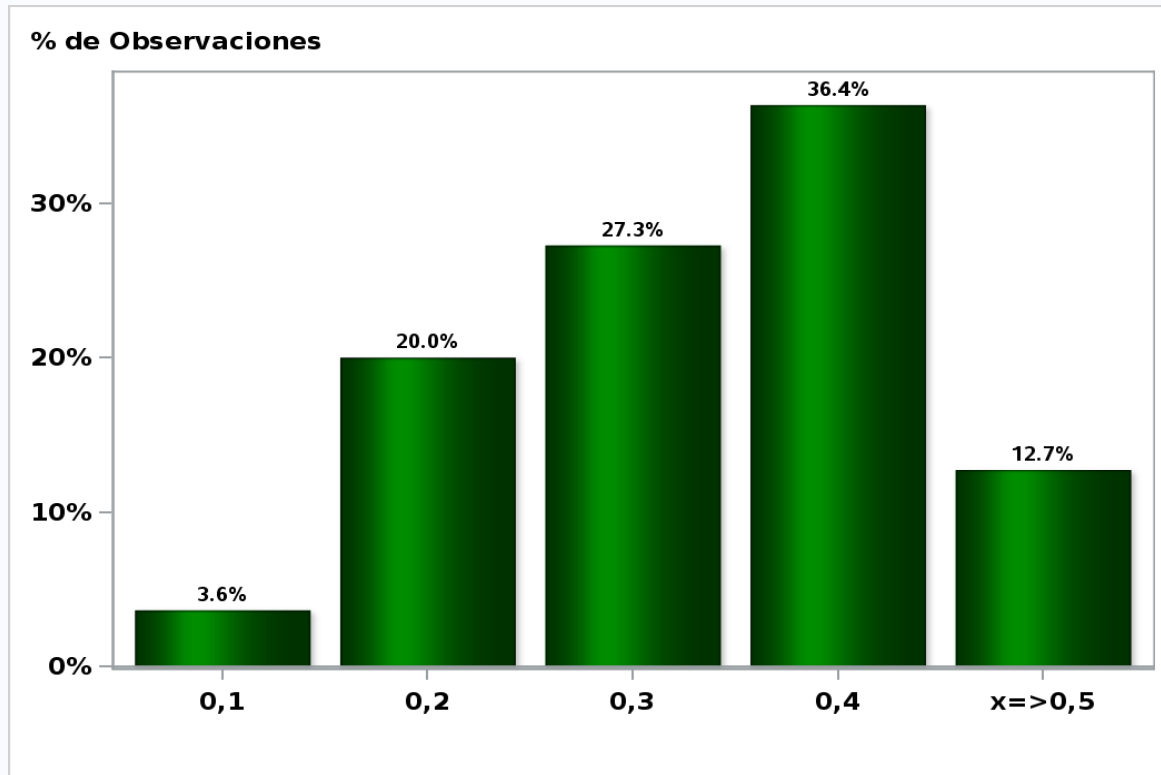
Monthly survey of selected academics, consultants, and executives or advisors of financial institutions and corporations. It is completed the day after the publication of the CPI or IMACEC (Monthly activity index), whichever the last known, and it is published the day after its reception, at 8:30 hrs. approximately (www.bcentral.cl, Statistics section, Economic Surveys, Website: <http://www.bcentral.cl/en/web/central-bank-of-chile/economic-expectations>)

The sample size of surveyed analysts was increased since April 2011.

Monthly Survey On Expectations May 2019

Inflation current month (monthly change)

Answers: 55 Median: 0,3%

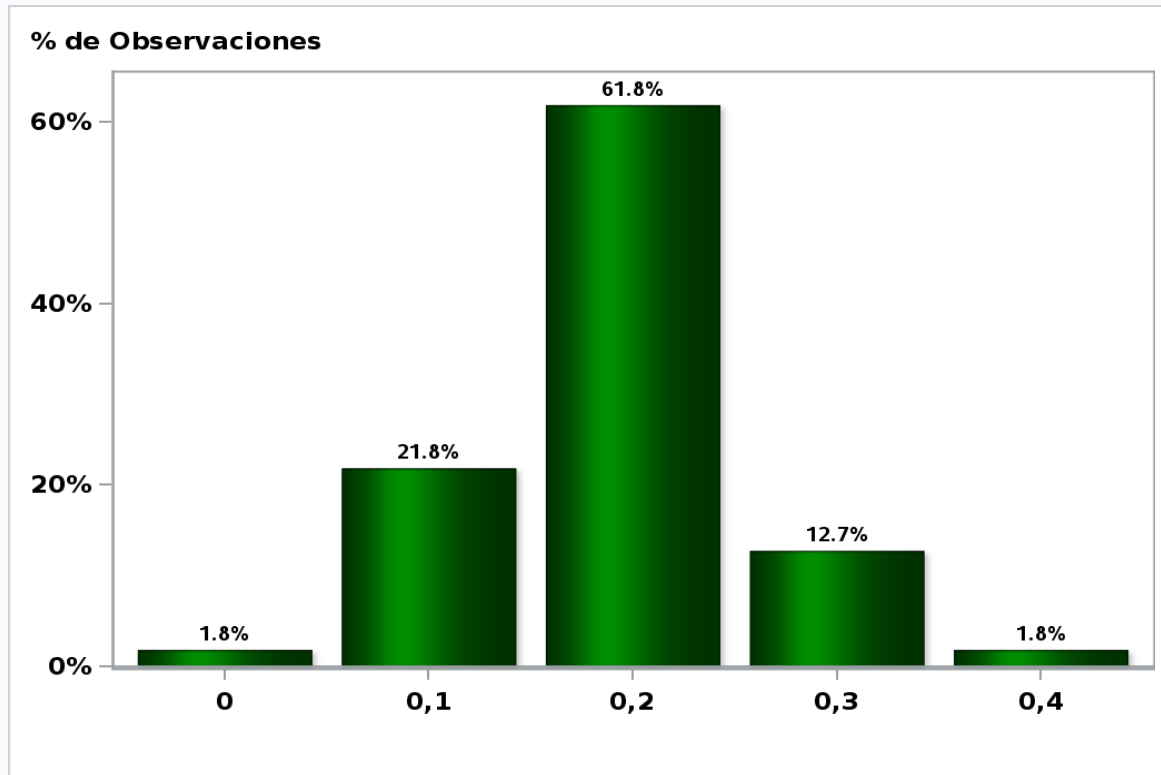


[Click to view summary table](#)

Monthly Survey On Expectations May 2019

Inflation next month (monthly change)

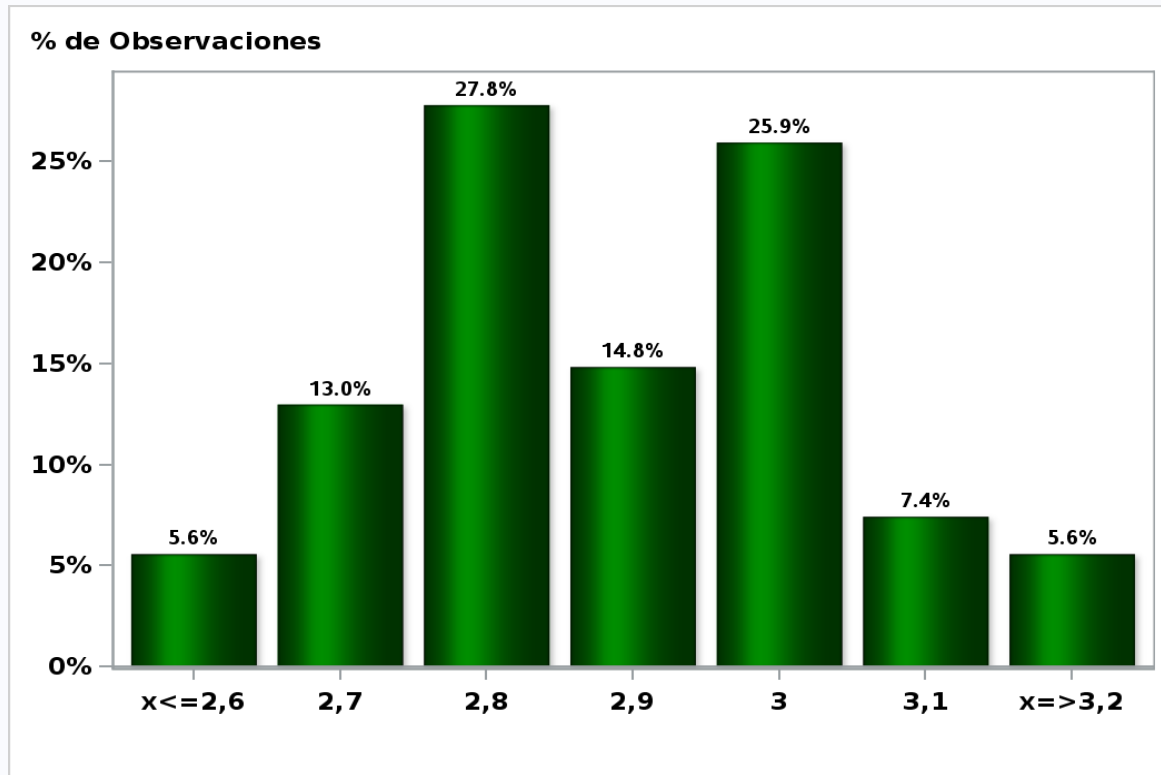
Answers: 55 Median: 0,2%



[Click to view summary table](#)

Monthly Survey On Expectations May 2019
Inflation in eleven months (12-month change)

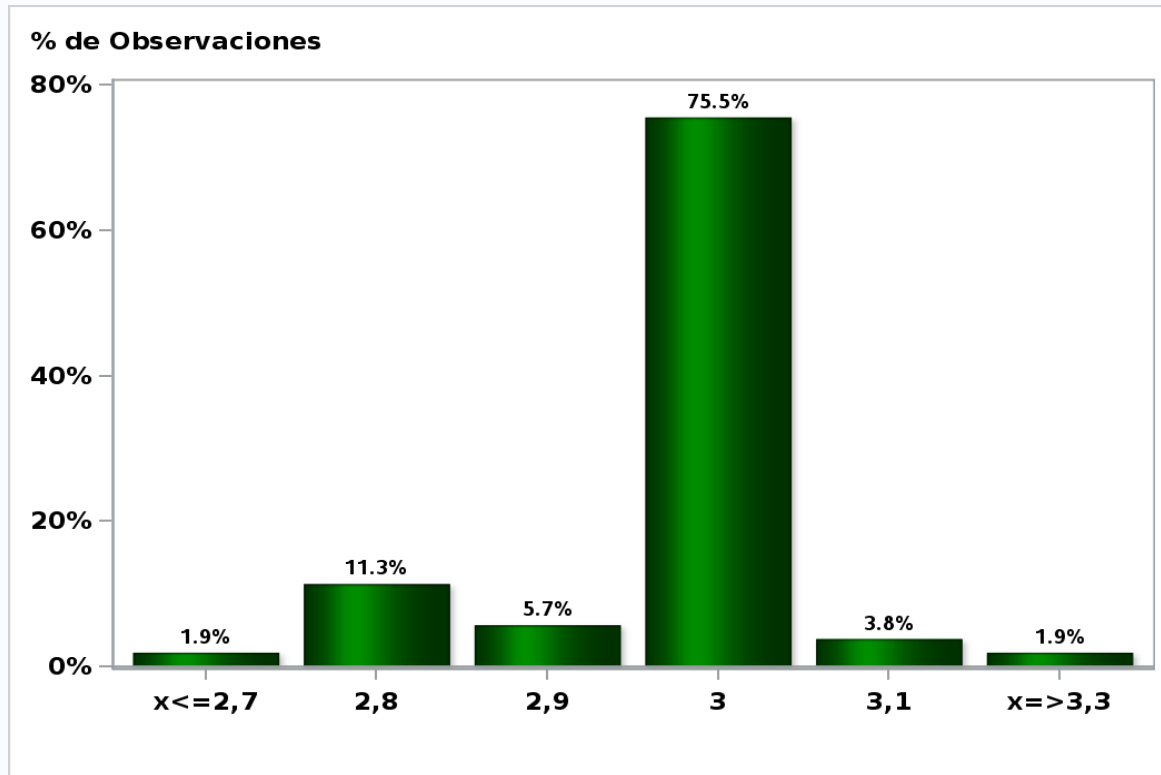
Answers: 54 Median: 2,9%



[Click to view summary table](#)

Monthly Survey On Expectations May 2019
Inflation in twenty three months (12-month change)

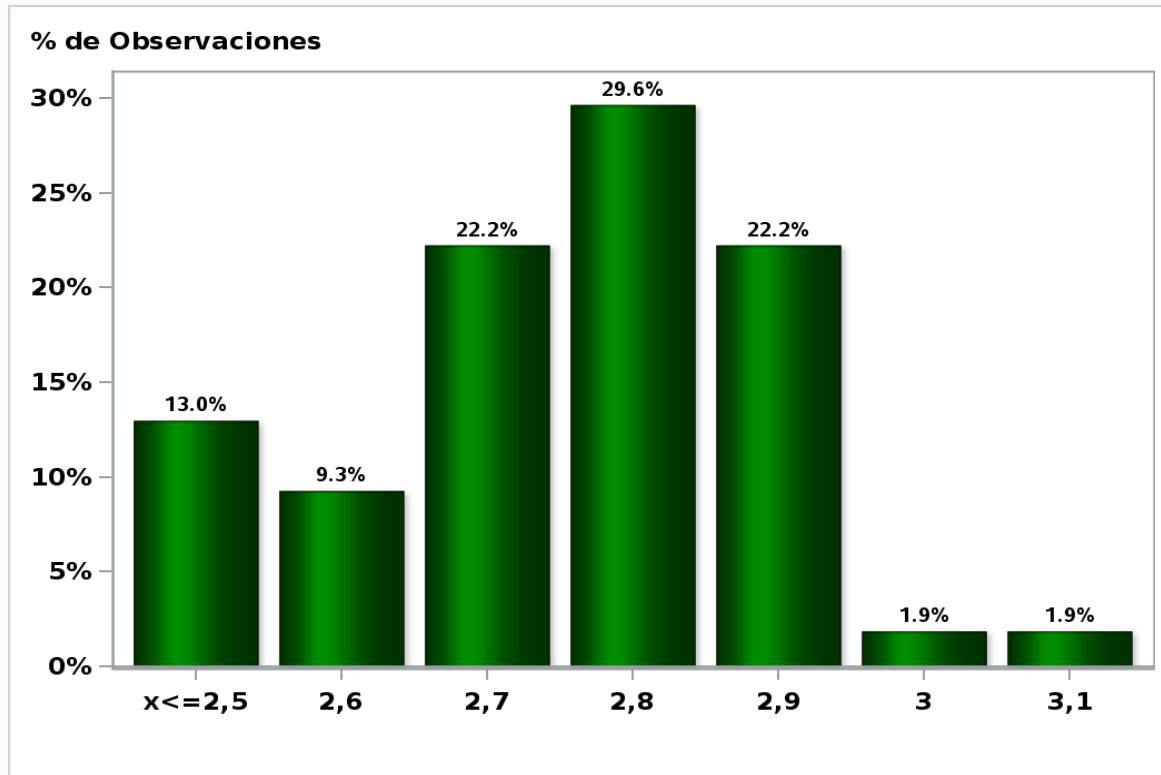
Answers: 53 Median: 3%



[Click to view summary table](#)

Monthly Survey On Expectations May 2019
Inflation december 2019 (12-month change)

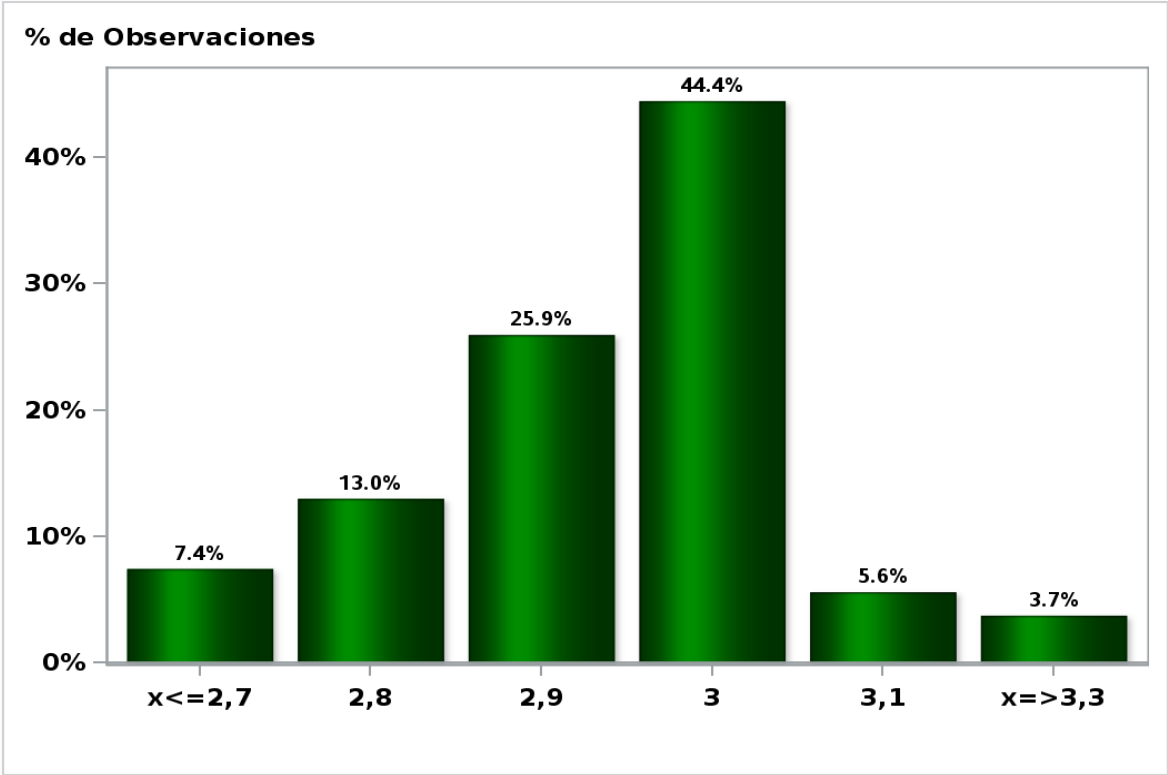
Answers: 54 Median: 2,8%



[Click to view summary table](#)

Monthly Survey On Expectations May 2019
Inflation december 2020 (12-month change)

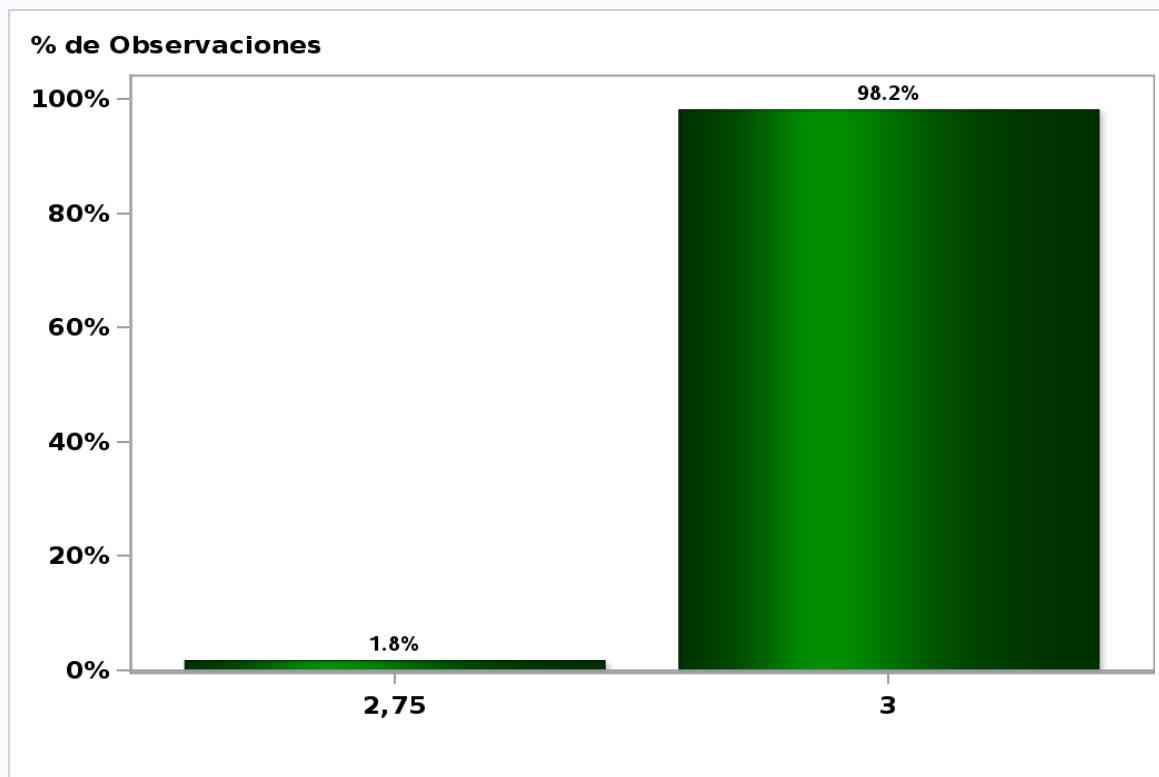
Answers: 54 Median: 3%



[Click to view summary table](#)

Monthly Survey On Expectations May 2019
Monetary Policy rate target following meeting

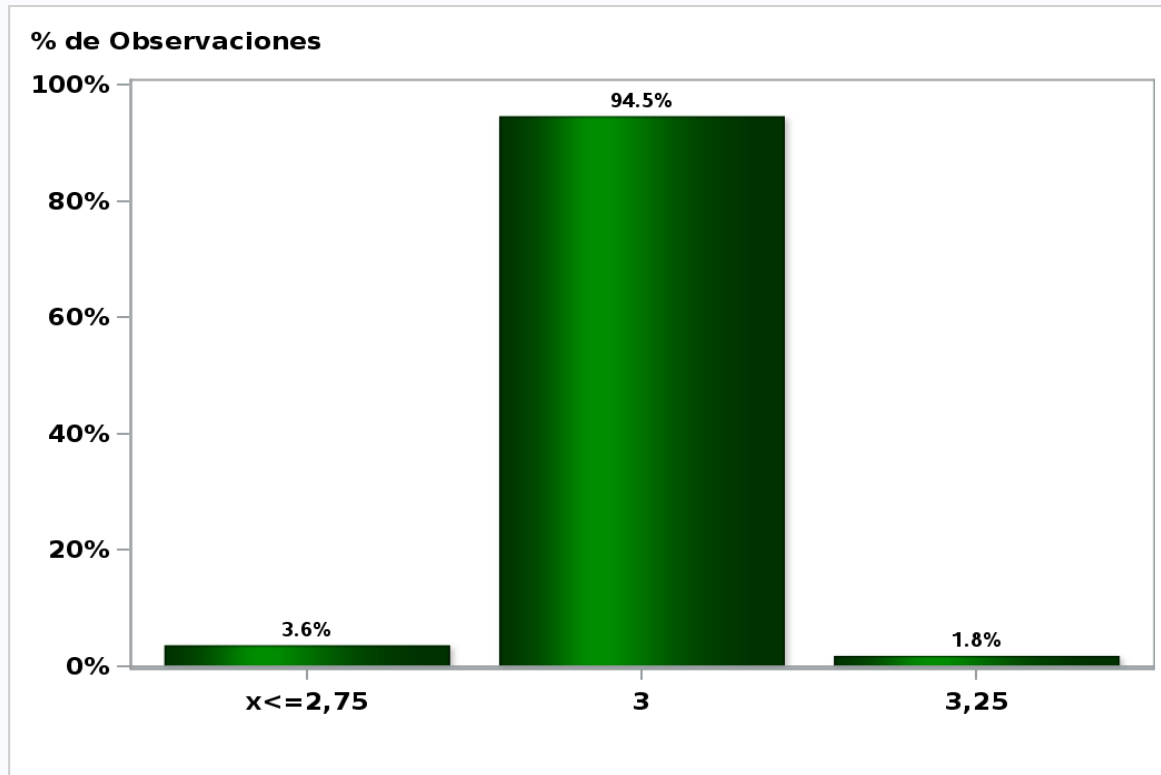
Answers: 55 Median: 3%



[Click to view summary table](#)

Monthly Survey On Expectations May 2019
Monetary Policy rate target second following meeting

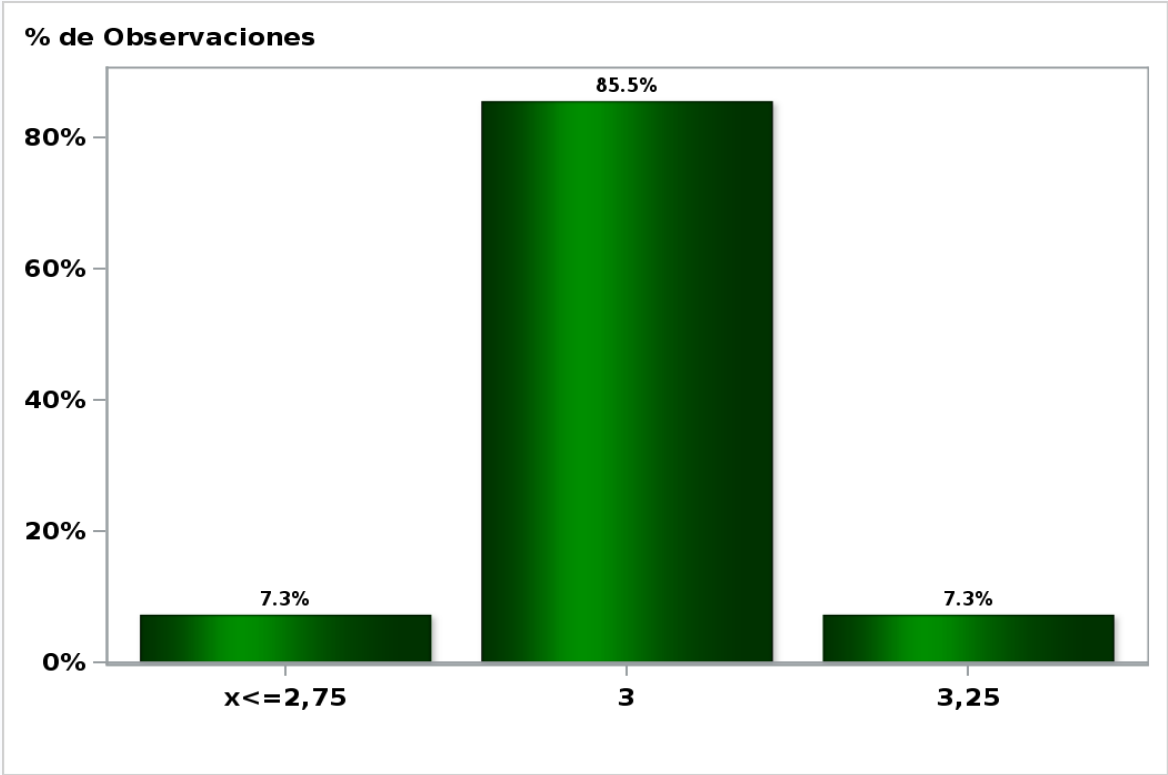
Answers: 55 Median: 3%



[Click to view summary table](#)

Monthly Survey On Expectations May 2019
Monetary Policy rate target In five months

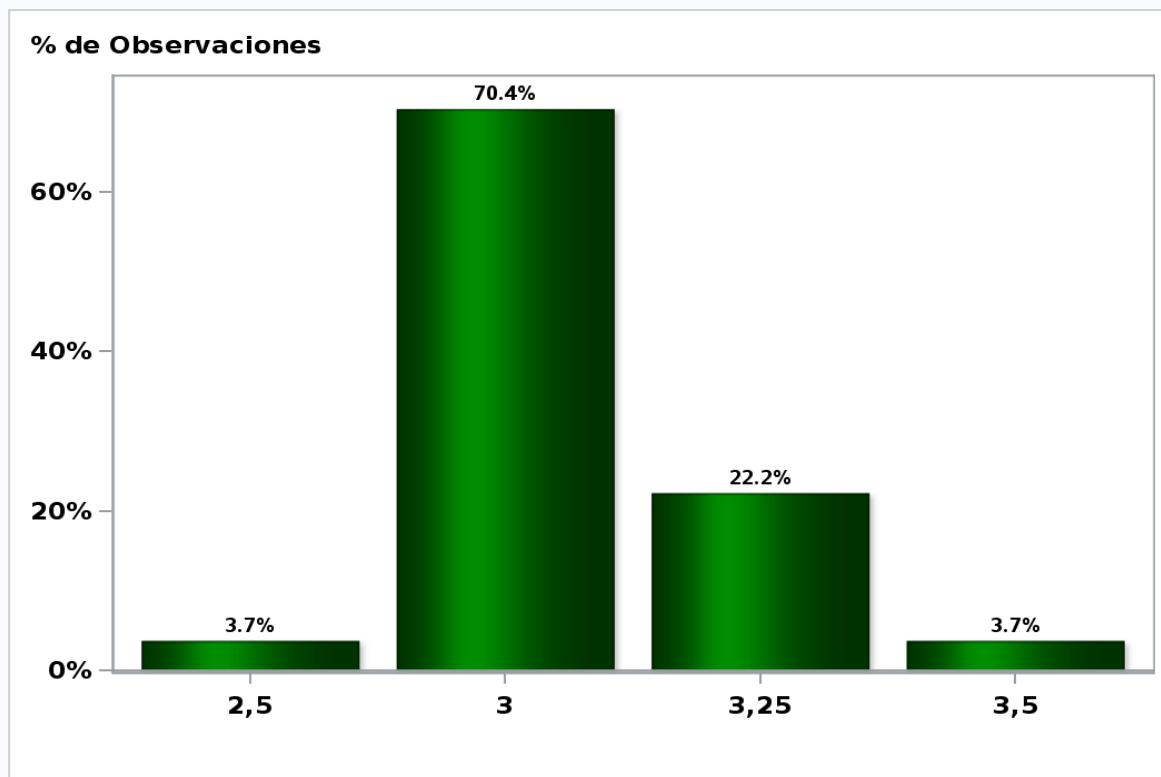
Answers: 55 Median: 3%



[Click to view summary table](#)

Monthly Survey On Expectations May 2019
Monetary Policy rate target december 2019

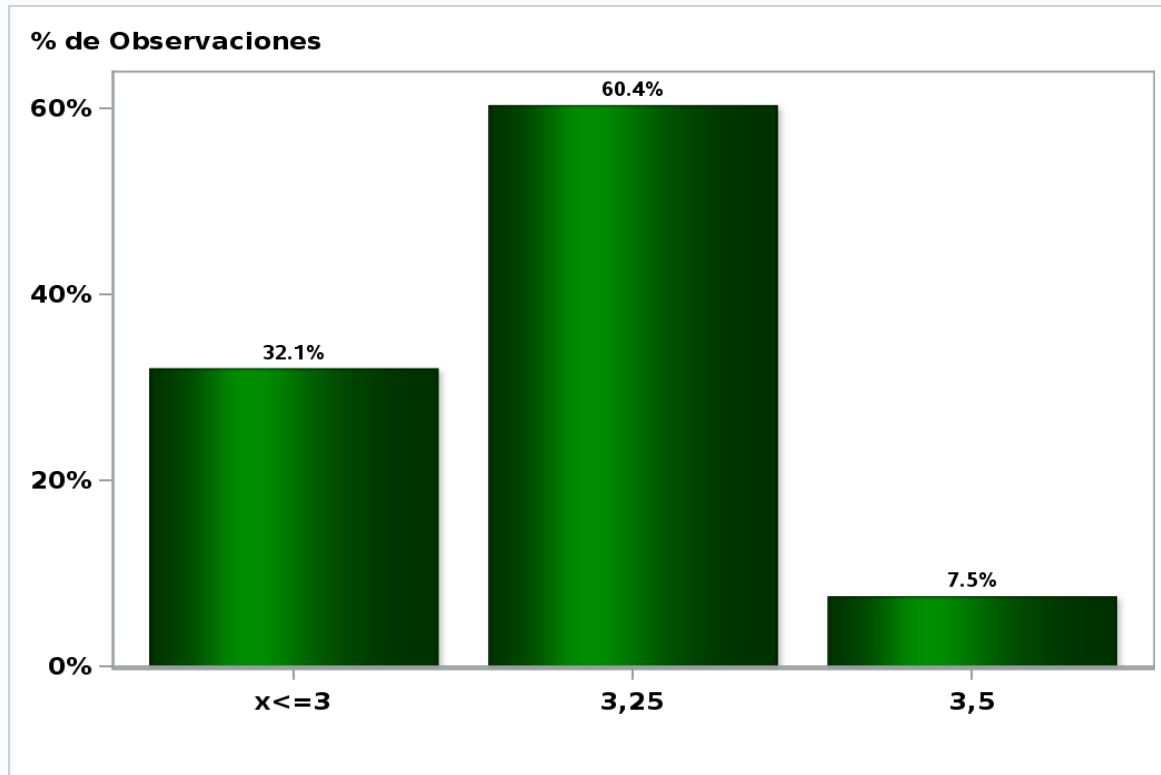
Answers: 54 Median: 3%



[Click to view summary table](#)

Monthly Survey On Expectations May 2019
Monetary Policy rate target in eleven months

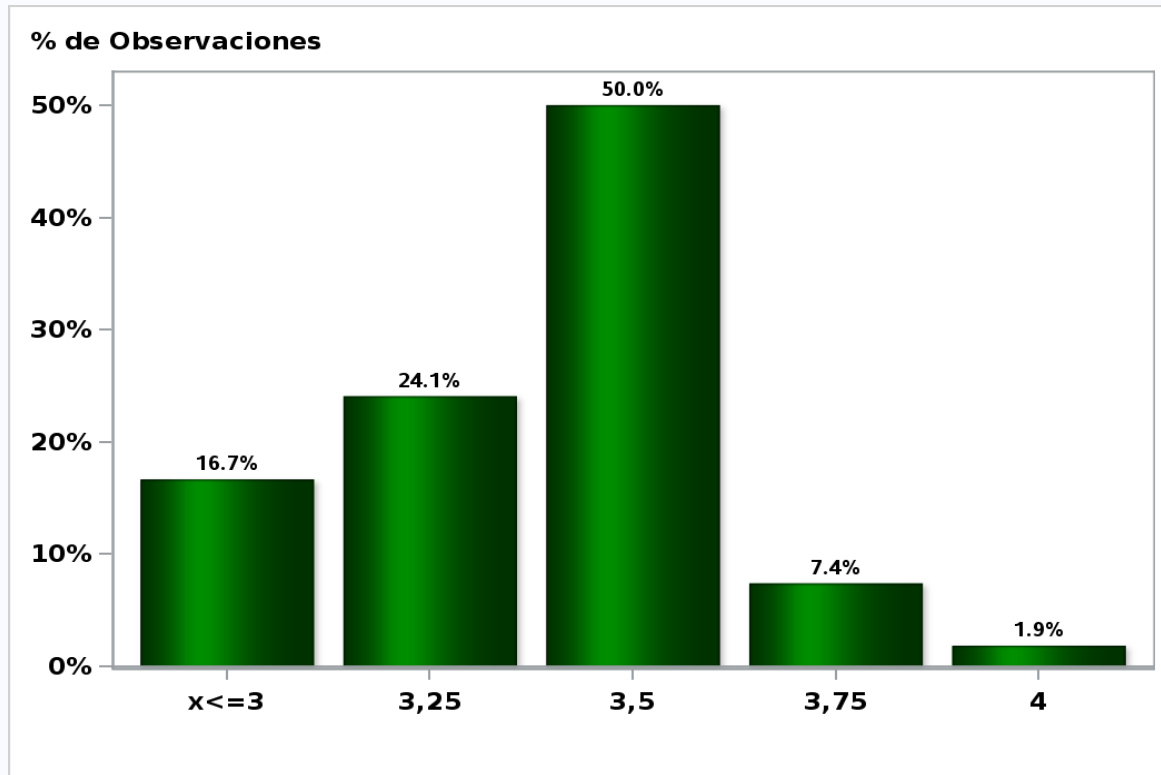
Answers: 53 Median: 3,25%



[Click to view summary table](#)

Monthly Survey On Expectations May 2019
Monetary Policy rate target in seventeen months

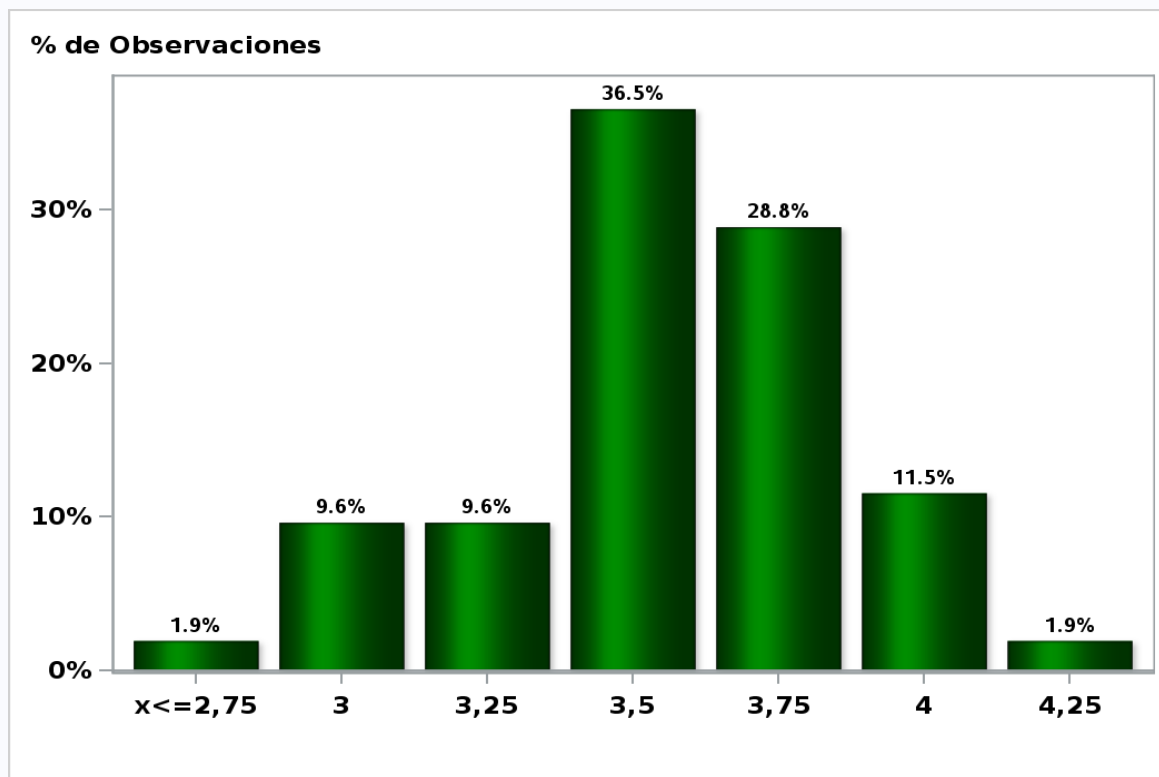
Answers: 54 Median: 3,5%



[Click to view summary table](#)

Monthly Survey On Expectations May 2019
Monetary Policy rate target in twenty three months

Answers: 52 Median: 3,5%

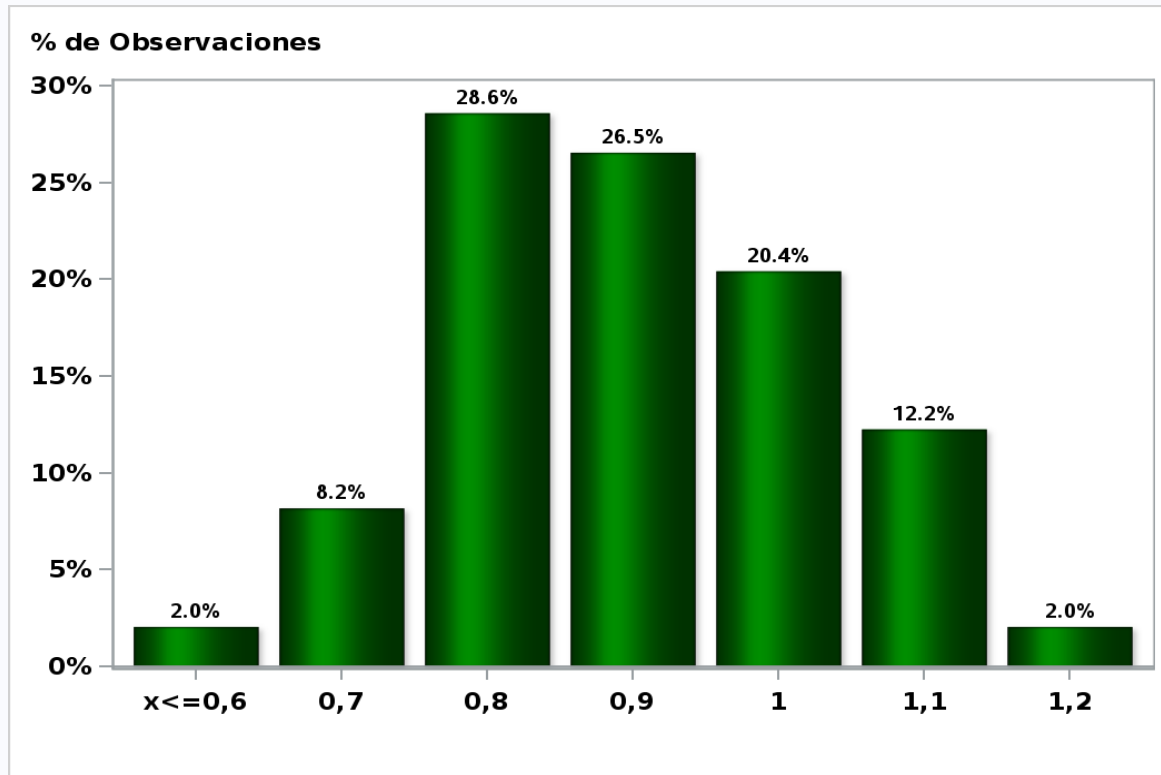


[Click to view summary table](#)

Monthly Survey On Expectations May 2019

5-Year BCU In two months

Answers: 49 Median: 0,9%

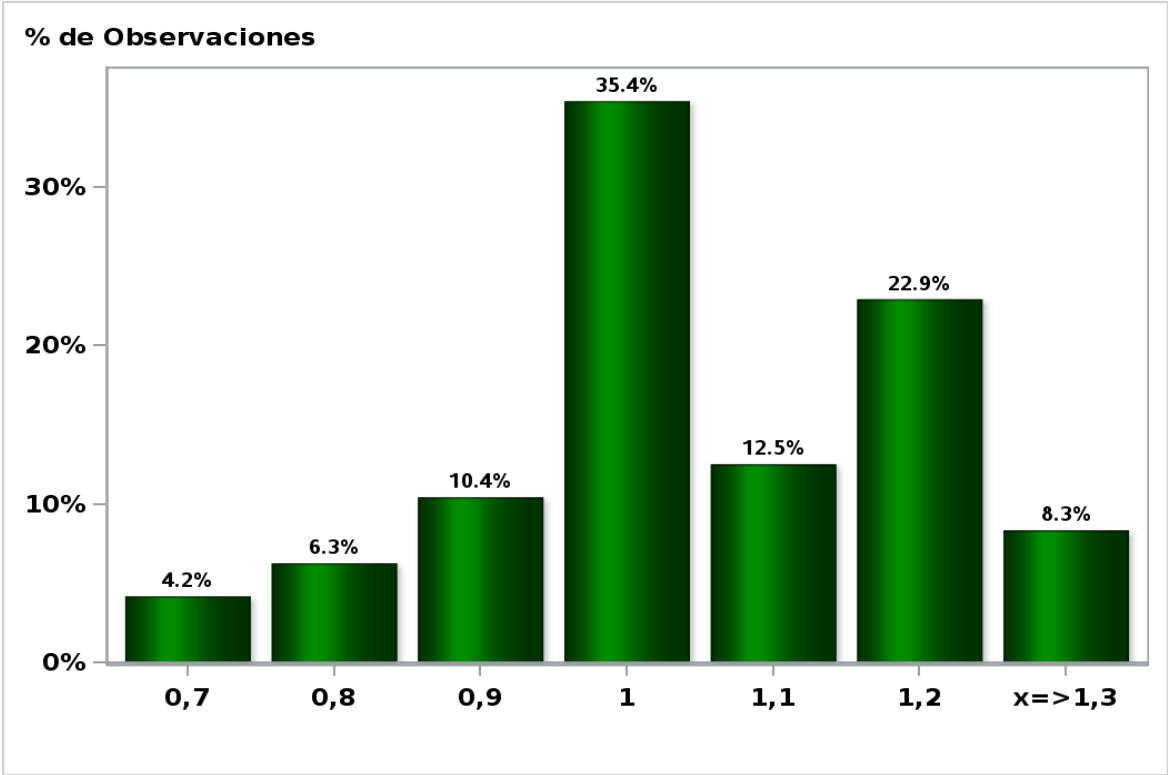


[Click to view summary table](#)

Monthly Survey On Expectations May 2019

5-Year BCU in eleven months

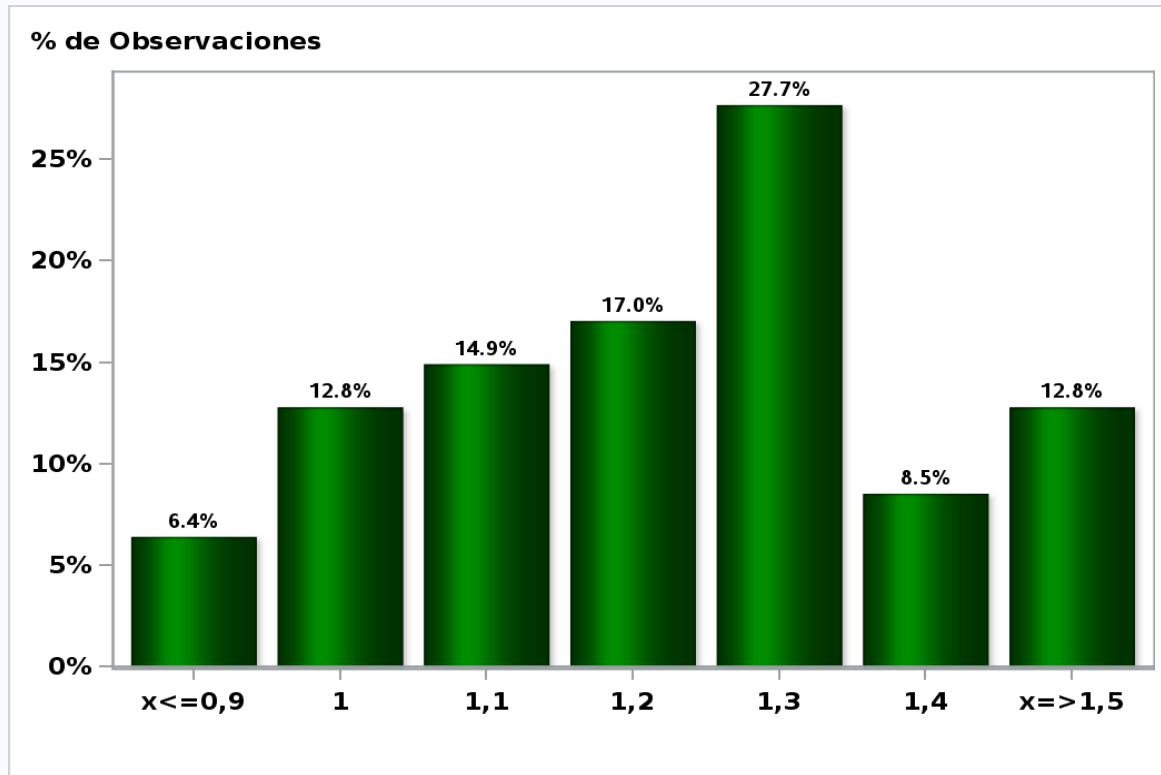
Answers: 48 Median: 1%



[Click to view summary table](#)

Monthly Survey On Expectations May 2019
5-Year BCU in twenty three months forward

Answers: 47 Median: 1,2%

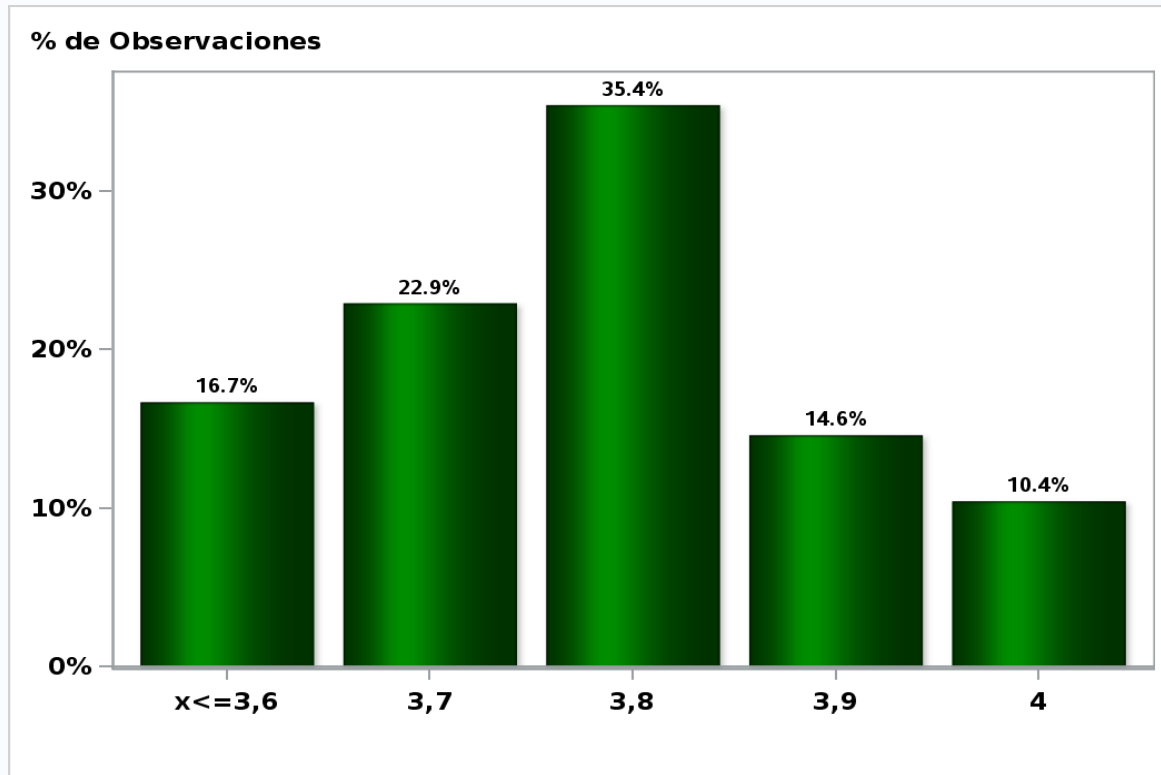


[Click to view summary table](#)

Monthly Survey On Expectations May 2019

5-Year BCP in two months

Answers: 48 Median: 3,8%

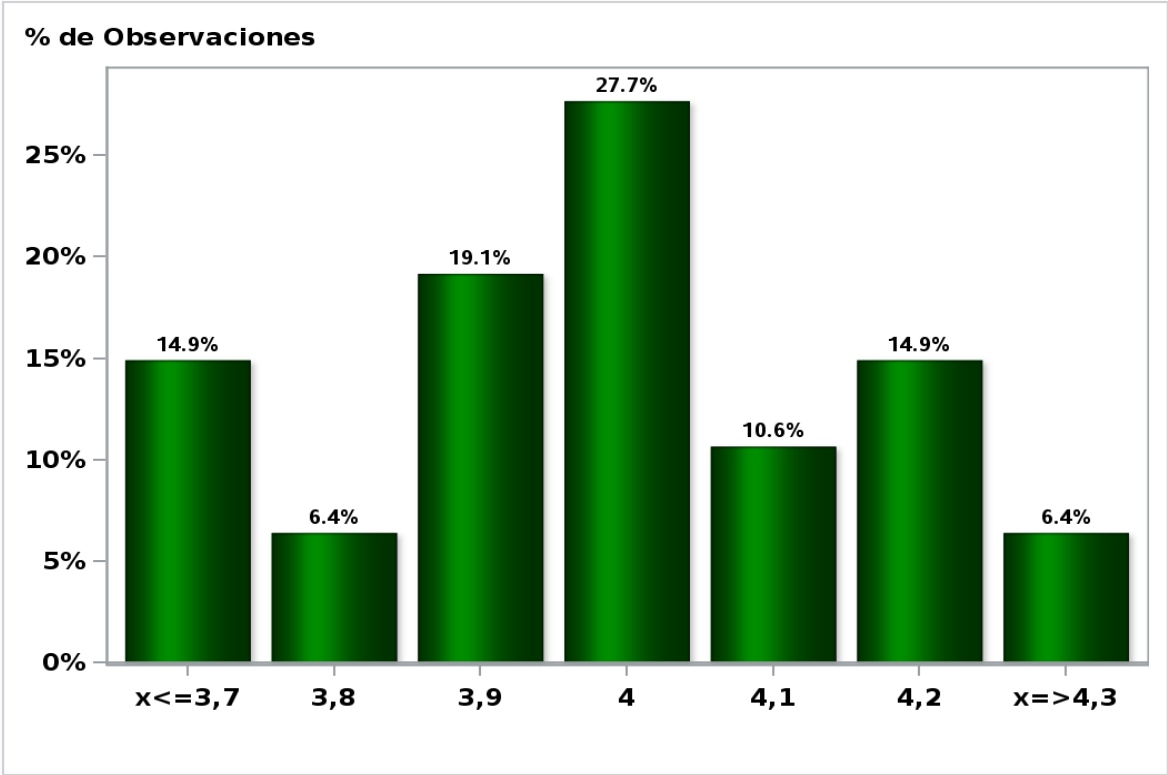


[Click to view summary table](#)

Monthly Survey On Expectations May 2019

5-Year BCP in eleven months

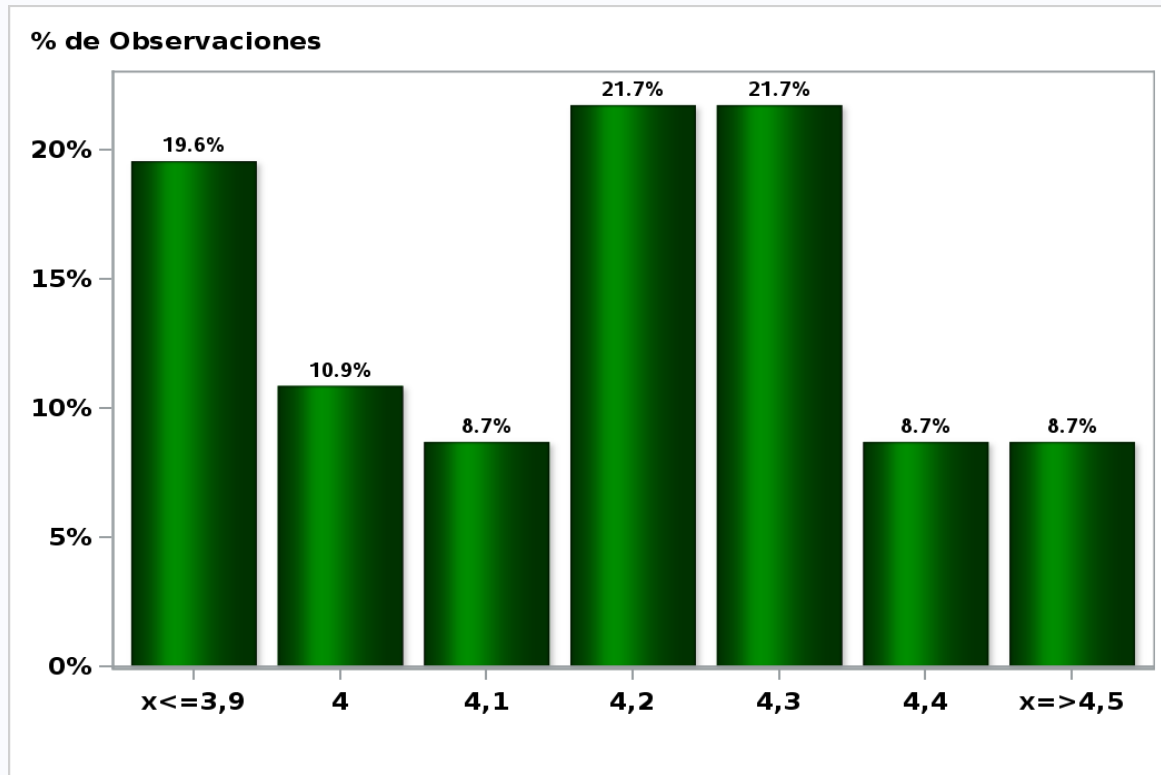
Answers: 47 Median: 4%



[Click to view summary table](#)

Monthly Survey On Expectations May 2019
5-Year BCP in twenty three months forward

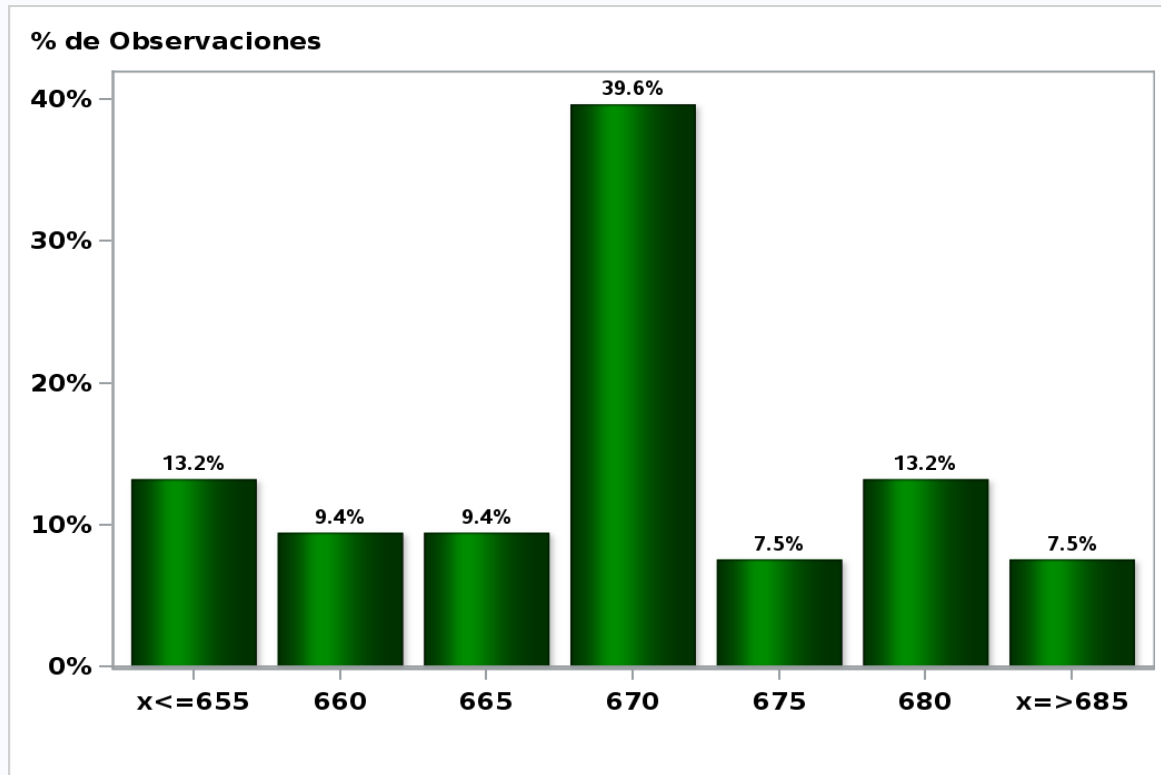
Answers: 46 Median: 4,2%



[Click to view summary table](#)

Monthly Survey On Expectations May 2019
Exchange Rate in two months (CH \$ per US\$)

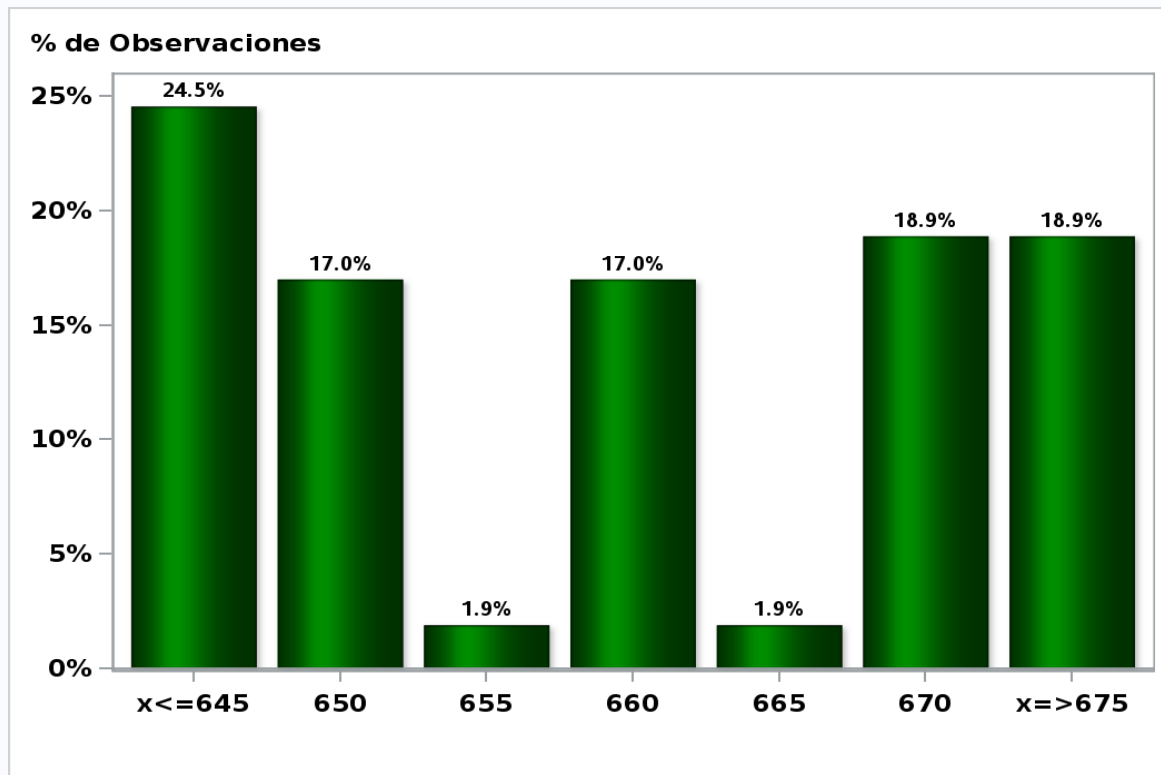
Answers: 53 Median: \$670



[Click to view summary table](#)

Monthly Survey On Expectations May 2019
Exchange Rate in eleven months (CH \$ per US\$)

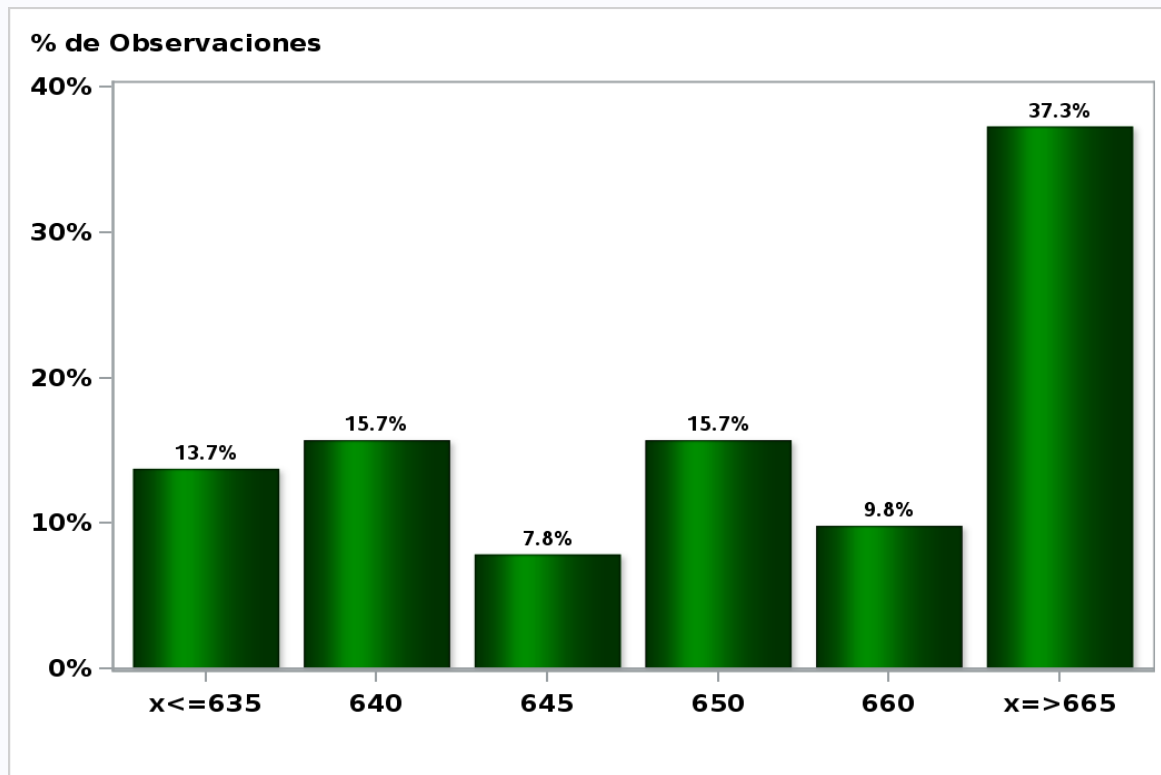
Answers: 53 Median: \$660



[Click to view summary table](#)

Monthly Survey On Expectations May 2019
Exchange Rate in twenty three months forward (CH \$ per US\$)

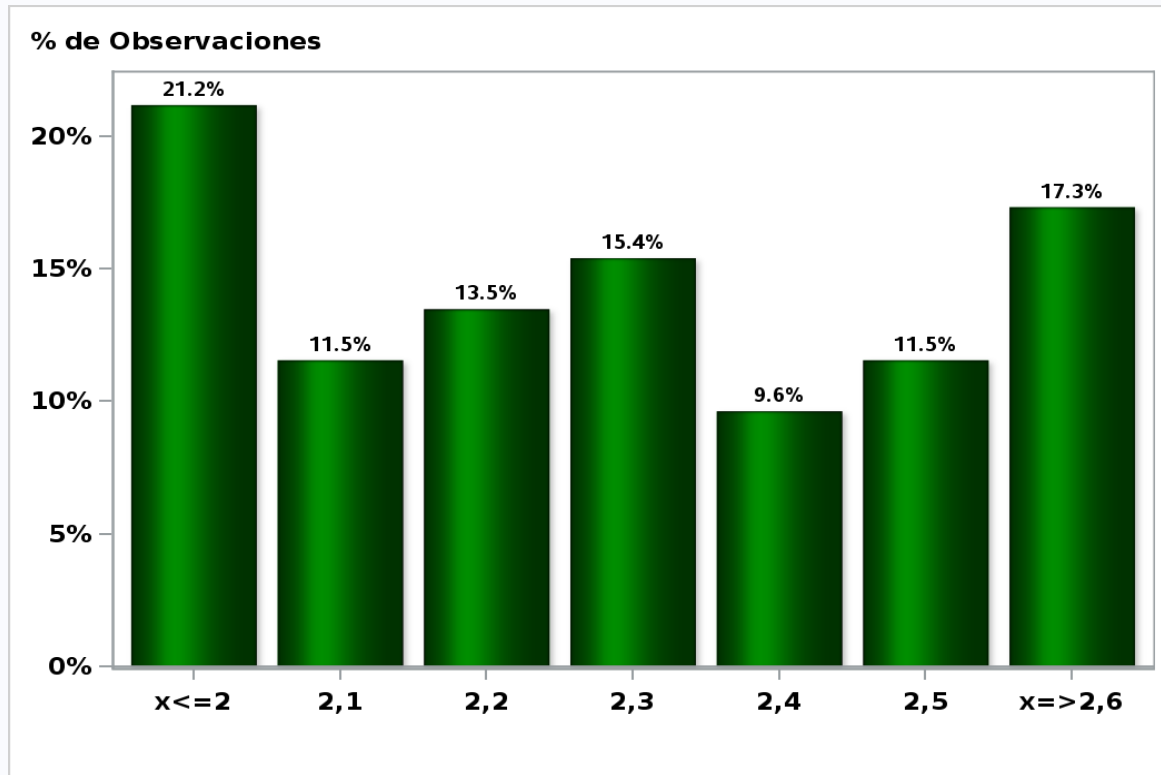
Answers: 51 Median: \$650



[Click to view summary table](#)

Monthly Survey On Expectations May 2019
IMACEC (Monthly Activity Index) one month ago

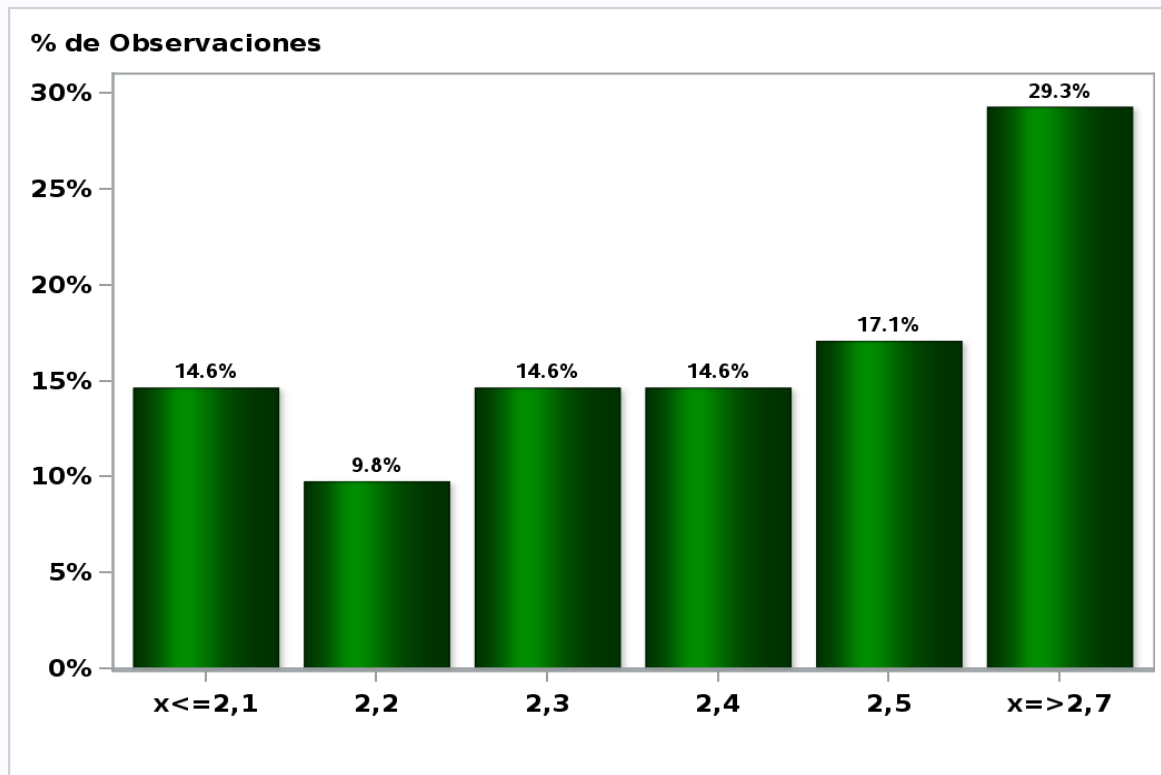
Answers: 52 Median: 2,3%



[Click to view summary table](#)

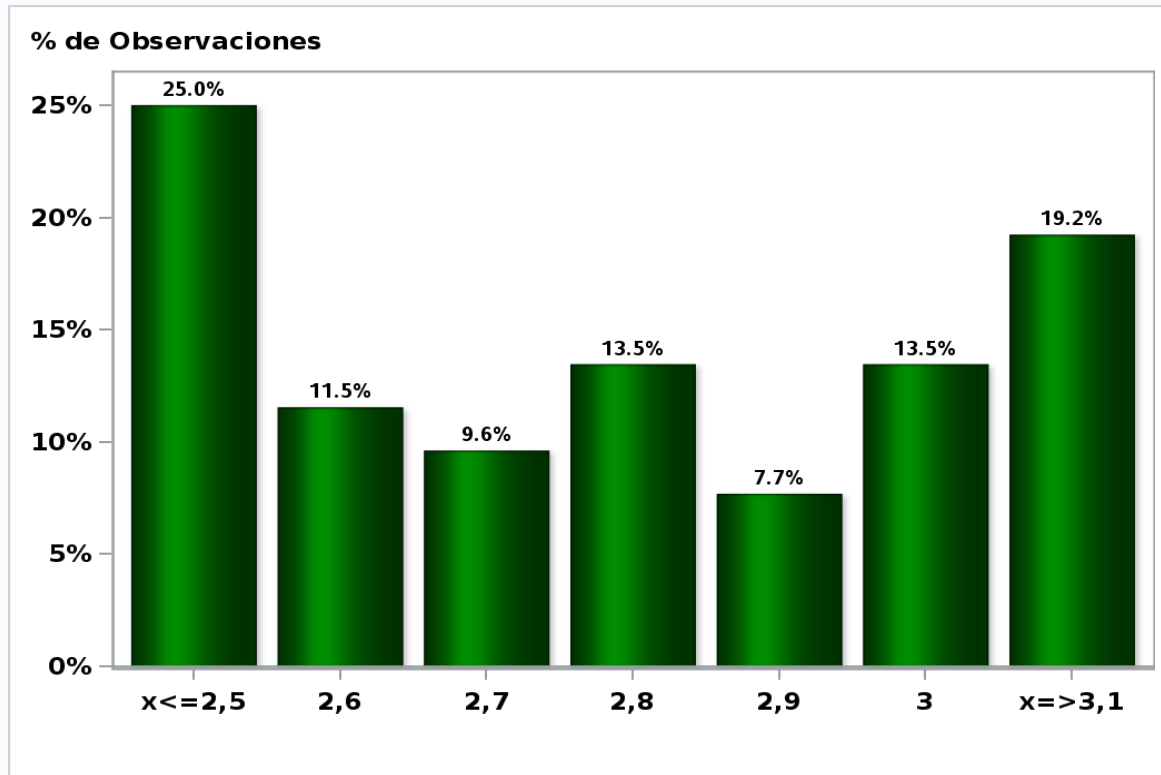
Monthly Survey On Expectations May 2019
IMACEC No Mining (Monthly Activity Index) one month ago

Answers: 41 Median: 2,4%



[Click to view summary table](#)

Monthly Survey On Expectations May 2019
GDP within calendar quarter of the survey
Answers: 52 Median: 2,8%

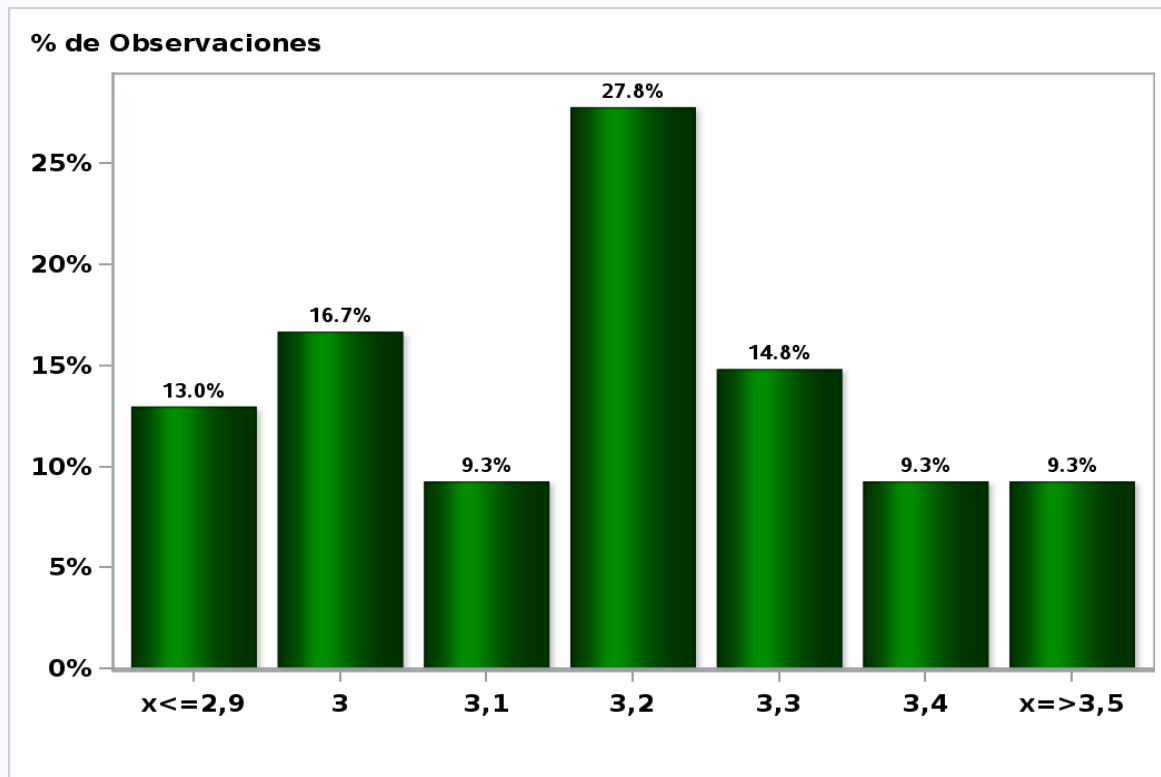


[Click to view summary table](#)

Monthly Survey On Expectations May 2019

GDP year 2019 (12-month change)

Answers: 54 Median: 3,2%

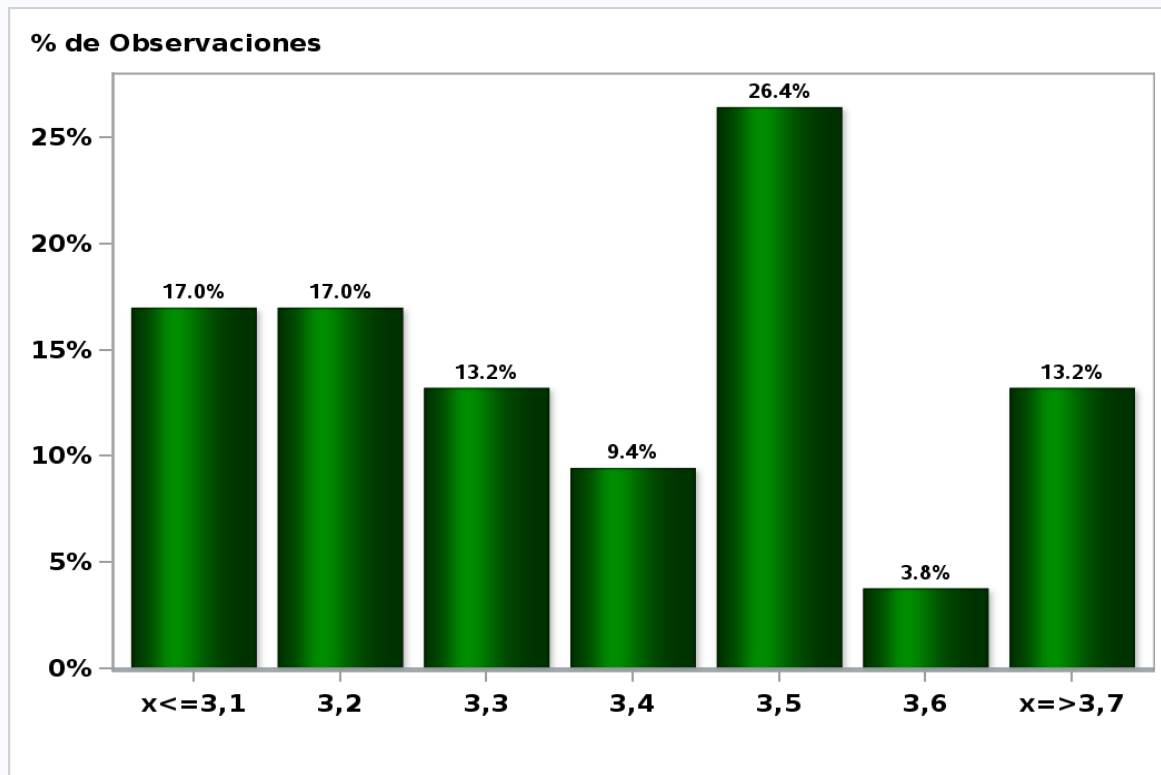


[Click to view summary table](#)

Monthly Survey On Expectations May 2019

GDP year 2020 (12-month change)

Answers: 53 Median: 3,4%

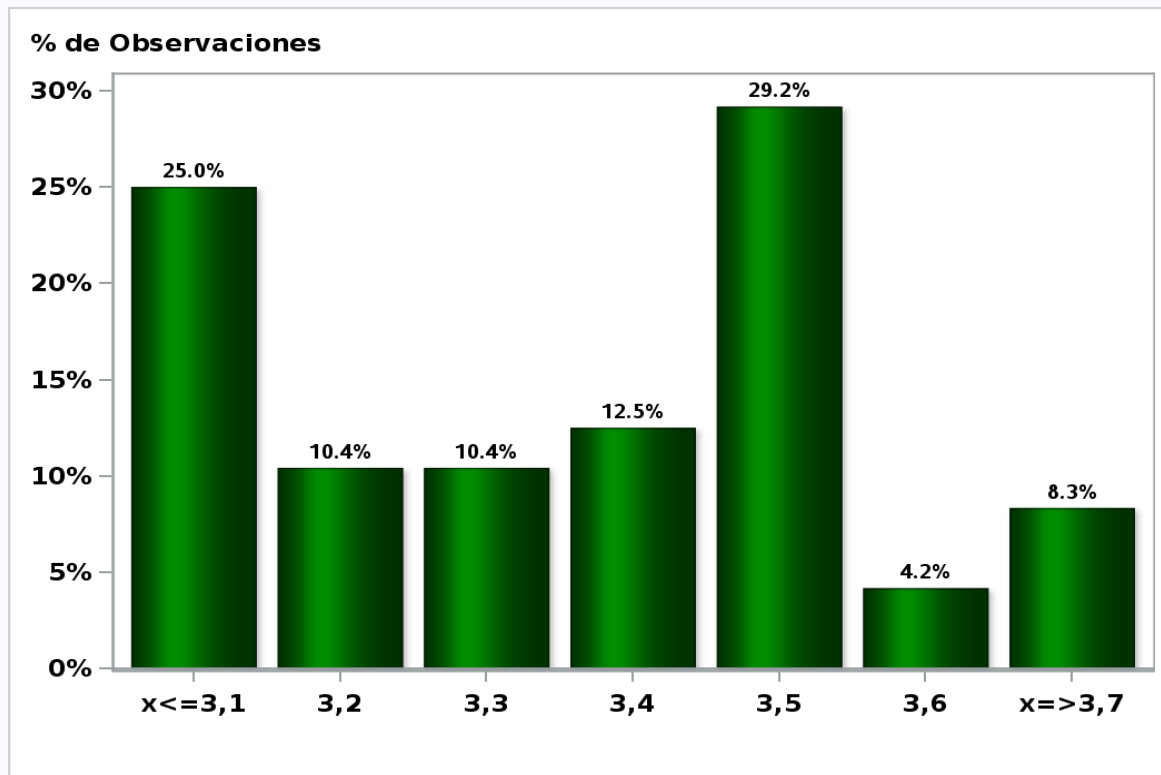


[Click to view summary table](#)

Monthly Survey On Expectations May 2019

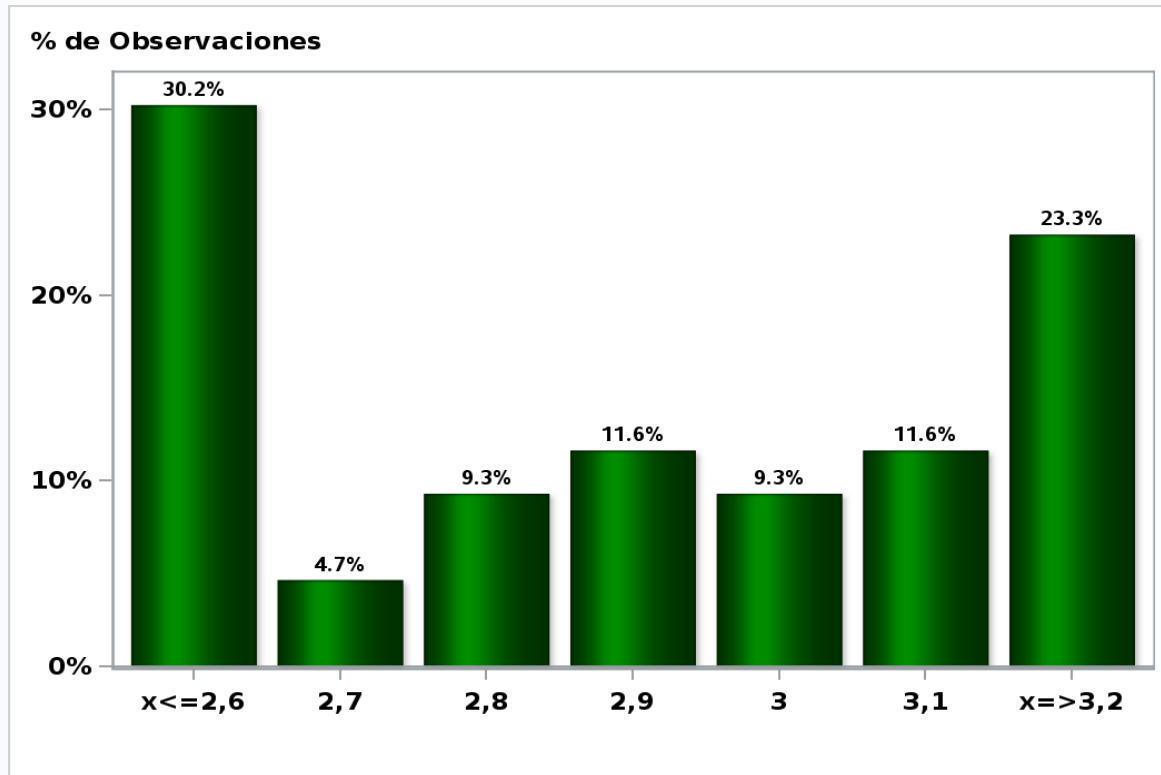
GDP year 2021 (12-month change)

Answers: 48 Median: 3,4%



[Click to view summary table](#)

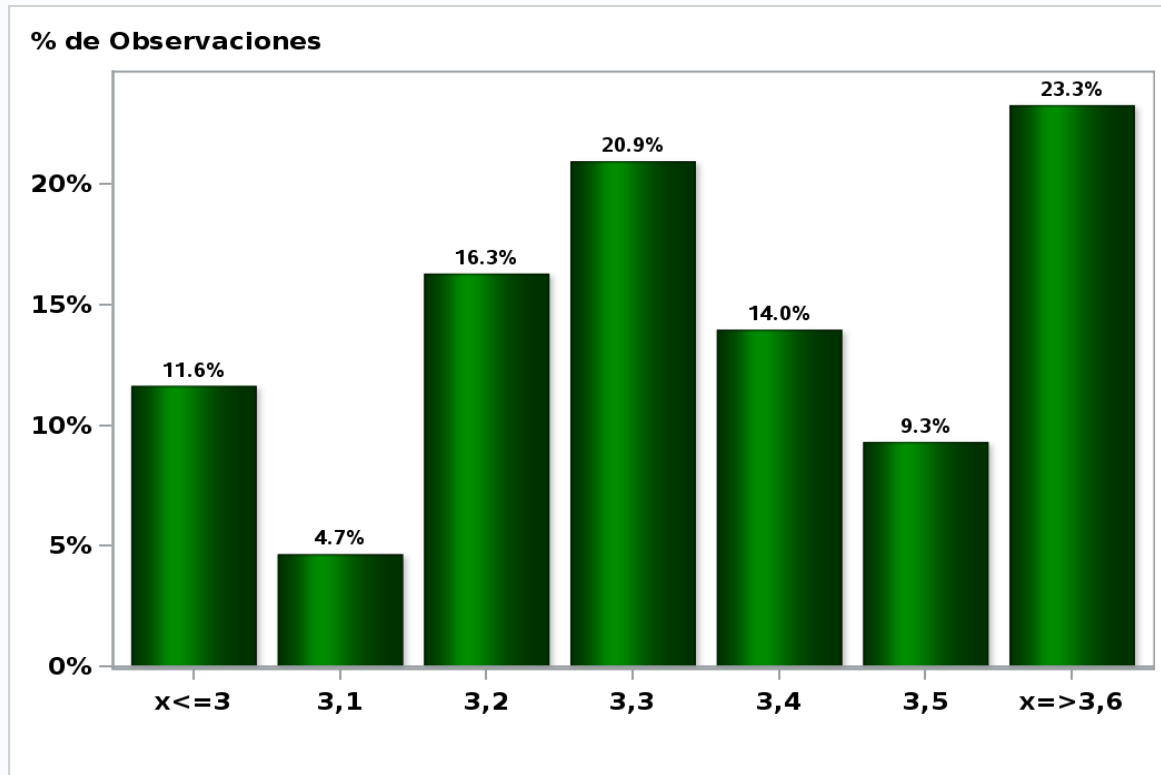
Monthly Survey On Expectations May 2019
GDP No Mining within calendar quarter of the survey
Answers: 43 Median: 2,9%



[Click to view summary table](#)

Monthly Survey On Expectations May 2019
GDP No Mining year 2019 (12-month change)

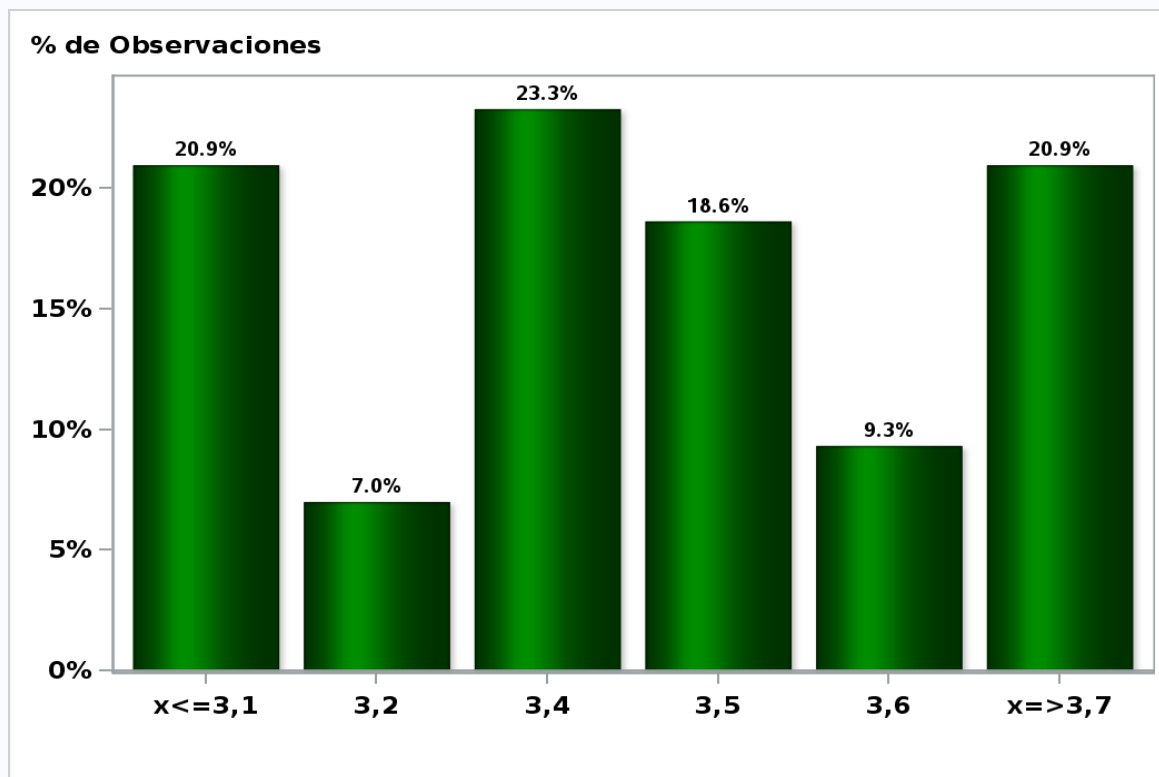
Answers: 43 Median: 3,3%



[Click to view summary table](#)

Monthly Survey On Expectations May 2019
GDP No Mining year 2020 (12-month change)

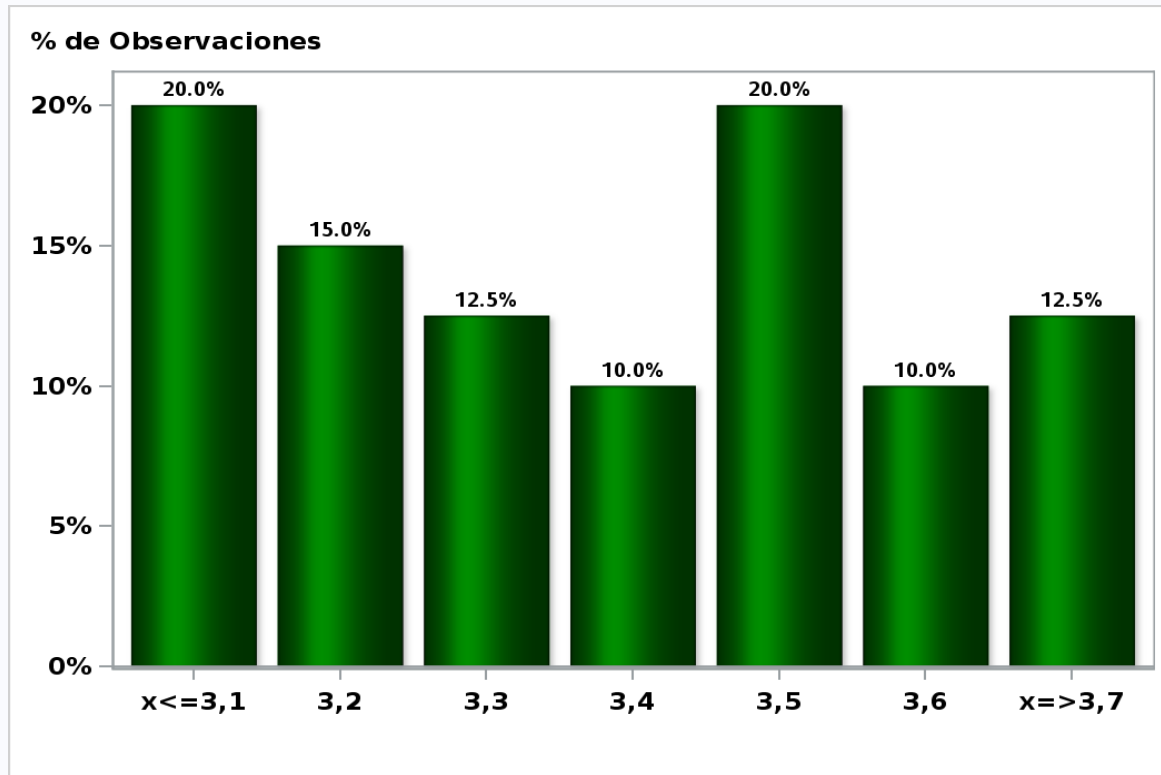
Answers: 43 Median: 3,4%



[Click to view summary table](#)

Monthly Survey On Expectations May 2019
GDP No Mining year 2021 (12-month change)

Answers: 40 Median: 3,4%



[Click to view summary table](#)