



## MONTHLY SURVEY ON EXPECTATIONS October 2012

Sent on October 3, 2012		Survey October 2012			
Deadline for responses: October 9, 2012		Median	decile 1	decile 9	Answers
<b>Inflation (% change)</b>					
Current month (monthly change)		0,3	0,1	0,4	62
Next month (monthly change)		0,2	0,1	0,3	62
In eleven months (12-month change)		3,0	2,5	3,3	60
In tw enty three months (12-month change)		3,0	2,9	3,2	59
December 2012 (12-month change)		2,1	1,8	2,7	62
December 2013 (12-month change)		3,0	2,6	3,1	61
<b>Monetary Policy rate target (%) (*)</b>					
Current month		5,00	5,00	5,00	62
Next month		5,00	5,00	5,00	62
In five months		5,00	4,75	5,00	60
December 2012		5,00	5,00	5,00	62
In eleven months		5,00	4,50	5,50	60
In seventeen months		5,00	4,50	5,50	59
In tw enty three months		5,25	4,50	5,50	59
<b>5-Year BCU (%) (*)</b>					
In tw o months		2,3	2,2	2,5	56
In eleven months		2,4	2,2	2,7	55
In tw enty three months forw ard		2,5	2,3	3,0	54
<b>5-Year BCP (%) (*)</b>					
In tw o months		5,4	5,2	5,5	56
In eleven months		5,4	5,1	5,7	55
In tw enty three months forw ard		5,5	5,2	6,0	53
<b>Exchange Rate (CH \$ per US\$ 1) (*)</b>					
In tw o months		480	470	490	58
In eleven months		490	479	500	58
In tw enty three months forw ard		500	475	518	55
<b>IMACEC (Monthly Activity Index)</b>					
One month ago		4,8	3,5	5,6	61
<b>GDP (12-month change)</b>					
Within calendar quarter of the survey		4,8	4,2	5,4	60
Year 2012		5,1	5,0	5,5	61
Year 2013		4,7	4,0	5,5	61
Year 2014		4,8	4,5	5,4	57

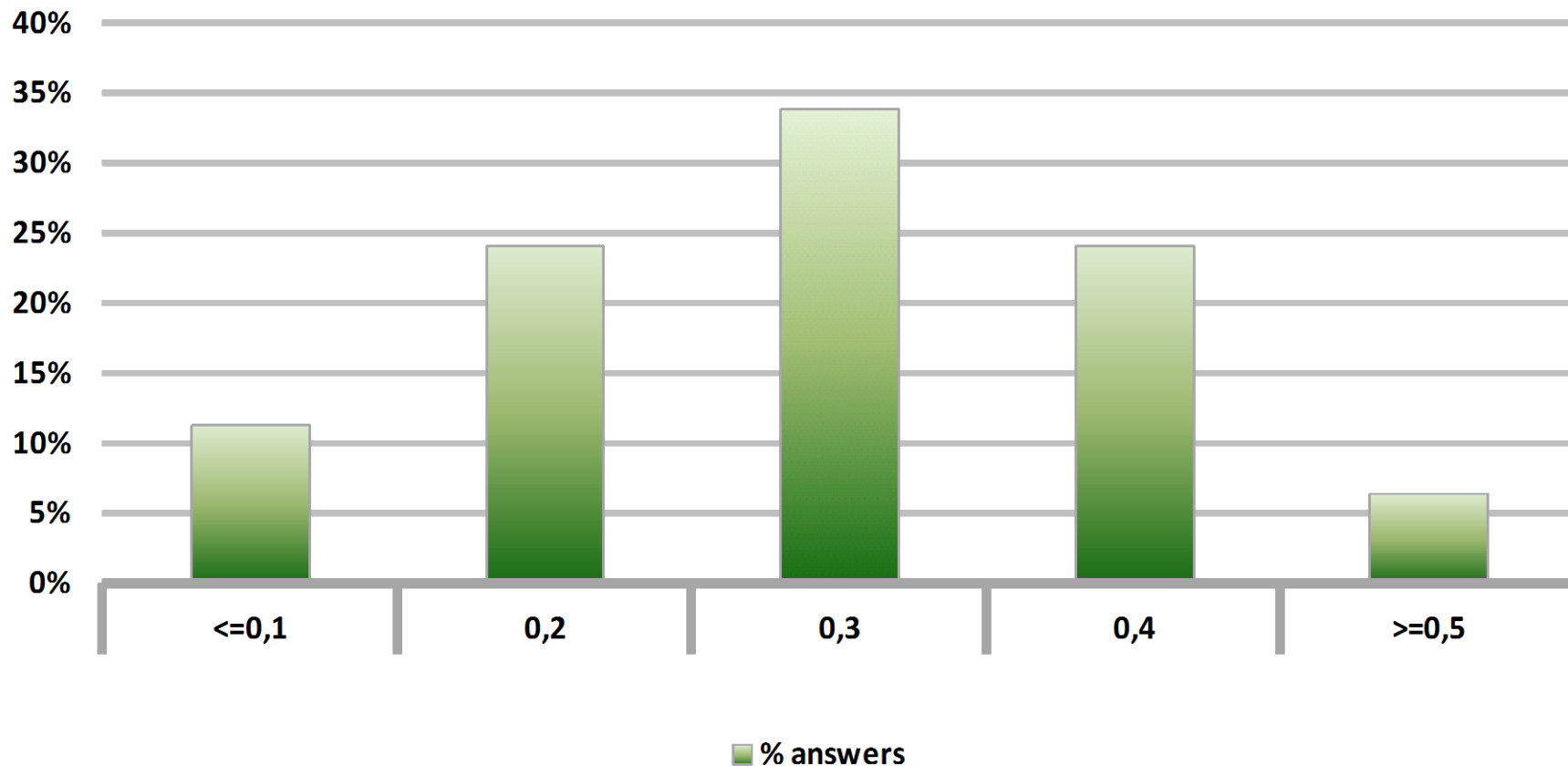


# Monthly Survey Expectations

## October 2012

### Inflation current month (monthly change)

Answers: 62



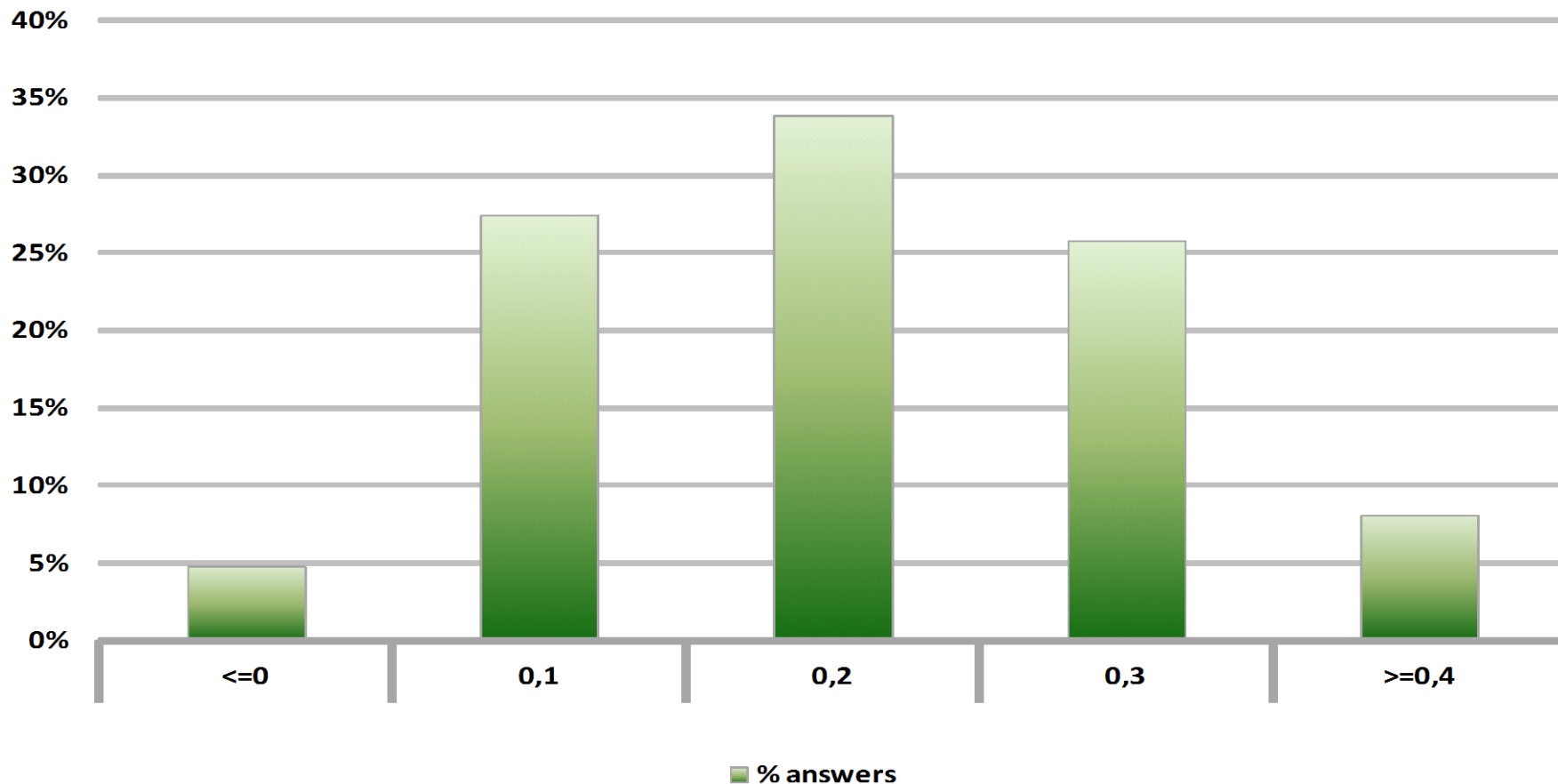


# Monthly Survey Expectations

## October 2012

### Inflation next month (monthly change)

Answers: 62



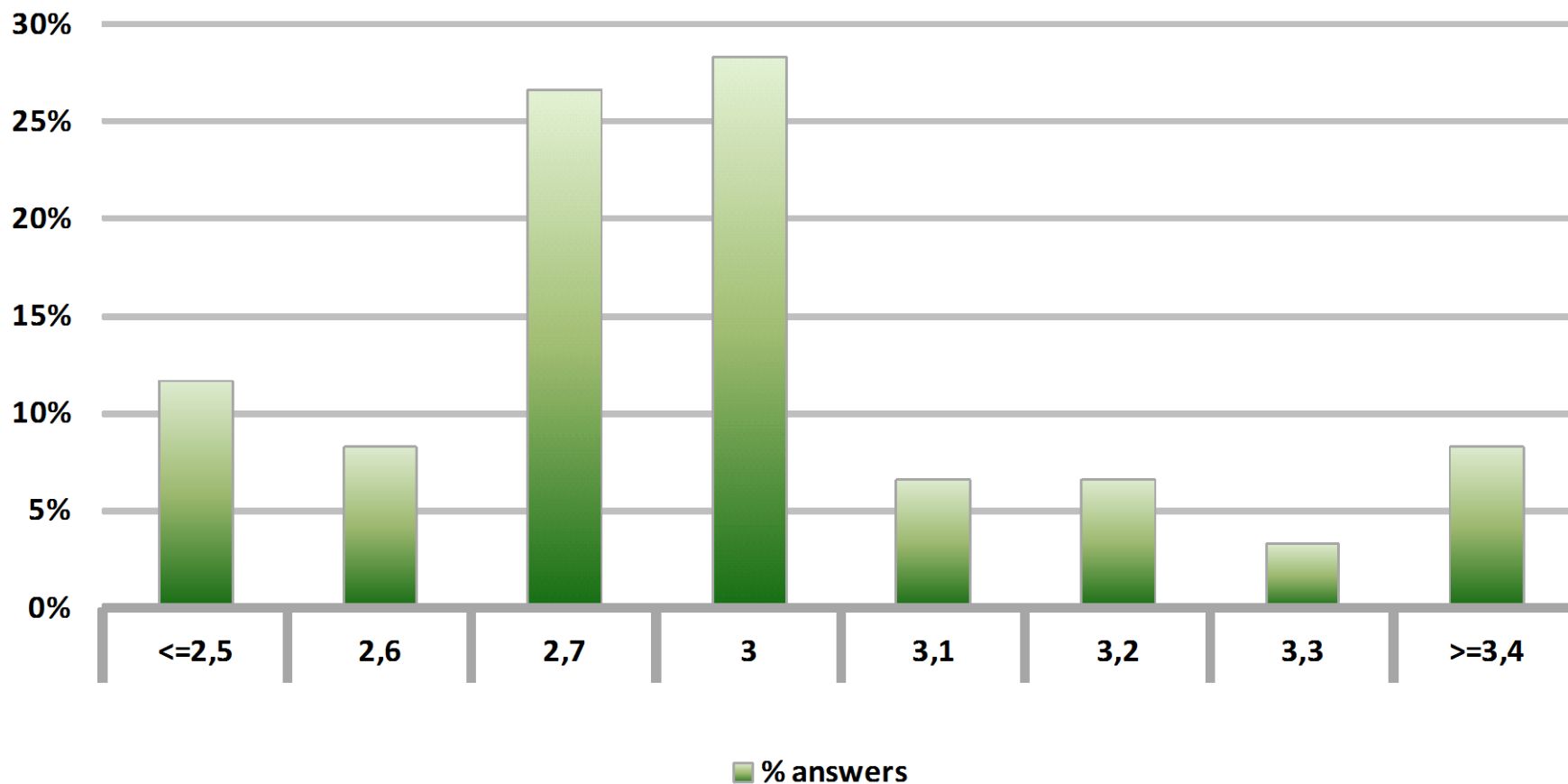


# Monthly Survey Expectations

## October 2012

### Inflation in eleven months (12-month change)

Answers: 60



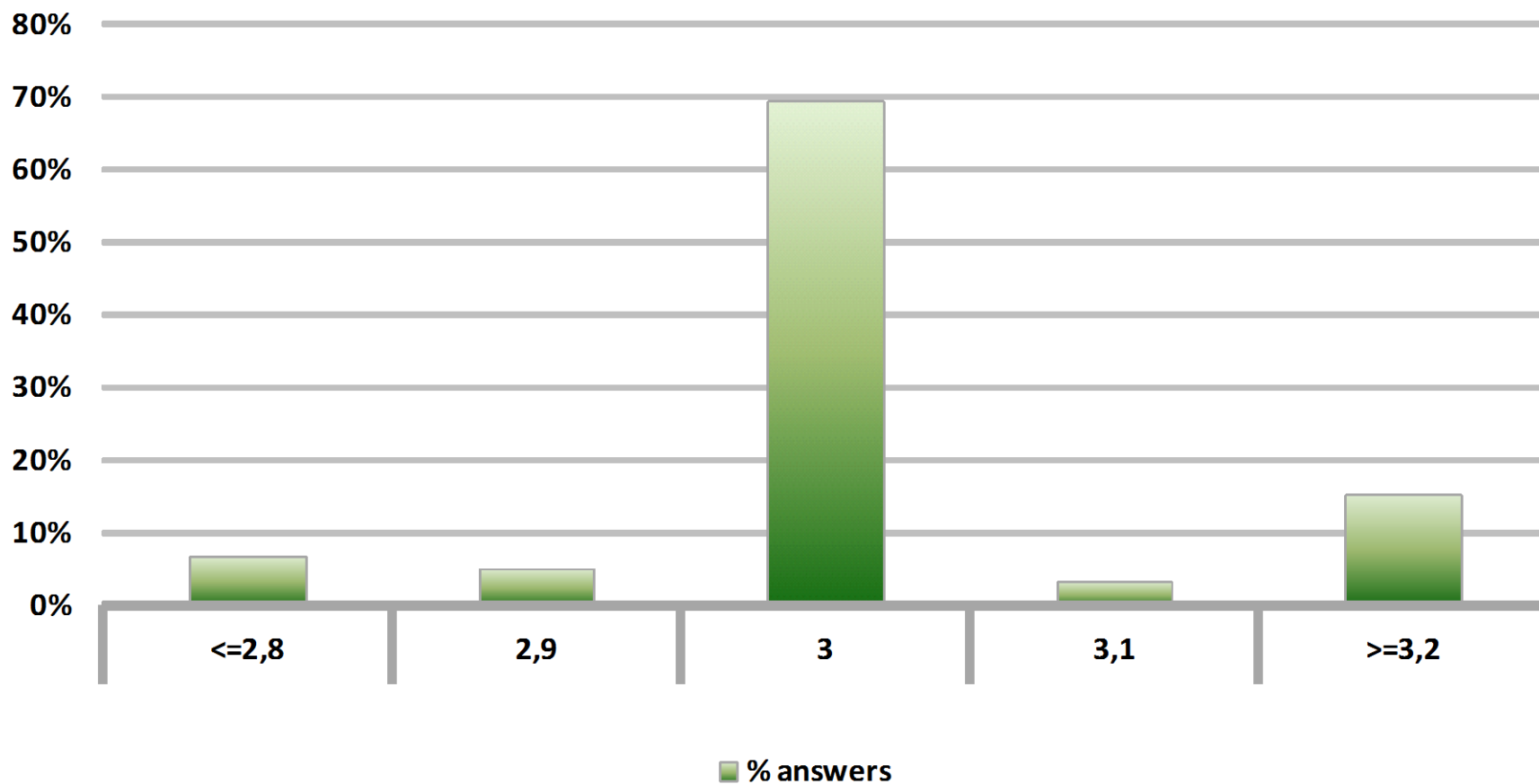


# Monthly Survey Expectations

## October 2012

### Inflation in twenty three months (12-month change)

Answers: 59



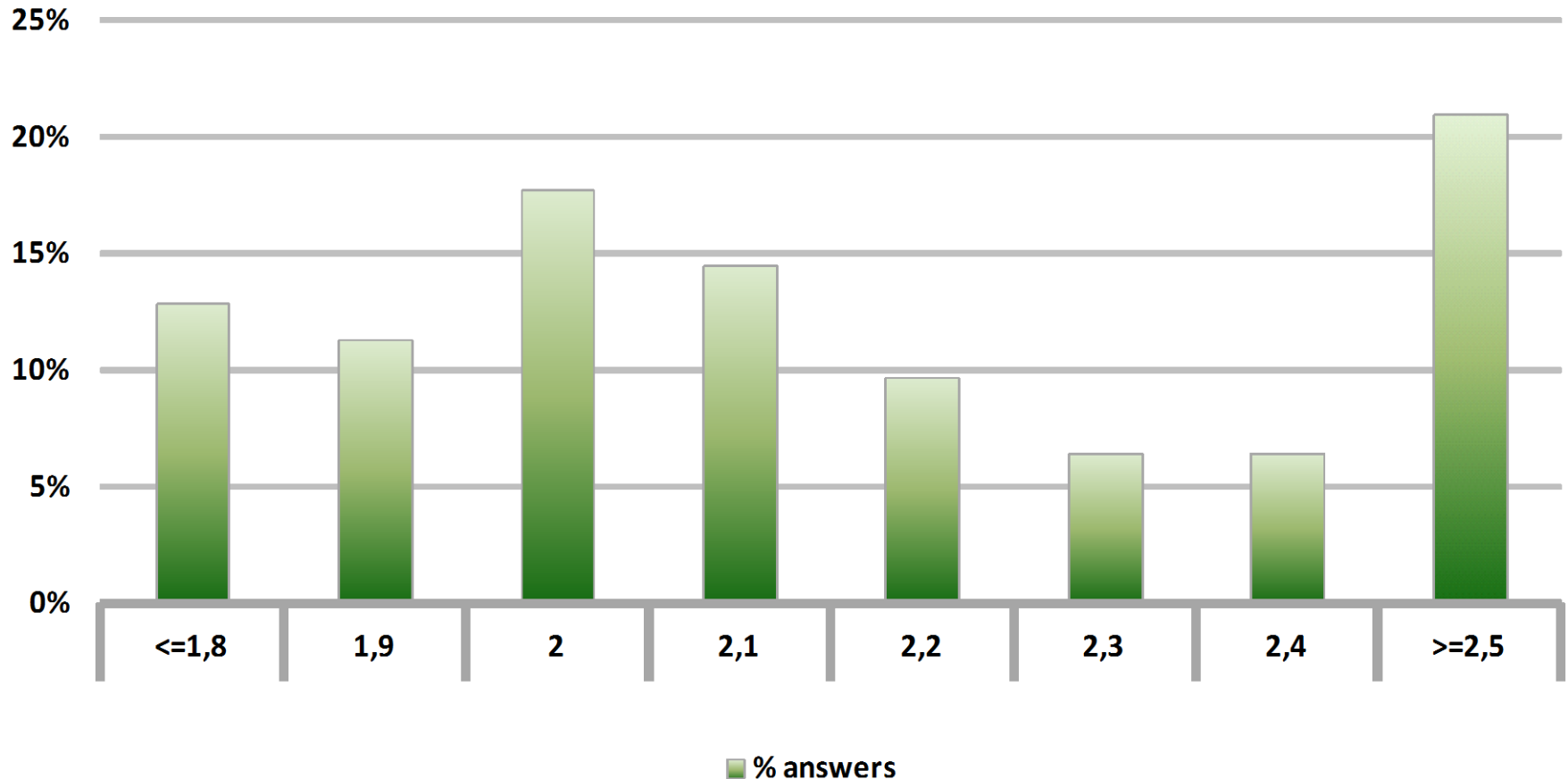


# Monthly Survey Expectations

## October 2012

### Inflation december 2012 (12-month change)

Answers: 62



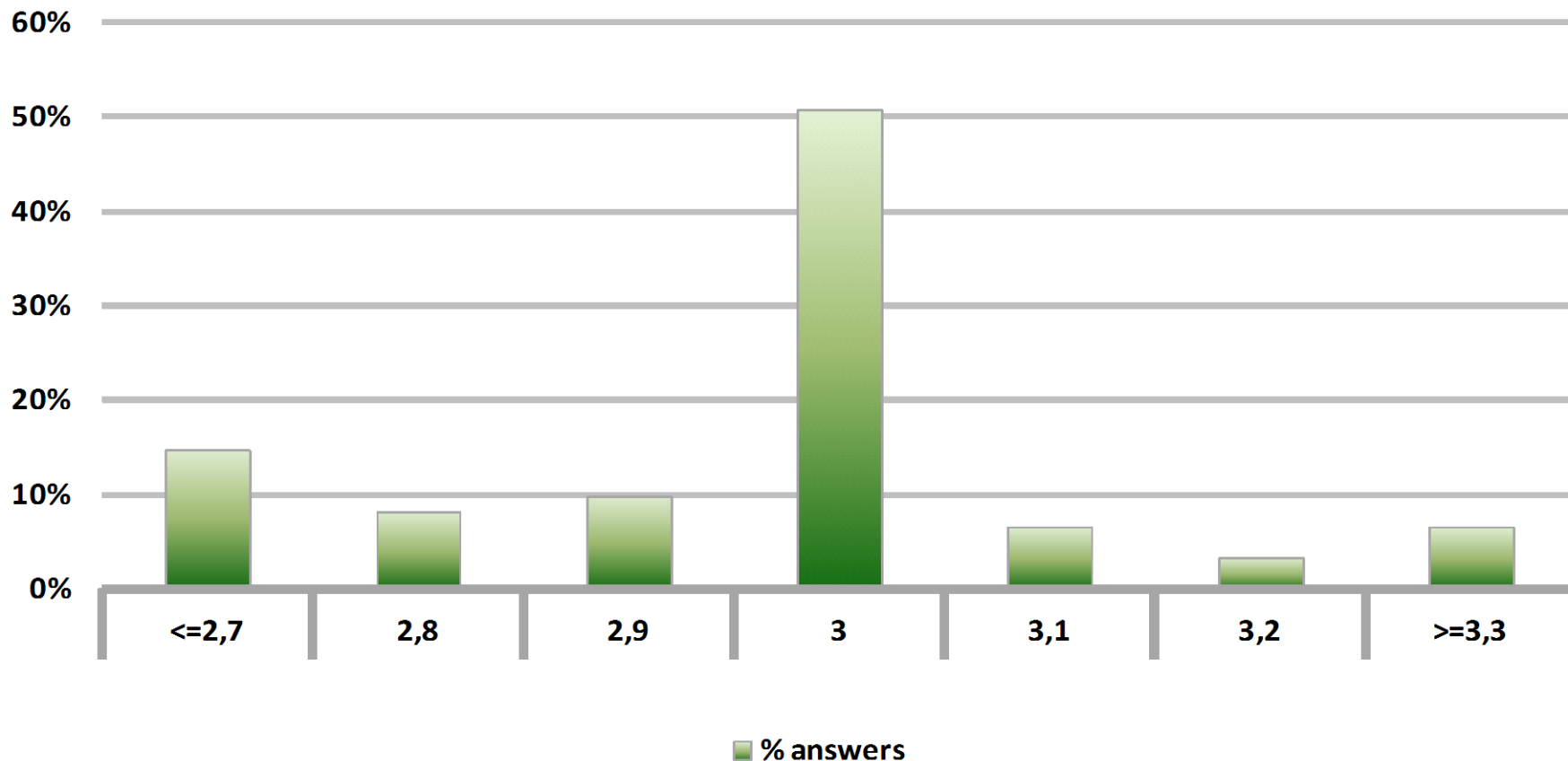


# Monthly Survey Expectations

## October 2012

### Inflation december 2013 (12-month change)

Answers: 61



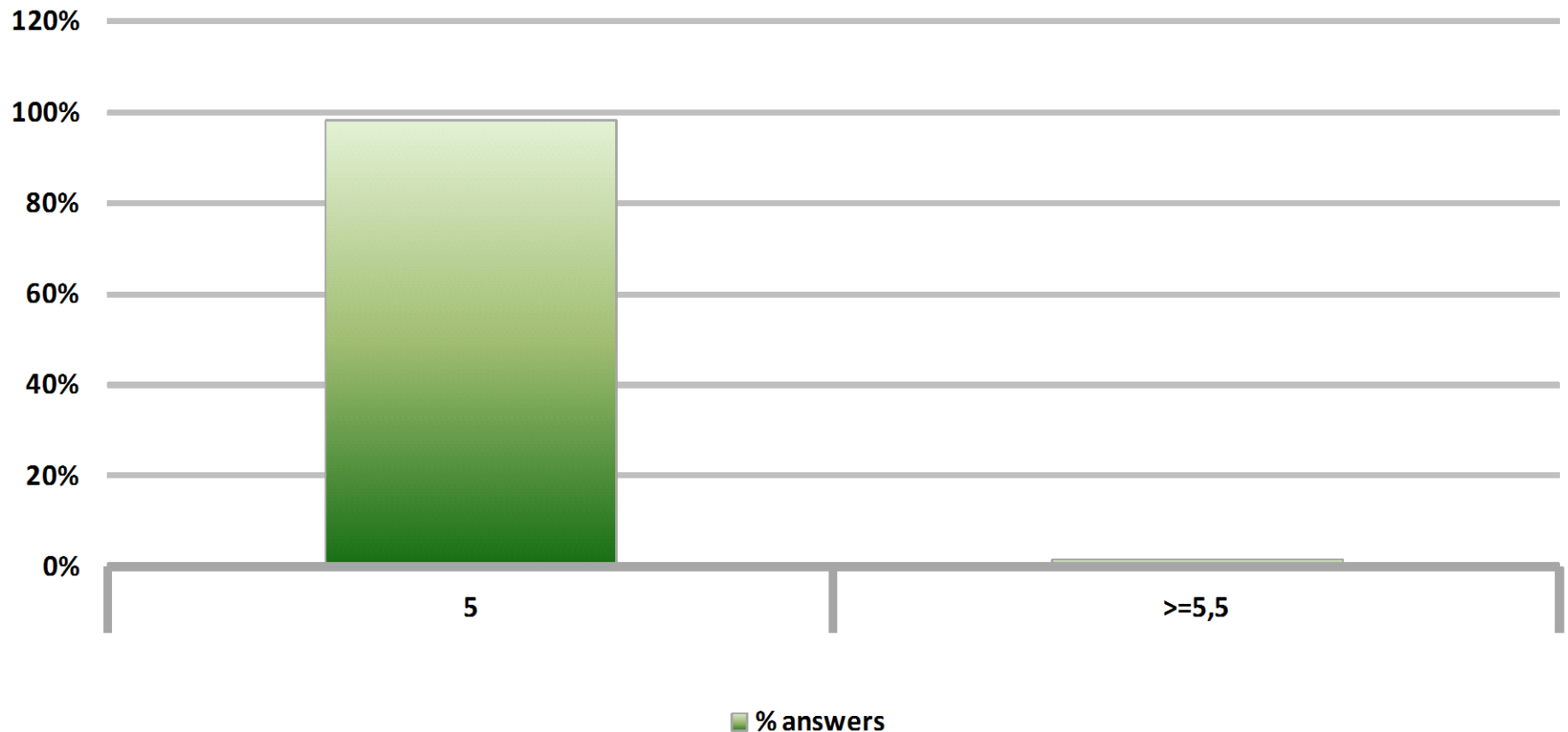


# Monthly Survey Expectations

## October 2012

### Monetary Policy rate target current month

Answers: 62





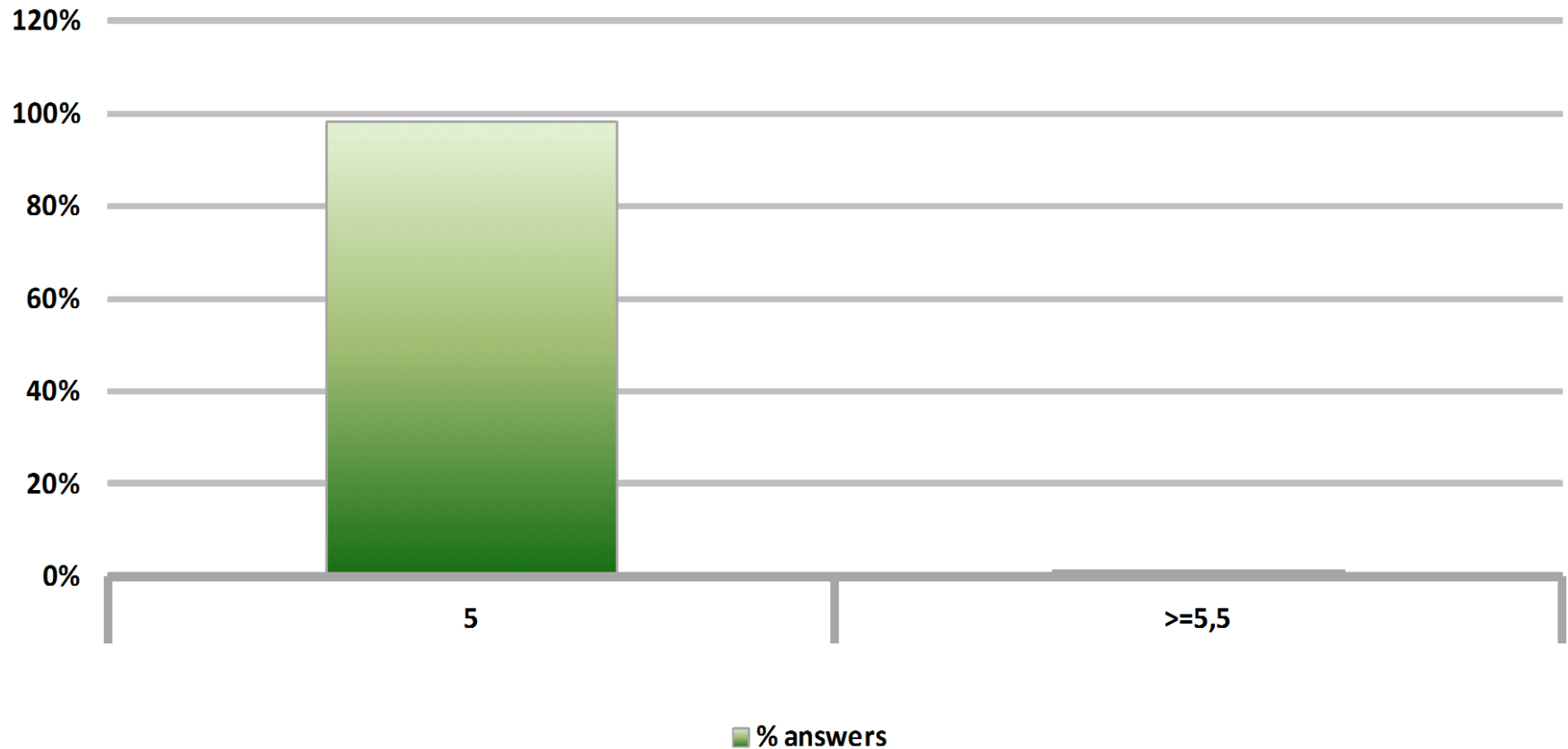


# Monthly Survey Expectations

## October 2012

### Monetary Policy rate target next month

Answers: 62



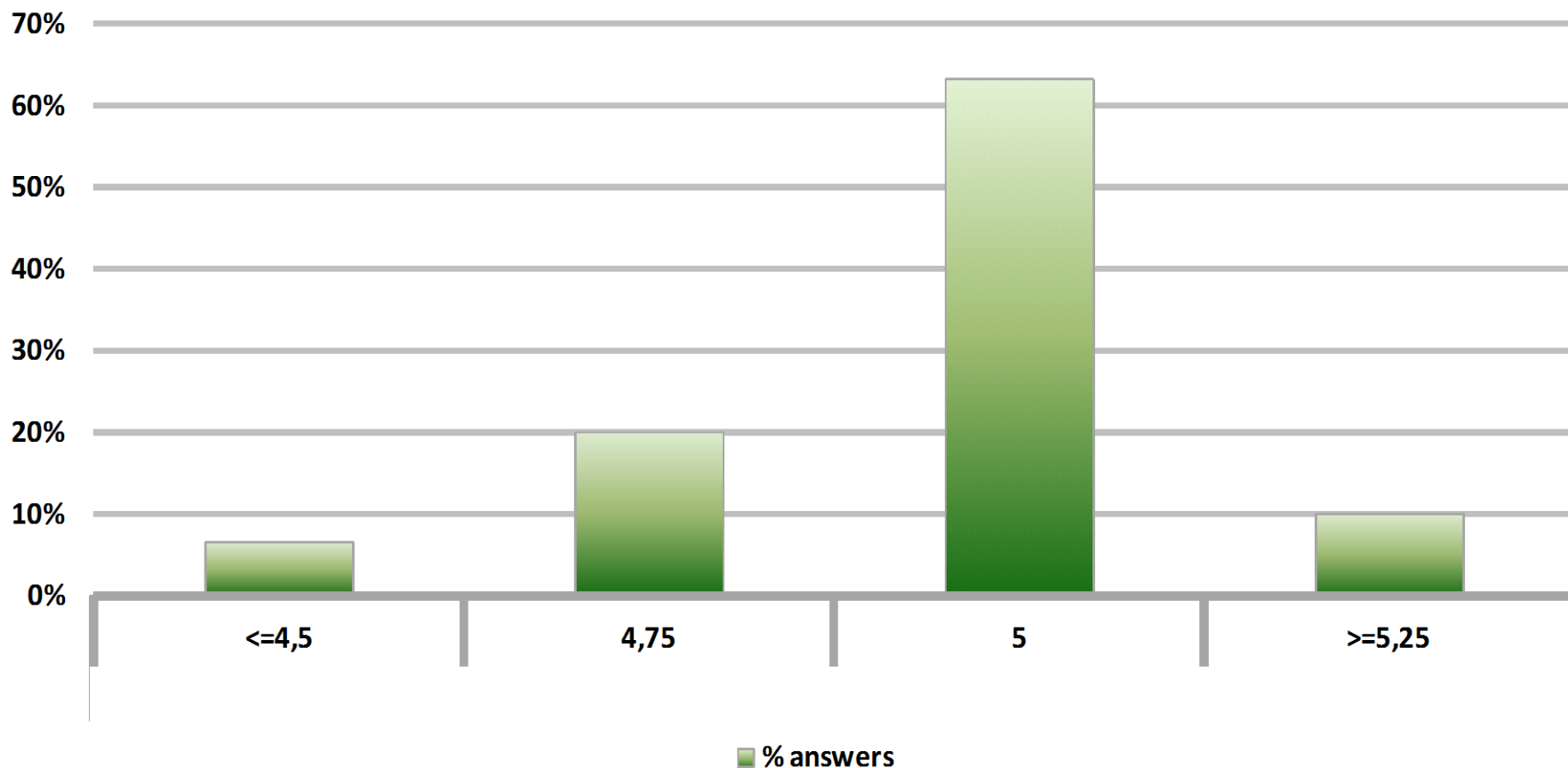


# Monthly Survey Expectations

## October 2012

### Monetary Policy rate target In five months

Answers: 60



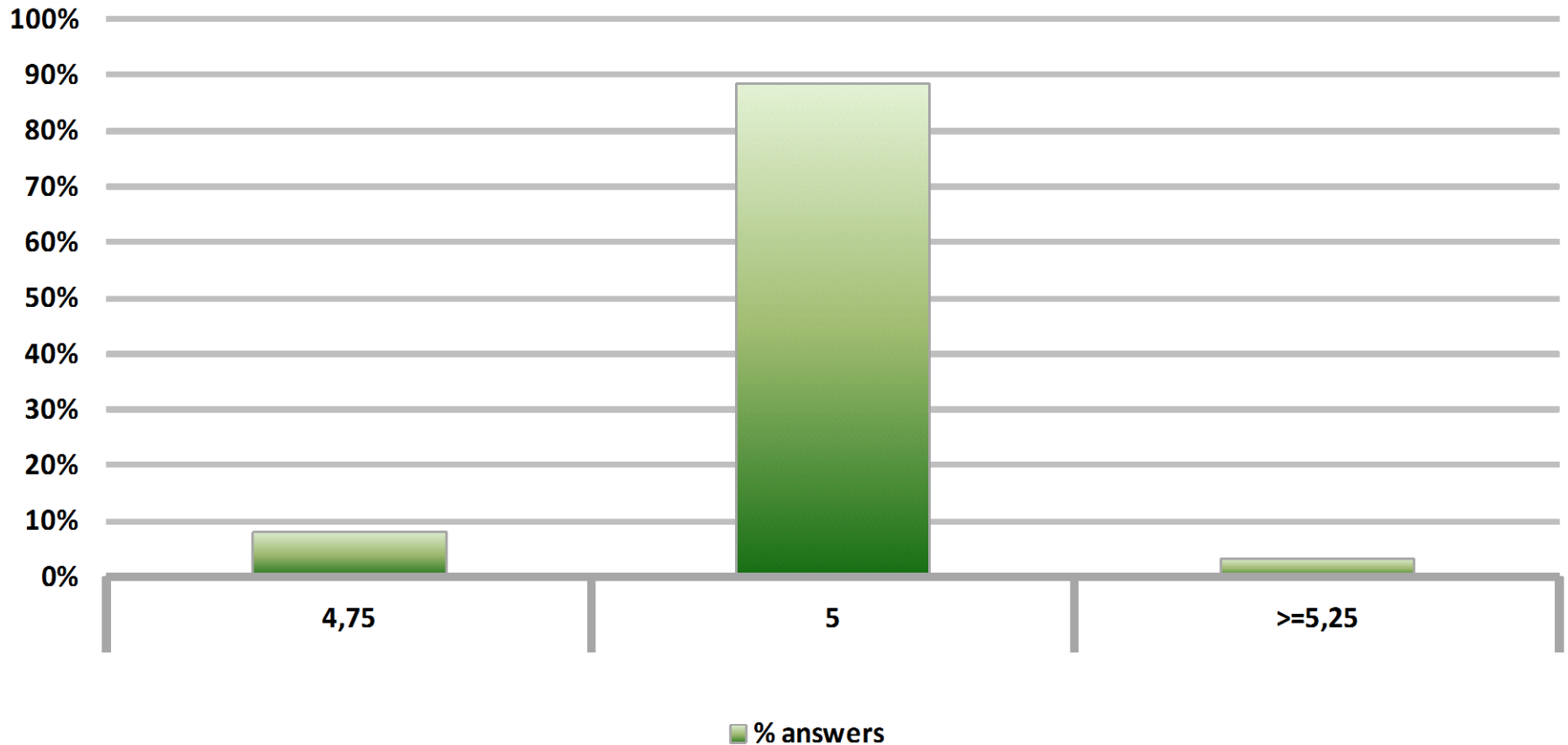


# Monthly Survey Expectations

## October 2012

### Monetary Policy rate target december 2012

Answers: 62



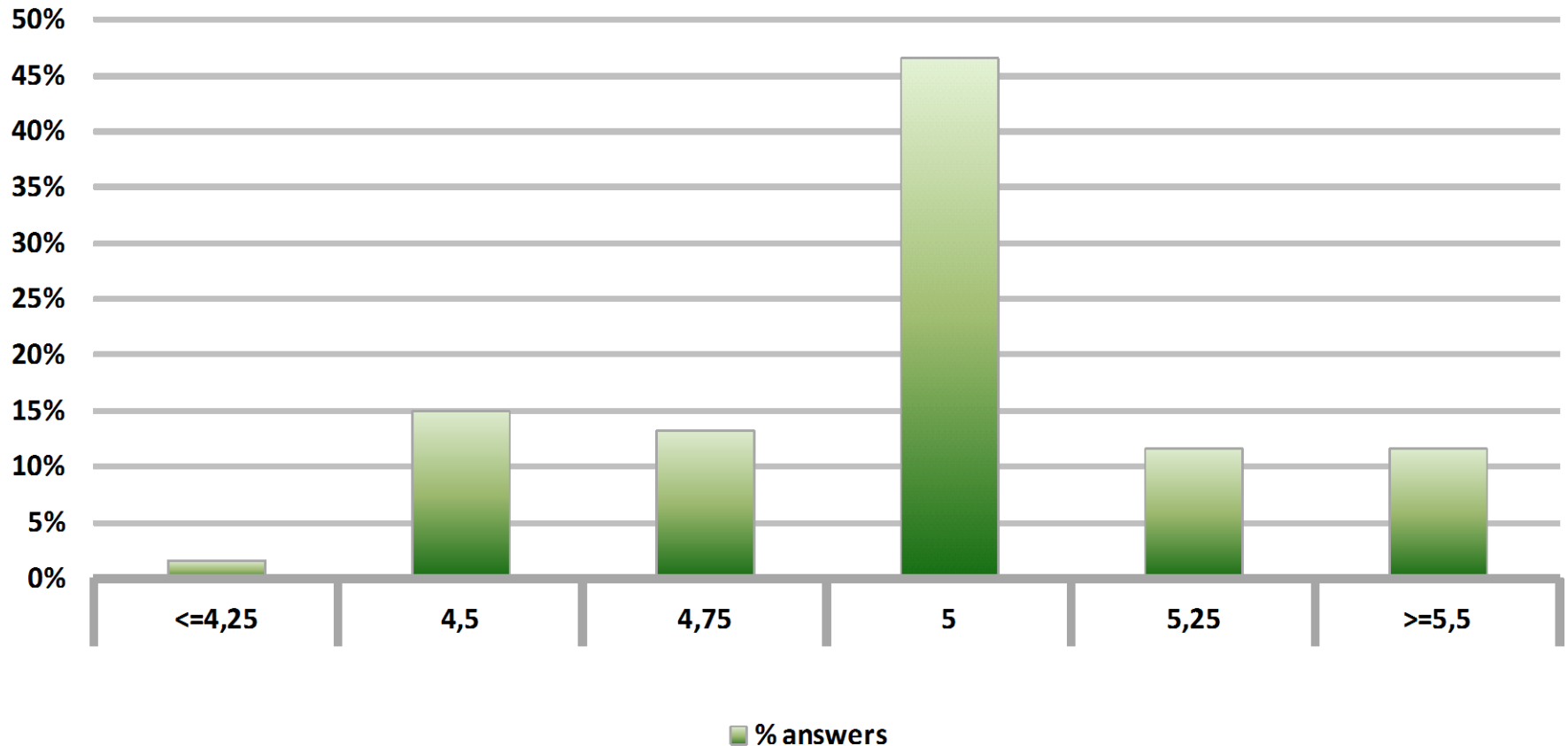


# Monthly Survey Expectations

## October 2012

### Monetary Policy rate target in eleven months

Answers: 60



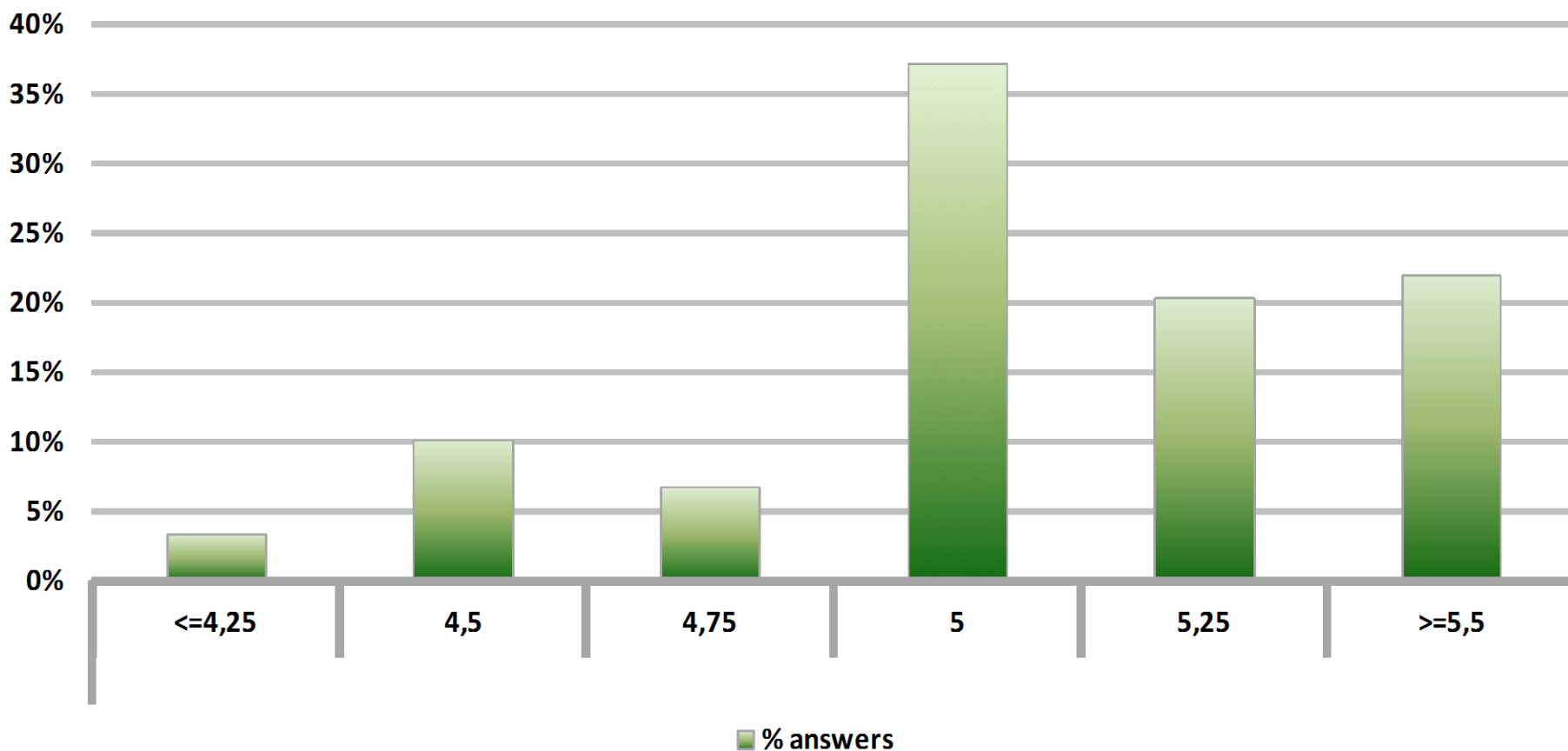


# Monthly Survey Expectations

## October 2012

### Monetary Policy rate target in seventeen months

Answers: 59



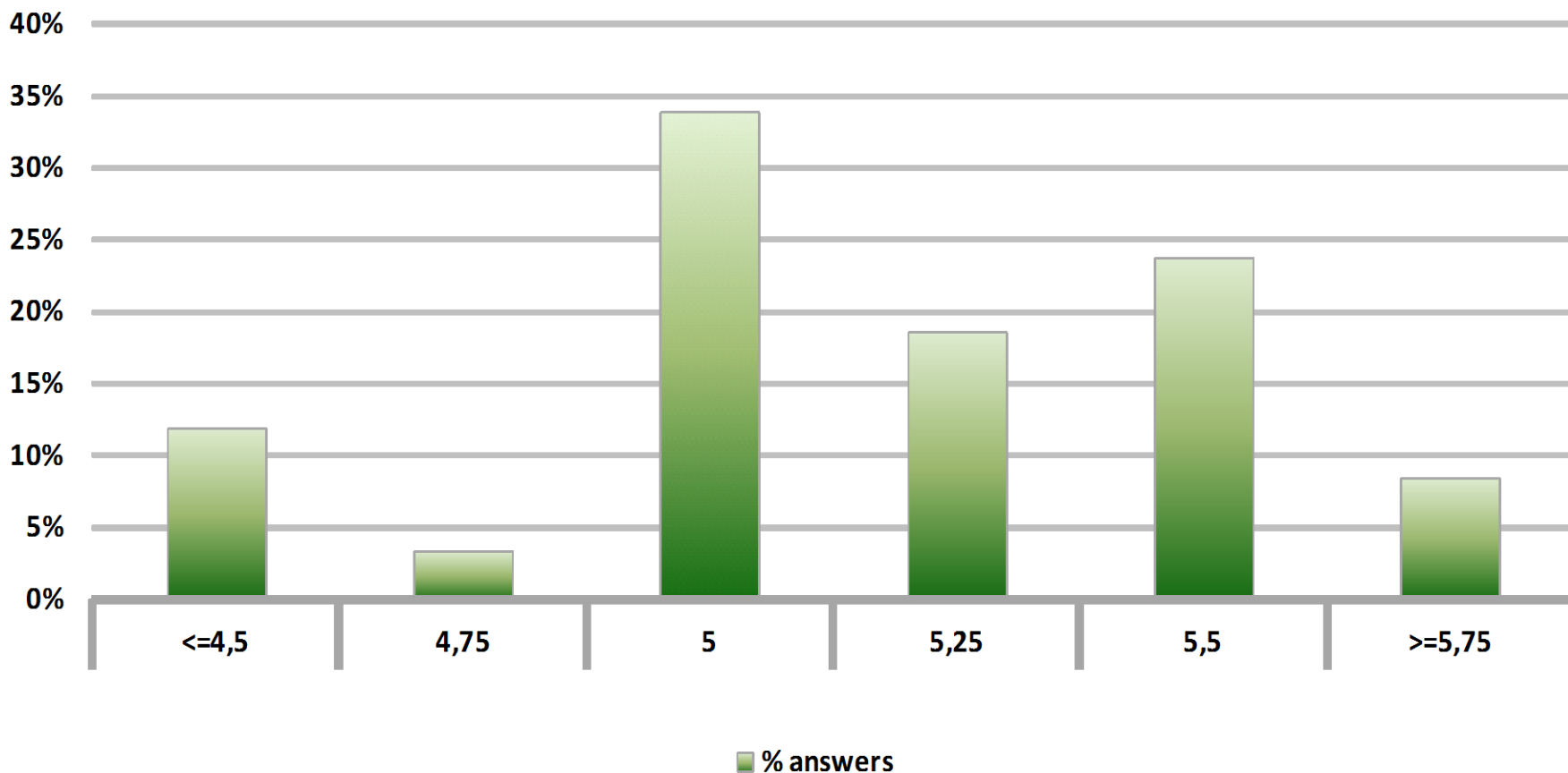


# Monthly Survey Expectations

## October 2012

### Monetary Policy rate target in twenty three months

Answers: 59



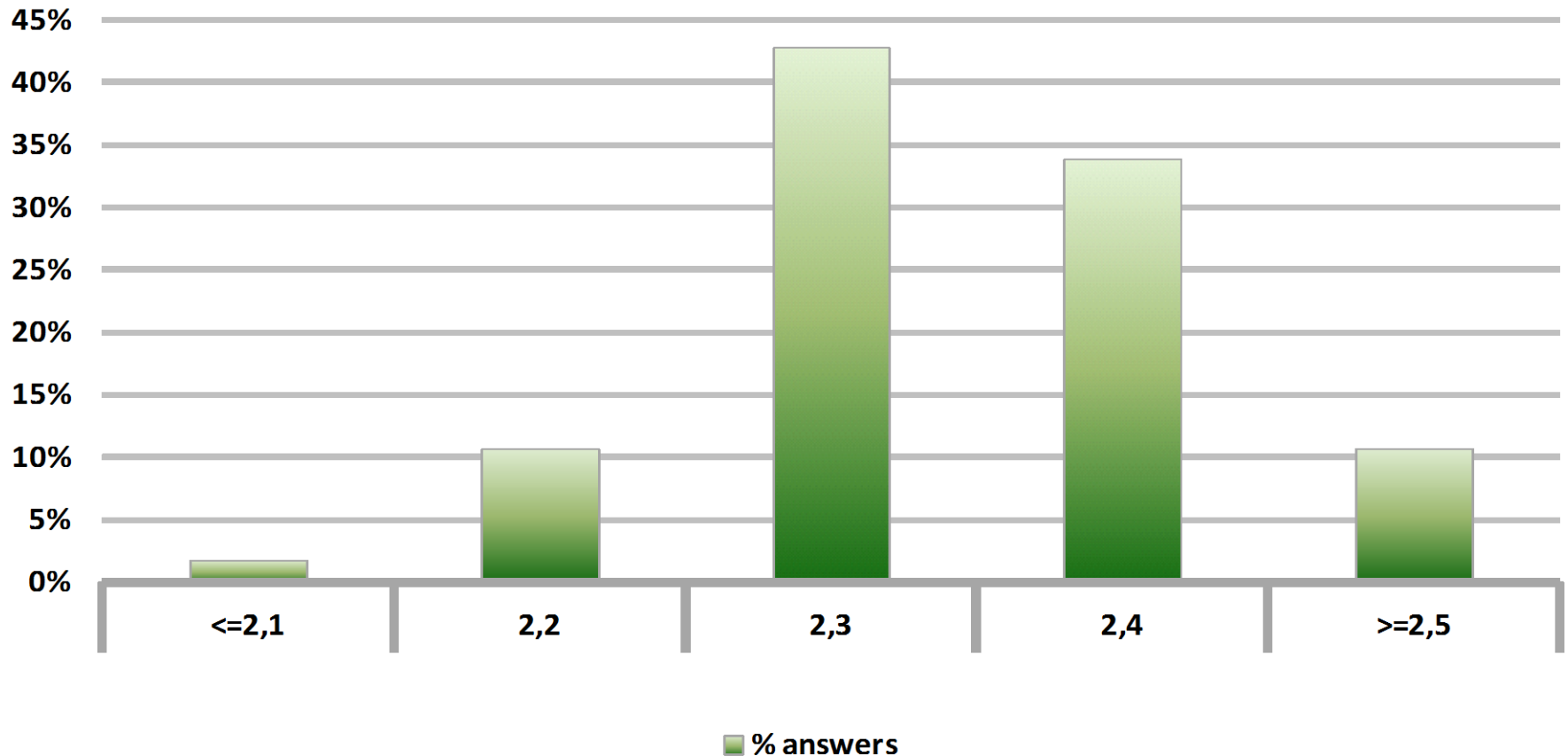


# Monthly Survey Expectations

## October 2012

### 5-Year BCU In two months

Answers: 56



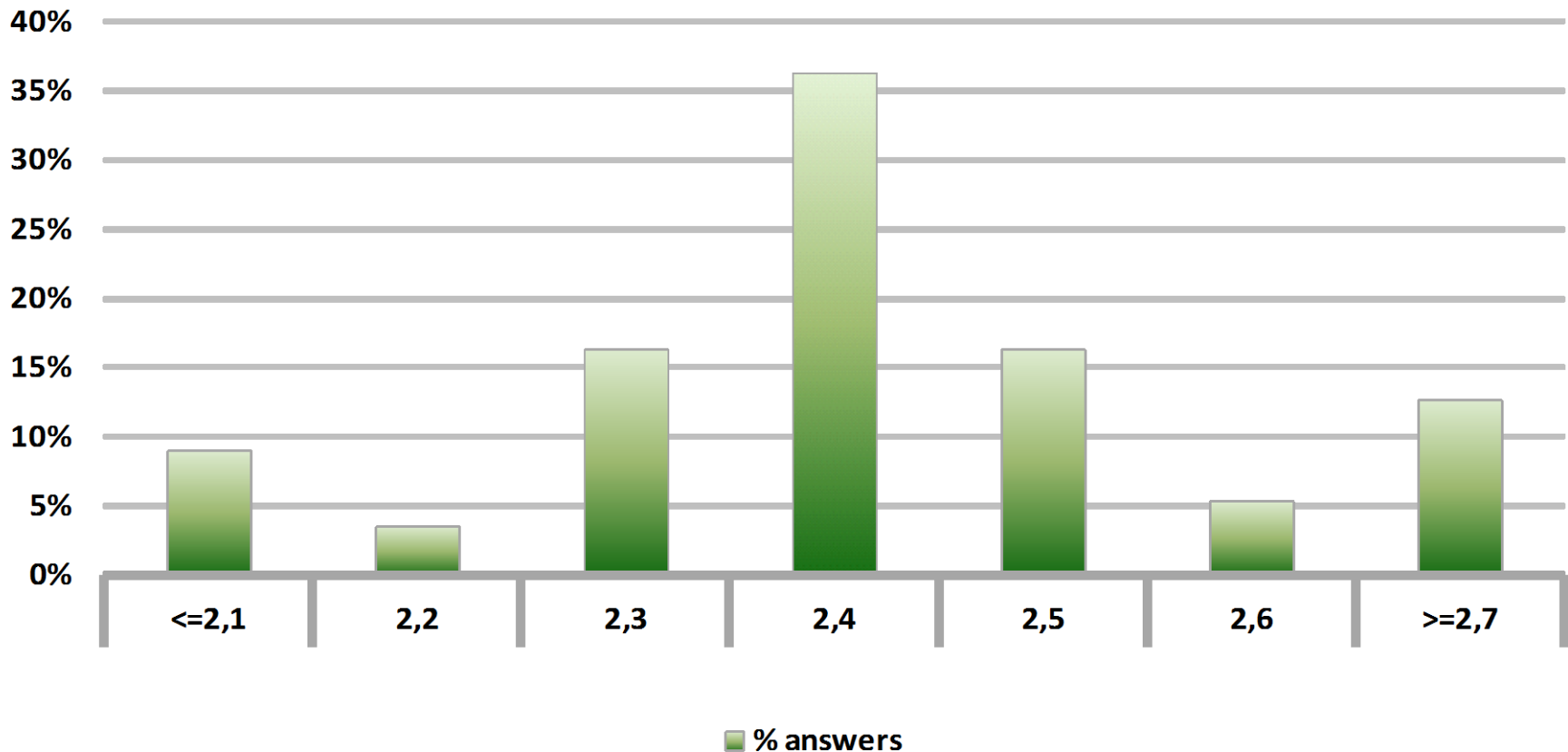


# Monthly Survey Expectations

## October 2012

### 5-Year BCU in eleven months

Answers: 55





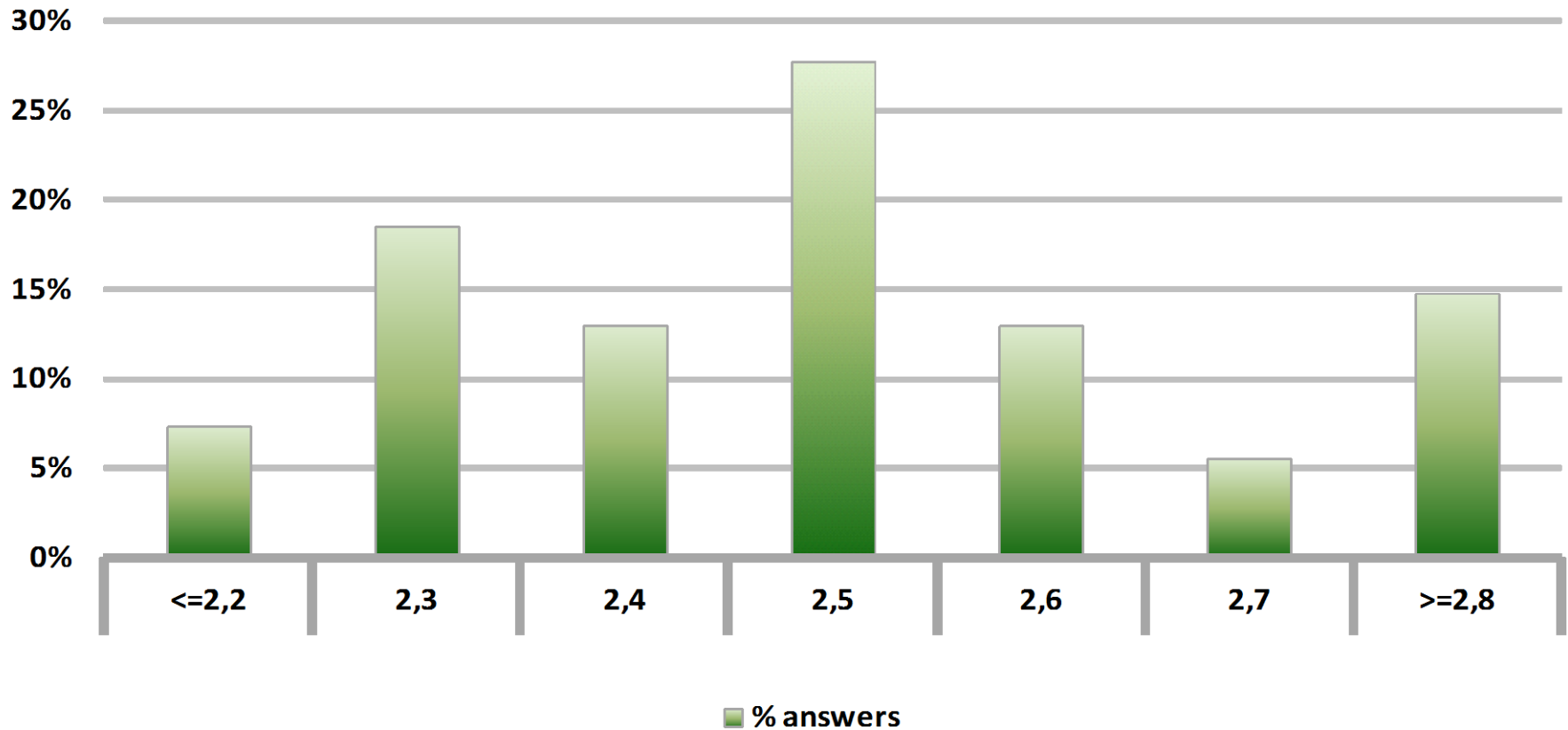


# Monthly Survey Expectations

## October 2012

### 5-Year BCU in twenty three months forward

Answers: 54



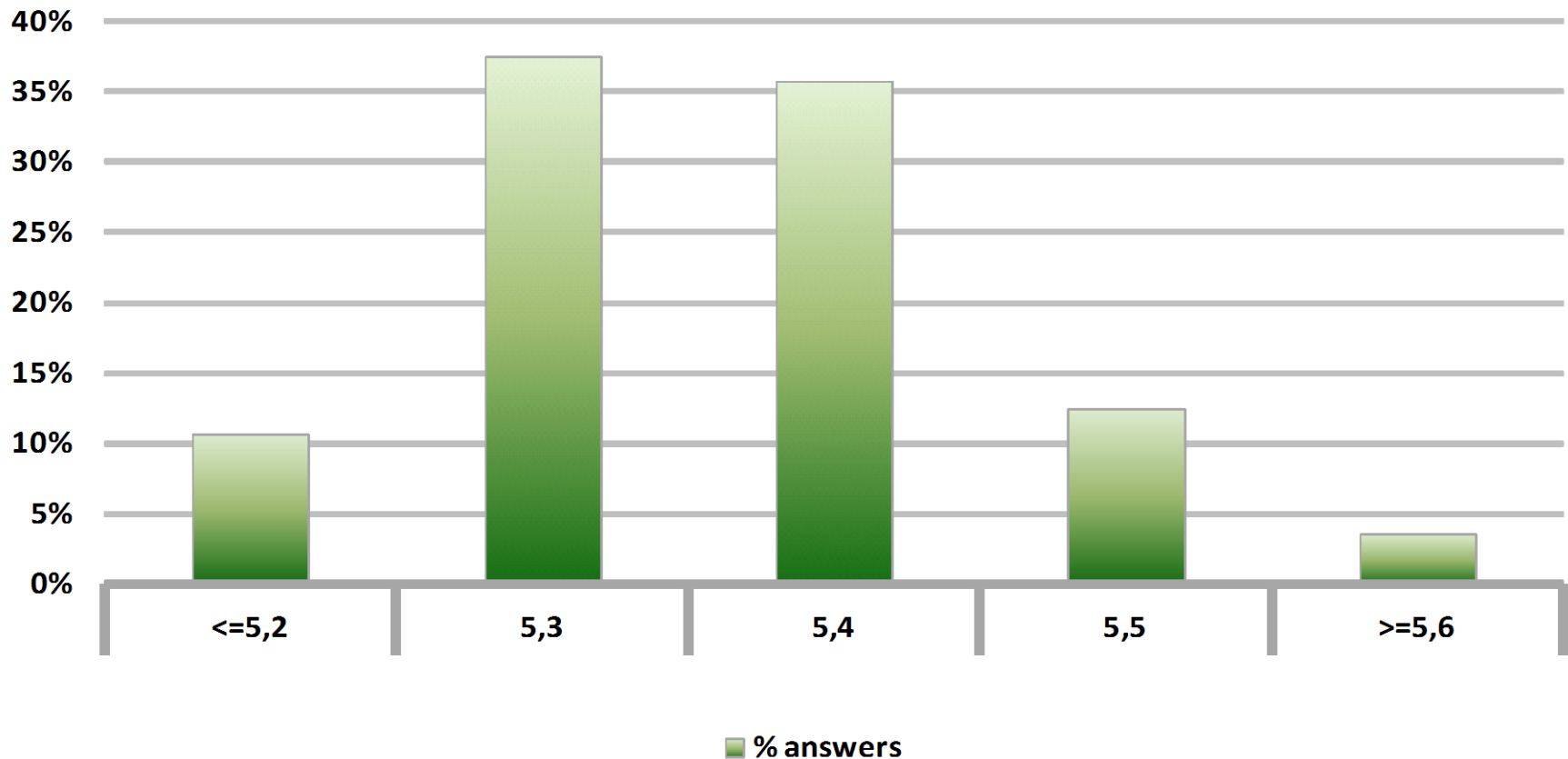


# Monthly Survey Expectations

## October 2012

### 5-Year BCP in two months

Answers: 56



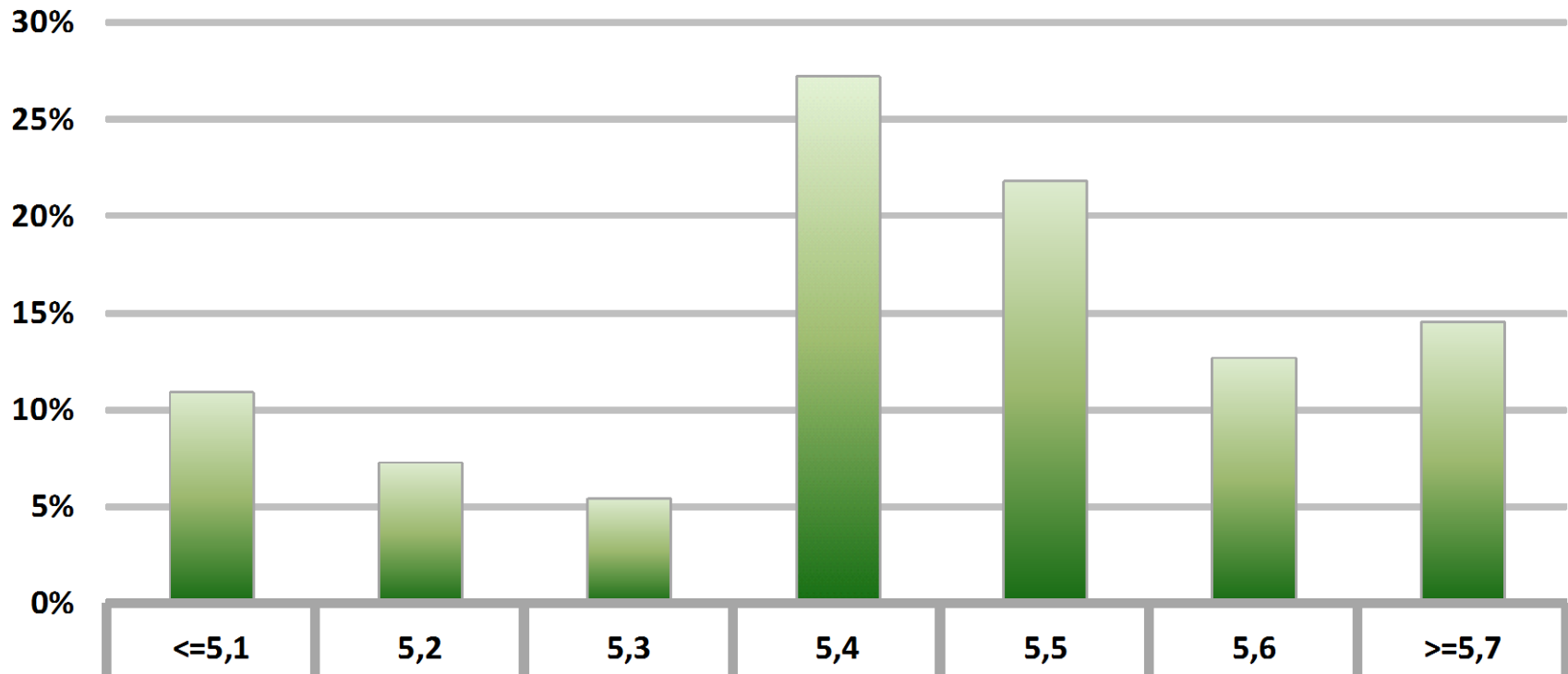


# Monthly Survey Expectations

## October 2012

### 5-Year BCP in eleven months

Answers: 55



■ % answers

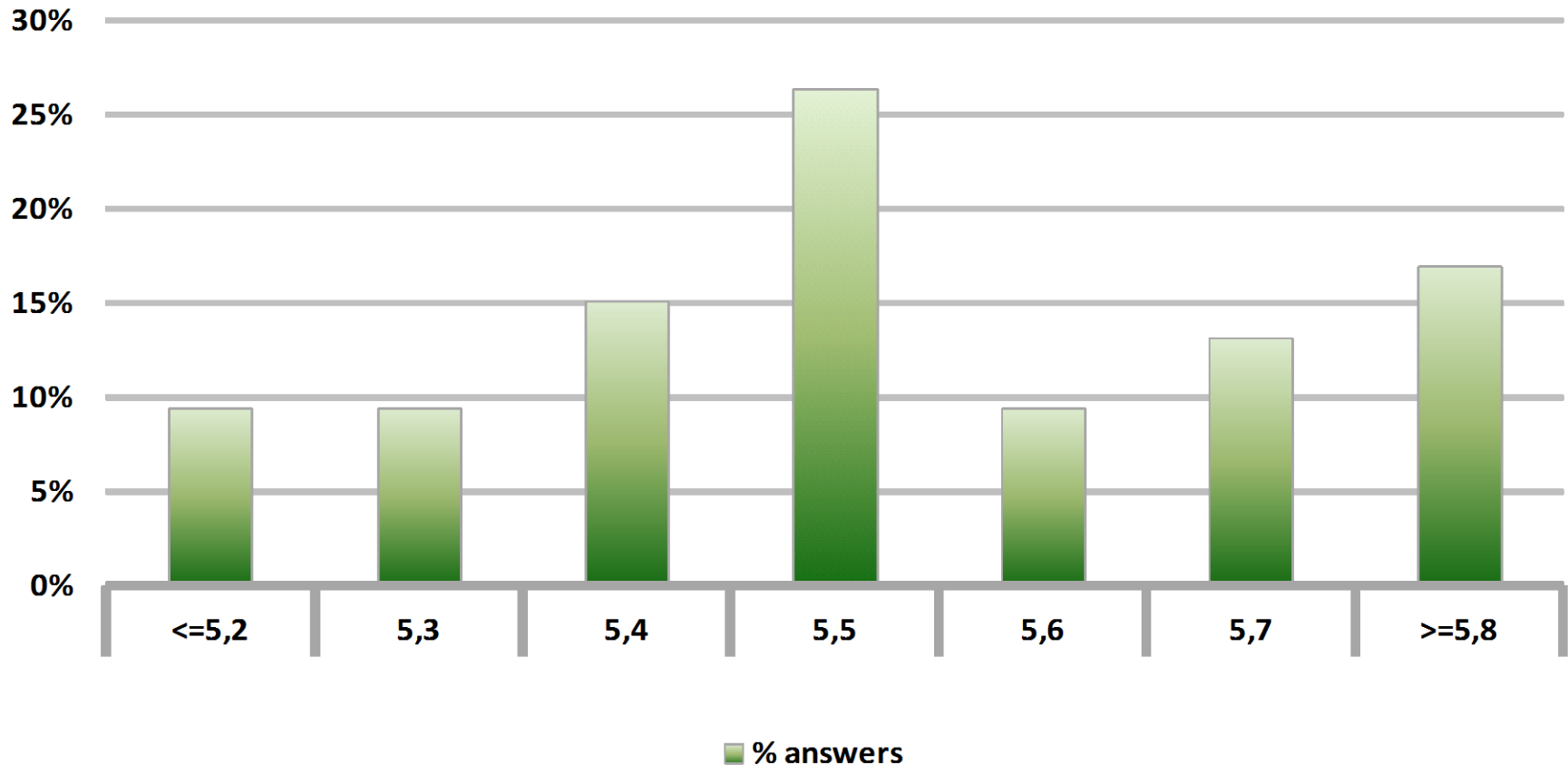


# Monthly Survey Expectations

## October 2012

### 5-Year BCP in twenty three months forward

Answers: 53



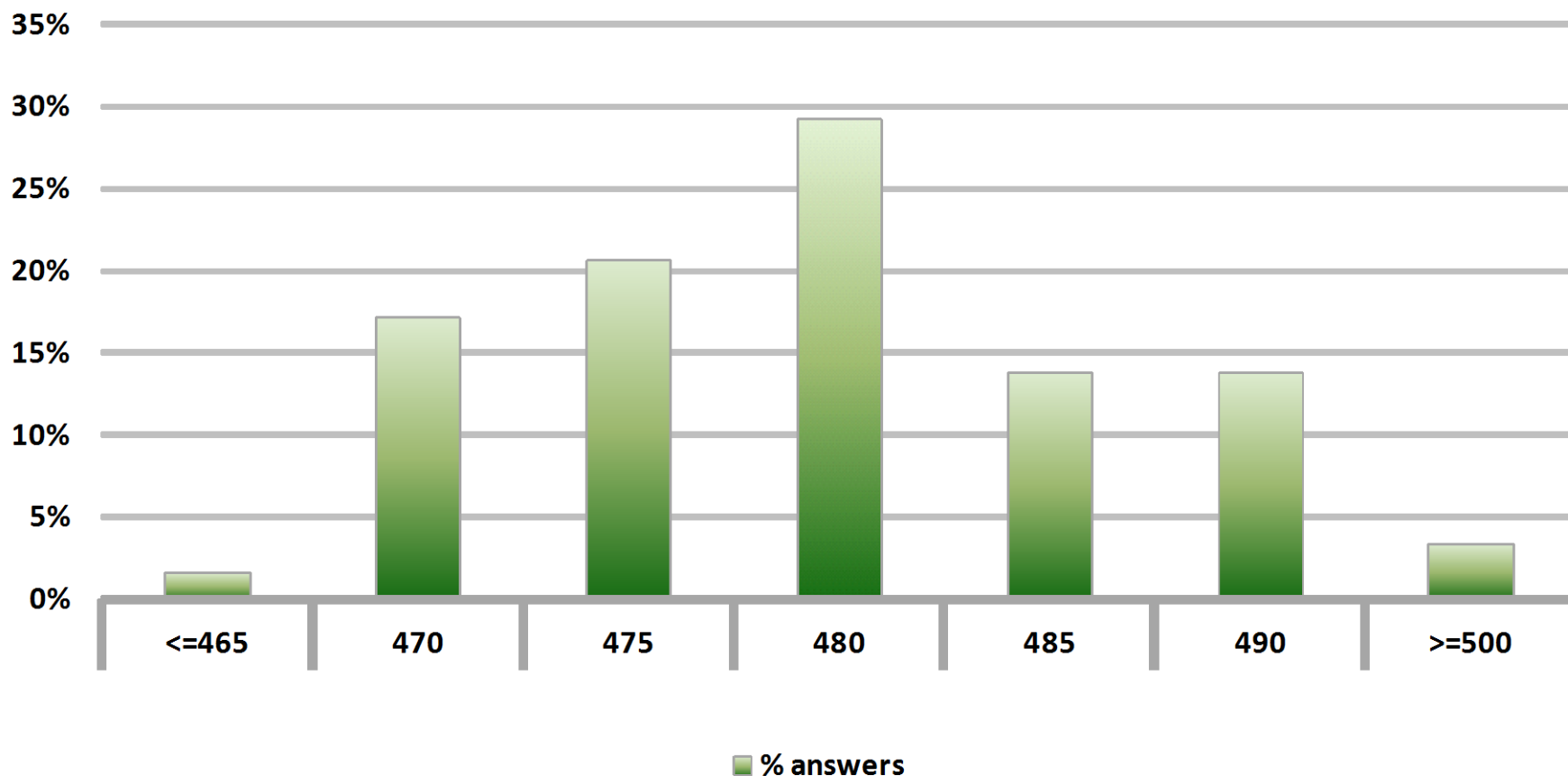


# Monthly Survey Expectations

## October 2012

Exchange Rate in two months (CH \$ per US\$)

Answers: 58



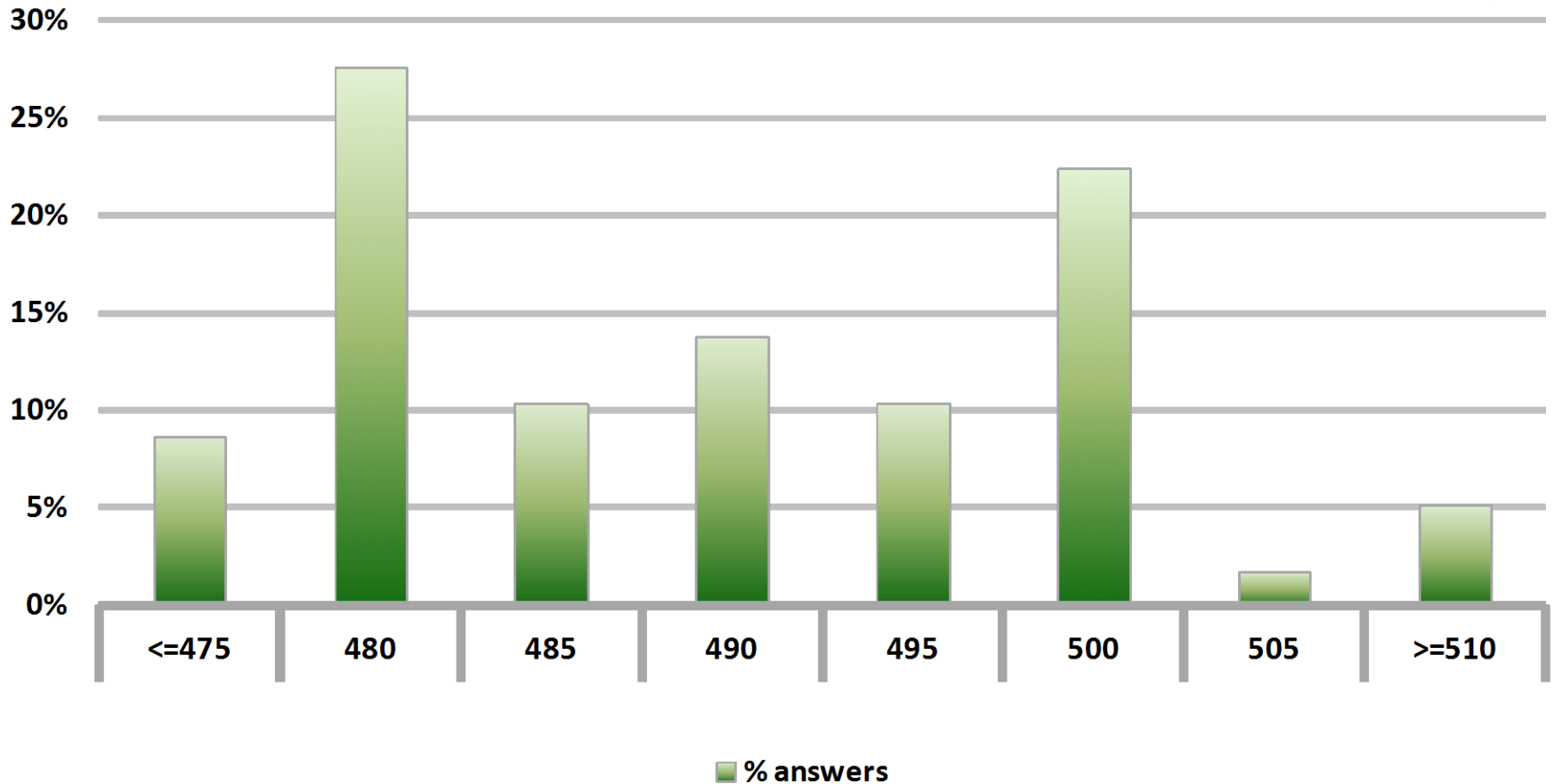


# Monthly Survey Expectations

## October 2012

**Exchange Rate in eleven months (CH \$ per US\$)**

**Answers: 58**



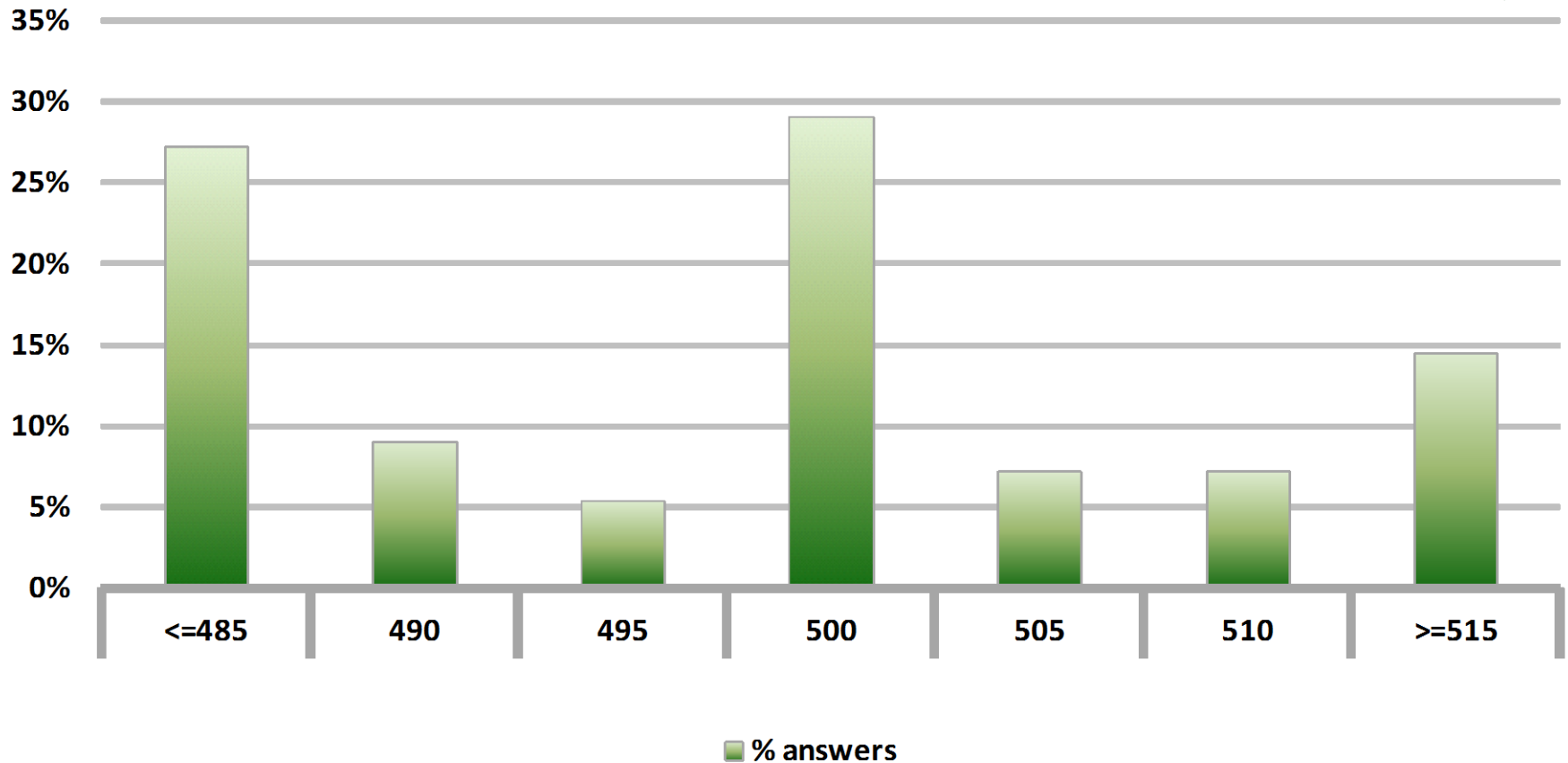


# Monthly Survey Expectations

## October 2012

**Exchange Rate in twenty three months forward (CH \$ per US\$)**

**Answers: 55**



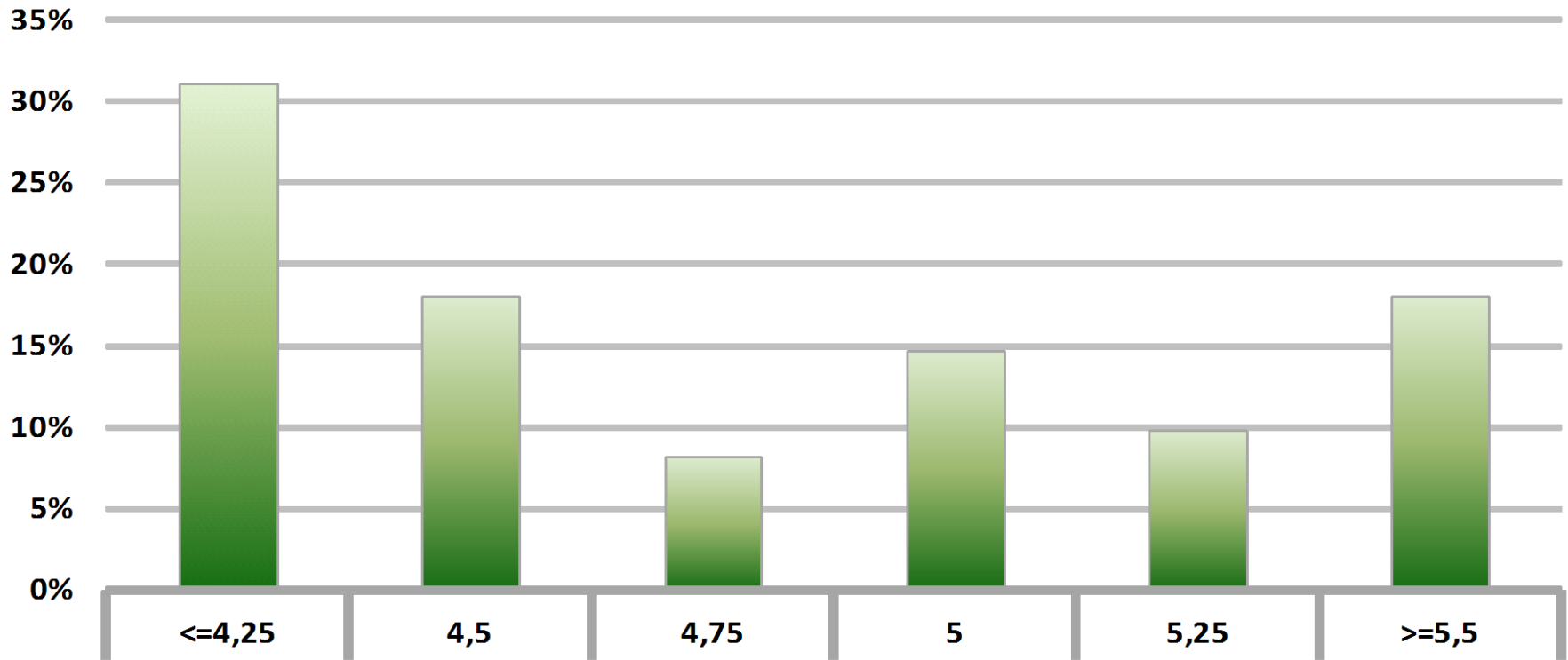


# Monthly Survey Expectations

## October 2012

### IMACEC (Monthly Activity Index) one month ago

Answers: 61



■ % answers



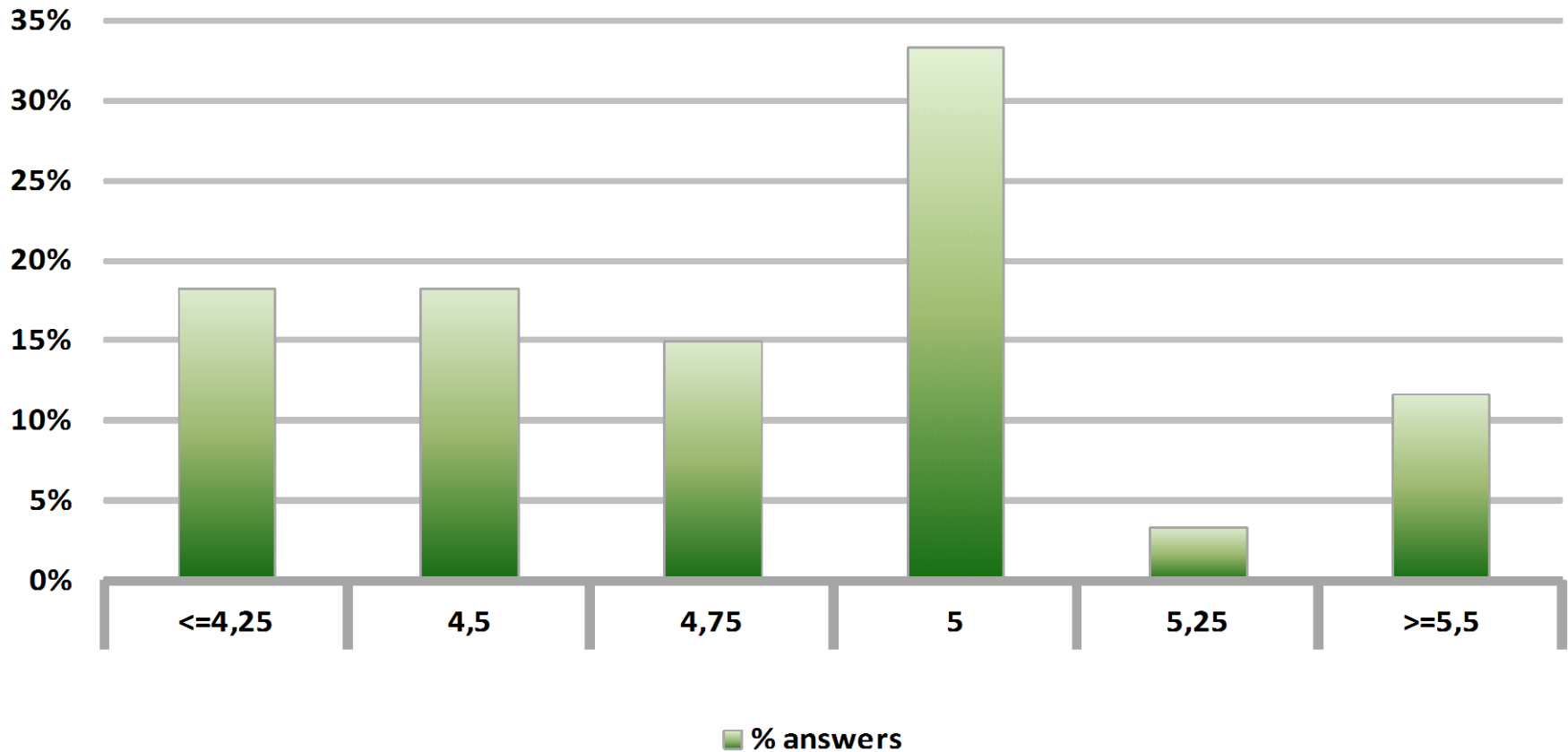


# Monthly Survey Expectations

## October 2012

### GDP within calendar quarter of the survey

Answers: 60



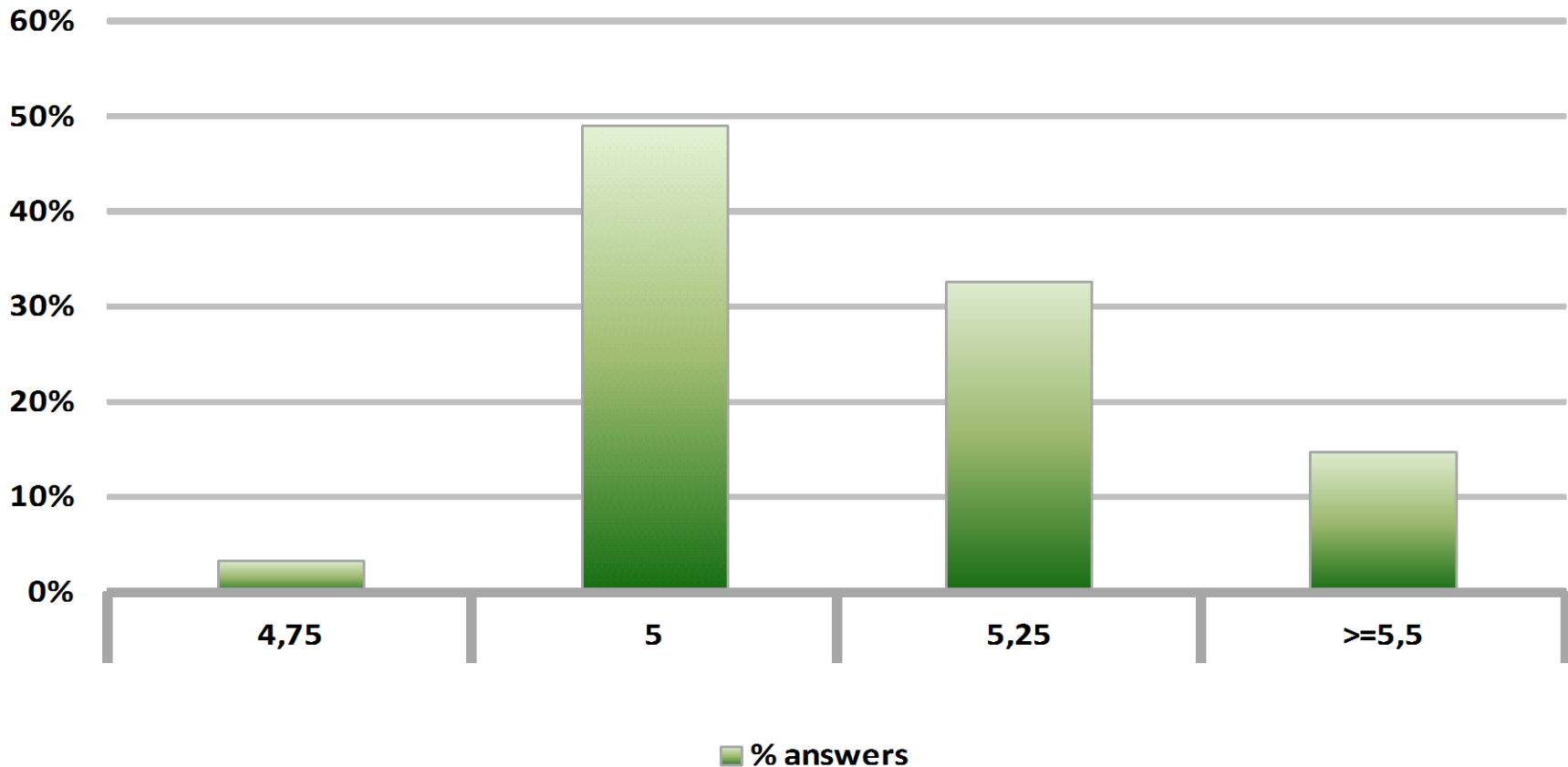


# Monthly Survey Expectations

## October 2012

### GDP year 2012 (12-month change)

Answers: 61



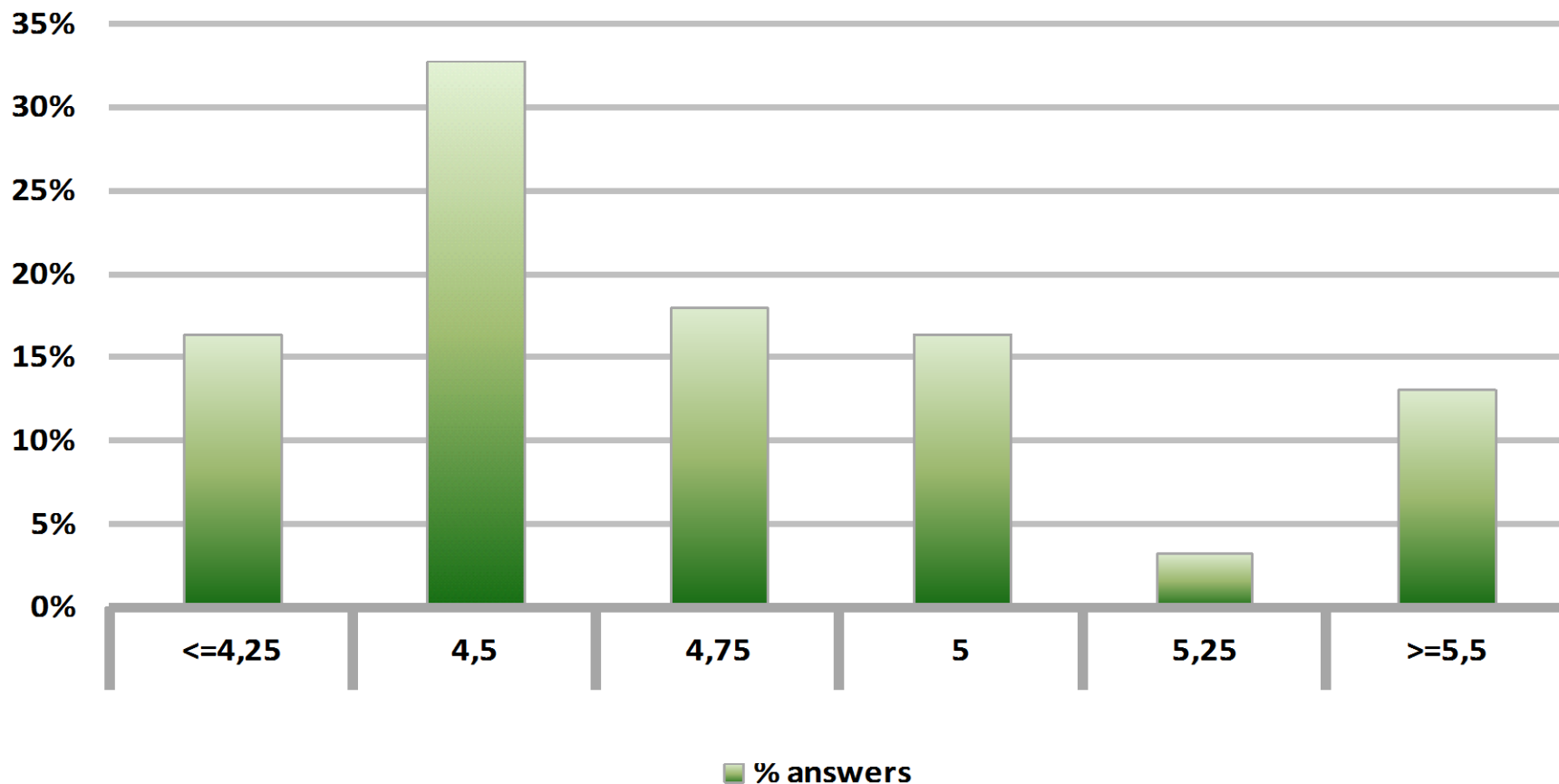


# Monthly Survey Expectations

## October 2012

### GDP year 2013 (12-month change)

Answers: 61





# Monthly Survey Expectations

## October 2012

### GDP year 2014 (12-month change)

Answers: 57

