

MONTHLY SURVEY ON EXPECTATIONS September 2013

		Survey September 2013			
		Median	rank		Answers
			decile 1	decile 9	
Sent on September 3th, 2013					
Deadline for responses: September 9, 2013					
Inflation (% change)					
Current month (monthly change)		0,5	0,3	0,7	60
Next month (monthly change)		0,3	0,2	0,4	60
In eleven months (12-month change)		2,9	2,5	3,1	58
In twenty three months (12-month change)		3,0	2,9	3,1	56
December 2013 (12-month change)		2,5	2,3	2,7	59
December 2014 (12-month change)		3,0	2,6	3,1	58
Monetary Policy rate target (%) (*)		Median	decile 1	decile 9	Answers
Current month		5,00	4,75	5,00	60
Next month		5,00	4,80	5,00	60
In five months		4,50	4,30	5,00	59
December 2013		4,75	4,50	5,00	60
In eleven months		4,50	4,00	5,00	59
In seventeen months		4,50	4,00	5,00	57
In twenty three months		4,75	4,20	5,30	57
5-Year BCU (%) (*)		Median	decile 1	decile 9	Answers
In two months		2,2	2,1	2,3	56
In eleven months		2,3	2,0	2,6	55
In twenty three months forward		2,4	2,0	2,7	52
5-Year BCP (%) (*)		Median	decile 1	decile 9	Answers
In two months		5,1	5,0	5,3	56
In eleven months		5,2	4,9	5,4	56
In twenty three months forward		5,3	4,8	5,7	54
Exchange Rate (CH \$ per US\$ 1) (*)		Median	decile 1	decile 9	Answers
In two months		513	505	520	58
In eleven months		520	509	535	58
In twenty three months forward		525	508	550	56
IMACEC (Monthly Activity Index)		Median	decile 1	decile 9	Answers
One month ago		4,1	3,5	5,0	58
GDP (12-month change)		Median	decile 1	decile 9	Answers
Within calendar quarter of the survey		4,5	4,0	4,8	60
Year 2013		4,3	4,1	4,7	60
Year 2014		4,5	3,8	4,6	59
Year 2015		4,5	4,0	5,0	57

(*) End of the month

Monthly survey of selected academics, consultants, and executives or advisors of financial institutions and corporations. It is completed the day after the publication of the CPI or IMACEC (Monthly activity index), whichever the last known, and it is published the day after its reception, at 8:30 hrs. approximately (www.bcentral.cl, in "Economic Statistics", under "Economic Expectations Survey").

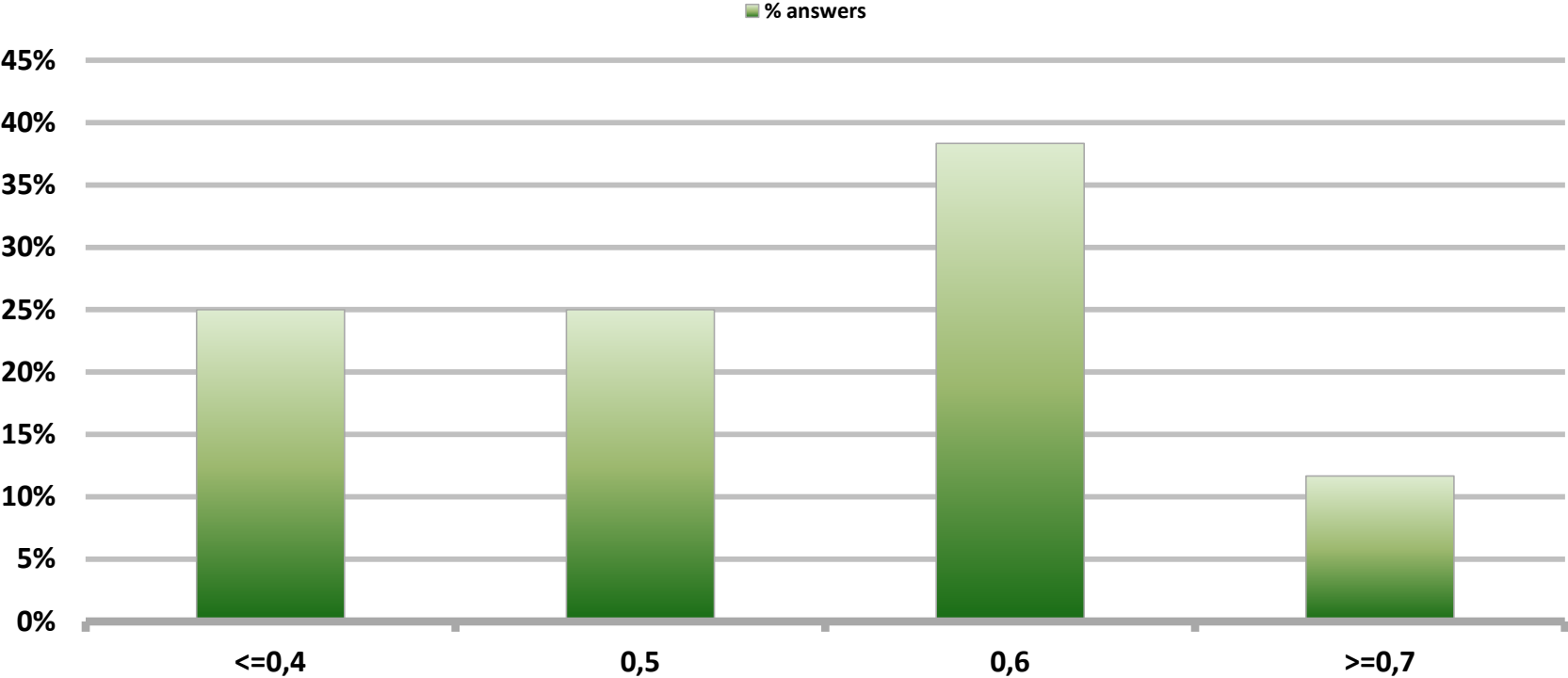
The sample size of surveyed analysts was increased since April 2011.

Monthly Survey On Expectations September 2013

Inflation current month (monthly change)

Answers: 60

Median: 0,525%

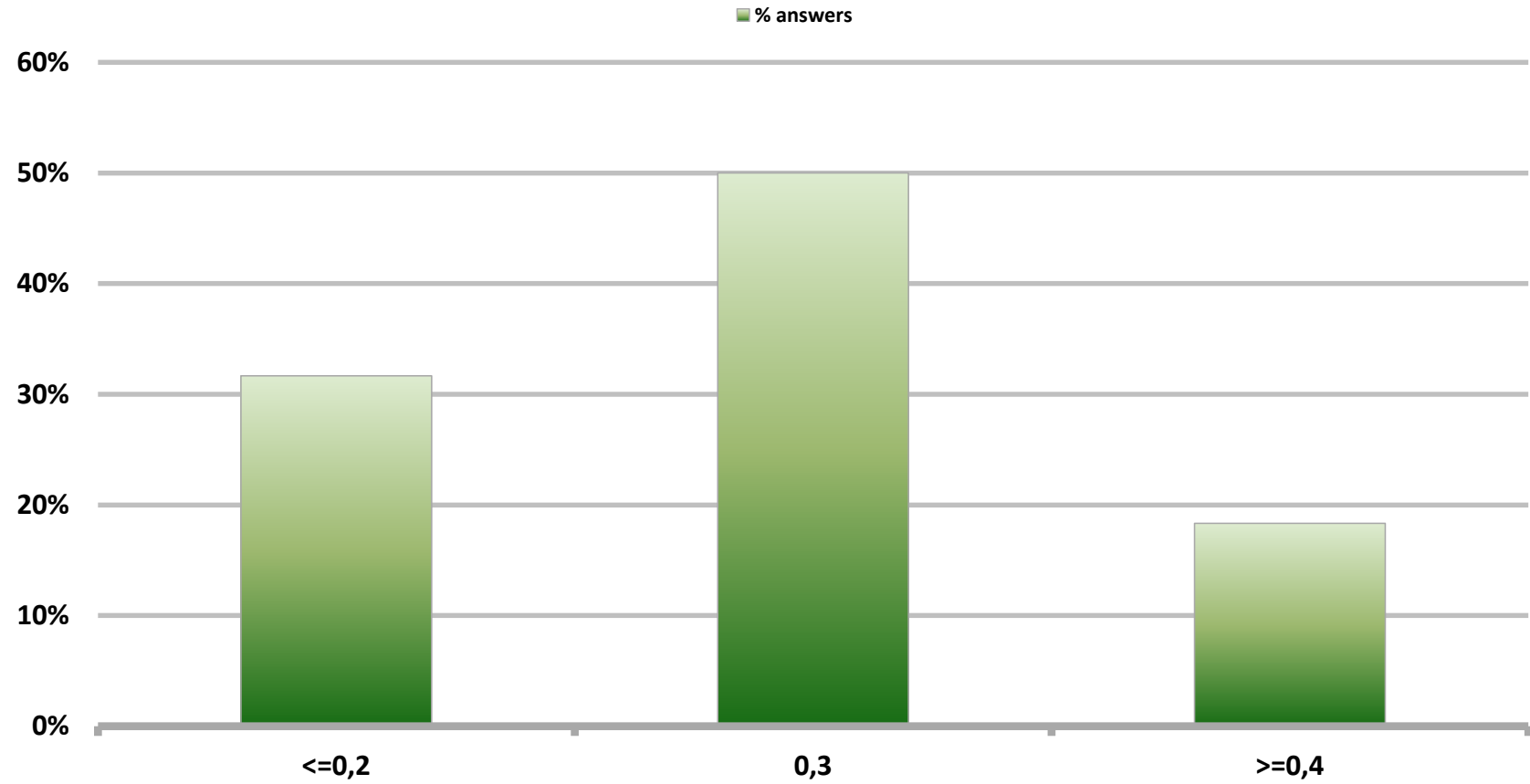


Monthly Survey On Expectations September 2013

Inflation next month (monthly change)

Answers: 60

Median: 0,3%

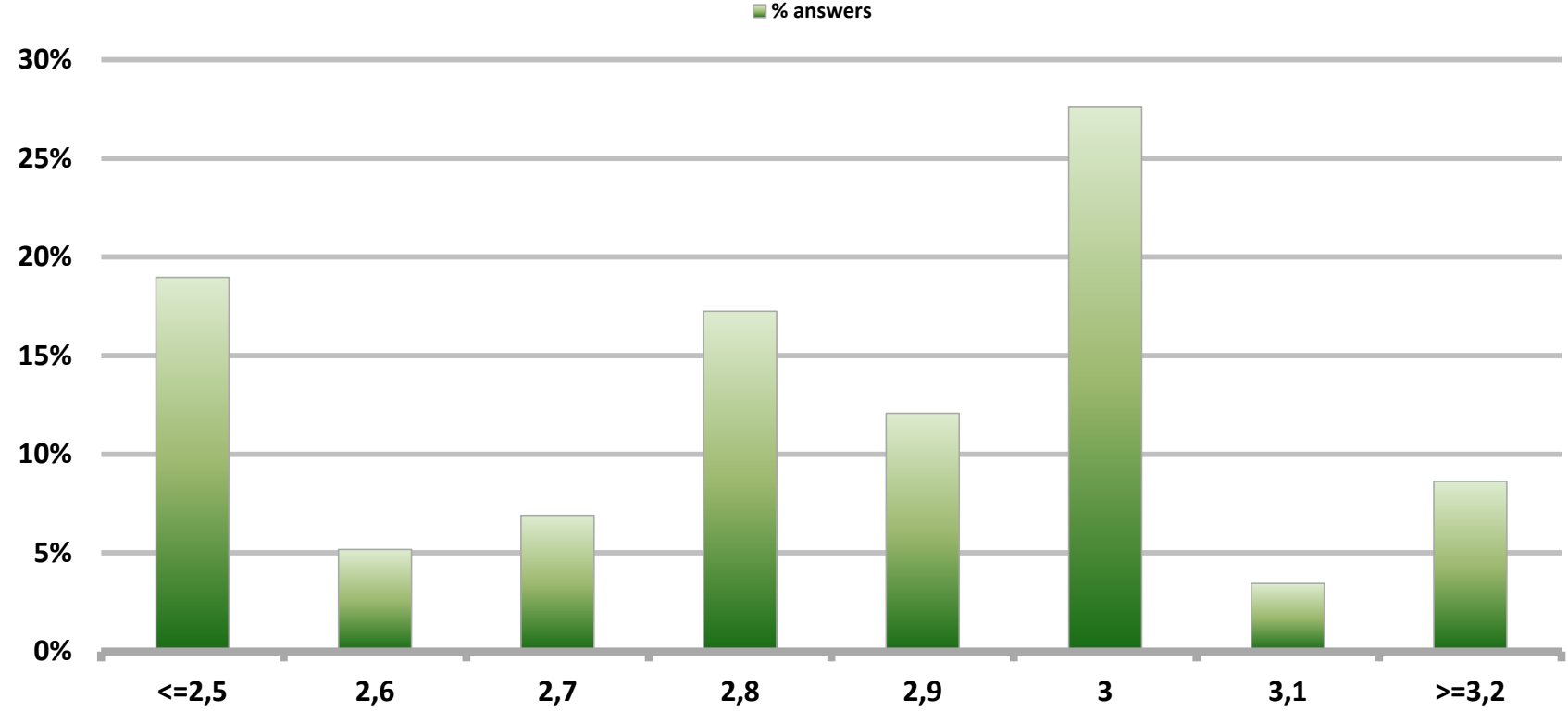


Monthly Survey On Expectations September 2013

Inflation in eleven months (12-month change)

Answers: 58

Median: 2,9%

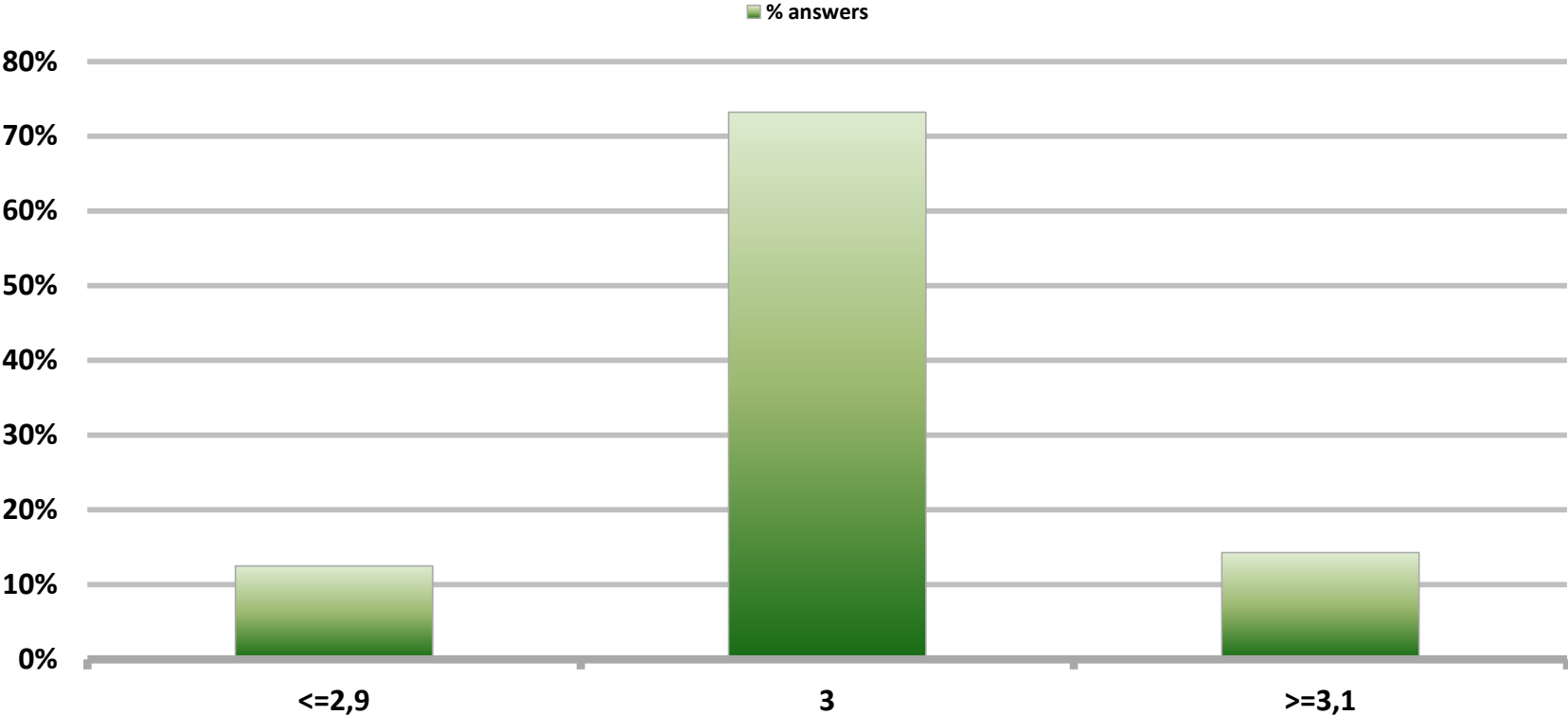


Monthly Survey On Expectations September 2013

Inflation in twenty three months (12-month change)

Answers: 56

Median: 3%

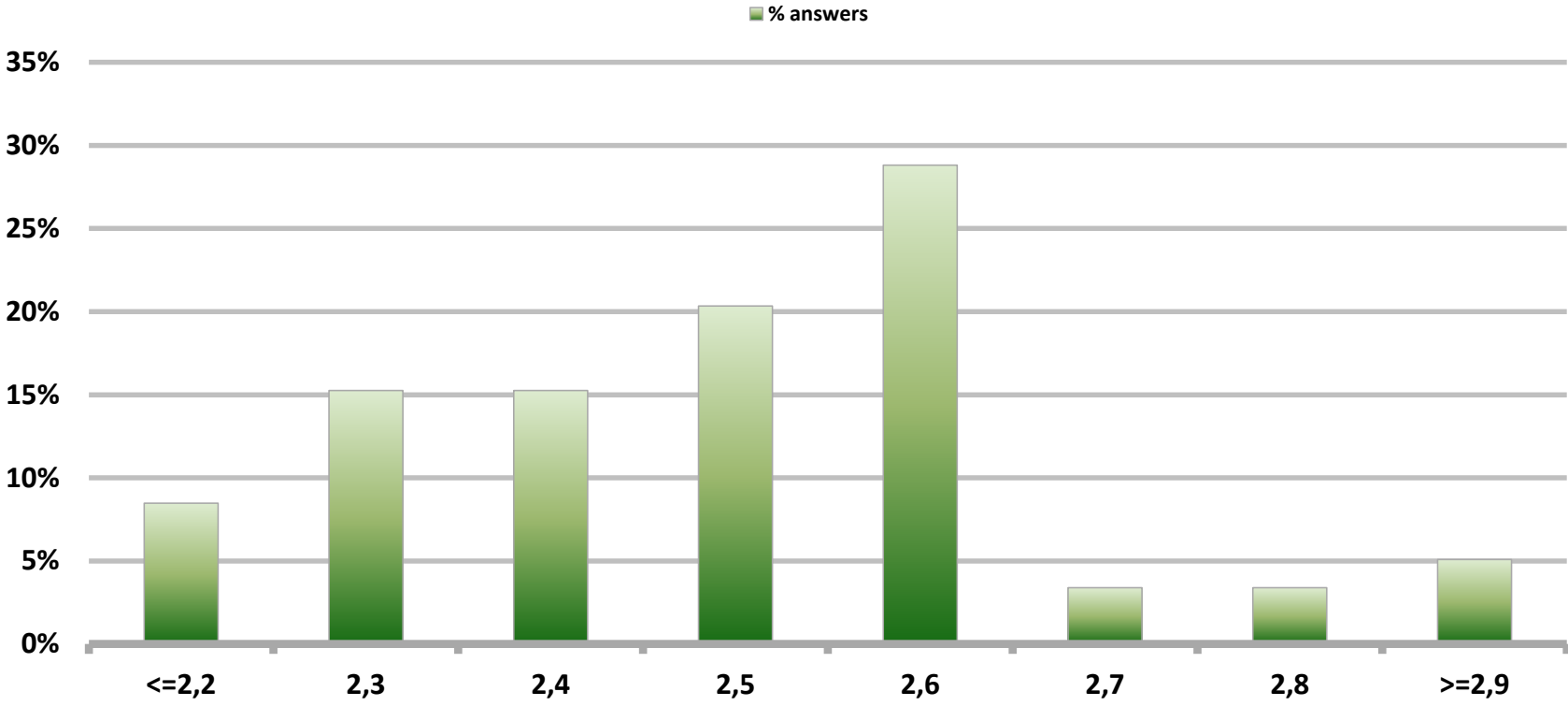


Monthly Survey On Expectations September 2013

Inflation december 2013 (12-month change)

Answers: 59

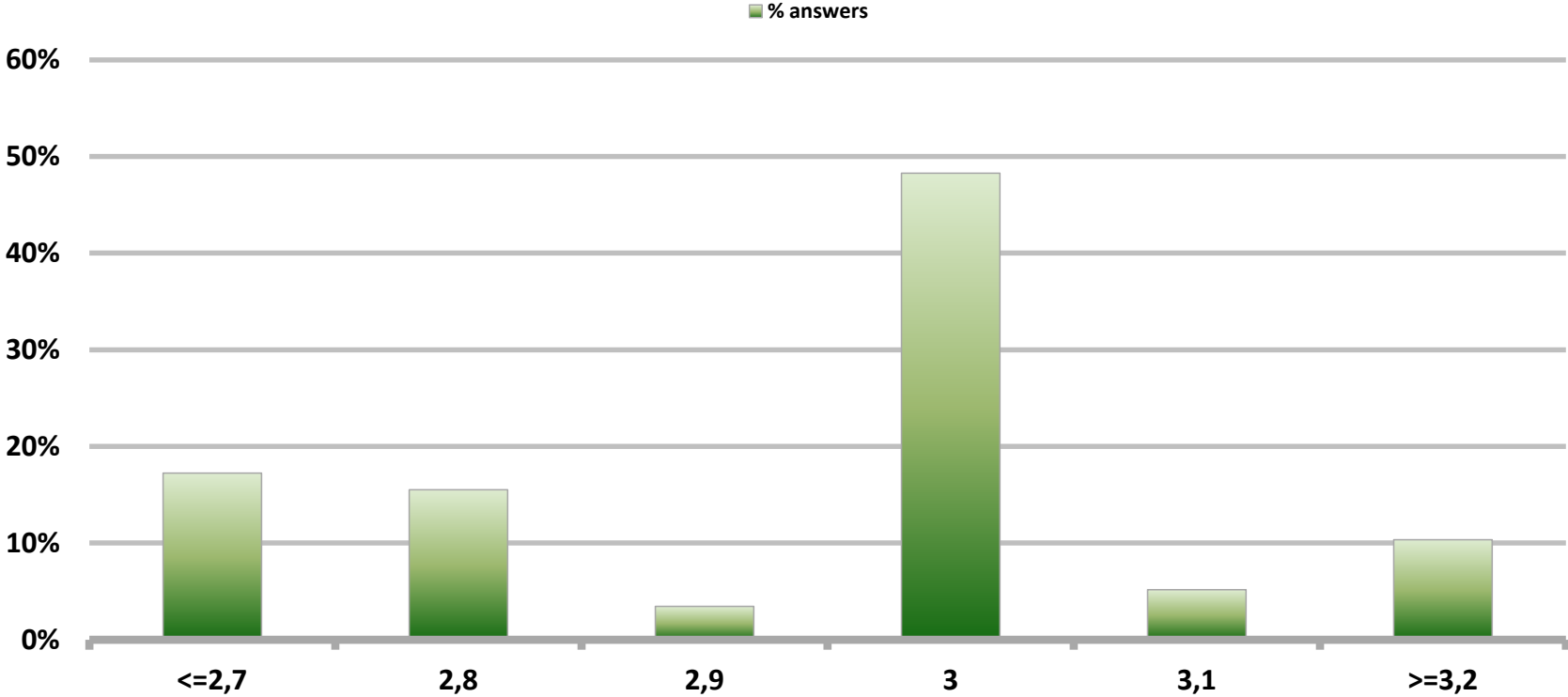
Median: 2,5%



Monthly Survey On Expectations September 2013 Inflation december 2014 (12-month change)

Answers: 58

Median: 3%

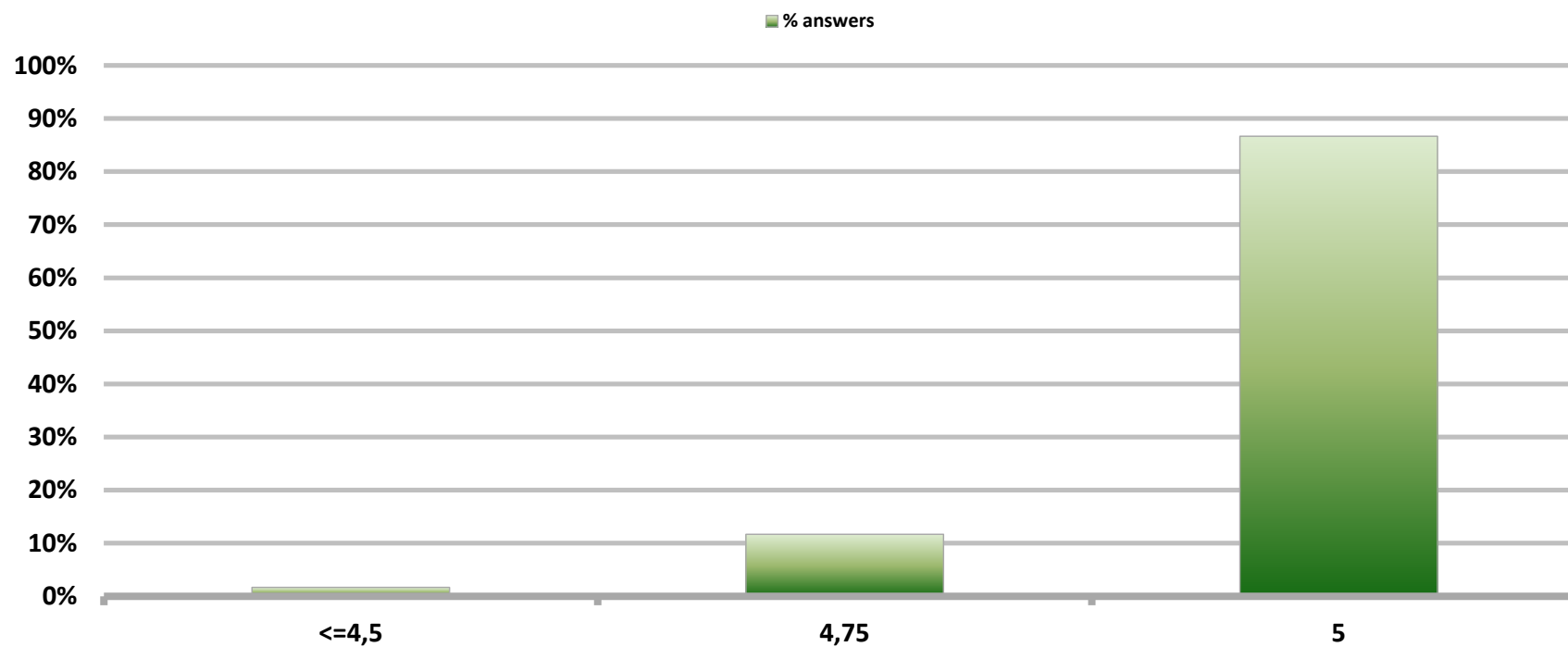


Monthly Survey On Expectations September 2013

Monetary Policy rate target current month

Answers: 60

Median: 5%

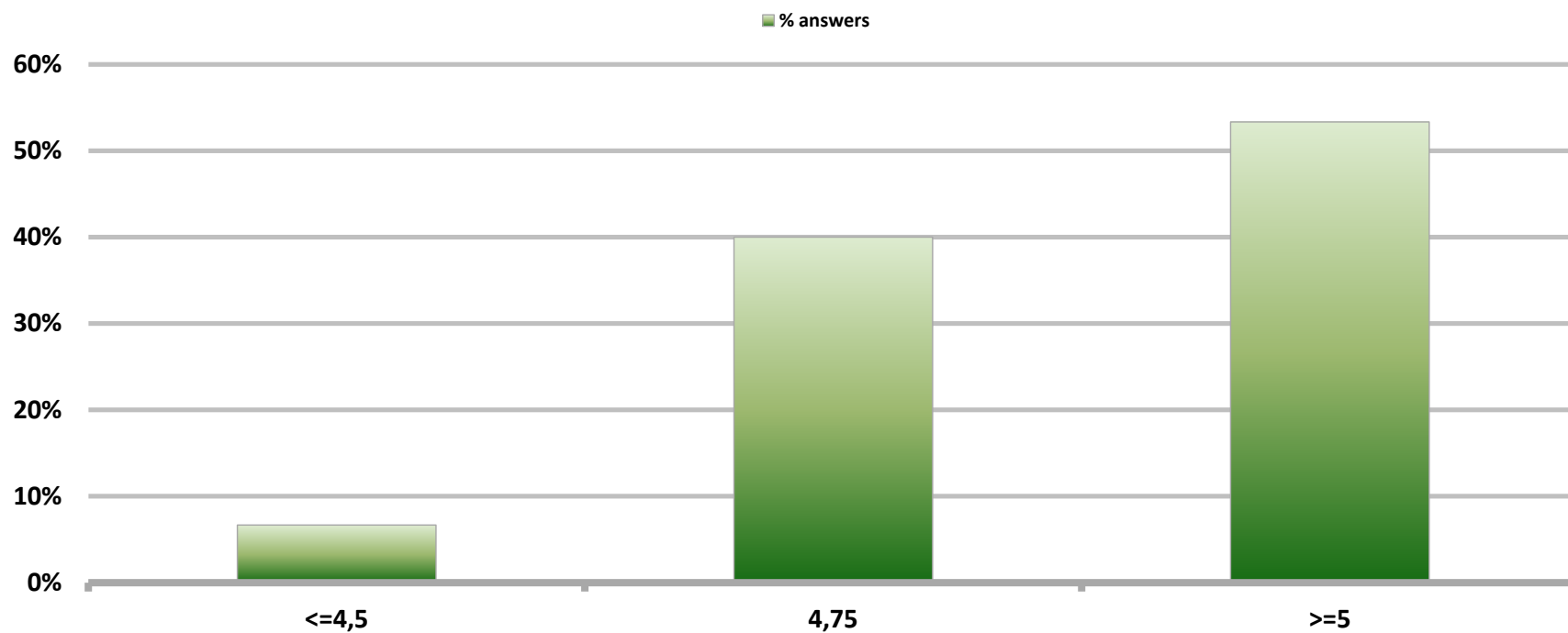


Monthly Survey On Expectations September 2013

Monetary Policy rate target current month

Answers: 60

Median: 5%

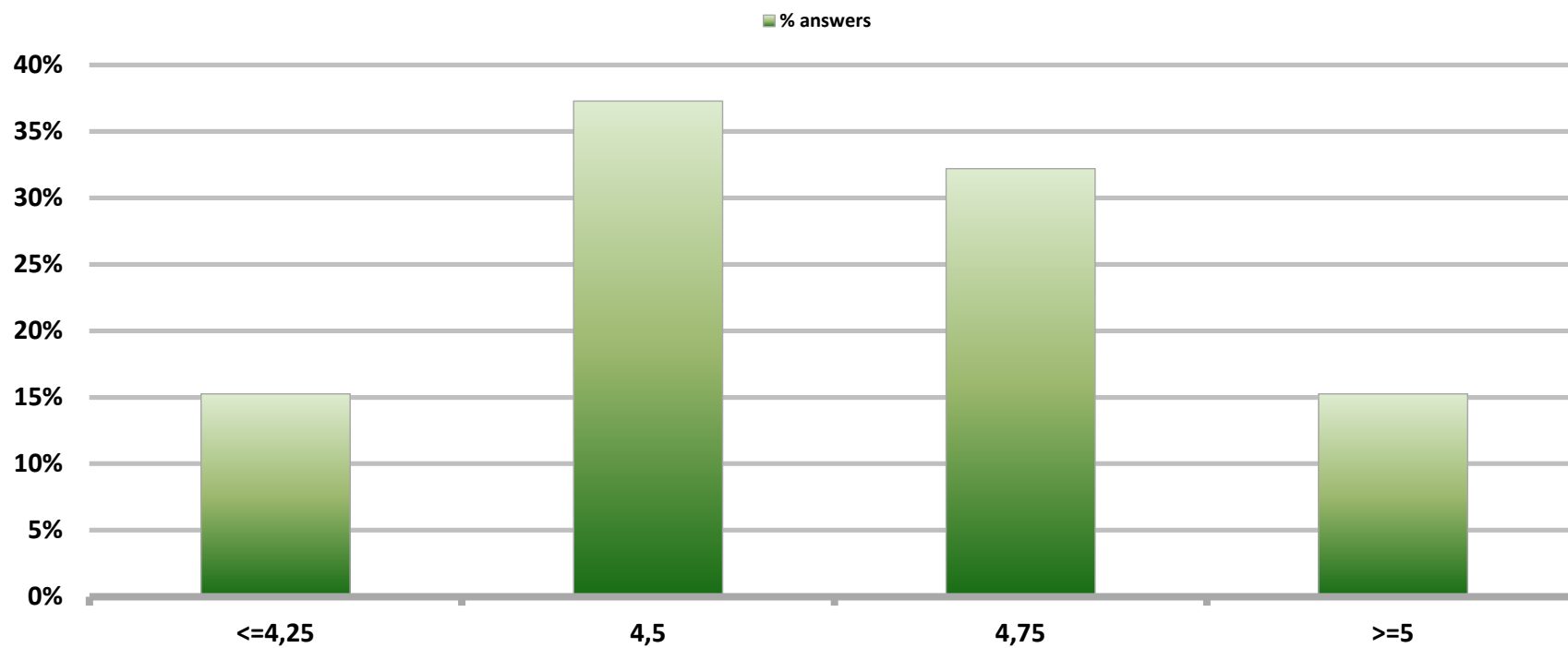


Monthly Survey On Expectations September 2013

Monetary Policy rate target In five months

Answers: 59

Median: 4,5%

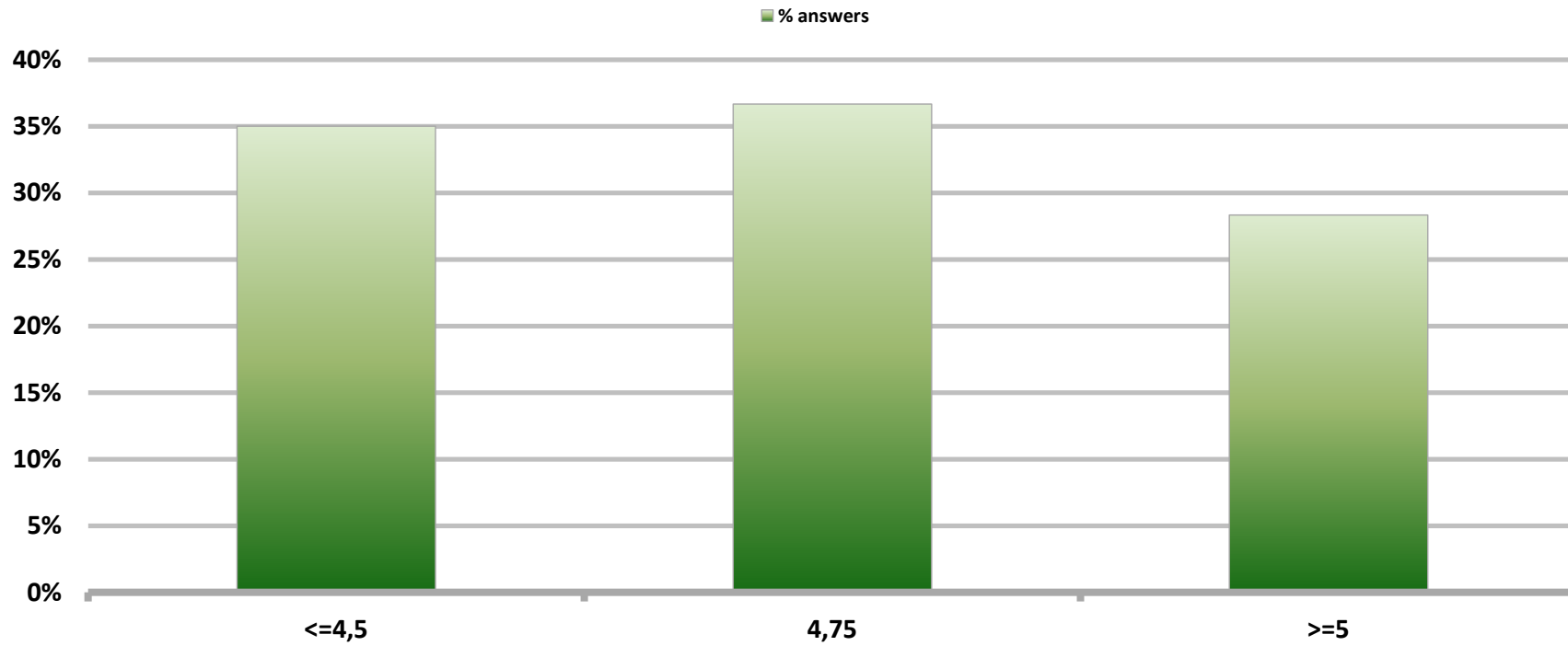


Monthly Survey On Expectations September 2013

Monetary Policy rate target december 2013

Answers: 60

Median: 4,75%

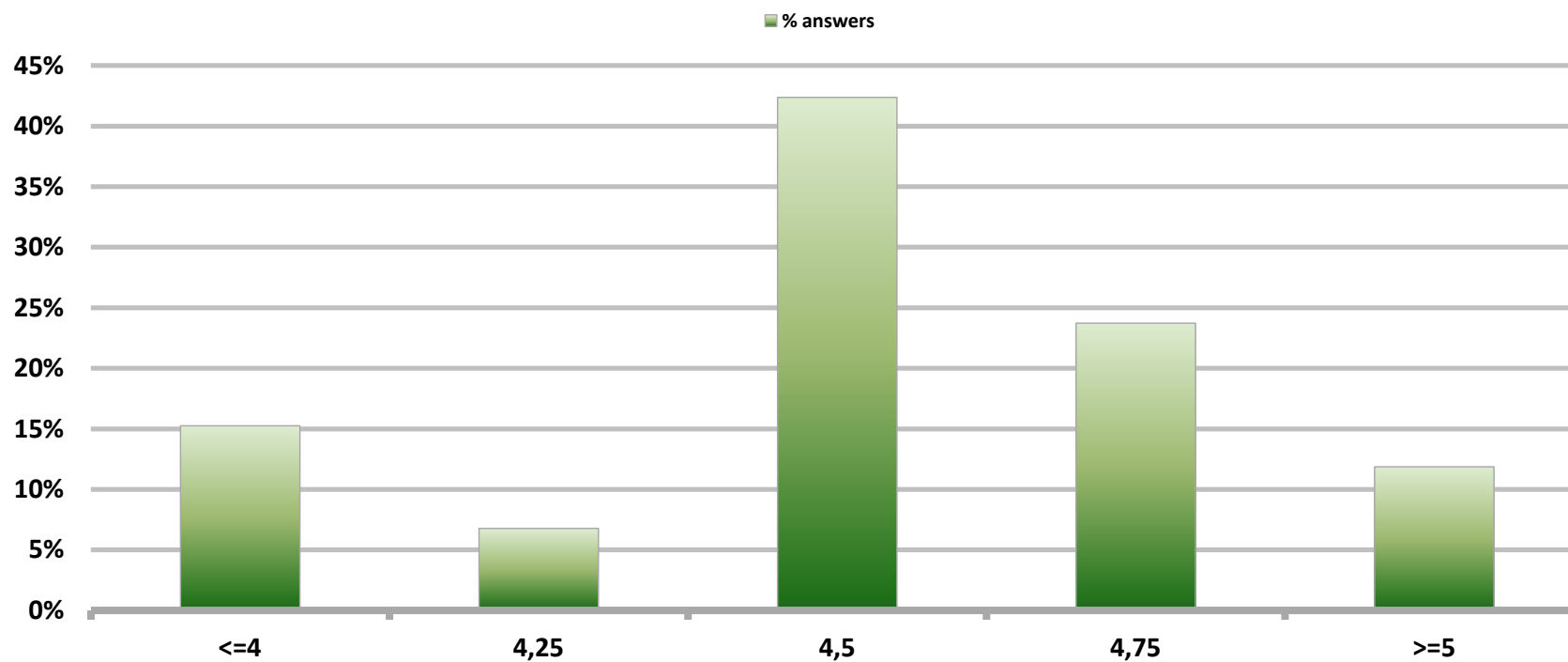


Monthly Survey On Expectations September 2013

Monetary Policy rate target in eleven months

Answers: 59

Median: 4,5%

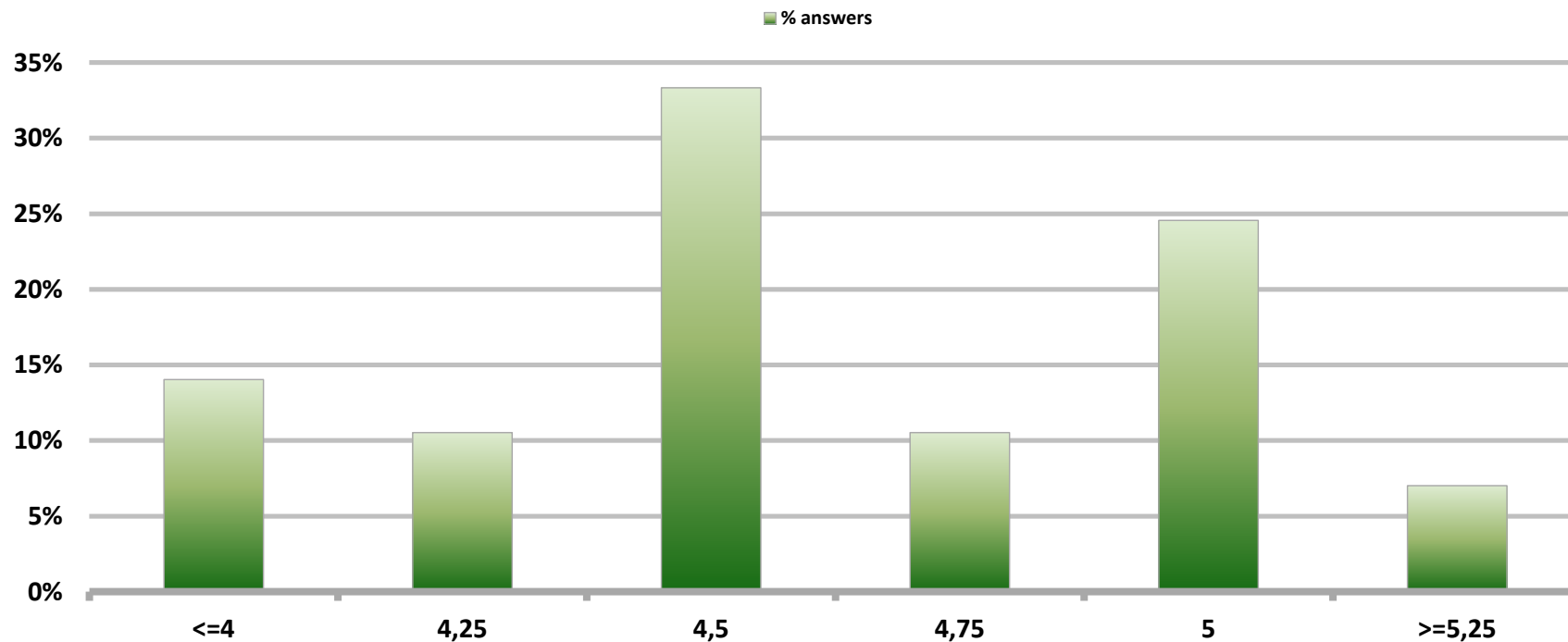


Monthly Survey On Expectations September 2013

Monetary Policy rate target in seventeen months

Answers: 57

Median: 4,5%

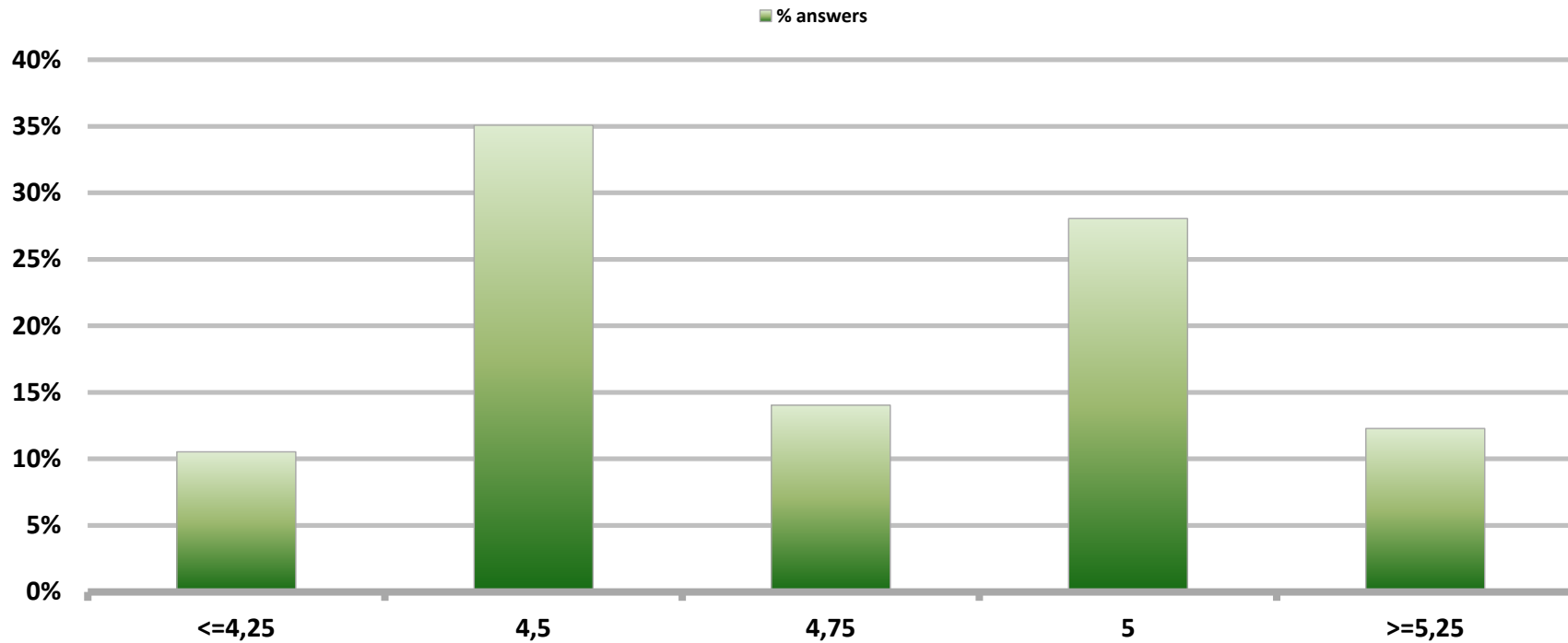


Monthly Survey On Expectations September 2013

Monetary Policy rate target in twenty three months

Answers: 57

Median: 4,75%

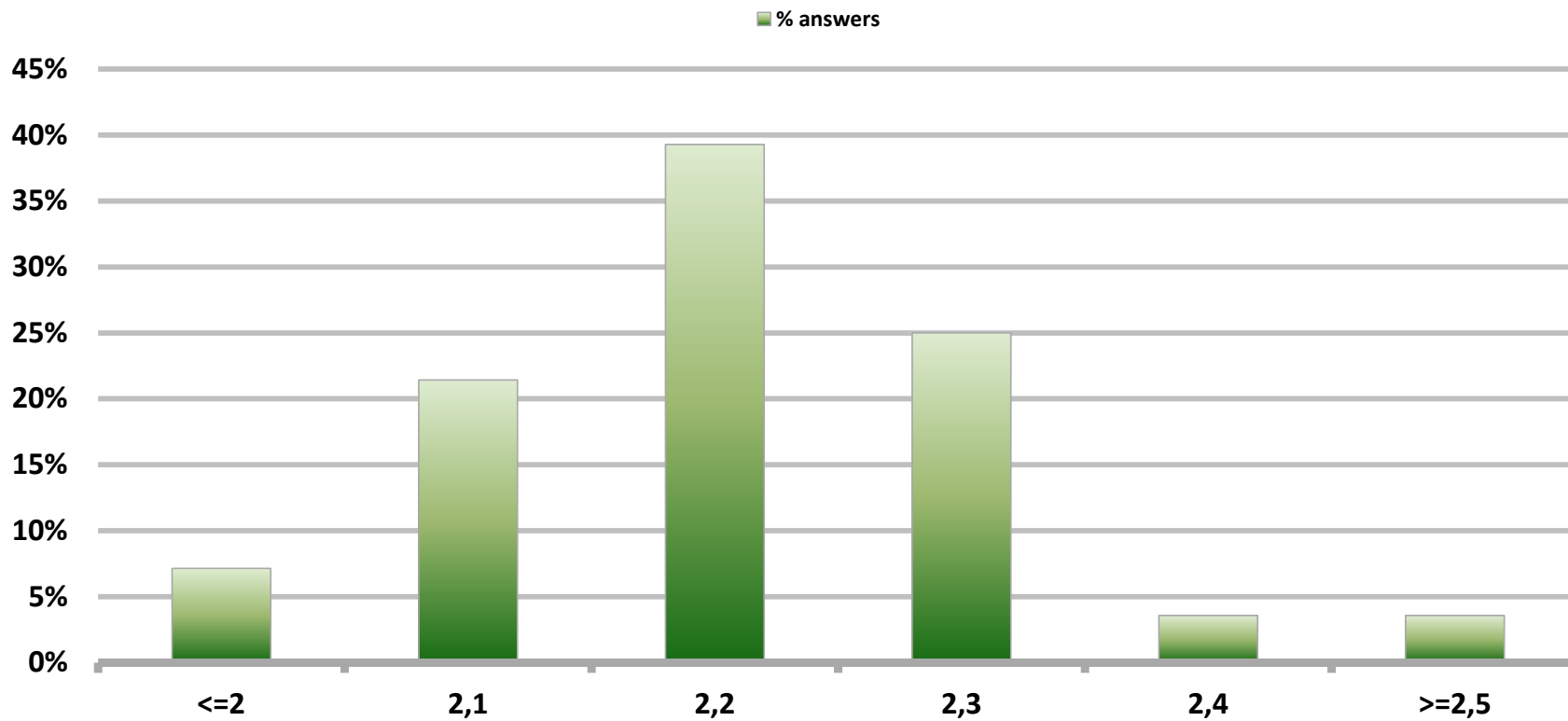


Monthly Survey On Expectations September 2013

5-Year BCU In two months

Answers: 56

Median: 2,2%

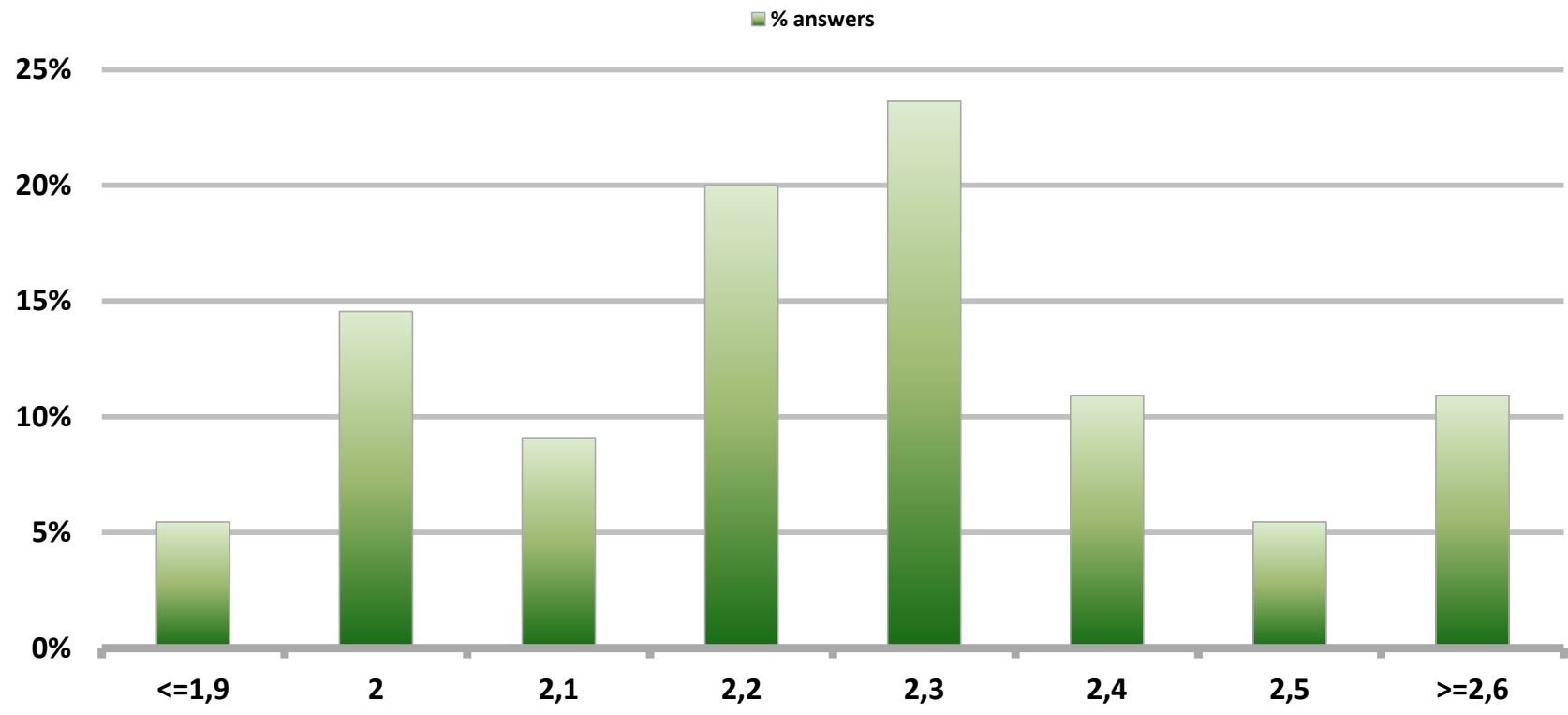


Monthly Survey On Expectations September 2013

5-Year BCU in eleven months

Answers: 55

Median: 2,3%

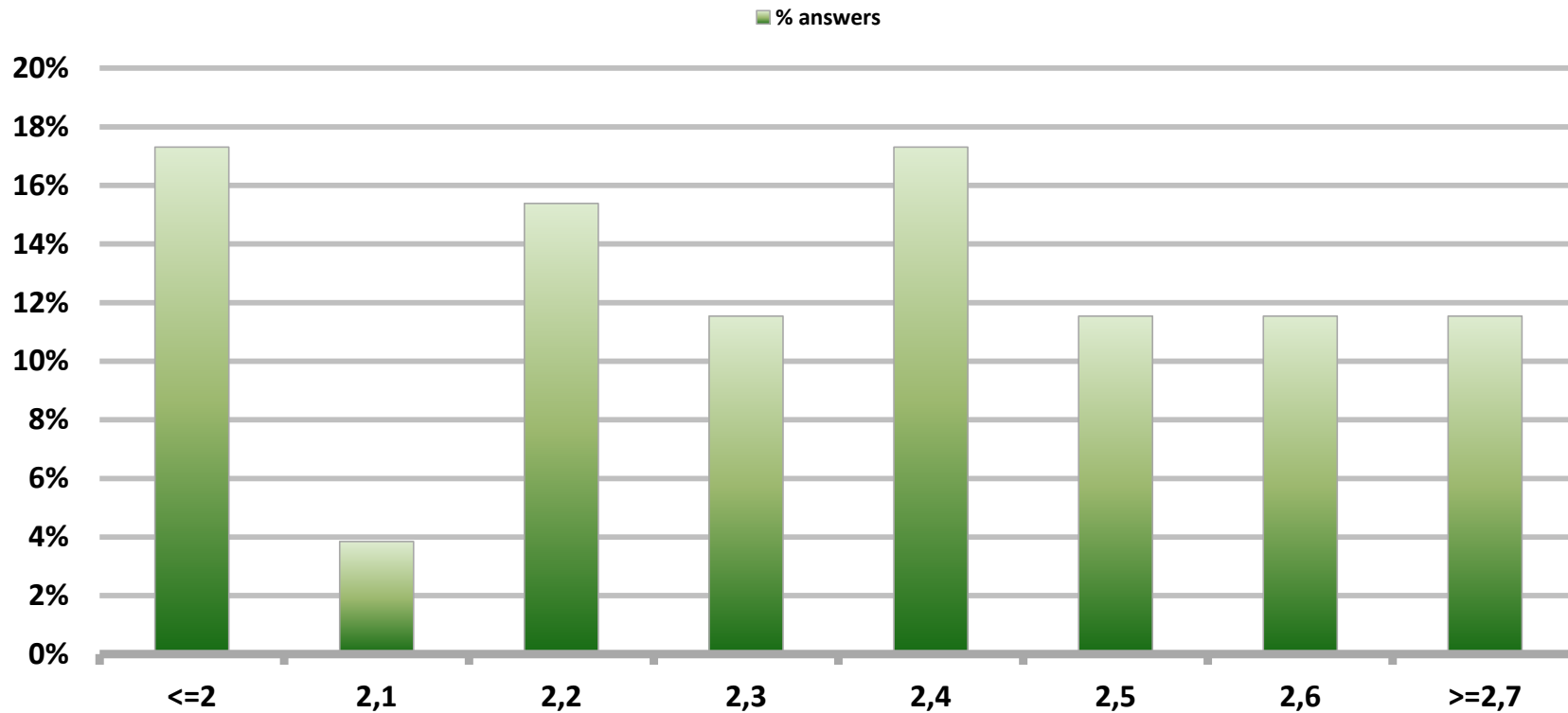


Monthly Survey On Expectations September 2013

5-Year BCU in twenty three months forward

Answers: 52

Median: 2,4%

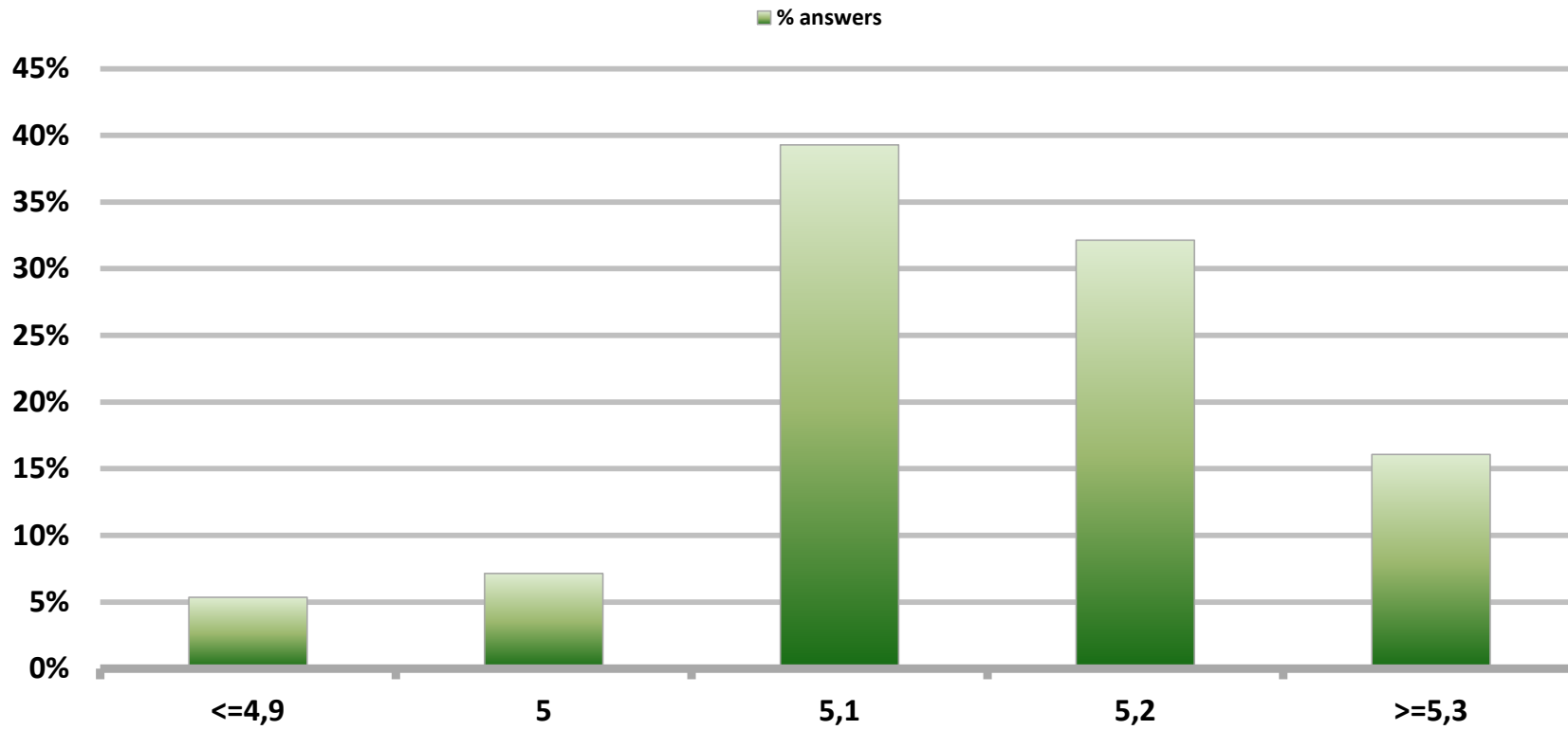


Monthly Survey On Expectations September 2013

5-Year BCP in two months

Answers: 56

Median: 5,1%

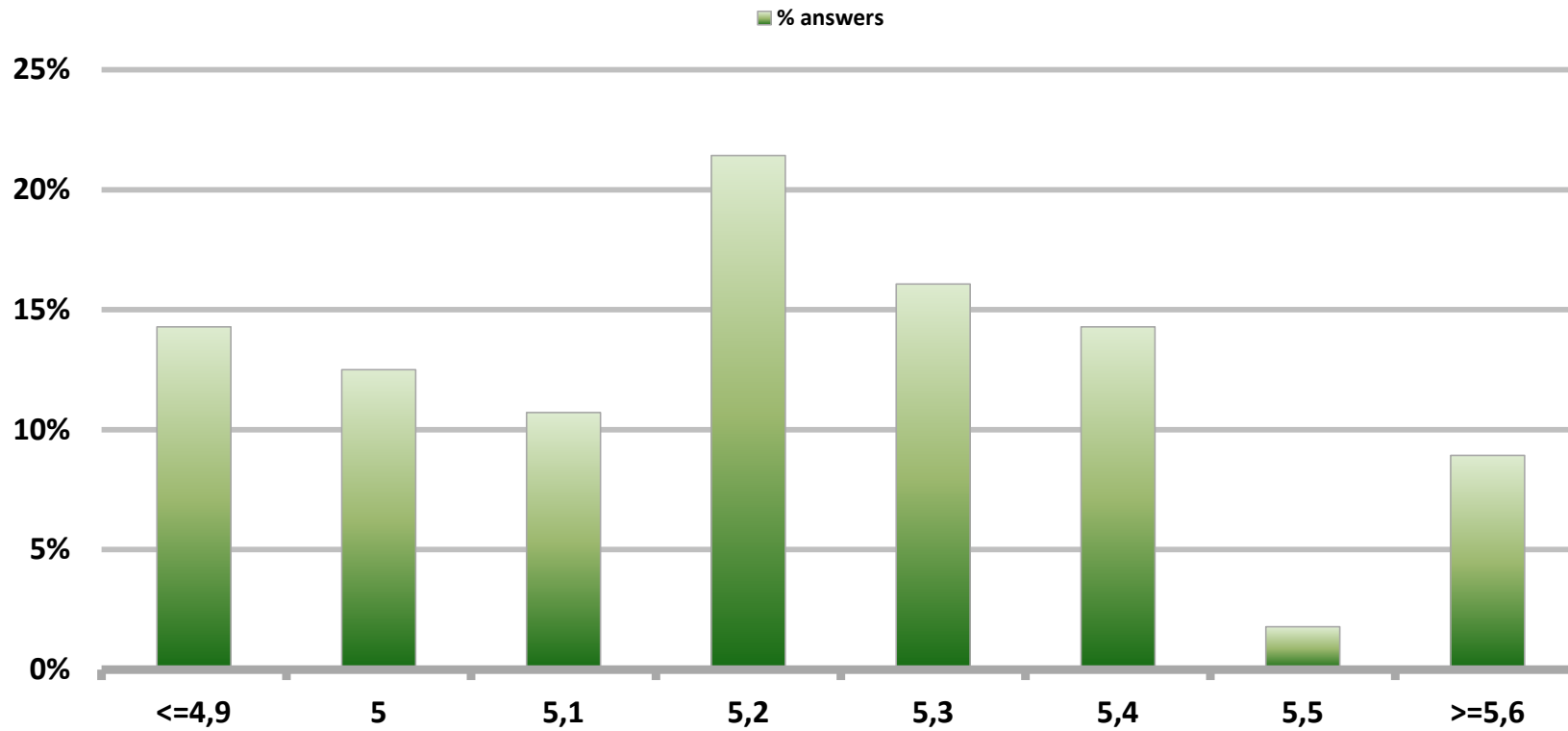


Monthly Survey On Expectations September 2013

5-Year BCP in eleven months

Answers: 56

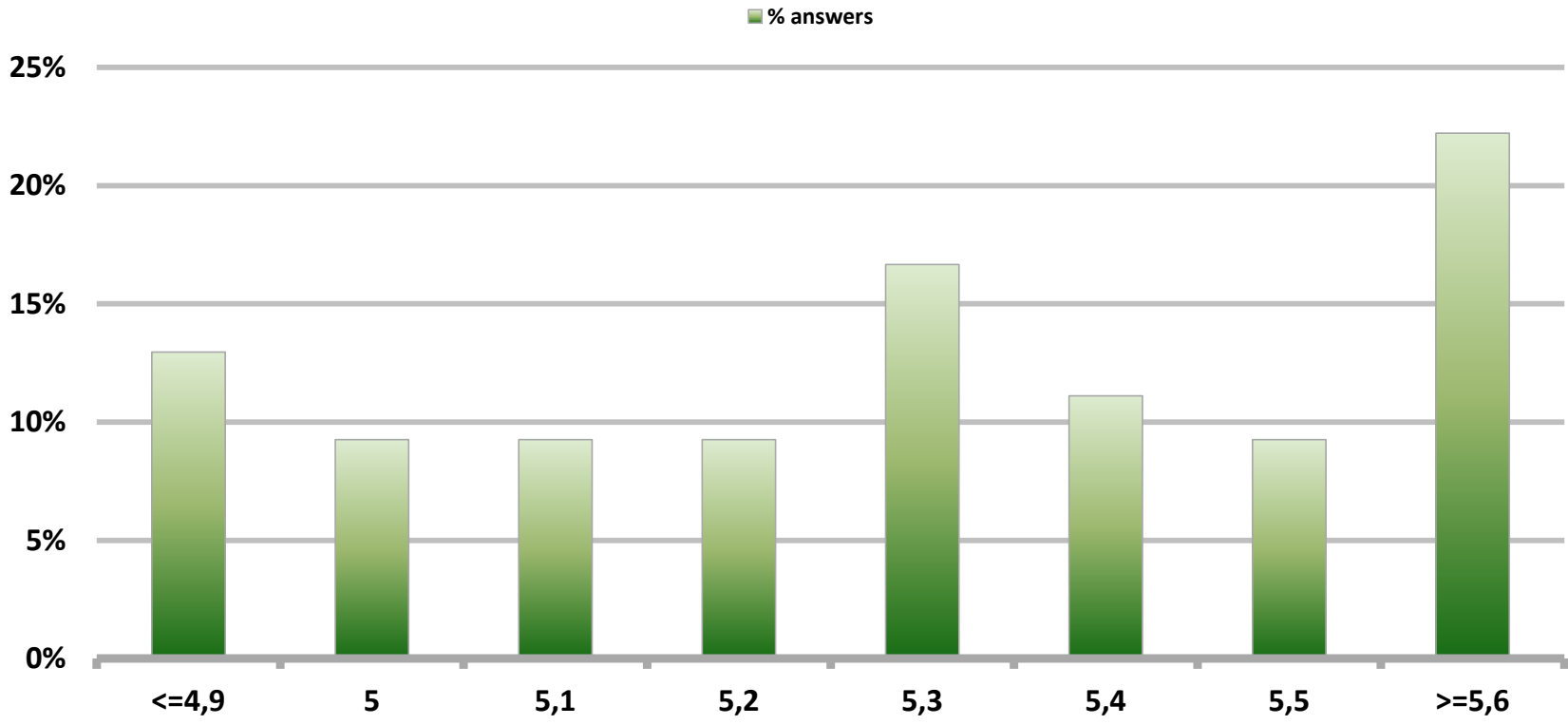
Median: 5,2%



Monthly Survey On Expectations September 2013
5-Year BCP in twenty three months forward

Answers: 54

Median: 5,3%

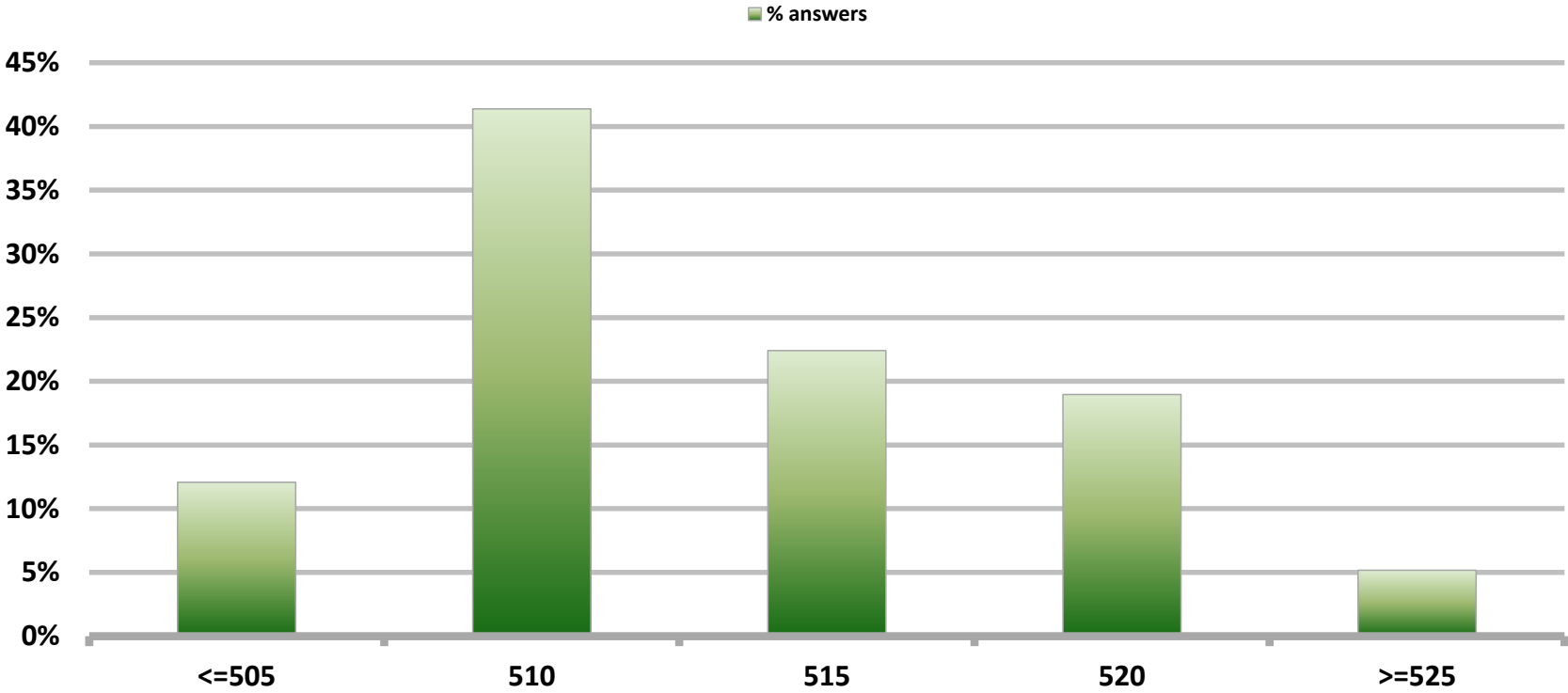


Monthly Survey On Expectations September 2013

Exchange Rate in two months (CH \$ per US\$)

Answers: 58

Median: \$ 513

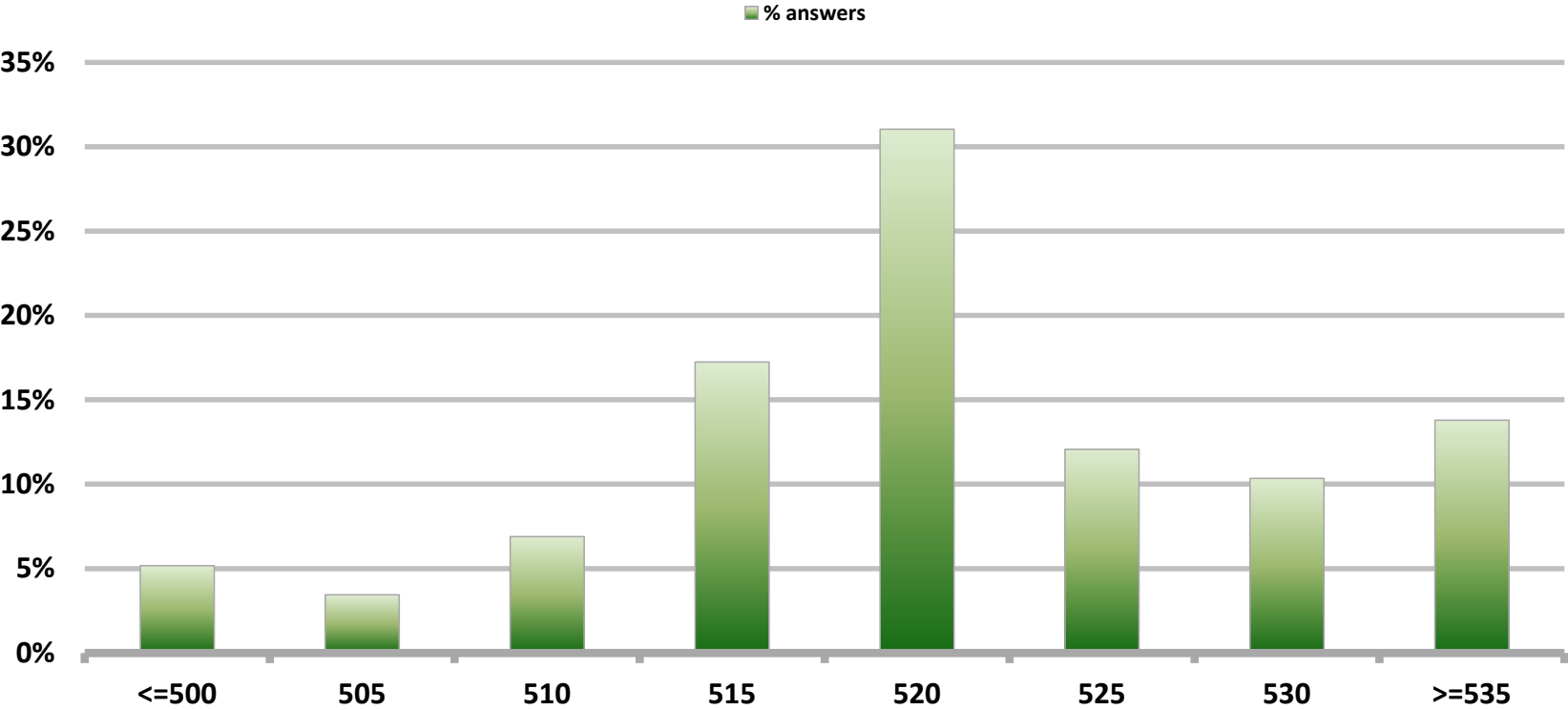


Monthly Survey On Expectations September 2013

Exchange Rate in two months (CH \$ per US\$)

Answers: 58

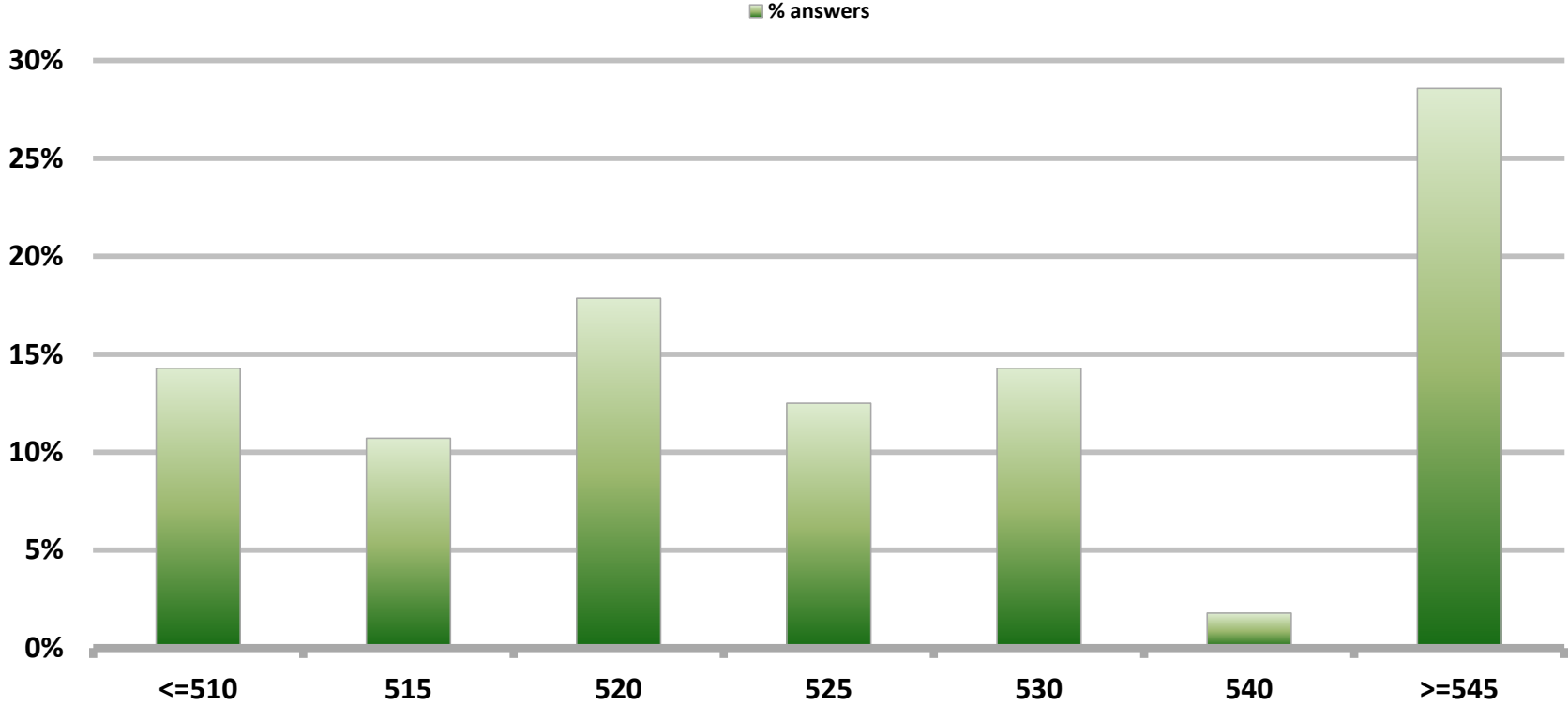
Median: \$ 520



Monthly Survey On Expectations September 2013
Exchange Rate in eleven months (CH \$ per US\$)

Answers: 56

Median: \$ 525

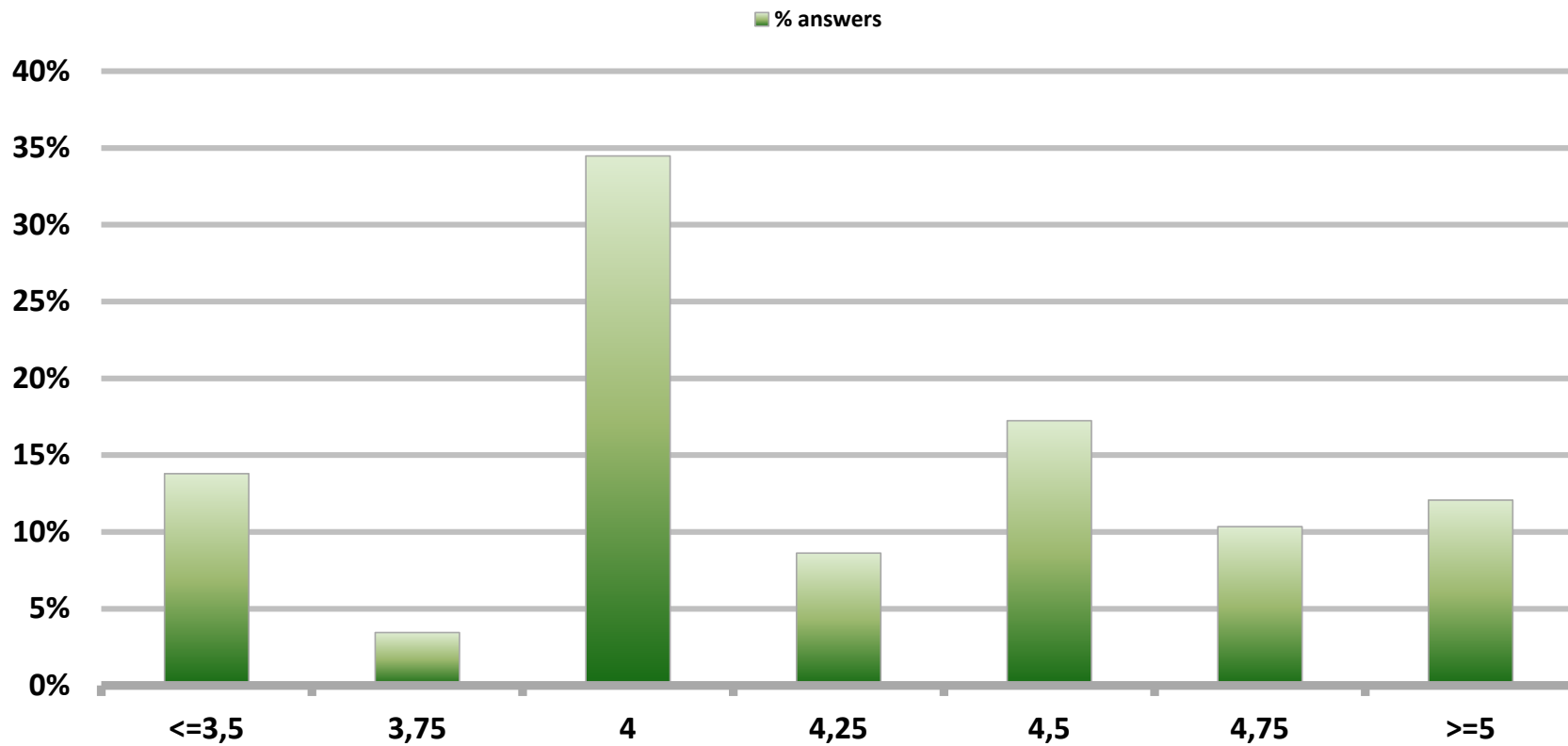


Monthly Survey On Expectations September 2013

IMACEC (Monthly Activity Index) one month ago

Answers: 58

Median: 4,1%

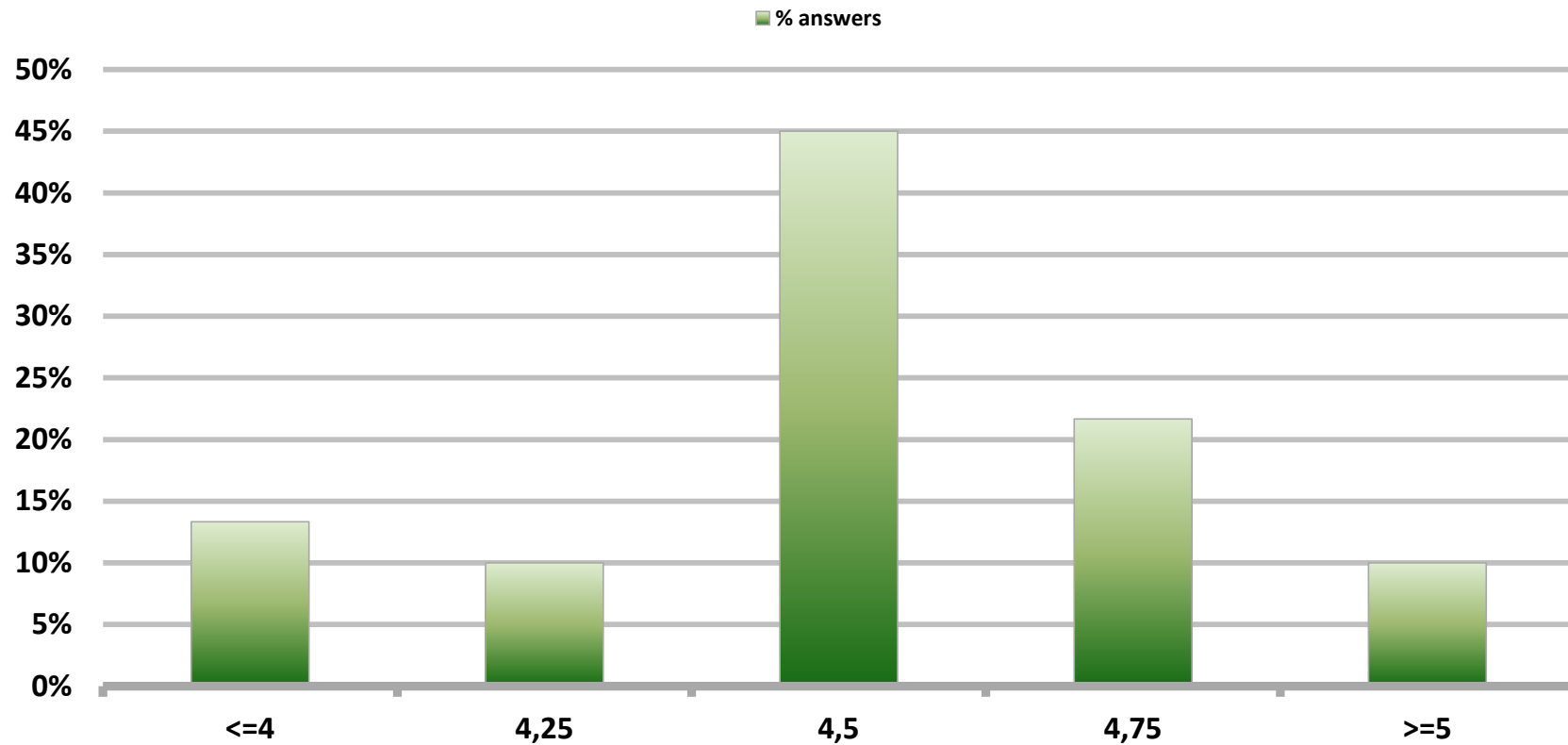


Monthly Survey On Expectations September 2013

GDP within calendar quarter of the survey

Answers: 60

Median: 4,5%

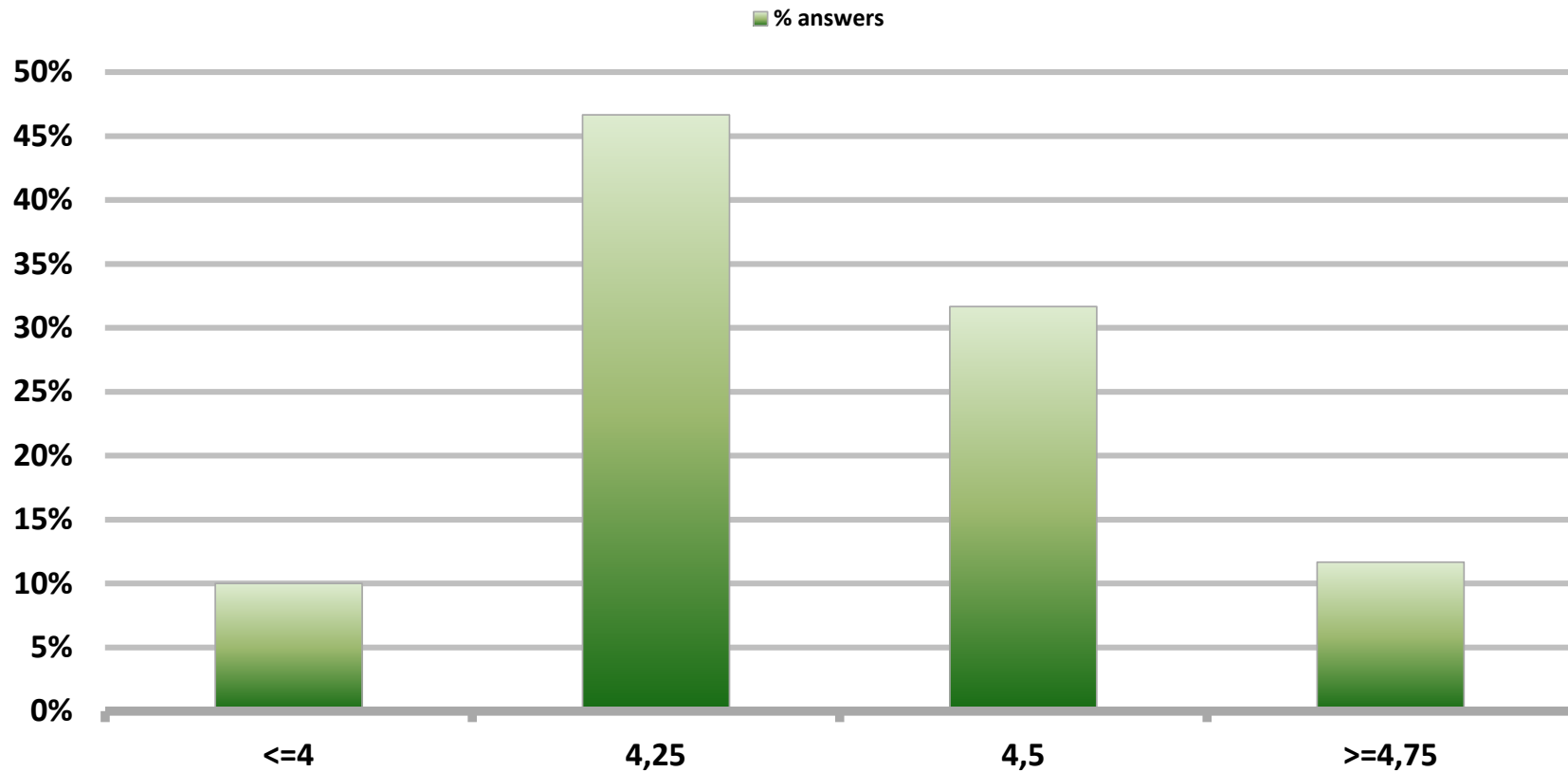


Monthly Survey On Expectations September 2013

GDP year 2013 (12-month change)

Answers: 60

Median: 4,3%

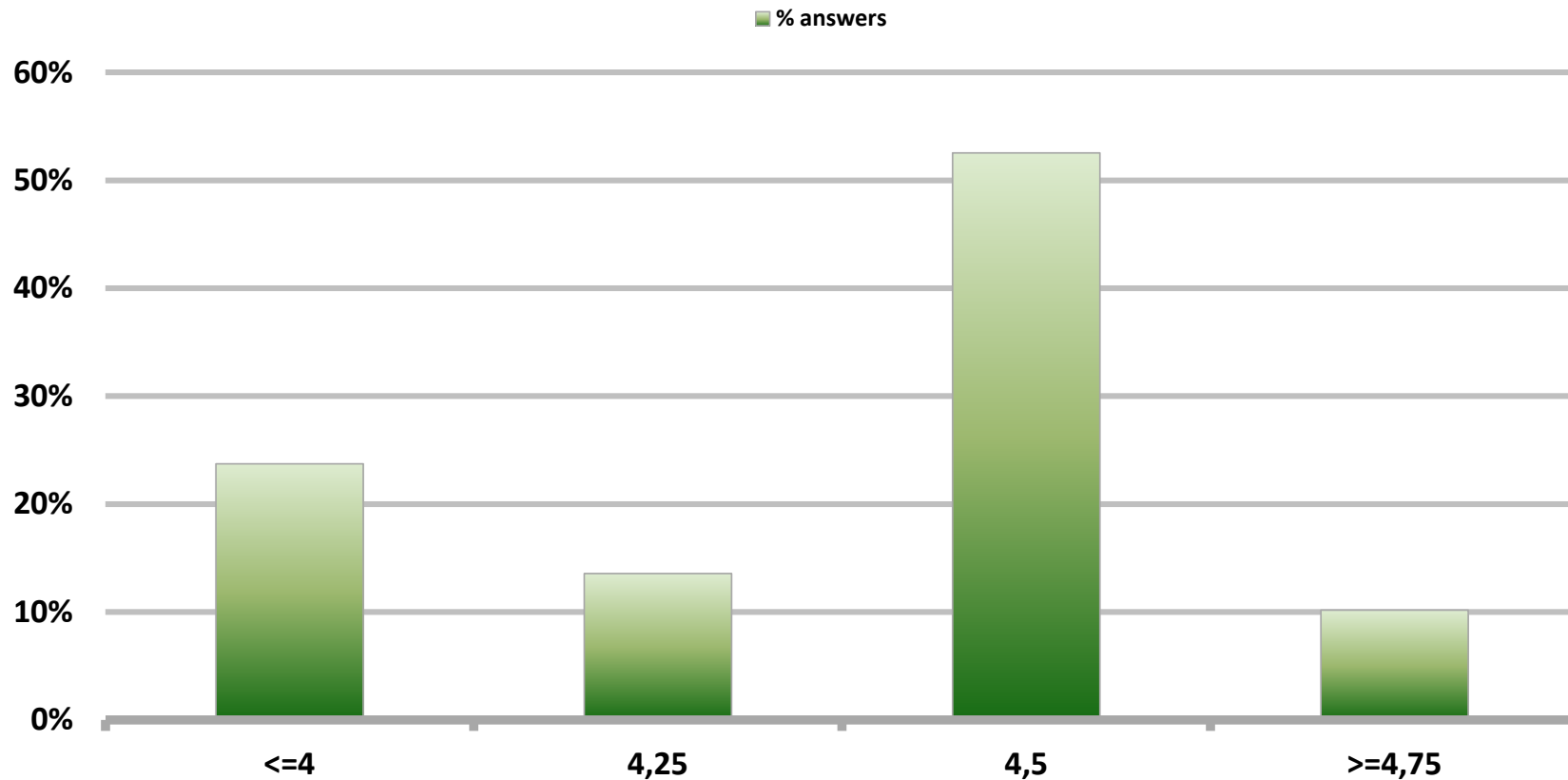


Monthly Survey On Expectations September 2013

GDP year 2014 (12-month change)

Answers: 59

Median: 4,5%



Monthly Survey On Expectations September 2013

GDP year 2015 (12-month change)

Answers: 57

Median: 4,5%

