

DOCUMENTOS DE TRABAJO

Commodity price shocks, factor utilization, and productivity dynamics

Gustavo González

N° 939 Enero 2022

BANCO CENTRAL DE CHILE





La serie Documentos de Trabajo es una publicación del Banco Central de Chile que divulga los trabajos de investigación económica realizados por profesionales de esta institución o encargados por ella a terceros. El objetivo de la serie es aportar al debate temas relevantes y presentar nuevos enfoques en el análisis de los mismos. La difusión de los Documentos de Trabajo sólo intenta facilitar el intercambio de ideas y dar a conocer investigaciones, con carácter preliminar, para su discusión y comentarios.

La publicación de los Documentos de Trabajo no está sujeta a la aprobación previa de los miembros del Consejo del Banco Central de Chile. Tanto el contenido de los Documentos de Trabajo como también los análisis y conclusiones que de ellos se deriven, son de exclusiva responsabilidad de su o sus autores y no reflejan necesariamente la opinión del Banco Central de Chile o de sus Consejeros.

The Working Papers series of the Central Bank of Chile disseminates economic research conducted by Central Bank staff or third parties under the sponsorship of the Bank. The purpose of the series is to contribute to the discussion of relevant issues and develop new analytical or empirical approaches in their analyses. The only aim of the Working Papers is to disseminate preliminary research for its discussion and comments.

Publication of Working Papers is not subject to previous approval by the members of the Board of the Central Bank. The views and conclusions presented in the papers are exclusively those of the author(s) and do not necessarily reflect the position of the Central Bank of Chile or of the Board members.

Documentos de Trabajo del Banco Central de Chile
Working Papers of the Central Bank of Chile
Agustinas 1180, Santiago, Chile
Teléfono: (56-2) 3882475; Fax: (56-2) 38822311

Commodity price shocks, factor utilization, and productivity dynamics*

Gustavo Gonzalez[†]
Central Bank of Chile

Abstract

I investigate the importance of commodity price shocks on aggregate productivity dynamics. I focus on variable utilization of primary factors as driving mechanism. I exploit variation in product tradability and cost exposure to the copper industry to characterize the responses of manufacturing Chilean firms to copper price shocks. I find that, when copper prices increase, establishments selling non-tradables display higher productivity growth than those selling tradables. At the same time, plants more cost-exposed to the copper industry display lower growth. I develop a multi-sector small open economy model featuring frictions to factor management and variable factor utilization. I quantitatively find that variable utilization can generate a strong positive association between copper price shocks and measured aggregate productivity, as it is observed in Chilean data.

Resumen

En este artículo investigo la importancia de las perturbaciones a los precios de los commodities en la dinámica de la productividad agregada. Me enfoco en el uso variable de factores primarios como mecanismo conductor. Exploto variación sectorial en la comerciabilidad internacional de productos y en la exposición de estructuras de costos a la industria del cobre, en orden a caracterizar las respuestas de las plantas pertenecientes a firmas manufactureras chilenas a cambios en el precio del cobre. Encuentro que, cuando los precios del cobre aumentan, los establecimientos que venden bienes no transables internacionalmente exhiben un crecimiento de la productividad más alto que establecimientos similares que venden bienes transables. Al mismo tiempo, plantas más expuestas en términos de costos a la industria cuprífera se caracterizan por tasas de crecimiento más bajas. En base a estos resultados, desarrollo un modelo de economía pequeña y abierta con múltiples sectores que incorpora fricciones al manejo de factores primarios de producción y uso variable de ellos. Muestro que el uso variable de factores puede generar una asociación fuerte y positiva entre las perturbaciones al precio del cobre y la productividad agregada, como se observa en Chile. La volatilidad en la productividad que genera el modelo es más grande que la existente en la realidad, lo que apunta a una correlación negativa entre la productividad agregada ajustada por uso de factores y las perturbaciones al precio del cobre

*I am grateful to my advisors Mikhail Golosov, Joseph Vavra, and Rodrigo Adão for their invaluable guidance and support. I also thank Ufuk Akcigit, Jonathan Dingel, Simon Mongey, Felix Tintelnot, Harald Uhlig, Yu-Ting Chiang, Hyunmin Park, Mikayel Sukiasyan, and Piotr Zoch, as well as seminar participants in the University of Chicago's Capital Theory, International Trade, and Applied Macro Theory workshops.

[†] Email: ggonzalezl@bcentral.cl

1 Introduction

A very persistent feature of business cycles in open economies is that terms of trade shocks are procyclical (Mendoza (1995), Kose (2002), Fernández et al. (2018), Drechsel and Tenreyro (2018), among others). At the same time, it has been extensively documented that total factor productivity (TFP) positively and strongly comoves with output (Basu and Fernald (2001), Basu et al. (2006)). Figure 1 plots the growth rates of real gross domestic product (GDP) and total factor productivity (TFP) for Chile, a commodity exporting economy, jointly with the growth rate in copper prices, Chile's main export and a very important driver of its terms of trade with the rest of the world.¹ We can observe that both TFP and copper prices are procyclical. The correlation coefficient between TFP and copper price changes is 0.69, a magnitude in the range of those observed for other countries.²

In spite of the pervasiveness of these patterns, a basic one-sector open-economy model is not able to generate any correlation between exogenous price shocks and aggregate efficiency, as productivity is invariant, up to a first-order, to price movements (Kehoe and Ruhl (2008)). In this paper, I contribute towards filling this gap in the literature by proposing variable factor utilization as an explanation. If firms need to change their output levels, but face short run constraints to alter the capital stock or the total amount of manhours they have hired, they can use machines at a different power or require workers to exert a different level of effort per hour worked. As these adjustments are normally unobserved by the econometrician, whenever terms of trade shocks create variations in the product demand or the input costs firms face, firms' measured productivity should change as a consequence.

I start by documenting stylized facts about the Chilean manufacturing sector in the period 1996-2007. I focus on the effects that yearly fluctuations in the price of copper have on manufacturing establishments. I exploit two sources of variation across industries: i) the international tradability of the sectoral product, and ii) the reliance of the industry's production processes on copper. My goal is to

¹Copper represents around 51% of Chile's total exports and 9.7% of its GDP. Shocks to the price of this commodity are tightly associated with variations in Chile's terms of trade. The correlation coefficient between the average yearly copper price, as traded in the London Metal Exchange, and the yearly terms of trade index is 0.97 for the 1996-2010 period.

²For example, according to Kehoe and Ruhl (2008), the correlation coefficient between changes in terms of trade and TFP for Mexico in the 1980-2005 period is 0.71, while for the United States in the 1970-2007 period is 0.42.

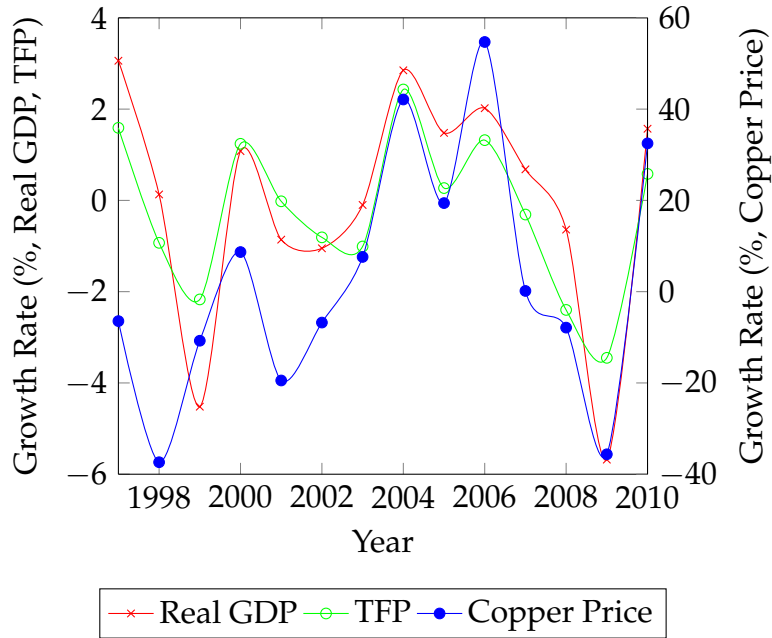


Figure 1: Chile: Real GDP, TFP, and Copper Price

Note: On the y-axis on the left we have real GDP and TFP growth rates. On the y-axis on the right we have copper price growth rates. Real GDP is measured with the chain-weighting method. TFP is the Solow residual obtained from this real GDP measure and capital and labor inputs, as calculated by the Chilean National Commission of Productivity (CNP, in Spanish). The price of copper corresponds to the average yearly value, in U.S. dollars per pound, as traded in the London Metal Exchange

characterize the supply and demand perturbations that changes in copper prices induce on manufacturing firms. I find that, when the price of copper increases 1% in a year, establishments in sectors selling non-tradables and that have an average reliance on copper to produce display 0.66% higher output, 0.39% higher revenue-based total factor productivity (RTFP), and 0.17% higher employment, relative to comparable firms in tradable sectors. At the same time, conditional on product tradability, establishments that have a one standard-deviation additional reliance on copper to produce feature -0.04% lower output, -0.02% lower RTFP, and no differential employment responses. When the price of copper increases by the same amount in the lapse of 4 years, similar responses on both margins are observed for output and TFP. In the case of employment, however, larger differentials are found for non-tradable firms relative to tradable ones, which hints at reallocation costs

taking place at the very short run.

Guided by these empirical facts, I write a small open economy, multi-sector model featuring a full array of inter-industry linkages, hiring costs, and the possibility of variable factor utilization by firms. In this model, if firms want to adjust their scale of production, they have two options to do so. They can either hire more input units, such as more machines or more manhours, or they can use each input unit more intensively. If manhours are used more intensively, workers have to be compensated for their effort with a higher wage per hour worked, while if capital is used more intensively, it gets depreciated faster. Firms have incentives to vary the rate at which they use their inputs over time. In particular, in the model, firms have to make their input hiring/firing decisions before knowing the current period's perturbations, which implies that they cannot respond to unexpected supply or demand shocks by adjusting on this margin. For this reason, they will resort to change how intensively they use their factors. As changes in utilization are usually not observed by the statistician, any conventional TFP measure will capture swings in this dimension as variations in TFP.

I then study a restricted version of this model, which abstracts from capital accumulation, considers only three sectors, takes into account only downstream effects from the commodity producing industry, and imposes balanced trade. Within this setting, I show that, for a higher commodity price to increase national income and constitute an effective resource windfall, we need the output ratio between the commodity producing sector and the other tradable sector to be larger than a threshold level. This threshold is increasing in: i) the importance of the commodity in the production processes of other sectors, and ii) in the factor price elasticity of the intensity of use of factors. This means that whenever there is a commodity price shock, the economy will trade-off the benefit of larger revenues for the commodity producing sector with the damage of higher costs for all other industries that use the commodity. If the effect of larger revenues is bigger than that of higher costs, then the economy will enjoy an increase in domestic income. In other words, the economy needs to have a comparative advantage in commodity production that is large enough to make it a strong net exporter of the good, as commodity price swings will not just increase revenues from the commodity producing sector, they will also directly harm other tradable sectors that use the commodity to produce. When this condition holds, *ceteris paribus*, households

demand more of all final consumption goods, tradable and non-tradable.³ Industries selling non-tradables, therefore, try to raise production but they cannot attract inputs due to the short-run hiring frictions, so they resort to use more intensively the inputs they have at their disposal instead. This higher factor utilization is measured as an increase in sectoral TFP. On the other hand, if an industry uses the commodity to produce, it faces higher costs. Higher costs lead to sectoral output reduction which, given the barriers to input adjustment, result in less factor utilization and lower measured sectoral TFP, just as in the data. Relatedly, when demand increases for firms selling non-tradables and costs increase for firms that sell tradables and use the commodity to produce, larger TFP and output responses for firms selling non-tradables relative to those offering tradables will be observed.

A quantitative analysis is conducted on a calibrated version of the full model to Chilean data. After feeding the model with the actual copper price series for the period 1996-2009, I find that the model is able to qualitatively match the positive correlation between commodity price shocks and aggregate TFP, and quantitatively generate real GDP and TFP series that are very close to those observed in the data. Importantly, these results are achieved under reasonable parameters and without losing the ability to generate sensible patterns for the trade balance, a problem in other papers that had used this mechanism to explain TFP dynamics for other type of events.⁴ However, the model predicts a much higher volatility of real GDP, TFP, and aggregate hours, a similar volatility in aggregate consumption, and a lower volatility in investment compared to what is observed in the data. These numerical results point to the existence of other shocks that occur simul-

³In the model it is assumed that each identical household possesses an equal share of all firms in the economy. In a more general context, one could think of commodity-producing firms being possessed by a subset of low-MPC households. Of course, this feature would weaken the aggregate demand effects of commodity price shocks. However, commodity producing industries are usually heavily taxed or governments own large shares of them. In Chile, for example, private copper mines are subject to a special royalty tax and CODELCO, the state-owned copper mining company, is the largest copper mining company in the world (9% share of world output, approximately). As long as governments can increase spending, reduce other taxes, increase transfers to households, or payoff outstanding debt (which could in turn give way to lower future taxes or higher future spending), there should be a positive income effect on all households over the wealth and firm-ownership distribution.

⁴[Kehoe and Ruhl \(2009\)](#), for example, evaluate the ability of variable factor utilization to explain the observed fall of TFP in Mexico during the 1994-95 financial crisis.

taneously and in opposite directions with copper price perturbations (such as oil price shocks) and to policies that might have prevented the copper industry from exerting such large influence on macroeconomic outcomes (such as fiscal rules).

Related Literature My paper contributes to five main literatures. First, to the literature on the importance of terms of trade shocks on business cycle fluctuations. [Mendoza \(1995\)](#), [Kose \(2002\)](#), [Fernández et al. \(2018\)](#), and [Drechsel and Tenreyro \(2018\)](#), use variants of open-economy real business cycle (RBC) models and find that terms of trade explain over 40% of the output variance of developing economies. This article differentiates itself in two respects: i) by focusing on the relation between aggregate TFP and terms of trade shocks, a feature that has not been explicitly addressed but for [Kehoe and Ruhl \(2008\)](#); and ii) by incorporating variable factor utilization to the open-economy setup.

Second, to the literature on factor utilization as a driver of business cycle phenomena. [Greenwood et al. \(1988\)](#), [Burnside et al. \(1993, 1995\)](#), [Burnside et al. \(1996\)](#), [Bils and Cho \(1994\)](#), [Meza and Quintin \(2007\)](#), and [Kehoe and Ruhl \(2009\)](#) use RBC models with variable input utilization to show how properties of technology shocks change when adjusting for this margin. In my paper, I provide micro-evidence that strongly suggests that variable factor utilization is an important driver of firm-level responses to terms of trade shocks, and I quantitatively measure the impact of them on factor utilization in the aggregate.

Third, to the literature that identifies technological shocks using disaggregated data, such as [Basu and Fernald \(1997\)](#), [Basu and Kimball \(1997\)](#), [Basu et al. \(2006\)](#), [Fernald \(2014\)](#), and [Huo et al. \(2020\)](#), for a multi-country context. My paper has a similar flavor to this line of research, but I contribute by using establishment-level data, not sector-level data, and by studying the heterogeneity in responses to commodity price shocks according to the tradability of the firm's product and its technological reliance on copper to produce.

Fourth, to the Dutch disease literature. [van Wijnbergen \(1984a,b\)](#) and [Krugman \(1987\)](#) point to the potential negative long-run effects of natural resource booms. However, using regional data for the U.S., [Allcott and Keniston \(2018\)](#) find no evidence of a negative local effect on output. In this article, I exploit cross-industry variation instead of cross-regional, and I do find evidence of a Dutch disease type of situation occurring across industries.

Fifth, this paper will add to the literature about models with production networks. In particular, the basic setup will be a variant of Long and Plosser (1983), which has been used in various papers such as Horvath (1998), Carvalho (2010), Foerster et al. (2011), Jones (2013), DiGiovanni et al. (2020), Caliendo and Parro (2015), Acemoglu et al. (2016), Bigio and La'O (2020), Atalay (2017), Baqaee and Farhi (2019), and Liu (2019). I will extend on them by adding the factor utilization channel and inserting the basic set up in a small open economy context. In addition, the empirical section of this article will be heavily based on Acemoglu et al. (2015), who study how different types of shocks propagate across sectors via input-output linkages.

The remainder of the paper is organized as follows. Section 2 presents the data and the stylized facts. Section 3 describes the model and analytical results for a simplified version of it. Section 4 uses simulations to assess the quantitative relevance of the proposed mechanism at the aggregate level. Section 5 concludes.

2 Commodity Price Shocks and Chilean Firms' Behavior

The goal of this section is to document the impact of commodity price shocks on Chilean firms' output, input choices, and RTFP. In section 2.1 I describe the data to be used. In section 2.2 I describe and justify the two sources of variation considered and the empirical specification that is utilized. In section 2.3 I display the results from the exercise and summarize the main messages to be taken home.

2.1 Data

2.1.1 Manufacturing Sector Data (ENIA)

My main source of microdata is the annual Chilean manufacturing census (Encuesta Nacional Industrial Anual, ENIA in Spanish) for the 1995-2007 period.⁵ The ENIA provides annual establishment level data and covers all manufacturing

⁵This survey has been used in several studies before such as Bergoeing et al. (2010), Corbo et al. (1991), Hsieh and Parker (2007), Levinsohn and Petrin (2003, 2012), Liu (1993), Liu and Tybout (1996), Pavcnik (2002), among others

firms with more than 10 employees.⁶ It contains information on establishments' gross output, value added, employment, wage bill, stock of capital, materials, and industry affiliation. Employment corresponds to the number of workers hired for production in a given year. Capital stock is measured as the sum of the reported book value of machinery, equipment, and vehicles. Plant's industry affiliation is at the 4-digit International Standard Industrial Classification (ISIC) level. To obtain real values, I deflate gross output, capital, and intermediates with their own industry-specific price deflators.⁷ I employ these variables to construct measures of average real wages, capital intensity (capital per worker), materials intensity (materials per worker), and revenue-based total factor productivity (RTFP). The RTFP measure is computed as the residual of a sector-specific constant returns to scale Cobb-Douglas production function in capital, labor, and materials. The output elasticities are obtained by calculating the sectoral labor and materials shares of output per what is observed in Chilean national accounts. For robustness, I also estimate these parameters using the [Olley and Pakes \(1996\)](#) methodology.⁸

The establishment-level analysis focuses on an unbalanced panel of 9,575 private establishments for which there is enough information to compute the RTFP measure. This unbalanced panel accounts for around 64% of value added and 76% of employment of the full survey. For the sake of robustness, I also provide results for a balanced panel of continuing firms during the whole 1995-2007 period.

2.1.2 Input-Output Tables

To characterize sectors I use the 1996 Chilean Input-Output tables. I distinguish sectors in terms of how tradable their products are and in terms of how relevant is copper in their production processes. Similar to [Pavcnik \(2002\)](#), I determine the tradability of the industry's product according to the share that the industry's trade flows represent of the industry's output, i.e.:

$$\text{Tradability}_i = \frac{\text{Exports}_i + \text{Imports}_i}{\text{Output}_i}$$

⁶A unit of observation is a plant, not a firm, so the existence of multi-plant firms within the sample is possible. [Pavcnik \(2002\)](#) reported that approximately 90% of the plants are single-plant establishments for the 1979-1986 version of the survey. Unfortunately, for this issue of the survey there is no publicly available information on this matter.

⁷Provided by the National Institute of Statistics, INE in Spanish

⁸More details about TFP estimation in this case can be found in [Appendix A.1](#)

where i indexes industries. Hence, an industry's product will be non-tradable (NT) if $\text{Tradability}_i < 30\%$, and tradable (T) otherwise.⁹

To measure the sectoral cost exposure to the copper industry, I follow [Acemoglu et al. \(2015\)](#) and [Acemoglu et al. \(2016\)](#), and use the downstream coefficients associated to the Leontief inverse matrix. In the Chilean Input-Output tables these correspond to the terms found in the Matrix of Direct and Indirect Requirements, which are at the 2- and 3-digit ISIC level.¹⁰

To be more clear, let \mathbf{H} be the matrix that summarizes the shares that intermediate demand for each sector's output represent of the total value of production of each sector, i.e.:

$$\mathbf{H} = \begin{bmatrix} h_{11} & h_{12} & \dots & \\ h_{21} & h_{22} & & \\ & & \ddots & \\ & & & h_{JJ} \end{bmatrix}$$

where:

$$h_{ij} = \frac{\text{Sales}_{i \rightarrow j}}{\text{Sales}_j}$$

thus we can write:

$$\mathbf{S} = \mathbf{HS} + \mathbf{F}$$

where \mathbf{S} is the vector of total sectoral sales, Sales_i , and \mathbf{F} the vector of sectoral final demands, f_i . The Leontief inverse matrix, \mathbf{A} , is thus given by:

$$\mathbf{A} \equiv (\mathbf{I} - \mathbf{H})^{-1}$$

with typical entry a_{ij} . In this sense, a_{ij} represents the sector i 's production that is required to satisfy an additional unit of sector j 's final demand, f_j . Thus, I take the terms $a_{i,Cu}$ (upstream) and $a_{Cu,i}$ (downstream) associated to each manufacturing sector i in the tables relative to the copper industry (Cu). The downstream coefficients, $a_{Cu,i}$, will be the ones used to measure the importance of copper for firms' production processes.

⁹All results are robust to cutoff points between 20% and 45%.

¹⁰Level of aggregation is determined by that used in Chilean national accounts when reporting Input-Output tables

2.1.3 Copper Prices

Finally, to measure commodity price shocks, I use a yearly time series for the London Metal Exchange (LME) price of copper, in dollars per pound of copper, constructed from the monthly series published by the Central Bank of Chile. I calculate the May-to-May percent variation in the commodity price during the 1996-2006 period. The reason for choosing May as reference month is to make the yearly copper price change to coincide with the 12-month period that the ENIA covers. For robustness, I also provide results in which this copper price series is expressed in Chilean pesos and deflated by the domestic consumer price index.

2.2 Empirical Approach

I consider two main sources of variation for firms, both defined at the sectoral level: i) the tradability of the industry's product, and ii) the sector's cost exposure to the copper industry. These variables are intended to capture two channels of transmission of international price shocks on domestic firms. First, the change in aggregate demand that comes from the effect that the price shock has on households' budgets. And second, the propagation of the price shock through the production network.

In principle, if the commodity price shock represents an increase in the disposable income of households, households will demand more of all goods, which should disproportionately benefit firms in industries that sell a less tradable good, as domestic demand is a more important part of their customer base. On the other hand, firms in industries with a technology that uses directly or indirectly the commodity, should see themselves negatively affected in the case of a positive price shock.

I consider the following specification, based on [Pavcnik \(2002\)](#) and [Acemoglu et al. \(2015\)](#):

$$\begin{aligned} \Delta y_{fit} = & \alpha_0 + \alpha_1 \Delta \ln(PCu_t) \cdot \tilde{a}_{Cu,i} + \alpha_2 \Delta \ln(PCu_t) \cdot \mathbb{1}\{NT\}_i \\ & + \chi' \mathbf{Z}_{fit} + \rho_i + \kappa_t + \epsilon_{fit} \end{aligned} \quad (1)$$

where f indexes firms, i industries, and t time; Δy_{fit} is the yearly log change in a firm outcome; $\Delta \ln(PCu_t)$ is the yearly log change in the international price of copper; $\mathbb{1}\{NT\}_i$ is an indicator variable that takes the value of one if a firm belongs to an industry that sells a non-tradable product; $\tilde{a}_{Cu,i}$ is a normalized down-

stream Leontief inverse term with respect to the copper industry,¹¹ Z_{fit} is a vector of controls; ρ_i is a 4-digit ISIC-level industry fixed effect; and κ_t a time fixed effect. Controls include the interaction of the upstream Leontief inverse term with respect to the copper industry with the yearly log change in the price of copper, the interaction of this last interaction with the non-tradable dummy,¹² the interaction of the non-tradable dummy with the yearly log change in the price of copper and the downstream Leontief inverse term,¹³ and lagged firm's employment and RTFP. Errors are clustered at the 4-digit ISIC industry level.

There are two identifying assumptions that need to be made in order for (1) to provide unbiased estimates of α_1 and α_2 . The first one is that copper price shocks are driven by demand/supply shocks occurring in markets different from the Chilean manufacturing sector. This assumption is a plausible one, since Chile comprises a very small share of world output and is usually considered a small open economy. Furthermore, even though Chile is the biggest player in the world copper market (representing 28% of world output in 2019, according to the Chilean Copper Commission), it is very hard that developments in the Chilean manufacturing sector will create sensible movements in the world supply or demand for the metal. In the particular period under consideration, the most drastic movements in the price of the metal are related to the entry of China to international markets, an arguably exogenous event to Chilean developments.

The second assumption is that there are not any confounders that have the same trend of the copper price series and that differentially affect non-tradable and copper intensive industries, as defined in 1996. This is more difficult to sustain. First of all, sectoral characterization, even though it was fixed at practically the beginning of the sample, it is persistent over time. Non-tradable firms, in particular, should

¹¹Normalization is made in order to have comparable regression coefficients between the upstream and downstream directions, and it is performed considering just the terms in a given network direction. More details in Appendix A.2

¹²Results for the regressors containing the upstream terms are not reported in the main body of the paper, but in Appendix B. The reason is that most of these estimates are not statistically different from zero. This is consistent with results from Acemoglu et al. (2015) in which price shocks are akin to productivity shocks.

¹³These triple interactions are included to account for possible heterogeneous effects of demand shocks across sectors. For example, among non-tradable manufacturing sectors, sectors that are more cost exposed to the copper sector are also more important in households' consumption baskets. Examples include but are not limited to dairy, bakery products, and grain mill products.

differentially respond to any perturbation that affects households' budgets. Of particular concern are movements in nominal exchange rates and prices of other goods or inputs. Even though I have included the interaction of the log change in copper prices with the non-tradable dummy within the set of controls, which should partially correct for this problem, I have run this same specification but using a measure for the price of copper that is expressed in Chilean pesos and is deflated by the domestic consumer price index.¹⁴ As it will be clear in the next section, overall results are not affected by this change in regressors.

2.3 Results

2.3.1 Output, Inputs, and RTFP

The main regression results are presented in Table 1. I run specification (1) for 1-year differences and 4-year differences. The motivation is to inspect if there are any variations in terms of the magnitudes of the responses as the time horizon lengthens. We can observe in Panel A that, when the price of copper increases 1% in a year, conditional on an average cost exposure to the copper industry, the average firm in a non-tradable industry increases its output in approximately 0.66% relative to a similar firm in a tradable one. At the same time, firms with downstream Leontief inverse terms that are one standard deviation over the average decrease their output in 0.04%. Relative employment responses for non-tradable firms are weaker than in the case of output. For a 1% copper price shock, non-tradable firms with an average reliance on copper to produce feature 0.17% higher employment than similar tradable firms, whereas firms with one standard deviation larger Leontief inverse term do not display statistically significant responses. Jointly, these results point to a positive relative response to copper price shocks of labor productivity, measured as real output per worker, for non-tradable firms with an average reliance on copper, and a negative relative response of the same variable for firms in industries that rely more on copper to produce. These patterns are supported by what is found for RTFP. When the price of copper increases by 1%, non-tradable establishments with average cost exposure to the copper sector

¹⁴I could have used other deflators, such as an index of import prices, as in [Drechsel and Tenreyro \(2018\)](#), for example. I chose the Chilean CPI as it provides a closer counterpart with the units in which variables are denoted in the model to be laid out later in the paper. In any case, [Fernández et al. \(2018\)](#) also use a CPI measure to express real price shocks, in this case being the U.S. CPI.

have a 0.39% higher RTFP than similar tradable ones, and establishments in industries with a one standard deviation larger downstream Leontief inverse term feature 0.02% lower RTFP.

These results may be interpreted as that productivity, measured either as RTFP or real output per worker, increases for firms that are facing a bigger copper price-induced demand shock, and decreases for those that face a larger cost shock, such as tradable firms that rely more on copper as an input. On the other hand, the weaker results on employment relative to those on output suggest the existence of frictions to the adjustment of workers on the extensive margin, as firms that face bigger demand increases elevate their production levels without hiring proportionately more workers, and firms that face bigger cost shocks reduce their output without firing proportionately less workers. This conjecture is reinforced by the relative responses found for materials per worker. For a 1% copper price shock, non-tradable firms with an average reliance on copper display a 0.5% higher materials per worker ratio relative to tradable ones, while firms with a one standard deviation larger downstream term feature a 0.04% lower coefficient. Capital per worker, on the other hand, is actually 0.52% lower for non-tradable firms relative to tradable ones and does not show any significant reaction for firms that rely more on copper to produce. This points to materials as the most important observable input that is adjusted in the short run when faced with copper price induced perturbations, regardless of the exact transmission channel considered.

When I consider the same specification with four-year differences in Panel B, similar patterns for output, employment, and RTFP are observed. However, point estimates are larger on the NT/T margin. Notably, when the price of copper increases in 1%, conditional on an average reliance on copper to produce, employment in non-tradable firms is now 0.29% higher than employment in tradable ones. This is 0.12 percentage points higher than the estimate found in Panel A of Table 1. Additionally, estimates for capital per worker and materials per worker are no longer significant and they are smaller in magnitude for the NT/T margin (-0.42 vs. -0.52 and 0.32 vs. 0.50, respectively).

These longer-horizon responses reinforce the hypothesis of the existence of short-run costs to the adjustment of inputs on the extensive margin. As it is shown in Panel B, firms react to copper price induced demand shocks by hiring more workers and capital goods relative to the short-run scenario. In the case of cost

Table 1: Effects of Copper Price Shocks on Establishment-Level Gross Output, Inputs, and RTFP

	Output	Employment	Capital/ worker	Materials/ worker	RTFP
Panel A. 1-Year Diff.					
$\Delta \ln(PCu_t) \cdot \tilde{a}_{Cu,i}$	-0.04*** (0.01)	0.01 (0.01)	-0.01 (0.02)	-0.04*** (0.01)	-0.02** (0.01)
$\Delta \ln(PCu_t) \cdot \mathbb{1}\{NT\}$	0.66*** (0.12)	0.17** (0.07)	-0.52*** (0.21)	0.50* (0.27)	0.39*** (0.13)
Observations	31,504	31,504	31,504	31,504	31,504
Panel B. 4-Year Diff.					
$\Delta \ln(PCu_t) \cdot \tilde{a}_{Cu,i}$	-0.05** (0.01)	0.01 (0.01)	0.01 (0.04)	-0.06*** (0.01)	-0.02** (0.01)
$\Delta \ln(PCu_t) \cdot \mathbb{1}\{NT\}$	0.74*** (0.19)	0.29* (0.16)	-0.42 (0.40)	0.32 (0.30)	0.44** (0.20)
Observations	17,148	17,148	16,624	17,148	16,624
Industry and Time FE	Y	Y	Y	Y	Y
Firm-Level Controls	Y	Y	Y	Y	Y

Note: This table presents estimates of equation (1) for the 1995-2007 period. The dependent variable is the change in the natural log of the listed outcome. Firm-level controls are lagged age, employment, and RTFP, interactions of all the regressors included in the table, and analogous interactions for upstream coefficients. Robust standard errors in parentheses, clustered at the 4-digit industry-level. * $p < 0.1$, ** $p < 0.05$, *** $p < 0.01$

shocks, firms seem to rely even more on substituting away the materials that are intensive in copper than in the short-run case. This is expressed in the coefficient associated to the cost-exposure to copper in the materials per worker column, -0.06, which is significant and larger in magnitude than the analog one found in Panel A. The positive point estimate for employment found in the corresponding row in both tables supports this intuition.

2.3.2 Measures of Intensity of Input Usage

In Table 2 I present results related to some measures of intensity of input usage. In particular, I display the responses of the firm's average real wage, the number of workdays, and its real electricity and fuel consumption. Average real wage and workdays are meant to capture the intensity with which labor is used, while electricity and fuel consumption the intensity with which capital is utilized (as in Costello (1993), Burnside et al. (1995), and Burnside et al. (1996)). The average real wage is calculated as the total wage bill divided by the total number of workers and deflated by the industry-specific gross output deflator. The real electricity and fuel consumption correspond to the establishment's total electricity and fuel expenditures divided by the corresponding intermediate input deflator.

We can observe that average real wages track the movements in RTFP reported in the previous section. In Panel A, when the price of copper goes up by 1%, the average real wage increases in 0.34% for non-tradable firms with an average cost exposure to the copper sector, relative to similar tradable ones. At the same time, firms with a one standard deviation larger downstream term show 0.09% lower average real wages. The total number of workdays increases 0.11% for non-tradable firms relative to tradable ones, but does not sensibly react when firms have a bigger cost exposure to the copper sector. This is suggestive that when there is a copper price induced demand increase, non-tradable firms make their workers work harder relative to similar tradable firms, as the total number of days an average worker works in a year for a non-tradable firm is greater than for tradable ones. However, when there is a copper induced cost shock, there does not seem to be any impact on the fraction of the year a worker spends working.

Electricity and fuel consumption do not feature sensible differences between non-tradable and tradable firms, conditional on an average reliance on copper to produce, although point estimates are positive in both cases. On the cost exposure

Table 2: Effect of Copper Price Shocks on Establishment-Level Measures of Input Usage Intensity

	Avg. Real Wage	Workdays	Electricity Consumption	Fuel Consumption
Panel A. 1-Year Diff.				
$\Delta \ln(PCu_t) \cdot \tilde{a}_{Cu,i}$	-0.09*** (0.01)	0.00 (0.00)	-0.06*** (0.01)	-0.08*** (0.01)
$\Delta \ln(PCu_t) \cdot \mathbb{1}\{NT\}$	0.34* (0.18)	0.11*** (0.04)	0.24 (0.25)	0.52 (0.33)
Observations	31,504	31,482	31,269	27,443
Panel B. 4-Year Diff.				
$\Delta \ln(PCu_t) \cdot \tilde{a}_{Cu,i}$	-0.08*** (0.01)	-0.00 (0.00)	-0.10*** (0.02)	-0.11*** (0.04)
$\Delta \ln(PCu_t) \cdot \mathbb{1}\{NT\}$	0.44* (0.18)	-0.01 (0.07)	0.07 (0.25)	-0.35 (0.06)
Observations	17,148	17,135	17,025	14,403
Industry and Time FE	Y	Y	Y	Y
Firm-Level Controls	Y	Y	Y	Y

Note: This table presents estimates of equation (1) for the 1995-2007 period. The dependent variable is the change in the natural log of the listed outcome. Firm-level controls are lagged age, employment, and RTFP, interactions of all the regressors included in the table, and analogous interactions for upstream coefficients. Robust standard errors in parentheses, clustered at the 4-digit industry-level. * $p < 0.1$, ** $p < 0.05$, *** $p < 0.01$

margin, however, both indicators show statistically significant negative responses to copper price shocks. This is suggestive of a lower utilization of capital for firms that rely more on copper to produce when the price of copper goes up.¹⁵ Lower capital utilization could explain the lower average real wage rate for firms more reliant on copper to produce that is observed in the first column of the table. If labor and capital are complements, a lower amount of capital services should lead to a lower marginal productivity of labor, and a lower average real wage.

In terms of responses over a longer time horizon, we can appreciate in Panel B that the average real wage preserves the qualitative features found in Panel A, and closely tracks the responses of output and RTFP in Table 1. Also similar to what was found for yearly differences, outcomes for electricity and fuel consumption display no statistically significant responses on the NT/T margin, but significantly negative responses on the cost-exposure dimension. In this case, point estimates are even more negative than in Panel A (-0.10 vs -0.06 in the case of electricity, -0.11 vs. -0.08 in the case of fuel), which suggests that capital utilization is even lower as time horizons get longer. The most remarkable result here is that workdays now display no heterogeneous responses across firms based on the two dimensions considered. Since employment reactions on the T/NT margin were larger on a 4-year horizon than in a 1-year one, this can be indicative of firms reducing the use of additional workdays to satisfy demand increases in order to rely more on new workforce members. In this sense, the observed movements in average real wage could reflect variations in work effort on a per workday basis.

2.3.3 Robustness Tests and Summary of Results

In Appendix B, I present more detailed results and a full set of robustness tests. In Appendix B.1 I display the estimates for those controls that are omitted in the tables within the main body of the paper. We can appreciate in Tables B.1.1 and B.1.2 that copper price shocks tend to not propagate upstream, a result that it is in line with the theoretical and empirical findings of Acemoglu et al. (2015), who state that supply-side shocks only propagate downstream in a closed-economy context. In the case under consideration in this paper, an exogenous increase in the price of

¹⁵Actually, in the 1996 Input-Output tables, the five sectors most reliant on copper to produce are Basic Precious and Non-Ferrous Metals, Electrical Machinery and Apparatus, Fabricated Metal Products, Basic Chemicals, and Basic Iron and Steel. All strongly capital-intensive industries.

copper corresponds to a supply shock for those manufacturing firms downstream the copper industry. For those local firms that are upstream the copper industry two things may be happening. One of them is that they sell tradable products and the world prices for them has not changed, so even though the copper industry may be demanding more inputs, the received price does not incentivize these firms to supply more of them, so the copper industry brings them from abroad. The other possibility is that the copper industry, given the nature of the extraction process, does not respond to one-year changes in the price of the metal because the time it takes to extract the mineral is too long to take advantage of the opportunity.¹⁶ This last conjecture would be coherent with the tenuous positive effects found for some variables such as materials per worker, employment, and electricity and fuel consumption for the regressions with 4-year differences.

In Appendix B.2.1 I run the same regressions but after estimating RTFP via the [Olley and Pakes \(1996\)](#) method. I consider a Cobb-Douglas production function in capital, materials, production workers, and non-production workers. Results do not change much in qualitative and quantitative terms and, if anything, reinforce the interpretation of frictions to the adjustment of employment in the short-run. In Appendix B.2.2, to account for the possible joint movement of the international price of copper with other variables that may disproportionately affect non-tradable industries relative to tradable ones, such as exchange rates and prices of other goods and inputs, I use a modified copper price series. I express the LME price of copper in Chilean pesos using the average annual nominal exchange rate, as reported by the Central Bank of Chile, and deflate this modified series by the Chilean consumer price index. The idea is to obtain a real price of copper, net of variations on other prices, that can account more accurately for the effect of changes in the price of the metal on firms producing non-tradables relative to those producing tradables. Results are robust to this modification. Notably, patterns related to output per worker and RTFP are preserved, and even though employment responses are somewhat stronger in the short run than in the base-line specification, the point estimate in the short run on the non-tradable/tradable margin is still smaller than in the long-run. To evaluate the magnitude of the possible biases that using an unbalanced panel might entail for my results, in Appendix

¹⁶Actually, copper, just like many other commodities such as oil, is commonly traded in future contracts where the transaction price is set long before extraction occurs.

B.2.3 I provide estimates for a balanced panel of 1,319 firms that were present during the entire 1995-2007 period. Once again, patterns do not change much and, if anything, reinforce the conjecture about short-run frictions in the reallocation of labor. Finally, in Appendix **B.2.4** I evaluate how important is the choice of an empirical specification in differences for the results obtained. I estimate the same regression but in levels and adding firm fixed effects, once again finding similar results overall.

I will summarize the main findings of this empirical section as follows:

1. The labor productivity and RTFP of firms in non-tradable industries, relative to those of similar firms in tradable industries, are positively correlated with copper price shocks
2. The relative labor productivity and RTFP of firms that rely more on copper to produce is negatively associated with copper price shocks
3. Conditional on a copper price shock of the same size, the 4-year employment responses of firms in non-tradable industries, relative to firms in tradable ones, are larger than the 1-year responses
4. Measures of factor utilization tend to track the patterns observed for RTFP and labor productivity

3 Theoretical Framework

In this section, I move to a theoretical analysis of the interaction between frictions to the reallocation of factors, variable factor utilization, and sectoral heterogeneity to interpret my empirical results. My goal is to clarify how the degree of comparative advantage in the production of the good that is facing an exogenous price shock (in this case, copper) and the size of the non-tradable sector affects the transmission of price shocks to aggregate TFP through the factor utilization channel. Booms and busts in commodity prices have heterogeneous effects over the tradable and non-tradable margin and over firms with different reliance on the commodity to produce. Importantly, the model features Dutch disease type of responses by non-commodity tradable firms, but an association between price shocks and aggregate TFP that not necessarily goes in the same direction.

The starting point is a standard networks model based on [Long and Plosser \(1983\)](#), which I embed in a small open economy framework. I add quasi-fixity of primary factors and the possibility for varying factor utilization by firms. Price shocks are the only source of perturbations in this economy.

3.1 Set Up

This is a small open economy consisting of J sectors, of which J^T produce internationally traded goods while J^{NT} produce non-tradable goods ($J^T + J^{NT} = J$). Firms in each sector produce by combining labor, capital services, and intermediates coming from all J sectors of the economy. There is also an infinitely lived representative household that consumes a composite, C_t , made of goods produced in every sector of the economy, and that has access to an internationally traded risk-free bond, B_t , to smooth consumption over time. The economy is subject to stochastic shocks to the price of internationally traded goods. Price shocks are the only source of randomness in this environment

3.2 Households

Households derive utility from consuming a consumption composite, C_t , disutility from supplying hours to each sector-specific labor market, $\{N_{jt}\}_{j=1}^J$, and disutility from exerting effort per hour worked in each sector-specific labor market, $\{e_{jt}\}_{j=1}^J$. Household's lifetime expected utility will be given by:

$$U_0 = \mathbb{E}_0 \left[\sum_{t=0}^{\infty} \beta^t \frac{u \left(C_t, \{N_{jt}\}_{j=1}^J, \{e_{jt}\}_{j=1}^J \right)^{1-\sigma}}{1-\sigma} \right] \quad (2)$$

where $\sigma > 0$ and:

$$u \left(C_t, \{N_{jt}\}_{j=1}^J, \{e_{jt}\}_{j=1}^J \right) = C_t - \sum_{j=1}^J \frac{N_{jt}^{1+\psi_n}}{1+\psi_n} - \chi \sum_{j=1}^J N_{jt} \frac{e_{jt}^{1+\psi_e}}{1+\psi_e} \quad (3)$$

with χ , ψ_n , and $\psi_e > 0$. This utility function specification is a variation of the [Greenwood et al. \(1988\)](#), GHH from now on, type of preferences, which eliminates the wealth effect on labor supply. I extend their specification by adding an effort disutility component. This component is convex in its argument, e_{jt} , has convexity parameter ψ_e , and is weighted by the relative disutility factor χ and the current

amount of sector-specific hours supplied, N_{jt} . Similar to the standard GHH preferences, wealth effects on any of hours or effort per hour supplied to each industry are eliminated.

The consumption composite, C_t , is a Cobb-Douglas aggregator of consumption of each sector's good:

$$C_t = \prod_{j=1}^J C_{jt}^{\alpha_j}, \quad \alpha_j \in [0, 1] \quad (4)$$

The consumption composite will be the numeraire of this economy. Hence, the solution to the static problem of getting one unit of the consumption composite at the minimum cost will imply:

$$1 = \prod_{j=1}^J \left(\frac{P_{jt}}{\alpha_j} \right)^{\alpha_j} \quad (5)$$

It can be verified that $\sum_{j=1}^J P_{jt} C_{jt} = C_t$. Households have access to an internationally-traded risk-free bond, B_t , denominated in domestic consumption composite units. The budget constraint of the household is as follows:

$$B_{t+1} + \sum_{j=1}^J P_{jt} C_{jt} = (1 + r_t) B_t + \sum_{j=1}^J w_{jt} e_{jt} N_{jt} + \sum_{j=1}^J \pi_{jt} \quad (6)$$

where r_t is the interest-rate international bonds bear, w_{jt} is the wage per labor service unit paid in sector j , and π_{jt} are the profits generated by sector j firms

To provide a meaningful role to labor effort, it will be assumed, as in [Huo et al. \(2020\)](#), that households choose the amount of hours to supply to each sector before shocks are realized. This is to say that there is quasi-fixity of hours employed in each sector within a period, so that the only margin over which the labor input can be adjusted is via labor effort.¹⁷ This quasi-fixity can reflect hiring/firing costs or the time it takes to build a fully functional workforce.

¹⁷An alternative specification would have been to place the effort choice on firms. In this case, firms would directly decide how much effort to extract from households and would internally adjust compensation to that end. The results in this model are isomorphic to the specification considered in this paper.

The problem of the household can then be summarized as follows:

$$\begin{aligned}
V(B_t, \{N_{jt}\}_j) &= \max_{\mathbf{v}_t} \frac{u(C_t, \{N_{jt}\}_j, \{e_{jt}\}_j)^{1-\sigma}}{1-\sigma} + \beta \mathbb{E}_t [V(B_{t+1}, \{N_{j,t+1}\}_j)] \\
\text{s.t. } B_{t+1} + \sum_{j=1}^J P_{jt} C_{jt} &= (1+r_t)B_t + \sum_{j=1}^J w_{jt} e_{jt} N_{jt} + \sum_{j=1}^J \pi_{jt} \\
C_t &= \prod_{j=1}^J C_{jt}^{\alpha_j}
\end{aligned} \tag{7}$$

where $\mathbf{v}_t = \{B_{t+1}, \{C_{jt}\}_{j=1}^J, \{e_{jt}\}_{j=1}^J, \{N_{j,t+1}\}_{j=1}^J\}$.

3.3 Firms

Firms are classified as belonging either to the group of sectors that produce tradable goods, \mathcal{J}^T , which has cardinality J^T , or to the group of sectors that produce non-tradable goods, \mathcal{J}^{NT} , that has cardinality J^{NT} .

Firms produce with sector-specific, constant returns to scale, Cobb-Douglas technologies that use labor, capital services, and intermediates from all sectors. Thus, a sector j firm features the following production function:

$$Y_{jt} = Z_j (u_{jt} K_{jt})^{\gamma_{jk}} (e_{jt} N_{jt})^{\gamma_{jn}} \prod_{i=1}^J M_{ij,t}^{\varphi_{ij}}, \quad \gamma_{jk}, \gamma_{jn}, \varphi_{ij} \in [0, 1] \tag{8}$$

with $\sum_{i=1}^J \varphi_{ij} = 1 - \gamma_{jk} - \gamma_{jn}$, and where u_{jt} is capital utilization, K_{jt} is capital stock, e_{jt} is effort per hour worked, N_{jt} is hours employed, and $M_{ij,t}$ is the amount of materials sector j purchases from sector i .

The firm demands raw labor input, which in equilibrium is equal to the product of total hours employed in a sector and the effort per employed hour, $L_{jt} = e_{jt} N_{jt}$. As it was said in section 3.2, hours worked, N_{jt} , are assigned to each sector before shocks are realized. However, it is assumed firms are not aware of this. In this sense, the firm is indifferent with respect to the exact hours-effort per hour mix (e_{jt}, N_{jt}) , and offers a sector-specific wage, w_{jt} , in order to lure in just a certain amount of labor input, L_{jt} , without looking at how that labor input is being generated¹⁸ It is important to note that the firm manager has the ability to induce

¹⁸One can think of this assumption as if the firm were offering a piece rate compensation scheme. A higher output per worker can be obtained if the worker either works for longer hours or works harder per unit of time. If there are no other associated direct costs with each option, the employer is indifferent with respect to which method the worker used. She only cares about her total output.

households to provide the desired level of effort per hour if needed. This is not equivalent to say that the manager observes the households' effort, but rather that it can design a contract in which households are incentivized to provide more or less effort, and that that effort can be implicitly monitored through an observable variable such as output. In this margin, the firm managers operate just as the econometrician of section 2, just observing output and the amount of hours used in the process.

In summary, if firms need to respond to a certain demand increase, they will increase wages per hour worked, waiting for households to provide more labor input. As households will not react but on the hours margin but with a lag, they will work harder every hour that they are currently working in the firm. A higher output is rewarded with a subsequent higher wage per hour. The effort response depends on the wage elasticity of effort, $1/\psi_e$. The only agents that observe effort are households themselves.

Capital stock is accumulated by firms via the reinvestment of operational profits. To invest, firms have to purchase a sector-specific investment good, I_{jt} . This investment good is produced with the sector's own output in a one-to-one fashion. Investment choices have to be made one period in advance, so the capital stock is fixed within a period. As in the case of labor effort, when faced with a shock, firms can only change the amount of capital services they have by adjusting the utilization rate of their current capital stock, u_{jt} . Materials and labor service units are fully flexible inputs from the firm's perspective.¹⁹

Following Greenwood et al. (1988), it will be assumed that a higher capital utilization rate implies a higher depreciation rate. Let δ_j denote the sector-specific depreciation rate. Hence, δ_j and u_{jt} are related according to the following convex function:

$$\delta_j = \bar{\delta} \frac{u_{jt}^{1+\psi_u}}{1+\psi_u} \quad (9)$$

where $\bar{\delta}$, and ψ_u are positive. In this case, and in opposition to the situation of labor effort, firm managers do observe how much they utilize capital. As it is clear from (9), the strength of the capital utilization response to a demand/supply shock will depend on the convexity term, ψ_u . Households, on the other hand, do not directly

¹⁹This would align with the assumptions needed to implement the Olley and Pakes (1996) methodology. However, in equilibrium firms will do face a less than fully flexible labor input, which would invalidate the procedure.

observe the capital utilization rate of firms. They only observe the wage per hour they earn. Finally, the econometrician, just like with labor effort, only observes the capital stock.

It is a typical feature of small open economy models that investment rates are too volatile because of the weak response of interest rates to changes in this variable. For this reason, I will assume that firms face quadratic capital adjustment costs in terms of the sectoral good and, thus, smooth investment rates over time. The functional form for the capital adjustment costs is given by:

$$\frac{\tau}{2} (K_{jt+1} - K_{jt})^2$$

where $\tau > 0$.

Therefore, the problem of a sector j firm can be stated as follows:

$$\begin{aligned} \mathcal{V}_{jt}(K_{jt}) &= \max_{\mathbf{x}_{jt}} \pi_{jt} + \frac{1}{1+r_{t+1}} \mathbb{E}_t [\mathcal{V}_{jt+1}(K_{jt+1})] \\ \text{s.t. } \pi_{jt} &= P_{jt}Y_{jt} - w_{jt}L_{jt} - \sum_{i=1}^J P_{it}M_{ij,t} - P_{jt} \left(I_{jt} + \frac{\tau}{2} (K_{jt+1} - K_{jt})^2 \right) \\ Y_{jt} &= Z_j(u_{jt}K_{jt})^{\gamma_{jk}} L_{jt}^{\gamma_{jm}} \prod_{i=1}^J M_{i,j,t}^{\varphi_{ij}} \\ K_{jt+1} &= I_{jt} + (1 - \delta_{jt})K_{jt} \\ \delta_{jt} &= \bar{\delta} \frac{u_{jt}^{1+\psi_u}}{1 + \psi_u} \end{aligned} \tag{10}$$

where $\mathbf{x}_{jt} = \{L_{jt}, u_{jt}, \{M_{ij,t}\}_{i=1}^J, I_{jt}\}$

3.4 Endogenous Interest Rate Premium and Copper Price Shocks

3.4.1 Interest Rate Premium

As the steady-state in stochastic small-open economy models depends on initial conditions,²⁰ I will follow [Schmitt-Grohé and Uribe \(2003\)](#) and assume that the interest rate on internationally-traded bonds faced by domestic households is composed of the international interest rate, r^* , and a premium that is a function of the

²⁰This implies that transitory shocks have permanent effects. For this reason, equilibrium dynamics display a random walk behavior, so the unconditional variance of variables such as assets and consumption tends to infinity.

amount of bonds, B_t , the household holds:

$$1 + r_t = 1 + r^* + \phi(\exp\{\bar{B} - B_t\} - 1) \quad (11)$$

where $\phi > 0$ and \bar{B} is the steady-state bond holdings level.

3.4.2 Copper Price Shocks

Copper prices will be the only source of perturbations in this economy. They will display a stochastic behavior corresponding to an AR(1) process in logs:

$$\log(P_{Cu,t}) = \rho_{Cu} \log(P_{Cu,t-1}) + \varepsilon_{Cu,t} \quad (12)$$

where $\varepsilon_{Cu,t} \sim \mathcal{N}(0, \sigma_{Cu}^2)$

3.5 Equilibrium

An equilibrium in this economy is a sequence of allocations:

$$\left\{ B_{t+1}, \left\{ C_{jt}, e_{jt}, N_{jt+1}, u_{jt}, L_{jt}, \{M_{ij,t}\}_{i=1}^J, I_{jt} \right\}_{j=1}^J \right\}_{t=0}^{\infty}$$

and prices: $\{\{P_{jt}\}_{j \in \mathcal{J}^{NT}}, r_t\}_{t=0}^{\infty}$ such that, given international prices for non-copper tradable sectors, $\{P_{jt}\}_{j \in \mathcal{J}^T | j \neq Cu}$, a stochastic process for the international copper price, $\{P_{Cu,t}\}$, dictated by (12), an international interest rate, r^* , and initial values $\{N_{j,0}, K_{j,0}\}_{j=1}^J$ and B_0 :

1. Households solve (7)
2. Firms in each sector solve (10)
3. Labor markets clear:

$$L_{jt} = e_{jt} N_{jt}, \quad \forall j = 1, \dots, J \quad (13)$$

4. Non-tradable markets clear:

$$C_{jt} + I_{jt} + \frac{\tau}{2} (K_{jt+1} - K_{jt})^2 + \sum_{i=1}^J M_{j \rightarrow i,t} = Y_{jt}, \quad j \in \mathcal{J}^{NT} \quad (14)$$

5. The balance of payments condition holds:

$$B_{t+1} + \sum_{j=1}^J P_{jt} \left(C_{jt} + I_{jt} + \frac{\tau}{2} (K_{jt+1} - K_{jt})^2 + \sum_{i=1}^J M_{i \rightarrow j,t} \right) = (1 + r_t) B_t + \sum_{j=1}^J P_{jt} Y_{jt} \quad (15)$$

3.6 Factor Utilization in a Restricted Model

In this section, I use a restricted version of the model just described and focus on an arbitrary period. The main goals here are to convey in the simplest possible way the main insights behind the full model laid out in section 3.5, and transparently illustrate how variable factor utilization can rationalize the patterns observed in the empirical section of the paper. There are three sectors. Two of them, called T and NT , produce final consumption goods. The remaining sector is a commodity producing industry, Cu . Goods Cu and T are tradable and perfectly substitutable with foreign varieties, while good NT is non-tradable. Trade will be balanced each period.

There is no capital, $\gamma_{jk} = 0 \forall j$. Labor is the only primary production input,²¹ while the commodity is an intermediate input for both sectors.

The household's period budget constraint is given by:

$$C_{T,t} + P_{NT,t}C_{NT,t} = w_{T,t}e_{T,t}N_{T,t} + w_{NT,t}e_{NT,t}N_{NT,t} + \sum_{j=\{T,NT,Cu\}} \Pi_{j,t} = E_t \quad (16)$$

where, for convenience, good T is the numeraire, so $P_T = 1$

From the representative household's optimization problem, we get that the demand functions for T and NT goods are:

$$C_{T,t} = \alpha E_t \quad (17)$$

$$C_{NT,t} = (1 - \alpha) \frac{E_t}{P_{NT,t}} \quad (18)$$

While the optimal effort supply choice per sector is given by:

$$e_{j,t} = w_{j,t}^{\frac{1}{\psi_e}} \quad (19)$$

where $1/\psi_e$ is the wage elasticity of labor effort.

In the Cu sector it will be assumed that firms, in order to produce, only use a sector-specific commodity endowment $\bar{C}u$ (no alternative use in other sectors)

²¹I could have also included capital with its own utilization rate, but given that I assume a Cobb-Douglas production function, utilization rates of both inputs would have positively co-moved when the firm is faced with demand shocks or shocks to the commodity price. So unless the shock to the price of the commodity affects the relative cost of capital and labor, which is not the case in this environment, adding capital would have complicated the exposition without changing the main results. Plus, the main results from the empirical section do not talk about capital.

according to a linear production function, $Y_{Cu} = \bar{C}u$.²² Total industry profits are therefore going to be $\Pi_{Cu} = P_{Cu}\bar{C}u$, where P_{Cu} is the international price of Cu .

The solution to the firm's problem generates the following materials and labor demand functions:

$$M_{Cu,j;t} = \frac{(1 - \gamma_{nj})P_{j,t}Y_{j,t}}{P_{Cu,t}} \quad (20)$$

$$L_{j,t} = \frac{\gamma_{nj}P_{j,t}Y_{j,t}}{w_{j,t}} \quad (21)$$

If we combine the labor demand function (21) with the household's effort supply function (19), we obtain the following relation between labor utilization and sectoral revenues, $P_{j,t}Y_{j,t}$:

$$e_{j,t} = \left[\gamma_{nj} \frac{P_{j,t}Y_{j,t}}{N_{j,t}} \right]^{\frac{1}{1+\psi_e}} \quad (22)$$

We can appreciate that labor effort is an increasing function of revenues, $P_{j,t}Y_{j,t}$ and a negative one of the current number of hours hired, $N_{j,t}$. Furthermore, the response of effort to each one of these variables depends positively on the wage elasticity of effort, $1/\psi_e$. It is important to remind that effort per hours, $e_{j,t}$, is not directly observed by neither firms nor the econometrician. Revenues, $P_{j,t}Y_{j,t}$, and hours worked, $N_{j,t}$, are. Hence, according to this restricted model, whenever we observe an increase in revenues per hour worked, we should infer that effort is increasing as well.

Similarly, as in the real world we only observe the number of workers/hours worked, $N_{j,t}$, and the intermediate consumption, $M_{j,t}$, per the TFP measurement procedure performed in Section 2, we have:

Definition 1. *Measured sectoral TFP, $TFP_{j,t}$, is given by:*

$$TFP_{j,t} = \frac{Y_{j,t}}{N_{j,t}^{\gamma_{nj}} M_{Cu,j;t}^{1-\gamma_{nj}}} = Z_j e_{j,t}^{\gamma_{nj}} \quad (23)$$

where γ_{nj} is both the output elasticity of labor and the labor cost share of output.

²²Of course, the commodity producing sector could also use labor and intermediates coming from sectors T and NT . However, considering a more complete production function would not add much to the analysis and would unnecessarily complicate it. The crucial thing that is needed is a positive relation between profits in the commodity industry and commodity prices, and this is the easiest way of getting it. Plus, papers such as [Fernández et al. \(2018\)](#) have used a similar modeling strategy.

We can appreciate that any variation in input use gets loaded onto sectoral measured total factor productivity. It is important to note that this result is robust to allowing for production functions that display returns to scale that are not constant. As long as factor utilization cannot be totally corrected for with observable variables, some variation of it will be reflected in measured TFP. It is important to note that here I talk of TFP and not RTFP, as it was the case in the empirical section. The reason is that as I am abstracting from any within sector heterogeneity, the real world counterpart of a sector j firm's revenues can be any of sector j 's average revenues or sector j 's aggregate revenues. In both situations, and as long as firm-level price variations are washed out at the sectoral level, I can eliminate sectoral price variations by making use of the industry-specific price deflator, thus obtaining a quantity-based TFP measure and not a RTFP one.

3.6.1 Results

Let me consider a change in $P_{Cu,t}$. I will start characterizing the responses of tradable firms that rely more on copper in their production processes.²³

Proposition 1. *In sector T , firms' output ($Y_{T,t}$), TFP $_{T,t}$, and factor utilization ($e_{T,t}$) will be smaller the higher is $P_{Cu,t}$, with this response being stronger the larger the reliance on the commodity to produce $1 - \gamma_{nT}$.*²⁴

Proof. See Appendix C. ■

Thus, if there is a considerable friction for adjusting the workforce on the extensive margin, but there is the possibility of adjusting it on the intensive margin via

²³Of course, here the parallel is not perfect. The term $\tilde{a}_{Cu,i}$ that was used in the empirical section is a Leontief inverse coefficient, that comprises direct and indirect effects that propagate through a whole array of input-output linkages. In this model, instead, there is just one downstream linkage from Cu to each other sector. Nonetheless, adding more upstream and downstream linkages would not change the main message that I am trying to convey here, which is that the downstream propagation of commodity price shocks has harmful effects on tradable firms, and which are larger the more important is the commodity for them to produce.

²⁴Note that the derivative does not consider the effect of increasing the output elasticity of materials on the output elasticity of labor, even though in this simple setup they should both add up to one. The reason for doing this is that it does not affect the main result and that in the general quantitative setting there are no restrictions on the degree of returns to scale that manufacturing firms have.

varying labor effort, firms will do it. As a consequence, when there is a commodity price shock, firms in tradable sectors that rely on the commodity to produce will reduce output by cutting on wages to workers, who in turn will reduce their labor effort. The lower productivity per hour worked will show itself as a lower measured TFP. At the same time, firms that produce with more commodity intensive technologies will be disproportionately negatively affected by an increase in the price of that commodity. Therefore, they will display a disproportionately bigger fall in TFP relative to comparable firms. This is consistent with listed results 2 and 4 in Section 2.3.3, where firms in tradable sectors that relied more on copper to produce displayed disproportionately lower RTFP and output when the price of copper increased, but no differential response in terms of employment.

The behavior of firms in the non-tradable sector, on the other hand, depends crucially on the behavior of the economy's aggregate income, E_t . A higher aggregate income is translated into a higher consumption of tradable, T , and non-tradable, NT , goods. Domestic tradable production depends on the international price of the good, which is exogenously determined, so changes in domestic demand do not directly affect the production decisions of firms in this sector. This is not the case with the NT sector, whose only customers are domestic residents. Hence, any change in national income will fully impact firms there. For this reason, it is necessary to establish the circumstances under which an increase in the price of the commodity, P_{Cu} , induces a correspondingly higher aggregate income. As sectors other than Cu use Cu in their production processes, it is possible that an increase in the price of the commodity will make production in these other sectors so expensive, that the income windfall in the Cu sector is more than offset by the loss in production happening in the rest of the economy. At the same time, the cost pressure that firms selling non-tradables and that use the commodity face when P_{Cu} goes up could make them reduce their production. The following lemma establishes when an increase in the price of the commodity implies a higher expenditure on non-tradables and when a higher non-tradables' output.

Lemma 1. *Let $\phi_{j,t}$, $j = Cu, T, NT$ be the GDP share of sector j at time t . If:*

$$\frac{\phi_{Cu,t}}{\phi_{T,t}} > \frac{(1 - \gamma_{n,T})(1 + \psi_e)}{\gamma_{n,T} \psi_e}$$

then $dE_t/dP_{Cu,t}$, $de_{NT,t}/dP_{Cu,t}$, and $dTFP_{NT,t}/dP_{Cu,t} > 0$, while if

$$\frac{\phi_{Cu,t}}{\phi_{T,t}} > \frac{(1 - \gamma_{n,T} + \psi(1 - \gamma_{n,NT}))(1 + \psi_e)}{\gamma_{n,T}\gamma_{n,NT} \psi_e}$$

then $dY_{NT,t}/dP_{Cu,t} > 0$

Proof. See Appendix C. ■

It is clear that what is needed for generating a positive aggregate income effect is that the relative importance of the commodity producing sector to that of the other sectors selling tradables be larger than a certain threshold. This threshold is determined by the importance of the commodity for firms in sector T , $1 - \gamma_{n,T}$, and by the wage effort elasticity, $1/\psi_e$. The larger $1 - \gamma_{n,T}$, the bigger is the cost pressure induced by a higher commodity price on firms selling non-commodity tradables, so the larger the production reduction and the loss of income coming from this sector. On the other hand, a larger $1/\psi_e$ implies that a lower wage will induce a sharper decline in effort by households, so production and productivity in sectors selling non-commodity tradables should fall more strongly. In summary, the country must have a strong comparative advantage in commodity production if it stands to benefit from higher commodity prices.

We can also observe that the condition for having an actual non-tradable output increase is more stringent than that for having an increase in revenues and TFP from non-tradables. The reason for this is that the more important is the commodity for the production processes of firms selling non-tradables, the more expensive it gets to produce when the price of the commodity goes up. In this way, a larger demand increase is needed in order to compensate for this cost pressure.

In Section 2 it was also highlighted the positive output and RTFP responses to copper price shocks of firms selling non-tradables relative to that of similar firms producing tradables, at the same time that there was a weaker relative employment response. In this restricted model, the instantaneous employment response is totally muted. However, the intuition carries on if we allowed for a less stark assumption. In this way, conditional on cost structure, the impact of commodity-price induced demand shocks on firms selling non-tradables versus firms selling tradables is as follows:

Proposition 2. *If $\gamma_{n,T} = \gamma_{n,NT}$, and*

$$\frac{\phi_{Cu,t}}{\phi_{T,t}} > \frac{(1 - \gamma_{n,T} + \psi(1 - \gamma_{n,NT})) (1 + \psi_e)}{\gamma_{n,T}\gamma_{n,NT} \psi_e}$$

sector NT firms' output, TFP, and factor utilization responses to changes in PCu are going to be larger than those of sector T firms.

Proof. See Appendix C. ■

We can appreciate that this theoretical result is consistent with what was found in the listed empirical results 1. and 3. of section 2.3.3. Output per worker and RTFP disproportionately increase for firms selling non-tradables relative to similar firms selling tradables.

The motivating fact for this paper is the positive co-movement between aggregate TFP and commodity prices. The restricted model can also directly speak to this aggregate pattern and establish conditions under which one should see it happening. An important and convenient simplifying assumption made here is that sector-specific hours, which is the only primary production input, are fixed. Thus, any change in real GDP, which here it corresponds to a change in E when keeping prices fixed, will be equivalent to a change in aggregate TFP if we measure aggregate TFP as the ratio between total value added and hours to the power of a macro output elasticity.

Proposition 3. *If:*

$$\frac{\phi_{Cu,t}}{\phi_{T,t}} > \frac{(1 - \gamma_{n,T} + \psi_e(1 - \gamma_{n,NT})) (1 + \psi_e)}{\gamma_{n,T}\gamma_{n,NT} \psi_e}$$

and:

$$\phi_{NT,t} > \frac{(1 - \gamma_{n,T})(1 + \psi_e)^2}{\gamma_{n,T}\psi_e \left[\frac{\phi_{Cu,t}}{\phi_{T,t}}\gamma_{n,NT} - (1 + \psi_e) \left(1 - \frac{\gamma_{n,NT}}{\gamma_{n,T}}\right) \right]}$$

then $dE_t^{real} / dP_{Cu,t} > 0$, where E_t^{real} is real GDP.

Proof. See Appendix C. ■

Thus, in addition to the condition from Proposition 2 for having an increase in non-tradables' output, we need that the GDP share of sectors producing non-tradables be larger than a certain value. This threshold value is more demanding the larger the relative reliance on commodities between the sector that sells non-commodity tradables and the sector that sells non-tradables, the smaller the effort wage elasticity, and the smaller the importance of the commodity industry in the whole tradable bundle. If sector T relies more on the commodity to produce, firms there will reduce production and productivity more strongly when commodity prices go up. At the same time, if it is harder to extract effort from households, productivity in sector NT will not go up enough to compensate for any eventual

loss of output due to higher costs. Finally, if $\phi_{Cu,t}/\phi_{T,t}$ is smaller, then any increase in $P_{Cu,t}$ will not generate a large income effect on households, so it will be harder to generate the necessary increase in aggregate income to make firms selling non-tradables produce more and get more productive. In summary, to match the micro- and macro-patterns we need that the country concentrates its tradable production in the commodity producing industry and that the sector producing non-tradables has an important participation in GDP.

In the next section I will calibrate the full model to incorporate more realistic features that will allow me to gauge the quantitative relevance of the factor utilization mechanism in a stochastic business cycle setup.

4 Quantitative Analysis

In this section I will evaluate the predictions of the model with respect to key aggregate variables when the model is fed with realistic copper price shocks. Special attention will be placed on the behavior of aggregate TFP and real GDP, which are the two variables highlighted in Figure 1 in the Introduction.

4.1 Calibration

I set $\sigma = 2$, which is a standard value in the open-economy literature that features GHH preferences (see Drechsel and Tenreyro (2018), for example). I will normalize the relative distaste for hours worked relative to effort per hour, χ , to 1, as it does not affect the dynamics of the model. The parameter that rules the elasticity of the domestic interest rate with respect to international asset holdings, ϕ , will be set to 0.0001, a value in line with Schmitt-Grohé and Uribe (2003) and Fernández et al. (2018). The capital adjustment costs parameter, τ , will be set to 6, a value slightly larger than commonly used in the literature, but that is in line with other papers that feature multiple sectors in a small open economy framework, such as Drechsel and Tenreyro (2018). For the inter-temporal discount factor I choose $\beta = 0.96$, in order to match a steady-state international interest rate, r^* , of 4%. The depreciation rate parameter, $\bar{\delta}$, will be set to generate a steady state capital utilization rate equal to 1. The total number of sectors, J , will be equal to 43, which corresponds to a slightly coarser classification of sectors than the one used in the 1996 Chilean Input-Output Tables. Of these 43 sectors, and following the definition

of non-tradability used in Section 2, 29 industries will sell tradable goods, and 14 will sell non-tradables. More details about the classification procedure can be found in Appendix D.²⁵ The steady-state level of internationally traded bonds, \bar{B} , will be set to match the 1996 trade balance share of GDP, which is equal to -1.6%. The parameter that rules the convexity of the depreciation rate with respect to the capital utilization rate, ψ_u , will match a steady state depreciation rate equal to 10%, a value typically used in the business cycle literature.

The parameters α_j , γ_{jk} , γ_{jn} , and φ_{ij} are chosen to match the model-predicted expenditure and cost shares to those observed in 1996 I-O tables. Final consumption shares, α_j , are chosen so that the model's steady-state consumption choices are proportional to the amount that the industry sells to consumers or the government. For simplicity, they are restricted to sum to 1. The output elasticities of labor, γ_{jn} , are set to match the sectoral wage bill/gross output ratio. Similarly, intermediate purchase shares, φ_{ij} , will be set to match the sector j 's output share of the corresponding intermediate purchases of sector i by sector j firms. Capital output elasticities, γ_{jk} , will just be equal to $1 - \gamma_{jn} - \sum_{i=1}^J \varphi_{ij}$.

Steady-state final good prices, P_j , will be all normalized to one. TFP parameters, Z_j , on the other hand, will be set to match the value-added-based GDP shares of each sector in the 1996 Input-Output tables and a steady-state value for GDP of 1.

The parameters ψ_e and ψ_n will be chosen in order for the model to match some key coefficients of the 1-year empirical regressions shown in Section 2. Specifically, I will target the estimate of the coefficient associated to the interaction of the dummy that defines an industry product as non-tradable, $\mathbb{1}\{NT\}$, and the log-change in the international price of copper, $\Delta \ln(PCu_t)$, which corresponds to α_2 in equation (1). I will use the estimate found for the RTFP regression in setting ψ_e , while I will use the result of the employment regression to assign a value to ψ_n .

Finally, the parameters governing the stochastic process for the international price of copper, ρ_{Cu} and σ_{Cu} , will be estimated by fitting an AR(1) process to a

²⁵The reason for a coarser classification is that I only need detail in terms of sector subdivisions for the manufacturing industry. The rest of sectors are grouped according to two criteria: i) tradability of the industry product; ii) characteristics of their activities. This means that, for example, Agriculture groups non-mining extractive activities such as Agriculture, Forestry, Hunting, and Fishing, which are all industries producing a tradable product too. On the other hand, Construction, even though it is an industry that sells a non-tradable good, like Services, it is a very different activity from it.

yearly series for the Chilean CPI deflated price of copper. This series is constructed as the product of the international price of copper, as used in Section 2, and a yearly average of the dollar-Chilean peso exchange rate, which is then divided by the Chilean CPI.

A summary of some of the parameter values and targets can be found in Table 3. Output elasticities, consumption weights, and GDP shares can be found in Tables 1 and 2 of Appendix D.

Table 3: Calibration

Parameter	Description	Value	Target/Source
Panel A. Externally assigned			
σ	Relative risk aversion coefficient	2	Literature
ϕ	Elast. of domestic int. rate function	0.0001	Literature
τ	Capital adj. costs parameter	6	Literature
χ	Effort distaste parameter	1	Normalization
$\{J^T, J^{NT}\}$	Number of T/NT sectors	$\{29, 14\}$	I-O tables
Panel B. Internally calibrated parameters			
ψ_u	Convexity deprec. rate function	0.42	SS cap. util. rate = 1
β	Inter-temporal discount factor	0.96	SS $r^* = 4\%$
$\bar{\delta}$	Dep. rate level parameter	0.14	SS dep rate = 10%
\bar{B}	SS bond holdings level	0.39	TB/GDP = -1.6%
ψ_n	Inverse of hours wage elasticity	0.12	α_2 in empl. reg.
ψ_e	Inverse of effort wage elasticity	30	α_2 in RTFP reg.
Panel C. Estimated parameters			
ρ_{Cu}	Copper price persistence	0.85	Estimation
σ_{Cu}	S.D. copper price shocks	0.18	Estimation

There are two results worth discussing from the calibration procedure. First, the parameter ψ_n , which rules the wage per hour elasticity of hours worked, has a much lower value than that usually observed in the open-economy macro literature (around 0.6). A lower value of ψ_n implies a more elastic labor supply. The reasons for this surprising result are that in this set up I am considering many more sectors than those typically included in small open economy frameworks, and that labor, although variable, it is sector-specific. Hence, the elasticity I am finding is capturing both the adjustment margins of aggregate supply and reallocation across sectors of labor. With sectors defined at such a fine level of aggregation, the elas-

ticity needed to match the data needs to be very high.

Second, the parameter that rules the wage elasticity of effort, ψ_e , is much larger than the one ruling the ‘convexity of the depreciation rate function, ψ_u . This result amounts to say that in relative terms, capital utilization is much more important when adjusting firm scale at the very short run than labor utilization. The most likely reason for this result is that effort and hours worked are complements in the provision of labor services, so a very high cost of raising effort has to be imposed if one wants to match the differential employment and RTFP response on the tradable/non-tradable margin. Otherwise, the model implied differential responses for both variables are too large relative to the actual ones.

4.2 Model Fit

The success of the model in replicating the moments chosen to assign values to the key parameters, ψ_e and ψ_n , is exposed in Table 4. In this table I show the values for the α_2 estimate, as in equation (1), that are obtained from the empirical data and from simulated data within the model. We can observe that the model implied estimates, even though slightly below those obtained in the actual Chilean manufacturing database, are comfortably within one standard deviation of the actual ones.

It is important to note that the model I have used in the quantitative section abstracts from within-sector heterogeneity. However, as the disturbance is at the sectoral level and as I did not find any evidence of action along the entry and exit margin, the abstraction is warranted ²⁶.

Table 4: Targeted Moments

	Employment		RTFP	
	Model	Data	Model	Data
$\Delta \ln(PCu_t) \cdot \mathbb{1}\{NT\}$	0.15	0.17	0.27	0.39
		(0.07)		(0.13)

The performance of the model is also evaluated in moments that were not targeted during the calibration procedure. Given that the purpose of the quantitative

²⁶As it is also pointed in Section 2, the results with the balanced or the unbalanced panel are qualitatively and quantitatively similar.

section is to evaluate the predictions of the model for aggregate variables during the 1996-2009 period, I will use moments associated to the cross-sectoral response to copper price shocks within the broad manufacturing sector during this time frame. In particular, I will compare the model implied estimates for the rest of the coefficients contained in equation (1) to those actually obtained when running the regressions on the Chilean manufacturing data.

We can appreciate in Table 5 the model implied responses with the actual ones. For the sake of completeness, the results highlighted in Table 4 are also included here. Model implied results are roughly aligned with what is found in the empirical data. In particular, the model tends to underpredict the responses on the tradable/non-tradable margin and overpredict those on the reliance on copper to produce margin. Importantly, the model correctly predicts weak estimates for all interactions in which a Leontief inverse term in the upstream direction with respect to the copper sector is included. Overall, given the simplicity of the quantitative model and the fact that only a copper price shock is considered as a source of stochastic perturbations, the fit of it is acceptable.

Table 5: Untargeted Moments

	Output		Employment		RTFP	
	Model	Data	Model	Data	Model	Data
$\Delta \ln(PCu_t) \cdot \tilde{a}_{Cu,i}$	-0.22	-0.04 (0.01)	0.00	0.01 (0.01)	-0.22	-0.02 (0.01)
$\Delta \ln(PCu_t) \cdot \mathbb{1}\{NT\}$	0.25	0.66 (0.12)	0.15	0.17 (0.07)	0.27	0.39 (0.13)
$\Delta \ln(PCu_t) \cdot \tilde{a}_{i,Cu}$	0.01	-0.01 (0.03)	0.00	0.03 (0.01)	0.01	-0.05 (0.04)
$\Delta \ln(PCu_t) \cdot \tilde{a}_{i,Cu} \cdot \mathbb{1}\{NT\}$	0.11	0.01 (0.04)	0.01	-0.00 (0.01)	0.11	-0.00 (0.06)
$\Delta \ln(PCu_t) \cdot \tilde{a}_{Cu,i} \cdot \mathbb{1}\{NT\}$	0.69	2.67 (0.46)	0.76	0.70 (0.27)	0.76	1.59 (0.51)

4.3 Results

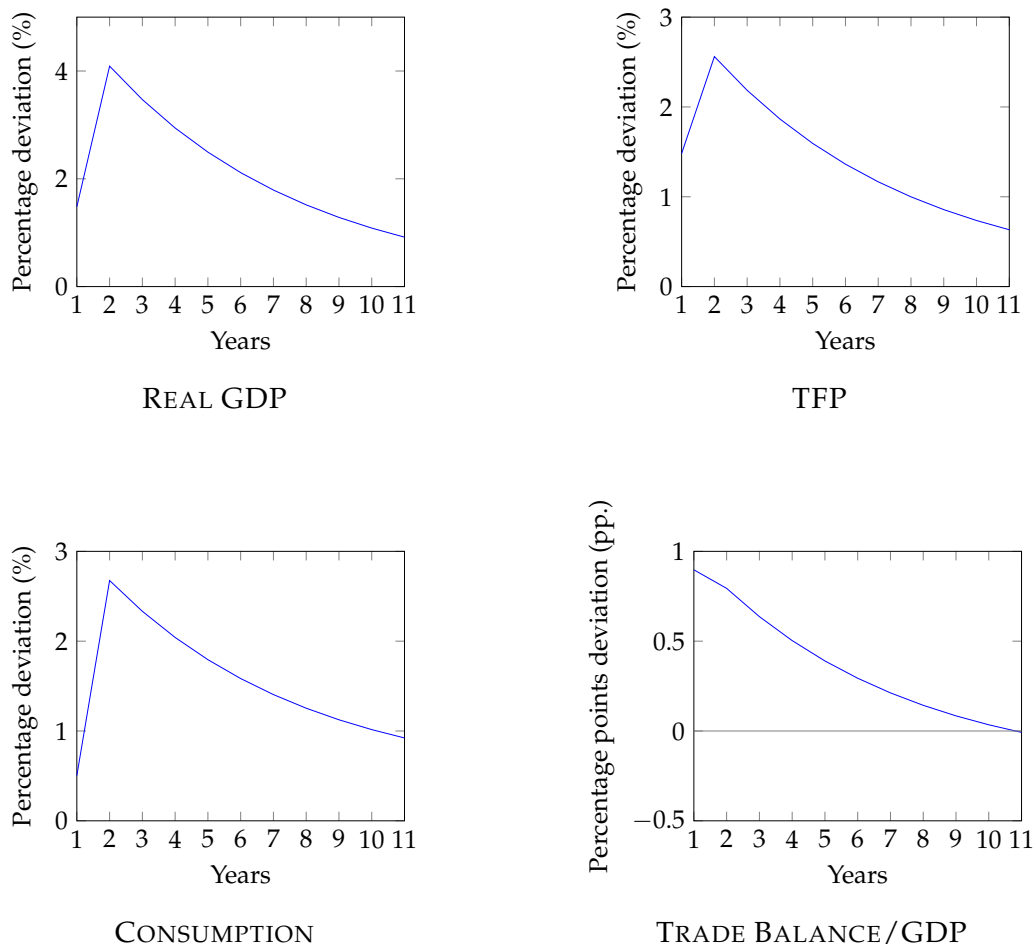
4.3.1 Impulse Response Functions to Copper Price Shocks

Figure 2 displays the impulse response functions to a one-standard deviation (S.D.) copper price shock, which is equivalent to a 18% deviation of the price of copper from its steady-state value, using the calibration described above. The figure shows that the responses are in line with what the theory predicted in Section 3. We can observe that TFP and real GDP both co-move in response to the copper price shock, and display an impact elasticity to the shock of approximately 8.2%. This increase in TFP and real GDP, as expected, is accompanied by an increase in aggregate consumption. As the shock is transitory and of moderate persistence, the response of aggregate consumption is lower than that of real GDP (its impact elasticity being around 2.8%), which rationalizes the increase in the trade balance to GDP ratio that occurs when the shock arrives. However, as consumption is smoothed over time, its level remains above its steady state for several periods after the shock hit and unfolded. In consequence, even though on impact the trade balance to GDP ratio behaves in a pro-cyclical way, negative values are observed shortly after the initial positive response to the copper price shock.

Positive copper price shocks have three effects on the economy. First, they raise revenues in the copper sector. These higher revenues will induce the copper sector to increase production but, as managers do not have the ability to hire more inputs in the very short run, they increase the utilization of the two factors of production, labor and capital, displaying a higher measured sectoral TFP. Second, firms that use copper in their production processes will face higher production costs. Higher costs induce firms to cut back on production and hire less inputs. As they cannot fire inputs in the very short run, they use them less intensively, featuring a lower measured TFP. And third, if the positive effect on the copper sector is larger than the negative effect on other sectors that are downstream the copper industry, households enjoy higher wealth and increase consumption of all final goods. Sectors producing final goods that are non-tradable thus face a higher demand and higher revenues, which makes them want a larger scale, so they use their inputs more intensively and display a larger TFP. As it is clear from the plots, given the size of the Chilean copper sector (around 6% of GDP), the first effect dominates the second, which creates the positive general equilibrium effect on non-tradables and

the ensuing positive response of TFP and real GDP.

Figure 2: Impulse Responses to 1 S.D. Copper Price Shock



4.3.2 Factor Utilization and Productivity Dynamics During the 1997-2009 Period

The period 1997-2009 was unique for the Chilean economy, as it featured important changes in the value of copper in international markets. These fluctuations were driven to a big extent by the entry of China to international markets after its WTO accession in 2001. Jointly with this major event, Chile faced two international financial crises in this period, the 1997-98 Asian crisis and the Great Recession of 2008-09. It is thus of special interest to know to what degree fluctuations in TFP and real GDP can be explained by the variability in factor utilization that was induced by terms of trade shocks, and to what degree other factors might have influenced

in their evolution.

To make the analysis it will be assumed that the Chilean economy was at its non-stochastic steady state in 1996. The model will then be fed with the copper price shocks implied by the actual copper price series for the period 1996-2009. I will compare the model predicted evolution of aggregate TFP and real GDP growth rates with the actual detrended growth rates for both variables. After that, I will evaluate the performance of the model in terms of the differences of predicted second moments for several variables with respect to their data counterparts.

We can appreciate in Figures 3 and 4 that the model is quite successful in qualitatively describing the overall evolution of real GDP and aggregate TFP growth rates during the period of analysis. Some differences have to be noted though. Even though the fit with the data in the case of real GDP growth is quite high, this occurs to a lesser extent with TFP. In particular, the model predicted series for aggregate TFP growth is clearly more volatile than that of the data. This tends to happen in periods in which the copper price perturbation is large, which in this case correspond to the Asian crisis and the build up of the Great Recession. A possible explanation for this higher than actual predicted volatility is that I am only considering copper price shocks as a source of fluctuations for terms of trade shocks. In particular, it was usually the case in this period that increases in the price of copper were accompanied by increases in the price of oil, and vice-versa. Chile is a net importer of oil, so increases in the price of crude could have played a countervailing force on factor utilization and TFP. At the same time, although not included in the model, it might well be the case that the central government has had a more counter-cyclical behavior than what is described by the household sector. It is important to note that since 2001 Chile adopted a fiscal rule in which government spending would be set in order to keep a structural balance in public finances. This means that the government spends according to long-run revenues, which could have allowed it to have a larger fiscal deficit when the price of copper was low and a higher surplus when it was high.

In Table 6 I display the predictions of the model with respect to second moments of several aggregate variables for the period 1997-2009. The implied volatility of aggregate investment is lower than their data counterpart, which results in the volatility of the trade balance to real GDP ratio to also be lower. The model slightly overpredicts the volatility of aggregate consumption. This could be due to

Figure 3: Real GDP Growth, Model vs. Data, 1997-2009

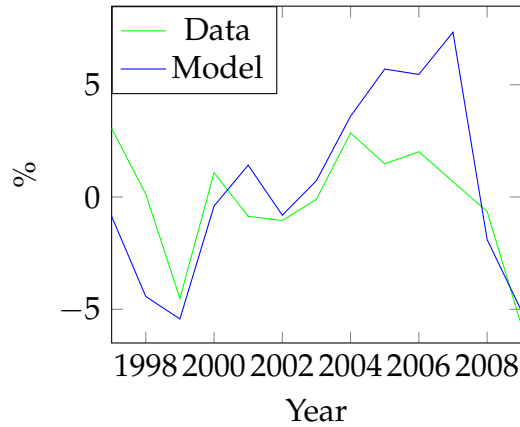
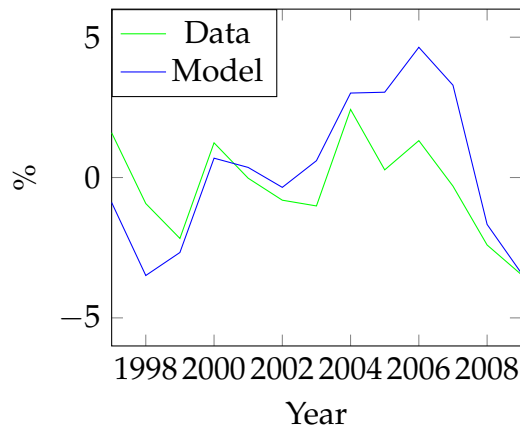


Figure 4: TFP Growth, Model vs. Data, 1997-2009



the combination of a weak response of consumption to transitory shocks, and to large commodity shocks that face no major countervailing force within the model. I have assumed that households are permanent income hypothesis (PIH) consumers, so given the persistence of copper price induced variations in aggregate income, marginal propensities to consume out of temporary windfalls are low. Given the weak response of consumption, demand for non-tradables is not strong either, which results in a smaller than otherwise demand for investment too. The volatility of aggregate hours more volatile than in the data, which reflects that it is easier to increase output by hiring more labor than by accumulating capital in the model. TFP and real GDP are more volatile in the model than in the data, which could be a result of the strong influence of the copper industry over these two variables.

All aggregate variables considered tend to be more persistent in the model than in the data. This could be an outcome of the choice of just having one shock vari-

able to explain Chile’s business cycle in this period. Absent any other perturbations, when faced with a positive copper price shock, the model predicts a more protracted boom than what is observed in the data.

In terms of associations with the movements in the price of copper, we can appreciate that all variables display higher values for their correlation coefficients than those observed in the data. It is worth to note that, in the case of the trade balance to GDP ratio, the model predicts a positive association of this variable with copper prices, while in reality there is a strong negative co-movement, which is something that also appears in similar models, like those of [Drechsel and Tenreyro \(2018\)](#).

Table 6: Empirical and Theoretical Second Moments, Chile, 1997-2009

Variable (x)	Model			Data		
	σ_x	$\text{Corr}(x_t, x_{t-1})$	$\text{Corr}(x_t, PCu_t)$	σ_x	$\text{Corr}(x_t, x_{t-1})$	$\text{Corr}(x_t, PCu_t)$
Real GDP	8.38	0.87	0.92	2.62	0.55	0.67
TFP	5.36	0.87	0.96	1.72	0.20	0.29
C	5.27	0.85	0.86	5.10	0.75	0.87
I	2.25	0.88	0.93	13.18	0.68	0.76
N	7.62	0.83	0.83	1.80	0.60	0.36
TB/GDP	2.10	0.86	0.99	3.63	0.78	-0.77

5 Conclusion

The relation between terms of trade and, in particular commodity prices, and the productivity of open economies is an open question in international macroeconomics. Focusing on the Chilean case, this paper has contributed to fill this gap by providing firm-level evidence suggestive of the existence of variable factor utilization as a short-run response to this type of shocks. In particular, when faced with positive copper price shocks, firms selling non-tradables tend to increase output and TFP relative to comparable firms selling tradables, but display no significant employment differences. Additionally, firms that rely more on copper to produce reduce output and TFP, with no sensible responses of employment either.

Building over these findings I elaborate a general equilibrium multi-sector model aiming at understanding under which context commodity price shocks should co-move positively with aggregate TFP and when otherwise. The basic trade-off that

the model incorporates is the one between the increase in revenues for the commodity industry and the increase in costs for the sectors selling non-commodity tradables. If the effect on commodity sector revenues overcome the negative effect on other tradable sectors, then households will enjoy a wealth increase and will demand more from every final good. The increase in factor utilization rates by firms in the commodity sector and those selling non-tradables will be expressed as a larger observed sectoral TFP, which in turn will lead to a higher aggregate TFP.

I calibrate the model to Chilean data for the period 1996-2009 in order to evaluate its ability to generate realistic patterns for aggregate TFP and other aggregate variables. The framework is successful in yielding a positive co-movement between copper price shocks and aggregate TFP, and a pattern for real GDP that closely resembles the one observed in the data for the period. However, the volatility in TFP and real GDP induced by copper price shocks is higher than that observed in the data for the period, suggesting that other shocks creating forces in the opposite direction, such as oil price shocks, are occurring simultaneously. Relatedly, the model predicts that, absent any other shocks, an increase in copper prices should create a more protracted boom in the economy than what is observed in the data.

In summary, this paper has provided a compelling explanation for the price shocks-aggregate productivity puzzle postulated by [Kehoe and Ruhl \(2008\)](#). This is confirmed by the quantitative analysis. If its results are taken at face value, there is little room for other productivity enhancing mechanisms, such as R&D, to play an important role on productivity dynamics at business cycle frequencies. My findings suggest that other types of shocks or productivity detrimental policies might be happening jointly, and in the opposite direction, with variations in commodity prices. The extension of the model to incorporate these elements and the improvement of its estimation by making use of the establishment-level results shown in [Section 2](#) are tasks left for future work.

References

- D. Acemoglu, U. Akcigit, and W. Kerr. Networks and the Macroeconomy: An Empirical Exploration. In M. Eichenbaum and J. Parker, editors, *NBER Macroeconomics Annual 2015*, volume 30, pages 276–335. University of Chicago Press, 2015.
- D. Acemoglu, D. Autor, D. Dorn, G.H. Hanson, and B. Price. Import competition and the Great U.S. Employment Sag of the 2000s. *Journal of Labor Economics*, 34(1), 2016.
- H. Allcott and D. Keniston. Dutch-Disease or Agglomeration? the Local Economic Effects of Natural Resource Booms in Modern America. *Review of Economic Studies*, 85:695–731, 2018.
- E. Atalay. How Important Are Sectoral Shocks? *American Economic Journal: Macroeconomics*, 9(4):254–280, 2017.
- D. Baqaee and E. Farhi. The Macroeconomic Impact of Microeconomic Shocks: Beyond Hulten’s Theorem. *Econometrica*, 87(4):1155–1203, 2019.
- S. Basu and J.G. Fernald. Returns to Scale in U.S. Production: Estimates and Implications. *Journal of Political Economy*, 105(2):249–283, 1997.
- S. Basu and J.G. Fernald. Why Is Productivity Procyclical? Why Do We Care? In C.R. Hulten, E.R. Dean, and M.J. Harper, editors, *New Developments in Productivity Analysis*, pages 225–302. University of Chicago Press, 2001.
- S. Basu and M.S. Kimball. Cyclical Productivity with Unobserved Input Variation. Working Paper 5915, NBER, 1997.
- S. Basu, J.G. Fernald, and M.S. Kimball. Are Technology Improvements Contractionary? *American Economic Review*, 96(5):1418–1448, 2006.
- R. Bergoeing, R. Hernando, and A. Repetto. Market Reforms and Efficiency Gains in Chile. *Estudios de Economía*, 37(2):217–242, 2010.
- S. Bigio and J. La’O. Distortions in Production Networks. *The Quarterly Journal of Economics*, 135(4):2187–2253, 2020.

- M. Bils and J. Cho. Cyclical Factor Utilization. *Journal of Monetary Economics*, 33(2): 319–354, 1994.
- C. Burnside, M. Eichenbaum, and S. Rebelo. Labor Hoarding and the Business Cycle. *Journal of Political Economy*, 101:245–273, 1993.
- C. Burnside, M. Eichenbaum, and S. Rebelo. Capital Utilization and Returns to Scale. In B. Bernanke and J. Rotemberg, editors, *NBER Macroeconomics Annual 1995*, pages 67–110. Cambridge, MIT Press, 1995.
- C. Burnside, M. Eichenbaum, and S. Rebelo. Sectoral Solow Residuals. *European Economic Review*, 40(3-5):861–869, 1996.
- L. Caliendo and F. Parro. Estimates of the Trade and Welfare Effects of NAFTA. *Review of Economic Studies*, 82:1–44, 2015.
- V. Carvalho. Aggregate Fluctuations and the Network Structure of Intersectoral Trade. Manuscript, University of Cambridge, 2010.
- V. Corbo, J. de Melo, and J. Tybout. The Effects of Trade Reforms on Scale and Technical Efficiency: New Evidence from Chile. *Journal of International Economics*, 31 (3–4):231–250, 1991.
- D.M. Costello. A cross-country, cross-industry comparison of productivity growth. *Journal of Political Economy*, 101(2):207–222, 1993.
- J. DiGiovanni, A. Levchenko, and I. Mejean. Foreign Shocks as Granular Fluctuations. Manuscript, 2020.
- T. Drechsel and S. Tenreyro. Commodity Booms and Busts in Emerging Economies. *Journal of International Economics*, 112:200–218, 2018.
- J. Fernald. A Quarterly, Utilization-Adjusted Series on Total Factor Productivity. Working Paper 2012-19, Federal Reserve Bank of San Francisco, 2014.
- A. Fernández, A. González, and D. Rodríguez. Sharing a Ride in the Commodities Roller Coaster: Common Factors in Business Cycles of Emerging Economies. *Journal of International Economics*, 111:99–121, 2018.

- A.T. Foerster, P-D G. Sarte, and M.W. Watson. Sectoral versus Aggregate Shocks: A Structural Factor Analysis of Industrial Production. *Journal of Political Economy*, 119(1):1–38, 2011.
- J. Greenwood, Z. Hercowitz, and G. Huffman. Investment, Capacity Utilization, and the Real Business Cycle. *American Economic Review*, 78(3):402–417, 1988.
- M. Horvath. Cyclicalities and Sectoral Linkages: Aggregate Fluctuations from Independent Sectoral Shocks. *Review of Economic Dynamics*, 1:781–808, 1998.
- C-T Hsieh and J.A. Parker. Taxes and Growth in a Financially Underdeveloped Country: Evidence from the Chilean Investment Boom. *Economia*, (Fall):1–53, 2007.
- Z. Huo, A. Levchenko, and N. Pandalai-Nayar. Utilization-Adjusted TFP Across Countries: Measurement and Implications for International Co-movement. Working Paper 26803, NBER, 2020.
- C.I. Jones. Misallocation, Economic Growth, and Input-Output Economics. In D. Acemoglu, M. Arellano, and E. Dekel, editors, *Advances in Economics and Econometrics*, volume Tenth World Congress, Volume II, pages 419–454. Cambridge University Press, 2013.
- T.J. Kehoe and K.J. Ruhl. Are Shocks to the Terms of Trade Shocks to Productivity. *Review of Economic Dynamics*, 11:804–819, 2008.
- T.J. Kehoe and K.J. Ruhl. Sudden Stops, Sectoral Reallocations, and the Real Exchange Rate. *Journal of Development Economics*, 89:235–249, 2009.
- M.A. Kose. Explaining Business Cycles in Small Open Economies: How Much Do World Prices Matter? *Journal of International Economics*, 56(2):299–327, 2002.
- P. Krugman. The Narrow Moving Band, the Dutch Disease, and the Competitive Consequences of Mrs. Thatcher. *Journal of Development Economics*, 27:41–55, 1987.
- J. Levinsohn and A. Petrin. Estimating Production Functions Using Inputs to Control for Unobservables. *Review of Economic Studies*, 70(2):317–341, 2003.
- J. Levinsohn and A. Petrin. Measuring Aggregate Productivity Growth Using Plant-Level Data. *The RAND Journal of Economics*, 43(4):705–725, 2012.

- E. Liu. Industrial Policies in Production Networks. *The Quarterly Journal of Economics*, 134(4):1883–1948, 2019.
- L. Liu. Entry-Exit, Learning, and Productivity Change Evidence from Chile. *Journal of Development Economics*, 42(2):217–242, 1993.
- L. Liu and J.R. Tybout. Productivity growth in chile and colombia: Panel-based evidence on the role of entry, exit, and learning. In M.J. Roberts and J.R. Tybout, editors, *Industrial Evolution in Developing Countries: Micro Patterns of Turnover, Productivity, and Market Structure*, pages 73–103. Oxford University Press, 1996.
- J.B. Long and C.I. Plosser. Real Business Cycles. *Journal of Political Economy*, 91(1): 39–69, 1983.
- E.G. Mendoza. The Terms of Trade, the Real Exchange Rate, and Economic Fluctuations. *International Economic Review*, 36(1):101–137, 1995.
- F. Meza and E. Quintin. Factor Utilization and the Real Impact of Financial Crises. *The B.E. Journal of Macroeconomics*, 7(1), 2007.
- G.S. Olley and A. Pakes. The Dynamics of Productivity in the Telecommunications Equipment Industry. *Econometrica*, 64(6):263–297, 1996.
- N. Pavcnik. Trade Liberalization, Exit, and Productivity Improvements: Evidence from Chilean Plants. *Review of Economic Studies*, 69:245–276, 2002.
- S. Schmitt-Grohé and M. Uribe. Closing small open economy models. *Journal of International Economics*, 61(1):163–185, 2003.
- S. van Wijnbergen. The ‘Dutch Disease’: A Disease After All? *The Economic Journal*, 94(373):41–55, 1984a.
- S. van Wijnbergen. Inflation, Employment, and the Dutch Disease in Oil-Exporting: A Short-Run Disequilibrium Analysis. *The Quarterly Journal of Economics*, 99(2):233–250, 1984b.

A Construction of Variables

A.1 TFP Estimation

Plant TFP will be measured using the Olley-Pakes (1996) method with investment as proxy variable.

The logged production function considered is:

$$y_{fit} = \beta_0 + \beta_p^i p_{fit} + \beta_{np}^i np_{fit} + \beta_m^i m_{fit} + \beta_k^i k_{fit} + \omega_{fit} + \mu_{fit}$$

where y_{fit} is real gross output, p_{fit} is number of blue-collar workers, np_{fit} is number of white-collar workers, m_{fit} are real materials purchases, and k_{fit} is the plant's stock of capital.

Hence, the log of TFP will correspond to the projected residual after applying the method industry-by-industry.

A.2 Construction of Normalized Leontief Inverse Coefficients

I take the Leontief inverse coefficients for the manufacturing sector that appear on the row and column associated with the cross with the copper industry, as reported by the Central Bank of Chile. There are 37 manufacturing sub-sectors included in the Chilean input-output matrix. In this matrix, rows correspond to the downstream direction while columns to the upstream direction. I compute the average and the standard deviation of both the row and the column coefficients. I finish by expressing each industry coefficient as a standardized deviation from the corresponding direction average.

More specifically, let \mathcal{J} be the set of all manufacturing industries that appear in the input-output matrix, whose cardinality is denoted by J . A normalized upstream Leontief inverse coefficient for manufacturing sector i , $\tilde{a}_{i \rightarrow Cu}$, is given by:

$$\tilde{a}_{i \rightarrow Cu} = \frac{a_{i \rightarrow Cu} - \bar{a}_{j \rightarrow Cu, j \in \mathcal{J}}}{\sigma_{j \rightarrow Cu, j \in \mathcal{J}}}$$

where $a_{i \rightarrow Cu}$ is the raw upstream Leontief inverse term for manufacturing sector i , $\bar{a}_{j \rightarrow Cu, j \in \mathcal{J}}$ is the average of all upstream Leontief inverse coefficients that correspond to manufacturing industries, and $\sigma_{j \rightarrow Cu, j \in \mathcal{J}}$ is the standard deviation of

those same coefficients, i.e.:

$$\bar{a}_{j \rightarrow Cu, j \in \mathcal{J}} = \frac{1}{J} \sum_{k=1}^J a_{k \rightarrow Cu}$$

$$\sigma_{j \rightarrow Cu, j \in \mathcal{J}} = \sqrt{\frac{1}{J} \sum_{k=1}^J (a_{k \rightarrow Cu} - \bar{a}_{j \rightarrow Cu, j \in \mathcal{J}})^2}$$

Similarly, a normalized downstream Leontief inverse coefficient for manufacturing sector i , $\tilde{a}_{Cu \rightarrow i}$, is given by:

$$\tilde{a}_{Cu \rightarrow i} = \frac{a_{Cu \rightarrow i} - \bar{a}_{Cu \rightarrow j, j \in \mathcal{J}}}{\sigma_{Cu \rightarrow j, j \in \mathcal{J}}}$$

where $a_{Cu \rightarrow i}$ is the raw downstream Leontief inverse term for manufacturing sector i , $\bar{a}_{Cu \rightarrow j, j \in \mathcal{J}}$ is the average of all downstream Leontief inverse coefficients that correspond to manufacturing industries, and $\sigma_{Cu \rightarrow j, j \in \mathcal{J}}$ is the standard deviation of those same coefficients, i.e.:

$$\bar{a}_{Cu \rightarrow j, j \in \mathcal{J}} = \frac{1}{J} \sum_{k=1}^J a_{Cu \rightarrow k}$$

$$\sigma_{Cu \rightarrow j, j \in \mathcal{J}} = \sqrt{\frac{1}{J} \sum_{k=1}^J (a_{Cu \rightarrow k} - \bar{a}_{Cu \rightarrow j, j \in \mathcal{J}})^2}$$

B Additional Results

B.1 Results for Omitted Controls in Baseline Specification

Table 7: Effects of Copper Price Shocks on Establishment-Level Gross Output, Inputs, and RTFP

	Output	Employment	Capital/ worker	Materials/ worker	RTFP
$\Delta \ln(PCu_t) \cdot \tilde{a}_{i,Cu}$	-0.01 (0.03)	0.03** (0.01)	-0.03 (0.02)	0.02 (0.02)	-0.05 (0.04)
$\Delta \ln(PCu_t) \cdot \tilde{a}_{i,Cu} \cdot \mathbb{1}\{NT\}$	0.01 (0.04)	-0.00 (0.01)	0.04 (0.04)	0.01 (0.03)	-0.00 (0.06)
$\Delta \ln(PCu_t) \cdot \tilde{a}_{Cu,i} \cdot \mathbb{1}\{NT\}$	2.67*** (0.46)	0.70** (0.27)	-2.22*** (0.83)	1.96* (1.04)	1.59*** (0.51)
$\log(RTFP)_{t-1}$	-0.04*** (0.01)	0.03*** (0.00)	0.20*** (0.01)	0.12*** (0.02)	-0.19*** (0.01)
$\log(\text{Employment})_{t-1}$	0.01*** (0.00)	-0.04*** (0.00)	0.06*** (0.01)	0.06*** (0.00)	0.00 (0.00)
$\log(\text{Age})_{t-1}$	-0.00*** (0.00)	-0.00 (0.00)	-0.02 (0.00)	-0.00 (0.00)	0.00 (0.00)
Observations	31,504	31,504	31,504	31,504	31,504
Industry and Time FE	Y	Y	Y	Y	Y
Firm-Level Controls	Y	Y	Y	Y	Y

Note: This table presents estimates of equation (1) for the 1995-2007 period. The dependent variable is the yearly change in the natural log of the listed outcome. Robust standard errors in parentheses, clustered at the 4-digit industry-level. * $p < 0.1$, ** $p < 0.05$, *** $p < 0.01$

Table 8: Effect of Copper Price Shocks on Establishment-Level Measures of Input Usage Intensity

	Avg. Real Wage	Workdays	Electricity Consumption	Fuel Consumption
$\Delta \ln(PCu_t) \cdot \tilde{a}_{i,Cu}$	-0.06* (0.03)	0.00 (0.00)	0.02 (0.03)	0.03 (0.03)
$\Delta \ln(PCu_t) \cdot \tilde{a}_{i,Cu} \cdot \mathbb{1}\{NT\}$	0.00 (0.06)	0.01 (0.00)	0.07 (0.05)	-0.01 (0.05)
$\Delta \ln(PCu_t) \cdot \tilde{a}_{Cu,i} \cdot \mathbb{1}\{NT\}$	1.35* (0.73)	0.44*** (0.15)	0.88 (0.98)	1.94 (1.39)
$\log(RTFP)_{t-1}$	-0.02*** (0.01)	-0.00 (0.00)	0.02** (0.01)	0.02 (0.01)
$\log(\text{Employment})_{t-1}$	0.04*** (0.00)	0.00 (0.00)	0.02*** (0.00)	0.03*** (0.01)
$\log(\text{Age})_{t-1}$	-0.00*** (0.00)	-0.00* (0.00)	-0.00** (0.00)	-0.00 (0.00)
Observations	31,504	31,482	31,269	27,443
Industry and Time FE	Y	Y	Y	Y
Firm-Level Controls	Y	Y	Y	Y

Note: This table presents estimates of equation (1) for the 1995-2007 period. The dependent variable is the yearly change in the natural log of the listed outcome. Robust standard errors in parentheses, clustered at the 4-digit industry-level. * $p < 0.1$, ** $p < 0.05$, *** $p < 0.01$

Table 9: Effects of Copper Price Shocks on Establishment-Level Gross Output, Inputs, and RTFP (4-Year Differences)

	Output	Employment	Capital/ worker	Materials/ worker	RTFP
$\Delta \ln(PCu_t) \cdot \tilde{a}_{i,Cu}$	0.03 (0.03)	0.05*** (0.02)	-0.05 (0.04)	0.06*** (0.02)	-0.05 (0.03)
$\Delta \ln(PCu_t) \cdot \tilde{a}_{i,Cu} \cdot \mathbb{1}\{NT\}$	0.06 (0.06)	-0.06* (0.03)	0.11 (0.07)	0.14*** (0.04)	0.03 (0.07)
$\Delta \ln(PCu_t) \cdot \tilde{a}_{Cu,i} \cdot \mathbb{1}\{NT\}$	3.05*** (0.77)	1.25* (0.64)	-2.22 (1.59)	1.07 (1.15)	1.94** (0.84)
$\log(RTFP)_{t-1}$	-0.09*** (0.01)	0.05*** (0.01)	0.62*** (0.04)	0.12*** (0.03)	-0.39*** (0.02)
$\log(\text{Employment})_{t-1}$	0.03*** (0.01)	-0.07*** (0.01)	0.06** (0.02)	0.11*** (0.01)	0.02* (0.01)
$\log(\text{Age})_{t-1}$	-0.02*** (0.00)	-0.01 (0.00)	-0.05*** (0.01)	-0.00 (0.01)	0.00 (0.01)
Observations	17,148	17,148	16,624	17,148	16,624
Industry and Time FE	Y	Y	Y	Y	Y
Firm-Level Controls	Y	Y	Y	Y	Y

Note: This table presents estimates of equation (1) for the 1995-2007 period. The dependent variable is the 4-year change in the natural log of the listed outcome. Robust standard errors in parentheses, clustered at the 4-digit industry-level. * $p < 0.1$, ** $p < 0.05$, *** $p < 0.01$

Table 10: Effect of Copper Price Shocks on Establishment-Level Measures of Input Usage Intensity (4-Year Differences)

	Avg. Real Wage	Workdays	Electricity Consumption	Fuel Consumption
$\Delta \ln(PCu_t) \cdot \tilde{a}_{i,Cu}$	0.44* (0.26)	-0.01 (0.07)	0.07 (0.25)	-0.35 (0.79)
$\Delta \ln(PCu_t) \cdot \tilde{a}_{i,Cu} \cdot \mathbb{1}\{NT\}$	0.14** (0.06)	0.00 (0.00)	0.20*** (0.04)	-0.00 (0.11)
$\Delta \ln(PCu_t) \cdot \tilde{a}_{Cu,i} \cdot \mathbb{1}\{NT\}$	1.82* (1.02)	-0.05 (0.26)	0.32 (0.96)	-2.32 (3.30)
$\log(RTFP)_{t-1}$	-0.03** (0.01)	-0.00 (0.00)	0.02 (0.02)	0.07 (0.06)
$\log(\text{Employment})_{t-1}$	0.05*** (0.01)	0.00 (0.00)	0.07*** (0.01)	0.18*** (0.02)
$\log(\text{Age})_{t-1}$	-0.00 (0.00)	-0.00 (0.00)	-0.01 (0.01)	-0.01 (0.02)
Observations	17,148	17,135	17,025	14,403
Industry and Time FE	Y	Y	Y	Y
Firm-Level Controls	Y	Y	Y	Y

Note: This table presents estimates of equation (1) for the 1995-2007 period. The dependent variable is the 4-year change in the natural log of the listed outcome. Robust standard errors in parentheses, clustered at the 4-digit industry-level. * $p < 0.1$, ** $p < 0.05$, *** $p < 0.01$

B.2 Results for Robustness

B.2.1 Results with RTFP calculated with Olley-Pakes (1996) methodology

Table 11: Effects of Copper Price Shocks on Establishment-Level Gross Output, Inputs, and RTFP

	Output	Employment	Capital/ worker	Materials/ worker	RTFP
Panel A. 1-Year Differences					
$\Delta \ln(PCu_t) \cdot \tilde{a}_{Cu,i}$	-0.03*** (0.01)	0.00 (0.01)	-0.02 (0.02)	-0.04*** (0.01)	-0.02** (0.01)
$\Delta \ln(PCu_t) \cdot \mathbb{1}\{NT\}$	0.59*** (0.13)	0.09 (0.14)	-0.23 (0.41)	0.44* (0.24)	0.39*** (0.11)
Observations	27,865	27,865	31,504	31,504	26,787
Panel B. 4-Year Differences					
$\Delta \ln(PCu_t) \cdot \tilde{a}_{Cu,i}$	-0.05*** (0.02)	-0.00 (0.01)	0.02 (0.03)	-0.06*** (0.01)	-0.03*** (0.01)
$\Delta \ln(PCu_t) \cdot \mathbb{1}\{NT\}$	0.76*** (0.19)	0.31** (0.13)	-0.33 (0.45)	0.32 (0.30)	0.50*** (0.18)
Observations	15,606	15,606	15,131	15,606	13,771
Industry and Time FE	Y	Y	Y	Y	Y
Firm-Level Controls	Y	Y	Y	Y	Y

Note: This table presents estimates of equation (1) for the 1995-2007 period. The dependent variable is the change in the natural log of the listed outcome. Firm-level controls are lagged age, employment, and RTFP, interactions of all the regressors included in the table, and analogous interactions for upstream coefficients. Robust standard errors in parentheses, clustered at the 4-digit industry-level. * $p < 0.1$, ** $p < 0.05$, *** $p < 0.01$

Table 12: Effect of Copper Price Shocks on Establishment-Level Measures of Input Usage Intensity

	Avg. Real Wage	Workdays	Electricity Consumption	Fuel Consumption
Panel A. 1-Year Differences				
$\Delta \ln(PCu_t) \cdot \tilde{a}_{Cu,i}$	-0.09*** (0.01)	0.00* (0.00)	-0.05*** (0.01)	-0.06*** (0.01)
$\Delta \ln(PCu_t) \cdot \mathbb{1}\{NT\}$	0.31 (0.22)	0.07** (0.03)	0.30 (0.23)	0.66* (0.33)
Observations	27,865	27,849	27,652	24,312
Panel B. 4-Year Differences				
$\Delta \ln(PCu_t) \cdot \tilde{a}_{Cu,i}$	-0.08*** (0.01)	-0.00 (0.00)	-0.12*** (0.02)	-0.11*** (0.03)
$\Delta \ln(PCu_t) \cdot \mathbb{1}\{NT\}$	0.36 (0.27)	-0.00 (0.07)	0.13 (0.25)	-0.08 (0.73)
Observations	15,606	15,597	15,499	13,185
Industry and Time FE	Y	Y	Y	Y
Firm-Level Controls	Y	Y	Y	Y

Note: This table presents estimates of equation (1) for the 1995-2007 period. The dependent variable is the change in the natural log of the listed outcome. Firm-level controls are lagged age, employment, and RTFP, interactions of all the regressors included in the table, and analogous interactions for upstream coefficients. Robust standard errors in parentheses, clustered at the 4-digit industry-level. * $p < 0.1$, ** $p < 0.05$, *** $p < 0.01$

B.2.2 Results with copper price series in Chilean pesos and deflated by Chilean CPI

Table 13: Effects of Copper Price Shocks on Establishment-Level Gross Output, Inputs, and RTFP

	Output	Employment	Capital/ worker	Materials/ worker	RTFP
Panel A. 1-Year Differences					
$\Delta \ln(PCu_t) \cdot \tilde{a}_{Cu,i}$	-0.04*** (0.01)	0.01** (0.01)	-0.03 (0.02)	-0.05*** (0.01)	-0.02** (0.01)
$\Delta \ln(PCu_t) \cdot \mathbb{1}\{NT\}$	0.70*** (0.15)	0.33*** (0.11)	-0.64*** (0.41)	0.49 (0.30)	0.31* (0.19)
Observations	31,504	31,504	31,504	31,504	31,504
Panel B. 4-Year Differences					
$\Delta \ln(PCu_t) \cdot \tilde{a}_{Cu,i}$	-0.06** (0.03)	0.01 (0.01)	0.00 (0.05)	-0.08*** (0.02)	-0.03** (0.01)
$\Delta \ln(PCu_t) \cdot \mathbb{1}\{NT\}$	0.81*** (0.24)	0.48*** (0.16)	-0.63 (0.73)	0.32 (0.42)	0.41* (0.24)
Observations	17,148	17,148	16,624	17,148	16,624
Industry and Time FE	Y	Y	Y	Y	Y
Firm-Level Controls	Y	Y	Y	Y	Y

Note: This table presents estimates of equation (1) for the 1995-2007 period. The dependent variable is the change in the natural log of the listed outcome. Firm-level controls are lagged age, employment, and RTFP, interactions of all the regressors included in the table, and analogous interactions for upstream coefficients. Robust standard errors in parentheses, clustered at the 4-digit industry-level. * $p < 0.1$, ** $p < 0.05$, *** $p < 0.01$

Table 14: Effect of Copper Price Shocks on Establishment-Level Measures of Input Usage Intensity

	Avg. Real Wage	Workdays	Electricity Consumption	Fuel Consumption
Panel A. 1-Year Differences				
$\Delta \ln(PCu_t) \cdot \tilde{a}_{Cu,i}$	-0.10*** (0.01)	0.00* (0.00)	-0.05*** (0.02)	-0.09*** (0.01)
$\Delta \ln(PCu_t) \cdot \mathbb{1}\{NT\}$	0.29* (0.17)	0.13*** (0.04)	0.51* (0.26)	0.61* (0.32)
Observations	31,504	31,482	27,652	27,443
Panel B. 4-Year Differences				
$\Delta \ln(PCu_t) \cdot \tilde{a}_{Cu,i}$	-0.10*** (0.02)	0.00 (0.00)	-0.12*** (0.03)	-0.16*** (0.05)
$\Delta \ln(PCu_t) \cdot \mathbb{1}\{NT\}$	0.49 (0.33)	-0.00 (0.09)	0.29 (0.31)	-0.69 (0.92)
Observations	17,148	17,135	17,025	14,403
Industry and Time FE	Y	Y	Y	Y
Firm-Level Controls	Y	Y	Y	Y

Note: This table presents estimates of equation (1) for the 1995-2007 period. The dependent variable is the change in the natural log of the listed outcome. Firm-level controls are lagged age, employment, and RTFP, interactions of all the regressors included in the table, and analogous interactions for upstream coefficients. Robust standard errors in parentheses, clustered at the 4-digit industry-level. * $p < 0.1$, ** $p < 0.05$, *** $p < 0.01$

B.2.3 Results with balanced panel, 1319 firms

Table 15: Effects of Copper Price Shocks on Establishment-Level Gross Output, Inputs, and RTFP

	Output	Employment	Capital/ worker	Materials/ worker	RTFP
Panel A. 1-Year Differences					
$\Delta \ln(PCu_t) \cdot \tilde{a}_{Cu,i}$	-0.02 (0.02)	0.02*** (0.01)	0.02 (0.03)	-0.02 (0.01)	-0.04** (0.02)
$\Delta \ln(PCu_t) \cdot \mathbb{1}\{NT\}$	0.50*** (0.14)	0.05 (0.06)	-0.35 (0.40)	0.21 (0.40)	0.44** (0.20)
Observations	13,190	13,190	13,190	13,190	13,190
Panel B. 4-Year Differences					
$\Delta \ln(PCu_t) \cdot \tilde{a}_{Cu,i}$	-0.04 (0.02)	0.01 (0.01)	0.00 (0.03)	-0.07*** (0.01)	-0.01 (0.01)
$\Delta \ln(PCu_t) \cdot \mathbb{1}\{NT\}$	0.92*** (0.20)	0.37** (0.15)	-0.21 (0.25)	0.31 (0.19)	0.45* (0.22)
Observations	9,233	9,233	9,233	9,233	9,233
Industry and Time FE	Y	Y	Y	Y	Y
Firm-Level Controls	Y	Y	Y	Y	Y

Note: This table presents estimates of equation (1) for the 1995-2007 period. The dependent variable is the change in the natural log of the listed outcome. Firm-level controls are lagged age, employment, and RTFP, interactions of all the regressors included in the table, and analogous interactions for upstream coefficients. Robust standard errors in parentheses, clustered at the 4-digit industry-level. * $p < 0.1$, ** $p < 0.05$, *** $p < 0.01$

Table 16: Effect of Copper Price Shocks on Establishment-Level Measures of Input Usage Intensity

	Avg. Real Wage	Workdays	Electricity Consumption	Fuel Consumption
Panel A. 1-Year Differences				
$\Delta \ln(PCu_t) \cdot \tilde{a}_{Cu,i}$	-0.09*** (0.02)	-0.00 (0.00)	-0.05*** (0.02)	-0.07*** (0.02)
$\Delta \ln(PCu_t) \cdot \mathbb{1}\{NT\}$	0.67*** (0.15)	0.04 (0.04)	-0.15 (0.29)	0.23 (0.42)
Observations	13,190	13,187	13,138	11,821
Panel B. 4-Year Differences				
$\Delta \ln(PCu_t) \cdot \tilde{a}_{Cu,i}$	-0.09*** (0.02)	0.00 (0.00)	-0.11*** (0.02)	-0.12*** (0.03)
$\Delta \ln(PCu_t) \cdot \mathbb{1}\{NT\}$	0.47 (0.32)	0.03 (0.11)	0.21 (0.23)	-0.09 (0.79)
Observations	9,233	9,229	9,195	7,975
Industry and Time FE	Y	Y	Y	Y
Firm-Level Controls	Y	Y	Y	Y

Note: This table presents estimates of equation (1) for the 1995-2007 period. The dependent variable is the change in the natural log of the listed outcome. Firm-level controls are lagged age, employment, and RTFP, interactions of all the regressors included in the table, and analogous interactions for upstream coefficients. Robust standard errors in parentheses, clustered at the 4-digit industry-level. * $p < 0.1$, ** $p < 0.05$, *** $p < 0.01$

B.2.4 Results with balanced panel, levels fixed effects, 1319 firms

Table 17: Effects of Copper Price Shocks on Establishment-Level Gross Output, Inputs, and RTFP

	Output	Employment	Capital/ worker	Materials/ worker	RTFP
$\ln(PCu_t) \cdot \tilde{a}_{Cu,i}$	-0.07** (0.03)	0.01 (0.01)	-0.03 (0.02)	-0.07*** (0.02)	-0.03** (0.01)
$\ln(PCu_t) \cdot \mathbb{1}\{NT\}$	0.77*** (0.25)	0.18** (0.08)	0.16 (0.40)	-0.17 (0.40)	0.62*** (0.20)
Observations	13,190	13,190	13,190	13,190	13,190
Firm, Industry, and Time FE	Y	Y	Y	Y	Y
Firm-Level Controls	Y	Y	Y	Y	Y

Note: This table presents estimates of equation (1) for the 1995-2007 period. The dependent variable is the change in the natural log of the listed outcome. Firm-level controls are lagged age, employment, and RTFP, interactions of all the regressors included in the table, and analogous interactions for upstream coefficients. Robust standard errors in parentheses, clustered at the 4-digit industry-level. * $p < 0.1$, ** $p < 0.05$, *** $p < 0.01$

Table 18: Effect of Copper Price Shocks on Establishment-Level Measures of Input Usage Intensity

	Avg. Real Wage	Workdays	Electricity Consumption	Fuel Consumption
$\ln(PCu_t) \cdot \tilde{a}_{Cu,i}$	-0.12*** (0.03)	0.00 (0.00)	-0.14*** (0.02)	-0.17*** (0.02)
$\ln(PCu_t) \cdot 1\{NT\}$	0.10 (0.24)	-0.00 (0.07)	-0.51* (0.27)	-0.33 (0.67)
Observations	13,190	13,188	13,162	12,263
Industry and Time FE	Y	Y	Y	Y
Firm-Level Controls	Y	Y	Y	Y

Note: This table presents estimates of equation (1) for the 1995-2007 period. The dependent variable is the change in the natural log of the listed outcome. Firm-level controls are lagged age, employment, and RTFP, interactions of all the regressors included in the table, and analogous interactions for upstream coefficients. Robust standard errors in parentheses, clustered at the 4-digit industry-level. * $p < 0.1$, ** $p < 0.05$, *** $p < 0.01$

C Proofs Lemmas, Propositions, and Corollaries

C.1 Proof Proposition 1

We have that:

$$d \log Y_T = \gamma_T d \log e_T + (1 - \gamma_T) d \log M_T$$

From the input utilization function:

$$d \log e_T = d \log Y_T - d \log w_T$$

From the labor-effort function we get $d \log e_T = (1/\psi)d \log w_T$. Using the labor market clearing condition we obtain:

$$d \log w_T = \frac{\psi}{1 + \psi} d \log Y_T$$

Substituting in the effort function we get:

$$d \log e_T = \frac{1}{1 + \psi} d \log Y_T$$

From the demand for commodities we get:

$$d \log M_T = d \log Y_T - d \log PCu$$

Substituting for e_T and M_T into the log-differentiated production function expression of above and solving for $d \log Y_T$ we get:

$$d \log Y_T = -\frac{(1 - \gamma_T)(1 + \psi)}{\gamma_T \psi} d \log PCu < 0$$

As $d \log Y_T = d \log TFP_T$, TFP_T is also a negative function of PCu . As e_T depends positively on Y_T , labor utilization rate in sector T is a negative function of PCu as well.

Differentiating $d \log Y_T / d \log PCu$ with respect to $1 - \gamma_T$ we obtain:

$$\frac{d^2 \log Y_T}{d \log(PCu) d(1 - \gamma_T)} = -\frac{(1 + \psi)}{\psi \gamma_T} < 0$$

The sign of this cross-derivative carries on to TFP_T and e_T .

C.2 Proof Lemma 1

The NT sector production function in log-differences is given by:

$$d \log Y_{NT} = \gamma_{NT} d \log e_{NT} + (1 - \gamma_{NT}) d \log M_{NT}$$

The labor utilization function in log-differences is in turn given by:

$$d \log e_{NT} = d \log P_{NT} + d \log Y_{NT} - d \log w_{NT}$$

From the effort supply function we obtain:

$$d \log e_{NT} = \frac{1}{\psi} d \log w_{NT}$$

Combining effort supply and demand to solve for w_{NT} in log-differences:

$$\begin{aligned} \frac{1}{\psi} d \log w_{NT} &= d \log P_{NT} + d \log Y_{NT} - d \log w_{NT} \\ \Rightarrow d \log w_{NT} &= \frac{\psi}{1 + \psi} (d \log P_{NT} + d \log Y_{NT}) \end{aligned}$$

Substituting in the effort labor supply function:

$$d \log e_{NT} = \frac{1}{1 + \psi} (d \log P_{NT} + d \log Y_{NT})$$

On the other hand, the materials demand function in log differences is given by:

$$d \log M_{NT} = d \log P_{NT} + d \log Y_{NT} - d \log P_{Cu}$$

Substituting in the production function:

$$d \log Y_{NT} = \frac{\gamma_{NT}}{1 + \psi} (d \log P_{NT} + d \log Y_{NT}) + (1 - \gamma_{NT}) (d \log P_{NT} + d \log Y_{NT} - d \log P_{Cu})$$

Solving for $d \log Y_{NT}$ one gets:

$$d \log Y_{NT} = \frac{(1 + \psi(1 - \gamma_{NT}))}{\gamma_{NT}\psi} d \log P_{NT} - \frac{(1 + \psi)(1 - \gamma_{NT})}{\gamma_{NT}\psi} d \log P_{Cu}$$

To solve for the demand for NT goods we need to solve for $d \log E$ first. GDP is given by:

$$E = \gamma_T P_T Y_T + \gamma_{NT} P_{NT} Y_{NT} + P_{Cu} \bar{C}_u$$

In log-differences:

$$d \log E = \phi_T d \log Y_T + (1 - \phi_T - \phi_{Cu}) (d \log P_{NT} + d \log Y_{NT}) + \phi_{Cu} d \log P_{Cu}$$

From the NT demand schedule and the NT market clearing condition we know:

$$d \log E = d \log P_{NT} + d \log Y_{NT}$$

We can then substitute for $d \log P_{NT} + d \log Y_{NT}$ in the expression for $d \log E$ above and solve for $d \log E$. We get:

$$d \log E = \frac{\phi_T}{\phi_T + \phi_{Cu}} d \log Y_T + \frac{\phi_{Cu}}{\phi_T + \phi_{Cu}} d \log P_{Cu}$$

Substituting for $d \log Y_T$ from Proposition 1's proof:

$$\begin{aligned} d \log E &= -\frac{\phi_T}{\phi_T + \phi_{Cu}} \frac{(1 - \gamma_T)(1 + \psi)}{\gamma_T \psi} d \log P_{Cu} + \frac{\phi_{Cu}}{\phi_T + \phi_{Cu}} d \log P_{Cu} \\ \Rightarrow d \log E &= \left(\frac{\phi_{Cu} \gamma_T \psi - \phi_T (1 - \gamma_T)(1 + \psi)}{\gamma_T \psi (\phi_T + \phi_{Cu})} \right) d \log P_{Cu} \end{aligned}$$

If $d \log E / d \log P_{Cu} > 0$ then:

$$\phi_{Cu} \gamma_T \psi > \phi_T (1 - \gamma_T)(1 + \psi) \iff \frac{\phi_{Cu}}{\phi_T} > \frac{(1 - \gamma_T)(1 + \psi)}{\gamma_T \psi}$$

Given that $d \log E = d \log P_{NT} + d \log Y_{NT}$, we have:

$$d \log Y_{NT} = \left(\frac{\phi_{Cu} \gamma_T \psi - \phi_T (1 - \gamma_T)(1 + \psi)}{\gamma_T \psi (\phi_T + \phi_{Cu})} \right) d \log P_{Cu} - d \log P_{NT}$$

Combining NT supply and demand:

$$\begin{aligned} \frac{(1 + \psi(1 - \gamma_{NT}))}{\gamma_{NT} \psi} d \log P_{NT} - \frac{(1 + \psi)(1 - \gamma_{NT})}{\gamma_{NT} \psi} d \log P_{Cu} &= \\ \left(\frac{\phi_{Cu} \gamma_T \psi - \phi_T (1 - \gamma_T)(1 + \psi)}{\gamma_T \psi (\phi_T + \phi_{Cu})} \right) d \log P_{Cu} - d \log P_{NT} & \end{aligned}$$

We can then solve for $d \log P_{NT}$ to get:

$$d \log P_{NT} = \frac{(\gamma_T \phi_{Cu} (1 + \psi - \gamma_{NT}) + (1 + \psi) \phi_T (\gamma_T - \gamma_{NT}))}{(1 + \psi) \gamma_T (\phi_T + \phi_{Cu})} d \log P_{Cu}$$

Then I substitute for $d \log P_{NT}$ in the expression for $d \log Y_{NT}$ of above and solve to get:

$$d \log Y_{NT} = \frac{(\psi \phi_{Cu} \gamma_T \gamma_{NT} - (1 + \psi) \phi_T (1 + \psi(1 - \gamma_{NT}) - \gamma_T))}{\psi (1 + \psi) \gamma_T (\phi_T + \phi_{Cu})} d \log P_{Cu}$$

Hence, for $d \log Y_{NT} / d \log P_{Cu} > 0$ we need:

$$\begin{aligned} \psi \phi_{Cu} \gamma_T \gamma_{NT} - (1 + \psi) \phi_T (1 + \psi(1 - \gamma_{NT}) - \gamma_T) &> 0 \\ \iff \frac{\phi_{Cu}}{\phi_T} &> \frac{(1 + \psi)(1 + \psi(1 - \gamma_{NT}) - \gamma_T)}{\psi \gamma_T \gamma_{NT}} \end{aligned}$$

C.3 Proof Proposition 2

We have that:

$$d \log(e_{NT}/e_T) = \frac{1}{1 + \psi_e} (d \log P_{NT} + d \log Y_{NT} - d \log Y_T)$$

Differentiating both sides by $\log PCu$:

$$\frac{d \log(e_{NT}/e_T)}{d \log PCu} = \frac{1}{1 + \psi_e} \left(\frac{d \log P_{NT} + d \log Y_{NT}}{d \log PCu} - \frac{d \log Y_T}{d \log PCu} \right)$$

From the non-tradables demand schedule we know that $d \log E = d \log P_{NT} + d \log Y_{NT}$. Hence:

$$\frac{d \log(e_{NT}/e_T)}{d \log PCu} = \frac{1}{1 + \psi_e} \left(\frac{d \log E}{d \log PCu} - \frac{d \log Y_T}{d \log PCu} \right)$$

As $d \log E/d \log PCu > 0$ and $d \log Y_T/d \log PCu < 0$ per Proposition 1, then $d \log(e_{NT}/e_T)/d \log PCu > 0$, which means $d \log(TFP_{NT}/TFP_T)/d \log PCu > 0$ and $d \log(Y_{NT}/Y_T)/d \log PCu > 0$

C.4 Proof Proposition 3

The elasticity of real GDP, E^{real} , with respect to PCu is given by:

$$\frac{d \log E^{real}}{d \log PCu} = \phi_T \frac{d \log Y_T}{d \log PCu} + \phi_{NT} \frac{d \log Y_{NT}}{d \log PCu}$$

For this to be positive we need:

$$\frac{d \log Y_{NT}}{d \log PCu} > - \frac{\phi_T}{\phi_{NT}} \frac{d \log Y_T}{d \log PCu}$$

Substituting from the proof to Proposition 1:

$$\frac{d \log Y_{NT}}{d \log PCu} > \frac{\phi_T}{\phi_{NT}} \frac{(1 - \gamma_T)(1 + \psi_e)}{\gamma_T \psi_e}$$

From the proof to Proposition 2 we have:

$$\frac{d \log Y_{NT}}{d \log PCu} = \frac{\psi_e \phi_{Cu} \gamma_T \gamma_{NT} - (1 + \psi_e) \phi_T (1 + \psi_e (1 - \gamma_{NT}) - \gamma_T)}{\psi_e (1 + \psi_e) \gamma_T (\phi_T + \phi_{Cu})}$$

We can substitute the expression of above into the condition for $d \log E^{real}/d \log PCu$.

I will solve for ϕ_{NT} after using the fact that $\phi_{Cu} + \phi_T = 1 - \phi_{NT}$. I obtain:

$$\phi_{NT} > \frac{(1 - \gamma_T)(1 + \psi_e)^2}{\gamma_T \psi_e \left[\frac{\phi_{Cu}}{\phi_T} \gamma_{NT} - (1 + \psi_e) \left(1 - \frac{\gamma_{NT}}{\gamma_T} \right) \right]}$$

D Additional Tables from Quantitative Model Section

TABLE D.1 - INDUSTRY DEFINITIONS

#	Industry	1996 IO Table	ISIC Rev. 3
1	Agriculture, hunting, forestry, and fishing	1-5	1-2,5
2	Copper	9	132
3	Other mining and quarrying	6-8,10	10-12,131,14
4	Meat products	11	1511
5	Seafood and fish products	12	1512
6	Fruit and vegetables products	13	1513
7	Oils and fats	14	1514
8	Dairy	15	152
9	Grain mill products	16	1531,1532
10	Animal feeds	17	1533
11	Bakery products	18	1541
12	Sugar	19	1542
13	Other food products	20	1543-1549
14	Liquors and spirits	21	1551
15	Wine	22	1552
16	Beer	23	1553
17	Non-alcoholic beverages	24	1554
18	Tobacco products	25	16
19	Textiles	26	17
20	Wearing apparel	27	18
21	Leather and leather products	28	1911,1912
22	Footwear	29	192
23	Wood and wood products	30	20
24	Paper and paper products	31	21
25	Printing and reproduction of recorded media	32	22
26	Coke and refined petroleum products	33	23
27	Basic chemicals	34	241
28	Other chemical products	35	242
29	Rubber products	36	251

30	Plastic products	37	252
31	Glass and glass products	38	261
32	Other non-metallic mineral products	39	269
33	Basic iron and steel	40	271
34	Non-ferrous metals	41	272
35	Metal products	42	28
36	Non-electrical machinery and equipment	43	29
37	Electrical machinery and equipment	44	30
38	Transport equipment	45	34,35
39	Furniture	46	36
40	Other manufacturing industries	47	37
41	Electricity, gas, and water	48-50	40,41
42	Construction	51	45
43	Services	52-73	50-93

TABLE D.2 - OUTPUT ELASTICITIES

Industry	Capital	Labor	Materials
Agriculture	0.251	0.247	0.502
Copper	0.397	0.141	0.462
Other mining	0.272	0.194	0.533
Meat products	0.245	0.058	0.697
Seafood products	0.198	0.104	0.698
Produce-based products	0.201	0.116	0.684
Oils and fats	0.219	0.050	0.731
Dairy	0.176	0.086	0.738
Grain mill products	0.124	0.066	0.810
Animal feeds	0.057	0.032	0.911
Bakery products	0.269	0.135	0.596
Sugar	0.349	0.051	0.600
Other food products	0.317	0.093	0.590
Liquors	0.217	0.108	0.675
Wine	0.278	0.103	0.619
Beer	0.239	0.105	0.656
Non-alcoholic beverages	0.319	0.094	0.587
Tobacco products	0.773	0.023	0.203
Textiles	0.263	0.157	0.580
Wearing apparel	0.206	0.199	0.596
Leather products	0.305	0.145	0.550
Footwear	0.291	0.175	0.535
Wood products	0.316	0.117	0.567
Paper products	0.294	0.091	0.614
Printing	0.283	0.234	0.483
Refined petroleum products	0.383	0.020	0.597
Basic chemicals	0.250	0.108	0.642
Other chemical products	0.313	0.160	0.527
Rubber products	0.181	0.190	0.629
Plastic products	0.123	0.156	0.721
Glass products	0.308	0.154	0.538
Other non-metallic mineral products	0.314	0.133	0.553

Basic iron and steel	0.321	0.163	0.515
Non-ferrous metals	0.302	0.112	0.586
Metal products	0.293	0.161	0.546
Non-electrical machinery	0.104	0.175	0.721
Electrical machinery	0.125	0.191	0.685
Transport equipment	0.273	0.153	0.574
Furniture	0.321	0.153	0.526
Other manufacturing industries	0.214	0.211	0.575
Electricity, gas, and water	0.410	0.092	0.498
Construction	0.259	0.278	0.463
Services	0.341	0.275	0.385

TABLE D.3 - 1996 CONSUMPTION AND GDP SHARES

Industry	Consumption	GDP Share
Agriculture	0.044	0.058
Copper	0.000	0.060
Other mining	0.000	0.012
Meat products	0.045	0.008
Seafood products	0.005	0.006
Produce-based products	0.010	0.005
Oils and fats	0.006	0.001
Dairy	0.021	0.004
Grain mill products	0.007	0.002
Animal feeds	0.001	0.001
Bakery products	0.027	0.007
Sugar	0.005	0.002
Other food products	0.014	0.006
Liquors	0.004	0.001
Wine	0.004	0.003
Beer	0.004	0.001
Non-alcoholic beverages	0.015	0.004
Tobacco products	0.013	0.007
Textiles	0.007	0.007
Wearing apparel	0.050	0.005
Leather products	0.003	0.001
Footwear	0.020	0.004
Wood products	0.000	0.010
Paper products	0.009	0.012
Printing	0.007	0.010
Refined petroleum products	0.021	0.015
Basic chemicals	0.001	0.003
Other chemical products	0.036	0.013
Rubber products	0.001	0.002
Plastic products	0.006	0.004
Glass products	0.001	0.001
Other non-metallic mineral products	0.002	0.009

Basic iron and steel	0.000	0.004
Non-ferrous metals	0.000	0.003
Metal products	0.005	0.011
Non-electrical machinery	0.010	0.003
Electrical machinery	0.018	0.001
Transport equipment	0.028	0.005
Furniture	0.008	0.004
Other manufacturing industries	0.009	0.001
Electricity, gas, and water	0.020	0.030
Construction	0.001	0.100
Services	0.512	0.553

E Quantitative Model Solution

E.1 Households

The household's problem is:

$$\begin{aligned}
 V_t \left(B_t, \{N_{jt}\}_{j=1}^J \right) &= \max_{\mathbf{v}_t} \frac{u \left(C_t, \{N_{jt}\}_{j=1}^J, \{e_{jt}\}_{j=1}^J \right)^{1-\sigma}}{1-\sigma} + \beta \mathbb{E}_t \left[V_{t+1} \left(B_{t+1}, \{N_{j,t+1}\}_{j=1}^J \right) \right] \\
 \text{s.t. } B_{t+1} + \sum_{j=1}^J P_{jt} C_{jt} &= (1+r_t) B_t + \sum_{j=1}^J w_{jt} e_{jt} N_{jt} + \sum_{j=1}^J \pi_{jt} \\
 C_t &= \prod_{j=1}^J C_{jt}^{\alpha_j}
 \end{aligned} \tag{24}$$

where $\mathbf{v}_t = \{B_{t+1}, \{C_{jt}\}_{j=1}^J, \{e_{jt}\}_{j=1}^J, \{N_{j,t+1}\}_{j=1}^J\}$. Let $\Omega_t = C_t - \sum_{j=1}^J \frac{N_{jt}^{1+\psi_n}}{1+\psi_n} - \chi \sum_{j=1}^J N_{jt} \frac{e_{jt}^{1+\psi_e}}{1+\psi_e}$.

FOC w.r.t. C_t :

$$\Omega_t^{-\sigma} - \lambda_t = 0 \tag{25}$$

FOC w.r.t. B_{t+1} :

$$-\lambda_t + \beta \mathbb{E}_t \left[\frac{\partial V_{t+1} \left(B_{t+1}, \{N_{j,t+1}\}_{j=1}^J \right)}{\partial B_{t+1}} \right] = 0 \tag{26}$$

FOC w.r.t. e_{jt} :

$$-\chi N_{jt} e_{jt}^{\psi_e} \Omega_t^{-\sigma} + \lambda_t w_{jt} N_{jt} = 0 \tag{27}$$

FOC w.r.t. $N_{j,t+1}$:

$$\beta \mathbb{E}_t \left[\frac{\partial V_{t+1} \left(B_{t+1}, \{N_{j,t+1}\}_{j=1}^J \right)}{\partial N_{j,t+1}} \right] = 0 \tag{28}$$

Envelope conditions:

$$\frac{\partial V_t \left(B_{t+1}, \{N_{jt}\}_{j=1}^J \right)}{\partial N_{jt}} = \left(w_{jt} e_{jt} - N_{jt}^{\psi_n} - \chi \frac{e_{jt}^{1+\psi_e}}{1+\psi_e} \right) \Omega_t^{-\sigma} \tag{29}$$

$$\frac{\partial V_t \left(B_t, \{N_{jt}\}_{j=1}^J \right)}{\partial B_t} = (1+r_t) \Omega_t^{-\sigma} \tag{30}$$

Combining (25), (26), and (30):

$$\Omega_t^{-\sigma} = \beta(1 + r_{t+1})\mathbb{E}_t [\Omega_{t+1}^{-\sigma}] \quad (31)$$

Combining (25) and (27):

$$e_{jt} = \left(\frac{w_{jt}}{\chi} \right)^{\frac{1}{\psi_e}} \quad (32)$$

Combining (28), and (29):

$$\mathbb{E}_t \left[\left(w_{jt+1}e_{jt+1} - N_{jt+1}^{\psi_n} - \chi \frac{e_{jt+1}^{1+\psi_e}}{1+\psi_e} \right) \Omega_{t+1}^{-\sigma} \right] = 0 \quad (33)$$

FOC w.r.t. C_{jt} :

$$C_{jt} = \alpha_j \frac{C_t}{P_{jt}} \quad (34)$$

E.2 Firms

The problem of a sector j firm can be stated as follows:

$$\begin{aligned} \mathcal{V}_{jt}(K_{jt}) &= \max_{\mathbf{x}_{jt}} \pi_{jt} + \frac{1}{1+r_{t+1}} \mathbb{E}_t [\mathcal{V}_{jt+1}(K_{jt+1})] \\ \text{s.t. } \pi_{jt} &= P_{jt}Y_{jt} - w_{jt}L_{jt} - \sum_{i=1}^J P_{it}M_{ij,t} - P_{jt} \left(I_{jt} + \frac{\tau}{2} (K_{jt+1} - K_{jt})^2 \right) \\ Y_{jt} &= Z_j(u_{jt}K_{jt})^{\gamma_{jk}} L_{jt}^{\gamma_{jn}} \prod_{i=1}^J M_{i,j,t}^{\varphi_{ij}} \\ K_{jt+1} &= I_{jt} + (1 - \delta_{jt})K_{jt} \\ \delta_{jt} &= \bar{\delta} \frac{u_{jt}^{1+\psi_u}}{1+\psi_u} \end{aligned} \quad (35)$$

where $\mathbf{x}_{jt} = \left\{ L_{jt}, u_{jt}, \{M_{ij,t}\}_{i=1}^J, I_{jt} \right\}$

FOC w.r.t. u_{jt} :

$$u_{jt} = \left(\gamma_{jk} \frac{Y_{jt}}{\bar{\delta} K_{jt}} \right)^{\frac{1}{1+\psi_u}} \quad (36)$$

FOC w.r.t. L_{jt} :

$$L_{jt} = \gamma_{jn} \frac{P_{jt}Y_{jt}}{w_{jt}} \quad (37)$$

FOC w.r.t. M_{ijt} :

$$M_{ijt} = \varphi_{ij} \frac{P_{jt} Y_{jt}}{P_{it}} \quad (38)$$

FOC w.r.t. I_{jt} :

$$-P_{jt} (1 + \tau (K_{jt+1} - K_{jt})) + \frac{1}{1 + r_{t+1}} \mathbb{E}_t \left[\frac{\partial \mathcal{V}_{jt+1}(K_{jt+1})}{\partial K_{jt+1}} \right] = 0 \quad (39)$$

Envelope condition:

$$\frac{\partial \mathcal{V}_{jt}(K_{jt})}{\partial K_{jt}} = P_{jt} \left(\gamma_{jk} \frac{Y_{jt}}{K_{jt}} + 1 - \delta_{jt} + \tau (K_{jt+1} - K_{jt}) \right) \quad (40)$$

Combining (39) and (40):

$$P_{jt} (1 + \tau (K_{jt+1} - K_{jt})) = \frac{1}{1 + r_{t+1}} \mathbb{E}_t \left[P_{jt+1} \left(\frac{\gamma_{jk} Y_{jt+1}}{K_{jt+1}} + \tau (K_{jt+2} - K_{jt+1}) + (1 - \delta_{jt+1}) \right) \right] \quad (41)$$

E.3 Market clearing conditions

Labor market:

$$L_{jt} = e_{jt} N_{jt} \quad (42)$$

Non-tradable goods:

$$Y_{jt} = C_{jt} + I_{jt} + \frac{\tau}{2} (K_{jt+1} - K_{jt})^2 + \sum_{i=1}^J M_{ji,t} \quad (43)$$

Balance of payments:

$$B_{t+1} + \sum_{j=1}^J P_{jt} \left(C_{jt} + I_{jt} + \frac{\tau}{2} (K_{jt+1} - K_{jt})^2 + \sum_{i=1}^J M_{ji,t} \right) = (1 + r_t) B_t + \sum_{j=1}^J P_{jt} Y_{jt} \quad (44)$$

Endogenous interest-rate premium

$$1 + r_t = 1 + r^* + \phi(\exp\{\bar{B} - B_t\} - 1) \quad (45)$$

Exogenous copper price process:

$$\log P_{Cu,t} = \rho_{Cu} P_{Cu,t-1} + \varepsilon_{Cu,t} \quad (46)$$

with $\varepsilon_{Cu,t} \sim N(0, \sigma_{Cu}^2)$

E.4 Equations of the Model

$$\Omega_t = C_t - \sum_{j=1}^J \frac{N_{jt}^{1+\psi_n}}{1+\psi_n} - \chi \sum_{j=1}^J N_{jt} \frac{e_{jt}^{1+\psi_e}}{1+\psi_e} \quad (47)$$

$$\Omega_t^{-\sigma} = \beta(1+r_{t+1})\mathbb{E}_t[\Omega_{t+1}^{-\sigma}] \quad (48)$$

$$e_{jt} = \left(\frac{w_{jt}}{\chi}\right)^{\frac{1}{\psi_e}} \quad (49)$$

$$\mathbb{E}_t \left[\left(w_{jt+1}e_{jt+1} - N_{jt+1}^{\psi_n} - \chi \frac{e_{jt+1}^{1+\psi_e}}{1+\psi_e} \right) \Omega_{t+1}^{-\sigma} \right] = 0 \quad (50)$$

$$u_{jt} = \left(\gamma_{jk} \frac{Y_{jt}}{\delta K_{jt}} \right)^{\frac{1}{1+\psi_u}} \quad (51)$$

$$e_{jt}N_{jt} = \gamma_{jn} \frac{P_{jt}Y_{jt}}{w_{jt}} \quad (52)$$

$$M_{ij,t} = \varphi_{ij} \frac{P_{jt}Y_{jt}}{P_{it}} \quad (53)$$

$$Y_{jt} = Z_j(u_{jt}K_{jt})^{\gamma_{jk}} L_{jt}^{\gamma_{jn}} \prod_{i=1}^J M_{i,j,t}^{\varphi_{ij}} \quad (54)$$

$$P_{jt}(1+\tau(K_{jt+1}-K_{jt})) = \frac{1}{1+r_{t+1}}\mathbb{E}_t \left[P_{jt+1} \left(\frac{\gamma_{jk}Y_{jt+1}}{K_{jt+1}} + \tau(K_{jt+2}-K_{jt+1}) + (1-\delta_{jt+1}) \right) \right] \quad (55)$$

$$\delta_{jt} = \delta \frac{u_{jt}^{1+\psi_u}}{1+\psi_u} \quad (56)$$

$$C_{jt} = \alpha_j \frac{C_t}{P_{jt}} \quad (57)$$

$$K_{jt+1} = I_{jt} + (1-\delta_{jt})K_{jt} \quad (58)$$

$$Y_{jt} = C_{jt} + I_{jt} + \frac{\tau}{2}(K_{jt+1}-K_{jt})^2 + \sum_{i=1}^J M_{ji,t} \quad j \in \mathcal{J}^{NT} \quad (59)$$

$$B_{t+1} + \sum_{j=1}^J P_{jt} \left(C_{jt} + I_{jt} + \frac{\tau}{2}(K_{jt+1}-K_{jt})^2 + \sum_{i=1}^J M_{ji,t} \right) = (1+r_t)B_t + \sum_{j=1}^J P_{jt}Y_{jt} \quad (60)$$

$$1+r_t = 1+r_t^* + \phi(\exp\{\bar{B}-B_t\}-1) \quad (61)$$

$$\mathbb{E}_t[\log P_{Cu,t+1}] = \rho_{Cu} \log P_{Cu,t} \quad (62)$$

There are 29 tradable and 14 non-tradable industries. Hence, we have $43 \times 9 + 43^2 + 14 + 4 = 2254$ equations. It will be helpful to reduce the dimensionality of the system if possible.

E.5 Solution of the Model

E.5.1 Steady State

$$\Omega = C - \sum_{j=1}^J \frac{N_j^{1+\psi_n}}{1+\psi_n} - \chi \sum_{j=1}^J N_j \frac{e_j^{1+\psi_e}}{1+\psi_e} \quad (63)$$

$$1 = \beta(1+r) \quad (64)$$

$$e_j = \left(\frac{w_j}{\chi} \right)^{\frac{1}{\psi_e}} \quad (65)$$

$$w_j e_j - N_j^{\psi_n} - \chi \frac{e_j^{1+\psi_e}}{1+\psi_e} = 0 \quad (66)$$

$$u_j = \left(\gamma_{jk} \frac{Y_j}{\delta K_j} \right)^{\frac{1}{1+\psi_u}} \quad (67)$$

$$e_j N_j = \gamma_{jn} \frac{P_j Y_j}{w_j} \quad (68)$$

$$M_{ij} = \varphi_{ij} \frac{P_j Y_j}{P_i} \quad (69)$$

$$Y_j = Z_j (u_j K_j)^{\gamma_{jk}} L_j^{\gamma_{jn}} \prod_{i=1}^J M_{ij}^{\varphi_{ij}} \quad (70)$$

$$K_j = \frac{\gamma_{jk} Y_j}{r + \delta_j} \quad (71)$$

$$\delta_j = \bar{\delta} \frac{u_j^{1+\psi_u}}{1+\psi_u} \quad (72)$$

$$C_j = \alpha_j \frac{C}{P_j} \quad (73)$$

$$K_j = I_j + (1 - \delta_j) K_j \quad (74)$$

$$Y_j = C_j + I_j + \sum_{i=1}^J M_{ji} \quad \text{if sector is non-tradable} \quad (75)$$

$$\sum_{j=1}^J P_j \left(C_j + I_j + \sum_{i=1}^J M_{ji} \right) = rB + \sum_{j=1}^J P_j Y_j \quad (76)$$

$$1 + r = 1 + r^* + \phi(\exp\{\bar{B} - B\} - 1) \quad (77)$$

Solution

From (77):

$$1 + r^* + \phi(\exp\{\bar{B} - B\} - 1) = \frac{1}{\beta}$$

Solving for \bar{B} :

$$B = \bar{B} - \log \left(1 + \frac{1}{\phi} \left(\frac{1}{\beta} - 1 - r^* \right) \right) \quad (78)$$

Combining (65) and (68):

$$e_j = \left[\frac{\gamma_{jn} P_j Y_j}{\chi N_j} \right]^{\frac{1}{1+\psi_e}}$$

Combining (65) and (66):

$$N_j = \left[\frac{\psi_e}{1 + \psi_e} \chi e_j^{1+\psi_e} \right]^{\frac{1}{\psi_n}}$$

Substituting for e_j from the expression from above and solving for N_j :

$$N_j = \left[\frac{\psi_e}{1 + \psi_e} \gamma_{jn} P_j Y_j \right]^{\frac{1}{1+\psi_n}} \quad (79)$$

Substituting for N_j in the expression for e_j from above:

$$e_j = \left[\frac{(\gamma_{jn} P_j Y_j)^{\psi_n} (1 + \psi_e)}{\chi^{1+\psi_n} \psi_e} \right]^{\frac{1}{(1+\psi_n)(1+\psi_e)}} \quad (80)$$

Therefore, L_j is given by:

$$L_j = \left[\left(\frac{\psi_e}{1 + \psi_e} \right)^{\psi_e} \frac{(\gamma_{jn} P_j Y_j)^{1+\psi_e+\psi_n}}{\chi^{1+\psi_n}} \right]^{\frac{1}{(1+\psi_n)(1+\psi_e)}} \quad (81)$$

Combining (67) and (71):

$$u_j = \left(\frac{1 + \psi_u}{\psi_u} \frac{r}{\bar{\delta}} \right)^{\frac{1}{1+\psi_u}} \quad (82)$$

Hence:

$$\delta_j = \frac{r}{\psi_u} \quad (83)$$

And:

$$K_j = \frac{\psi_u}{1 + \psi_u} \frac{\gamma_{jk} Y_j}{r} \quad (84)$$

Combining (67), (68), (69), (70), and (71):

$$Y_j = \left(P_j^{\tilde{\gamma}_j} Z_j \right)^{\frac{1}{1-\tilde{\gamma}_j}} \times \left(\left(\frac{\psi_u}{1 + \psi_u} \frac{1}{r} \right)^{\psi_u} \frac{\gamma_{jk}^{1+\psi_u}}{\bar{\delta}} \right)^{\frac{\gamma_{jk}}{(1+\psi_u)(1-\tilde{\gamma}_j)}} \times \left(\left(\frac{\psi_e}{1 + \psi_e} \right)^{\psi_e} \frac{\gamma_{jn}^{1+\psi_e+\psi_n}}{\chi^{1+\psi_n}} \right)^{\frac{\gamma_{jn}}{(1+\psi_e)(1+\psi_n)(1-\tilde{\gamma}_j)}} \times \prod_{i=1}^J \left(\frac{\varphi_{ij}}{P_i} \right)^{\frac{\varphi_{ij}}{1-\tilde{\gamma}_j}} \quad (85)$$

where:

$$\tilde{\gamma}_j = \gamma_{jk} + \frac{\gamma_{jn}(1 + \psi_e + \psi_n)}{(1 + \psi_e)(1 + \psi_n)} + \sum_{i=1}^J \varphi_{ij}$$

For tradable firms we have P_j given, so we can solve directly for Y_{jt} . For non-tradable firms we need to clear the market. This means:

$$Y_j = C_j + I_j + \sum_{i=1}^J M_{ji}$$

From (73) and (76):

$$C = rB + \sum_{j=1}^J P_j \left(Y_j - I_j - \sum_{i=1}^J M_{ji} \right)$$

From (74):

$$I_j = \delta_j K_j = \frac{\gamma_{jk} Y_j}{1 + \psi_u}$$

Thus:

$$C = rB + \sum_{j=1}^J P_j \left(\left(1 - \frac{\gamma_{jk}}{1 + \psi_u} \right) Y_j - \sum_{i=1}^J \varphi_{ji} \frac{P_i Y_i}{P_j} \right)$$

Simplifying a bit further:

$$C = rB + \sum_{j=1}^J \left(1 - \frac{\gamma_{jk}}{1 + \psi_u} \right) P_j Y_j - \sum_{j=1}^J \sum_{i=1}^J \varphi_{ji} P_i Y_i \quad (86)$$

So for non-tradable sectors:

$$Y_j = \alpha_j \frac{C}{P_j} + \frac{\gamma_{jk} Y_j}{1 + \psi_u} + \sum_{i=1}^J \varphi_{ji} \frac{P_i Y_i}{P_j}$$

Simplified:

$$\left(1 - \frac{\gamma_{jk}}{1 + \psi_u}\right) Y_j = \alpha_j \frac{C}{P_j} + \sum_{i=1}^J \varphi_{ji} \frac{P_i Y_i}{P_j}$$

Then we have a system of $J^{NT} + 1$ equations to solve for the J^{NT} prices of non-tradable goods and the steady-state level of the consumption composite, C . Once we have the prices of all sectoral goods and the consumption composite level, we can solve for all variables in this economy.

E.5.2 Dynamics

I will log-linearize equations (47) to (62). Let \hat{X}_t denote the log deviation of variable X from its steady-state value.

$$\hat{\Omega}_t = \omega_c \hat{C}_t - \sum_{j=1}^J \omega_{nj} \hat{N}_{jt} - \sum_{j=1}^J \omega_{ej} (\hat{N}_{jt} + (1 + \psi_e) \hat{e}_{jt}) \quad (87)$$

where $\omega_c = C/\Omega$, $\omega_{nj} = N_j^{1+\psi_n}/(\Omega(1 + \psi_n))$, and $\omega_{ej} = \chi N_j e_j^{1+\psi_e}/(\Omega(1 + \psi_e))$.

$$-\sigma \hat{\Omega}_t = \hat{R}_{t+1} - \sigma \mathbb{E}_t [\hat{\Omega}_{t+1}] \quad (88)$$

where $R_t = 1 + r_t$.

$$\hat{e}_{jt} = \frac{1}{\psi_e} \hat{w}_{jt} \quad (89)$$

Equation (50) can be log-linearized in the following way. First, I will rewrite it as:

$$\mathbb{E}_t [w_{jt+1} e_{jt+1} \Omega_{t+1}^{-\sigma}] = \mathbb{E}_t \left[\left(N_{jt+1}^{\psi_n} + \frac{\chi}{1 + \psi_e} e_{jt+1}^{1+\psi_e} \right) \Omega_{t+1}^{-\sigma} \right]$$

After applying log-linearization rules to the above equation I get:

$$\mathbb{E}_t [\hat{w}_{jt+1}] = \frac{\psi_e \psi_n}{1 + \psi_e} \hat{N}_{jt+1} \quad (90)$$

$$\hat{u}_{jt} = \frac{1}{1 + \psi_u} (\hat{Y}_{jt} - \hat{K}_{jt}) \quad (91)$$

$$\hat{e}_{jt} + \hat{N}_{jt} = \hat{P}_{jt} + \hat{Y}_{jt} - \hat{w}_{jt} \quad (92)$$

$$\hat{M}_{ij,t} = \hat{P}_{jt} + \hat{Y}_{jt} - \hat{P}_{it} \quad (93)$$

$$\hat{Y}_{jt} = \gamma_{jk} (\hat{u}_{jt} + \hat{K}_{jt}) + \gamma_{jn} (\hat{e}_{jt} + \hat{N}_{jt}) + \sum_{i=1}^J \varphi_{ij} \hat{M}_{ij} \quad (94)$$

$$\begin{aligned} \hat{P}_{jt} + \tau K_j (\hat{K}_{jt+1} - \hat{K}_{jt}) = & \mathbb{E}_t [\hat{P}_{jt+1}] - \hat{R}_{t+1} + \frac{r(1 + \psi_u)}{(1 + r)\psi_u} (\mathbb{E}_t [\hat{Y}_{jt+1}] - \hat{K}_{jt+1}) \\ & + \frac{\tau K_j}{1 + r} (\mathbb{E}_t [\hat{K}_{jt+2}] - \hat{K}_{jt+1}) - \frac{r}{(1 + r)\psi_u} \mathbb{E}_t [\hat{\delta}_{jt+1}] \end{aligned} \quad (95)$$

$$\hat{\delta}_{jt} = (1 + \psi_u) \hat{u}_{jt} \quad (96)$$

$$\hat{C}_{jt} = \hat{C}_t - \hat{P}_{jt} \quad (97)$$

$$\hat{I}_{jt} = \frac{1}{\delta_j} \hat{K}_{jt+1} - \frac{1 - \delta_j}{\delta_j} \hat{K}_{jt} + \hat{\delta}_{jt} \quad (98)$$

$$\hat{Y}_{jt} = s_{cj} \hat{C}_{jt} + s_{kj} \hat{I}_{jt} + \sum_{i=1}^J s_{mji} \hat{M}_{ji,t} \quad (99)$$

where $s_{cj} = C_j/Y_j$, $s_{kj} = I_j/Y_j$, and $s_{mji} = M_{ji}/Y_j$. This equation holds for every $j \in \mathcal{J}^{NT}$.

$$\begin{aligned} \varsigma_b \hat{B}_{t+1} = & R \varsigma_b (\hat{R}_t + \hat{B}_t) - \hat{C}_t \\ & + \sum_{j=1}^J \left(\varsigma_{yj} (\hat{P}_{jt} + \hat{Y}_{jt}) - \varsigma_{kj} (\hat{P}_{jt} + \hat{I}_{jt}) - \sum_{i=1}^J \varsigma_{mji} (\hat{P}_{jt} + \hat{M}_{ji,t}) \right) \end{aligned} \quad (100)$$

where $\varsigma_b = B/C$, $\varsigma_{yj} = P_j Y_j / C$, $\varsigma_{kj} = P_j I_j / C$, and $\varsigma_{mji} = P_j M_{ji} / C$.

$$\hat{R}_t = \frac{R^*}{R} \hat{R}_t^* - \frac{\phi \exp\{\bar{B} - B\} B}{R} \hat{B}_t$$

I will assume that $\beta R^* = 1$ at the steady state, which implies $B = \bar{B}$, $R = R^*$, and that $R_t^* = R^* \forall t$. Thus:

$$\hat{R}_t = -\frac{\phi B}{R} \hat{B}_t \quad (101)$$

Finally, the copper price process is:

$$\mathbb{E}_t [\hat{P}_{Cu,t+1}] = \rho_{Cu} \hat{P}_{Cu,t} \quad (102)$$

System reduction

I will reduce the system to a system of equations in terms of the exogenous state variable, $\hat{P}_{Cu,t}$, the endogenous state variables $\{\hat{B}_t\}$, $\{\hat{K}_{jt}\}$, $\{\hat{N}_{jt}\}$, and the control variables, $\{\hat{C}_t\}$ and $\{\hat{P}_{jt}\}_{j \in \mathcal{J}^{NT}}$.

Substituting (87) into (88), and (101) into (88):

$$\begin{aligned} \gamma \left(\omega_c \hat{C}_t - \sum_{j=1}^J (\omega_{nj} + \omega_{ej}) \hat{N}_{jt} - \sum_{j=1}^J \omega_{ej} (1 + \psi_e) \hat{e}_{jt} \right) &= \frac{\phi \bar{B}}{R^*} \hat{B}_{t+1} \\ + \gamma \left(\omega_c \mathbb{E}_t[\hat{C}_{t+1}] - \sum_{j=1}^J (\omega_{nj} + \omega_{ej}) \mathbb{E}_t[\hat{N}_{jt+1}] - \sum_{j=1}^J \omega_{ej} (1 + \psi_e) \mathbb{E}_t[\hat{e}_{jt+1}] \right) \end{aligned} \quad (103)$$

Combining (89) and (92):

$$\hat{w}_{jt} = \frac{\psi_e}{1 + \psi_e} (\hat{P}_{jt} + \hat{Y}_{jt} - \hat{N}_{jt}) \quad (104)$$

Hence:

$$\hat{e}_{jt} = \frac{1}{1 + \psi_e} (\hat{P}_{jt} + \hat{Y}_{jt} - \hat{N}_{jt}) \quad (105)$$

From (91):

$$\hat{u}_{jt} + \hat{K}_{jt} = \frac{1}{1 + \psi_u} \hat{Y}_{jt} + \frac{\psi_u}{1 + \psi_u} \hat{K}_{jt} \quad (106)$$

From (105):

$$\hat{e}_{jt} + \hat{N}_{jt} = \frac{1}{1 + \psi_e} (\hat{P}_{jt} + \hat{Y}_{jt}) + \frac{\psi_e}{1 + \psi_e} \hat{N}_{jt} \quad (107)$$

Substituting (106), (107), and (93) into (94), and solving for \hat{Y}_{jt} we get:

$$\hat{Y}_{jt} = \Gamma_{pj} \hat{P}_{jt} + \Gamma_{kj} \hat{K}_{jt} + \Gamma_{nj} \hat{N}_{jt} - \sum_{i=1}^J \Gamma_{ij} \hat{P}_{it} \quad (108)$$

where:

$$\begin{aligned} \Gamma_{pj} &= \frac{\gamma_{jn}(1 + \psi_u) + (1 + \psi_e)(1 + \psi_u) \sum_{i=1}^J \varphi_{ij}}{(1 + \psi_e)(1 + \psi_u)(1 - \sum_{i=1}^J \varphi_{ij}) - \gamma_{jk}(1 + \psi_e) - \gamma_{jn}(1 + \psi_u)} \\ \Gamma_{kj} &= \frac{\gamma_{jk}(1 + \psi_e) \psi_u}{(1 + \psi_e)(1 + \psi_u)(1 - \sum_{i=1}^J \varphi_{ij}) - \gamma_{jk}(1 + \psi_e) - \gamma_{jn}(1 + \psi_u)} \\ \Gamma_{nj} &= \frac{\gamma_{jn}(1 + \psi_u) \psi_e}{(1 + \psi_e)(1 + \psi_u)(1 - \sum_{i=1}^J \varphi_{ij}) - \gamma_{jk}(1 + \psi_e) - \gamma_{jn}(1 + \psi_u)} \\ \Gamma_{ij} &= \frac{(1 + \psi_e)(1 + \psi_u) \varphi_{ij}}{(1 + \psi_e)(1 + \psi_u)(1 - \sum_{i=1}^J \varphi_{ij}) - \gamma_{jk}(1 + \psi_e) - \gamma_{jn}(1 + \psi_u)} \end{aligned}$$

We can then re-write (103) after applying (108) to (104) and (105):

$$\begin{aligned}
& \gamma \omega_c \hat{C}_t - \gamma \sum_{j=1}^J \omega_{ej} (\Gamma_{pj} + 1) \hat{P}_{jt} - \gamma \sum_{j=1}^J \omega_{ej} \Gamma_{kj} \hat{K}_{jt} - \gamma \sum_{j=1}^J (\omega_{nj} + \omega_{ej} \Gamma_{nj}) \hat{N}_{jt} \\
& + \gamma \sum_{j=1}^J \omega_{ej} \sum_{i=1}^J \Gamma_{ij} \hat{P}_{it} \\
& = \frac{\phi \bar{B}}{R^*} \hat{B}_{t+1} + \gamma \omega_c \mathbb{E}_t[\hat{C}_{t+1}] - \gamma \sum_{j=1}^J \omega_{ej} (\Gamma_{pj} + 1) \mathbb{E}_t[\hat{P}_{jt+1}] - \gamma \sum_{j=1}^J \omega_{ej} \Gamma_{kj} \hat{K}_{jt+1} \\
& - \gamma \sum_{j=1}^J (\omega_{nj} + \omega_{ej} \Gamma_{nj}) \hat{N}_{jt+1} + \gamma \sum_{j=1}^J \sum_{i=1}^J \omega_{ej} \Gamma_{ij} \mathbb{E}_t[\hat{P}_{i,t+1}]
\end{aligned} \tag{109}$$

Re-writing (90):

$$(\Gamma_{pj} + 1) \mathbb{E}_t[\hat{P}_{jt+1}] + \Gamma_{kj} \hat{K}_{jt+1} + (\Gamma_{nj} - 1 - \psi_n) \hat{N}_{jt+1} - \sum_{i=1}^J \Gamma_{ij} \mathbb{E}_t[\hat{P}_{i,t+1}] = 0 \tag{110}$$

Re-writing (97):

$$\begin{aligned}
0 & = \mathbb{E}_t[\hat{P}_{jt+1}] - \hat{P}_{jt} - \hat{R}_{t+1} - \tau K_j (\hat{K}_{jt+1} - \hat{K}_{jt}) \\
& + \frac{r}{(1+r)} \left(\Gamma_{pj} \mathbb{E}_t[\hat{P}_{jt+1}] + (\Gamma_{kj} - 1) \hat{K}_{jt+1} + \Gamma_{nj} \hat{N}_{jt+1} - \sum_{i=1}^J \Gamma_{ij} \mathbb{E}_t[\hat{P}_{i,t+1}] \right) \\
& + \frac{\tau K_j}{1+r} (\mathbb{E}_t[\hat{K}_{jt+2}] - \hat{K}_{jt+1})
\end{aligned} \tag{111}$$

Re-writing (99):

$$\begin{aligned}
& (\Gamma_{pj} + s_{cj} + \sum_{i=1}^J s_{mji}) \hat{P}_{jt} \\
& = s_{ci} \hat{C}_t + \frac{s_{kj}}{\delta_j} \hat{K}_{j,t+1} - \left(\Gamma_{kj} + s_{kj} \frac{(1 - \delta_j)}{\delta_j} \right) \hat{K}_{j,t} \\
& + \sum_{i=1}^J s_{mji} \left((\Gamma_{pi} + 1) \hat{P}_{i,t} + \Gamma_{ki} \hat{K}_{i,t} + \Gamma_{ni} \hat{N}_{i,t} - \sum_{h=1}^J \Gamma_{hi} \hat{P}_{h,t} \right)
\end{aligned} \tag{112}$$

Re-writing (100):

$$\begin{aligned}
& \zeta_B \hat{B}_{t+1} = \zeta_B (R - \phi \bar{B}) - \hat{C}_t \\
& + \sum_{j=1}^J (\zeta_{yj} (\Gamma_{pj} + 1) - \zeta_{kj}) \hat{P}_{jt} + \sum_{j=1}^J \left(\zeta_{yj} \Gamma_{kj} + \zeta_{kj} \frac{(1 - \delta_j)}{\delta_j} \right) \hat{K}_{jt} + \sum_{j=1}^J \zeta_{yj} \Gamma_{nj} \hat{N}_{jt} \\
& - \sum_{j=1}^J \frac{\zeta_{kj}}{\delta_j} \hat{K}_{j,t+1} - \sum_{j=1}^J \sum_{i=1}^J (\zeta_{yj} \Gamma_{ij} + \zeta_{mji} (\Gamma_{pi} + 1)) \hat{P}_{i,t} - \sum_{j=1}^J \sum_{i=1}^J \zeta_{mji} \Gamma_{ki} \hat{K}_{i,t} - \sum_{j=1}^J \sum_{i=1}^J \zeta_{mji} \Gamma_{ni} \hat{N}_{i,t} \\
& + \sum_{j=1}^J \sum_{i=1}^J \sum_{h=1}^J \zeta_{mji} \Gamma_{hi} \hat{P}_{h,t}
\end{aligned} \tag{113}$$

Therefore, equations (109)-(113) comprise the system of $2 + 2J + J^{NT}$ equations that with the J^T exogenous price processes solve the dynamics of the system.

At this stage, the dynamics of the system can be solved using standard linear rational expectations tool kits as described in Blanchard and Khan (1980) and Klein (2000). My calculations are based on the algorithms described in Klein (2000)

<p>Documentos de Trabajo Banco Central de Chile</p> <p>NÚMEROS ANTERIORES</p> <p>La serie de Documentos de Trabajo en versión PDF puede obtenerse gratis en la dirección electrónica:</p> <p>www.bcentral.cl/esp/estpub/estudios/dtbc.</p> <p>Existe la posibilidad de solicitar una copia impresa con un costo de Ch\$500 si es dentro de Chile y US\$12 si es fuera de Chile. Las solicitudes se pueden hacer por fax: +56 2 26702231 o a través del correo electrónico: bcch@bcentral.cl.</p>	<p>Working Papers Central Bank of Chile</p> <p>PAST ISSUES</p> <p>Working Papers in PDF format can be downloaded free of charge from:</p> <p>www.bcentral.cl/eng/stdpub/studies/workingpaper.</p> <p>Printed versions can be ordered individually for US\$12 per copy (for order inside Chile the charge is Ch\$500.) Orders can be placed by fax: +56 2 26702231 or by email: bcch@bcentral.cl.</p>
--	---

DTBC – 939

Commodity price shocks, factor utilization, and productivity dynamics

Gustavo González

DTBC – 938

Utilización de noticias de prensa como indicador de confianza económica en tiempo real

María del Pilar Cruz, Hugo Peralta, Juan Pablo Cova

DTBC – 937

Monetary Policy Spillover to Small Open Economies: Is the Transmission Different under Low Interest Rates?

Cao et al.

DTBC – 936

Domestic Linkages and the Transmission of Commodity Price Shocks

Damian Romero

DTBC – 935

Firm Export Dynamics and the Exchange Rate: A Quantitative Exploration

Bernabe Lopez-Martin

DTBC – 934

The Labor Earnings Gap, Heterogeneous Wage Phillips Curves, and Monetary Policy

Mario Giarda

DTBC – 933

The impact of climate change on economic output in Chile: past and future

Karla Hernández, Carlos Madeira

DTBC – 932

Risk modeling with option-implied correlations and score-driven dynamics

Marco Piña, Rodrigo Herrera

DTBC – 931

Nowcasting Chilean household consumption with electronic payment data

Marcus P. A. Cobb

DTBC – 930

Sentimiento en el Informe de Estabilidad Financiera del Banco Central de Chile J.

Sebastián Becerra, Alejandra Cruces

DTBC – 929

Inequality, Nominal Rigidities, and Aggregate Demand

Sebastian Diz, Mario Giarda, and Damián Romero

DTBC – 928

Rational Sentiments and Financial Frictions

Paymon Khorrami, Fernando Mendo

DTBC – 927

Saving Constraints, Inequality, and the Credit Market Response to Fiscal Stimulus

Jorge Miranda-Pinto, Daniel Murphy, Kieran James Walsh, Eric R. Young

DTBC – 926

Liquidez del sector corporativo chileno: estimación de disponibilidad de caja bajo escenarios de estrés

Jorge Fernández, Fernando Pino, María Ignacia Valencia

DTBC – 925

Procyclical fiscal policy and asset market incompleteness

Andrés Fernández, Daniel Guzman, Ruy E. Lama, Carlos A. Vegh

DTBC – 924

Reserve Accumulation and Capital Flows: Theory and Evidence from Non-Advanced Economies

Juan Pablo Ugarte

