

DOCUMENTOS DE TRABAJO

An Econometric Analysis on Survey-data-based Anchoring of Inflation Expectations in Chile

Carlos A. Medel

N° 825 Agosto 2018

BANCO CENTRAL DE CHILE





BANCO CENTRAL DE CHILE

CENTRAL BANK OF CHILE

La serie Documentos de Trabajo es una publicación del Banco Central de Chile que divulga los trabajos de investigación económica realizados por profesionales de esta institución o encargados por ella a terceros. El objetivo de la serie es aportar al debate temas relevantes y presentar nuevos enfoques en el análisis de los mismos. La difusión de los Documentos de Trabajo sólo intenta facilitar el intercambio de ideas y dar a conocer investigaciones, con carácter preliminar, para su discusión y comentarios.

La publicación de los Documentos de Trabajo no está sujeta a la aprobación previa de los miembros del Consejo del Banco Central de Chile. Tanto el contenido de los Documentos de Trabajo como también los análisis y conclusiones que de ellos se deriven, son de exclusiva responsabilidad de su o sus autores y no reflejan necesariamente la opinión del Banco Central de Chile o de sus Consejeros.

The Working Papers series of the Central Bank of Chile disseminates economic research conducted by Central Bank staff or third parties under the sponsorship of the Bank. The purpose of the series is to contribute to the discussion of relevant issues and develop new analytical or empirical approaches in their analyses. The only aim of the Working Papers is to disseminate preliminary research for its discussion and comments.

Publication of Working Papers is not subject to previous approval by the members of the Board of the Central Bank. The views and conclusions presented in the papers are exclusively those of the author(s) and do not necessarily reflect the position of the Central Bank of Chile or of the Board members.

Documentos de Trabajo del Banco Central de Chile
Working Papers of the Central Bank of Chile
Agustinas 1180, Santiago, Chile
Teléfono: (56-2) 3882475; Fax: (56-2) 3882231

An Econometric Analysis on Survey-data-based Anchoring of Inflation Expectations in Chile*

Carlos A. Medel
Central Bank of Chile

Abstract

In this article, I conduct certain econometric estimations aiming at analysing to what extent inflation expectations from public agents are anchored to the Central Bank of Chile's inflation target. Expectations anchoring is an important feature for the monetary policy in a small-open economy under inflation targeting with a floating exchange rate. It is understood as another central bank instrument, as it promotes price stability through the ability of authorities to manage inflation expectations. I provide evidence suggesting that agents' expectations, based on survey data, are firmly anchored, because of Central Bank of Chile policy actions. Within the fully-fledged inflation targeting era—starting in 2000—three periods are detected. These are (i) the pre-Global Financial Crisis (GFC) period, (ii) the post-GFC period until mid-2015, and (iii) the low inflation period afterwards. Particularly for the last period, the anchoring effect is clearer and pronounced.

Resumen

En este artículo se realizan ciertas estimaciones econométricas con el objetivo de analizar hasta qué punto las expectativas de inflación del público se encuentran anclados a la meta de inflación del Banco Central de Chile. El anclaje de expectativas es una característica importante de la política monetaria en una economía pequeña y abierta bajo metas de inflación con un tipo de cambio flotante. Se entiende como otro instrumento del banco central, ya que promueve la estabilidad de precios a través de la capacidad de las autoridades para conducir las expectativas de inflación. Se encuentra evidencia sugiriendo que las expectativas de los agentes, basadas en datos de encuestas, están firmemente ancladas, debido a las acciones de política del Banco Central de Chile. Dentro de la era de la meta de inflación, que comienza en 2000, se detectan tres períodos de anclaje. Estos son (i) el período anterior a la Crisis Financiera Global (CFG), (ii) el período posterior a la CFG hasta mediados de 2015, y (iii) el período posterior de baja inflación. Particularmente para el último período, el efecto de anclaje es más claro y pronunciado.

* I thank the comments and suggestions to Carlos Madeira, Juan Francisco Martínez, Pablo Medel, seminar participants at the *Financial Research Area* at the Central Bank of Chile, and an anonymous referee. I also thank to Consuelo Edwards for editorial services. All errors are the author's responsibility. The views and ideas expressed in this paper do not necessarily represent those of the Central Bank of Chile or its authorities.

E-mail: cmedel@bcentral.cl.

1 Introduction

To what extent are inflation expectations of public agents anchored to the Central Bank of Chile's (CBC) inflation target? In this article, I perform several econometric testing procedures in an attempt to answer this question. Expectations' anchoring is understood as another central bank instrument, in the sense that it helps to promote price stability through the ability of authorities to influence inflation expectations. Thus, expectations anchoring comes out as a result of policy actions. I provide evidence suggesting that agents' expectations are indeed anchored. This is found within the manoeuvring horizon of monetary policy. Furthermore, within the fully-fledged inflation targeting period—starting in 2000—three periods are detected. These are (i) the pre-Global Financial Crisis (GFC) period, (ii) the post-GFC period until mid-2015, and (iii) the low inflation period afterwards. Particularly for the last period, the anchoring effect is clearer and more pronounced.

The econometric analysis relies on the Łyziak and Paloviita (2017) approach, which can be understood as a battery of estimates and statistical inference, plus some other robustness estimations found in the related literature. These estimations include the analysis proposed by Ehrmann (2015) on the dependence of inflation expectations on actual inflation, and the pass-through of shorter- to longer-term expectations. I also investigate anchoring through the Bomfim and Rudebusch (2000) method, provided the relationship between long-term expectations deviations and target deviations. This analysis is extended to consider two communication tools employed by the CBC, *i.e.* the inflation target and the inflation forecasts contained in its Monetary Policy Report ("IPoM", from its Spanish name *Informe de Política Monetaria*). Lastly, I consider the vector autoregression (VAR)-based analysis proposed by Demertzis, Marcellino, and Viegli (2008, 2009) to derive the implicit inflation target contained in the expectations and the anchoring degree to that implicit target. For robustness purposes, I also analyse its dynamic evolution through a time-varying parameters version. I make use of the inflation expectations provided by the *Survey of Professional Forecasters*-equivalent for Chile¹, which despite the traditional criticism deserved for survey-based data contain several statistical advantages.² A special treatment to the GFC is given, as represent the period with major turbulences and de-anchoring evidence.

The anchoring of inflation expectations must be understood within the boundaries of the modern theory of optimal monetary policy (Bernanke *et al.*, 1999; Clarida, Galí, and Gertler, 1999; Woodford, 2003). Several authors have emphasised the benefits of a nominal anchor within the inflation targeting regime for price stability (see, for instance, Levin, Natalucci, and Piger, 2004, and Mishkin, 2007). Other authors extend its scope to lower output volatility (Mishkin

¹The original name in Spanish is *Encuesta de Expectativas Económicas* (literally "Economic Expectations Survey"). An introduction to this survey can be found in Pedersen (2010), and a comparison of its predictive power to other commonly used forecasts is found in Pincheira and Álvarez (2009).

²These advantages include a long sample, a sufficient number of respondents per month, a rolling event horizon—unlike *Consensus Forecasts* expectations—, and infrequent changes to the questionnaire. Nevertheless, it still has room for prospective accuracy improvements, as those proposed in Bentancor and Pincheira (2010). A general discussion on the advantages and shortcomings on the use of survey expectations data is provided in Cunningham, Desroches, and Santor (2010).

and Schmidt-Hebbel, 2002, 2007; Fatás, Mihov, and Rose, 2007). In operational terms, it is assumed that in a country within an inflation targeting regime, expectations must be related to the nominal anchor chosen by the central bank. Hence, the relation between inflation and its expectations must be weak (Levin, Natalucci, and Piger, 2004). Jochmann, Koop, and Potter (2010) have proposed a method to empirically analyse expectations' anchoring. The authors analyse the pass-through coefficient of short- to long-term expectations using breakeven inflation daily data. In a country with anchored expectations, the referred pass-through coefficient must be stable and small; constituting the main result of this investigation. Also, this article makes use of expectations measures focused in more than one horizon. This is worth mentioning since agents could fix their responses to match a longer horizon with the target. This fact is exacerbated with this dataset as its longest horizon coincides with that of monetary policy.

The rest of the article proceeds as follow. Section 2 reviews recent literature on inflation expectations anchoring, which is scarce for the Chilean case. Section 3 describes the dataset, comprised by actual inflation and its expectations from the public and from the central bank. Section 4 fully describes the econometric analysis and its results. Section 5 concludes.

2 Literature review

Several authors have emphasised the role of institutional commitment as a vehicle for price stability through a nominal anchor (see, for instance, Christiano and Gust, 2000; Mishkin, 2007). In particular, for inflation-targeting countries, setting an explicit figure to which base monetary policy bring attached several areas to be managed by the central bank. These are referred to, in part, as communication and transparency; the building blocks of the credibility needed to succeed at controlling inflation (Geraats, 2010).

Communicational tools go beyond and complement the policy instruments available for authorities. The former is typically referred to the target itself, official economic outlook, parliamentary hearings, open letters, minutes content, and official periodic economic reports. Expectations anchoring refers to the ability of authorities to influence inflation expectations of the public (King, 2005), which in practice is channelled through a communicational strategy. Anchoring is achieved to both a credibility measure and a latent appraisal of authorities' ability to manage inflation to the target. Hence, firmly anchoring of inflation expectations is equivalent to a "disconnection" between them from actual inflation dynamics, but rather to more sensitivity to central bank communicational developments, considered as policy actions too.

Pierdzioch and Rülke (2013) empirically analyse the role of inflation targeting in 22 countries, including Chile. The authors find for most of the sample that forecasters scatter their inflation projections away from the inflation target. This result, however, does not necessarily contradict that inflation targets anchor inflation expectations in the long run. It suggests that short-run and medium-run forecasts are prone to, for example, a kind of strategic interaction effects among forecasters. Also including Chile, Gürkaynak *et al.* (2007) analyse long-run expectations anchoring using event study methodology with daily data—*i.e.* forward breakeven inflation. Even under this conceptually different econometric setup, the evidence supports that the inflation targeting regime has actually helped anchor long-run expectations.

De Pooter *et al.* (2014) also analyse long-run expectations anchoring in Chile. Remarkably, the authors make use of both survey- and financial-market-based daily measures of breakeven inflation to find a result like that provided in this article: anchoring has been more pronounced in the last decade because of improved credibility of the central bank. Also, investors do not seem to systematically alter their inflation expectations because of monetary policy surprises, consumer prices, or activity variables.

Empirical evidence on anchoring is mostly related to successful inflationary experiences under solid policy frameworks. In European countries, van der Cruijsen and Demertzis (2011) examine mentioned "disconnection" between actual inflation and expected inflation. The authors find a significant role of the European Central Bank breaking this relationship regarding expectations managing. Anderson and Maule (2014) assess the anchoring of short-term inflation expectations in the UK making use of Bank of England forecasts—also a successful anchoring case. Davis (2014) analyses survey data on inflation expectations of 36 developed and emerging countries, finding that in those countries that adopted an inflation targeting regime, the response of inflation expectations to both actual and expected inflation or oil price shocks becomes much less significant and less persistent.

A credible central bank can anchor long-term inflation expectations, but it can also affect short- and medium-term ones through its decisions and communication, especially through inflation forecasts. Pedersen (2015) shows the case of the Chilean economy. Empirical estimations suggest that central banks influence the same inflation expectations dataset used in this article, even when controlling for macroeconomic factors. Typically, de-anchoring risks are assessed by focusing solely on long-term expectations, but the responses of long-term inflation to macroeconomic news (see, for instance, Beechey, Johansen, and Levin, 2011; Nautz and Stroshal, 2015). Shorter-term inflation expectations have been also studied in the US (Dräger and Lamla, 2013).

Van der Cruijsen and Demertzis (2007) show that the degree of central bank transparency also affects the formation of inflation expectations, while Neuenkirch (2012) and El-Shagi and Jung (2015) extend its scope to short-term interest rate expectations. These findings are relevant because the publication of inflation forecasts constitutes one of the crucial determinants of central bank transparency, as suggested by Eijffinger and Geraats (2006) and Geraats (2010).

Note that managing inflation expectations is crucial for a central bank because of its role on price and wage formation. This fact is emphasised in Paloviita (2008), Forsells and Kenny (2010), and Ciccarelli and Osbat (2017) for European countries, Ball and Mazumder (2015) for the US, and Rusticelli, Turner, and Cavalleri (2015) for a set of countries within the *Organisation for Economic Co-operation and Development* (OECD), among many other articles. All these studies make use of a version of the *New Keynesian Phillips Curve* (NKPC) as a baseline framework. For the case of Chile, some reduced-form specification of the *Hybrid NKPC*—including direct measures of expectations in its baseline specification—are found in Medel (2015, 2017) and in Marcel, Medel, and Mena (2017) from a disaggregated services inflation perspective.

All the above-mentioned results heavily rely on how inflation expectations are measured. There is neither a unique nor a widely accepted way on how to measure the public's inflation expectations. The most common results come from survey-based datasets. However, financial data

also provide *direct* measures of expectations. The advantages and shortcomings of both ways are discussed in Cunningham, Desroches, and Santor (2010). An *indirect* manner of measuring inflation expectations is to infer the degree of anchoring from a model-based perspective as shown, for instance, in Leigh (2008) for the US economy.

In sum, the anchoring degree depends to a considerable extent on the policy framework. The adoption of an inflation-targeting scheme plays a significant role for expectations anchoring, but so does the transparency and communication strategy conducted by the central bank. These elements are certainly considered in this article, providing an up-to-date assessment of the role of official inflation forecasts and the inflation target in the Chilean economy. Unlike Pedersen (2015), this article also provides an estimation of a model-based implicit-anchored inflation in a unifying simple econometric framework.

3 Data

The dataset is composed of three kinds of inflation data: actual, expected, and forecast. The source of actual inflation is the *National Statistics Institute* (INE) and the CBC of the other series. The sample covers from 2001.9 to 2018.6 (201 observations) in monthly frequency. The start point corresponds to a year after the implementation of a fully-fledged inflation-targeting regime in Chile, and the beginning of the survey *Encuesta de Expectativas Económicas* (EEE). Three different consumer baskets are used to conform the actual linked-chain series (those of 2008, 2009, and 2013), being 2013 the current base basket.

Inflation expectations are obtained from the EEE. Each month, it reports the median as well as the first and ninth deciles of the distribution of nearly 40 responses (individuals are anonymous to the public). For the inflation series, it reports a forecast of the current month, next month, 11-months-ahead, 23-months-ahead, December of next calendar year, and December of two calendar years ahead. A caveat is that, unlike surveys conducted in the US and the Euro Zone, the questionnaire does not ask for a horizon greater than that of the monetary policy (24 months). I make use of those expectations at 11- and 23-months-ahead (labelled as EEE: Infl. 11 and EEE: Infl. 23). Forecast errors of both horizons suffer a high level of autocorrelation, and hence, previous forecast errors contain useful information to be used when the current forecast is built.

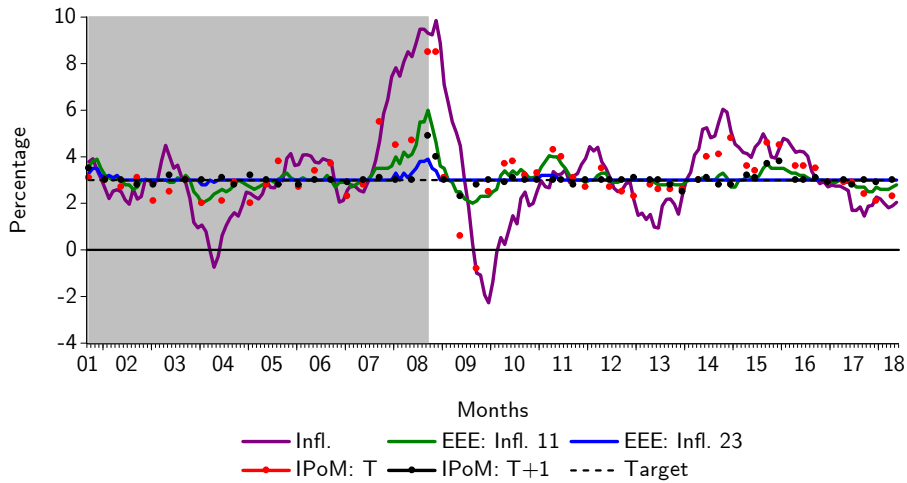
Official inflation forecasts are obtained from the IPoM. This report is issued quarterly as from after the GFC, and provides inflation forecasts for December of the current year, current-year annual average forecasts, two-years-ahead forecast, and for core inflation at the same horizons. I make use of the forecast for December of the current and next year (labelled as IPoM: T and IPoM: T+1). The availability of these official forecasts is different to that of the other series, but it contains enough observations (64 observations) to perform non-complex econometric analysis. Pedersen (2015) shows that, as these constitute official forecasts, they influence those of the public (*i.e.* EEE), exemplifying expectations' anchoring channelling in practice.

Table 1: Descriptive statistics of the time series (*)

	Mean	Median	St. dev.	Max.	Min.
Full sample: 2001.9-2018.5					
Inflation	3.282	3.043	1.985	9.853	-2.266
EEE: Infl. 11	3.083	3.000	0.553	6.000	2.000
EEE: Infl. 23	3.037	3.000	0.137	3.900	2.800
IPoM: Infl. T	3.288	3.100	1.359	8.500	-0.800
IPoM: Infl. $T+1$	3.064	3.000	0.386	4.900	2.300
Pre-GFC sample: 2001.9-2008.9					
Inflation	3.445	2.945	2.197	9.476	-0.747
EEE: Infl. 11	3.131	3.000	0.661	6.000	2.000
EEE: Infl. 23	3.066	3.000	0.191	3.900	2.800
IPoM: Infl. T	3.327	2.950	1.467	8.500	2.000
IPoM: Infl. $T+1$	3.086	3.000	0.437	4.900	2.800
Post-GFC sample: 2008.10-2018.5					
Inflation	3.141	2.929	2.040	9.853	-2.266
EEE: Infl. 11	3.073	3.000	0.531	6.000	2.000
EEE: Infl. 23	3.023	3.000	0.107	3.900	3.000
IPoM: Infl. T	3.341	3.100	1.585	8.500	-0.800
IPoM: Infl. $T+1$	3.062	3.000	0.420	4.900	2.300

(*) Source: Author's elaborations based on INE and CBC dataset.

Figure 1: Actual inflation, public expectations, and central bank forecasts (*)



(*) Shaded area=pre-GFC sample (2001.9-2008.9). Full sample: 2001.9-2018.5 (201 obs.).

Source: Author's elaboration based on INE and CBC datasets.

Some basic descriptive statistics are shown in Table 1.³ All the time-series are displayed in Figure 1. Quite evident is the impact of the commodity price boom and the GFC on the level

³Note that both kinds of expectations are already released in percentage, while the actual inflation rate is obtained from the Consumer Price Index (CPI), i.e. $Inflation_t = (CPI_t / CPI_{t-12}) \cdot 100 - 100$.

of the series. Remarkably, this was the period in which more observations of EEE: Infl. 23 were above 3% (8 observations). The IPoM: T+1 forecasts are also close to the target, whereas shorter-term forecast IPoM: T follows closely actual inflation observations. Most of the analysis considers split sample between pre- and post-GFC period, whose separating point is the month in which the *Lehman Brothers* bank files for bankruptcy (2008.9; hence, pre-GFC sample covers 2001.9-2008.9, while post-GFC sample covers 2008.10-2018.5).

4 Empirical analysis

The same three dimensions of inflation expectations anchoring of Łyziak and Paloviita (2017) are analysed. These are: (i) the response of expectations to actual inflation, (ii) the pass-through coefficient from shorter- to longer-term expectations, and (iii) the impact of the inflation target and central bank forecast on expectations. The analysis is then complemented with a time-varying parameter bivariate VAR including actual and expected inflation. These same estimates are later used to derive an implicit-anchored inflation series.

Note that the analysis considers the situation in which a central bank operates under an inflation targeting regime, and the inflation target acts as its nominal anchor. It is assumed that the central bank has enough credibility among the public—communicating their monetary policy with a high degree of transparency—to interpret deviations of actual inflation from the target as merely transitory. Thus, in the long run, the expectations as well as actual inflation would return to the target. Besides a high level of transparency regarding future developments of the monetary policy, the central bank could also be able to influence short-term expectations through communicational mechanisms, such as forecasts published in official reports. In this prospective context, de-anchoring effects must be understood as a change in the perception of agents on central bank tolerance to deviations of inflation away from the target. This effect could be translated as an increasing sensitivity of long-term expectations to shorter-term ones, and a higher sensitivity of expectations to current inflation.

In sum, expectations anchoring is a result of policy actions, as inflation fundamentals do not necessarily suggest an underlying prospective inflation always equal to 3%. Therefore, the public (*i.e.* survey respondents) possibly answer the survey by judging the ability of the central bank to drive inflation towards the target within the policy horizon.

4.1 Inflation expectations and actual inflation

I follow the Ehrmann (2015) procedure by estimating the equation (1) in levels of inflation:

$$\pi_{t|t+f}^{\mathcal{E}} = \alpha + \beta\pi_{t-1} + \varepsilon_t, \quad (1)$$

where $\pi_{t|t+f}^{\mathcal{E}}$ is the median of responses of EEE expectations at period f made in period t , π_{t-1} is actual inflation—lagged in one period, corresponding to the latest available observation

of actual inflation when expectations are made, and ε_t is an error term.⁴ Two versions of this equation are estimated using EEE: Infl. 11 and EEE: Infl. 23. As mentioned above, if the expectations are anchored, then they must react little and constantly to actual inflation. However, and as Figure 1 and Table 1 report, two different inflation regimes were observed during the sample period. For this reason, I also analyse equation (2):

$$\pi_{t|t+f}^{\mathcal{E}} = (1 - d^{crisis}) [\alpha^{pre} + \beta^{pre} \pi_{t-1}] + d^{crisis} [\alpha^{post} + \beta^{post} \pi_{t-1}] + \varepsilon_t, \quad (2)$$

where d^{crisis} is a dummy variable taking the value of 1 from 2008.10 onwards and 0 otherwise. Moreover, it is commonly accepted in the literature the changing nature of the anchoring effect and precisely by irruptions like the GFC, agents could evolve in their anchoring degree. For this reason, I also depict the β -coefficient in a rolling window scheme for the period 2006.9-2018.5 (*i.e.* accumulating the first 60 observations available to then move the entire fixed-size window until the last available observation; finally making use of the 201 available observations).

The estimation results of equations (1) and (2) are presented in Table 2. It is obtained that short-term expectations are more sensitive to actual inflation rather than are longer-term expectations, which has smaller variance. The goodness-of-fit for the EEE: Infl. 11 equation is nearly double that obtained for EEE: Infl. 23. When comparing the size of the coefficients, shorter-term expectations exhibit a coefficient more than five times bigger than that of longer-term expectations (0.183 versus 0.034). This result, however, must be understood statistically as a comparison of the coefficient of two different independent variables, recalling that EEE: Infl. 23 has by far less variation than EEE: Infl. 11. Nevertheless, compared to the results provided by Łyziak and Paloviita (2017) for the Euro Zone, these figures could be considered *small* (smallest estimate in Łyziak and Paloviita, 2017, achieves 0.023 with far-long run expectations for the Euro Area).

Table 2: Dependence of inflation expectations on actual inflation (*)

	Full sample (eq. 1)		Full sample with GFC dummy (eq. 2)			Wald test
	β	Adj. R^2	β^{pre}	β^{post}	Adj. R^2	NH: $\beta^{pre} = \beta^{post}$
EEE: Infl. 11	0.183	0.467	0.252	0.139	0.505	6.803
	[0.000]		[0.000]	[0.005]		[0.010]
EEE: Infl. 23	0.034	0.253	0.053	0.021	0.317	4.870
	[0.026]		[0.003]	[0.149]		[0.029]

(*) p -values in [·] using Newey-West heteroskedasticity and autocorrelation corrected standard errors. Source: Author's elaboration.

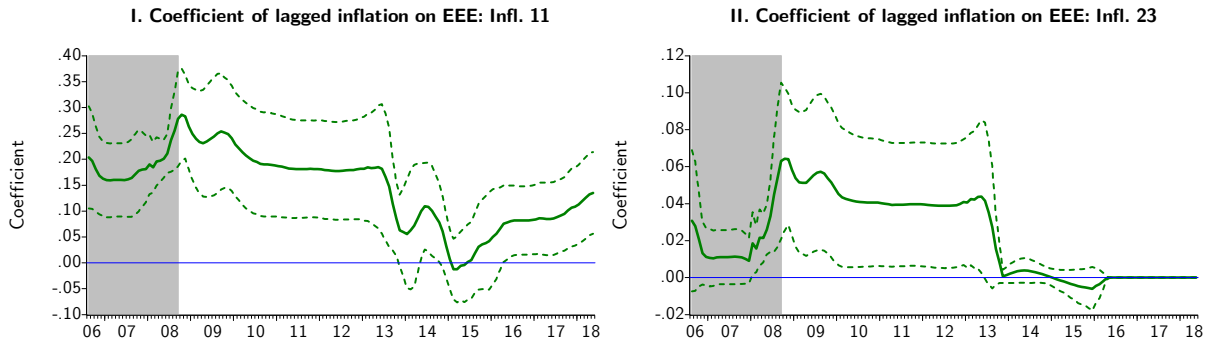
The GFC appears to have indeed an impact both statistically according to the Wald test and economically according to the estimates. For both types of expectations, the coefficient of lagged inflation decays between 50% and 60% for EEE: Infl. 11 and EEE: Infl. 23, respectively. Remarkably, the inflation coefficient in the regression of each kind of expectations decays after the GFC,

⁴Note that the standard deviation of all estimated coefficients makes use of the Newey and West (1987, 1994) heteroskedasticity and autocorrelation-corrected estimator. In this case, the standard ordinary least squares variance estimator is added to a second term whose size depends on weighted error's term autocorrelation coefficients. The weights, in turn, are based on an estimated bandwidth used for a (Bertlett) kernel to determine the length of the autocorrelation, under the assumption that it vanishes in time.

and at the same time, the goodness-of-fit coefficient increases, indicating that expectations are indeed better anchored after the GFC.

Aiming directly at analysing the dynamics of expected inflation sensitivity to inflation, Figure 2 shows the rolling estimates as a proxy of a time-varying specification. Note that in the Jochmann, Koop, and Potter (2010) sense, a stable low coefficient—far from unity—constitutes evidence of anchored expectations. In particular, Figure 2 remarks the impact of the GFC especially when using *EEE: Infl. 23* as the dependent variable. Interestingly, since mid-2013, another anchoring shift is noticed which persists until the end of the sample, plainly fulfilling the definition of inflation expectations anchorage. Finally, the panel II of Figure 2 also depicts an indetermination of the estimated coefficient since 2016.5, due to the null variability of the dependent variable (last valid estimation window: 2011.6-2016.5).

Figure 2: Dependence of expected inflation on lagged inflation, rolling estimates (*)



(*) Rolling window size=60 obs. First estimation sample: 2001.9-2006.8. Shaded area=pre-GFC sample. Confidence intervals= ± 2 standard deviations. Source: Author's elaboration.

4.2 Short- to long-run expectations pass-through

As mentioned above, long-run anchored expectations must not systematically react to shorter-run expectation developments. A stable pass-through coefficient from shorter- to longer-run is also evidence of anchoring, since central banks also use short-term forecasts as a policy instrument (Dräger and Lamla, 2013). To that end, the equation (3) is estimated:

$$\pi_{t|t+f_1}^{\mathcal{E}} = \alpha + \gamma \pi_{t|t+f_2}^{\mathcal{E}} + \nu_t, \quad (3)$$

where $f_1 > f_2$, in particular $f_1=23$ and $f_2=11$, and ν_t is an error term. However, and particularly in this case—where some variation in *EEE: Infl. 23* is noticed—the GFC dummy is also considered (equation 4):

$$\pi_{t|t+f_1}^{\mathcal{E}} = (1 - d^{crisis}) \left[\alpha^{pre} + \gamma^{pre} \pi_{t|t+f_2}^{\mathcal{E}} \right] + d^{crisis} \left[\alpha^{post} + \gamma^{post} \pi_{t|t+f_2}^{\mathcal{E}} \right] + \nu_t. \quad (4)$$

The results of coefficient estimations are presented in Table 3. A pass-through coefficient is obtained near 20% with the full sample, which is also similar to that obtained with the pre-GFC sample. Remarkably, the coefficient estimated for the period after the GFC drops 63%

to 0.155 (supporting a greater anchoring degree); however, not entirely surprising according the dynamics exhibited in Figure 1. This period is characterised by low inflation rates—also noticed internationally; see Draghi (2016)—below the target and even near zero. Despite a rapid increment observed from late 2013 until 2014, short-term expectations remained anchored to the inflation target, same as long-term expectations that remained fixed.

The regressions of Table 3 display a relatively high goodness-of-fit coefficient; even in a recursive estimation (not shown; available upon request). This is so because longer-term inflation expectations show very low variation throughout the sample, with some deviation observed during the GFC accompanied by a rise in short-term expectations. As the respondents answer both questions at the same time, the upward revisions coincide between both responses (and not necessarily with actual inflation). This allows short-term expectations to have a greater influence than actual inflation when explaining long-term expectations. Thus, the regressions in Table 3 show higher coefficients and a higher R^2 than those in Table 2.

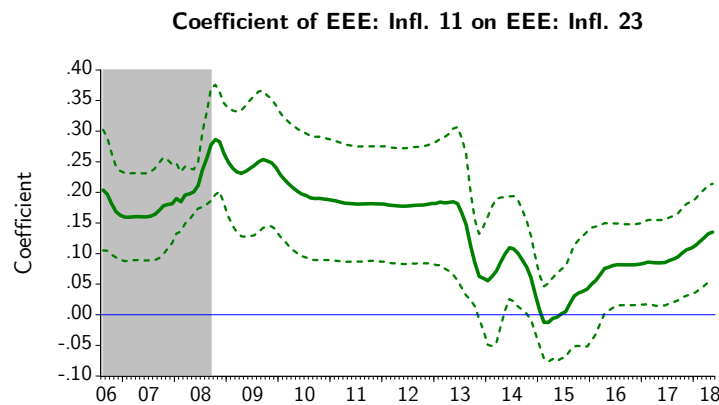
Table 3: Dependence of longer-run to shorter-run inflation expectations (*)

	Full sample (eq. 3)		Full sample with GFC (eq. 4)			Wald test
	γ	Adj. R^2	γ^{pre}	γ^{post}	Adj. R^2	NH: $\gamma^{pre} = \gamma^{post}$
EEE: Infl. 23	0.198	0.640	0.248	0.155	0.683	3.768
	[0.000]		[0.000]	[0.000]		[0.054]

(*) p -values in [·] using Newey-West heteroskedasticity and autocorrelation corrected standard errors. Source: Author’s elaboration.

Finally, rolling estimates of the γ -coefficient are also analysed in Figure 3, for the same period analysed in the previous subsection. Similar dynamics than before is found. In other words, a significant shift due to the GFC followed by a steady estimation surrounding 20%, to then lose statistical significance in 2015, and again become significant but lower than pre-2015 levels. This result is straightforward evidence of inflation expectations anchoring.

Figure 3: Dependence of longer-run on shorter-run expected inflation, rolling estimates (*)



(*) Rolling window size=60 obs. First estimation sample: 2001.9-2006.8. Shaded area=pre-GFC sample. Confidence intervals= ± 2 standard deviations. Source: Author’s elaboration.

4.3 Anchoring inflation expectations to the inflation target and central bank forecasts

This subsection analyses inflation expectations anchoring from a slightly different point of view as it includes central bank forecasts as well as the inflation target, both understood as policy actions. Figure 4 depicts the reaction of the public towards deviations of inflation to the target and official forecast through a sequence of scatter plots. The way how to read such figures is the following. By taking as an example the upper panels, the Y-axis plots absolute deviations of the expectations with respect to inflation, while the X-axis graphs deviations of inflation with respect to the target. Thus, the 45° line indicates that both deviations would move by the same amount. In other words, that expectations accommodate deviations away from the target.

It is important to note that the public (*i.e.* survey respondents) set their expectations, and therefore, control the slope of the line according to their preferences (expectations over or under actual inflation). If the line were completely horizontal, it would indicate that the deviations from expectations would be insensitive to the deviations of inflation from the target (perfect anchoring). If the line were to rise above 45°, it would indicate that the expectations would overreact to deviations from the target, suggesting a lower level of anchoring. Finally, a slope less than 45° suggests that expectations react less than deviations from the target, suggesting a higher level of anchoring. A similar logic applies to the case in which deviations are measured with respect to the IPoM (lower panels) instead of the inflation target.

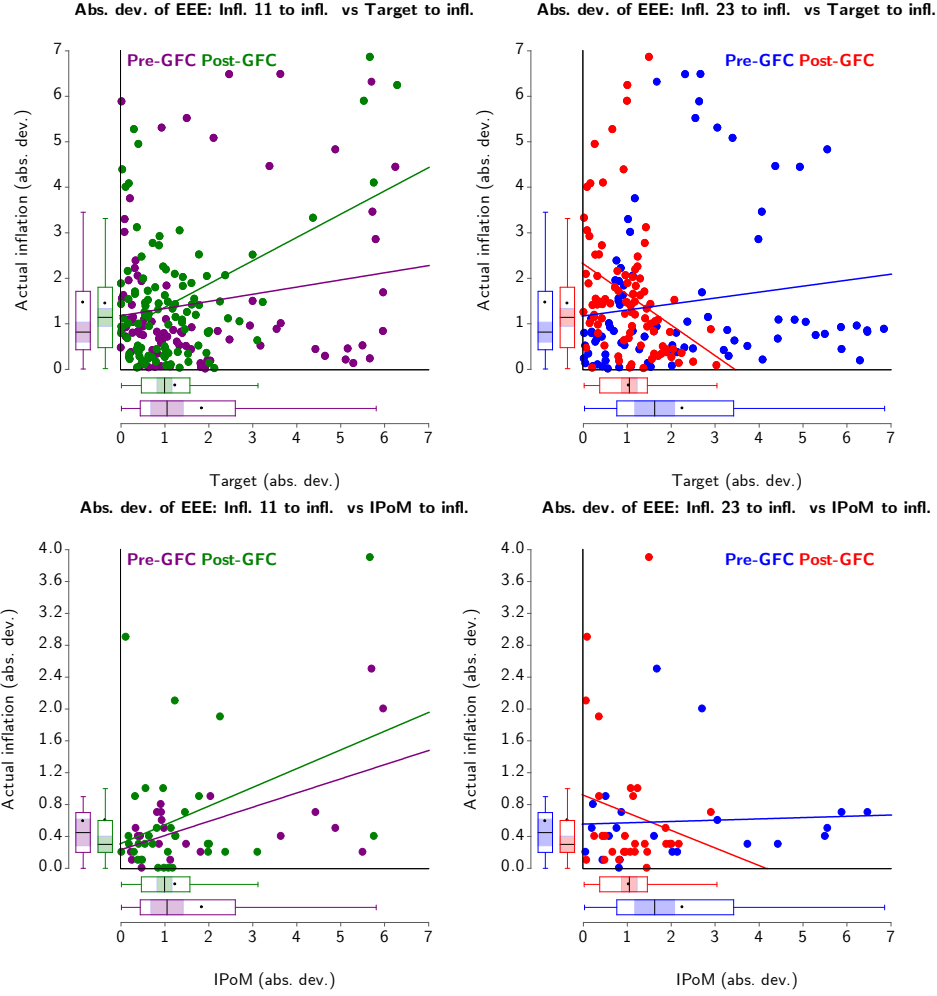
A negative slope is explained by the portion of observations that, during the GFC, reacted late to the rapid change in inflation, which went from 9.9% in 2008.11 to -2.3% in 2009.12, and then to 3.0% in 2011.1. As the IPoM forecasts were more accurate, and inflation approached the target faster, expectations increased their deviation. This, which generates a trend line with a negative slope, is evidence of strong de-anchoring. However, as noted, it is specifically due to the GFC period.

The results indicate a strong preference to deviations from the target rather than central bank forecast, particularly after the GFC. This is, the public reacts more to deviations from the target rather than deviations from IPoM forecasts. However, short-term central bank forecast also proved to be an effective tool for anchoring expectations, similar to the results obtained in Pedersen (2015). Indeed, since EEE: Infl. 23 has been almost always equal to the target, this also has been an important component to expectations' anchoring effectiveness, as will be discovered next.

A more formal analysis is based on the Bomfim and Rudebusch (2000) proposal. Initially, the authors conceive an inflation expectation as a weighted average between the target and lagged inflation, $\pi_{t|t+f}^{\mathcal{E}} = \lambda^{target} \pi_t^{target} + \lambda^{infl} \pi_{t-1}$, but no role is given to central bank forecast: π_{t+f}^{IPoM} . Hence, and following Łyziak and Paloviita (2017), the analysed equation corresponds to equation (5):

$$\pi_{t|t+f}^{\mathcal{E}} = \lambda^{target} \pi_t^{target} + \lambda^{IPoM} \pi_{t+f}^{IPoM} + (1 - \lambda^{target} - \lambda^{IPoM}) \pi_{t-1} + \zeta_t, \quad (5)$$

Figure 4: Absolute deviations of EEE: Infl. 11 and 23 from target versus absolute devitaton from current inflation, and absolute devitaton of EEE: Infl. 11 and 23 from IPoM versus absolute devitaton from current inflation (*)



(*) Pre-GFC sample: 2001.9-2008.9. Post-GFC sample: 2008.10-2018.5. Source: Author's elaboration.

where π_{t+f}^{IPoM} is the inflation forecast made by the central bank for December of the current year, and ζ_t is an error term. Also, note that equation (5) is built to interpret its coefficients as weights, following the original Bomfim and Rudebusch (2000) sense (and in this case, $\lambda^{infl} = 1 - \lambda^{target} - \lambda^{IPoM}$). Equation (5) allows to obtain the degree to which expectations are anchored by computing the figure $\lambda^{target} + \lambda^{IPoM}$. Again, a companion estimation to consider the impact of the GFC is made through equation (6):

$$\pi_{t|t+f}^{\mathcal{E}} = (1 - d^{crisis}) \left[\lambda_{pre}^{target} \pi_t^{target} + \lambda_{pre}^{IPoM} \pi_{t+f}^{IPoM} + (1 - \lambda_{pre}^{target} - \lambda_{pre}^{IPoM}) \pi_{t-1} \right] + d^{crisis} \left[\lambda_{post}^{target} \pi_t^{target} + \lambda_{post}^{IPoM} \pi_{t+f}^{IPoM} + (1 - \lambda_{post}^{target} - \lambda_{post}^{IPoM}) \pi_{t-1} \right] + \zeta_t. \quad (6)$$

Finally, the rolling window estimates of equation (5) are also considered for the same sample used before. The full-sample coefficient estimations are presented in Table 4. Remark-

ably, the biggest weight is assigned to the inflation target—in line with the results of previous subsections—, and this weight is unchangeably depending on the sample (according to the Wald test). More over, the central bank’s forecasts play a role especially for short-run expectations (0.295), 46% that of inflation target (0.640). When using long-run expectations, it achieves just a 6% of the weight associated to the target. When the sample is split, weights associated to IPoM and actual inflation are the only ones statistically different, while not economically substantial. What is more important from Table 4 is the fact that actual (lagged) inflation is not materially important for inflation expectations, neither short- nor long-run.

Table 4: Impact of actual inflation, inflation target, and central bank forecast on expectations (*)

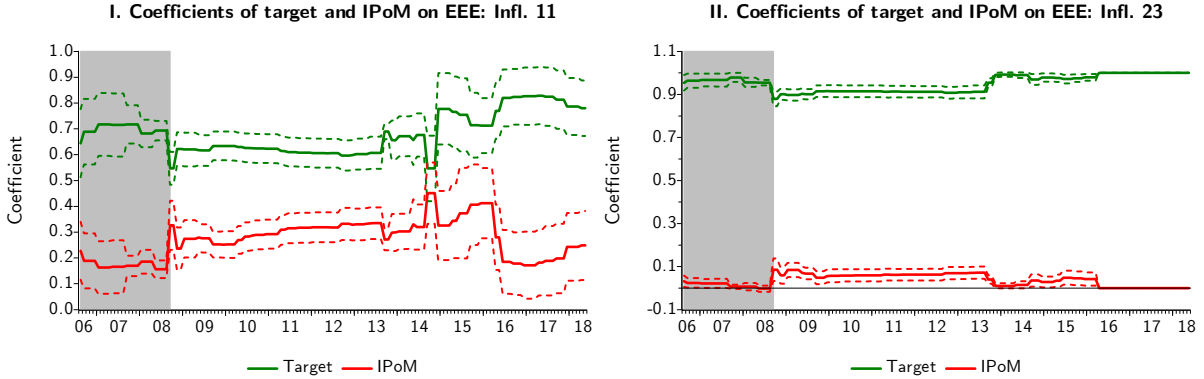
	EEE: Infl. 11 (eqs. 5 and 6)	EEE: Infl. 23 (eqs. 5 and 6)
Full sample: 2001.9-2018.5		
λ^{target}	0.640	0.927
	[0.000]	[0.000]
λ^{IPoM}	0.295	0.055
	[0.000]	[0.028]
λ^{infl}	0.065	0.018
Adj. R^2	0.744	0.468
Pre-GFC sample: 2001.9-2008.9		
λ_{pre}^{target}	0.692	0.950
	[0.000]	[0.000]
λ_{pre}^{IPoM}	0.161	0.006
	[0.000]	[0.733]
λ_{pre}^{infl}	0.147	0.044
Post-GFC sample: 2008.10-2018.5		
λ_{post}^{target}	0.638	0.926
	[0.000]	[0.000]
λ_{post}^{IPoM}	0.324	0.065
	[0.000]	[0.021]
λ_{post}^{infl}	0.038	0.009
Adj. R^2	0.754	0.483
Wald test (F-statistic and p -value)		
NH: $\lambda_{pre}^{target} = \lambda_{post}^{target}$	0.625	0.538
	[0.433]	[0.466]
NH: $\lambda_{pre}^{IPoM} = \lambda_{post}^{IPoM}$	5.002	3.437
	[0.029]	[0.069]
NH: $\lambda_{pre}^{infl} = \lambda_{post}^{infl}$	8.425	5.076
	[0.005]	[0.028]

(*) p -values in [·] using Newey-West heteroskedasticity and autocorrelation corrected standard errors. Source: Author’s elaboration.

Rolling window estimates shown in Figure 5 reveal that the coefficients obtained in Table 4 are

quite robust. Despite some changes during 2015, the estimates are stable, particularly for EEE: Infl. 23. These results reveal the effectiveness of anchoring inflation expectations by the CBC using the communicational instrument of short-term forecasts.

Figure 5: Weights of inflation target and central bank forecasts on inflation expectations, rolling estimates (*)



(*) Rolling window size=60 obs. First estimation sample: 2001.9-2006.8. Shaded area=pre-GFC sample. Source: Author's elaboration.

4.4 Anchors for inflation expectations: empirical estimates

This subsection follows the Demertzis, Marcellino, and Viegi (2008, 2009) approach to derive an empirical inflation target from expectations. The previous approach of Bomfim and Rudebusch (2000) assumes that the inflation target is already an anchor while in this approach the anchor is derived empirically. Consequently, the distance between the estimated and announced target acts as a central bank credibility check.

4.4.1 The bivariate VAR approach

Demertzis, Marcellino, and Viegi (2008, 2009) assume a bivariate VAR, which contains expected as well as actual inflation, as shown in equation (7):

$$\begin{bmatrix} \pi_t \\ \pi_{t|t+f}^{\mathcal{E}} \end{bmatrix} = \begin{bmatrix} a_0 \\ c_0 \end{bmatrix} + \begin{bmatrix} a(L) & b(L) \\ c(L) & d(L) \end{bmatrix} \begin{bmatrix} \pi_{t-p_\pi} \\ \pi_{t-p_\pi|t+f}^{\mathcal{E}} \end{bmatrix} + \begin{bmatrix} \varepsilon_{1,t} \\ \varepsilon_{2,t} \end{bmatrix}, \quad (7)$$

where a_0 and c_0 are intercepts (to be estimated); $a(L)$, $b(L)$, $c(L)$, and $d(L)$ are polynomials containing coefficients of the lagged variables of the VAR (where L is a backshift operator, $L^j x_t = x_{t-j}$), and $\varepsilon_{i,t}$ are white noises. The coefficients of each polynomial $\theta(L)$, $\Theta = \{a(\cdot), b(\cdot), c(\cdot), d(\cdot)\}$, are denoted by $\theta_1, \theta_2, \dots, \theta_{p_\theta}$, where p_θ is the lag length chosen as a block, *i.e.* $p_a=p_b=p_c=p_d$. In this case, the VAR lag length is chosen as the most frequent suggestion coming from five different criteria: (i) the sequential modified Lagrange multiplier test, (ii) the final prediction error, (iii) the Akaike Information Criterion (IC), (iv) the Bayesian IC, and (v)

the Hannan-Quinn IC. Following the majority rule, the results suggest in two out of five occasions a 7-term lag when using EEE: Infl. 11, and in three out of five cases an 11-term lag for EEE: Infl. 23.

The long-run solution of equation (7) delivers equation (8):

$$\begin{aligned}\pi &= \frac{a_0}{1 - a_1 - \dots - a_{p_a}} + \frac{b_1 + \dots + b_{p_b}}{1 - a_1 - \dots - a_{p_a}} \pi^\mathcal{E}, \\ \pi^\mathcal{E} &= \frac{c_0}{1 - d_1 - \dots - d_{p_d}} + \frac{c_1 + \dots + c_{p_c}}{1 - d_1 - \dots - d_{p_d}} \pi.\end{aligned}\quad (8)$$

As stated by Demertzis, Marcellino, and Viegi (2009), the anchoring effect is already based on the notion of Bomfim and Rudebusch (2000) by defining expected inflation as a weighted average between inflation target (π^* , now a parameter to be inferred) and lagged inflation (becoming $\pi_{t|t+f}^\mathcal{E} = \omega\pi^* + (1 - \omega)\pi_{t-1}$). The parameter $0 \leq \omega \leq 1$ measures the degree to which expectations are anchored ($\omega=1$: perfectly anchored to π^*). By plugging equation (8) in $\pi_{t|t+f}^\mathcal{E} = \omega\pi^* + (1 - \omega)\pi_{t-1}$, I obtain the components:

$$\omega\pi^* = \frac{c_0}{1 - d_1 - \dots - d_{p_d}}, \quad (1 - \omega) = \frac{c_1 + \dots + c_{p_c}}{1 - d_1 - \dots - d_{p_d}}, \quad (9)$$

and hence, the solution for π^* and the weight in the formation of inflation expectations (ω) are:

$$\pi^* = \frac{c_0}{1 - d_1 - \dots - d_{p_d} - c_1 - \dots - c_{p_c}}, \quad \omega = 1 - \frac{c_1 + \dots + c_{p_c}}{1 - d_1 - \dots - d_{p_d}}. \quad (10)$$

The estimation results are presented in Table 5 for two samples. Note that given the large number of estimated coefficients (chosen lags are 11 with EEE: Infl. 11 and 7 with EEE: Infl. 23), the full sample estimation is more conservative than that using a shorter sample. Using the full sample, I find an implicit anchor ranging from 3.020 to 3.059 across horizons; virtually equal to the announced target of 3%. When using the post-GFC sample, the same figures are obtained. Interestingly, within this period the maximum weight of expectation formation is achieved. These results emphasise that, despite some variability in expectations, these are coherent with the target when volatile inflation data is incorporated into the analysis.

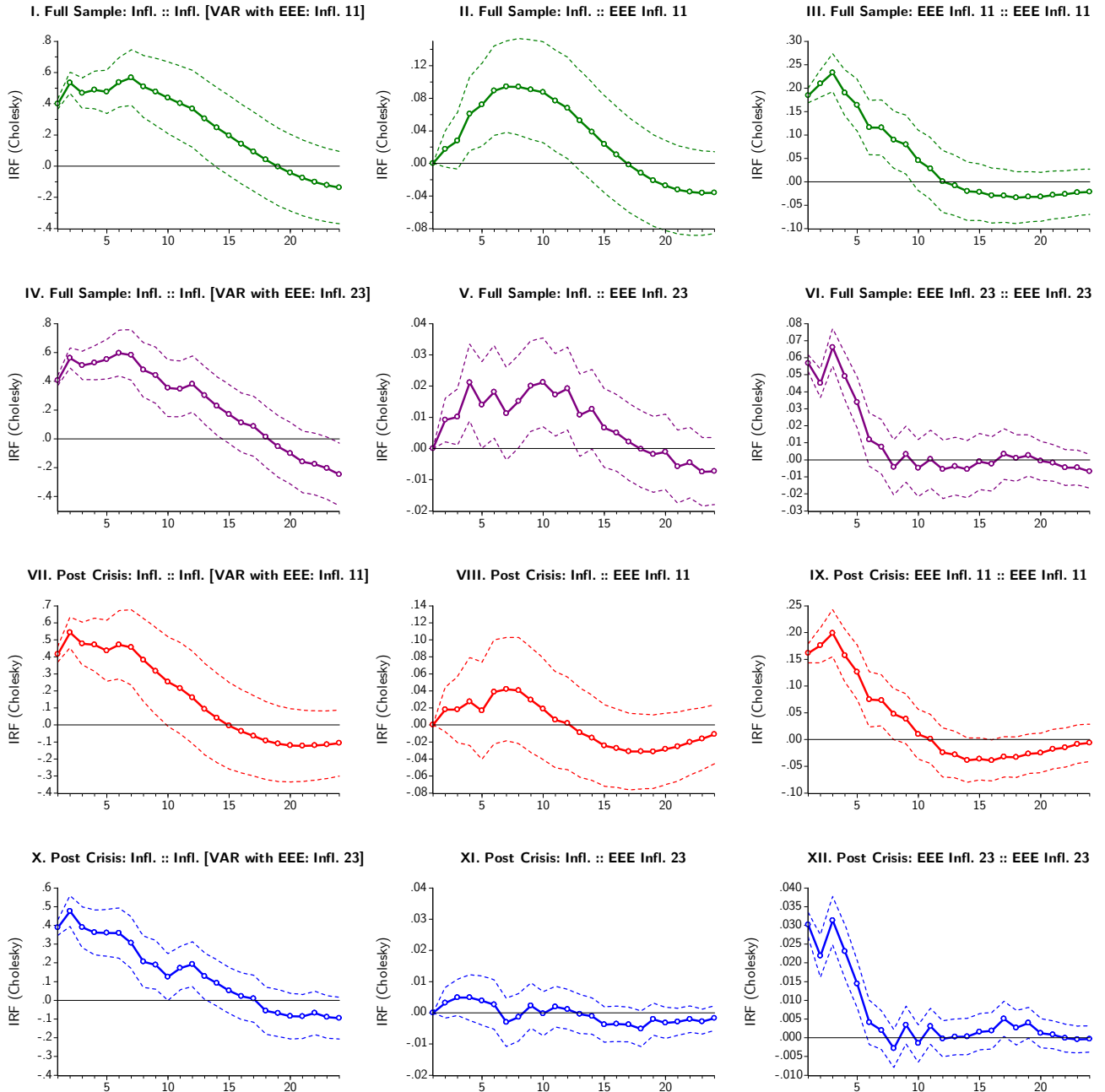
Table 5: Implicit anchors (π^*) and weights in the formation of expectations (ω) (*)

		Full sample	Post-GFC sample
EEE: Infl. 11	π^*	3.059	3.067
	ω	0.888	0.985
EEE: Infl. 23	π^*	3.020	3.009
	ω	0.969	1.006

(*) Source: Author's elaboration.

The analysis is then complemented with an impulse-response function estimations of actual inflation shocks. Following the above-mentioned argumentation, firmly anchored expectations must be invariant to actual inflation shocks. Figure 6 shows impulse response functions to +1 standard deviation shocks to actual inflation in the VAR specification of equation (7). For the reasons stated above, the preferred results are those estimated with the full sample.

Figure 6: Impulse-response function estimates of expectations on actual inflation (impulse :: response) (*)



(*) Full sample: 2001.9-2018.5. Post-GFC sample: 2008.10-2018.5. Bootstrapped confidence intervals=(5%,95%); 5000 replications. Shocks of +1 standard deviation of inflation.

Source: Author's elaboration.

The results of panels I and IV show the response of the inflation shock to itself; representing, thus, a measure of inflation persistence. Panels II and V, in turn, show some statistically signif-

icant impact shock from inflation to expectations, peaking at 0.094 and 0.021 basis points, close to 16% and 4% of those related to inflation persistence. However, the biggest impact to expectations comes from the expectations themselves (panels III and VI), peaking 0.233 and 0.066 basis points (41% and 11% of self-inflation shocks). These results, added to those of Figure 5, in which changes to the target followed by changes in IPoM forecasts influence the expectations more than actual inflation, leaves a secondary role to recent inflation developments in the formation of expectations. Nevertheless, this also plays a leading role to communicational instruments over actual inflation to re-anchor expectations, if needed.

When using the post-GFC sample, no statistically significant pass-through from inflation to expectations is found (panels VIII and XI). This result, while plainly supporting the anchoring of the inflation expectations hypothesis, must be read with caution given the particularly low inflation dynamics in the last part of the sample.

4.4.2 The time-varying parameters VAR approach

Previous VAR-based results are obtained from estimations using the whole sample available without leaving space to rolling estimates as before, supressing the option to discover different monetary policy credibility periods and the implicit-anchor evolution. As these estimates are directly related to coefficients estimation, in this subsection I analyse a time-varying parameter version of the VAR(1) of equation (7), similar to that specified in Demertzis, Marcellino, and Viegli (2008).⁵

$$\begin{bmatrix} \pi_t \\ \pi_t^{\mathcal{E}} \end{bmatrix} = \begin{bmatrix} a_t \\ d_t \end{bmatrix} + \begin{bmatrix} b_t & c_t \\ e_t & f_t \end{bmatrix} \begin{bmatrix} \pi_{t-p\pi} \\ \pi_{t-p\pi}^{\mathcal{E}} \end{bmatrix} + \begin{bmatrix} \varepsilon_{1,t} \\ \varepsilon_{2,t} \end{bmatrix}. \quad (11)$$

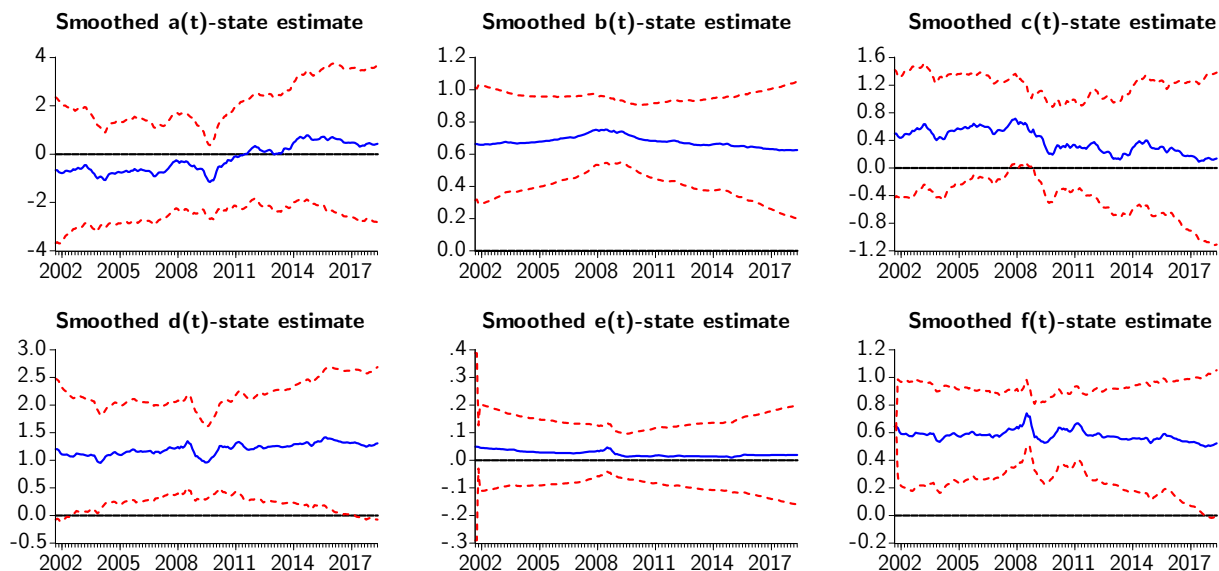
Note that all the time-varying coefficients $\{a_t, b_t, c_t, d_t, e_t, f_t\}$ are estimated using the Kalman filter and are assumed to evolve according to a random walk process. Both error terms are assumed to be independent from each other. Initial parameter calibration is taken from an ordinary least squares estimation using the whole sample.

The results are depicted in Figure 7. Overall, the results reveal that estimates are quite stable along the sample, and there are three parameters non-significant: the intercept term (a_t) and the expectations coefficient in the actual inflation equation (c_t), and that of the lag of actual inflation in the expected inflation equation (e_t).

Under this scheme, these results mean that persistence is the most critical component of inflation dynamics and expectations. Moreover, the steady estimates of Figure 7—and the accommodative swings during 2008—support the point estimates of Table 5, suggesting that inflation has been firmly anchored during the analysed sample. In econometric terms, actual lagged inflation does not come out as statistically significant due to the collinearity with lagged inflation expectation. However, when excluding the latter, lagged actual inflation is as significant as reported in Table 2.

⁵Some closer specifications used for the US economy can be found in Stock and Watson (1996), Cogley and Sargent (2005), and Clark and Nakata (2008).

Figure 7: Time-varying parameters estimates of VAR(1) (eq. 11) (*)



(*) Full sample: 2001.9-2018.5. Source: Author's elaboration.

4.4.3 A time-varying measure for credibility

In this subsection, previous time-varying coefficient estimates are used to report estimates across the sample of both the implicit-anchor (π_t^*) and the time-varying credibility measure, ω_t .

The results are presented in Figure 8. In panel I, jointly with π_t^* , the actual inflation rate and inflation target with $\pm 1\%$ band are also depicted. Remarkably, the green line (π_t^*) deviated from the range in just two episodes (8 observations in total, 4% of the observations): in 2008 jumping to 6.3% and in 2011 barely above 4%. In 21% of the times, the estimated implicit anchor is equal to 3%, and in 80% lies between 2.5% and 3.5%.

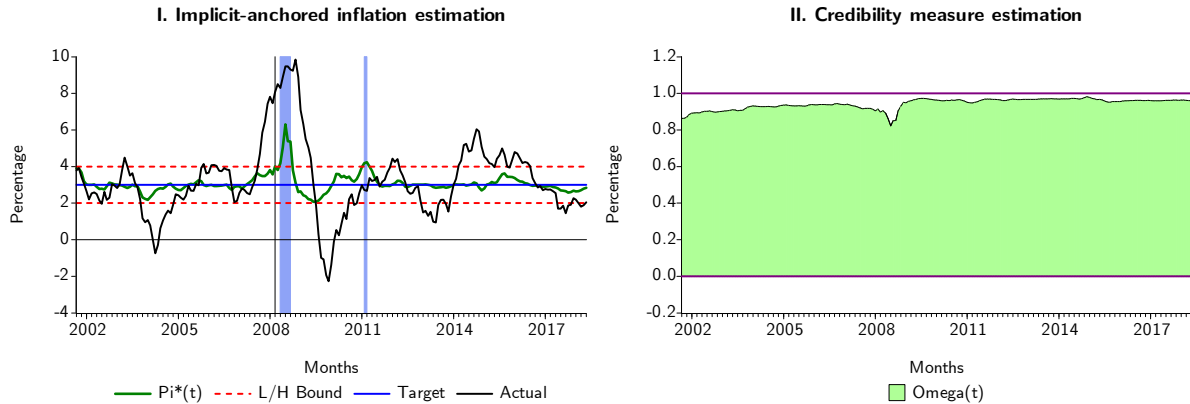
It is important to remark that when the implicit anchor deviates from the range it happens by justified common-knowledge reasons. These are the GFC and the rise of commodity prices in 2011; having the common characteristic of being—to some extent—unpredictable shocks.

The attitude of agents towards CBC's commitment is measured in panel II, as it depicts the ω_t parameter across the sample. This parameter is defined in equation (10) for the VAR(p) model and in this case, it makes use of time-varying estimates of equation (11), corresponding to:

$$\omega_t = 1 - \frac{e_t}{1 - f_t}. \quad (12)$$

This figure, in line with previous findings, reveal two episodes of inflation anchoring: pre- and post-GFC. From 2001.9 to 2008.9 the average reaches 91.5%, while from 2008.10 to 2018.5 it increases to 96.3% (and 99% of the times above the average of the previous period).

Figure 8: Time-varying implicit inflation anchor (π_t^*) and credibility estimation (ω_t) (eq. 12) (*)



(*) Shaded areas in panel I= π_t^* outside the $3\pm 1\%$ range. Full sample: 2001.9-2018.5.
Source: Author's elaboration.

These results are important because they support previous evidence on the existence of two regimes in expectations anchoring and the hysteresis provoked by the GFC on central bank credibility.

5 Summary and concluding remarks

I performed several econometric testing procedures aiming at analysing to what extent inflation expectations are anchored to the Central Bank of Chile's inflation target. Expectations anchoring is understood as another central bank instrument, in the sense that it helps to promote price stability through the ability of authorities to influence inflation expectations. Thus, the anchoring of expectations is a result of policy actions.

The econometric analysis relies on the Łyziak and Paloviita (2017) approach, which can be understood as a battery of statistical tests, plus some other robustness exercises found in the related literature. These include the dependence of expectations on actual inflation, the pass-through of shorter- to longer-term expectations, and the comparison between long-term expectations' deviations and CBC's target deviations. This last feature is extended to consider two communicational tools employed by the CBC, namely the inflation target and forecasts contained in the IPoM. Finally, a time-varying parameters VAR model is estimated to derive the implicit inflation target contained in the expectations, plus the anchoring degree to that implicit target. All empirical estimations are based on inflation expectations provided by the EEE survey.

I provide evidence suggesting that agents' expectations are indeed anchored. Estimated pass-through coefficients suggest three anchoring periods. These are (i) the pre-GFC period, (ii) the post-GFC period until the mid-2015, and (iii) the low inflation period afterwards.

I find that the pass-through coefficient to short-term expectations from actual inflation has declined in time, being null for the long-term expectations in the most recent period. The pass-through coefficient from short- to long-run expectations has diminished 65% after the GFC, becoming non-significant in the last period. In a context where most of the times the 23-month horizon expectation is equal to 3%, the public reacts more to deviations from the target rather than to deviations from actual inflation.

Estimated implicit-anchored inflation point is found to be equal to the target. Furthermore, time-varying estimates of implicit-anchored expectations lies 96% of the times within the target range of $3\pm 1\%$. Finally, credibility measures fully support the CBC's commitment with price stability throughout the inflation-targeting period.

Some further research would involve expectations anchoring to a subset of prices, as well as understanding how often and in what manner agents include more information in expectations formation. These findings could also be compared to those coming from different agents, such as consumers, investors, and domestic versus foreign market participants. Any discrepancy between them will allow to disentangle the effect of communicational tools employed by central banks valuing their underlying effectiveness.

References

1. Anderson G. and B. Maule (2014), "[Assessing the Risk to Inflation from Inflation Expectations](#)," *The Bank of England Quarterly Bulletin* **Q2**: 148–162.
2. Ball, L. and S. Mazumder (2015), "[A Phillips Curve with Anchored Expectations and Short-term Unemployment](#)," Working Paper 17/39, International Monetary Fund.
3. Beechey M.J., B.K. Johansen, and A.T. Levin (2011), "[Are Long-run Inflation Expectations Anchored more Firmly in the Euro Area than in the United States](#)," *American Economic Journal: Macroeconomics* **3**(2): 104–129.
4. Bentancor, A. and P. Pincheira (2010), "[Predicción de Errores de Proyección de Inflación en Chile](#)," *El Trimestre Económico* **77**(305): 129–154.
5. Bernanke, B.S., T. Laubach, F.S. Mishkin, and A. Posen (1999), *[Inflation Targeting: Lessons from International Experience](#)*, Princeton University Press, Princeton, USA.
6. Bomfim, A. and G. Rudebusch (2000), "[Opportunistic and Deliberate Disinflation under Imperfect Credibility](#)," *Journal of Money, Credit, and Banking* **32**: 707–721.
7. Christiano, L.J. and C. Gust (2000), "[The Expectations Trap Hypothesis](#)," *Economic Perspectives* **Second Quarter**: 21–39.
8. Ciccarelli, M. and C. Osbat (2017), "[Low Inflation in the Euro Area: Causes and Consequences](#)," Occasional Paper 181, European Central Bank.

9. Clarida, R., J. Galí, and M. Gertler (1999), "[The Science of Monetary Policy: A New Keynesian Perspective](#)," *Journal of Economic Literature* **37**(4): 1661–1707.
10. Clark, T.E. and T. Nakata (2008), "[Has the Behavior of Inflation and Long-Term Inflation Term Expectations Changed?](#)" *Federal Reserve of Kansas City Economic Review* **First Quarter**: 17–50.
11. Cogley, T. and T.J. Sargent (2005), "[Drifts and Volatilities: Monetary Policies and Outcomes in the Post WWII US](#)," *Review of Economic Dynamics* **8**(2): 262–302.
12. Cunningham, R., B. Desroches, and E. Santor (2010), "[Inflation Expectations and the Conduct of Monetary Policy: A Review of Recent Evidence and Experience](#)," *Bank of Canada Review* **Spring**: 13–25.
13. Davis, J.S. (2014), "[Inflation Targeting and the Anchoring of Inflation Expectations: Cross-country Evidence from Consensus Forecasts](#)," Working Paper 174, Federal Reserve Bank of Dallas.
14. De Pooter, M., P. Robitaille, I. Walker, and M. Zdinak (2014), "[Are Long-Term Inflation Expectations Well Anchored in Brazil, Chile, and Mexico?](#)" *International Journal of Central Banking* **14**(2): 337–400.
15. Demertzis, M., M. Marcellino, and N. Viegi (2008), "[A Credibility Measure: Tracking US Monetary Developments](#)," CEPR Working Paper 7036.
16. Demertzis, M., M. Marcellino, and N. Viegi (2009), "[Anchors for Inflation Expectations](#)," Working Paper 229, De Nederlandsche Bank.
17. Dräger, L. and M.J. Lamla (2013), "[Anchoring of Consumers' Inflation Expectations: Evidence from Microdata](#)," Working Paper 13-339, KOF Swiss Economic Institute.
18. Draghi, M. (2016), *How Central Banks Meet the Challenges of Low Inflation*, Marjolin Lecture delivered at the SUERF Conference organised by the Deutsche Bundesbank, Frankfurt, 4 February 2016.
19. Ehrmann, M. (2015), "[Targeting Inflation from Below—How Do Inflation Expectations Behave?](#)" *International Journal of Central Banking* **11**(4): 213–249.
20. Eijffinger, S.C.W. and P.M. Geraats (2006), "[How Transparent are Central Banks?](#)" *European Journal of Political Economy* **22**(1): 1–21.
21. El-Shagi, M. and A. Jung (2015), "[Have Minutes Helped Markets to Predict the MPC's Monetary Policy Decisions?](#)" *European Journal of Political Economy* **39**: 222–234.
22. Fatás, A., I. Mihov, and A.K. Rose (2007), "[Quantitative Goals for Monetary Policy](#)," *Journal of Money, Credit, and Banking* **39**(5): 1163–1176.
23. Forsells, M. and G. Kenny (2010), *Further Evidence on the Properties of Consumers' Inflation Expectations in the Euro Area*, in P. Sinclair (Ed.), *Inflation Expectations*, Routledge, New York, US.

24. Geraats, P.M. (2010), *ECB Credibility and Transparency*, in M. Buti, S. Deroose, V. Gaspar, and J.N. Martins (Eds.), *The Euro - The First Decade*, Cambridge University Press, UK.
25. Gürkaynak, R.S., A.T. Levin, A.N. Marder, and E.T. Swanson (2007), "[Inflation Targeting and the Anchoring of Inflation Expectations in the Western Hemisphere](#)," *Federal Reserve Board of San Francisco Economic Review* **2007**: 25–47.
26. Jochmann, M., G. Koop, and S. Potter (2010), "[Modelling the Dynamics of Inflation Compensation](#)," *Journal of Empirical Finance* **17**(1): 157–167.
27. King, M. (2005), "[Monetary Policy: Practice Ahead of Theory](#)," speech delivered at the Mais Lecture, Cass Business School, City University of London, UK. 15 May, 2005.
28. Leigh, D. (2008), "[Estimating the Federal Reserve's Implicit Inflation Target: A State Space Approach](#)," *Journal of Economic Dynamics and Control* **32**: 2013–2030.
29. Levin, A.T., F.M. Natalucci, and J.M. Piger (2004), "[The Macroeconomic Effects of Inflation Targeting](#)," *Federal Reserve Bank of St. Louis Review* **86**(4): 51–80.
30. Łyziak, T. and M. Paloviita (2017), "[Anchoring of Inflation Expectations in the Euro Area: Recent Evidence based on Survey Data](#)," *European Journal of Political Economy* **46**: 52–73.
31. Marcel, M., C.A. Medel, and J. Mena (2017), "[Determinantes de la Inflación de Servicios en Chile](#)," Working Paper 803, Central Bank of Chile.
32. Medel, C.A. (2015), "[Inflation Dynamics and the Hybrid New Keynesian Phillips Curve: The Case of Chile](#)," *Monetaria* **III**(1): 25–69.
33. Medel, C.A. (2017), "[Forecasting Chilean Inflation with the Hybrid New Keynesian Phillips Curve: Globalisation, Combination, and Accuracy](#)," *Economía Chilena* **20**(3): 4–50.
34. Mishkin, F.S. (2007), "[Will Monetary Policy Become More of a Science?](#)" Working Paper 13566, National Bureau of Economic Research.
35. Mishkin, F.S. and K. Schmidt-Hebbel (2002), [One Decade of Inflation Targeting in the World: What Do We Know and What Do We Need to Know?](#), in N. Loayza and R. Soto (Eds.), *Inflation Targeting: Design, Performance, Challenges*, Central Bank of Chile.
36. Mishkin, F.S. and K. Schmidt-Hebbel (2007), [Does Inflation Targeting Make a Difference?](#), in F.S. Mishkin and K. Schmidt-Hebbel (Eds.), *Monetary Policy Under Inflation Targeting*, Central Bank of Chile.
37. Nautz, D. and T. Strohsal (2015), "[Are US Inflation Expectations Re-anchored?](#)" *Economics Letters* **127**: 6–9.
38. Neuenkirch, M. (2012), "[Managing Financial Market Expectations: The Role of Central Bank Transparency and Central Bank Communication](#)," *European Journal of Political Economy* **28**(1): 1–13.

39. Newey, W.K. and K.D. West (1987), "A Simple, Positive Semi-definite, Heteroskedasticity and Autocorrelation Consistent Covariance Matrix," *Econometrica* **55**(3): 703–708.
40. Newey, W.K. and K.D. West (1994), "Automatic Lag Selection in Covariance Matrix Estimation," *Review of Economic Studies* **61**: 631–653.
41. Öller, L.-E. and B. Barot (2000), "The Accuracy of European Growth and Inflation Forecasts," *International Journal of Forecasting* **16**(3): 293–315.
42. Paloviita, M. (2008), "Comparing Alternative Phillips Curve Specifications: European Results with Survey-based Expectations," *Applied Economics* **40**(17): 2259–2270.
43. Pedersen, M. (2010), "*Una Nota Introductoria a la Encuesta de Expectativas Económicas*," Studies in Economic Statistics 82, Central Bank of Chile.
44. Pedersen, M. (2015), "What Affects the Predictions of Private Forecasters? The Role of Central Bank Forecasts in Chile," *International Journal of Forecasting* **31**(4): 1043–1055.
45. Pierdzioch, C. and J.-C. Rülke (2013), "Do Inflation Targets Anchor Inflation Expectations?" *Economic Modelling* **35**: 214–223.
46. Pinchera, P. and R. Álvarez (2009), "Evaluation of Short Run Inflation Forecasts and Forecasters in Chile," *Money Affairs* **XXII**(2): 159–180.
47. Rusticelli, E., D. Turner, and M.C. Cavalleri (2015), "Incorporating Anchored Inflation Expectations in the Phillips Curve and in the Derivation of OECD Measures of the Unemployment Gap," *OECD Journal: Economic Studies* **2015**(1): 299–331.
48. Stock, J.H. and M.W. Watson (1996), "Evidence on Structural Instability in Macroeconomic Time Series Relations," *Journal of Business and Economic Statistics* **14**(1): 11–30.
49. Van der Cruijssen, C. and M. Demertzis (2007), "The Impact of Central Bank Transparency on Inflation Expectations," *European Journal of Political Economy* **23**(1): 51–66.
50. Van der Cruijssen, C. and M. Demertzis (2011), "How Anchored are Inflation Expectations in EMU Countries?" *Economic Modelling* **28**: 281–298.
51. Woodford, M. (2003), *Interest and Prices*, Princeton University Press, Princeton, USA.

<p align="center">Documentos de Trabajo Banco Central de Chile</p>	<p align="center">Working Papers Central Bank of Chile</p>
<p align="center">NÚMEROS ANTERIORES</p>	<p align="center">PAST ISSUES</p>
<p>La serie de Documentos de Trabajo en versión PDF puede obtenerse gratis en la dirección electrónica: www.bcentral.cl/esp/estpub/estudios/dtbc.</p>	<p>Working Papers in PDF format can be downloaded free of charge from: www.bcentral.cl/eng/stdpub/studies/workingpaper.</p>
<p>Existe la posibilidad de solicitar una copia impresa con un costo de Ch\$500 si es dentro de Chile y US\$12 si es fuera de Chile. Las solicitudes se pueden hacer por fax: +56 2 26702231 o a través del correo electrónico: bcch@bcentral.cl.</p>	<p>Printed versions can be ordered individually for US\$12 per copy (for order inside Chile the charge is Ch\$500.) Orders can be placed by fax: +56 2 26702231 or by email: bcch@bcentral.cl.</p>

DTBC – 824

Can Economic Perception Surveys Improve Macroeconomic Forecasting in Chile?

Nicolas Chanut, Mario Marcel y Carlos Medel

DTBC – 823

Characterization of the Chilean Financial Cycle, Early Warning Indicators and Implications for Macro-Prudential Policies

Juan Francisco Martínez y Daniel Oda

DTBC – 822

Taxonomy of Chilean Financial Fragility Periods from 1975

Juan Francisco Martínez, José Miguel Matus y Daniel Oda

DTBC – 821

Pension Funds and the Yield Curve: the role of Preference for Maturity

Rodrigo Alfaro y Mauricio Calani

DTBC – 820

Credit Guarantees and New Bank Relationships

William Mullins y Patricio Toro

DTBC – 819

Asymmetric monetary policy responses and the effects of a rise in the inflation target

Benjamín García

DTBC – 818

Medida de Aversión al Riesgo Mediante Volatilidades Implícitas y Realizadas
Nicolás Álvarez, Antonio Fernandois y Andrés Sagner

DTBC – 817

Monetary Policy Effects on the Chilean Stock Market: An Automated Content Approach
Mario González y Raúl Tadle

DTBC – 816

Institutional Quality and Sovereign Flows
David Moreno

DTBC – 815

Desarrollo del Crowdfunding en Chile
Iván Abarca

DTBC – 814

Expectativas Financieras y Tasas Forward en Chile
Rodrigo Alfaro, Antonio Fernandois y Andrés Sagner

DTBC – 813

Identifying Complex Core-Periphery Structures in the Interbank Market
José Gabriel Carreño y Rodrigo Cifuentes

DTBC – 812

Labor Market Flows: Evidence for Chile Using Micro Data from Administrative Tax Records
Elías Albagli, Alejandra Chovar, Emiliano Luttini, Carlos Madeira, Alberto Naudon, Matías Tapia

DTBC – 811

An Overview of Inflation-Targeting Frameworks: Institutional Arrangements, Decision-making, & the Communication of Monetary Policy
Alberto Naudon y Andrés Pérez

DTBC – 810

How do manufacturing exports react to RER and foreign demand? The Chilean case
Jorge Fornero, Miguel Fuentes y Andrés Gatty

DTBC – 809

A Model of Labor Supply, Fixed Costs and Work Schedules
Gonzalo Castex y Evgenia Detcher



BANCO CENTRAL
DE CHILE

DOCUMENTOS DE TRABAJO • Agosto 2018