

HAS THE U.S. WAGE PHILLIPS CURVE FLATTENED? A SEMI-STRUCTURAL EXPLORATION

Jordi Galí

*CREI, Universitat Pompeu Fabra,
and Barcelona GSE*

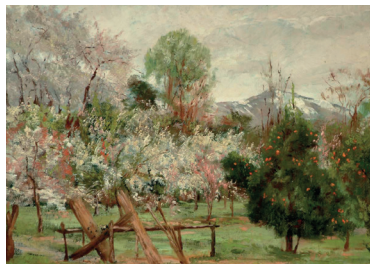
Luca Gambetti

*Universitat Autònoma de Barcelona,
Barcelona GSE, Collegio Carlo Alberto,
and Università di Torino*

Pages 149-172 | Chapter printout

Changing Inflation Dynamics, Evolving Monetary Policy

Gonzalo Castex, Jordi Galí,
and Diego Saravia
editors



27

Series on Central
Banking, Analysis,
and Economic Policies

Banco Central de Chile
Central Bank of Chile

The views and conclusions presented in the book are exclusively those of the authors and do not necessarily reflect the position of the Central Bank of Chile or its Board Members.

Copyright © Banco Central de Chile 2020

Agustinas 1180

Santiago, Chile

All rights reserved

Published in Santiago, Chile by the Central Bank of Chile

Manufactured in Chile

This book series is protected under Chilean Law 17336 on intellectual property. Hence, its contents may not be copied or distributed by any means without the express permission of the Central Bank of Chile. However, fragments may be reproduced, provided that a mention is made of the source, title, and author(s).

ISBN (print) 978-956-7421-67-1

ISBN (digital) 978-956-7421-68-8

Intellectual Property Registration 2020-A-2881

ISSN 0717-6686 (Series on Central Banking, Analysis, and Economic Policies)

