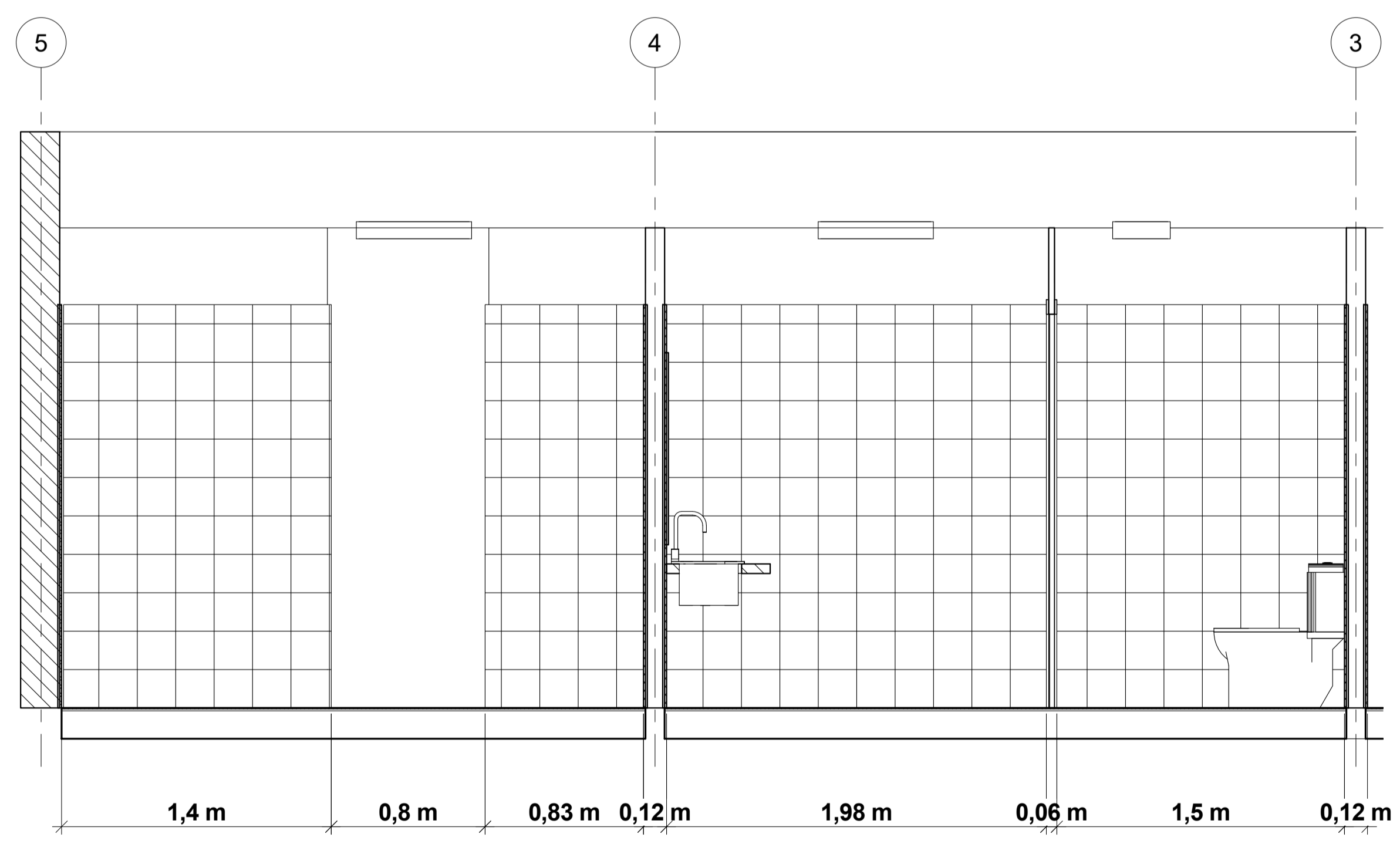
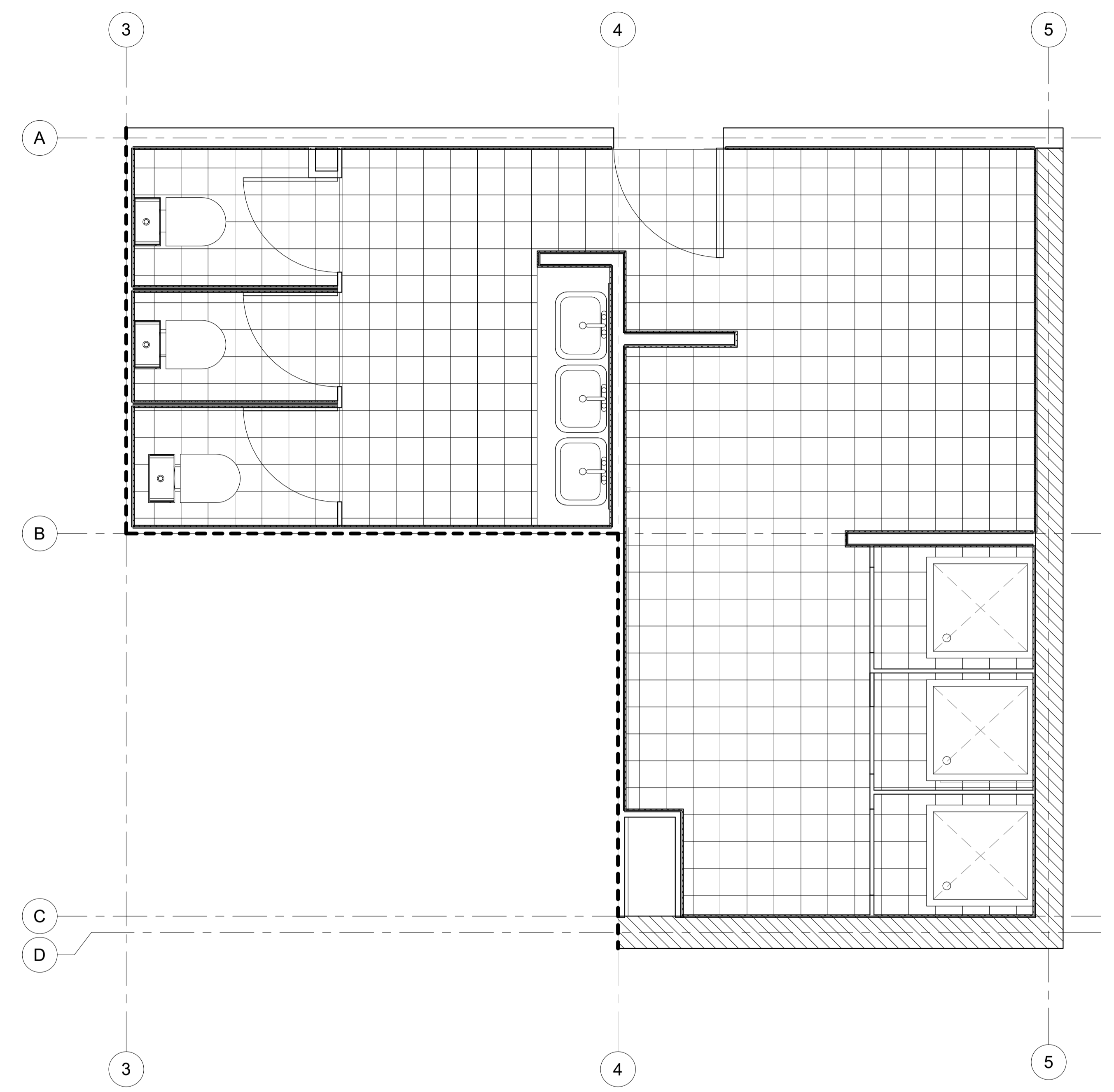


2 C' Longitudinal Camarín
Casino
1:20



3 C' Transversal Camarín
Casino
1:20



1 Planta Camarín Casino
1:20

| | | | | | |
|--|----------------------|----------------|-------------------|---|---------------|
| BANCO CENTRAL DE CHILE | | | |  NORTE  | |
| PROYECTO REMODELACIÓN BAÑOS AGUSTINAS PISO 4 | | | | PLANO DE UBICACION | |
| CONTENIDO PLANTA CAMARÍN CASINO | | | | | |
| DEPENDENCIA BAÑO CENTRAL DE CHILE | | | | | |
| DIRECCION AGUSTINAS 1180, SANTIAGO CENTRO | | | | | |
| PROPIETARIO BANCO CENTRAL DE CHILE RUT: 97.029.000-1 | APROBADO Approver | C. COSTO | FECHA 06/09/20 | Version | PLANO A003 |
| | | ESCALA 1:20 | | | |