



Statistical Synthesis of Chile

2006 - 2010



BANCO CENTRAL
DE CHILE

Statistical Synthesis of Chile

2006 - 2010



BANCO CENTRAL
DE CHILE

SENIOR AUTHORITIES OF THE CENTRAL BANK OF CHILE

(As of 31 December 2010)

CENTRAL BANK BOARD

JOSÉ DE GREGORIO REBECO
Governor

JOSÉ MANUEL MARFÁN LEWIS
Deputy Governor

SEBASTIÁN CLARO EDWARDS
Board Member

ENRIQUE MARSHALL RIVERA
Board Member

RODRIGO VERGARA MONTES
Board Member

ALEJANDRO ZURBUCHEN SILVA
General Manager

MIGUEL ÁNGEL NACRUR GAZALI
General Counsel

SILVIA QUINTARD FLEHAN
General Auditor

DIVISION DIRECTORS

KEVIN COWAN LOGAN
Financial Policy

BELTRÁN DE RAMÓN ACEVEDO
Financial Operations

LUIS GONZÁLEZ BANNURA
Management and Corporate Services

LUIS ÓSCAR HERRERA BARRIGA
Research

RICARDO VICUÑA POBLETE
Statistics

MANAGERS

LUIS ÁLVAREZ VALLEJOS
Communications

GABRIEL APARICI CARDOZO
Financial Regulation and Infrastructure

MATÍAS BERNIER BÓRQUEZ
Domestic Market

LUIS FELIPE CÉSPEDES CIFUENTES
Economic Research

RODRIGO CIFUENTES SANTANDER
Financial Research

CECILIA FELIÚ CARRIZO
Human Resources

MARIELA ITURRIAGA VALENZUELA
Financial Services

LEONARDO EUGENIO JADUE JADUE
Informatics

JUAN ESTEBAN LAVAL ZALDÍVAR
Corporate Legal Services

SERGIO LEHMANN BERESI
International Analysis

PABLO MATTAR OYARZÚN
Normative Legal Services

IVÁN MONTOYA LARA
Treasury

LUIS OPAZO ROCO
Financial Stability

ENRIQUE ORELLANA CIFUENTES
Monetary Policy Strategy and Communication

GLORIA PEÑA TAPIA
Statistic Information

ÁLVARO ROJAS OLMEDO
International Relations

FRANCISCO RUIZ ABURTO
Macroeconomic Statistics

CRISTIÁN SALINAS CERDA
International Investment

CLAUDIO SOTO GAMBOA
Macroeconomic Analysis

MARIO ULLOA LÓPEZ
Strategic and Risk Management

MARÍA INÉS URBINA DE LUIGGI
Logistical Services

CLAUDIA VARELA LERTORA
Institutional Affairs

JORGE ZÚÑIGA MAYORGA
Security

TABLE OF CONTENTS

GENERAL BACKGROUND

7

Location and area, boundaries, climate and natural resources

7

Temperature, rainfall and environmental pollution of main Chilean towns

8

POPULATION

10

SYSTEM OF GOVERNMENT AND POLITICAL AND ADMINISTRATIVE ORGANIZATION

12

ECONOMIC AND SOCIAL INDICATORS

14

Main indicators of domestic economy

14

National accounts

16

Public finance

19

Agriculture, fruitgrowing, forestry, livestock and fishing

20

Mining

25

Manufacturing

26

Construction

30

Energy

32

Transport

34

Communications

35

Tourism

35

Prices

36

Money and banking

40

Interest rates

41

Balance of payments

43

Balance of trade by product

44

Foreign debt

48

Direct foreign investment under DL 600

49

Employment and wages

49

Social indicators

52

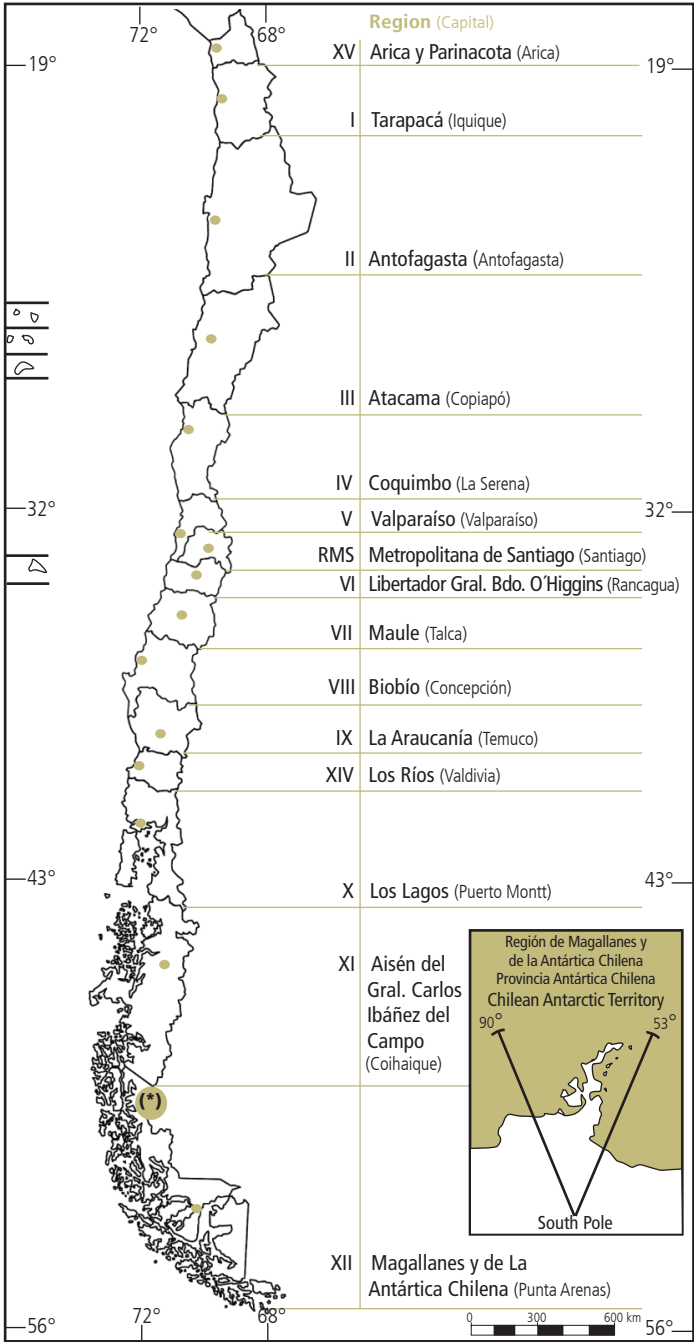
Selected welfare indicators

53

Sources

54

MAP OF CHILE BY REGIONS



(*) Agreement between Chile and Argentina to precisely trace the common boundary between Fitz Roy and Daudet mountains. (Buenos Aires, 16 December, 1998).

GENERAL BACKGROUND (A)

LOCATION AND AREA:

Chile is located in the southwest of South America stretching as far south in the Antarctica as to the South Pole itself and with its westernmost province, Easter Island, in the South Pacific Ocean.

On the American continent, Chile stretches from 17°30' S at the northern boundary to 56°32' S at the southernmost tip of South America.

The Chilean Antarctic Territory comprises the whole of the area located south of the 60° S, between meridians 53° and 90° W as far as the South Pole at 90° S.

The national territory comprises several islands in the Pacific Ocean, which add to the country's territorial waters. The nearest to the continent are the islands that form the Juan Fernández archipelago, and San Félix and San Ambrosio islands. The most distant from the mainland are Salas y Gómez and Easter Island or Rapa Nui.

The latter is located at 27° S and 109°30' W, opposite the port of Caldera and 3,760 kilometers away from the mainland.

From the Concordia line to the South Pole, the country is over 8,000 kilometers long. The area of South American, Antarctic and Oceanic Chile is 2,006,096 sq km, with 756,096 sq km corresponding to South American and insular Chile and 1,250,000 sq km to the Chilean Antarctic Territory.

SOUTH AMERICAN AND INSULAR CHILE	756,096 sq km
Cropland	16,560 sq km
Grazing land	129,300 sq km
Forest land	84,200 sq km
Non-productive land	526,036 sq km
CHILEAN ANTARCTIC TERRITORY	1,250,000 sq km
TOTAL	2,006,096 sq km

BOUNDARIES

Chile is bounded on the north by Peru, by a border line known as Línea de la Concordia; on the east by Bolivia and Argentina, mainly by a line that runs through the highest summits of the Andes; on the south by the South Pole, and on the west by the Pacific Ocean, including 200 nautical miles of territorial waters.

CLIMATE AND NATURAL RESOURCES :

The North:

Climate: Warm desert.
Natural resources: Nitrate, copper, iron, lithium and other minerals, valleys suited for agriculture, and sea foods.

The Center:

Climate: Mild and temperate, with rains in winter.
Natural resources: Agricultural lands especially suitable for fruitgrowing, wine-growing, grazing lands, forests, hydroelectric power (rivers), copper and sea foods.

The South:

Climate: Temperate and rainy.
Natural resources: Agricultural and grazing lands, forests, hydroelectric power (rivers) and sea foods.

The Far South:

Climate: Cold steppe.
Natural resources: Forests, petroleum, natural gas, coal, limestone, sheep, and sea foods.

TEMPERATURE, RAINFALL AND ENVIRONMENTAL POLLUTION
OF MAIN CHILEAN TOWNS: (A) (B) (C)
(temperature in centigrades and annual precipitation in mm)

Town (station)	2006	2007	2008	2009	2010
Arica (Chacalluta)					
Mean annual temperature	19.2	17.8	18.5	19.2	18.6
Mean annual precipitation	(1)	0.0	2.4	(1)	0.0
Iquique (Diego Aracena)					
Mean annual temperature	18.4	17.3	18.1	18.5	17.0
Mean annual precipitation	0.2	0.0	(1)	0.2	0.0
Antofagasta (Cerro Moreno)					
Mean annual temperature	16.7	15.6	16.2	16.4	16.1
Mean annual precipitation	7.7	0.2	0.0	2.1	1.4
La Serena (La Florida)					
Mean annual temperature	13.9	13.1	13.7	13.4	13.1
Mean annual precipitation	68.6	27.6	108.6	54.5	67.8
Valparaíso (Jardín Botánico)					
Mean annual temperature	14.4	13.0	13.9	14.2	13.1
Mean annual precipitation	615.8	217.9	580.0	367.8	274.3
Isla de Pascua (Mataverí)					
Mean annual temperature	20.8	20.3	20.3	20.9	20.4
Mean annual precipitation	1,420.9	1,659.9	1,041.8	1,686.6	797.4
Santiago (Quinta Normal)					
Mean annual temperature	15.3	13.9	15.1	15.2	14.3
Mean annual precipitation	335.6	168.4	350.8	276.8	259.5
Santiago (Pudahuel)					
Mean annual temperature	14.6	13.3	14.6	14.8	14.0
Mean annual precipitation	275.9	134.4	223.9	207.5	161.0
Archipiélago Juan Fernández (Robinson Crusoe)					
Mean annual temperature	15.4	14.5	15.8	15.9	14.5
Mean annual precipitation	1,081.8	1,014.5	1,034.2	1,065.6	896.1
Curicó (General Freire)					
Mean annual temperature	(2)	(2)	(2)	(2)	(2)
Mean annual precipitation	754.3	351.4	674.0	562.7	375.7
Chillán (Bernardo O'Higgins)					
Mean annual temperature	(2)	(2)	(2)	(2)	(2)
Mean annual precipitation	1,236.1	646.6	992.3	913.7	659.3
Concepción (Carriel Sur)					
Mean annual temperature	12.6	11.5	12.7	12.3	12.1
Mean annual precipitation	1,313.8	779.4	1,137.0	935.2	760.2

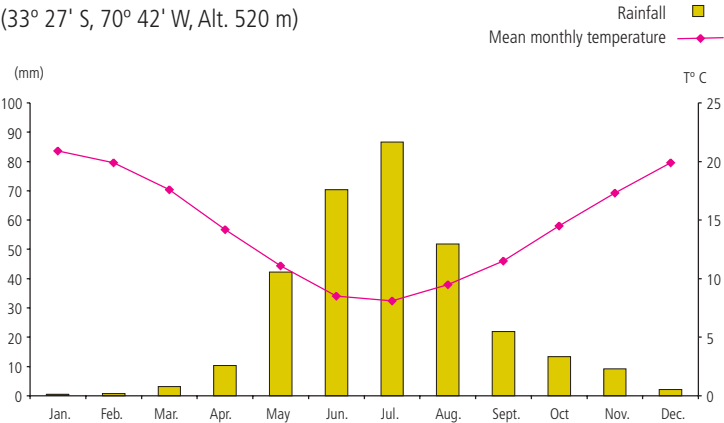
(1) Without rainfall.

(2) Without information.

	2006	2007	2008	2009	2010
Temuco (Maquehue)					
Mean annual temperature	11.3	10.3	11.9	11.1	10.6
Mean annual precipitation	1,422.0	988.8	1,050.4	1,219.5	860.6
Valdivia (Pichoy)					
Mean annual temperature	(2)	(2)	(2)	(2)	(2)
Mean annual precipitation	2,099.0	1,261.5	1,995.1	1,950.1	1,491.8
Osorno (Cañal Bajo)					
Mean annual temperature	(2)	(2)	(2)	(2)	(2)
Mean annual precipitation	1,637.6	885.4	1,028.1	1,345.6	1,041.3
Puerto Montt (El Tepual)					
Mean annual temperature	10.1	9.4	10.6	9.9	9.7
Mean annual precipitation	1,920.7	1,245.6	1,591.3	1,618.7	1,293.2
Coihaique (Teniente Vidal)					
Mean annual temperature	7.6	8.0	8.8	8.2	7.7
Mean annual precipitation	1,258.3	685.6	923.0	1,227.1	1,018.1
Balmaceda					
Mean annual temperature	(2)	(2)	6.9	6.6	5.9
Mean annual precipitation	579.9	317.5	444.4	578.9	566.8
Punta Arenas (Carlos Ibáñez del Campo)					
Mean annual temperature	6.5	6.2	6.5	6.2	6.1
Mean annual precipitation	464.7	427.2	366.2	366.1	306.6
Base Antártica Presidente Eduardo Frei M.					
Mean annual temperature	-1.6	-3.4	-1.5	-3.3	-2.2
Mean annual precipitation	626.8	478.3	464.6	698.8	450.4

(2) Without information.

Temperatures and Rainfall in Santiago
Quinta Normal Station
(33° 27' S, 70° 42' W, Alt. 520 m)



Source: National Meteorological Division.

	2006	2007	2008	2009	2010
Environmental pollution statistics in the Santiago Metropolitan Region (1) (annual averages of sampling stations)					
Particles in suspension					
MP 10 fraction (µg/cubic meter)	69	71	67	61	56
MP 2.5 fraction (µg/cubic meter)	31	32	31	27	26
Ozone (parts per billion)					
Average annual concentration	16	16	15	(n.a.)	(n.a.)
Percentil 99 (annual average)	72	69	65	(n.a.)	(n.a.)

POPULATION (A)

GENERAL BACKGROUND:

According to past censuses, in 1835, Chile had a population of 1,103,036; in 1895, 2,695,625; in 1907, 3,231,022; in 1940, 5,023,539; in 1960, 7,374,115; in 1970, 8,884,768; in 1982, 11,329,736; in 1992 13,348,401; and the latest 2002 population census registered 15,116,435 inhabitants which for 2010 was estimated at 17,094,270 inhabitants.

This steady growth of the population is mainly due to moderately high birth rates (until 1961, the birth rate was 34 in a thousand, on average) and to a decreasing mortality rate, from 25 to 12 deaths in a thousand between 1933 and 1961.

The higher proportion of elderly people is due to a fertility rate fall associated to a birth rate that has dropped to around 1.65% a year, in 2002, while overall mortality is 0.53%. This brings population growth to 1.12% a year.

Around 1961 the birth rate began to decrease to 14 births in a thousand in 2007, while mortality continued falling to each 5.6 deaths in a thousand in 2007. This produced a gradual decrease of natural growth, as well as on the rythm of the total population average growth.

In turn, these changes are due to modifications experienced by two components of the Chilean population, fertility and mortality –the other is migration– from high to low levels(2); this process, known as demographic transition, impacts the population pyramid, and since it began in 1961, today it presents an advanced phase of elderly population.

An elderly population is characterized by low birth and death rates. In terms of age it means a lower proportion of people aged under 15 years and a relative increase of people of 60 or more years. As a matter of fact (3), in Chile, in 1960, there were 19 individuals of 60 years or older in one hundred children, aged 15 or less. In 2010 this figure is estimated at 58.

Until 1930, the population was predominantly rural: in 1875, 65.1% and in 1920, 53.6%. The 1940 census reversed the situation and nowadays, according to the census of 2002, only 13.4% of the population is rural.

Today Chile has a population density of 8.4 inhabitants per square kilometer.

(1) Data on air pollution provided by the automatic network of the Santiago Metropolitan Service of Environmental Health (Sesma).

(2) In 1961 each woman at the end of her fertile period contributed with 5.4 children as an average in 2008 she contributes only with 1.9 child. A new born in 1960 had a life expectancy of 58.1 years whereas in 2008, he is expected to live 77.8 years.

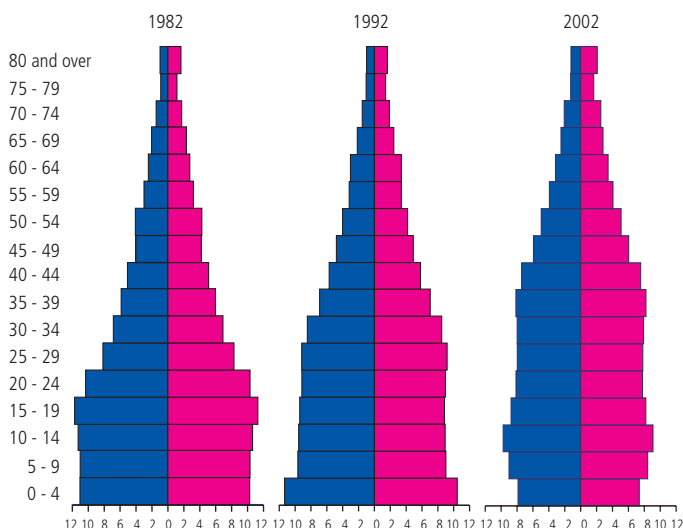
(3) The oldest adults index is a measure of older population process: Calculated as a ratio between the 60 year an older population and the amount of people aged 15 years or less, multiplied by one hundred, and it expresses the number of 60-year and older people for each hundred children (15 years or less)

(n.a.) Not available.

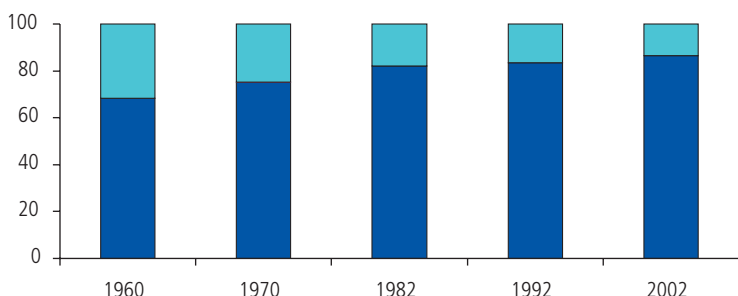
POPULATION: (A) (*)

	2006	2007	2008	2009	2010
Population (thousands)	16,432.7	16,598.1	16,763.5	16,928.9	17,094.3
Annual growth rate (1)	1.02	1.01	1.00	0.99	0.98
Male	8,134.3	8,216.1	8,297.8	8,379.6	8,461.3
Female	8,298.4	8,382.0	8,465.7	8,549.3	8,632.9
Urban (%)	86.9	86.9	86.9	86.9	87.0
Rural (%)	13.1	13.1	13.1	13.1	13.0

(1) Mean number of persons per one-hundred inhabitants.

Population by age and sex
(percent)Male ■
Female ■

Source: National Statistics Bureau (INE), Census of 1982, 1992 and 2002.

Urban and rural population by census
(percent)Rural ■
Urban ■

Source: National Statistics Bureau (INE).

(*) Estimated figures at 30 June of each year, on the basis of the 2002 census.

	2006	2007	2008	2009	2010
Population by region (1) (thousands) (A)	16,432.7	16,598.1	16,763.5	16,928.9	17,094.3
XV Region Arica de Parinacota	189.7	188.5	187.3	186.1	185.0
I Region of Tarapacá	286.1	293.2	300.3	307.4	314.5
II Region of Antofagasta	547.9	554.8	561.6	568.4	575.3
III Region of Atacama	272.4	274.4	276.5	278.5	280.5
IV Region of Coquimbo	677.3	687.7	698.0	708.4	718.7
V Region of Valparaíso	1,682.0	1,701.3	1,720.6	1,739.9	1,759.2
VI Region of Libertador Gral. Bernardo O'Higgins	849.1	857.7	866.2	874.8	883.4
VII Region of Maule	975.2	983.4	991.5	999.7	1,007.8
VIII Region of Biobío	1,982.6	1,996.1	2,009.5	2,023.0	2,036.4
IX Region of La Araucanía	937.3	945.5	953.8	962.1	970.4
XIV Region of Los Ríos	373.7	375.2	376.7	378.2	379.7
X Region of Los Lagos	794.5	805.0	815.4	825.8	836.3
XI Region Aisén of Gral. C. Ibáñez del Campo	100.4	101.5	102.6	103.7	104.8
XII Region of Magallanes y de La Antártica Chilena	156.5	157.0	157.6	158.1	158.7
RMS Stgo. Metropolitan Region	6,607.8	6,676.7	6,745.7	6,814.6	6,883.6
Life expectancy at birth (years) (2) (A)	78.47	77.83	78.19	78.29	78.47
Male	75.50	74.95	75.38	75.59	75.81
Female	81.36	80.66	80.94	81.10	81.23
Life expectancy at one year age (years) (3) (A)	78.09	77.48	77.81	77.90	78.06
Male	75.15	74.65	75.01	75.21	75.41
Female	80.95	80.25	80.54	80.69	80.81

SYSTEM OF GOVERNMENT AND POLITICAL AND ADMINISTRATIVE ORGANIZATION

According to the Political Constitution of 1980, Chile is a unitarian state. For interior administration and government, the country is divided into regions and these into provinces. For local administration, the provinces are divided into communes.

Regional government is the responsibility of the Intendent, who is the immediate representative of the President of the Republic and is answerable directly to him.

At the head of the regional administration is the Regional Government with full legal capacity and its own assets. It consists of the Intendent, its maximum authority, and the Regional Council which has normative, resolving and supervisory capacities.

Provincial government corresponds to the Governor, also answerable directly to the President of the Republic and subordinate to the Intendent. He administrates in representation of the Intendent and is assisted by a consultative Provincial Social and Economic Council of which he is the Chairman and he may also constitute a Technical Advisory Committee.

Local communal administration is carried out by the Municipality, an autonomous public body with full legal capacity and its own assets. It consists of the Mayor and his Council with normative, resolute and supervisory capacities. At the same time, each commune has a Communal Social and Economic Council, chaired by the Mayor, which has consultative duties. The Mayor is the chairman of the Council and, is elected by public vote. The councillors are proportionally elected by public vote.

Most of the Ministries and National Public Services are decentralized territorially by way of Ministerial Regional Secretariats and Regional or Provincial Directions respectively, the latter being subordinated to the Ministerial Regional Secretary and both subordinate to the Intendent.

Furthermore, in each region there is a Regional Cabinet to assist the Intendent integrated by Governors, Ministerial Regional Secretaries and by regional heads of state administration nominated by the Intendent.

(1) Estimated figures at 30 June of each year, on the basis of the 2002 census.

(2) Life expectancy at birth is the number of years a newborn infant is expected to live.

(3) Life expectancy at one year is the number of years a one-year old infant is expected to live.

THE REGIONS AND THEIR CAPITALS:

Decree Law 575 (10 July, 1974), divided the Chilean territory into thirteen regions. Later on, Law 20174 published on the *Official Gazette* of 5 April 2007 established Region XIV and Law 20175 published on the *Official Gazette* of 11 April 2007 established Region XV.

NAME	CAPITAL	Website
XV Region of Arica y Parinacota	Arica	www.gorearicayparinacota.cl
I Region of Tarapacá	Iquique	www.goretarapaca.cl
II Region of Antofagasta	Antofagasta	www.goreantofagasta.cl
III Region of Atacama	Copiapó	www.goreatacama.cl
IV Region of Coquimbo	La Serena	www.gorecoquimbo.cl
V Region of Valparaíso	Valparaíso	www.gorevalparaiso.cl
VI Region of Libertador General Bernardo O'Higgins	Rancagua	www.goreohiggins.cl
VII Region of Maule	Talca	www.gobiernoregionaldelmaule.cl
VIII Region of Biobío	Concepción	www.gorebiobio.cl
IX Region of La Araucanía	Temuco	www.gorearaucaania.cl
XIV Region of Los Ríos	Valdivia	www.goredelosrios.cl
X Region of Los Lagos	Puerto Montt	www.goreloslagos.cl
XI Region Aisén of Gral. Carlos Ibáñez del Campo	Coihaique	www.goreaysen.cl
XII Region of Magallanes y de La Antártica Chilena	Punta Arenas	www.goremagallanes.cl
RMS Santiago Metropolitan Region	Santiago	www.gobiernosantiago.cl

Regions with largest population:

Santiago Metropolitan Region	6,883,563	inhabitants
VIII Region of Biobío	2,036,443	inhabitants
V Region of Valparaíso	1,759,167	inhabitants

MINISTRIES	Website
Agricultura	www.minagri.cl
Bienes Nacionales	www.bienes.cl
Consejo Nacional de la Cultura y las Artes	www.consejodelacultura.cl
Defensa Nacional	www.defensa.cl
Economía, Fomento y Reconstrucción	www.economia.cl
Educación	www.mineduc.cl
Energía	www.minenergia.cl
Hacienda	www.hacienda.gov.cl
Interior y Seguridad Pública	www.interior.gov.cl
Justicia	www.minjusticia.cl
Medio Ambiente	www.mma.gov.cl
Minería	www.minmineria.cl
Obras Públicas	www.mop.cl
Planificación	www.mideplan.cl
Relaciones Exteriores	www.minrel.gov.cl
Salud	www.minsal.cl
Secretaría General de Gobierno	www.msg.gov.cl
Secretaría General de la Presidencia	www.segpres.cl
Servicio Nacional de la Mujer	www.sernam.gov.cl
Trabajo y Previsión Social	www.mintrab.cl
Transportes y Telecomunicaciones	www.mtt.cl
Vivienda y Urbanismo	www.minvu.cl

OTHER AGENCIES	Website
Banco Central de Chile (BCCh)	www.bcentral.cl
BancoEstado (BECh)	www.bancoestado.cl
Bolsa de Comercio de Santiago	www.bolsantiago.com
Comisión Chilena de Energía Nuclear	www.cchen.cl
Comisión Chilena del Cobre (Cochilco)	www.cochilco.cl
Comisión Nacional de Energía (CNE)	www.cne.cl
Comité de Inversiones Extranjeras (CIE)	www.foreigninvestment.cl
Consejo de Defensa del Estado (CDE)	www.cde.cl
Contraloría General de la República	www.contraloria.cl
Corporación de Fomento de la Producción (Corfo)	www.corfo.cl
Corporación Nacional del Cobre de Chile (Codelco-Chile)	www.codelcochile.com
Corporación Nacional Forestal (Conaf)	www.conaf.cl
Dirección de Presupuestos	www.dipres.cl
Dirección de Promoción de Exportaciones (Prochile)	www.prochile.cl
Dirección del Territorio Marítimo y Marina Mercante (Directemar)	www.directemar.cl
Dirección General de Aeronáutica Civil	www.dgac.cl
Dirección Nacional de Fronteras y Límites del Estado (Difrol)	www.difrol.cl
Empresa Nacional de Minería (Enami)	www.enami.cl
Instituto Antártico Chileno (Inach)	www.inach.cl
Instituto de Desarrollo Agropecuario (Indap)	www.indap.cl
Instituto de Fomento Pesquero (Ifop)	www.ifop.cl
Instituto Forestal (Infor)	www.infor.cl
Instituto Geográfico Militar (IGM)	www.igm.cl
Instituto Nacional de Estadísticas (INE)	www.ine.cl

INTENDENCE	ADDRESS	TELEPHONE	e-mail
XIV Region of Arica y Parinacota	Av. General Velásquez 1775, Arica	58-207312	lrocafull@interior.gov.cl
I Region of Tarapacá	Arturo Prat 1099, Iquique	57-373200	inttarapaca@interior.gov.cl
II Region of Antofagasta	Arturo Prat 348, piso 2, Antofagasta	55-357500	intantofagasta@interior.gov.cl
III Region of Atacama	Los Carrera 645, piso 2, Copiapó	52-212727	intatacama@interior.gov.cl
IV Region of Coquimbo	Arturo Prat 350, La Serena	51-332100	intcoquimbo@interior.gov.cl
V Region of Valparaíso	Melgarejo 669, piso 18, Valparaíso	32-2653202	intvalparaíso@interior.gov.cl
VI Region of Libertador General Bernardo O'Higgins	Plaza de Los Héroes s/n, Rancagua	72-205900	intlohiggins@interior.gov.cl
VII Region of Maule	Uno Oriente 1190, Talca	71-510215	intmaule@interior.gov.cl
VIII Region of Biobío	Aníbal Pinto 442, piso 2, Concepción	41-2443100	intbiobio@interior.gov.cl
IX Region of La Araucanía	Vicuña Mackenna 290, piso 3, Temuco	45-968208	intaraucaña@interior.gov.cl
XV Region of Los Ríos	O'Higgins N°543, Valdivia (Casa Prochelle)	63-283800	iflores@interior.gov.cl
X Region of Los Lagos	Décima Región 480, piso 3, Puerto Montt	65-280725	intloslagos@interior.gov.cl
XI Region Aisén of General Carlos Ibáñez del Campo	Plaza 485, Coihaique	67-215610	intgcibanez@interior.gov.cl
XII Region of Magallanes y de La Antártica Chilena	Carlos Bories 901, piso 4, Punta Arenas	61-203748	intmagallanes@interior.gov.cl
RMS Santiago Metropolitan Region	Moneda esq. Morandé, Santiago	02-6765800	intmetropolitana@interior.gov.cl

OTHER AGENCIES	website
Municipalidad de Santiago	www.ciudad.cl
Oficina de Estudios y Políticas Agrarias (Odepa)	www.odepa.gob.cl
Oficina Nacional de Emergencia (Onemi)	www.onemi.cl
Servicio Agrícola y Ganadero (SAG)	www.sag.gob.cl
Servicio de Impuestos Internos (SII)	www.sii.cl
Servicio de Registro Civil e Identificación	www.registrocivil.cl
Servicio de Vivienda y Urbanización (Serviu)	www.minvu.cl
Servicio Electoral	www.servel.cl
Servicio Nacional de Aduanas	www.aduana.cl
Servicio Nacional de Pesca (Sernapesca)	www.sernapesca.cl
Servicio Nacional de Turismo (Sernatur)	www.sernatur.cl
Superintendencia de Administradoras de Fondos de Pensiones	www.safp.cl
Superintendencia de Bancos e Instituciones Financieras (SBIF)	www.sbif.cl
Superintendencia de Seguridad Social	www.suseso.cl
Superintendencia de Valores y Seguros (SVS)	www.svs.cl
Tesorería General de la República	www.tesoreria.cl

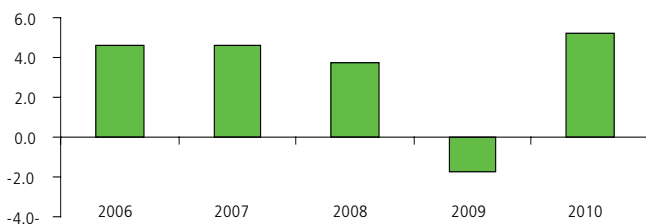
ECONOMIC AND SOCIAL INDICATORS

MAIN INDICATORS OF DOMESTIC ECONOMY	2006	2007	2008	2009	2010
Gross domestic product (GDP) growth rate (1)	4.6	4.6	3.7	-1.7	5.2
National unemployment rate (A)	(n.a.)	(n.a.)	(n.a.)	10.8	8.2
Consumer price index (CPI) Percentage change (to December of each year)	(n.a.)	(n.a.)	(n.a.)	(n.a.)	3.0
Balance of trade surplus / deficit (US\$ million)	22,780.0	23,941.0	8,529.0	14,117.0	15,855.0

(1) Provisional figure for 2009 and preliminary figure for 2010.

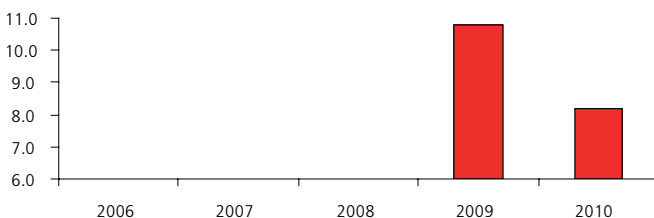
Main economic indicators

Annual GDP growth rate (*)
(percent)



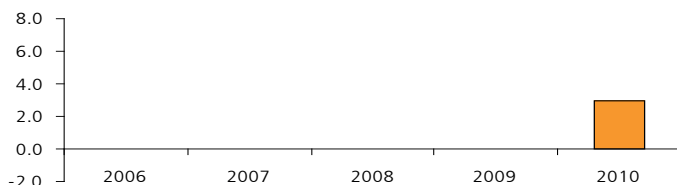
(*) Provisional figure for 2009 and preliminary figure for 2010.
Source: Central Bank of Chile.

Annual unemployment rate
(percent)



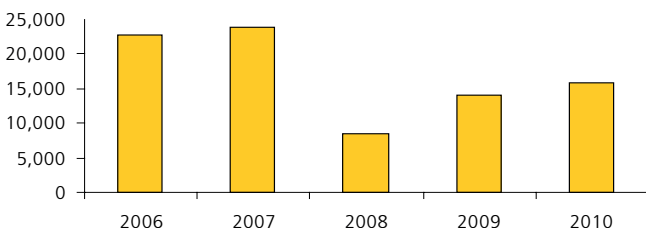
(*) The National Statistics Bureau publishes a new National Employment Survey with data available as from 2009.
Source: National Statistics Bureau (INE).

Consumer price index (CPI)
(percentage change)



(*) Due to the change of the index basis, The National Statistics Bureau provides information only since 2009.
Source: National Statistics Bureau (INE).

Balance of trade
(US\$ million)



Source: Central Bank of Chile.

NATIONAL ACCOUNTS (D)

Gross domestic product expenditure and investment rates

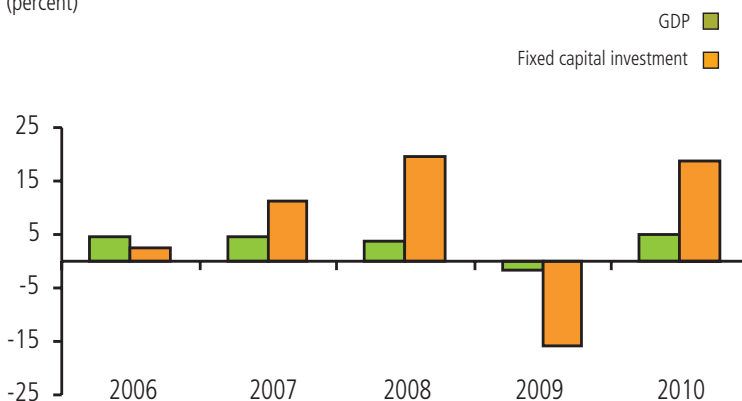
(millions of 2003 pesos)

	2006	2007	2008	2009(1)	2010(2)
Gross domestic product expenditure and investment rates	59,890,971	62,646,126	64,940,432	63,848,206	67,167,123
Domestic demand	62,129,419	66,821,074	71,982,190	67,738,027	78,878,005
Total consumption	46,928,098	50,219,985	52,176,464	53,159,906	58,104,707
Personal consumption	39,583,110	42,350,313	44,269,830	44,660,892	49,325,541
Durable goods	4,366,496	4,891,244	5,174,761	4,668,482	6,469,838
Non durable goods	17,517,407	18,511,248	19,113,788	19,460,578	21,018,822
Services	17,699,207	18,947,821	19,981,280	20,531,832	21,836,881
Government consumption	7,344,988	7,869,672	7,906,634	8,499,013	8,779,166
Change in inventory	827,226	613,446	719,416	-1,468,525	1,711,864
Gross fixed capital formation	14,374,095	15,987,643	19,086,311	16,046,647	19,061,435
Construction and other works	8,002,756	8,540,862	9,485,612	8,615,525	8,766,513
Machinery and equipment	6,371,340	7,446,781	9,600,698	7,431,121	10,294,922
Exports of goods and services	23,208,483	24,964,471	25,762,983	24,123,373	24,570,041
Exports of goods	18,664,775	19,973,407	20,251,363	19,110,796	19,043,167
Agriculture, livestock and forestry	1,776,848	1,850,893	1,990,808	2,017,842	2,023,665
Fishing	1,128,191	1,167,012	1,266,471	1,069,346	874,860
Mining	7,105,870	7,628,828	7,214,962	7,044,967	7,328,642
Copper	6,173,941	6,679,949	6,332,394	6,175,284	6,379,775
Other	931,929	948,879	882,569	869,683	948,867
Manufacturing	8,653,867	9,326,674	9,779,122	8,978,641	8,816,000
Exports of services	4,543,708	4,991,065	5,511,620	5,012,576	5,526,874
Import of goods and services	25,446,931	29,139,419	32,804,741	28,013,193	36,280,923
Import of goods	21,591,003	25,003,054	28,478,632	23,685,368	31,645,154
Agriculture, livestock and fishing	459,191	485,664	499,966	389,849	412,784
Mining	2,239,810	2,172,722	1,970,794	1,932,851	1,987,570
Manufacturing	18,892,002	22,344,668	26,007,872	21,362,667	29,244,800
Import of services	3,855,928	4,136,365	4,326,109	4,327,825	4,635,769
Fixed capital investment rate	24.0	25.5	29.4	25.1	28.4
Total investment rate	25.4	26.5	30.5	22.8	30.9

(1) Provisional figures.

(2) Preliminary figures.

Annual growth rate of gross domestic product (GDP) and of fixed capital investment (percent)



Source: Central Bank of Chile.

	2006	2007	2008	2009(1)	2010(2)
Percentage change over same period of the previous year (percent)	4.6	4.6	3.7	-1.7	5.2
Domestic demand	6.8	7.6	7.7	-5.9	16.4
Total consumption	7.0	7.0	3.9	1.9	9.3
Households consumption and IPSFL (5)	7.1	7.0	4.5	0.9	10.4
Durable goods	21.7	12.0	5.8	-9.8	38.6
Non durable goods	6.9	5.7	3.3	1.8	8.0
Services	4.2	7.1	5.5	2.8	6.4
Government consumption	6.4	7.1	0.5	7.5	3.3
Gross fixed capital formation	2.3	11.2	19.4	-15.9	18.8
Construction and other works	3.0	6.7	11.1	-9.2	1.8
Machinery and equipment	1.5	16.9	28.9	-22.6	38.5
Exports of goods and services	5.1	7.6	3.2	-6.4	1.9
Exports of goods	4.1	7.0	1.4	-5.6	-0.4
Agriculture, livestock and forestry	7.4	4.2	7.6	1.4	0.3
Fishing	1.3	3.4	8.5	-15.6	-18.2
Mining	-1.6	7.4	-5.4	-2.4	4.0
Copper	-2.6	8.2	-5.2	-2.5	3.3
Other	5.4	1.8	-7.0	-1.5	9.1
Manufacturing	9.0	7.8	4.9	-8.2	-1.8
Exports of services	9.4	9.8	10.4	-9.1	10.3
Import of goods and services	10.6	14.5	12.6	-14.6	29.5
Import of goods	11.6	15.8	13.9	-16.8	33.6
Agriculture, livestock and fishing	40.7	5.8	2.9	-22.0	5.9
Mining	4.6	-3.0	-9.3	-1.9	2.8
Manufacturing	12.0	18.3	16.4	-17.9	36.9
Import of services	5.2	7.3	4.6	0.0	7.1
Gross domestic product by economic activity (millions of 2003 pesos)	59,890,971	62,646,126	64,940,432	63,848,206	67,167,123
Agriculture, livestock and forestry	2,323,865	2,339,644	2,407,960	2,380,618	2,403,532
Fishing	727,576	740,495	796,721	738,276	637,094
Mining	4,436,556	4,583,482	4,325,019	4,268,225	4,320,345
Copper	3,633,949	3,765,598	3,531,496	3,526,859	3,586,681
Other	802,607	817,884	793,522	741,366	733,663
Manufacturing	9,896,182	10,196,414	10,338,236	9,677,021	9,581,875
Food, beverages and tobacco products	2,923,209	2,991,021	3,085,389	3,047,513	3,120,979
Textiles, clothing and leather	488,539	461,633	422,755	388,016	404,944
Wood and furniture	667,451	625,745	603,065	484,890	508,527
Paper and printing	1,037,992	1,229,837	1,286,636	1,274,866	1,135,534
Chemicals, oil, rubber and plastic	2,785,046	2,748,284	2,761,699	2,618,391	2,524,049
Non-metallic minerals and basic metal manufacturing	829,408	872,969	846,394	702,546	670,818
Metal products, machinery and equipment and other n.c.p.	1,164,537	1,266,924	1,332,299	1,160,799	1,217,024
Electricity, gas and water	1,664,078	1,184,141	1,162,728	1,331,605	1,513,532
Construction	4,173,722	4,365,546	4,808,536	4,429,734	4,587,701
Trade, hotels and catering	6,161,216	6,540,317	6,862,863	6,647,578	7,532,166
Transport	4,240,162	4,549,580	4,727,507	4,605,237	4,998,594
Communications	1,441,491	1,627,569	1,847,243	2,053,749	2,268,491
Financial and business services (3)	9,352,007	10,237,715	10,557,240	10,379,138	11,165,689
Housing real estate activities	3,258,422	3,378,073	3,496,125	3,612,078	3,620,243
Personal services (4)	6,549,766	6,856,501	7,138,790	7,356,980	7,533,597
Public administration	2,427,451	2,514,723	2,584,294	2,691,735	2,770,272
Subtotal	56,652,494	59,114,199	61,053,261	60,171,974	62,933,130
Less: Bank charges	2,361,718	2,736,273	2,851,357	2,889,645	3,164,263
GDP at factor cost	54,290,776	56,377,926	58,201,905	57,282,329	59,768,867
Plus: Net VAT collected	4,714,226	5,098,769	5,422,060	5,424,321	5,981,109
Plus: Import duties	885,969	1,169,431	1,316,467	1,141,557	1,417,148

(1) Provisional figures.

(2) Preliminary figures.

(3) Including financial services, insurance, rental of premises and services provided to firms.

(4) Including education, health care and other services.

(5) Households consumption and IPSFL.

n.c.p. : Not included in other entries.

	2006	2007	2008	2009(1)	2010(2)
Annual growth rate of gross domestic product by economic activity (percent)	4.6	4.6	3.7	-1.7	5.2
Agriculture, livestock and forestry	6.6	0.7	2.9	-1.1	1.0
Fishing	-3.5	1.8	7.6	-7.3	-13.7
Mining	0.7	3.3	-5.6	-1.3	1.2
Copper	0.3	3.6	-6.2	-0.1	1.7
Other	2.6	1.9	-3.0	-6.6	-1.0
Manufacturing	3.9	3.0	1.4	-6.4	-1.0
Food, beverages and tobacco products	3.5	2.3	3.2	-1.2	2.4
Textiles, clothing and leather	5.9	-5.5	-8.4	-8.2	4.4
Wood and furniture	2.4	-6.2	-3.6	-19.6	4.9
Paper and printing	5.3	18.5	4.6	-0.9	-10.9
Chemicals, oil, rubber and plastic	5.6	-1.3	0.5	-5.2	-3.6
Non-metallic minerals and basic metal manufacturing	2.6	5.3	-3.0	-17.0	-4.5
Metal products, machinery and equipment and other n.c.p.	1.2	8.8	5.2	-12.9	4.8
Electricity, gas and water	7.6	-28.8	-1.8	14.5	13.7
Construction	4.0	4.6	10.1	-7.9	3.6
Trade, hotels and catering	6.9	6.2	4.9	-3.1	13.3
Transport	7.5	7.3	3.9	-2.6	8.5
Communications	5.4	12.9	13.5	11.2	10.5
Financial and business services (3)	4.5	9.5	3.1	-1.7	7.6
Home ownership	3.2	3.7	3.5	3.3	0.2
Personal services (4)	3.7	4.7	4.1	3.1	2.4
Public administration	3.3	3.6	2.8	4.2	2.9
Subtotal	4.4	4.3	3.3	-1.4	4.6
Less: Bank charges	6.1	15.9	4.2	1.3	9.5
GDP at factor cost	4.3	3.8	3.2	-1.6	4.3
Plus: Net VAT collected	6.6	8.2	6.3	0.0	10.3
Plus: Import duties	11.3	32.0	12.6	-13.3	24.1
Annual disposable gross national income and gross domestic expenditure, at constant prices (millions of 2003 pesos)					
GDP at market prices	59,890,971	62,646,126	64,940,432	63,848,206	67,167,123
Plus received factor income from the rest of the world	1,806,111	3,246,444	2,749,701	3,014,025	3,304,647
Plus paid factor income to the rest of the world	10,990,127	12,106,457	8,591,213	8,284,868	9,745,459
Gross national product	50,706,955	53,786,113	59,098,920	58,577,364	60,726,312
Plus received current transfers from abroad	2,009,666	1,824,091	1,662,617	1,146,705	2,306,250
Plus paid current transfers to the abroad	287,390	318,595	382,918	408,240	428,694
Disposable gross national income	52,429,231	55,291,609	60,378,618	59,315,829	62,603,868
Plus effect of terms of trade	9,853,911	11,579,956	8,961,115	8,681,788	16,091,661
Disposable real gross national income	62,283,142	66,871,565	69,339,733	67,997,617	78,695,529
Gross domestic expenditure	62,129,419	66,821,074	71,982,190	67,738,027	78,878,005
Annual main macroeconomic aggregates, at current prices (millions of pesos)					
GDP at market prices	77,830,577	85,849,774	89,205,487	90,219,527	103,806,380
Plus received factor income from the rest of the world	1,925,730	3,593,450	3,289,979	3,701,303	4,040,343
Plus paid factor income to the rest of the world	11,689,807	13,350,240	10,176,491	10,175,656	11,903,450
Gross national product	68,066,500	76,092,984	82,318,975	83,745,175	95,943,274
Plus received current transfers from abroad	2,141,438	2,017,956	1,982,247	1,409,288	2,814,769
Plus paid current transfers to the abroad	306,247	352,629	458,807	501,529	523,514
Disposable gross national income	69,901,690	77,758,312	83,842,416	84,652,933	98,234,529
Less total consumption	50,502,355	56,241,883	63,463,159	66,196,416	73,065,948
Gross national savings	19,399,336	21,516,429	20,379,257	18,456,517	25,168,581
Plus external savings (national current account surplus)	-3,789,636	-3,930,351	2,134,002	-1,430,247	-1,888,430
Gross capital formation	15,609,700	17,586,078	22,513,259	17,026,271	23,280,151
Gross fixed capital formation	14,805,188	16,983,393	21,946,101	19,963,825	21,741,469

(1) Provisional figures.

(2) Preliminary figures.

(3) Including financial services, insurance, rental of premises and services provided to firms.

(4) Including education and health care services and other services.

n.c.p.: Not included in other entries.

	2006	2007	2008	2009(1)	2010(2)
Main annual macroeconomic aggregates and participation in the gross domestic product, at current prices (percentage of GDP)					
GDP at market prices	100.0	100.0	100.0	100.0	100.0
Plus received factor income from the rest of the world	2.5	4.2	3.7	4.1	3.9
Plus paid factor income to the rest of the world	15.0	15.6	11.4	11.3	11.5
Gross national product	87.5	88.6	92.3	92.8	92.4
Plus received current transfers from abroad	2.8	2.4	2.2	1.6	2.7
Plus paid current transfers to the abroad	0.4	0.4	0.5	0.6	0.5
Disposable gross national income	89.8	90.6	94.0	93.8	94.6
Less total consumption	64.9	65.5	71.1	73.4	70.4
Gross national savings	24.9	25.1	22.8	20.5	24.2
Plus external savings (national current account surplus)	-4.9	-4.6	2.4	-1.6	-1.8
Gross capital formation	20.1	20.5	25.2	18.9	22.4
Gross fixed capital formation	19.0	19.8	24.6	21.0	20.9
PUBLIC FINANCE (E)					
Total Central Government operating results (3) (domestic currency plus foreign currency) (millions of pesos)					
Operations affecting net equity					
Income	20,050,577	23,097,357	22,710,063	18,316,542	23,880,733
Net tax	13,220,515	16,165,759	16,473,295	13,346,556	17,577,714
Gross copper	4,431,123	4,141,791	3,198,958	1,593,047	3,043,079
Pension funds	1,050,396	1,148,647	1,289,225	1,371,750	1,493,987
Current transfers (4)	92,689	44,700	64,662	68,124	73,163
Rental of property (5)	363,202	650,747	765,093	656,344	472,618
Operational income	440,315	465,508	528,119	539,017	553,428
Other income	452,337	480,205	390,711	741,704	666,745
Expenditure	11,736,413	13,288,999	15,505,732	18,126,218	19,985,814
Personnel	2,760,449	3,107,938	3,544,891	4,210,413	4,659,700
Goods and services for consumption and production	1,397,872	1,665,347	1,699,922	2,058,175	2,326,560
Interest of debt	539,103	521,302	439,691	475,408	537,130
Subsidies and grants (4)	3,680,890	4,387,315	5,707,294	6,766,764	7,450,920
Pension payments (6)	3,346,885	3,590,192	4,084,099	4,591,371	4,975,541
Other	11,214	16,905	29,835	24,087	35,963
Gross operational results	8,314,164	9,808,358	7,204,331	190,324	3,894,918
Nonfinancial assets transactions					
Nonfinancial assets net acquisition	2,330,764	2,760,623	3,367,141	4,232,874	4,347,931
Physical assets sale	18,591	13,007	24,151	52,336	27,808
Investment	1,374,706	1,789,261	2,015,922	2,476,937	2,345,483
Capital transfers	974,649	984,369	1,375,370	1,808,273	2,030,256
Total income (7)	20,069,168	23,110,364	22,734,214	18,368,878	23,908,541
Total expenditure (8)	14,085,768	16,062,629	18,897,024	22,411,428	24,361,553
Net loans/indebtedness balance	5,983,400	7,047,735	3,837,190	-4,042,550	-453,014
Net loans/indebtedness balance as percentage of GDP	7.7	8.2	4.3	-4.5	-0.4
Structural balance as percentage of GDP (9)	1.1	0.4	-0.6	-3.0	-2.0

(1) Provisional figures.

(2) Preliminary figures.

(3) The Central Government comprises those government units whose sphere of action extends to the whole national territory.

(4) It is the current-expenditure transfers' concept of the budgetary classifying criterion used by the National Budget Law.

(5) In traditional presentations it is part of operational income.

(6) Excluding payment of pension recognition bonds, classified within financial entries.

(7) Operating income from transactions affecting net equity plus sale of nonfinancial physical assets, classified as nonfinancial asset operations.

(8) Operating expenses from transactions affecting net equity plus investment and capital transfers, classified as nonfinancial asset operations.

(9) Corresponds to the balance of the Central Government if GDP growth were that of its trend level and if the copper price were that of the long-term level.

	2006	2007(2)	2008	2009	2010
AGRICULTURE (A)					
Main agricultural products					
Cropland (1) (thousands of hectares)	781.8	647.7	716.9	711.4	674.1
Cereals					
Wheat	314.7	229.0	270.6	280.6	264.3
Oats	90.2	81.7	97.9	101.1	75.9
Barley	29.1	17.1	20.6	18.5	16.9
Rice	28.0	21.6	21.0	23.7	24.5
Corn	123.6	125.7	134.6	128.2	122.5
Other	9.5	28.1	28.1	25.9	24.4
Legumes and potatoes					
Beans	25.7	11.2	12.0	16.7	13.5
Lentils	1.2	0.9	0.9	1.0	1.2
Peas	1.6	1.3	1.3	2.8	2.5
Chick-peas	4.0	3.0	3.1	1.9	1.9
Potatoes	63.2	54.7	56.0	45.1	50.8
Other	0.6	1.3	1.3	0.3	0.2
Industrial crops					
Sugar beet	27.7	19.5	14.9	12.9	16.3
Sunflower	2.7	3.0	3.6	4.4	3.1
Rapeseed	13.5	10.6	17.3	25.1	11.0
Lupine	28.5	19.6	15.3	10.3	29.9
Other	18.4	19.4	18.7	13.0	15.3
Output (thousands of metric quintals)					
Cereals					
Wheat	14,036.9	10,958.7	12,376.9	11,452.9	15,239.2
Oats	4,350.4	3,408.2	3,842.2	3,443.6	3,808.5
Barley	1,367.0	810.8	961.3	734.2	973.7
Rice	1,603.1	1,095.7	1,214.0	1,273.1	946.7
Corn	13,818.9	11,226.5	13,654.1	13,456.5	13,579.2
Legumes and potatoes					
Beans	502.6	189.1	204.2	284.0	234.2
Lentils	7.1	7.3	6.3	5.6	7.2
Peas	21.3	17.8	17.8	33.8	22.9
Chick-peas	32.4	26.7	26.2	19.2	29.9
Potatoes	13,913.8	8,342.2	9,657.7	9,245.6	10,813.5
Industrial crops					
Sugar beet	21,997.8	15,176.9	12,085.0	10,424.2	14,206.7
Sunflower	52.8	60.0	76.1	100.1	79.7
Rapeseed	471.5	409.1	665.9	785.0	439.3
Lupine	704.8	440.2	316.2	123.1	733.2

(1) Agricultural year "n" is understood to mean the period elapsed since sowing took place in year "n-1" until harvest takes place in year "n".

(2) Figures from the Seventh National Agricultural Census (*VII Censo Nacional Agropecuario*).

	2006	2007	2008	2009	2010
Yield (metric quintals per hectare)					
Cereals					
Wheat	44.6	47.9	45.7	40.8	57.7
Oats	48.2	41.7	39.2	34.1	50.2
Barley	47.0	47.4	46.6	39.7	57.8
Rice	57.3	50.8	57.9	53.8	38.6
Corn	111.8	89.3	101.4	105.0	110.8
Legumes and potatoes					
Beans	19.6	16.9	17.1	17.0	17.3
Lentils	6.2	8.4	6.7	5.9	5.9
Peas	13.7	14.1	14.1	12.3	9.2
Chick-peas	8.2	9.0	8.5	10.2	15.9
Potatoes	220.2	152.4	172.6	205.1	213.0
Industrial crops					
Sugar beet	795.0	777.7	813.8	810.0	873.5
Sunflower	19.9	20.1	21.1	23.0	26.1
Rapeseed	34.9	38.7	38.6	31.2	40.0
Lupine	24.7	22.4	20.7	12.0	24.5
Vineyards used for (U) (hectares)					
Wine	116,793	117,559	(n.a.)	(n.a.)	(n.a.)
Pisco (Spirit)	10,063	9,982	(n.a.)	(n.a.)	(n.a.)
Fresh consumption	54,989	55,119	(n.a.)	(n.a.)	(n.a.)

(n.a.) Not available.

FRUITGROWING (F)

Area planted with fruit trees (1)

(thousands of hectares)

	2006	2007	2008	2009	2010
Almond	5.8	5.8	6.2	6.9	7.6
Cranberry	3.8	5.7	6.0	6.8	7.9
Cherry	7.6	9.9	10.1	12.5	13.1
Plum	14.5	14.9	14.6	18.5	18.7
Peach	12.9	13.2	13.5	15.0	13.9
Kiwi	6.7	8.7	8.7	10.8	10.9
Lemon	7.2	7.2	7.9	7.7	7.2
Apple	35.2	35.0	35.0	35.1	35.0
Orange	8.2	8.2	8.9	7.5	7.4
Nectarine	6.8	6.8	6.6	6.0	5.4
Walnut	9.7	10.1	11.1	12.6	15.5
Olive	5.8	8.0	8.6	12.0	12.9
Avocado	26.7	26.8	33.8	33.5	34.1
Pear	6.9	6.6	6.4	6.6	6.2
Table grape vineyards	51.0	50.8	52.2	53.3	52.7

Fruit production (1)

(thousands of metric tons)

Almonds	15.0	17.0	(n.a.)	(n.a.)	(n.a.)
Cranberry	23.7	28.6	47.9	57.5	76.4
Cherries	37.9	43.0	70.4	41.1	60.4
Plums	244.0	250.0	(n.a.)	(n.a.)	(n.a.)
Peaches	240.0	250.0	(n.a.)	(n.a.)	(n.a.)
Kiwis	170.0	185.0	(n.a.)	(n.a.)	(n.a.)
Lemons	145.0	155.0	(n.a.)	(n.a.)	(n.a.)
Apples	1,471.9	1,507.8	1,504.1	1,330.6	1,624.2
Oranges	148.0	150.0	(n.a.)	(n.a.)	(n.a.)
Nectarines	105.0	120.0	(n.a.)	(n.a.)	(n.a.)
Walnuts	18.9	22.7	24.2	28.4	33.6
Olives	30.0	36.0	(n.a.)	(n.a.)	(n.a.)
Avocados	163.1	209.7	122.6	232.2	166.4
Pears	199.0	195.0	(n.a.)	(n.a.)	(n.a.)
Table grapes	1,288.4	1,238.2	1,335.1	1,378.0	1,251.1

Fruit yield (1)

(tons per hectare)

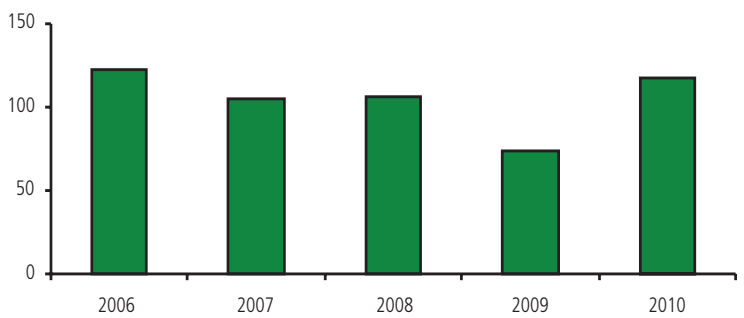
Almonds	2.4	2.6	(n.a.)	(n.a.)	(n.a.)
Cranberry	6.2	5.0	8.0	8.5	9.7
Cherries	5.0	4.3	7.0	3.3	4.6
Plums	16.8	16.8	(n.a.)	(n.a.)	(n.a.)
Peaches	18.6	18.9	(n.a.)	(n.a.)	(n.a.)
Kiwis	25.4	21.3	(n.a.)	(n.a.)	(n.a.)
Lemons	20.3	21.5	(n.a.)	(n.a.)	(n.a.)
Apples	41.8	43.1	43.0	37.9	46.4
Oranges	18.0	18.3	(n.a.)	(n.a.)	(n.a.)
Nectarines	15.4	17.6	(n.a.)	(n.a.)	(n.a.)
Walnuts	1.9	2.2	2.2	2.3	2.2
Olives	5.2	4.5	(n.a.)	(n.a.)	(n.a.)
Avocados	6.1	7.8	3.6	6.9	4.9
Pears	28.8	29.5	(n.a.)	(n.a.)	(n.a.)
Table grapes	25.3	24.4	25.6	25.9	23.7

(1) Provisional figures.

(n.a.) Not available.

	2006	2007	2008	2009	2010
FORESTRY					
Industrial output (G)					
Timber (thousands of cubic meters)	8,718.2	8,362.9	7,306.0	5,836.3	6,353.9
Mechanical pulp (thousands of metric tons)	512.5	493.9	495.0	502.7	458.3
Chemical pulp (thousands of metric tons)	2,970.3	4,181.5	4,485.5	4,489.8	3,643.9
Paper and cardboard (thousands of metric tons)	1,202.7	1,314.2	1,335.4	1,348.1	1,203.8
Veneer (thousands of tons)	25.1	28.0	33.1	32.1	22.2
Fiber and grain boards (thousands of metric tons)	895.4	881.6	956.1	742.6	902.3
Plywood boards (thousands of metric tons)	450.4	441.8	573.4	613.4	658.4
Annually reforested area (H) (hectares)	122,005	104,609	106,115	73,819	117,006

Annually reforested area
(thousands of hectares)



Source: Forestry Institute.

	2006	2007	2008	2009	2010
LIVESTOCK					
Carcass meat production by species (A) (metric tons)					
Cattle	237,553	241,677	240,257	209,853	210,745
Sheep	11,130	10,311	11,040	10,698	10,545
Hogs	467,866	498,706	522,422	513,741	498,489
Horses and mules	9,418	8,606	8,926	7,281	7,448
Goats	54	27	17	15	20
Poultry (A) (1) (thousands of metric tons)	614	581	612	604	594
Milk (A) (millions of liters)	2,400	2,450	2,550	2,350	2,530
Eggs (A) (millions of units)	2,482	2,742	2,801	(n.a.)	(n.a.)
FISHING (1)					
Total catch per species (I) (thousands of metric tons)	5,297	5,046	4,810	4,580	3,762
Fish	4,443	4,231	3,925	3,758	2,824
Crustaceans	22	22	24	25	25
Mollusks	457	397	408	301	499
Other species	36	36	40	40	33
Algae	339	360	412	456	381

(1) Including carcass meat of broilers, turkey, hens and others.

(n.a.) Not available.

	2006	2007	2008	2009	2010
MINING					
Mining production index (A) (2003 average = 100)					
General index	110.0	114.3	108.4	108.7	107.7
Metal minerals index	110.6	115.2	108.6	109.4	109.6
Copper	109.7	114.1	109.3	110.4	110.5
Non-metal minerals index	101.8	101.2	105.2	98.5	94.9
Nitrate	98.1	102.3	102.1	92.5	93.4
Iodine	105.9	99.3	99.5	111.7	101.4
Output					
Copper (thousands of fine metric tons) (J)	5,360.8	5,557.0	5,327.6	5,394.4	5,418.9
Molybdenum (thousands of fine metric tons) (J)	43.1	44.8	33.6	34.8	37.0
Gold (fine metric tons) (K)	42.1	41.5	39.2	40.8	39.5
Silver (fine metric tons) (K)	1,607.2	1,936.5	1,405.0	1,301.0	1,286.7
Iron (thousands of metric tons) (K)					
Ore	8,629.0	8,818.0	9,316.0	8,242.0	9,129.0
Pellets	4,085.1	4,194.7	4,314.1	4,450.4	4,036.8
Nitrate (thousands of metric tons) (K)	1,111.8	1,160.4	1,157.6	1,048.7	1,058.7
Iodine (thousands of metric tons) (K)	16.5	15.5	15.5	17.4	15.8
Coal (thousands of net metric tons) (K)	673.7	288.0	533.8	636.1	618.8
Crude oil (thousands of cubic meters)(K)	168.7	148.0	153.5	215.4	244.3
Natural gas (millions of cubic meters)(K)	2,198.9	2,015.0	1,828.2	1,889.3	1,792.9
Petroleum by-products (thousands of cubic meters) (L)					
Gasoline	3,445.0	3,150.9	3,265.2	3,348.8	2,778.3
Kerosene (1)	881.8	772.6	727.0	838.3	794.1
Diesel oil	4,070.4	3,822.3	4,379.4	4,094.1	3,456.2
Liquefied gas	1,371.1	1,311.1	1,219.9	1,361.1	1,237.7
Fuel oil	2,786.3	2,592.8	2,027.7	1,776.5	1,463.5

(1) Including domestic and aviation kerosene.

	2006	2007	2008	2009	2010 (1)
MANUFACTURING					
Manufacturing production (A) (2002 average=100)					
General Index (2)	124.6	129.7	130.0	121.3	121.9
Production, processing and preservation of meat, fish fruit, legumes, vegetables, oils and fats	129.7	130.3	131.2	114.2	106.5
Dairy products	113.3	117.4	123.8	115.3	123.7
Flour milling products starch and its by-products and dry feed	146.1	148.8	142.6	112.3	122.0
Other foodstuff	103.5	108.9	111.1	110.0	113.3
Beverages	127.9	139.7	145.8	149.9	162.8
Manufacturing of tobacco products	130.8	135.0	140.2	125.2	145.6
Weaving, knitting and finishing of textiles	70.4	69.1	62.1	51.0	46.9
Other textiles	387.4	456.8	356.5	302.2	338.6
Knitted and crocheted articles	88.3	83.3	74.9	55.4	59.9
Clothing except leatherwear	81.8	68.7	58.2	45.5	46.7
Curing and tanning of leather, manufacture of cases, bags, saddlery and harness	77.2	73.3	72.2	61.8	59.5
Footwear	79.6	76.9	60.0	50.3	51.2
Sawing and planing of timber	123.3	113.5	98.8	79.7	80.3
Woodwork and manufacture of cork goods and wickerwork	131.7	127.4	128.4	98.0	116.9
Paper and paper products	126.3	153.4	164.7	167.5	150.1
Publishing	122.0	129.1	118.0	117.0	111.6
Printing and associated services	116.8	109.9	102.5	96.3	100.0
Oil refinery products	104.8	99.2	105.4	99.5	83.8
Basic chemicals	146.0	135.6	129.7	133.4	140.1
Other chemicals	120.6	131.1	136.6	135.6	145.4

(1) Provisional figures.

(2) Excludes copper smelting and refining.

Central Bank of Chile

	2006	2007	2008	2009	2010 (1)
Manufacture of rubber products	152.1	142.4	119.1	80.3	98.8
Manufacture of plastic products	124.4	131.4	134.3	128.1	134.2
Manufacture of glass and its products	151.2	174.5	168.1	155.5	110.7
Manufacture of non-metal mineral products n.c.p.	119.5	125.7	124.0	99.1	102.8
Basic iron and steel industry	125.3	130.7	125.5	104.0	97.4
Primary non-iron and precious metal products	150.7	168.8	149.5	135.6	113.7
Metal goods for structural use, metal vessels, containers and tanks	96.4	108.2	122.7	159.0	155.2
Other metal goods, and services provided to metal goods manufacturers	119.0	114.2	114.6	88.6	98.2
Machinery for general use	124.6	125.7	138.3	124.7	135.1
Machinery for special use	130.6	125.3	137.7	138.0	148.1
Domestic appliances n.c.p.	129.9	137.3	136.7	103.1	119.1
Engines, generators and electrical transformers	217.2	210.2	248.1	202.2	248.9
Equipment for electric power distribution and control	138.3	86.2	113.9	86.2	81.8
Manufacture of electric lamps	56.7	36.7	21.5	35.6	44.4
Medical instruments and apparatus, and measurement, testing, navigation and other apparatus except optical instruments	219.6	384.4	365.7	350.2	442.7
Motorized vehicles	31.1	62.7	34.9	0.0	0.0
Parts, pieces and accessories for motorized vehicles and their engines	91.9	88.0	72.2	78.3	80.0
Furniture	119.0	126.1	117.8	86.7	91.3
Manufacturing industries n.c.p.	91.8	61.4	83.1	57.9	67.5

(1) Provisional figures.

n.c.p. = not included in other entries.

	2006	2007	2008	2009	2010 (1)
Manufacturing sales (A) (2002 average=100)					
General Index (2)	124.2	129.6	128.5	121.1	121.6
Production, processing and preservation of meat, fish fruit, legumes, vegetables, oils and fats	124.0	125.3	125.8	113.8	105.4
Dairy products	113.7	115.4	115.8	113.4	122.2
Flour milling products starch and its by-products and dry feed	147.3	151.8	144.0	112.1	123.2
Other foodstuff	112.4	115.5	115.6	115.0	121.5
Beverages	126.2	136.6	141.0	145.0	154.9
Manufacture of tobacco products	135.3	138.7	144.7	129.0	153.4
Weaving, knitting and finishing of textiles	72.2	71.2	65.3	53.3	49.8
Other textiles	342.8	397.9	319.5	266.5	300.2
Knitted and crocheted articles	81.5	84.3	76.3	60.6	58.8
Clothing except leatherwear	93.7	81.8	80.8	59.6	58.7
Curing and tanning of leather, manufacture of cases, bags, saddlery and harness	77.8	78.1	76.8	61.2	59.7
Footwear	83.8	82.9	59.3	48.0	52.4
Sawing and planing of timber	124.8	113.2	97.6	82.9	78.6
Woodwork and manufacture of cork goods and wickerwork	140.7	142.0	135.8	107.6	121.9
Paper and paper products	124.1	149.7	156.5	168.3	147.9
Publishing	120.7	127.6	115.9	115.7	109.2
Printing and associated services	98.8	101.9	92.1	88.6	90.1
Oil refinery products	110.7	105.8	106.3	104.4	89.8
Basic chemicals	126.4	112.6	109.7	111.4	125.5
Other chemicals	123.9	134.0	138.7	138.7	147.0

(1) Provisional figures.

(2) Excludes copper smelting and refining.

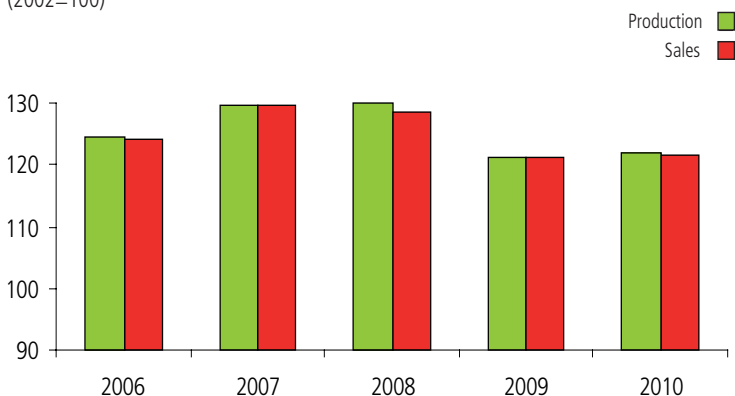
Central Bank of Chile

	2006	2007	2008	2009	2010 (1)
Manufacture of rubber products	139.8	132.3	108.0	75.1	102.1
Manufacture of plastic products	140.3	143.6	158.0	141.4	140.3
Manufacture of glass and its products	144.7	163.4	153.7	146.8	111.8
Manufacture of non-metal mineral products n.c.p.	123.4	129.0	129.0	104.4	105.1
Basic iron and steel industry	128.3	133.3	126.3	103.8	99.8
Primary non-iron and precious metal products	150.0	182.8	158.4	133.9	116.2
Metal goods for structural use, metal vessels, containers and tanks	97.6	110.4	121.0	157.5	158.7
Other metal goods, and services provided to metal goods manufacturers	147.6	159.4	143.9	103.3	117.3
Machinery for general use	109.1	121.0	125.8	115.9	122.7
Machinery for special use	140.5	146.0	173.1	170.5	175.0
Domestic appliances n.c.p.	121.4	128.1	124.4	100.7	112.1
Engines, generators and electrical transformers	177.4	203.7	224.2	232.7	252.3
Equipment for electric power distribution and control	140.5	87.7	114.7	89.6	77.4
Manufacture of electric lamps	56.7	40.6	22.8	36.2	48.6
Medical instruments and apparatus, and measurement, testing, navigation and other apparatus except optical instruments	225.4	380.5	367.2	350.0	439.9
Motorized vehicles	29.1	58.6	24.4	0.0	0.0
Parts, pieces and accessories for motorized vehicles and their engines	101.4	101.4	90.8	89.7	95.4
Furniture	118.3	123.1	114.7	86.2	104.0
Manufacturing industries n.c.p.	93.1	80.3	82.3	71.9	68.2

(1) Provisional figures.

n.c.p. : Not included in other entries.

Manufacturing production and sales indices (2002=100)



Source: National Statistics Bureau (INE).

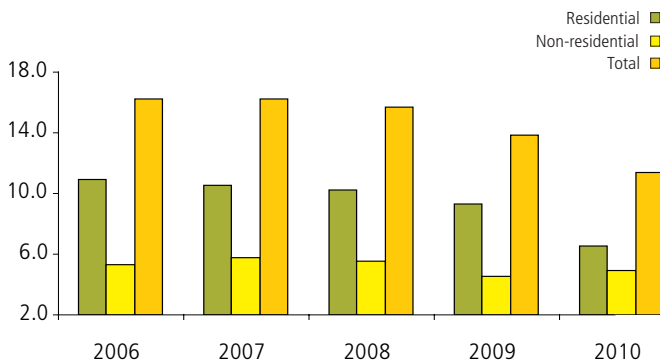
	2006	2007	2008	2009	2010
General index of industrial production (M) (2003=100)	113.7	117.1	115.8	105.7	105.3
General index of industrial sales (M) (2003=100)	113.6	116.4	114.6	107.0	105.5
CONSTRUCTION					
Delivery of construction materials (N)					
Cement delivery (thousands of bags of 42.5 kg)	96,742	104,470	108,762	91,207	91,091
Delivery of iron bars (metric tons)	475,651	535,546	536,742	354,679	424,531
Pre-mixed concrete delivery (cubic meters)	5,725,462	6,119,831	7,052,946	5,696,893	6,134,273
Intermediate goods for construction (M) (annual average) (2003=100)					
Production index	122.8	126.2	125.2	103.8	106.1
Sales index	119.4	121.8	120.2	102.1	102.8

	2006	2007	2008	2009	2010
Total built-up area (A) (1) (thousands of square meters)	16,232.1	16,253.6	15,711.1	12,833.0	11,419.0
Housing	10,955.8	10,522.5	10,194.5	9,302.9	6,519.6
Manufacturing, trade and financial institutions	3,223.1	3,406.3	3,407.7	2,675.3	3,064.9
Services	2,053.2	2,324.8	2,108.9	1,854.8	1,834.4
Private sector	15,451.9	15,433.6	15,048.2	12,874.1	10,552.3
Housing	10,525.9	10,215.0	9,926.6	8,958.4	6,210.5
Manufacturing, trade and financial institutions	3,192.5	3,364.5	3,396.5	2,638.0	3,020.0
Services	1,733.5	1,854.0	1,725.1	1,277.6	1,321.9
Public sector	780.2	820.0	662.9	958.9	866.6
Housing	430.0	307.4	267.9	344.5	309.2
Manufacturing, trade and financial institutions	30.6	41.8	11.1	37.3	44.9
Services	319.7	470.8	383.8	577.1	512.5
Number of dwellings (A) (units)	163,236	150,710	150,911	140,619	96,036
Private sector	154,106	145,106	146,488	134,513	90,714
Public sector	9,130	5,604	4,423	6,106	5,322

(1) Building statistics refer to new works, that is, any building over a new built-up area, structurally and functionally isolated. Information referring to the private sector corresponds to approved construction permits extended by the corresponding Municipal Works Office. Public sector data gathers information from all public institutions which permanently carry on construction activities.
(n.a.) Not available

Annually built-up area, residential and non-residential nationwide

(millions of square meters)



Source: National Statistics Bureau (INE).

	2006	2007	2008	2009	2010
ENERGY					
Installed electric power (O) (1) (MW) (2)					
Thermoelectric	7,556	7,940	8,174	(n.a.)	(n.a.)
Hydroelectric	4,813	4,907	4,943	(n.a.)	(n.a.)
Total	12,370	12,847	13,118	(n.a.)	(n.a.)
Electric power generation (A) (3) (GWh) (2)					
Thermoelectric	16,763	24,607	26,655	24,170	26,113
Public services	14,208	21,501	23,352	21,497	23,464
Self-producers	2,555	3,106	3,303	3,213	2,649
Hydroelectric	28,746	22,764	24,011	24,930	21,698
Public services	28,195	22,286	23,536	24,435	21,263
Self-producers	551	478	475	495	435
Combined cycle (4)	8,886	10,351	8,005	8,686	12,009
Public services	8,882	10,347	8,000	8,680	12,003
Self-producers	4	4	5	6	6
ERNC (5)	0	0	38	66	339
Public services	0	0	38	66	338
Self-producers	-	-	-	-	1
Total	54,396	57,722	58,709	58,392	60,159
Public services	51,285	54,134	54,926	54,678	57,069
Self-producers	3,111	3,588	3,783	3,714	3,090

(1) Generating capacity supplying the four interconnected electric systems (grids) covering the country —understood as Chile's South American territory, that is, excluding Chile's Antarctic and Pacific territories— namely, (i) the Northern Grid (SING) which extends from Arica to Antofagasta, covering 24.5% of the country; (ii) the Central Grid (SIC) which extends from Taltal in the north to the island of Chiloé in the south, covering 43% of the country, with 93% of the population; and (iii) the two independent grids of Aisén and Magallanes in the southernmost part of Chile, which together cover 31.8% of the country, with only 1.6% of the population.

(2) One megawatt hour (MWh) equals one million watt hours, and one gigawatt hour (GWh) equals one thousand megawatt hours.

(3) Public services are the firms that generate power to sell to third parties. They are connected to the four grids supplying the country. Self-producers are the firms that generate electric power for their own consumption.

(4) Combined cycle to Natural gas.

(5) ERNC: Energías renovables no Convencionales / Renewable not conventional energies.

(-) Without information.

(n.a.) Not available.

	2006	2007	2008	2009	2010
Energy consumption according to source (O) (teracalories)	338,278	360,160	355,259	(n.a.)	(n.a.)
Electricity (1)	45,323	47,494	47,969	(n.a.)	(n.a.)
Coal, coke and tar	43,335	49,792	52,867	(n.a.)	(n.a.)
Petroleum by-products and natural gas	127,301	167,820	175,775	(n.a.)	(n.a.)
Gas (2)	75,018	45,213	27,479	(n.a.)	(n.a.)
Firewood and others	47,301	49,841	51,170	(n.a.)	(n.a.)
Electric power delivery by type of consumer (A) (GWh) (3)					
Residential	8,649	8,983	8,691	9,049	9,644
Commercial	5,939	6,510	6,463	6,917	7,261
Mining	17,903	18,878	19,323	19,988	20,629
Agriculture	1,106	1,197	1,227	1,271	1,330
Manufacturing	15,628	16,530	16,386	15,155	14,176
Other	5,618	6,037	6,787	6,046	6,150
Total	54,843	58,135	58,877	58,427	59,190
Delivery Index of electric power, pipeline gas and drinkable water (A) (average 2003 = 100)					
Delivery index by type					
General	116.7	117.8	115.5	118.8	124.9
Average change	4.6	0.8	-1.9	2.8	5.1
Electric power	120.0	125.3	125.3	127.5	131.7
Average change	4.3	4.4	0.0	1.8	3.3
Pipeline gas	116.6	89.7	67.1	78.5	104.6
Average change	10.2	-23.1	-25.2	17.1	33.3
Drinkable water	105.4	106.1	106.9	109.3	111.7
Average change	2.7	0.4	0.7	2.3	2.1
Oil by-products consumption (L) (thousands of cubic meters)					
Fuel oil	2,103.1	2,703.7	2,779.2	2,264.1	1,727.4
Diesel oil	6,235.7	9,484.7	10,135.7	9,095.9	8,801.8
Kerosene	947.6	1,063.1	1,071.8	1,041.2	1,134.4
Engine gasoline	2,934.6	3,121.3	3,240.4	3,486.2	3,588.0
Liquefied gas	1,840.8	2,113.8	2,114.4	2,129.2	2,052.9

(1) Electric caloric equivalence: 860 Kcal/KWh.

(2) Includes common gas, smelting furnace gas, natural gas, methanol and biogas.

(3) One megawatt hour (MWh) equals one million watt hours. One gigawatt (GWh) equals one thousand megawatt hours.

(n.a.) Not available.

	2006	2007	2008	2009	2010
TRANSPORT					
Road traffic (A)					
Railway					
Number of passengers	18,562,879	21,239,431	22,210,136	23,274,675	22,020,132
Freight in metric tons	25,746,611	26,616,197	27,185,037	25,492,418	25,215,110
Passengers carried by Santiago subway (thousands)	331,007	600,776	641,687	607,909	620,700
Vehicle traffic	2,599,425	2,762,593	2,955,303	3,068,220	3,299,446
Cars, station wagons	1,514,220	1,615,458	1,738,477	1,816,143	1,978,018
Pick-up trucks	500,831	524,206	551,913	567,445	608,507
Vans	124,911	129,701	134,388	136,440	142,418
Jeeps	84,932	85,578	87,085	89,210	92,042
Airway traffic (A)					
Domestic traffic					
Passengers	3,379,092	4,096,489	4,770,727	5,058,106	5,974,730
Freight (metric tons)	30,640	29,651	27,923	27,295	29,203
Chilean international traffic (1)					
Total					
Passengers	4,231,491	4,914,490	4,938,298	4,653,776	5,089,757
Freight (metric tons)	249,286	287,281	282,486	234,761	266,643
Chilean firms					
Passengers	2,428,257	2,723,244	2,724,798	2,495,002	2,753,995
Freight (metric tons)	138,633	156,489	154,562	128,708	154,127
Foreign firms					
Passengers	1,803,234	2,191,246	2,213,500	2,158,774	2,335,762
Freight (metric tons)	110,653	130,792	127,924	106,053	112,516
Freight carried by ship (A) (thousands of metric tons)					
Total	99,405	107,153	113,290	106,683	114,993
Loaded	55,996	57,031	59,386	59,792	61,576
Unloaded	43,410	50,122	53,904	46,891	53,417
To/from abroad navigation	75,040	82,397	87,291	83,103	91,380
Loaded	43,813	44,653	46,386	48,002	49,770
Unloaded	31,227	37,744	40,905	35,101	41,610
Coasting navigation	24,366	24,756	25,998	23,580	23,613
Loaded	12,183	12,378	12,999	11,790	11,807
Unloaded	12,183	12,378	12,999	11,790	11,807

(1) Includes arrivals and departures, and loaded and unloaded cargo.

	2006	2007	2008	2009	2010
COMMUNICATIONS (A)					
Mail handled by post office ordinary and registred documents (thousands)					
Domestic	423,076	467,573	483,629	422,246	507,740
International	17,994	19,516	26,074	20,902	7,661
Fixed telephone lines (millions of minutes)					
Local					
Local service	12,315	11,566	11,148	11,212	10,774
Time of Internet connection	1,771	897	424	154	51
Long distance service					
Domestic	1,555	1,434	1,310	1,211	1,025
International	185	179	174	166	153
Time of Internet connection	267	76	31	14	8
Public telephones (millions of minutes)	108	86	76	59	46
Mobile phones (millions of minutes)					
Domestic	13,493	18,146	22,208	25,430	30,756
International	108	104	113	113	130
Time of Internet connection	23	19	20	4	3
TOURISM (A)					
Number of tourism hotels providing information (average units)	1,427	1,425	1,397	1,412	1,381
Arrivals (number of persons)					
Within Chile	3,082,009	3,370,685	3,530,556	3,328,048	3,336,612
From abroad	1,460,162	1,562,604	1,564,422	1,423,833	1,398,828
Total	4,542,171	4,933,289	5,094,978	4,751,881	4,735,440
Overnight guests (days)					
Within Chile	6,169,990	6,577,700	6,900,280	6,607,216	6,642,634
From abroad	3,203,282	3,605,420	3,709,475	3,220,831	3,193,397
Total	9,373,272	10,183,120	10,609,755	9,828,047	9,836,031
Average overnight guests in tourism hotels					
Chileans	2.0	2.0	2.0	2.0	2.0
Foreigners	2.2	2.3	2.4	2.3	2.3
Total	2.1	2.1	2.1	2.1	2.1

	2006	2007	2008	2009	2010
PRICES					
Consumer price index (CPI) (A) (2009=100) (1)					
General index					
Average	-	-	-	100.00	101.41
Change (2)	-	-	-	-	1.4
December	-	-	-	99.51	102.4
Change (3)	-	-	-	-	3.0
CPI Subindices (December of each year)					
Foodstuff and non-alcoholic beverages	-	-	-	100.03	105.62
Alcoholic beverages and tobacco	-	-	-	99.63	110.73
Clothing and footwear	-	-	-	94.24	74.60
Accommodations, water, electricity gas and other fuels	-	-	-	98.97	103.85
Furniture, household goods, and preservation appliances	-	-	-	99.09	99.63
Health care	-	-	-	100.46	101.81
Transport	-	-	-	101.79	108.04
Communications	-	-	-	97.15	93.70
Leisure and culture	-	-	-	96.73	91.01
Education	-	-	-	101.71	105.28
Catering and hotels	-	-	-	101.15	105.95
Assorted goods and services	-	-	-	97.83	113.30

(1) The National Statistics Bureau, updated de CPI with a national CPI internationally comparable. Hence, the information with the new basis is only available since 2009.

(2) Change on previous period.

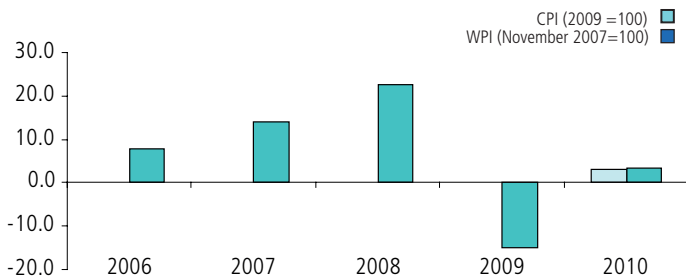
(3) December to December change.

	2006	2007	2008	2009	2010
Wholesale price index (WPI) (A) (November 2007=100)					
General index					
Average	88.21	94.09	109.76	110.07	107.83
Change (1)	7.0	6.7	16.5	0.3	-2.0
December	87.77	100.07	122.76	104.50	108.19
Change (1)	7.9	14.0	22.7	-14.9	3.5
WPI Subindices (December of each year)					
Domestic products	86.78	100.53	117.17	105.61	111.93
Agriculture, livestock and forestry	-	98.64	109.54	102.44	119.32
Fishing	-	106.56	149.08	127.10	124.75
Mining and quarrying	93.29	90.90	77.24	95.79	113.74
Manufacturing	88.02	101.13	119.55	104.54	109.59
Electricity, gas and water	-	103.12	127.43	116.48	114.44
Imported products	91.26	99.23	133.01	102.47	101.34
Agriculture, livestock and forestry	90.06	102.26	132.77	112.07	135.38
Mining and quarrying	72.91	99.83	116.46	75.94	84.33
Manufacturing	97.50	99.04	136.13	107.20	103.64

(1) Change on previous period.

Wholesale (WPI) and consumer price (CPI) indices

(12-month percentage change)



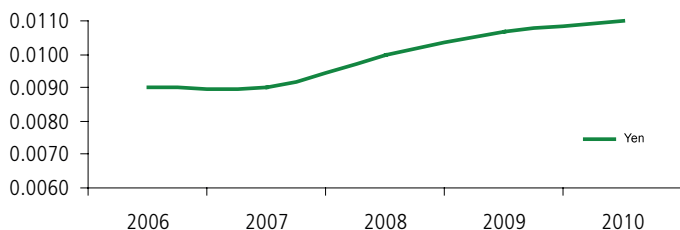
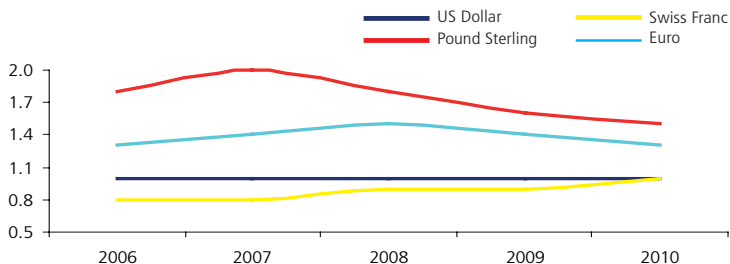
Source: National Statistics Bureau (INE).

Exchange value of some foreign currencies (D)(pesos /foreign currency unit)
(annual average)

	2006	2007	2008	2009	2010
United States Dollar (Observed)	530.28	522.47	522.46	559.61	510.25
Euro	666.13	715.20	761.82	777.55	676.59
Pound Sterling	977.13	1,045.49	956.61	872.79	788.14
Swiss Franc	423.50	435.43	480.91	515.31	489.41
Yen	4.56	4.44	5.09	5.99	5.82

Quotation of some foreign currencies

(annual average per US\$)



Source: Central Bank of Chile.

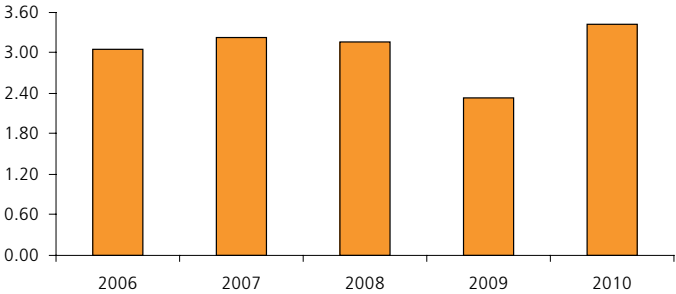
Exchange rate of some foreign currencies (P)(foreign currency / US\$)
(annual average)

	2006	2007	2008	2009	2010
United States Dollar	1.0000	1.0000	1.0000	1.0000	1.0000
Euro	0.8005	0.7309	0.6833	0.7197	0.7550
Pound Sterling	0.5436	0.4997	0.5448	0.6415	0.6474
Swiss Franc	1.2532	1.2002	1.0829	1.0858	1.0432
Yen	116.3170	117.7562	103.4695	93.5506	87.7885

	2006	2007	2008	2009	2010
Prices of key commodities (annual average)					
Refined copper LME US\$/lb (1)	3.049	3.229	3.155	2.336	3.418
Crude oil WTI (P) (US\$/barrel)	66.1	72.3	99.6	61.7	79.4
Gasoline in the US (P) (US\$/cubic meter) (2)	482.0	538.3	647.7	431.4	541.9
Pulp NBSK (P) (US\$/metric ton) (3)	675.0	794.0	852.2	657.1	930.4
Gold ounce troy (P) (US\$/oz) (4)	604.3	697.4	872.0	973.7	1,226.0
Silver ounce troy (P) (US\$/oz) (4)	11.6	13.4	15.0	14.7	20.2

- (1) London Metal Exchange (LME) price of A grade (Settlement) copper.
(2) Corresponds to Gulf 87-octane gasoline, reference price used by Enap to fix fuel prices in Chile.
(3) Corresponds to long-fiber bleached pulp, Northern Bleached Softwood Kraft Pulp (NBSK).
(4) The troy ounce is a unit of weight (twelfth part of a pound) equivalent to 31.103 g.

Annual average of copper price
(US\$/ lb)



Source: London Metal Exchange (LME).

	2006	2007	2008	2009	2010
Stock exchange indices (nominal value at last day of each year)					
General price index of shares (IGPA) (1) (30 December 1980=100)					
Value	12,373.68	14,076.25	11,324.07	16,630.91	22,979.22
Percentage change	34.4	13.8	-19.6	46.9	38.2
Price index of selected shares (IPSA) (2) (30 December 2002=100)					
Value	2,693.22	3,051.83	2,376.42	3,581.42	4,927.53
Percentage change	37.1	13.3	-22.1	50.7	37.6
Inter-10 (3) (29 December 2007=3,051.83)					
Value	2,750.39	3,051.83	3,305.36	4,487.72	5,719.05
Percentage change	32.7	11.0	8.3	35.8	27.4
Indexed unit of account (UF) (D) (last day of each year)					
	18,336.38	19,622.66	21,452.57	20,942.88	21,455.55

- (1) Includes almost all shares traded in the Santiago Stock Exchange. Its purpose is to measure price changes of the associated firms through their equity value, grouped by type of activity.
(2) Includes the 40-most traded shares in the Santiago Stock Exchange, for each year, in order to measure their price changes.
(3) Refers to the IPSA 10-most traded shares via ADRs, for each quarter.

	2006	2007	2008	2009	2010
MONEY AND BANKING (D)					
Monetary indicators (1)					
Monetary base and private monetary aggregates (annual average in billions of pesos)					
Monetary base					
Money in circulation	3,504.1	3,660.6	4,287.6	4,735.2	5,595.0
C	1,958.1	2,210.3	2,484.8	2,754.5	3,709.2
D1	4,738.6	5,417.2	5,621.4	7,257.6	8,214.1
Dv + Ahv	1,883.4	2,502.4	2,701.7	3,267.0	4,682.1
M1	8,580.1	10,129.8	10,807.8	13,279.1	16,105.4
Dp	26,945.9	33,217.5	40,415.5	34,751.3	36,535.7
Ahp	2,282.7	2,356.4	2,563.5	2,628.0	2,840.7
Mutual funds shares in banks up to one year	4,613.8	6,176.8	6,512.0	9,448.2	8,249.4
Deposits in savings and credit cooperatives	174.6	221.4	342.6	346.3	405.0
Mutual funds investment in M2	4,388.8	6,053.7	6,021.2	8,712.9	7,601.9
Savings and credit cooperatives investment M2	12.9	16.6	22.2	24.0	23.3
M2	38,195.4	46,031.7	54,598.0	51,716.0	56,511.0
Foreign currency deposits	3,630.3	4,142.9	6,666.5	5,387.9	6,927.6
Central Bank of Chile's instruments	5,879.4	4,082.7	6,330.6	6,214.4	4,639.0
Treasury bonds	1,058.5	1,327.6	2,335.7	3,451.2	6,063.7
Credit bills	4,467.4	4,138.2	3,816.7	2,965.1	2,574.1
Commercial papers	364.2	389.5	503.4	496.9	325.4
Firms bonds	8,999.0	10,443.2	12,650.5	13,853.4	14,487.8
Other mutual funds shares	4,359.5	6,094.8	4,091.8	6,548.9	8,651.9
Savings shares freely subscribed	538.9	706.5	459.9	624.2	773.1
Mutual funds investment in M3	2,696.8	3,018.0	2,953.5	4,071.8	3,735.7
Pension funds investment in M3	202.2	248.1	248.3	180.0	239.0
M3	64,593.7	74,090.9	88,251.3	87,006.1	96,708.7
Assets and liabilities of the banking sector (2)					
(balance in billions of pesos)					
Net foreign assets					
Central Bank's international reserves	10,383	8,384	14,572	12,849	13,051
Other	-1,722	-1,890	-3,337	-4,609	-5,310
Domestic credit					
Private sector	49,569	59,645	70,827	63,363	68,320
General Government (net)	-2,744	-2,965	-3,186	4,494	-1,681
Other (net)	-3,904	-4,733	-9,704	-6,710	-5,087
Total	51,583	58,592	69,172	69,387	69,293
Private money and quasi-money					
Money	9,221	10,797	11,093	14,086	16,861
Quasi-money					
Banks	36,778	43,881	51,965	49,801	48,281
Central Bank's instruments	5,584	3,914	6,113	5,500	4,151

(1) Monetary base includes banknotes, coins and checks issued by the Central Bank, held by private sector, and monetary reserves of banks and financial institutions.

C: Includes banknotes, coins and checks issued by the Central Bank, at present freely circulating, less cash balance of the financial system.

M1: C + D1 (D1: Nonfinancial private-sector current-account deposits net of float) + Dv (Demand deposits other than checking accounts) + Ahv (Demand savings deposits).

M2: M1 + Dp (Time deposits of the private sector) + Ahp (Time savings deposits) + Mutual funds shares with debt-instrument investment up to one year (nonfinancial private sector) + Deposits in savings and credit cooperatives less mutual funds investment in M2, and less savings and credit cooperatives investment in M2.

M3: M2 + private-sector foreign-currency deposits + Central Bank's instruments + Treasury bonds + credit bills + other mutual funds shares + pension funds savings shares freely subscribed less mutual funds investment in M3, and less pension funds investment in M3.

(2) Provisional figures on the basis of information provided by the financial system.

Central Bank of Chile

	2006	2007	2008	2009	2010
Loans by type of debtor (Q) (1) (balance in billions of pesos) (2)					
Commercial (3)	27,235	33,390	35,533	35,863	38,066
Consumption (4)	6,770	7,809	8,567	8,675	9,706
Housing	10,800	13,432	16,370	17,548	19,586
Foreign trade	585	646	-	-	-
Overdue	-	-	-	-	-
Other	340	319	749	874	39
Total	45,730	55,597	61,220	62,959	67,397
Domestic currency deposits (1) (balance in billions of pesos)					
Less than 30-day deposits	9,498	11,518	11,893	14,819	17,556
Over 30-day deposits	30,974	38,008	44,968	40,979	44,143
Sale of credit certificates with repurchase agreement	722	733	1,668	2,825	674
Liabilities in credit bills	4,851	4,712	4,417	3,815	3,289
Foreign currency deposits (5) (US\$ million balance)					
Demand deposits (6)	1,406	1,737	2,407	2,845	4,036
Time deposits (7)	7,122	9,426	12,867	14,040	19,854
INTEREST RATES (D) (annual average)					
30- to 89-day operations (8)					
Nominal (9)					
Deposits	4.99	5.47	7.24	2.01	1.81
Loans	7.72	8.34	12.49	6.96	4.66
Spread					
Gross (10)	2.73	2.87	5.25	4.95	2.85
Net (11)	2.46	2.58	4.81	4.70	2.68
Alternative cost of reserve requirement (12)	0.27	0.29	0.44	0.25	0.16
Indexed loans to the UF change	5.23	3.97	3.65	5.19	3.73
Indexed operations to the exchange rate variation (13)					
Deposits	2.63	3.56	3.75	1.29	-
Loans	6.26	6.04	10.28	5.10	4.23
US dollar operations (14)					
Deposits	4.38	4.90	3.45	1.09	0.82
Loans	5.77	5.85	4.97	3.27	1.81

(1) As from January 2003, the financial system includes only banks.

(2) Total: domestic and foreign currencies.

(3) As of January 2008, commercial loans include foreign trade and credit cards used by firms, before the payment's date. Besides, contingent loans are excluded.

(4) As of January 2008, consumer loans include a new type of credit, that is credit cards used by before natural individuals before the payment's date.

(5) Only banks.

(6) Less than 30-day demand deposits.

(7) 30-day demand deposits and over.

(8) Average weighted rates on all operations carried out by banks and financial institutions. As from January 2003, the financial system includes only banks.

(9) Annualized interest rates (360-day) by simple interest conversion.

(10) Loan and deposit rates difference.

(11) Loan and deposit rates difference, less cost of reserve requirement.

(12) Gross and net spreads difference.

(13) Annualized rate on exchange rate variation.

(14) Annual rate includes only banks.

	2006	2007	2008	2009	2010
90- to 365-day operations (1)					
Nominal (2)					
Deposits	5.47	5.88	7.84	2.34	2.73
Loans	14.44	13.58	15.20	12.92	11.79
Indexed (3)					
Deposits	2.83	2.20	2.23	3.13	1.31
Loans	5.18	4.64	4.50	4.61	3.06
Spread					
Gross (4)	2.35	2.43	2.27	1.48	1.76
Net (5)	2.13	2.09	1.92	1.38	1.26
Alternative cost of reserve requirement (6)	0.23	0.34	0.35	0.10	0.49
Indexed operations to the exchange rate variation (7)					
Deposits	3.77	4.25	0.17	-	-
Loans	6.64	6.57	9.76	5.88	-
US dollar operations (8)					
Deposits	4.95	5.33	3.74	1.41	1.21
Loans	6.22	6.20	5.09	3.75	2.41
International (annual average)					
<i>Libor</i> 180-day for operations in US\$	5.27	5.26	3.06	1.13	0.52
<i>Prime</i> for operations in US\$	7.95	8.06	5.12	3.25	3.25
<i>Euribor</i> for operations in US\$	3.43	4.45	4.82	1.63	1.35

(1) Average weighted rates of all operations carried out by banks and financial institutions. As from January 2003, the financial system includes only banks.

(2) Annualized interest rates (360-day) by simple interest conversion.

(3) Annualized rate on indexed unit of account (UF) variation.

(4) Deposit and loan rates difference on indexed operations.

(5) Deposit and loan rates difference on indexed operations less cost of reserve requirement.

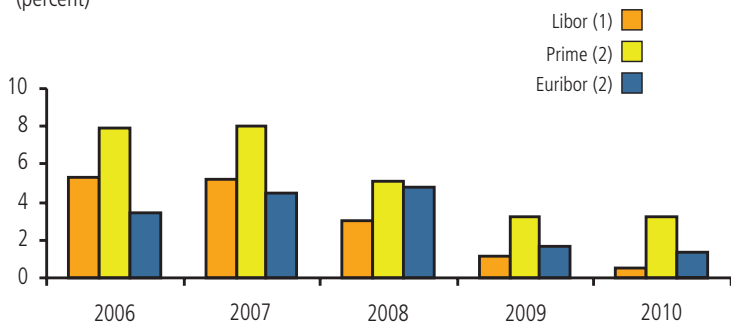
(6) Gross and net spreads difference.

(7) Annualized rate on exchange rate variation.

(8) Annual rate includes only banks.

Libor, Prime and Euribor on US dollar operations

(percent)



(1) Annual average of monthly 180-day rates.

(2) Annual average of monthly rates.

Sources: Bloomberg and Reuters.

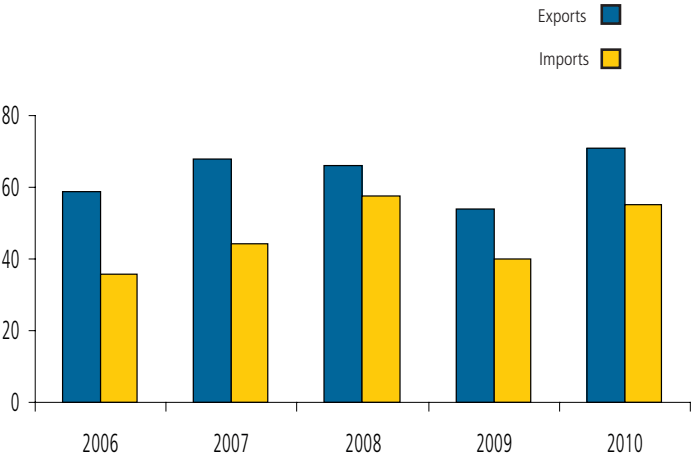
	2006	2007	2008	2009	2010
BALANCE OF PAYMENTS (D) (1) (US\$ million)					
I. Current account	7,154	7,458	-3,307	2,570	3,802
A. Goods and services	22,149	22,954	7,565	12,673	14,836
Goods	22,780	23,941	8,529	14,117	15,855
Export	58,680	67,972	66,259	54,004	71,028
Import	-35,900	-44,031	-57,730	-39,888	-55,174
Services	-631	-987	-964	-1,444	-1,019
Credit	7,830	8,962	10,823	8,634	10,797
Debit	-8,462	-9,950	-11,787	-10,078	-11,816
B. Income	-18,401	-18,625	-13,803	-11,666	-15,424
Payroll	-3	-3	-3	-1	-2
Investment income	-18,398	-18,622	-13,799	-11,665	-15,422
Income from direct investment	-18,773	-20,071	-14,571	-11,981	-15,294
Abroad	1,141	2,761	2,859	2,820	3,662
In Chile	-19,913	-22,832	-17,430	-14,801	-18,956
Income from portfolio investment	229	1,142	768	685	665
Dividend	618	1,057	681	793	1,003
Interest	-389	85	87	-107	-338
Income from other investment	146	308	4	-369	-794
Credit	1,075	1,264	1,100	633	389
Debit	-929	-956	-1,096	-1,001	-1,183
C. Current transfers	3,406	3,129	2,930	1,563	4,390
Credit	4,003	3,857	3,875	2,512	5,481
Debit	-596	-728	-945	-949	-1,091
II. Capital and financial account	-5,628	-7,008	2,157	-3,344	-3,267
A. Capital account	13	16	3	15	5,641
B. Financial account	-5,641	-7,024	2,154	-3,359	-8,908
Direct investment	5,127	9,961	7,109	4,813	6,351
Direct investment abroad (assets)	-2,171	-2,573	-8,041	-8,061	-8,744
Equity capital	-896	462	-5,102	-4,497	-4,568
Profits reinvestment	-998	-2,394	-2,306	-2,571	-3,174
Other capital	-277	-641	-633	-993	-1,002
Direct investment in Chile	7,298	12,534	15,150	12,874	15,095
Equity capital	1,980	2,622	7,775	1,822	4,844
Profits reinvestment	7,143	10,182	6,597	10,519	7,839
Other capital	-1,824	-270	778	532	2,411
Portfolio investment	-9,238	-16,461	-7,619	-11,769	7,071
Assets	-10,085	-15,953	-10,252	-13,691	-16,503
Liabilities	846	-508	2,633	1,972	9,432
Financial derivatives	301	454	-952	-295	-922
Assets	1,552	2,608	11,708	8,650	8,836
Liabilities	-1,251	-2,154	-12,660	-8,945	-9,759
Other investment	167	-4,191	10,062	5,541	-4,262
Assets	-3,927	-11,098	3,715	-1,412	-7,394
Commercial credits	-1,386	-3,041	2,539	-3,071	-3,241
Loans	-242	-729	-848	-290	-806
Currency and deposits	-2,299	-7,328	2,024	1,949	-585
Other assets	0.0	0.0	0.0	0.0	-2,762
Liabilities	4,094	6,906	6,346	6,953	3,152
Commercial credits	1,749	1,508	-580	-445	2,951
Loans	2,330	5,409	6,801	6,092	-116
Currency and deposits	18	-10	125	230	319
Other liabilities	-3	-1	-1	-8	-2
Allocations SDR				1,084	-1
Reserves assets	-1,997	3,214	-6,444	-1,648	-3,024
III. Errors and omissions	-1,526	-450	1,150	-774	-534
Balance of payments	1,997	-3,214	6,444	1,647	3,024

(1) Updated figures of the Balance of Payments calculated in accordance with the new methodological criteria established in the fifth edition of the IMF's *Balance of Payments Manual*.

	2006	2007	2008	2009	2010
BALANCE OF TRADE BY PRODUCT					
Goods exports (1) (US\$ million fob) (D)					
I. General goods	57,727	66,948	64,903	52,689	69,589
A. General tariff regime	56,430	65,379	63,082	51,239	67,915
1. Mining	37,024	43,345	37,988	30,694	44,279
Copper	32,710	37,778	32,842	27,702	40,257
Iron	328	402	593	534	1,110
Nitrate and iodine	361	406	554	481	564
Metallic silver	251	462	334	314	369
Molybdenum oxide and ferromolybdenum	2,785	3,845	3,115	1,345	1,534
Lithium carbonate	123	189	219	113	174
Table salt and sea salt	43	33	69	122	113
Other	422	231	262	83	159
2. Agriculture, livestock forestry and fishing	2,765	3,225	4,009	3,646	4,352
Fruitgrowing	2,401	2,808	3,451	3,026	3,708
Grapes	998	1,027	1,289	1,204	1,345
Other agriculture	314	365	484	544	551
Corn seeds	100	116	178	197	166
Vegetable seeds	53	56	61	78	104
Forestry	16	11	19	14	21
Pine logs	0	1	0	0	0
Logs for pulp	2	1	0	0	2
Fish catch	34	42	55	62	72
Algae	34	42	55	61	71
3. Manufacturing	16,641	18,809	21,085	16,899	19,283
Foodstuffs	5,556	6,051	6,982	6,273	6,167
Fishmeal	498	529	490	607	520
Salmon and trout	2,153	2,170	2,335	2,030	2,010
Molluscs and crustaceans	308	336	458	373	364
Canned fish	160	165	135	134	69
Dehydrated fruit	202	215	294	248	300
Raisins	81	91	136	119	141
Tomato paste and juice	63	69	69	83	95
Sugar-free frozen fruit	145	174	250	215	229
Fruit juice	154	155	230	182	158
Canned fruit	85	103	130	102	107
Powdered drink	107	153	178	235	248
Pork meat	312	360	338	340	323
Beverages and tobacco	1,027	1,343	1,496	1,471	1,658
Wine	966	1,257	1,378	1,381	1,547
Forestry and wooden furniture	2,006	2,034	2,145	1,537	1,858
Beams and sawn wood of pine	756	833	741	430	550
Wood chips	192	220	339	274	338
Planed wood	326	220	199	140	179
Wooden fiber boards	264	281	307	240	276
Wooden grain boards	17	23	25	20	25
Woodwork	103	96	90	55	65
Wooden pallets	16	26	6	13	5
Pulp, paper and other	1,905	2,941	3,214	2,649	3,103
Unbleached pulp	163	194	166	173	202
Bleached pulp	1,199	2,172	2,383	1,839	2,220
Newsprint	160	143	151	137	123
Newspapers and publications	4	5	4	3	3
Smooth carboards	169	206	249	255	300
Chemicals	3,492	3,024	3,838	2,235	2,777
Methanol	879	486	406	158	212
Potassium nitrate	156	177	478	174	287
Perfumes, cosmetics and make up articles	55	58	56	53	61
Tires, tubes and sheaths	140	147	151	81	159
Basic metal industry	1,264	1,680	1,419	1,063	1,907
Copper wire	413	466	488	282	464
Metal products, machinery and equipments	1,079	1,363	1,656	1,420	1,555
Metal manufacturing	149	175	296	181	215
Transport materials	264	420	402	395	416
Other manufacturing	312	372	336	251	257
B. Duty free zone	1,297	1,569	1,821	1,451	1,675
II. Goods acquired in ports by carriers and other goods	421	446	592	409	394
III. Non-monetary gold	531	577	763	907	1,045
TOTAL (I+II+III)	58,680	67,972	66,259	54,004	71,028

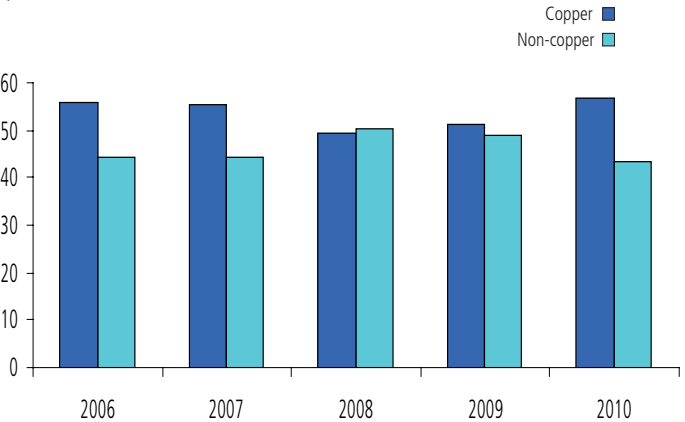
(1) Provisional figures.

Exports and imports of goods
(US\$ billion)



Source: Central Bank of Chile.

Incidence of copper in Chilean exports
(percent)



Source: Central Bank of Chile.

	2006	2007	2008	2009	2010
Goods imports ⁽¹⁾ (US\$ million cif) (D)					
I. General goods	37,556	46,202	60,427	41,677	57,573
A. General tariff regime	35,104	43,231	56,569	38,796	53,623
1. Consumer goods	7,914	9,740	11,611	8,745	13,356
Durable ⁽²⁾	3,167	3,653	4,247	2,918	5,438
Semidurable ⁽³⁾	1,927	2,233	2,620	2,188	3,022
Other	2,820	3,855	4,745	3,639	4,896
2. Intermediate goods	21,205	26,442	35,709	23,134	30,584
Fuels and lubricants	7,511	9,885	14,475	8,133	10,109
Crude oil	4,874	5,018	7,175	3,976	4,341
Non-oil	2,638	4,867	7,300	4,157	5,768
Other	13,694	16,558	21,234	15,001	20,476
3. Capital goods	5,985	7,048	9,249	6,917	9,683
B. Duty free zone	2,452	2,971	3,858	2,881	3,951
II. Goods acquired in ports by carriers and other goods	850	962	1,597	894	1,382
III. Non-monetary gold	0	0	0	0	0
IV. Total imports of goods (cif) (I+II+III)	38,406	47,164	62,024	42,571	58,956
Less: freight and insurance	2,506	3,133	4,294	2,683	3,782
Total imports of goods (fob)	35,900	44,031	57,730	39,888	55,174

(1) Provisional figures.

(2) Durable consumer goods are those that can be used for over a year and that have a relatively high value, as well as those that can be used for three years or more.

(3) Semidurable consumer goods are those that can be used for more than a year but less than three years and that do not have a relatively high value.

	2006	2007	2008	2009	2010
Trade balance by country and agreement (D) (1) (US\$ million fob)					
America	3,209	814	-5,536	-2,326	-4,374
North America	5,983	3,030	-1,837	-325	-1,673
United States	3,839	1,671	-2,739	-1,162	-2,218
Canada	850	319	446	500	719
Mexico	1,293	1,038	456	291	-175
South America	-3,582	-2,976	-4,687	-2,352	-2,820
Argentina	-3,378	-3,166	-3,648	-3,552	-3,346
Bolivia	957	1,160	1,415	1,067	1,033
Brazil	-1,160	-852	-1,065	39	-109
Colombia	127	-185	-1,209	-696	-711
Ecuador	-143	-257	-1,018	-474	-281
Paraguay	72	116	115	-50	-49
Peru	-272	-431	-224	642	222
Uruguay	-82	-10	-40	42	19
Venezuela	300	648	991	624	394
Other	-3	0	-4	6	7
Central America and the Caribbean	808	759	988	352	119
Europe	11,226	10,426	8,733	3,763	5,729
Germany	604	217	-179	-359	-1,017
Austria	-113	-122	-167	-100	-111
Belgium	572	569	511	669	1,389
Bulgary	431	456	499	408	230
Denmark	2	-20	17	-25	-5
Spain	749	495	855	122	381
Finland	40	-8	0	-101	-1
France	1,788	1,619	1,303	623	423
Greece	194	365	2	155	290
Italy	2,301	2,804	2,445	679	1,572
Ireland	-14	4	-19	-9	-16
Norway	-33	-54	-60	-1	21
Netherlands	3,715	3,760	3,800	1,849	2,285
Poland	176	163	145	94	2,6
Portugal	-41	-39	-50	-10	6
United Kingdom	402	367	241	-390	-297
Russian Federation	139	191	276	181	290
Sweden	81	36	-108	-159	-153
Switzerland	-7	10,0	13	162	287
Turkey	370	-357	-566	172	196
Other	-129	-31	-224	-197	-47
Asia	11,468	15,228	8,405	13,878	17,103
Middle East	315	372	156	131	79
Rest of Asia	11,153	14,856	8,249	13,747	17,024
China	1,115	4,678	1,533	6,697	8,236
South Korea	2,022	829	582	1,102	851
Philippines	101	325	235	119	208
India	1,442	2,092	1,011	872	1,374
Indonesia	45	60	34	-6	20
Japan	5,091	5,573	3,553	3,599	4,448
Malaysia	-63	-97	-33	-39	76
Pakistan	-59	-63	-64	-49	-66
Singapore	24	1	-17	49	-1
Taiwan	1,253	1,450	1,549	1,129	1,740
Thailand	140	-90	-215	-50	-236
Vietnam	56	52	12	-17	125
Other	-14	46	69	340	249
Africa	-1,774	-1,065	-1,447	-53	-495
Angola	-1,240	-920	-1,593	-31	4
Nigeria	-383	-216	31	50	18
South Africa	-7	31	59	0	-2
Other	-145	41	55	-73	-515
Oceania	-57	73	189	214	485
Australia	-50	76	205	221	494
New Zealand	-17	-13	-24	-13	-14
Other	9	9	8	6	5
Others not assigned to economic regions (2)	-1,291	-1,507	-1,815	-1,361	-2,595
Statistical discrepancy	0	-27	0	0	0
Total	22,780	23,941	8,529	14,117	15,855
Commercial agreements (3)					
Apec	14,271	14,200	4,160	12,454	13,299
Laia	-2,240	-1,879	-4,161	-2,035	-2,968
Mercosur	-4,548	-3,912	-4,638	-3,520	-3,485
Nafta	5,983	3,030	-1,837	-325	-1,673
European Union	10,425	10,638	9,131	3,256	4,917

(1) More detailed series at www.bcentral.cl.

(2) Includes goods repairs and goods acquired on ports by carriers. In the case of imports it also includes confidential expenses and postal imports.

(3) Commercial agreements include the following countries:

Apec: Australia, Brunei Darussalam, Canada, Chile, China, Hong Kong, Indonesia, Japan, South Korea, Malaysia, Mexico, New Zealand, Papua New Guinea, Peru, Philippines, Russian Federation, Singapore, Taiwan, Thailand, United States, and Vietnam.

Laia: Mexico, Cuba, Venezuela, Colombia, Ecuador, Peru, Bolivia, Brazil, Paraguay, Chile, Argentina, and Uruguay.

Mercosur: Argentina, Brazil, Paraguay and Uruguay. Chile participates only as an associated member.

Nafta: United States, Canada and Mexico.

European Union: Germany, Austria, Belgium, Cyprus, Denmark, Slovakia, Slovenia, Spain, Stonia, Finland, France, Greece, Hungary, Ireland, Italy, Latvia, Lithuania, Luxembourg, Malta, Netherlands, Poland, Portugal, Check Republic, United Kingdom and Sweden.

As of January 2007 Romania and Bulgary also became members.

	2006	2007	2008	2009	2010
FOREIGN DEBT					
Gross foreign debt by maturity (D) (1) (2) (US\$ million)					
I. Foreign debt (II + III)	49,497	55,733	63,732	72,991	86,738
1. Public sector	11,445	12,761	12,284	13,527	17,408
General government (3)	4,171	3,611	2,914	2,549	4,184
Monetary authorities	171	363	346	1,428	1,407
Banks	507	452	509	674	1,049
Rest	6,596	8,335	8,515	8,876	10,768
2. Private sector	38,052	42,972	51,448	59,464	69,330
Banks	7,128	9,956	12,631	15,497	18,101
Rest	30,924	33,016	38,817	43,967	51,228
Non-banking financial firms	13	16	20	20	38
Non-financial firms	30,774	32,920	38,722	43,850	51,087
Households and non-profit organizations	137	80	75	97	103
II. Long-term foreign debt	40,179	44,756	49,018	55,059	66,933
1. Public sector	10,092	10,342	9,448	11,321	15,850
General government (3)	4,171	3,611	2,913	2,549	4,184
Monetary authorities	154	347	331	1,421	1,403
Banks	199	418	251	30	897
Rest	5,568	5,966	5,953	7,321	9,356
2. Private sector	30,087	34,414	39,570	43,738	51,083
Banks	5,563	9,016	9,834	8,228	11,486
Rest	24,524	25,398	29,736	35,510	39,597
Non-banking financial firms	13	16	20	19	36
Non-financial firms	24,383	25,313	29,651	35,402	39,466
Households and non-profit organizations	128	69	65	89	95
III. Short-term foreign debt	9,318	10,977	14,714	17,932	19,805
1. Public sector	1,353	2,419	2,836	2,206	1,558
General government (3)	0	0	1	0	0
Monetary authorities	17	16	15	7	4
Banks	308	34	258	644	152
Rest	1,028	2,369	2,562	1,555	1,402
2. Private sector	7,965	8,558	11,878	15,726	18,246
Banks	1,565	940	2,797	7,269	6,615
Rest	6,400	7,618	9,081	8,457	11,631
Non-banking financial firms	0	0	0	1	2
Non-financial firms	6,391	7,607	9,071	8,448	11,621
Households and non-profit organizations	9	11	10	8	8
Gross foreign debt at market value (4)	49,796	55,940	63,544	73,674	87,273
Public sector	11,470	12,735	12,159	13,912	17,662
General government (3)	4,205	3,637	3,028	2,670	4,215
Monetary authorities	171	363	346	1,428	1,407
Banks	507	452	509	674	1,025
Rest	6,587	8,283	8,276	9,140	11,015
Private sector	38,326	43,205	51,385	59,762	69,611
Bancos	7,148	9,979	12,599	15,564	18,101
Rest	31,178	33,226	38,786	44,198	51,509
Accrued interest balance	1,043	1,069	1,168	1,196	1,426
Public sector	120	118	119	135	182
General government	58	62	55	54	82
Monetary authorities	0	0	0	0	0
Banks	0	2	7	1	7
Rest	62	54	57	80	93
Private sector	923	951	1,049	1,061	1,244
Banks	63	84	205	82	58
Rest	860	867	844	979	1,186

(1) Nominal value at original maturity.

(2) Including accrued interest, as from 2005.

(3) Includes private-sector debt with public guarantee.

(4) Includes market value bonds.

	2006	2007	2008	2009	2010
DIRECT FOREIGN INVESTMENT UNDER DECREE LAW 600 (R)					
Direct actual foreign investment by economic activity (1)	3,181,175	1,369,570	5,165,474	5,121,008	2,304,172
(US\$ thousand)					
Agriculture and livestock	3,107	734	940	1,500	2,000
Forestry	17,330	107,690	80,386	29,081	13,326
Fishing and aquaculture	0	11,483	10,998	0	0
Mining and quarrying	1,126,040	305,381	2,368,399	1,014,762	883,461
Food, beverages and tobacco	70,238	20,226	49,850	55,186	48,000
Wood and paper products	4,070	23,369	53,851	1,474	6,560
Chemicals, rubber and plastics	0	7,158	1,469	33,142	0
Other industries	21,164	18,705	113,199	367,950	83,713
Electricity, gas and water	1,205,461	169,140	1,409,913	337,648	105,622
Construction	8,923	1,543	2,121	0	7,308
Trade	19,055	262,638	2,702	2,680,824	557,812
Transport and storage	171,502	15,741	425,985	8,028	283,493
Communications	65,076	66,476	283,843	194,547	123,087
Financial services	124,341	248,933	207,571	317,374	99,353
Insurance	22,574	10,268	26,158	400	20,627
Services to firms	93,159	71,472	113,628	60,486	62,905
Sewage, sanitation and similar services	0	0	0	0	0
Other services	229,135	28,613	14,461	18,606	6,905
EMPLOYMENT AND WAGES					
Employment (A) (2)					
Total population (thousands) (3)	-	-	-	16,928.9	17,094.3
Population under 15	-	-	-	3,863.1	3,817.7
Population aged 15 and over	-	-	-	13,065.8	13,276.5
Workforce (thousands)					
Employed	-	-	-	6,642.2	7,130.6
Unemployed	-	-	-	806.2	632.1
Laid off	-	-	-	707.3	552.8
Seeking employment for the first time	-	-	-	98.8	79.3
Passive (thousands)	-	-	-	5,617.4	5,513.9
Unemployment rate (%)	-	-	-	10.8	8.2
Lay-off rate (%)	-	-	-	9.5	7.1
Employed population by economic activity (thousands)	-	-	-	6,642.2	7,130.6
Agriculture, livestock and forestry	-	-	-	642.9	711.4
Fishing	-	-	-	55.4	44.8
Mining and quarrying	-	-	-	159.1	202.8
Manufacturing	-	-	-	750.2	803.0
Electricity, gas and water	-	-	-	49.8	59.0
Construction	-	-	-	504.4	572.2
Trade and retail	-	-	-	1,345.4	1,508.3
Hotels and catering	-	-	-	248.9	241.6
Transport, storage and communications	-	-	-	500.2	523.0
Financial intermediaries	-	-	-	130.5	128.5
Realstate, enterprising and rent activities	-	-	-	456.0	444.8
Public administration and defense	-	-	-	386.8	389.3
Teaching	-	-	-	479.1	489.8
Health and social services	-	-	-	292.4	301.0
Personal, social and communal services and activities	-	-	-	200.2	228.9
Private housing with domestic service	-	-	-	438.9	480.2
Offshore organizations and bodies	-	-	-	2.0	2.0

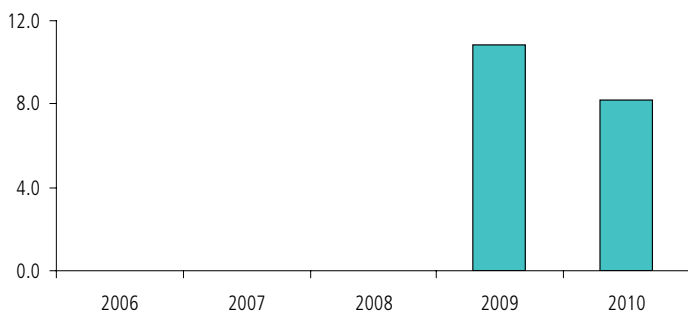
(1) Applications made each year according to Decree Law 600 of October 1974 and Decree Law 1748 of March 1977 and the amendments there to effected by laws 18,065, 18,474, 18,682, 18,840 and 18,904 published in the *Official Gazette* on 10 December 1981, 30 November 1985, 31 December 1987, 10 October 1989, and 25 January 1990, respectively.

(2) Figures of the calendar moving quarterly average of each year. As of April 2010 the National Statistics Bureau (INE), publishes a new survey: The New National Employment Survey, whose figures are available since 2009.

(3) Estimated at 30 June of each year, based on the 1992 census.

	2006	2007	2008	2009	2010
Employment in the Santiago					
Great (V)					
(thousands)					
Population aged 14 and over	4,582.8	4,650.0	4,718.8	4,785.2	4,849.1
Workforce					
Total	2,742.8	2,776.0	2,800.6	2,826.9	1,869.6
Employed	2,483.3	2,539.2	2,559.3	2,500.0	2,613.2
Unemployed	259.5	236.8	241.3	326.7	256.4
Laid off	225.6	203.8	215.1	288.9	225.7
Seeking employment for the first time	33.8	33.0	26.2	37.8	30.7
Lay-off rate (%)	8.2	7.3	7.7	10.2	7.9
Unemployment rate (%)	9.5	8.5	8.6	11.6	8.9
Unemployment rate nationwide and by region					
National	-	-	-	10.8	8.2
XV Region of Arica and Parinacota	-	-	-	8.2	7.1
I Region of Tarapacá	-	-	-	6.6	5.4
II Region of Antofagasta	-	-	-	8.7	7.6
III Region of Atacama	-	-	-	9.9	7.5
IV Region of Coquimbo	-	-	-	9.6	8.3
V Region of Valparaíso	-	-	-	13.1	9.7
VI Region of Libertador Gral. Bernardo O'Higgins	-	-	-	9.0	6.8
VII Region of Maule	-	-	-	10.5	7.1
VIII Region of Biobío	-	-	-	12.6	9.2
IX Region of La Araucanía	-	-	-	12.5	8.4
XIV Region of Los Ríos	-	-	-	10.2	9.0
X Region of Los Lagos	-	-	-	7.3	7.1
XI Region Aisén of General Carlos Ibáñez del Campo	-	-	-	4.7	5.2
XII Region of Magallanes y de La Antártica Chilena	-	-	-	7.1	5.2
RMS Stgo. Metropolitan Region	-	-	-	11.1	8.2

National unemployment rate (percent)



Source: National Statistics Bureau (INE).

	2006	2007	2008	2009	2010
Wages (A) (annual averages)					
Nominal index of wages (1) (2009 = 100)	-	-	-	100.00	103.62
Percentage change	-	-	-	-	3.6
Real index of wages (2) (2009 = 100)	-	-	-	100.00	102.17
Percentage change	-	-	-	-	2.2
Nominal index of labor cost (3) (2009 = 100)	-	-	-	100.00	104.41
Percentage change	-	-	-	-	4.4
Minimum wage (E) (4) (pesos of December of each year)	135,000	144,000	159,000	165,000	172,000
Remuneration and hourly average labor costs (5) (Nominal pesos)					
Regular hourly remuneration (6)	-	-	-	2,545.04	2,653.66
Percentage change	-	-	-	-	4.3
Total regular and extra hourly remuneration (7)	-	-	-	3,378.56	3,508.93
Percentage change	-	-	-	-	3.9
Total hourly labor cost(8)	-	-	-	3,660.90	3,825.86
Percentage change	-	-	-	-	4.5

(1) The concept of earning refers to the set of payments in money and in kind of monetary value that an employee should receive from his employer according to a work contract for his work and function. Expenses incurred to the employer, corresponding to reimbursement of expenses incurred to the employee due to the work itself and any sporadic payment that the employer might make, are excluded.

(2) Figures deflated by consumer price index (CPI).

(3) The labor cost results from the salaries paid plus the cost to the employer of refunding expenses incurred to the employee, costs of training and staff welfare services, less certain social security payments that the employer has to make (for example family allowances given by the State). Any indemnization paid to the employee for termination of contract and any sporadic payments are excluded.

(4) Corresponds to the minimum legal amount an employer must pay to any private-sector worker between 18 and 65 years old, not included in any special category of work. This amount is used to calculate the worker's minimum legal contribution to his pension fund.

(5) General referential figures.

(6) Regular remuneration includes only regular hourly payments, excluding any other occasional payment.

(7) Total hourly remuneration encompasses regular and extra hours.

(8) Labor cost includes remunerations plus employer costs due to refunding of workers' expenses. For instance: lunch, transportation, training, and welfare services, among others.

	2006	2007	2008	2009	2010
Average worker hours (Number of paid hours) (1)					
Regular hour (2) (Number of regular hours)	-	-	-	174,07	172,98
Percentage change	-	-	-	-	-0,6
Extra hours (3) (Number of extra hours)	-	-	-	7,88	7,77
Percentage change	-	-	-	-	-1,4
Total hour (4) (Number of total hours)	-	-	-	181,95	180,75
Percentage change	-	-	-	-	-0,7
SOCIAL INDICATORS					
Years of school attendance of economically active population (S) (5)	11.5	12.0	11.7	11.8	(n.a.)
Men	11.2	11.4	11.5	11.5	(n.a.)
Women	12.1	12.2	12.1	12.3	(n.a.)
Illiteracy rate (S) (6)	3.52	3.80	4.00	(n.a.)	(n.a.)
Number of births (A) (7)	233,104	242,054	248,366	253,574	(n.a.)
Number of deaths (A)	85,639	93,000	90,168	91,965	(n.a.)
Birth rate (per 1,000 people) (A)	14.2	14.6	14.8	15.0	(n.a.)
Mortality rate (per 1,000 people) (A)	5.2	5.6	5.4	5.4	(n.a.)
Infant mortality rate (per 1,000 people) (A) (8)	7.9	8.3	7.8	7.9	(n.a.)

(1) General referential figures.

(2) Regular hour is that included within any of the regular working days monthly paid to the worker pursuant to the work contract.

(3) Extra hour is that which exceeds the regular working day, according to the work contract, or which surpasses the 45-hour weekly legal maximum.

(4) Total hourly remuneration encompasses regular and extra hours.

(5) Average of effective years of school attendance by the employed workforce, which is 15 year of age and older. Each year's average has been calculated by the Publications Department of the Central Bank of Chile on the basis of the quarterly results published by INE's National Employment Surveys.

(6) Percentage of population 15 year of age and older unable to read and write a short sentence.

(7) Ratio between the number of effective registered schoolchildren at a given level and the corresponding age group of the national population.

(8) Number of deaths of less than one-year old infants, per 1,000 newborns.

(n.a.) Not available.

	2006	2007	2008	2009	2010
Population percentage share by type of health insurance (T) (1)	100.0	100.0	100.0	100.0	100.0
Public insurance (2)	69.5	70.4	72.7	73.5	74.1
Private insurance (3)	16.3	16.6	16.5	16.3	16.5
Other (4)	14.2	13.0	10.8	10.2	9.4
SELECTED WELFARE INDICATORS					
Number of cars per 1,000 people (A)	135	142	150	154	165
Telephone lines in service per 1,000 people (A)	203	197	201	207	206
Mobile phone users per 1,000 people (A)	726	812	882	938	1,084
Electric power consumption per capita (kWh) (O)	974	998	977	(n.a.)	(n.a.)
Liquefied gas consumption per capita (kg) (O)	50	53	50	(n.a.)	(n.a.)

(1) Percentage calculated by the source on the basis of the estimated population at December of each year.
(2) Includes all beneficiaries from the public health insurance administrated by the Fondo Nacional de Salud, Fonasa (national health fund) at December of each year.
(3) Includes all beneficiaries of the private health insurance administrated by the system of health insurance institutions (isapres) at December of each year.
(4) Includes individuals and members of the Armed Forces, not covered by the public or private health systems.
(n.a.) Not available.

SOURCES

- (A) Instituto Nacional de Estadísticas (INE) / National Statistics Bureau.
- (B) Dirección Meteorológica de Chile / National Meteorological Division.
- (C) Ministerio de Salud / Ministry of Health.
- (D) Banco Central de Chile / Central Bank of Chile.
- (E) Ministerio de Hacienda / Ministry of Finance.
- (F) Ministerio de Agricultura, Oficina de Estudios y Políticas Agrarias (Odepa) / Ministry of Agriculture, Office for Agricultural Research and Policies.
- (G) Ministerio de Agricultura, Corporación Nacional Forestal (Conaf) / Ministry of Agriculture, National Forestry Agency.
- (H) Instituto Forestal (Infor), filial Corfo / Forestry Institute, Corfo affiliate.
- (I) Ministerio de Economía, Fomento y Reconstrucción, Servicio Nacional de Pesca (Sernapesca) / Ministry of Economics, Development and Reconstruction, National Fishing Service.
- (J) Comisión Chilena del Cobre (Cochilco) / Chilean Copper Commission.
- (K) Servicio Nacional de Geología y Minería (Sernageomin) / National Geological and Mining Service.
- (L) Empresa Nacional del Petróleo (Enap) / National Petroleum Corporation.
- (M) Sociedad de Fomento Fabril (Sofopa) / Manufacturing Development Association.
- (N) Cámara Chilena de la Construcción (CChC) / Chilean Chamber of Builders.
- (O) Comisión Nacional de Energía (CNE) / Chilean Energy Commission.
- (P) Bloomberg.
- (Q) Superintendencia de Bancos e Instituciones Financieras (SBIF) / Superintendency of Banks and Financial Institutions.
- (R) Comité de Inversiones Extranjeras (CIE) / Foreign Investment Committee.
- (S) Ministerio de Educación Pública / Ministry of Public Education.
- (T) Fondo Nacional de Salud (Fonasa) / National Health Fund.
- (U) Servicio Agrícola y Ganadero (SAG) / Agricultural and Livestock Service.
- (V) Departamento de Economía, Universidad de Chile / Department of Economy, University of Chile.

PUBLICATION PREPARED AND EDITED
BY THE PUBLICATIONS DEPARTMENT
INSTITUTIONAL AFFAIRS MANAGEMENT
CENTRAL BANK OF CHILE

ISSN : 0716-2464

Edition : 850 copies

Printed in Chile
Editora e Imprenta Maval Ltda.
Agustinas 1180 - Santiago
Postal Office Box 967 - Santiago
Zip code 834-0454 Santiago
Telephone: 56-2-670 2000
Fax: 56-2-670 2231
www.bcentral.cl
bcch@bcentral.cl
November 2011



BANCO CENTRAL
DE CHILE

Statistical Synthesis of Chile 2006 - 2010